



1. Welcome

Eling to Holbury Cycle Route
&
Redbridge Causeway To Eling Cycle Route

Eling to Holbury Cycle Route Improvements

2. Wider Southampton Transforming Cities Fund Programme

The Waterside

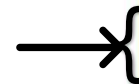
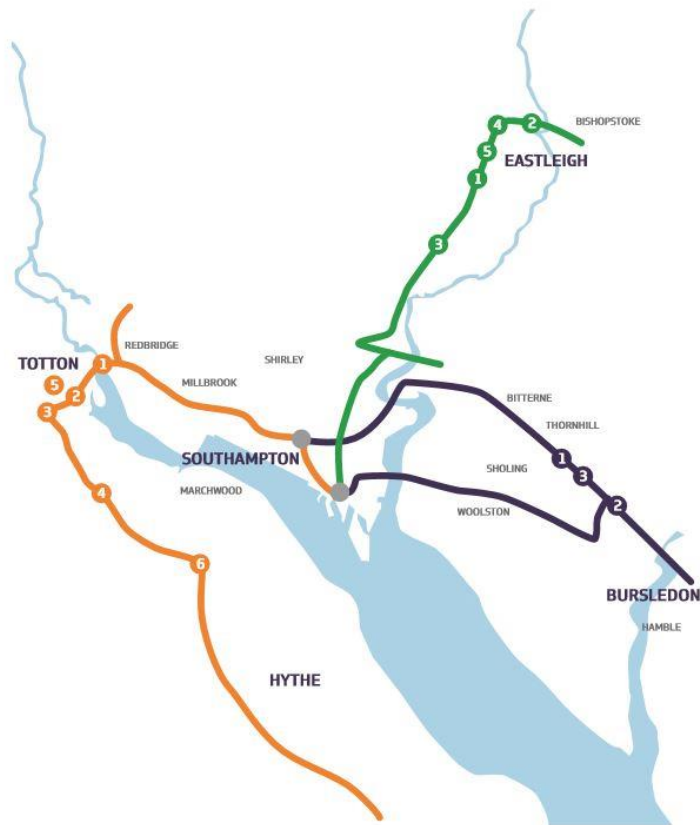
- 1 **Redbridge Viaduct** – increasing the height of the bridge parapets to the desired height, offering increased protection for cyclists.
- 2 **Eling to Holbury cycle route** – the development of a continuous cycle route from Eling to Holbury. The route is a mix of on and off road, segregated and shared, maximising the opportunities and funding available. The route aims to link to the existing settlements along the Waterside together, creating a legible and cohesive network of routes.
- 3 **Rushington Rbt** – bus priority. Adding traffic signals and additional capacity to the roundabout to speed up the bus at this congested location.
- 4 **Marchwood bypass** – bus priority. A bus only right turn from the A326 onto Marchwood bypass, joining with Rushington Roundabout to reduce journey length and therefore speed up journey times.
- 5 **Junction Rd, Totton** – bus only link in both directions to reduce journey length and speed up journey times. Location of a ‘super’ stop for bus passengers on Commercial Road.
- 6 **Improved bus stops with real time information**. Super and enhanced stops are proposed along the corridors to improve passengers’ experience, waiting facilities and information supplied. Potentially the opportunity for micro consolidation, e-bikes, retail lockers/offers.

Eastleigh

- 1 **Eastleigh Town Centre cycle route (from Southampton Parkway to Eastleigh Town Centre)**. Modal filters, signage and crossing facilities to provide a cycle route from Southampton Parkway to Eastleigh Town Centre.
- 2 **Bishopstoke Rd, Eastleigh (western end)** – bus priority. The provision of bus lane, signal priority from Riverside Junction to Chickenhall Lane Junction.
- 3 **Airport Parkway travel hub** – the provision of travel information and interchange at the Airport Parkway site to ensure integration between modes and improve journey efficiency and journey planning.
- 4 **Eastleigh Mobility Hub** – a Local Mobility Hub (LMH) will be a single place where a range of mobility options, services and facilities are available in a convenient location. They provide the opportunity for people who do not have access to their own car or only have access to one vehicle. They can also be used by those that want to make cleaner trips using an electric vehicle, bike or cargo bike for work, business or leisure.
- 5 **Improved bus stops with real time information**. Super and enhanced stops are proposed along the corridors to improve passengers’ experience, waiting facilities and information supplied. Potentially the opportunity for micro consolidation, e-bikes, retail lockers/offers.

Bursledon

- 1 **Bursledon Road cycle link** – improving existing provision for cyclists and enabling connectivity and joining up routes within the developing cycling network.
- 2 **A27 Providence Hill cycle link** – improving existing provision for cyclists and en and joining up routes within the developing cycling network.
- 3 **Improved bus stops with real time information**. Super and enhanced stops are proposed along the corridors to improve passengers’ experience, waiting facilities and information supplied. Potentially the opportunity for micro consolidation, e-bikes, retail lockers/offers.



Eling to Holbury Cycle Route Improvements

3. Scheme Details

Scheme Overview:-

This scheme proposes to enhance cycle connectivity between Southampton, Totton, Marchwood, Hythe and Holbury as well as connecting to the existing Southampton City Council's Cycle Network SCN Route 1 and the National Cycling Network. This scheme will utilise and join up existing cycle routes together with providing new routes by improving crossing facilities and providing signage.

Aims

- To encourage people to either walk or cycle as their first choice of local travel to access facilities and services in the Waterside area.
- To improve pavements and existing cycle routes to ensure they are clearly signed and marked.
- Support businesses and growth

Funding

This scheme is to be delivered by Hampshire County Council using funding provided by the Department for Transport's jointly with Southampton City Council to improve walking, cycling and public transport within the Southampton City Region.



**Funded by
UK Government**

Eling to Holbury Cycle Route Improvements

4. Scheme Overview Plan – Eling to Dibden



Image Source: Google, 2021

Eling to Holbury Cycle Route Improvements

5. Example Improvement - Marchwood Road/Bury Lane/Trotts Lane Toucan Crossing



Image Source: Google, 2021

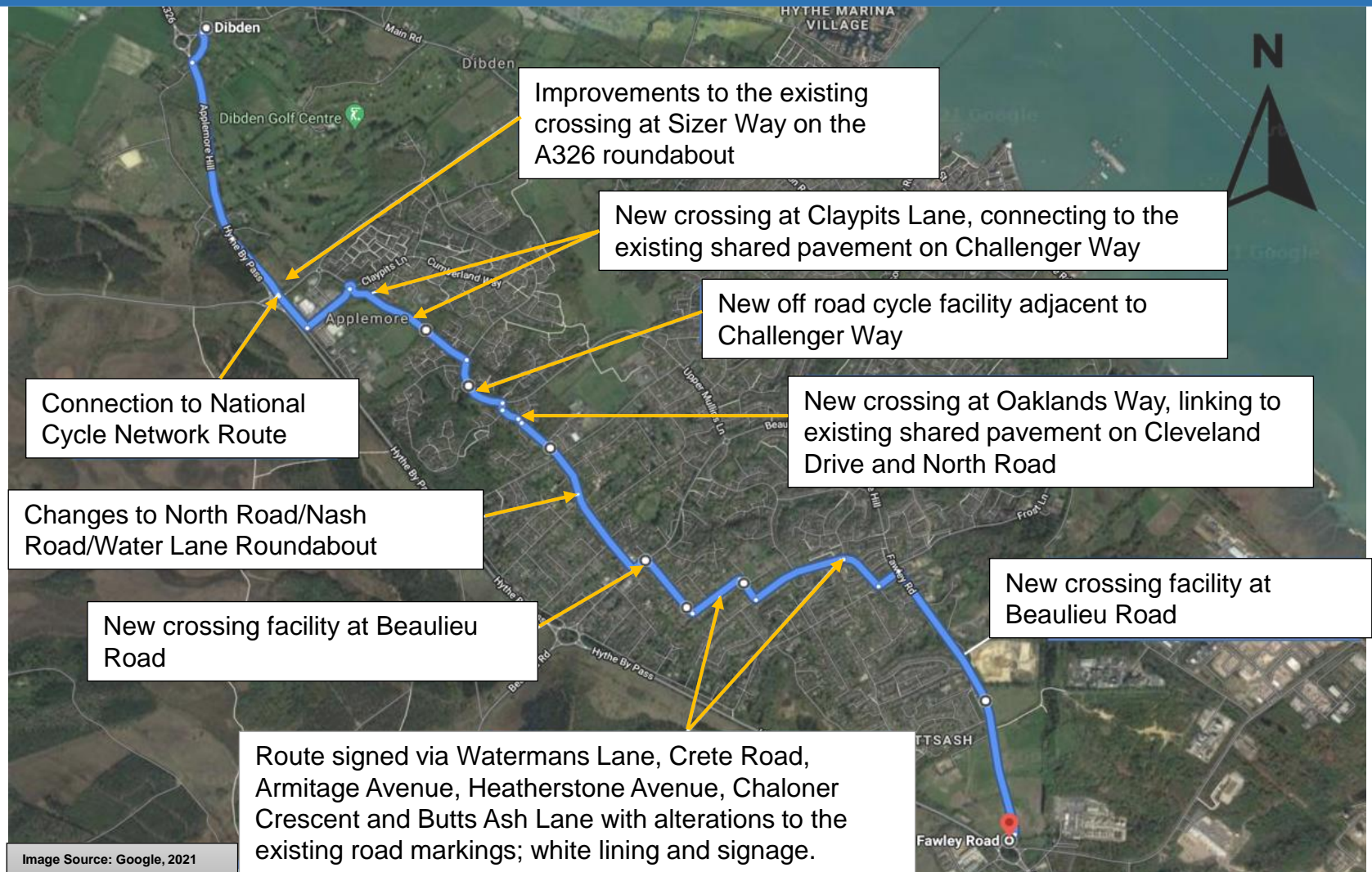
Eling to Holbury Cycle Route Improvements

6. Marchwood Road/Bury Lane/Trotts Lane Toucan Crossing Artists Impression



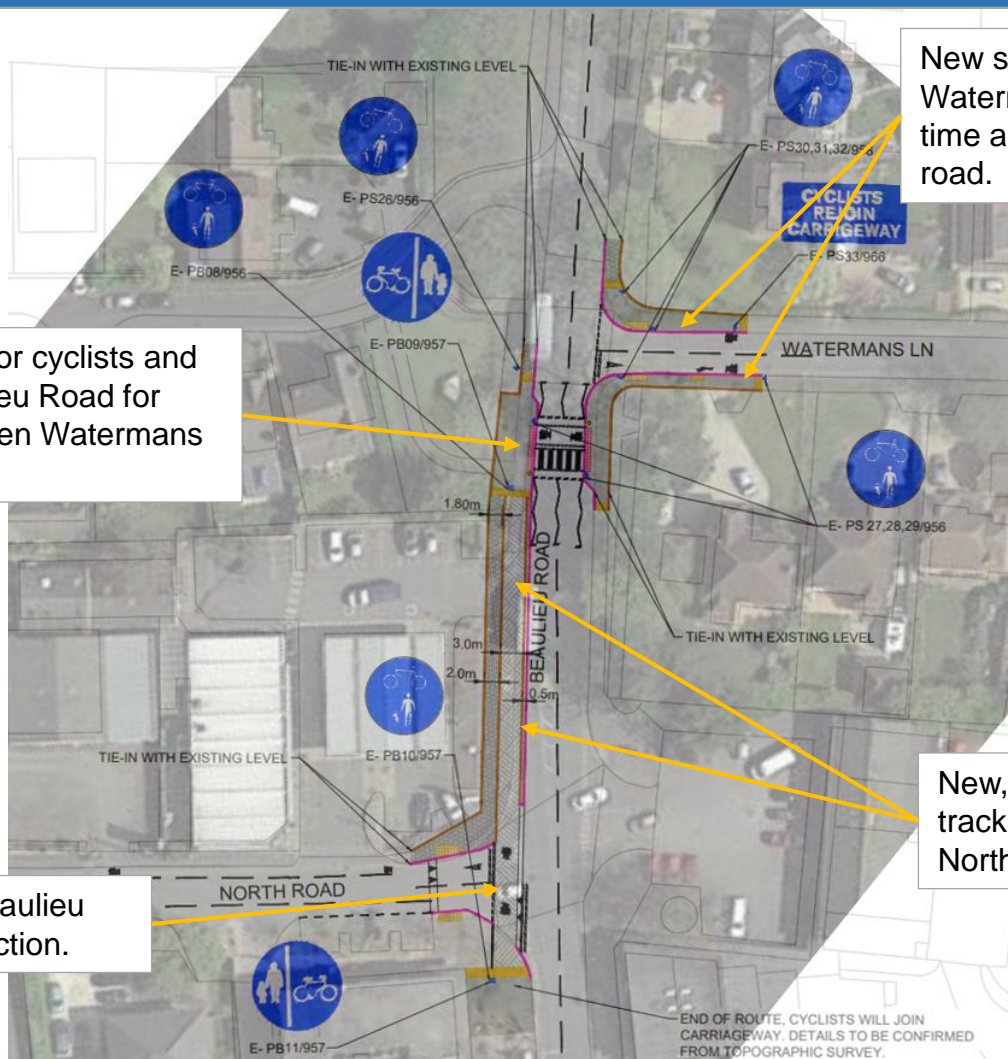
Eling to Holbury Cycle Route Improvements

7. Scheme Overview Plan – Dibden to Hardley



Eling to Holbury Cycle Route Improvements

9. Example Improvement – Beaulieu Road/Watermans Lane Off-road Cycle Provision



New shared use footway/cycleway on Watermans Lane to allow cyclists time and space to leave/re-join the road.

New crossing facility for cyclists and pedestrians on Beaulieu Road for those travelling between Watermans Lane and North Road.

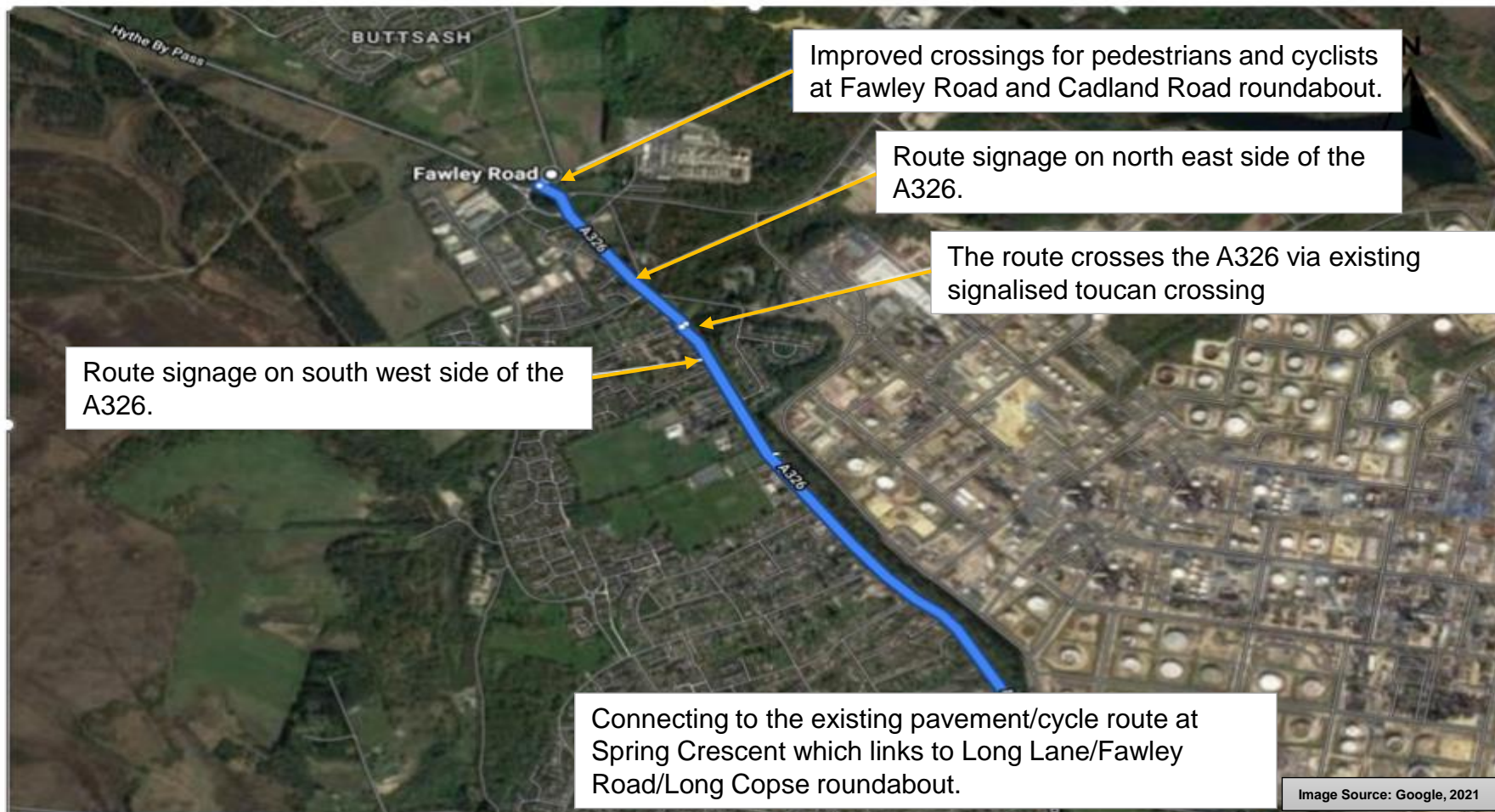
Priority for cyclists on Beaulieu Road at North Road Junction.

New, dedicated two-way cycle track on Beaulieu Road between North Road and Watermans Lane.

Image Source: Google, 2021

Eling to Holbury Cycle Route Improvements

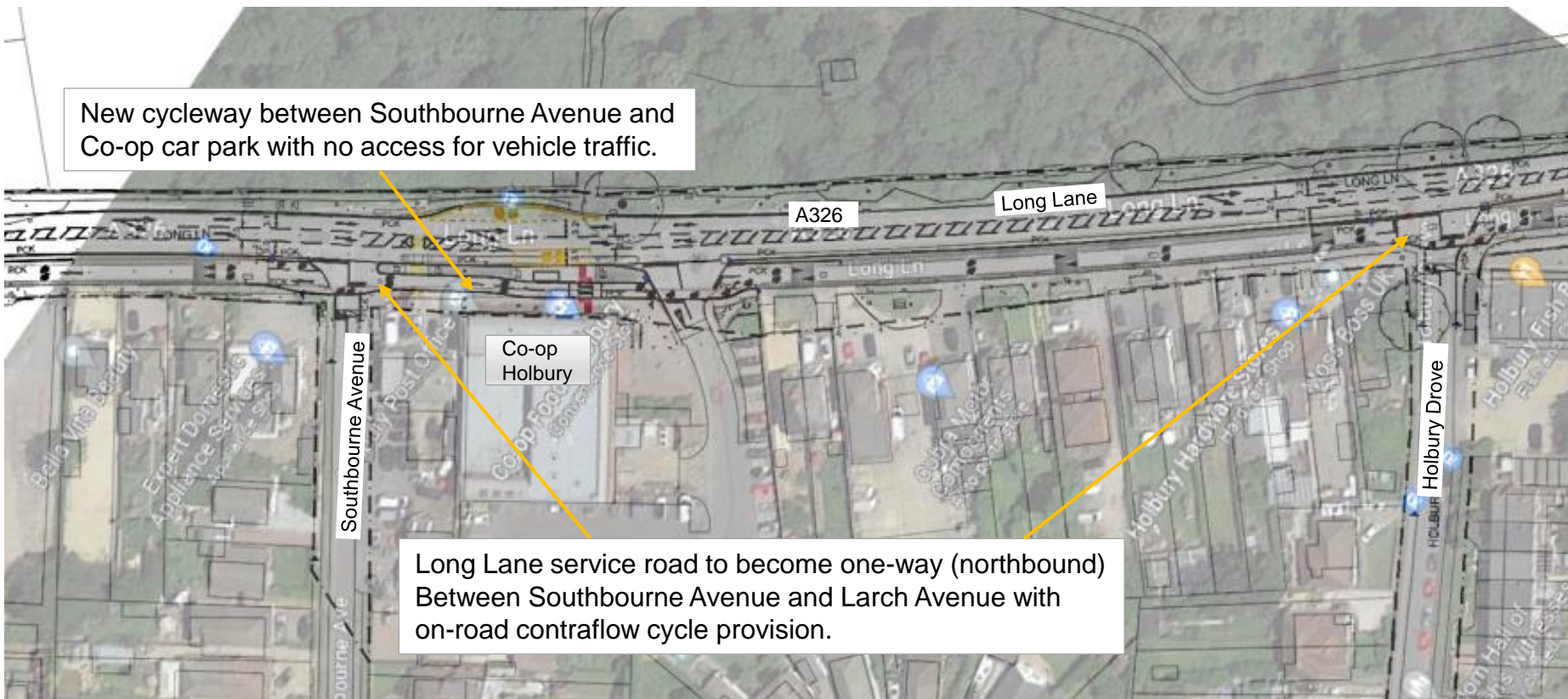
10. Scheme Overview Plan – Hardley to Holbury



Eling to Holbury Cycle Route Improvements

11. Example Improvement - Long Lane, Holbury Cycle Provision

New cycleway between Southbourne Avenue and Co-op car park with no access for vehicle traffic.



Long Lane service road to become one-way (northbound) Between Southbourne Avenue and Larch Avenue with on-road contraflow cycle provision.

Image Source: Google, 2021

Eling to Holbury Cycle Route Improvements

12. Example Improvement - Long Lane, Holbury Cycle Provision

Bus stop relocated from Long Lane service road to main road with and upgraded to an enhanced bus stop.

Long Lane

Sloane Avenue

Springfield Grove

Waltons Avenue

New cycleway between Waltons Avenue and Co-op car park on existing service road which would be closed to all apart from cyclists, pedestrians and emergency vehicles.

Image Source: Google, 2021

Redbridge Causeway to Eling Cycle Route Improvements

13. Scheme Details

Scheme Overview:-

This scheme comprises improvements to the existing shared use footway/cycleway between Redbridge Causeway and Rushington Roundabout, mostly on the southern side of the A35 Totton Bypass with a connection to Eling Lane.

This scheme will improve footways, footpaths, existing cycle routes to ensure they are clearly signed and marked with the aim to improve opportunities for cycling and walking, reducing car use and offering healthy travel alternatives.

Aims

- To encourage people to either walk or cycle as their first choice of local travel to access facilities and services in the Waterside area.
- To improve pavements and existing cycle routes to ensure they are clearly signed and marked.
- Support businesses and growth

Funding

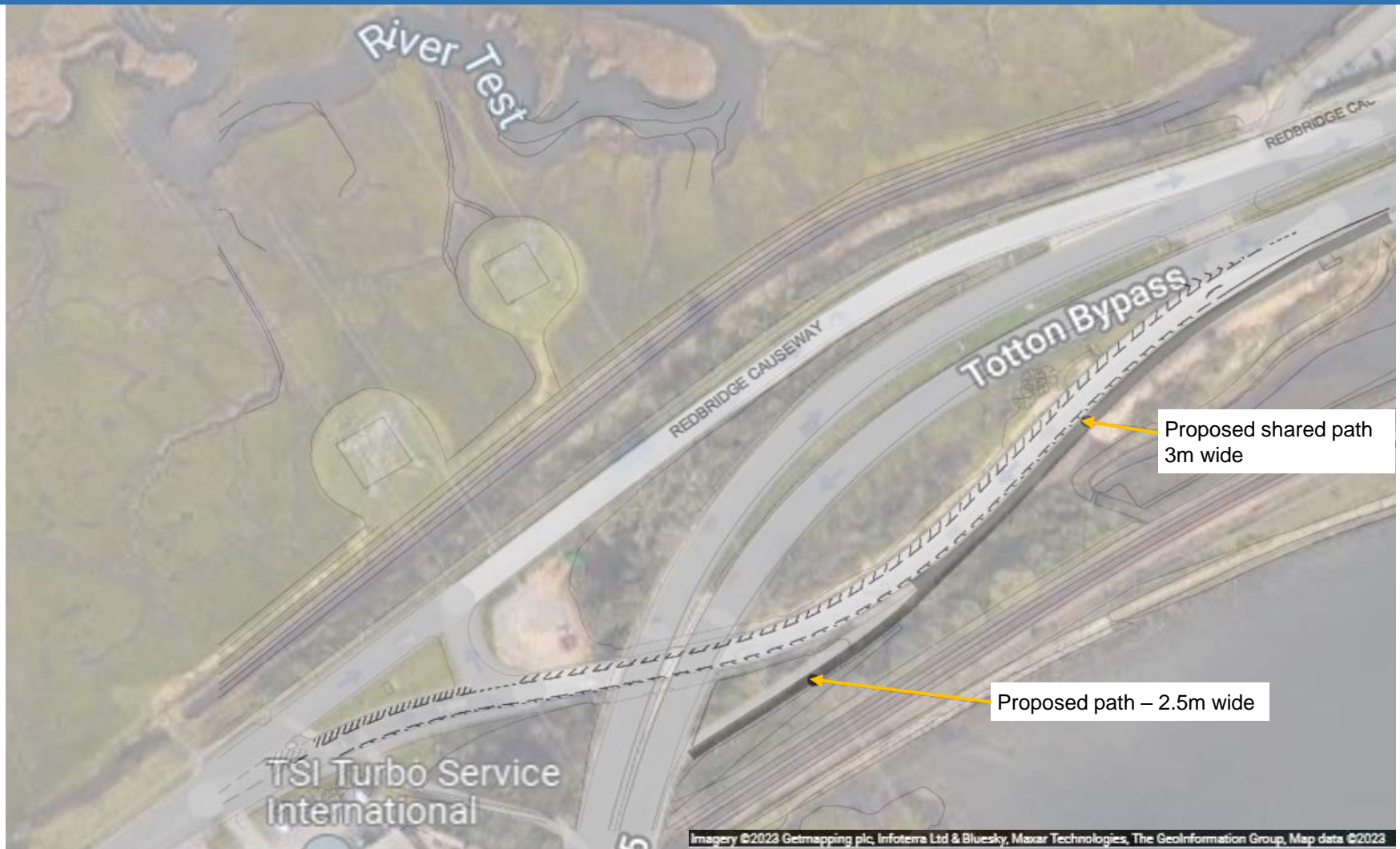
This scheme is to be delivered by Hampshire County Council using funding provided by the Department for Transport's jointly with Southampton City Council to improve walking, cycling and public transport within the Southampton City Region.



**Funded by
UK Government**

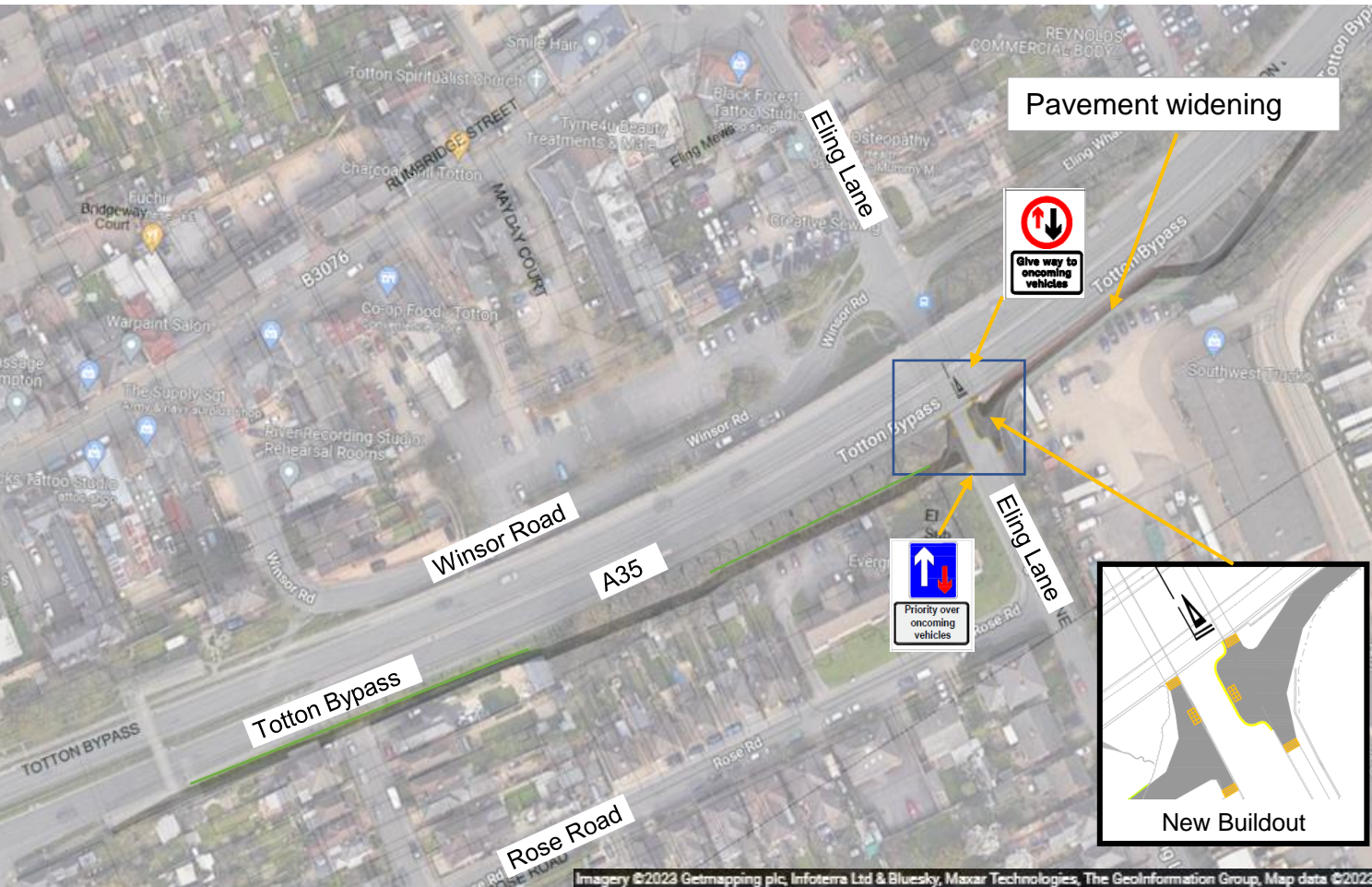
Redbridge Causeway to Eling Cycle Route Improvements

14. Totton Bypass



Redbridge Causeway to Eling Cycle Route Improvements

15. Totton Bypass/Eling Lane

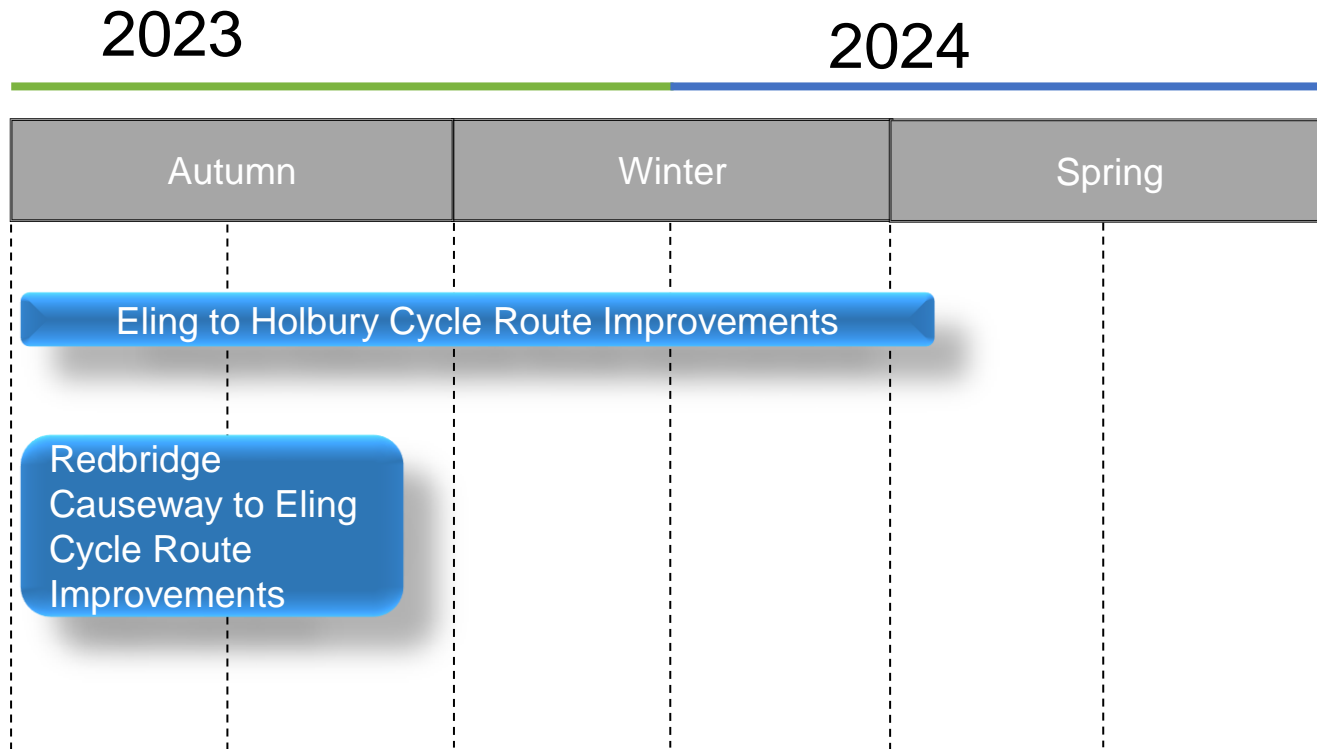


Key	
	Proposed paved area
	Proposed hazard paving
	Proposed tactile paving
	Proposed vegetation area
	New signage
	New signage

Imagery ©2023 Getmapping plc, Infoterra Ltd & Bluesky, Maxar Technologies, The GeoInformation Group, Map data ©2023

Waterside Transport Schemes

16. Construction Phasing Plan



Waterside Transport Schemes

17. Contact Us

Please visit the scheme web pages for up-to-date information;

Eling to Holbury Scheme;
<https://bit.ly/eling-to-holbury-cycle-route>



Redbridge to Eling Scheme:
<https://bit.ly/redbridge-causeway-to-eling>



Please contact us with any concerns or comments at;

Email: implementation@hants.gov.uk

Post: Capital Delivery,
Hampshire County Council,
The Castle,
Winchester SO23 8UD

Telephone: 0300 555 1388