



User Group

September 2023



Session overview

- ✓ Setting the context: Digital Foundations & Voice
- ✓ Quick intros
- ✓ Page layouts (esp. home page)
- ✓ Open session – your questions
- ✓ Next steps

Digital Foundations

There are many ways we can help small community organisations make sound choices about the digital tools and technology they use.



Communications made easy

Raise your profile using digital tools to engage supporters and fund your future

[Read more »](#)



Digital basics

Work and collaborate online using free and affordable digital tools and technology

[Read more »](#)



Websites for communities

Put your website at the heart of your charity or community organisation's story

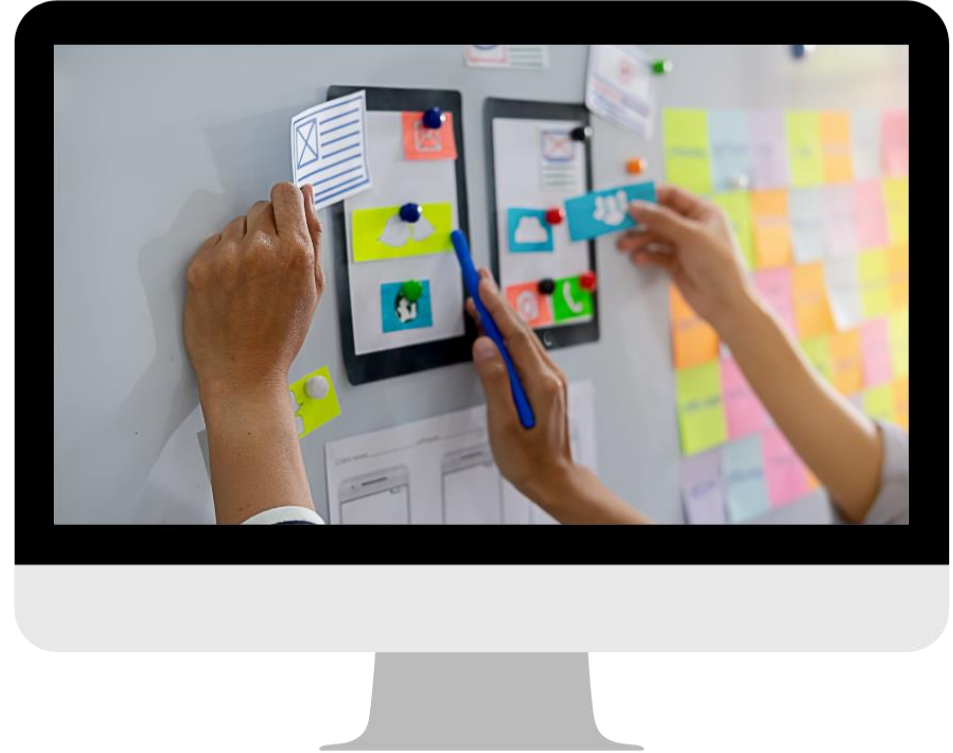
[Read more »](#)

Visit the [Digital Foundations](#) page to find out more.

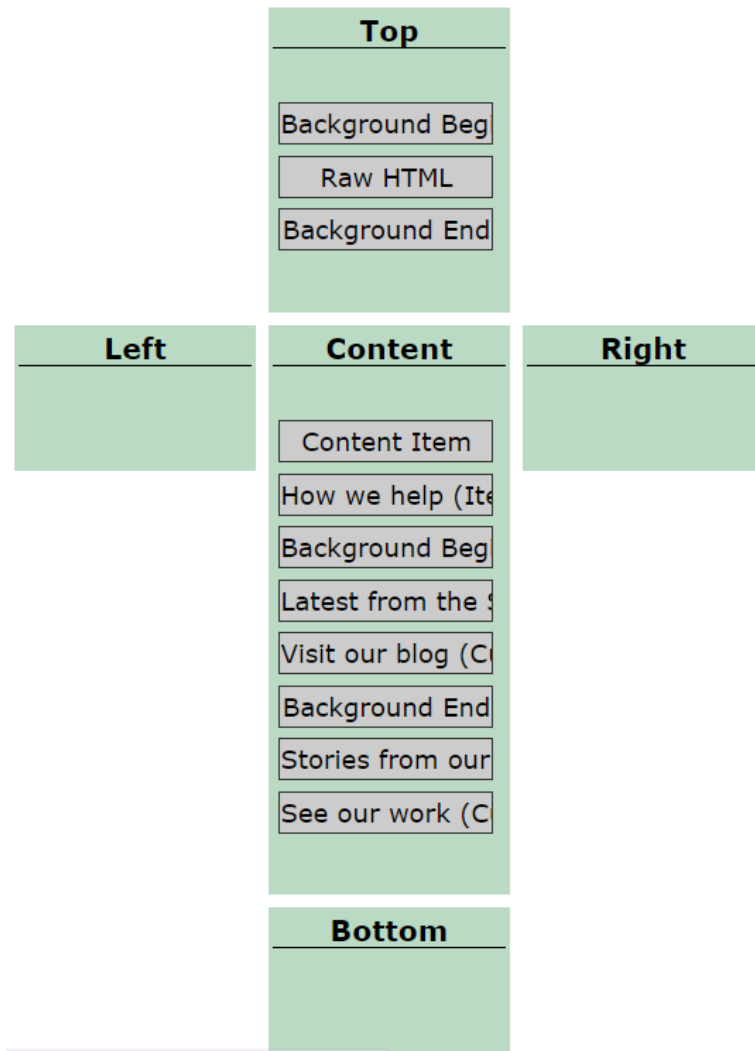
Home page ideas

Looking at your home page is there anything you'd consider changing?

- ✓ Quick conversation
- ✓ Meet another user group member
- ✓ 5 - 6 minutes



Superhighways



I think we could use a Custom includelet now instead of raw html for the writing over the top image.

The Background Begin is Natural as Source (so a 16x9 ratio, which is the original image shape).

How we help is an Item List includelet in a grid of 4. To do this we have kept our Page subtitles very short to display title and subtitle.

Latest from the is a Filtered Item List displaying pages that are children of the Latest section of the site. It displays the Short title (which means that there is no subtitle displaying). On pages themselves this is referred to as the Menu title.

The Background Begins on the remainder of the page are light grey colour rather than images.

HEAR Human Rights and Equalities Network

Home [Home page](#)

[Index](#)

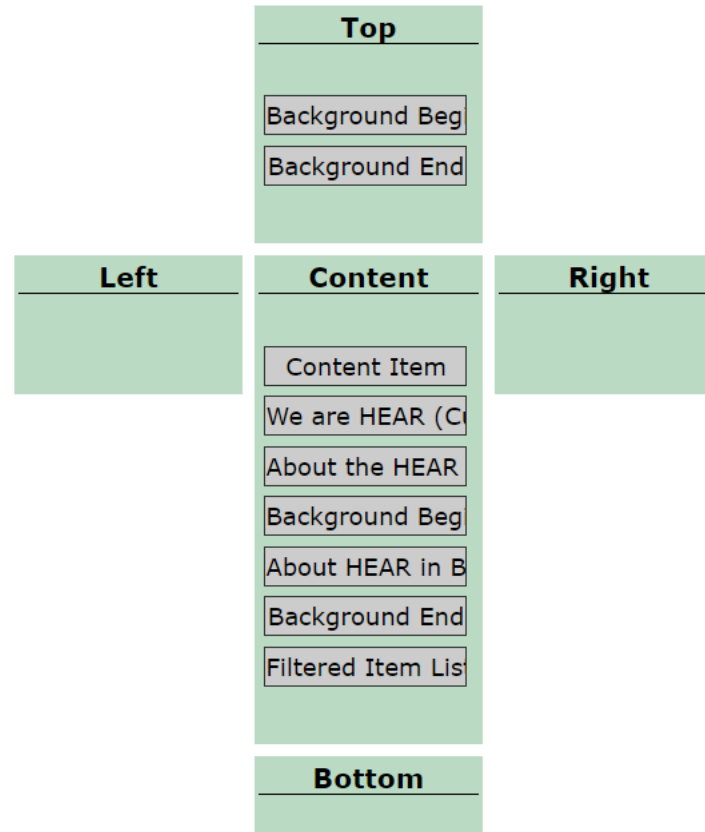
[Edit](#)

[Layout](#)

[Relations](#)

[Publishing](#)

**The latest revision of this item is published.
Create a new revision to make changes.**



Test websites

You can add this code to the end of your existing website URL to use a test site for practice or change colours and themes to see what it looks like.

:4430

Example:

<https://superhighways.org.uk:4430/>

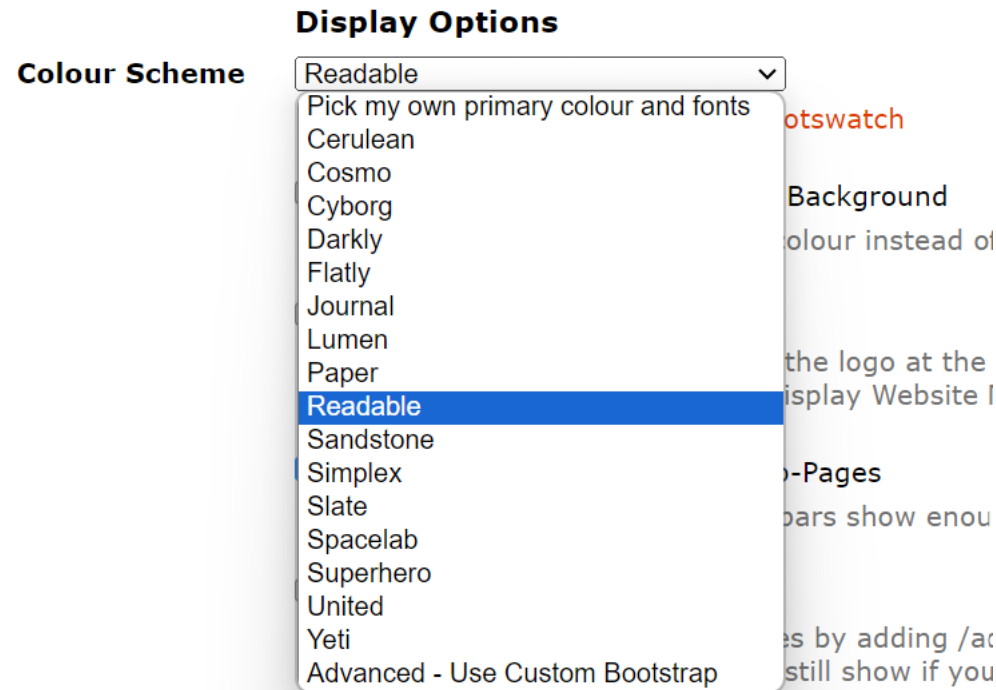
You can do the same with your e-voice URL e.g. e-voice.org.uk:4430/superhighways

Your test site website is only accessible by administrators using their existing log in details. Do not spend time perfecting your work on the test site as it cannot be directly transferred to your new website.



Changing your theme colour

Theme Options



In all themes you can pick a basic colour scheme (there are 16 of them) or Pick my own primary colour and fonts. You'll find this under Look and Feel

- Canva [colour palette generator](#) or [colour wheel](#) to find brand colours or codes
- [Adobe Colour Wheel](#) also creates a palette so that you can find your #hexcodes



Changing your theme colour

Theme Options

Display Options

Colour Scheme

Cosmo

i As defined and demonstrated on [Bootswatch](#)

Use older Colour Scheme version which has smaller fonts and less contrast

i The new version is more readable and has improved contrast. Use the old version only if the new one causes a problem with your site layout.

Admin Navbar Position

Top

i This includes the log in button and search box, (unless you enable the search link in navigation menu).

If you select 'None' then the admin menu will still show at the bottom if logged in. To get to site admin just go to the /admin/ URL directly for your site.

Navigation Menu Style

Navbar

In Bootstrap themes, Joe has made some changes to the themes so that they have better spacing and contrasts. However, if this has changed your site and you wish to keep the existing look and feel you can tick the box 'Use older Colour Scheme version'



Next steps

- ✓ You said we did
- ✓ Please let us know topics of interest
- ✓ Moving to an open format? Bi-monthly?

Next meeting

- ✓ Wednesday 11th October, 1.30pm–2.30pm