

November 2021

Edition 184



USEFUL NUMBERS

Braintree District Council	01376 552525
Colchester Hospital	01206 744491
Doctors Car Service	07845 596092
Freshwell Health Centre	01371 810328
Hedingham Medical Centre:	
Castle Hedingham	01787 461465
Sible Hedingham	01787 460612
Kaaren Berry, Parish Clerk	07341264219
Little Chestnuts Preschool	079018 80914
Little Hedgehogs Toddlers	01440 785778
Pumphouse Brewery	07780 702293
Rev. Liz Paxton	01787 277270
St Margaret's School	01787 237354
The Green Man Public House	01787 237418
Toppesfield Community Shop	01787 236003
Toppesfield Village Hall Booking	
Secretary—Daphne Jude	01440 788270

TOPPESFIELD COMMUNITY SHOP

Church Lane, Toppesfield. Tel: 01787 236003

Fresh Fruit & Vegetables, Milk, Newspapers, Confectionery, Pet Food, Dairy Products, Meat & Poultry, Coal and Kindling, Cards, Stationery and lots more!

Monday—Friday

8.30 am— 4.00 pm

Saturday—10.00 am—12.30pm

TOPPESFIELD POST OFFICE

Church Lane, Toppesfield

Wednesday— 10.00 am—1pm

Services include: Special Delivery, Mobile Top Up, Insurance Services, Household payments, Travel Money, Moneygrams, Savings Accounts plus more!

Toppesfield Parish Council

Councillors — Alan Collard, Amanda Smith, Andrea Chinery, Boyd Page, Gemma Mackman and Chris Neale. There is currently a vacancy for a 7th Parish Councillor, if you are interested in joining the parish council please inform one of the councillors or the parish clerk.

Parish Clerk — Kaaren Berry

Parish Council Meetings are normally held on the first Thursday of every month in the village hall. You are welcome to attend the Open Session which starts at 7.30pm.

Toppesfield & Gainsford End Parish Newsletter

Published by Toppesfield Parish Council

Editor: clerk.toppesfieldparishcouncil@gmail.com

Please see our online resources to find out what is happening

Facebook Pages :-

Toppesfield & Gainsford End Community

Toppesfield Village Hall

Toppesfield Village Stores

The Green Man, Toppesfield

Pumphouse Community Brewery

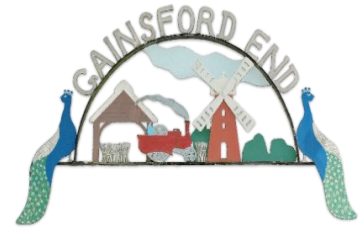
Toppesfield and Gainsford End Neighbourhood and Development Plan

Twitter & Instagram— Toppesfield & Gainsford End Community

Website—<https://e-voice.org.uk/toppesfield-parish-council/>



From the Parish Council



Welcome to our last Newsletter for 2021.

The days may be getting shorter, darker and colder but there are a lot of events planned in the village over the next couple of months in the lead up to Christmas and the New Year.

A calendar of events is further on in this Newsletter.

We are really pleased that it will be possible this year to celebrate the beginning of the Christmas period with a day of activities on Saturday 4th December. A Christmas market will be held at the village hall from 11am until 3 pm, a display of decorated Christmas trees and art and craft activities will take place in the church from 4 pm. At 6 pm we will start the countdown to turning on the lights of the village Christmas tree at the pump and enjoy mulled wine and sausage rolls. Finally there will be carol singing around the tree.

Make sure you are there!

In addition, over the next two months amongst other things, there will be the notorious Church Supper Auction, a Cake, Coffee and Catch up morning at the village hall, which is open to all, Quiz and music nights at the Green Man and in the Village Hall and the Carol service at the church.

After 18 months of lockdowns and restrictions, it is so good to see an increasing number of events taking place as we begin to socialise more.

In a more sombre vein, Remembrance Sunday this year is on 14th November and the service starts at 10:45. This is such an important event and one when we remember all those, especially from our village, who fought and lost their lives fighting for their families, their communities, their country and indeed, for all of those who have followed them.

On the parish council front, we have recently been actively involved in gauging views about the mega-prison proposed by the Ministry of Justice for Wethersfield airbase and liaising with other local parishes to develop a coordinated and stronger response to the plans. We saw a good turnout at the village hall recently and it was clear that the views are overwhelmingly opposed to the proposals. It is important now that we all make our views known to the MoJ. There is more about this elsewhere in the Newsletter.

At the playing field in Toppesfield, the trees have been inspected by a tree surgeon. On his advice, we have arranged the lifting of the foliage and canopy and removal of some dangerous branches from the lime trees on the churchyard side, the white poplars opposite and in the bottom corner. We are grateful to Braintree District Council who have agreed to part fund the work.

The new play equipment comprising Jungle Bars and Chin-up Bars is being installed on Thursday 25th and Friday 26th Nov. The play area will be closed and cordoned off for those days for safety reasons to give the contractors a clear area to work in.

We were delighted to see two of the younger members of the parish, Ellie-Ann and Isabella, working so hard with cake stalls to help raise money for new play equipment. Their efforts have been amazing - and the cakes delicious! Well done you two (and, to the mums who, we suspect, helped a little bit with some of the baking!).

Finally, following Daisy Watson's resignation from the parish council we have a vacancy. If you are interested in finding out what's involved please get in touch with Kaaren, our parish clerk.



Toppesfield Parish Council



Proposed Wethersfield mega-Prison

As everyone should know by now, there is a proposal to construct a prison complex at Wethersfield airbase, which would house over 3,400 prisoners and employ over 1,400 workers.

Whatever we feel personally of these proposals, there is no doubt it would have a major impact on our and many neighbouring villages. The strain on the built infrastructure – roads, buildings, bridges (and especially listed and heritage site) – would be huge, both during and after the lengthy construction period. There would be an impact on the natural environment and on the scenic landscape which we currently enjoy. And the employment opportunities for the local population are likely to be limited; we are, in any event, not an area of high employment.

It's also important to recognize that the choice here is not about whether a prison is preferable to a housing estate. The proposed prison would occupy no more than 20% of the total area of the base; that still leaves a lot of land for other uses after the Ministry of Defence moves out in 2025.

For large scale housing perhaps?

We all have an opportunity to make our voices heard regarding this proposal. The consultation period ends on 8th November and the details of how to make your views felt were included in the leaflet which was distributed last week.

We would urge every individual, if they have not already done so, to respond by 8th November following the online link - [Proposed new prisons in Wethersfield - Public Consultation - Ministry of Justice - Citizen Space](#)

The parish council is mindful of the overwhelming views of those at the public meeting on 28th October and will be working with a number of neighbouring parishes to ensure that those views are fully represented in discussions. If you access Facebook, there is a lively group which you can join - Wethersfield prison proposal Community forum.

What we can also be sure of is that we will be hearing a lot more on this subject over the coming months.

On the right is an aerial photo showing the large size of the new HMP Five Wells in Northamptonshire: by way of comparison, this is designed for 1,680 inmates – less than half the size proposed for Wethersfield.



An amazing and varied display of artwork

On 16th October, Toppesfield resident Julius Stafford-Baker presented an exhibition of artwork by his father, also named Julius Stafford-Baker, in the village hall.

If you did not visit the exhibition, you missed a real and very rare treat.

Julius senior was a self-taught and very versatile artist who worked across a range of styles and media. Although self-taught, he exhibited at the Royal Academy every year (except the war years) between 1933 and 1958, frequently winning awards.

From a 16 year old in 1920, creating line drawings of the livestock at Romford market, through landscapes of a bucolic pre-war Britain, war paintings from the 1940s (when he was a Royal Air Force official war artist) and work in post-war Japan, the exhibition covered a wide range of subjects, including a powerful work showing the view over the shattered remains of Hiroshima after the destruction caused by the first atomic bomb in 1945.

Proceeds from donations for the tea and delicious cakes produced by Jacquie and Claire totalled £172, which was presented to the Yeldham branch of the Royal British Legion.

Well done Julius and Jacquie well supported by Julius John, Rob & Claire, Fiona and Jack & Erin. Thanks for sharing the work with all of us.



A small selection of the dozens of pieces on show at the exhibition



St Margaret's of Antioch



Well, the start of my curacy has been busy, but I am very much enjoying being in the village and getting to know some of you better.

I meet some of you at the Crinders day, and what a great community event it was, and so lovely to meet and talk with the families there.

Our Harvest Festival service was a lovely event and very well attended and we were able to collect an amazing amount of donations for the food bank and Abi's foot prints. Abi's foot prints were overwhelmed and so touched by all the baby supplies we were able to donate and these will be an enormous help to those in need in and around Sudbury. So a big thank you to all involved. Over 25 of us enjoyed a scrumptious 2 course home cooked meal at The Green Man afterwards, and some of us enjoyed 2 helpings.

Please look in the magazine for details of our Remembrance service on the 14th November; you are all very welcome to attend.

Also, I am very excited and looking forward to the Supper Auction on November 12th, which I understand will be the highlight of my social calendar.!

On Saturday 4th December we will be having the village Christmas event and switching on the lights, with carol singing included. The Church will be open to view the decorated Christmas trees between 4pm and 6pm, and I will be providing some Christmas crafts for the children to do, so I hope some of the families in the village will come along and participate in those.

And as always if you know anyone in need of a visit, or you would like a visit yourself. Please get in touch.

revcarolinebrown@gmail.com: 01787 469161



And for those who have not met me yet, above is a picture of Rev Liz and myself after my ordination.

**Remembrance Service
St Margaret of Antioch
Sunday 14th November**



Service Commences at 10.45 am.

All welcome

“We will remember them”

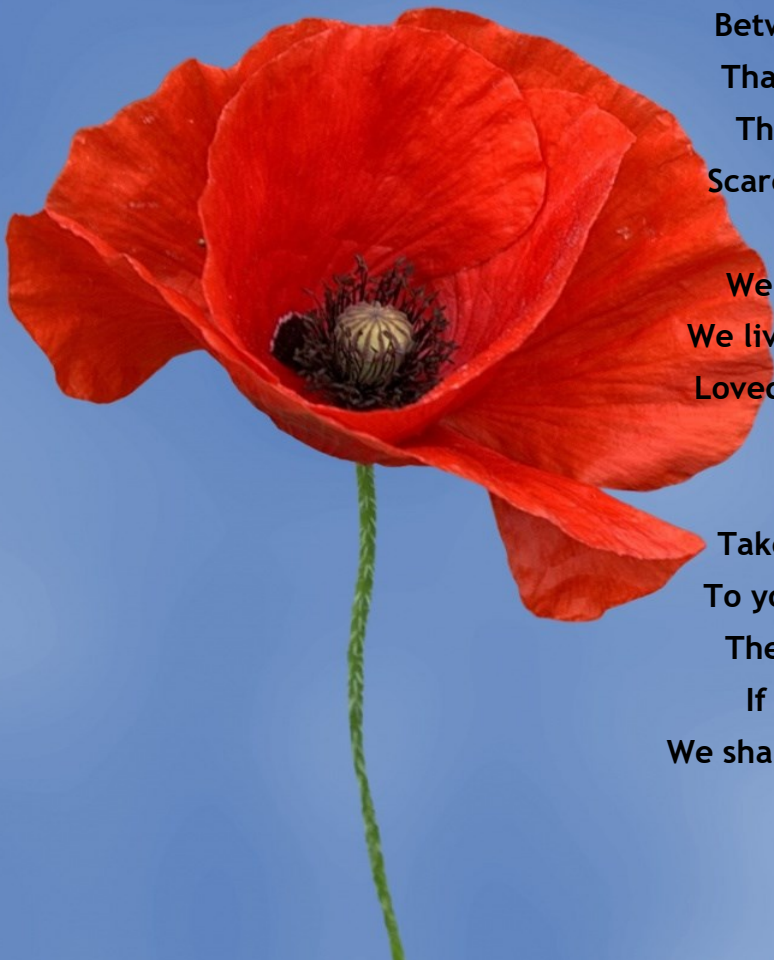
In Flanders Fields

In Flanders fields the poppies blow
Between the crosses, row on row,
That mark our place; and in the sky
The larks, still bravely singing, fly
Scarce heard amid the guns below.

We are the Dead. Short days ago
We lived, felt dawn, saw sunset glow,
Loved and were loved, and now we lie,
In Flanders fields.

Take up our quarrel with the foe:
To you from failing hands we throw
The torch; be yours to hold it high.
If ye break faith with us who die
We shall not sleep, though poppies grow
In Flanders fields.

JOHN MCCRAE





Services in November and December

November 7th Morning Prayer with Rev Caroline 11.00am

November 14th REMEMBRANCE SUNDAY SERVICE 10.45am

November 21st Morning Prayer 11.00am

November 28th Holy Communion 11.00am

December 5th Morning Prayer with Rev Caroline 11.00am

December 12th Holy Communion 11.00am

CHRISTMAS SERVICES



December 19th CAROL SERVICE 3.00pm

December 24th CHRISTMAS EVE HOLY
COMMUNION 6.30pm



December 25th CHRISTMAS DAY FAMILY SERVICE 11.00am

Toppesfield Parish Paths



Hi Everyone

The newsletter seems to come around so quickly but so good to report that now Covid restrictions have been lifted. I imagine and hope you are all still being careful and having your booster jab and the flu jab to keep yourselves safe.

The footpaths are still a great delight but can be quite tricky in places at this time of the year as the arable fields will have been harvested and ploughed or cultivated and in many cases already reseeded with next year's crop. This means that cross field paths are very muddy and difficult to navigate. The cross field paths are the responsibility of the land owner and I am sure as soon as the next crop is up the landowners will mark out the paths again.

In the July issue of the newsletter I reported that the bridge over the brook at the back of Ollivers had been repaired and made good. Unfortunately the heavy rains we have had recently have dislodged it again so it is in a precarious position. I have reported it but suspect it will be a while before it is repaired so if you are going that way do take care.

The mild and wet Autumn so far has meant that the trees are keeping their colour and their leaves, however there are plenty of signs of the approaching season.

The sunflowers by the bottle banks have been a constant source of pleasure all Summer, making a fantastic splash of colour. They are going over now but will still be good news for the birds!



The Russian vine always makes an early start on Autumn and is now glowing red as it scrambles all over anything it can reach. While walking through the churchyard I was delighted to see huge patches of the fungus called Lawyer's Wig. If you take a look you can see why it has been given this name. It is a member of the ink cap family and is also called the shaggy ink cap. It is good to eat while white and firm but as it matures the edges roll up and form ink. It would seem that this was used as ink many years ago.



There is always something of interest to see and hear. We are so blessed having such amazing wild life on our doorstep. When ever I walk locally I always hear and see buzzards, sometimes red kites soaring overhead and a possibly a muntjac deer creeping by. To my great delight I had a hedgehog in my garden this year. Haven't seen one for many years.

Keep safe, keep walking and be nature detectives!

Ann Read

Supper Auction Friday November 12th

Only a few days to go before the Supper Auction.

Now's the time to sort out the treasures you'd like to donate to the auction.

We sell anything (provided it's moveable and not very bulky).

The Village Hall will be open on the day from 2pm – 4pm and again from 6pm for you to deliver your goodies.

Any enquiries or a late request for tickets please call 01787 237974.



Toppesfield playing field improvements

During the week of COP 26 we have heard a great deal about the increasingly urgent need to do everything possible to combat climate change- and to do it right now!

As often happens, our village is right up there at the front; this time with 300 tree or hedging plants which will be arriving during November, as part of the improvements to the Playing Field.

We know that planting trees and bushes helps to capture carbon but not many people have room for 300, so this is a perfect opportunity to make a difference.

The plan is to create a wildlife corridor linking the school pond with the pond/ ditch at the bottom of the playing field. This can then continue along existing hedges and ditches.

Linking water sources by providing cover such as this is crucially important for amphibians, birds and small animals. It also allows predators such as owls to cover greater distances in search of mates, leading to a greater biodiversity.

There will be a mixed wildlife hedge across the bottom of the field, some small trees in the corner and shade tolerant bushes between the silver poplars (now much safer and lighter!)

Braintree Council's Landscape Department are helping with advice and some funding, together with our own Parish Council and some personal donations.

All that we need to do is to prepare the ground, do the planting and ensure that the trees flourish!

Anyone can help, so please do: let me know on 01787 237841 or email lynncollard@yahoo.co.uk





Phone to book (it makes it easier!)
01787 237418

Follow us at @greenmantoppes

Enquiries;
info@thegreenmantoppesfield.com

David and Paul are very happy to celebrate the final two months of the year having returned to full service. Seeing the community return freely, to come and go as normal, celebrate, sing, dance, play and sample from our renewed menus.

New weekly schedule!

Wednesday	Pizza night	5 – 8 pm
Thursday	Lunch club 12 – 2 pm	A la carte 5 – 8 pm
Friday	Coffee and cake 2 – 5 pm	Chip shop 5 – 8 pm
Saturday	Breakfast 10 am – 12 pm	A la carte 5 – 8 pm
Sunday	Roast	12 – 4 pm
Wed - Sat	A la carte	5 – 8 pm

Super value Thursday lunch club,
up to 3-courses just £12

Please ask us in advance if there is
anything you want but can't see

Smaller dishes prepared
for children

Function hire – Special events and family gatherings have been brought together within our restaurant or garden gazebo; we were finally able to honour deferred bookings. The restaurant room (or any space) is available to hire, buffet or seated. We'd be delighted to discuss your catering requirements.

Design a menu – What would be your dream menu? Missed out travelling to your favourite restaurant, or authentic international cuisine? Missed a special anniversary during lockdown? We can help design ANY menu your heart desires. Perhaps for a group of friends or for someone special. David's experience and catering capabilities are not to be underestimated, talk to us about your vision.



Dates for your diary – free entry

- **Live Music** Retro duo 8pm on Sunday 7th November – back by popular demand
- **Christmas menu** coming soon must be pre-booked. Christmas day bar only 12 – 3 pm
- **New Year's Eve** celebrations

Quiz nights – Teams of up to 6 people, register early and secure free chips and dips. It's just a bit of fun.....but there can only be one winner! Every 2nd Saturday monthly, 13th Nov, 11th Dec and 8th Jan.

Pool nights – Every Tuesday 7 until 11 pm anyone welcome to join for pool practice in our public bar.

This autumn we had a day out at the races, Family fun day and crinders with singer Amy Baker, sandwich lunch following the final cricket match of the season (win to us!), quiz nights, wine tasting with Baythorne Wines, Harvest Festival for the Church, music from Le Cruze and private parties.



Isabella and Ellie-Ann's Mini Café Fundraiser

What we first did when we got there...

When we got there, we set up the mouth-watering cake and drink stand so it was ready and out of the way later when we set up everything else. The cake stand definitely took longer than the drinks one, but it was totally worth it afterwards. Whilst setting up, we taste tested the cupcakes and drinks (they were absolutely delicious). Unexpectedly, before we had even started selling, people were already asking when we would be ready to sell and looking at all the cakes we had on sale.

Within about 5 minutes or so, people were crowding around our stall like crazy (it was quite funny though) and it felt so good considering we were the only stall there along with a little friend (Caine) who made a sweet treats stand, and did really well even though he's five years old.



What we did during the busy day...

During the day, we sold many, many flavoursome cakes, we literally had absolutely no time between to count how much money we really raised from selling a whole bunch of fantastic cakes. Afterwards, we had hardly any cakes left to sell, so we had to re-stock. The cakes that we had to re-stock were the cupcakes (luckily we had more than enough of them).

Why did we choose to do this?

We chose to do this because we wanted to raise money to get more children's play equipment for Toppesfield Park. We'd had this idea for ages and we finally had the opportunity to do it, so of course, without a doubt, we took it! When we tell you how much we all raised your minds are going to explode!



Both of us are extremely proud of what we did and what it will mean to other people in the future. Of course, things don't just happen overnight, but having had the money that we raised was amazing and we felt so good when it got sent off to the Parish Council so that they could try their best to help Toppesfield Park get some more children's play equipment on it.

What we did at the end of the day...

At the end of the day we started packing everything up until we heard the singer setting up ready for her part in the spotlight. Instantly, we ran inside and listened to the immaculate lady start singing. The pair of us started dancing... it was really funny though because we had absolutely no idea what we were doing. We were inside all nice and warm, whilst the parents were outside packing up everything. By now, it was pitch black! It was totally worth it because we raised so much and it felt unimaginably great.

THE GRAND REVEAL...

Now, you've waited long enough to hear how much was raised by ourselves at our delicious cake stand. Our cake stall raised... **£205!!**

Thank yous

We would love to end this article on a cheerful note. Just so everyone knows, both of us are extremely grateful to everyone, especially the people that donated cakes to us so we could reach for the stars and sell as many cakes as possible. We had a few friends pop by to donate cakes, like Erin and Belle, and we are extremely grateful.

Thank You So Much For Reading This And Knowing How Grateful We Really Are!



Look out for the next fundraiser! Any ideas welcome!

Thank You For Reading!!

Coffee, Cake and Catch up

Following the success of the Coffee, Cake and Catch up morning in July, the parish council decided to repeat the event.

⇒ Saturday 13th November is the date.

⇒ 10:00am is the time

⇒ Toppesfield village hall is the venue.

Come along and bring a friend and meet a friend!



[This Photo](#) by Unknown



THE JOY OF COMPOSTING

(or getting the men to do something useful)

Home composting is an extremely environmentally-friendly way of dealing with kitchen and garden waste, **AND** it produces compost that can be used as an excellent soil improver.

What's not to like?

The benefits of compost include:

- Preventing Soil Erosion.
- Promoting Healthier Plant Growth.
- Reducing Waste.
- Combating Climate Change.
- Improving Soil Health.

Composting is useful in all gardens. Only in the smallest is it difficult to find space for a compost heap.

The site and container

It is important that the site does not suffer extremes of temperature and moisture. The micro-organisms that convert the waste to compost work best in constant conditions.



Before.....

It is often more convenient to use a shady area of the garden.

An earth base allows drainage and access to soil organisms; if you have to compost on a hard surface, then add a spadeful of soil to the compost bin.

Compost bins retain warmth and moisture and make better compost more quickly, but even an open heap will compost eventually. Any of the compost bins on the market should produce compost as long as they exclude rain, retain some warmth, allow drainage and let in air. And does size matter? Well, yes it does as bins less than 1 cubic m in size are much less effective than larger ones.

Getting the right balance of composting materials

- Aim for between 25 and 50 percent soft green materials (e.g. grass clippings, vegetable kitchen waste, or manure) to feed the micro-organisms
- The remainder should be woody brown material (e.g. prunings, wood chippings, paper, cardboard, straw or dead leaves)

The bacteria and micro-organisms that produce the compost function best when the balance of green and brown materials is correct.

Don't let any single material dominate the heap - especially grass clippings, as these can become a slimy, smelly mess on their own.

Kitchen waste and grass clippings are best mixed with brown woody material, as they tend to be wet and easily compacted, excluding air.

Some common composting materials

- **Green:** Grass clippings; soft, leafy plants; fruit and vegetables, **uncooked** kitchen waste; selected pet waste/ bedding
- **Brown:** prunings and hedge trimmings (ideally shredded), woodchip, leaves, paper and card (torn up or shredded), straw, plant stems
- **Accelerators and activators:** Products such as 'Garotta' are sometimes added where green waste is in short supply. They contain high levels of nitrogen (a nutrient found in green waste), but should not be necessary if green waste is plentiful. It is also possible to purchase activators containing carbon (a nutrient found in brown woody waste); these are aimed at composting grass clippings or other green waste where there is insufficient brown waste

Turning the heap

Turning the heap adds air; air is necessary for composting to occur. If the heap is too wet or becomes compacted, then the composting process is slower as less air is available.

Ideally, place a lot of composting materials on the heap in one go, and turn it periodically (perhaps every month) to introduce air. Failure to turn the heap is probably the main cause of poor results.

Many gardeners are unable to fill the heap in one go, as they accumulate waste gradually. Because of this, home-made compost is seldom as perfect as municipal compost, but it is still effective.

Remember to keep the heap moist in dry weather – turning will give you an opportunity to assess the moisture level.



...and after

When is the compost ready?

Garden compost can take between six months and two years to reach maturity. Mature compost will be dark brown, with a crumbly soil-like texture and a smell resembling damp woodland.

It is unlikely that all the material in the heap will be like this, but any remaining un-rotted material can be added to the next batch of composting materials.

Problems

Sometimes the results of composting are not as expected.

- **Wet, slimy and strong-smelling compost:** Too little air and too much water are often to blame. Cover the heap to protect against rain and add more brown waste.
- **Dry and fibrous with little rotting:** Usually caused by too little moisture and too much brown material. Add more green waste, or try a commercial activator or accelerator such as 'Garotta'. Alternatively, add fish, blood and bone fertiliser at 270g (9oz) per 15cm (6in) layer of compost.

(Information from Royal Horticultural Society <https://www.rhs.org.uk/advice/profile?pid=444>)

The Next Village Markets will be held at

Toppesfield Village Hall on

Saturday 6th November

10.30 am – 12.30pm

Please pop along to see what is on offer from fresh meat, jams, pastries, and cakes to handmade crafts, cards, jewellery and more.

Or pop in for a tasty bacon roll and a cuppa with friends.

The Christmas Market will be held on the 4th December

At Toppesfield Village Hall

11am–3pm

The regular stalls will be there plus lots of others—please come along and join in with the start of the Christmas Celebrations.

Please continue to be respectful of social distancing and mask wearing.

2021 GRAPE HARVEST

A huge thanks to everyone who helped with our grape harvest this year. The lack of sun this summer meant that the harvest was the latest ever. Fortunately, the weather was kind to us on the day. We had a shower late morning on the Bacchus day but this was just at the right time for our coffee break.

Clare, Zoe and Rosie did a fantastic job on the cake front! We decided to do a hot lunch of chilli, jacket potatoes and quiche this year as the weather was a bit colder; this was followed by an extensive cheeseboard and washed down with Toppesfield Bacchus and delicious beer kindly provided by Pumphouse Brewery. All in all a great community day – thanks again for your support! There is a fantastic video of the day on the news page of our website – see if you can spot the imposters: <https://www.toppesfieldvineyard.co.uk/news/>



PUMPHOUSE

BREWERY



Bottled beers for Christmas

Through November and December we will have the full range of bottled beers available to purchase, direct from the brewery, including our NEW Seasonal Special, Dark Chocolate; plus gift packs and '12 Beer Days of Christmas' boxes.

**Now open five days a week, Monday to Friday 10 - 4
and on Saturday 4 December (Christmas Market Day)**

and more places to enjoy a Pumphouse pint

Since the last newsletter we have doubled production of draught beers and every pint of it is going to a growing number of pubs and clubs around the region. You can enjoy a selection of Pumphouse fine real ales at The Green Man plus the White Hart Great Yeldham, Globe Clare, Fox on the Green Finchingfield, Plough Birdbrook, Leather Bottle Pleshey, Black Lion High Roding, Spotted Dog Barnston, Railway Arms Saffron Walden, Saracen's Head Dunmow and The Dunmow Club.

CALLING ALL KNITTERS and CRAFTERS

Christmas is coming to St. Margaret's!



We would like to launch an appeal for Knitters and Crafters to help us to provide knitted and/or Pom Pom baubles for people to take home with them as a gift from St. Margaret's Church, so that as many homes as possible in Toppesfield, Gainsford End and nearby have a small blessing for Christmas from the Church in their homes. When finished, they will be hung on the Church Porch entrance gates and on the Lychgate for people to help themselves. If there are any left over, they will be added to the Christmas decorations in the Church. After such a challenging time recently, we are hoping that this will be something fun to do together for Christmas.

If you need a pattern, lots of different ideas come up on an internet search, such as *Knit with Hannah* on YouTube; or if you belong to Ravelry (free web-site for Knitters), there are loads of free patterns available; or you may already have your own pattern.

If you are not a Knitter, but more of a Crafter, bauble sized Pom Poms are a brilliant alternative. Again, if you do an internet search, lots of different ideas come up, but one that I found really easy to follow was on WikiHow: <https://www.wikihow.com/Make-a-Yarn-Pompom> - as I am not a proficient knitter, I think that will be my preferred option!

If you don't have access to the internet, I have printed off some copies of a pattern, which I will be very happy to pass on, just give me a call.

Also, perhaps you have some spare wool that you could donate to us - we would be extremely grateful.

A box will be in the Church for donations of wool and for your finished decorations.

Please contact Tia Stickland on 01787 236095 if you have any questions.

Toppesfield Parish Neighbourhood Plan

As some of you will be aware there has been a major announcement concerning the potential development of two new prisons in Wethersfield. Given that the staffing requirement, which is in excess of 1000, there will be a significant impact on local housing. It is therefore even more imperative that our community has a comprehensive neighbourhood plan.

The impact of the plan is always going to be proportional to the number of people who contribute. It would be great if more of the questionnaires, available from the village shop, could be completed.

David Oxnam

Toppesfield Parish Council Notice of councillor vacancy

There is an opportunity to fill a vacancy on the Parish Council by co-option following the resignation of Cllr Daisy Watson

BEING A PARISH COUNCILLOR The Council has a number of duties and many powers, which are administered on behalf of the residents of the Parish. A Parish Councillor needs to be committed to the local Community and therefore a Member's input is important and a hands-on approach is needed on some occasions.

- Are you interested in serving your local community?
- Do you want to serve your Community?
- Do you have time or expertise which could benefit your Community?
- Do you want to make a difference to all those around you?
- Are you concerned about your local area?
- Do you want to represent the views of local people?
- If you would like to make a difference, and be involved in shaping the future of your local Community, why not step forward and apply to become a Parish Councillor?

If you are interested in becoming a Parish Councillor and can fulfil the eligibility criteria then please contact the clerk via email: clerk.toppesfieldparishcouncil@gmail.com

The closing date for submissions is **Monday, 22nd November 2021** at 9am.

The eligibility criteria are as follows:

1. Be over 18 years of age
2. Be a British citizen or a citizen of the Republic of Ireland.
3. Be on the parish electoral roll on the day of co-option and thereafter, or
4. Have occupied as owner or tenant any land or other premises in the parish during the whole of the 12 months preceding the day of co-option, or
5. Have had your principal or only place of work in the area during the whole of the 12 months preceding the day of co-option, or
6. Have resided in the parish, or within 3 miles of it, for the whole of the 12 months prior to co-option
7. Have not held any paid office or employment under this authority
8. Have not been a person adjudged bankrupt
9. Have not been a person who, within five years before the day of co-option, has been convicted of any offence and has had passed on him/her a sentence of imprisonment for a period of not less than 3 months (whether suspended or not) without option of a fine.

For information: Parish Council meetings are held monthly normally on the first Thursday of the month at 7.30pm. Councillors have to abide by a code of conduct, as well as Standing Orders, Financial Regulations and other Policies adopted by the Parish Council and complete and sign certain documentation which becomes a public record. It is expected that all councillors attempt to attend all meetings wherever possible.

Members of the public can attend the meetings to contribute. Training for Councillors will be provided. All members are encouraged to take on an area of responsibility to help share the workload and to ensure that the Council maximises its efficiency. Please contact the Clerk for more information or you are interested in applying.

St. Margaret's C of E Primary School



As the days become shorter it is very clear that Autumn has arrived! However, despite the rather changeable weather, there has been lots going on over the 7 weeks since we have returned following our summer holiday.

We have enjoyed putting together our harvest festival video which can be seen on our school website. Perhaps you would like to take a look?

<https://st-margarets-cofe.primarysite.media/>

The children have also enjoyed getting stuck into their new topics where they are thinking about some questions that have been asked which include: 'What makes me special?', 'How has life changed?', 'Who is in control?' and 'Evacuee or refugee?'. The children are now asked these questions by Maggie and they will be reporting their findings back to her!



Hello!
My name is
Maggie!
I'm very
pleased to
meet you.

We also held our first face-to-face parents evening in 20 months. It was lovely to be able to invite parents back into the school and to be able to enjoy conversations with them. We hope to move back towards holding more face-to-face events to which we are able to invite parents and the wider community whilst also working to keep everyone safe.

ROCK CHARITY EVENT

TOPPESFIELD VILLAGE HALL CO9 4DR
20th NOVEMBER - IN AID OF

Blues Night



CANCER RESEARCH UK

Licensed Bar
7.30 - 11.00pm



JIMMY GAYNOR

STUART MIZON

SAM BURNETT

CHRIS AMES

Tickets
£12.00
inclusive of raffle ticket
& bar snacks

advanced bookings only

email: pault1954@yahoo.co.uk - tel: 07824 665915

TOPPESFIELD Community Shop



Support your community shop
to enable them to support you!

OPENING TIMES

Monday	8.30am - 4.00pm
Tuesday	8.30am - 4.00pm
Wednesday	8.30am - 4.00pm
Thursday	8.30am - 4.00pm
Friday	8.30am - 4.00pm
Saturday	10.00am - 12.30pm



WEDNESDAY 10am - 1pm



Locally grown Nordmann Fir Christmas trees

From Toppesfield

Ready and available from Mid-November
From 4ft up to 8ft

Can delivery free of charge up to a radius of five miles
then delivery charge will apply.

Call Jane 07790476137 or
Barnaby 07952235161
Email: janedaines@yahoo.co.uk

BASICS Essex Accident Rescue Service

Volunteer doctors and paramedics help save lives in communities across Essex and can be at your side in minutes, day or night. We respond to incidents at the request of the East of England Ambulance Service NHS Trust, we supplement the outstanding service provided by our ambulance clinicians. BASICS Essex receives no government funding and rely solely upon donations.

Boost funds for our cause join our lottery.

It's the easiest way for you to help us raise money.

Win prizes of up to £25,000!

Tickets only cost £1 per week

50% of all tickets sold from our page go to us!

Join today it only takes a minute.

To start supporting, visit:

www.onelottery.co.uk

and search for: **BASICS ESSEX**





At **Community360** we understand the importance of motivating people to keep active, particularly post lockdown when people have become isolated and this in turn has affected their mental and physical well-being.

We are always looking for **volunteers** to support our walks. Please see below.

Walking plays such an important part in keeping us both physically and mentally fit.

This role will be both a supportive and encouraging role, as we want to ensure everyone feels happy and confident to take part, whatever their walking abilities or experiences.

You will be supported and offered training, but would also be expected to manage the walks independently, once you feel confident to do so.

Within the Braintree District, currently we hold walks in Finchingfield, Witham, Coggeshall, Shalford, and Halstead. We also cover areas in Colchester. We are always looking to expand our walks, so if you are able to help out in a certain area, then please do get in touch.

Skills

You will need to be active and have an understanding of the importance and benefits of being outside in nature.

A good communicator and listener, treating everyone with respect and being non-judgemental at all times.

The walks are not hikes and there will be mixed abilities, so you will need a flexible approach.

Please contact Jo Bryant on 01206 505250 or

email jobryant@community360.org.uk





Please join in the fun on Saturday 4th December for

Toppesfield Christmas Celebrations

Toppesfield Village Market

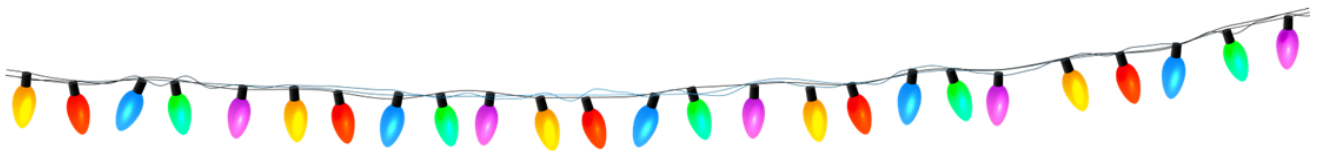
11am - 3pm start your Christmas shopping!



Christmas Tree Display and arts and crafts

in St Margaret's of Antioch church

From 4pm—5.45pm



From 6pm— switching on of the lights.

Gather round the village pump, enjoy a glass of mulled wine and sausage rolls and join in with us for some carol singing .

Meet some festive friends and help us countdown to turn on the village tree lights.

Please feel free to put up your lights and start your Christmas celebrations with us on Saturday 4th December.



Little Chestnuts Pre-school brings
Happy's Circus
to Toppesfield



Sunday 19th June 2022
@Toppesfield Park 1.30pm

First 300 Early bird tickets available from
13th November. £8 per ticket
All tickets after that £10 per ticket.
Children 2 years and under can sit on laps
free entry.



Tickets
available from

manager@littlechestnutspre-school.co.uk

collection from the village hall

Toppesfield

CASH ONLY.

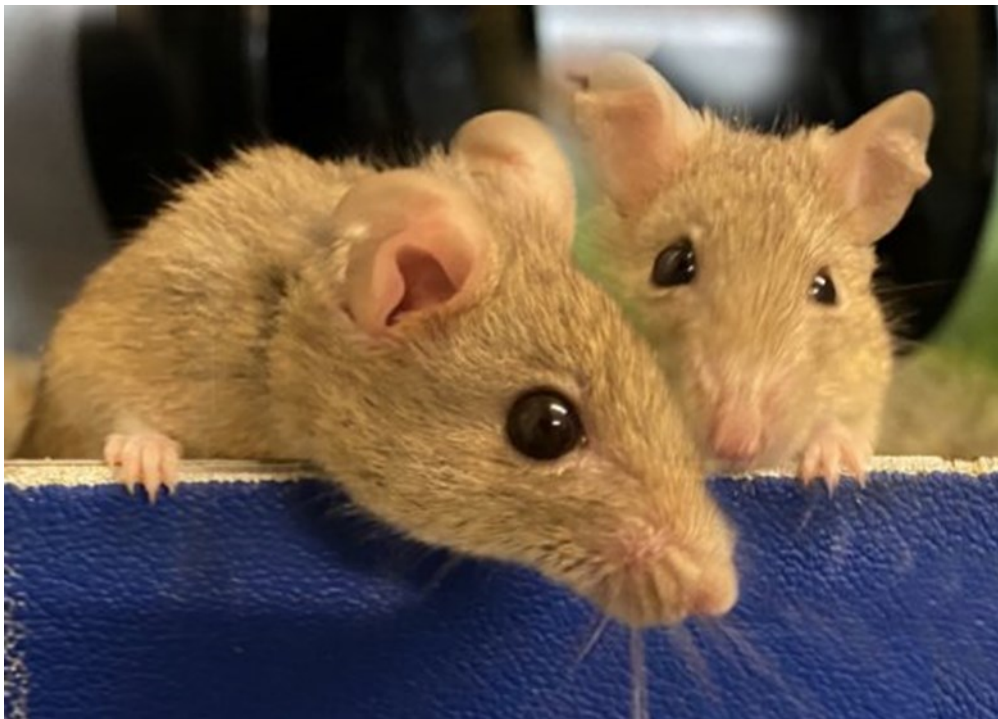
Buy early these will make a great Christmas gift!



Danaher Animal Home

Please say hello to our trio of girlies, Mousearella, Mousecapone and Wensleydale. These sweet girls arrived at Danaher after their previous owner found themselves getting a little overrun with multimammate mice and had therefore asked for our help in finding them all their forever homes.

These 3 girls are quite timid but with regular handling should learn to trust their new family and learn to enjoy some supervised play time out from their enclosure. Multimammate's get quite close to their cage mates and these three are no exception to that rule, they are always laying snuggled up together in the same house although there are multiple houses to choose from.





What's on in November & December?

- November 6th Village Market 10:30am – 12:30pm, Village Hall
- November 7th Morning Prayer 11.00am, St Margaret's Church
- November 7th Music from *Retro* 8:00pm, Green Man
- November 12th Church Supper Auction 7:00pm, Village Hall
- November 13th Coffee, Cake & Catch up 10:00am, Village Hall
- November 13th Quiz Night, 7:30pm, Green Man
- November 14th REMEMBRANCE SUNDAY SERVICE 10.45am, St Margaret's Church
- November 20th Rock & Blues Night 7:30pm, Village Hall (in aid of Cancer Research UK)
- November 21st Morning Prayer 11.00am, St Margaret's Church
- November 28th Holy Communion 11.00am, St Margaret's Church
- December 4th Christmas Market 11:00am – 3:00pm, Village Hall
- December 4th Christmas tree display and Children's craft activities 4:00-5:45pm, St Margaret's Church
- December 4th Switching-on of tree lights, Mulled wine & carols 6:00pm, around the village pump
- December 5th Morning Prayer 11.00am, St Margaret's Church
- December 11th Quiz Night 7:30, Green Man
- December 12th Holy Communion 11.00am, St Margaret's Church
- December 19th Carol Service 3:00pm, St Margaret's Church
- December 24th Christmas Eve Holy Communion 6:30pm, St Margaret's Church
- December 25th Christmas Day Family Service 11:00am, St Margaret's Church
- December 31st New Year's Eve celebrations, all evening until the early hours, Green Man

And, finally, in topical vein.....

