



May / June 2026

Edition 211

**TOPPESFIELD
& GAINSFORD END** *Parish Newsletter*



USEFUL NUMBERS

Braintree District Council	01376 552525
Colchester Hospital	01206 747474
Doctors Car Service	07845 596092
Freshwell Health Centre	01371 810328
Hedingham Medical Centre:	01787 461465
Kaaren Berry, Parish Clerk	07341 264219
Little Chestnuts Preschool	079018 80914
Pumphouse Brewery	07801 042545
Church Warden Brian Moody	01787 237974
St Margaret's School	01787 237354
The Green Man Public House	01787 237418
Toppesfield Community Shop	07895 510767
Toppesfield Village Hall Bookings	
Coral Fordham	07876 553332
Vets - Ardmore, Gt Yeldham	01787 238255
Medical Equipment	01787 238146
Vicar of St. Margaret's Church	
Rev'd Tia Stickland	07889 284711

TOPPESFIELD COMMUNITY SHOP

Church Lane, Toppesfield. Tel: 07895 510767

Fresh Fruit & Vegetables, Milk, Newspapers, Confectionery, Pet Food, Dairy Products, Meat & Poultry, Coal and Kindling, Cards, Stationery and lots more!

Monday—Friday

8.30 am— 4.00 pm

Saturday—10.00 am—12.30pm

TOPPESFIELD POST OFFICE

Church Lane, Toppesfield

Wednesday - 10.00 am—1pm

Services include: Special Delivery, Mobile Top Up, Insurance Services, Household payments, Travel Money, Moneygrams, Savings Accounts plus more!

Toppesfield Parish Council

Your Councillors are - Kitty Bourlet (Chair), Paula Edwards-Holmes (Vice Chair), Amanda Smith, Chris Neale, Jeremy Graves and Jane Daines.

Parish Clerk — Kaaren Berry

Parish Council Meetings are normally held on the first Thursday of every month in the village hall. Please check the website to confirm dates of meetings.

You are welcome to attend the Open Session which starts at 7.30pm.

Toppesfield & Gainsford End Parish Newsletter — Published by Toppesfield Parish Council

Editor: clerk.toppesfieldparishcouncil@gmail.com

Please submit your articles for the next newsletter by 15th June 2026

Please see our online resources to find out what is happening

Facebook Pages :-

Toppesfield & Gainsford End Community

Toppesfield Village Hall

Toppesfield Village Stores

The Green Man, Toppesfield

Pumphouse Community Brewery

Toppesfield and Gainsford End Neighbourhood and Development Plan

Twitter & Instagram— Toppesfield & Gainsford End Community

Website—<https://e-voice.org.uk/toppesfield-parish-council/>



From the Parish Council



Dear Residents,

Over the past couple of months, the Parish Council has been busy working through a range of local matters, and this edition gives a helpful snapshot of what's been happening and what's coming next. From ongoing discussions around parking and road safety, to progress with the Neighbourhood Plan and plans for future community events, there is plenty underway behind the scenes.

Alongside this, it's great to see so many activities and events being organised across the parish in the months ahead — from the church fete and village show to local groups, fundraisers and social gatherings. These moments are what keep the parish active and connected, and they rely on people stepping forward to take part.

That's where I'd like to encourage you to get involved. Whether it's attending an event, volunteering your time, sharing an idea, or even considering joining the Parish Council, your contribution really does matter. We currently have a councillor vacancy, and it's a great opportunity for anyone who would like to have a direct role in shaping local decisions.

We also welcome residents to attend our monthly meetings or raise any concerns or suggestions — hearing from you helps ensure we are focusing on what matters most to the community.

Thank you, as always, to everyone who gives their time to support village life. I hope you enjoy this edition, and I look forward to seeing many of you at events over the coming months.

With best wishes,
Kitty Bourlet
Parish Chair

Parish Council Information

A summary of Parish Council goings-on at the March and April meetings:

At the March meeting:

Cllr Richard van Dulken reported:

- That the current numbers at the Wethersfield Asylum Centre are approx. 650 and no issues have been reported.
- The Councillors Community Grant is guaranteed for the next 2 years and is increasing to £1500 from April 2026. There is still a small amount left in this year's pot and applications are welcomed.
- Braintree District Council (BDC) has passed its budget and there will be a freeze on its part of the council tax. This makes up 10% of the overall council tax bill.
- Garden Waste subscriptions are frozen at £55.00 for the year.
- Local Plan – this is going to consultation and details can be found on the BDC website.
- The new waste bins are being distributed and the new collections begin on the 6th June 2026.
- Local government reorganisation – hopefully in the middle of March it will be known which districts will be unified.
- Mayoral elections have been postponed until 2028.
- County Council elections will be going ahead on 7th May 2026.

Other business in the March meeting included:

- The chair of the Cricket Club reported that they have been struggling with numbers in recent years and they will not be running as a cricket club anymore but will run in different ways. They will organise and run the Crinders and Mudball events. Nets will also be run during the nicer months and will be open to everyone.
- Members from Finchingfield Parish Council and the joint neighbourhood plan team gave an update of the progress of the joint plan and presented their comments on Toppesfield's draft Neighbourhood Plan (NHP).
- Communications regarding parking along Church Lane and the issues that come with this were also received.
- The parish council's new website is under construction.
- The Annual village Litter Pick, 18th April 2026 has been arranged and advertised.
- The Parish Council are considering holding a Summer fete for the community.
- A grant application was received from St Margaret's of Antioch Church to help with the clock repairs. After discussions it was agreed to award a £1000 grant.
- Kerb misalignments along Church Lane – this has been raised with Cllr Schwier to progress the repairs.
- The Annual Parish Meeting will be held on 23 April 2026 at 7.30pm.

Parish Council Information continued.

At the April meeting:

Cllr Richard van Dulken reported:

- The new waste bin collections start on the 6th June 2026. Calanders will be available shortly. Green Waste bin permits are being posted out.
- Paid parking was being looked into for Halstead High Street but this has been squashed.
- Public Rights of Way (PROW) are in discussions about Church Lane repairs.
- Local Government Reorganisation – Essex has merged with Colchester and Tendring and will be known as North East Essex Council.
- Parish Elections could be aligned with new unitary elections.
- Cllr van Dulken suggested that the road signs could be clean by volunteers on the litter pick.
- Local Plan consultation is open until 17th April 2026.
- Wethersfield Asylum Centre – there has been a slow increase in residents and currently stands at approx. 800.
- Information has received regarding 6 blocked drains near Cust Hall and a request that BDC clear them.

Other business in the April meeting included:

- Neighbourhood Plan — comments from the public consultation have been received and are being looked at.
- The top 8 priorities have been identified and will be owned by a councillor to take forward.
- The new Grit bin in Park Lane car park has been filled.
- A new parish council website is progressing.
- The RoSPA inspections of the Gainsford End and Toppesfield playing field equipment are to be carried out during May.

Full minutes of each meeting can be found on the parish website:

[Minutes - Toppesfield Parish Council \(e-voice.org.uk\)](https://www.e-voice.org.uk/minutes-toppesfield-parish-council)

If you have any concerns you would like to raise with the Council, ideas for projects or anything you would like to parish council to consider please do get in touch or attend the open session at a Parish Council meeting. There is a public session held at the start of every parish council meeting from 7.30pm —7.45pm.

Parish Council meetings are normally held on the first Thursday of each month but please check the website for confirmation.



St. Margaret of Antioch Toppesfield

**Church services for May and June 2026
are detailed below.**

May 3	Holy Communion 11.00am
May 10	Holy Communion 11.00am
May 17	Family Service 3.00pm
May 24	No service
May 31	Benefice service at Tilbury j Clare 11.00am
June 7	Holy Communion 11.00am
June 14	Holy Communion 11.00am
June 21	Family Service 3.00pm
June 28	No service

Upcoming events to put in the diary:

July 11th Church fete round the church 2pm-4pm

October 10th Cheese and Wine evening in church 7pm-9pm

November 13th Supper Auction in the Village Hall 7 for 7.30pm



The next Messy Church will be held on 27th May 2026
at 10.30am.



St Margaret's Church Fete

This year, St. Margaret's Church Fete is taking place on Saturday 11th July, and I was thinking it would be nice if the Church had its own mini Flower Show.

Nothing elaborate but a few extra displays would be wonderful.

No floristry skills required, just a love of flowers and the joy they bring. As the Church will be serving Refreshments, it would be nice to have a cup of tea, slice of cake and enjoy the floral displays. Flowers and greenery from your own gardens would be lovely.

The Church would supply oasis if required and there are containers at the back of the Church if you need something for your arrangement.

If anyone is interested in doing a small display, even flowers in a vase, to decorate the Church, please contact me on: 07786591409.

Thank you and I look forward to hearing from you.

Wendy Turner.



Toppesfield Walking Group

The walking group are still setting off from the Pump at 10am every Thursday.

All parishioners are welcome to join us with well behaved dogs.

Walks around the parish are generally about 3 to 4 miles.

And it's a good way to meet people and take in some gentle exercise.

Regards

Paul Thompson

Toppesfield and Gainsford End Village Show

Saturday 12th September 2026

Toppesfield Village Hall 2.00pm

- Yes - save the date. The village event of the year.
- Competitive classes. Flowers, Fruit and vegetables, Cookery, Handicraft, Art, Photography and children's classes.
- Stalls
- Games
- Amazing raffle
- Delicious refreshments

Put it in your diary



Advance information on subjects for the photography classes.

Class 44. Close up of flower /flowers.

Class 45. The best photo I have taken.

Class 46. Wildlife in my garden.

Ann Read



Parish Councillor Vacancy

Toppesfield Parish Council are looking for someone to serve as a parish councillor

Are you interested in local current affairs?

Do you wish to serve your Community?

Could you provide a voice for residents?

Would you like to be involved in new project for the parish ?

For further information please see the policy and procedures for councillor vacancy and councillor co-option on the parish council website at: [Policies and Procedures - Toppesfield Parish Council](#) or for an informal chat please contact the Parish Clerk Kaaren Berry on 0707341 264219.

Applications for co-option to be submitted to the clerk at clerk.toppesfieldparishcouncil@gmail.com by 24th May 2026 with a view to co-option being made at the June 2026 parish council meeting.



St. Margaret's C of E Primary School

The second half of the spring term was short but we have still packed a lot in!

We finished the half term with a beautiful Easter service which was confidently led by the children and in which the adults joined us with some excellent singing. Our church services are always open to all, so please do feel free to come along and join us at any of them.

Mrs Cranfield invited parents in to school to join us for school lunches across this term. This was really well received by parents, so it is something we hope to repeat in future years.

At the end of February, the choir enjoyed their annual visit to the O2 in London to take part in Young Voices 2026. This is always a highlight of the year for these children as they take part in a concert singing with a choir of approximately 8000 children. They were an absolute credit to the school and were a joy to spend the day with.

We have been very musical this term, with Year 2 also going out to a music festival at St Peter's school in Sible Hedingham. They joined with 7 other schools for a day of singing. As I was leading the day, I was ably supported by year 6 music leaders who helped make sure everyone was in the right place and doing the right thing at the right time. It was a great success and the children thoroughly enjoyed themselves.

We also held our annual book week, which was excellent, with children engaging really well a visit from author Nadia Finer. They enjoyed thinking about the UFO on the school field and keeping an eye out for evidence of aliens. During the week, we also had a masked reader competition and held a stargazing event for KS2. Many of the children also enjoyed taking part in the competitions during the week. This led into science week with a superb visit from Dr David Willis, a NASA scientist, with the Wonderdome. This ignited the children's curiosity and you could feel the awe and wonder inside the dome.

We have also had the football team going out to a tournament hosted by Hedingham school where they won. They were excellent and, again, a credit to the school.

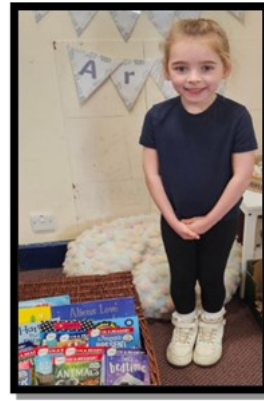
Our thanks to FOSMs for running the Easter raffles and congratulations to our winners. There were some amazing hampers as prizes! Our thanks also to FOSMs for continuing to support the coffee afternoons and providing refreshments at various events throughout the school year- their offerings are always a real treat!

Please do join us at our open coffee afternoons, which are open to anyone and everyone and are a fantastic opportunity for our young people to support the community and learn some life skills as they welcome people into our school. Please support them by coming along – everyone is welcome and the more people we have the more joyous the event! There is one remaining coffee afternoon on 26th June at 2pm and we would really like to see as many people there as possible! All our coffee afternoons have a different focus. You can find out what will be happening at each one by following us on social media. We hope to see lots of you there.

Please do follow us on social media to keep up to date with what we are doing - we are on both Facebook (St. Margaret's CofE Primary School Toppesfield) and Instagram (@stmargaretstop). We would love to see as many people as possible liking and sharing our posts to help show off some of the amazing things we are doing and increase our reach so that the wide community can see all the amazing things we do.

Facebook: [St. Margaret's CofE Primary School, Toppesfield](#)

Instagram: [stmargaretstop](#)





Become a School Governor

Help Shape Our School's Future

Are you passionate about education and eager to make a meaningful difference in your local community? We are seeking dedicated and enthusiastic individuals to join our governing body as school governors. St Margaret's C of E Primary School in Toppesfield is a small rural school serving its local community. The school is an inclusive and caring school where our skilled and passionate teachers create exciting learning opportunities.

As a school governor, you'll play a vital role in setting our school's strategic direction, supporting staff and students, and ensuring high standards of achievement. We hold a governing board meeting once a term and encourage governors to visit the school at least once a term as well as developing the role by attending training.

As a governor you will:

- Contribute to important decisions about the school's future

- Work alongside fellow governors and the leadership team

- Champion the voice of parents, carers, and students

We can offer you:

- A small, friendly board of governors

- Opportunities for leadership development

- The chance to spend time in our wonderful school

If you're committed, collaborative and interested in helping every child reach their potential, we would love to hear from you. We are especially interested in people with educational experience or those who are members of the church but would welcome expertise in other areas too. For further details or to apply, please contact Julie Campbell, Chair of Governors gov.jcampbell@st-margaretscofe.essex.sch.

Training and support will be provided.

Join us and help shape the future of our school!



Green Man Toilets Upgraded Thanks to Local Volunteers and Trades People

TCP is delighted to announce that the toilets are currently being upgraded.

The Ladies' facilities are almost finished, with the Gents scheduled for completion by 8th May. This significant improvement follows a period of careful planning and considerable hands-on effort, addressing works that were long overdue.

The upgrade project aims to elevate the standard of the facilities, providing necessary repairs, refreshed finishes, and practical enhancements. These improvements are designed to help maintain the toilets in better condition on a day-to-day basis. By updating the facilities, the pub continues to serve as a welcoming meeting place for the entire community, ensuring visitors enjoy an improved experience.

A heartfelt thank you goes out to the volunteers who dedicated their time, skills, and energy to bring these upgrades to fruition. Whether it was lifting, carrying, painting, cleaning, or repairing, the support from local people exemplifies what makes a community pub so special. Particular thanks go out to Boyd and Gill, who have nearly completed the Ladies' toilets by themselves, working in their own time.

If you haven't been to the pub recently, please stop by to see the improvements for yourself. The next project, which is set to begin soon, will involve constructing a pathway in the garden.

Anyone interested in participating in future pub projects is encouraged to speak with a member of the team.



Toppesfield Village Hall – Newsletter April 2026

We held our AGM on the 16th April and despite our plea in the last newsletter, very disappointingly no one from the village at all came to support us. We know AGMs are not the most interesting of meetings and people are worried will be harassed into joining the committee but they are also an opportunity to show support to the volunteers that manage the hall for the good of the village, and a way to hear what the village want from the hall and any ideas on what we can and should be providing. The total lack of interest even from organisations and people who use the hall indicates that we are either doing our roles really well or that actually they don't give a thought or care to the work that goes into keeping it open. Sad to see this after the incredible efforts from our forebears, many no longer with us, that went into creating this community hall over 60 years ago

However we did form a committee and now have in place new positions to continue for this coming year at least.

Following were elected

Chairperson	Andrea Chinery
Secretary & bookings	Coral Fordham
Treasurer	Frances Winter
	Maureen Dimmock
	Vicky Wyeth

Any future bookings please now use following contact details

Email to Toppesfieldillagehall@gmail.com

Telephone: Coral Fordham 07876553332



The parish council are looking at hosting a First Aid Awareness session shortly which has been offered by a local trainer.

The session will last approximately 2 to 4 hours where an overview of basic first aid will be given, along with defibrillator and resuscitation guidance.

The session will only be open to a limited number of people so if you are interested in attending please can you contact the parish clerk on clerk.toppesfieldparishcouncil@gmail.com or by calling 07341264219

The date is yet to be confirmed but those who express an interest will be notified once it has been arranged.

People attend first aid courses for many reasons, here are just a few: learn life saving skills, empowers you to take action in an emergency and prompt first aid intervention can significantly impact recovery.

If you are already first aid trained a refresher course helps keep you up to date with changes and builds your confidence.

So why not come along.





Little Chestnuts – Summer Term Update

Welcome to the Summer Term

As we begin the summer term, we wanted to share some changes that have been made to Little Chestnuts, along with details about events coming up over the next few months.

New Additions to Our Setting

In September, the children returned to pre-school and discovered our new garden play equipment. This included a climbing frame, balancing equipment, a kitchen, and a role play area. They have enjoyed developing their climbing skills and making cakes and soup with sand and soil.

Weekly Activities and Outdoor Learning

The children take part in weekly dance classes led by Sarah from ADC Dance, sports lessons with Ben from Multisports, yoga, and parachute play. We also visit our outdoor learning area to make smores, build dens, and enjoy activities that often involve plenty of mud!

New Learning and Meeting Room

We are very proud of our new learning and meeting room, which provides a private space for meetings with parents, staff, and outside professionals. It is also a dedicated area for assessments and activities with the children.

Growing and Gardening Projects

This term, we are growing our own produce. Maintenance work at the allotment will allow us to cultivate runner beans, pumpkins, and other vegetables. There will be a digging and insect finding area too. In our garden space at the hall, we will grow tomatoes, cucumbers, and carrots. All our home-grown produce will be used for lunches and snacks within the setting.

We are also planting sunflower seeds, observing them as they grow, measuring their height, and entering them in the flower show in September.

Transitions to Primary School

Nineteen children will be leaving in July to start their new adventure at primary school, with seven joining St Margaret's. This term, we will be planning each child's transition to their new schools.

Upcoming Events

- *Sunday 31st May: Stambourne Tractor Run with activities for younger children.*
- *Saturday 6th June from 13:30: Family Funday and Open Day.*
- *Saturday 11th July: Toppesfield Church Fete, with activities and a walking treasure hunt.*

We look forward to seeing you at these events.

Enrolment for September 2026

Spaces are available from September 2026. If you would like to book a visit to see what we offer and meet the team, please call 07901880914 or email manager@littlechestnutspre-school.co.uk.

Best Wishes

Andrea, Lou and the Little Chestnuts team x





TOPPESFIELD SCULPTURE & WINE FESTIVAL

**TOPPESFIELD VINEYARD, HARROW HILL,
TOPPESFIELD, HALSTEAD, ESSEX CO9 4LX**

**FRIDAY 12th JUNE -
SUNDAY 14th JUNE**

FRIDAY 12th JUNE 7pm - 10pm
Charity night for Kids Inspire



Kids Inspire
www.kidsinspire.org.uk

**£20 entrance per person to include
first glass of wine and canapés**
Book on www.TicketSource.co.uk

SATURDAY 13th JUNE 12noon - 6pm

SUNDAY 14th JUNE 12noon - 6pm

£15 entrance per adult
**£7 entrance per child to include
optional sculpture workshop**
Food and drink available to
purchase on site
Book on www.TicketSource.co.uk

Come and enjoy award winning
wine and the beautiful sculptures
at Toppesfield Vineyard

All sculptures are for sale

For more details contact

HIGH RODING ART

Sarah Stevenson

07889 226877

Sarah Love

07917 654925

info@toppesfieldvineyard.co.uk





Parking along Church Lane

The Parish Council have received several complaints regarding the parking along Church Lane.

We all know the width of Church Lane is not great and when cars are parked alongside the houses it becomes effectively a one way road for other users.

Also it is known that at school drop off and collection times the road becomes very busy so bad parking adds to the problems of people turning round to drop children off at the school.

Unfortunately there have been several incidents recently where vehicles have parked on the corner by the school and on the corners of Dordell Court. This has resulted in the dustcart being unable to travel down Church Lane to the end houses and almost hindered residents returning to or leaving their properties. If an emergency vehicle was needed it would not have been able to get through.

With the amount of parked cars it also hinders the crossing of the road for everyone, with people appearing between parked cars to cross to the pavement along the church wall. With this in mind please slow down and watch your speed.

The wonky kerbstones along the path are deteriorating quickly due to the amount of heavy vehicles mounting the kerb to go past the parked cars. The kerbs have been marked for repair but no date has been confirmed yet.

Please can everyone be respectful as to where they park, even if it is only for a short time and watch their speed. A little care and attention will reduce the risk of an accident or more damage to vehicles.

Thank you for your help in keeping our roads safer.



Toppesfield Allotments - Paul Thompson, Chair

Here is what to do on the allotment in May, June and July

May = planting + weeding + watering discipline

June = maintenance + harvesting early crops

July = peak growth + heavy watering + succession sowing

I am busy harvesting my Asparagus which started sprouting in April

Now let's go deeper and make this genuinely useful for a *community* allotment, where tasks need to be shared, predictable, and seasonally smart.

May — The Big Push (Planting & Establishing)

May is the month where everything suddenly needs doing at once. The trick is to prioritise what *must* go in the ground before it's too late.

Key Tasks

- **Plant out tender crops** Tomatoes, courgettes, squash, pumpkins, sweetcorn, beans (runner & French). These can finally go outside once frost risk is gone.
- **Direct sow fast growers**
 - Beetroot
 - Carrots
 - Lettuce
 - Radish
 - Spinach
 - Spring onions
- **Prepare beds**
 - Add compost or well-rotted manure
 - Mulch paths to suppress weeds
 - Set up supports for beans and peas *before* planting
- **Weeding becomes non-negotiable** Weekly weeding prevents a summer-long battle.
- **Watering rota** Establish a shared schedule so seedlings don't dry out.

Good community jobs

- Build wigwams for beans
- Create a shared compost area
- Mulch communal paths
- Plant pollinator-friendly flowers (marigolds, calendula, borage)

June — Growth, Maintenance & First Harvests

June is calmer than May, but everything grows fast — including weeds.

Key Tasks

- **Harvest early crops**
 - Lettuce
 - Radish
 - Broad beans
 - Early potatoes
 - Spinach
 - Strawberries
- **Tie in and support plants** Tomatoes, peas, cucumbers, and climbing beans need weekly attention.
- **Water deeply, not lightly** Especially in dry spells. A community rota is essential.
- **Succession sowing** Keep the allotment productive by sowing:
 - Lettuce
 - Beetroot
 - Carrots
 - Herbs (coriander, dill, basil)
 - French beans
- **Pest patrol**
 - Slugs on young plants
 - Blackfly on broad beans
 - Cabbage white butterflies (net brassicas)

Good community jobs

- Create a watering rota
- Mulch beds to reduce water use
- Install rainwater collection if possible
- Organise a “weeding hour” each week

July — Peak Summer, Peak Workload

July is when the allotment looks amazing but needs constant attention.

Key Tasks

Harvesting in full swing

- Courgettes
 - Peas & beans
 - Tomatoes (late July)
 - Cucumbers
 - Soft fruit
 - Second-early potatoes
-
- **Watering is critical** Deep watering 2–3 times a week is better than daily sprinkling.
 - **Feed hungry crops** Tomatoes, squash, cucumbers, and sweetcorn benefit from weekly feed.
 - **Keep sowing** For late summer/autumn harvests:
 - Beetroot
 - Carrots
 - Kale
 - Chard
 - Turnips
 - Autumn lettuce
 - Kohlrabi
 - **Weed control** Mulching helps massively now.
 - **Plan for late summer** Clear spent crops and prepare space for autumn brassicas.

Good community jobs

- Shared harvesting days
- Watering teams
- A mid-season tidy-up session
- Build or repair compost bins
- Create shade for seedlings

The church tower clock is back!

Last Spring we had to take the clock face down because it was unsafe. Now at last it's been refurbished, the clock itself checked over, and all is back in place telling the time and striking the hour as it has done for the last 250 years.

Thanks to everyone who made this possible by making generous donations towards the cost, and organising and joining in fundraising events.

If you didn't see them here are some photos of the team from Saffron Waldron abseiling down the tower to install the clock face.

Also, for those of you interested in history, here's a photo showing the church in 1871. In those days the clock face was different, a diamond shape (which didn't fit very well on the tower!). Fortunately, by 1900 that had been replaced by the round face we have today. When it was taken down last year we could see that it was last renovated in 1931, so hopefully another 90 or more years will pass before someone has to do it again.

Please don't be surprised if the clock's timekeeping takes a while to settle down. It's 250 years old and we're told by the experts that it will take time to get used to the way its parts work together after refurbishment.

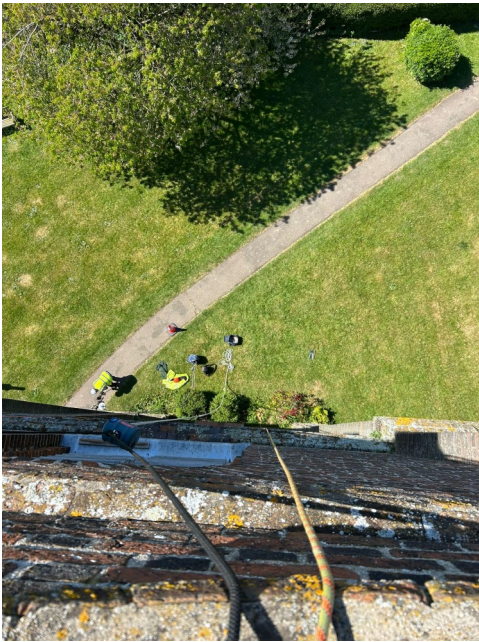
We're very grateful to Richard Evers for winding the clock every three days and making any adjustments necessary. Richard has been doing this ever since he and Julia came to the village. Now is a good time to think about the future. Would anyone like to volunteer to be Richard's apprentice/assistant, learning how the ancient clock works and helping with winding?

As Richard says, climbing the tower and winding the clock isn't a chore; it's more a personal fitness experience!

Would you like to be a volunteer clock winder? Please give Richard Evers a call on 07786861009.







Stambourne Charity Tractor Road Run

Craft fair and Classic car/tractor show
RAISING MONEY FOR



HELP for
HEROES

Sunday 31st May 2026

@ Stambourne Playing field

Tractor Run from 10am

**Craft Fair and Car show opens from
12:30PM**

FREE ENTRY – DONATIONS WELCOME

HOG ROAST

Raffle

BAR

Craft fair

Tea Room

CLASSIC CAR SHOW

PLEASE EMAIL stambournetractorrun@yahoo.com to book in your classic Car. You are welcome to turn up on the day, Entry by donation

BAR OPENING HOURS

Monday - Closed
Tuesday - Thursday 3 - Close
Friday- Sunday 12- Close



KITCHEN OPENING HOURS

Wednesday & Thursday 5-8
Friday & Saturday 12-9
Sunday 12-4

Kevin vs. Janet: The Battle of the Dishes!

Each Friday, watch as Kevin and Janet go head-to-head in the kitchen, each whipping up a special dish to win your hearts and taste buds. Who will reign supreme? You be the judge!

~

Sundays

Sunday Roast featuring sirloin of beef and large selection of fresh vegetables

~

Monthly Pub Quiz Night!

Join us for a night of trivia and fun, all in support of Air Ambulance. Test your knowledge and help a great cause at the same time!

1st Saturday of the month from 7.30pm

VILLAGE MARKET 2026 TOPPEFIELD



VILLAGE HALL

Church Lane - Toppesfield - CO9 4DR

10.30am - 12.30pm

FIRST SATURDAY OF EVERY MONTH

upcoming dates 2026

7th February - 7th March - 4th April

2nd May - 4th July - 1st August

Finest Local Produce

Arts & Crafts - Home Design - Pork Butcher

Cakes & Pastries - Cards & More.....

Refreshments & Bacon Rolls

Toppesfield Community Shop



VOLUNTEERS

NEEDED.

DOCTORS CAR SERVICE

Take local residents to their doctor's surgery for appointments and bring them home

Contact Paula to Volunteer

Paula Edwards-Holmes

07845 596092

pjedwardsholmes@gmail.com





TOPPESFIELD

Community Shop

***OFF LICENCE & GROCERIES**

BREAD - MILK - FRUIT & VEG - FROZEN FOODS

ICE CREAMS - BEERS - WINES - SPIRITS

STATIONERY - CARDS - STAMPS

COAL - PET FOOD - PLANTS

NEWSPAPERS - MAGAZINES - CIGARETTES



Garden Cafe

*no alcohol is to be consumed on the premises

OPENING TIMES

Monday	8.30am - 4.00pm
Tuesday	8.30am - 4.00pm
Wednesday	8.30am - 1.30pm
Thursday	8.30am - 4.00pm
Friday	8.30am - 4.00pm
Saturday	10.00am - 12.30pm



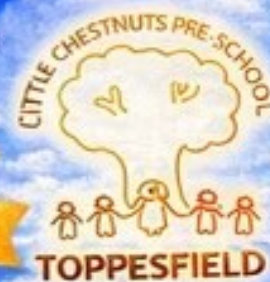
WEDNESDAY 10am - 1pm

FUNDRAISER

FOR LITTLE CHESTNUTS PRE-SCHOOL &
ESSEX AIR AMBULANCE

Join us at Toppesfield Village Hall

6TH JUNE 2026 - FROM 1:30PM



Glow Up
EVENTS

Come along for a fun-filled afternoon
with something for the whole family!



It's a great chance to support two wonderful
causes, meet new people, and enjoy a relaxed
afternoon together.



Essex & Herts
Air Ambulance



Little Chestnuts
Pre-School
TOPPEFIELD

