



May 2021
Edition 181



USEFUL NUMBERS

Braintree District Council	01376 552525
Colchester Hospital	01206 744491
Doctors Car Service	07845 596092
Freshwell Health Centre	01371 810328
Hedingham Medical Centre:	
Castle Hedingham	01787 461465
Sible Hedingham	01787 460612
Kaaren Berry, Parish Clerk	07341264219
Little Chestnuts Preschool	079018 80914
Little Hedgehogs Toddlers	01440 785778
Pumphouse Brewery	07780 702293
Rev. Liz Paxton	01787 277270
St Margaret's School	01787 237354
The Green Man Public House	01787 237418
Toppesfield Community Shop	01787 236003
Toppesfield Village Hall Booking	
Secretary—Daphne Jude	01440 788270

TOPPESFEILD COMMUNITY SHOP

Church Lane, Toppesfield. Tel: 01787 236003

Fresh Fruit & Vegetables, Milk, Newspapers, Confectionery, Pet Food, Dairy Products, Meat & Poultry, Coal and Kindling, Cards, Stationery and lots more!

Monday—Friday

8.30 am— 3.30pm

Saturday—10.00 am—12.30pm

TOPPESFEILD POST OFFICE

Church Lane, Toppesfield

Wednesday— 10.00 am—1pm

Services include: Special Delivery, Mobile Top Up, Insurance Services, Household payments, Travel Money, Moneygrams, Savings Accounts plus more!

Toppesfield Parish Council

Councillors — Alan Collard, Amanda Smith, Andrea Chinery, Boyd Page, Gemma Mackman, Chris Neale and Daisy Watson.

Parish Clerk — Kaaren Berry

Parish Council Meetings are normally held on the first Thursday of every month in the village hall. During lockdown the parish council are meeting virtually. You are welcome to attend the Open

Toppesfield & Gainsford End Parish Newsletter

Published by Toppesfield Parish Council

Editor: clerk.toppesfieldparishcouncil@gmail.com

Please see our online resources to find out what is happening

Facebook Pages :-

Toppesfield & Gainsford End Community

Toppesfield Village Hall

Toppesfield Village Stores

The Green Man, Toppesfield

Pumphouse Community Brewery

Toppesfield and Gainsford End Neighbourhood and Development Plan

Twitter & Instagram— Toppesfield & Gainsford End Community

Website—<https://e-voice.org.uk/toppesfield-parish-council/>



From the Parish Council



Welcome to issue no.181 of the Toppesfield & Gainsford End Newsletter

'Rough winds do shake the darling buds of May', wrote Shakespeare in his sonnet no.18.
Too true, Will, too true!

We're putting together this edition of the Newsletter with weather warnings in place and strong winds blowing through the village.

This, after what seems like a never-ending run of low temperatures and extremely dry weather. It barely seems springlike at the moment but, the photo of pear blossom on the front cover shows us that the seasons progress despite the cold.

But just as warmer weather will arrive (how long before we are complaining that it's too warm?), we are also now seeing signs that our lives are promising to see a return to some stability.

In the village, we can now look forward to the welcome return of our Church Fete, scheduled for Saturday 3rd July, a 'Welcome Coffee Morning' to enable all those who have moved into the village over the past 15 months to get to know people and a Village Saturday market on 19th June at the Village Hall. You will find all the details in this Newsletter.

We have all missed these types of events and it is great to see them returning. Let's give them all the support we can; it's only when we can't hold them that we realise how important they are to the village.

Likewise, by the time of the next Newsletter in early July, the pub will have reopened fully without any covid restrictions in place – though by then we might be wanting to sit outside for much of the time!

Since the last edition in March, we have seen progress around the village in respect of the start of improvements to the car park in Park Lane, the replacement of the village signs on the Yeldham and Stambourne roads and we were able to undertake a successful litter-pick in early April; we didn't count how many bags we collected but you can see a photo of the haul later in the Newsletter.

For the parish council, things are slated to return to 'normal'; it seems that meetings after 7th May will have to be held in person, as the legal dispensation allowing virtual meetings comes to an end. No more zoom meetings. No more telling people to unmute themselves. No more frozen screens or connections failing. Once again, we will be able to discuss things properly around the table and we will welcome attendance for the public session before each meeting.

There are several things that the parish council intends to push forward with over the coming year and we will be sharing these in the coming months.

If there is anything which you would like to raise with the parish council or if you have any suggestions as to how we can all help improve our village, please let us know.

Finally, it is spring, we are coming out of lockdown and as a further sign of rebirth and good news, we are pleased to note what we think is the first new arrival in the village since the lockdowns started. Young baby Adelaide was born to Chloé and Dan, (newly arrived in The Causeway just a couple of months ago), at the end of April. Congratulations to them all.

Our next Newsletter will be delivered in early July so please send any articles or photos to Kaaren by 20 June.

New village gate signs

A big thank you to Rob Stafford-Baker who made and organised the erection of the new village signs on Stambourne Road and Great Yeldham Road. He was ably assisted by Simon Hughes, George Young and Boyd Page.

By fabricating the new signs and erecting them ourselves, we saved the village over a thousand pounds.

The signs haven't been painted white as yet to allow the wood to dry. But some people have commented that the unpainted natural wood looks good and perhaps shouldn't be painted.

Let us know what you think.



Park Lane parish car park

Can you spot the difference?

Before.....



..... and after



Yes, the parish council is pleased to report that the unsightly Mercedes which had been left to be embraced by the brambles in the car park since July 2018 (apart from a brief interlude during which it mysteriously disappeared before being returned), has now been moved by its owner.

It has unfortunately taken a lot of time to persuade the owner to remove the car and has cost the Parish Council a considerable amount of money in time and legal fees.

To prevent any further dumping of vehicles, the rear of the car park has now been blocked off using wooden posts with reflectors, so they will be visible day and night. The car park has also been tidied up, hedges and grass cut, and the edges cleared

We had noticed in the past that because of its square shape owners tended to park their vehicles at the front to avoid being blocked in. The new layout is intended to cater for 4 or 5 cars (depending on how well they are parked!), so no spaces have been lost.

We hope you agree that this is a welcome improvement for all residents of Park Lane.

Please do park carefully to maximise the use of this space.

A big 'thank you' to Councillor Boyd Page for all the time and work he has spent on getting this sorted out.



St. Margaret's C of E Primary School

It has filled our hearts with joy to hear the wonderful sound of all our children back in school recently. Schools are very strange and empty places without them!

Since returning to onsite learning, the children have enjoyed getting to grips with the new chromebooks we have invested in. The children we are educating will be entering into careers in a technological world and so it is essential we equip our pupils with the necessary skills to do so. We have also been fortunate enough to have received donations from both Toppesfield and Stambourne Parish Councils alongside FOSMs to support our pupils with technology for remote education during the recent lockdown. These donations enabled us to purchase a further 11 laptops for which we are very grateful. In addition, an anonymous donation has allowed us to purchase some up-to-date iPads as the ones we had in school had become obsolete. We are extremely grateful for all the donations which have come in from so many places.

As well as the improvement in technology, we are looking to improve the garden area at the front of the school and turn it into a sensory and reflection garden as well as creating a nurture room in the school. Both of these facilities will support the pupils with their emotional resilience. This is always a critical part of the work we do in school, but this is of even greater significance as we recover from the pandemic.

As always, our children and families continue to be a delight to work with. We look forward to updating you again in the next parish magazine.



Coffee, Cake and Company

26 June – 10-12

Please join us for a cuppa and a piece of cake on Saturday 26 June 10-12 in Toppesfield Village Hall. The event is to welcome new faces to the village and an opportunity for the whole community to catch up after this difficult year. Everyone is welcome.



[This Photo](#) by Unknown

If anyone would like to wish to volunteer to either make cakes or help on the day please let Lynn Collard know at lynncollard@yahoo.co.uk or 07775512242.

Restrictions should (everything crossed) be lifted by the date of the event but please also RSVP to Lynn if you are planning to attend so that we can ensure we have enough chairs and more importantly enough cake!

If they wish, attendees will have the opportunity to donate towards a local good cause. Further details to follow.

Hi All



After a long time, we are now open, only at the weekends for now but it's a start.

We would like to say a big thank you to the village for the support you have given us over the past year and for the help from TCP. Also a big thank you to the donors of our new windows in the toilets.

As you may be aware the week beginning 17th May the pub can welcome you inside the premises. We will then open 4 days a week, Thursday to Sunday. Unfortunately we will not be doing our lunch club on Thursdays until we can open fully. We will be opening on Thursday 20th, at 5pm.

On entering the pub you must wear a mask and observe the rules which are, sign in or scan if you have a smart phone, for all adults, rule of six applies and it will be table service only.

This will (hopefully) only be for 4 or 5 weeks then if all conditions are met, we can open 6 day a week without any restrictions as of 21st June. Then it will be business as usual.

Hopefully we will see you soon in the pub enjoying a drink and some food.

Thank you

Paul and David



TOPPESFIELD

Community Shop

Hi Everyone

Things have certainly eased a little since the last newsletter and I suspect that most people have had the vaccination. This is great news as we can begin to pick up the threads of a more normal existence.

Since 12th April we have extended the shop hours from 8.30 am to 3.30 pm week-days and customers are welcome to come into the shop hand sanitised and masked and just one customer in the shop at a time.

Extending the shop hours and the fact that several regular volunteers have returned to work means that that we have 7 more shifts a week to cover. Some of the original volunteers are now available but we really do need more volunteers and customers. During the height of covid the shop provided a life line to the village but now takings have dropped to more or less where they were before covid. This is both worrying and very disappointing and all I can say is please **Use the shop or you will lose it.**

Just a reminder goods from Priors Hall and magazines and newspapers can be ordered and of course we have a wide stock of general groceries, frozen foods and home made pies, pastries and cakes by Ozes. If you need a delivery we can of course do that.

Why not meet up for a coffee and cake and relax in our newly revamped garden. On the subject of the garden, once the risk of night frosts has passed, I will be getting some more plants so keep an eye out at the shop.

As long as the covid regulations allow we plan to restart the monthly markets the first one we hope will be on 19th June from 10.30 am to 12.30 pm in Toppesfield Village Hall. Again look out for posters and do support the market and local producers..... no air miles!

Thank you all for being so generous with donations to the food bank. The goods they want change from time to time so keep an eye on the shopping list.

I look forward to seeing you at the shop as a customer, new volunteer or just enjoying a coffee in the garden.

Ann Read

Village Market

Saturday 19th June to be held in Toppesfield Village Hall from 10.30 am — 12.30pm

Please pop along to see what is on offer from fresh meat, jams, pastries and cakes to handmade crafts, jewellery and more.

Covid regulations will be adhered to with track and trace, a one-way system, masks are to be worn and social distancing.

News from the Footpaths



Hi Everyone

I hope you are all well and expect a lot of you will have had THE JAB.

In the last newsletter mud and snow dominated the scene. Now the ground is so dry and hard that there are cracks in the ground reminiscent of August not April but really warm days have been scarce. Still, as I have mentioned before, nature just keeps on going and the footpaths are now carpets of flowers such as cowslips, violets, red dead nettle, dandelions, stitchwort, celandines and many more waiting in the wings. We will just have to be patient for a few more weeks for the blue bells. The blackthorn blossom is just beginning to go over but has been almost like foam in the hedgerows and the pussy willow, laden with pollen is always a joyful sight.

Of course now the birds are very busy building their nests and laying eggs so activity on my bird feeders is pretty frantic as one parent feeds the other as well as the growing fledglings. It is at this time of the year that I think I spend more money on bird seed than I do on my own food!

Two footpaths of concern are the foot path that goes passed the Carp Lakes at Great Yeldham and the bridge that goes over the brook at the back of Ollivers. I am in contact with Highways about both of these issues . At the Carp Lakes, the new owner has moved the footpath and has very aggressive dogs that race up and down the fence and are quite intimidating. Highways and Braintree council are aware of this problem. The bridge over the brook at the back of Ollivers, having been repaired about eighteen months ago, does not seem to be attached securely to the bank and so when flooding occurs the bridge actually moves. Again highways are aware and will do the necessary work to make the bridge secure. Do take care if you are walking that way.

Keep walking and enjoying our beautiful parish.

Ann Read



Pussy Willow

Red Dead
Nettle



Blackthorn



St Margaret of Antioch – Toppesfield

A short introduction of myself to all of you who live in or around Toppesfield.

My name is Caroline Brown, and in September I will be ordained a deacon and will be serving my curacy in The Hedinghams and Upper Colne Benefice.

The main allocation of my time will be at St Margaret's, Toppesfield.

I will be a locally deployed self-supporting minister (LDSSM) and will be for now working 2 days in the week and on 2 Sundays a month.

I have a lot of previous experience in Church work and in the community particularly with families and children and starting things from afresh.

My first aim is to get a Family / Carer Baby and Toddler Group started, and intend to arrange some picnics in the playground during the summer holidays to get to know you all more. More on that in the next edition.

My head is full of ideas but perhaps you have some of your own?

Is there a project or group that you think would help the community of Toppesfield?

I am really excited to be serving in the village and look forward to getting to know you all.

And please get in touch if you need any help, want a chat, or have an idea.

Caroline Brown

revcarolinebrown@gmail.com.



[This Photo](#) by Unknown Author is licensed under [CC BY-NC](#)

CHURCH FETE

TO BE HELD AT:

St Margaret of Antioch - Toppesfield

Saturday 3rd July

2pm

**Teas, ice creams, bric-a-brac, plants and bottle stall, tombola,
games and prize draw.**

WE WOULD BE VERY GRATEFUL FOR YOUR HELP PLEASE WITH THE FOLLOWING:

PRIZES FOR THE RAFFLE

CAKES FOR THE CAKE STALL

GOOD QUALITY BRIC-A-BRAC

HELPERS FOR THE REFRESHMENTS

SCONES TO BE MADE FOR THE TEA / REFRESHMENTS.

AND ANY WILLING VOLUNTEERS TO HELP ON THE DAY.

PLEASE CONTACT: revcarolinebrown@gmail.com.

Ecology and Environment group

This year, why not try...

Wildlife friendly gardening

It might seem to many people that there is no need for us, who live in beautiful countryside, to do anything to help wildlife. In fact, we need to support the creatures that share it with us more than ever. Climate change, the loss of farmland hedges and meadows and trees (such as ash trees) have all contributed towards the decline in some birds and invertebrates and insects.

However, all is not doom and gloom!

By making some changes in the way we garden, we can collectively make a huge and positive difference. According to a recent report from the Royal Horticultural Society, since 2015, plant cover in gardens has increased by approximately 40 square miles, and 60% of gardens have a least one tree. The number of front gardens with no plants has halved - however, there is still work to be done, because around a third of front gardens still have less than 25% plant cover, and 2.5 million have no greenery at all.

So.... what can be done, without a total garden make-over?

The answer is - LOTS!!

Just look at your garden: could you put some pots of nectar-rich flowers on paving?

It's easy to identify these- they have this bee symbol on packets or pots.



Or include some of these in your flower bed, which are all easy to grow:

Cosmos, Perennial wallflowers, Alyssum, Michaelmas daisies, or verbenas. Butterflies love purple flowers!

A great way to support wildlife and enjoy seeing its beauty also gives you more time to do so..... just leave some of your lawn uncut or cut it less and higher. Cutting once a month to 1 or 2 inches will benefit the “mower-ducking” short-stemmed flowers, encouraging them to keep flowering. If you can leave some areas to grow taller, different wildflowers can grow, giving a more varied habitat.

You will be amazed at how many wildflowers will pop up - daisies, self-heal, buttercups, violets, cowslips, clover, to name but a few. These will attract bees, butterflies, hedgehogs (which eat slugs, so you won't need slug pellets) and a host of other little creatures.

Our neighbour did this, and her little boy came rushing in to excitedly report “the first bee of the season!”

How lovely for children to be part of rescuing bees and other vital insects from the worrying decline in numbers of recent years.



Here's the link to a fascinating article from “Plantlife” which gives more information (Thanks to Rosie Daines for sending it) It's called “ No Mow May” which gives you a clue to its content.

<https://www.plantlife.org.uk/uk/about-us/news/no-mow-may-how-to-get-ten-times-more-bees-on-your-lockdown-lawn>

Do give these ideas a try, and please let us know what happens, or send photos to the newsletter. It will be great to see what differences we can make together.

Lynn Collard

Toppesfield Parish Neighbourhood Plan

Unfortunately we have not been able to progress matters since the last Newsletter due to the ongoing restrictions on public gatherings. The formulation of a Neighbourhood Plan is very much a "face to face" exercise and without being able to speak directly to you, our community, things have slowed somewhat. However, there now appears to be light at the end of the Covid tunnel, and to that end, the Parish Council has tentatively pencilled in the date of Saturday 31st July for a "drop-in" day at the Village Hall. This will be along the lines of the original Launch Event that had to be cancelled in May last year. Naturally this will be very dependent on ongoing Government restrictions, and full details will be widely circulated nearer the time once the situation becomes clearer.

In advance of the "drop-in" day we would dearly love to receive your thoughts, and pictures, so that we get a full range of ideas as to what you consider to be good, and bad, architectural features found in the parish. So far we have had few responses, so why not have a think and whilst out walking, jot down some thoughts or take some pictures to show us what you really appreciate about our built environment – all whilst staying Covid-safe of course!

Please forward your thoughts to us via email at ToppesfieldNP@gmail.com, or via our FaceBook page, which can be found at <https://www.facebook.com/tgenp>.

There is also our Instagram page showing the views some people have already submitted. Here is a link to explain how to create an account:

<https://help.instagram.com/155940534568753>

Once you have an account if you search for "toppesfieldviews", you should then be able to click "follow" and then be able to see the page.

If you have any queries, thoughts or opinions, do please feel to contact us at: ToppesfieldNP@gmail.com.

In the meantime, please continue to stay safe, and look out for neighbours who may be feeling isolated or have needs that you feel you can help with – obviously with social distancing in mind!

Finally, on a more personal note, I have had to stand-down from the committee due to pressures of work, but the good news is that a number of new members have joined to offer their help and expertise, so once we are allowed to fully interact again, the committee will be even stronger than before, and we can all look forward to re-energising this important initiative!

TOPPESFIELD ALLOTMENTS

Through the lockdown of last year and through to spring so far, we allotmenters have had a lifeline and refuge, which has been a great benefit to us all as well as the for exercise and peacefulness, not to mention mental health, not just for the allotment holders but for all the parishioners that take exercise in the facility with daily walks with their dogs, it truly is a big asset for the Toppesfield community.

Produce aplenty was grown last season, so we are hoping for a cornucopia of produce this year.

We started with a flourish of daffodils in March this year with possibly the best show ever, thanks to the Moodys for their donation of bulbs some 9 years ago.

There has been a donation from Richard van Dulken BDC for works to be carried out for a shelter to dive under when we have the inevitable thunderstorms and autumn inclement weather, we are actively looking for further funding as we will need to have a fund of around £600 to complete the project so any offers of funding will be greatly accepted.

Last autumn a group of allotmenters made a start on clearing the Church Graveyard, which resulted in spring bulbs poking their heads through the weed and bramble-free site. A big improvement is visible to all that walk the site and visitors to the church and grounds.

There are further working parties going ahead this month. Any other volunteers can contact me or any other committee member

Thanks to Rob Stafford-Baker, Rae & Ann Syder, Darren, Mick Francis, Dave Chapman, Richard and Julia Evers, Andy Daines, and anyone else that I have forgotten.

The allotments remain full - long may it last with a waiting list. If you haven't visited the site recently please do so.

Thanks go to TPC for grant support for water that goes a long way to making a sustainable allotment. The water system was given a ten-year check by AWA which passed with, only one small fault which has now been rectified (air gap to stop back siphoning)

One final thank you to my wife Clare who manages the accounts and admin without any grumbles and has done so for the last 10 years.

Tommo's Tips

Sowing and planting

Plant in pots or trays under glass, Dwarf and climbing French beans, Runner beans, Sweetcorn, outdoor Cucumbers, Courgettes, Pumpkins, Squashes, outdoor Cucumbers – all of which can be planted out in the month of May. Savoy cabbage, winter cabbage, endive, kale and sprouting broccoli can all be sown in the open ground now, ready to be planted out next month.

Continue making direct successional sowings in the soil of lettuce, radish, Spinach, Turnips (switch to Kohl Rabi when the weather becomes hot) beetroot for summer use, and also maincrop beetroot to put into store at the end of summer. While the Leeks, Brussels Sprouts and French Beans are sown last month under glass, can now be planted out.

This is also your last opportunity to sow Peas and Parsnips this year.

Thin out whilst still very small, the seedlings of Beetroot, Carrots, Lettuce, Onions, Parsnips, Turnips, always water along the row to settle the disturbed seedlings back in, once the job is completed.

Put up poles for runner and climbing French beans. Support peas and broad beans before they become too tall. Start to earth up Potatoes especially if a frost is a forecast.

Keep hoeing between crops to control weeds and also create a "dust mulch" to conserve precious soil moisture. Try to water in the cool of the evening if possible using a watering can to direct the water around the root area of the crops.

If you can get it, put some straw underneath the developing Strawberry fruits to keep them off the soil and try to avoid watering overhead to reduce any problems with mildew.

Most of all enjoy your time at Toppesfield Allotments and keep your site tidy.

Not like mine, which Clare says is a mess.

If you take your dog for a walk on the site please use the Dog Poo bin.

Kind Regards to all

Paul Thompson Chair

Toppesfield & Gainsford End litter-pick

The annual (except for 2020!) litter pick took place on Saturday 3rd April and we saw a record turnout of 28 people.

They all went off with their empty litter bags, gloves and litter pickers and returned with.....



... a mountain of rubbish!

The rubbish collected was the usual stuff – fast food boxes, drink cartons, a wide range of empty (usually low quality) beer, wine and spirit bottles but also a plastic garden chair, a vehicle exhaust, a leaking container of red diesel and a computer hard drive.

Thanks to all the 28 who helped clean up the mess left by others.



REPORT TO ANNUAL PARISH MEETING

TOPPESFIELD AND GAINSFORD END, 2021

The key influences and events over the last year were:

- The COVID-19 pandemic caused a protracted period of uncertainty.
- Sales of draught beer to pubs dropped to zero as a result of lock down.
- We were forced to focus on finding new outlets for bottled beer.
- In an attempt to increase revenue, we also began to sell Toppesfield wine and snacks from the brewery shop, and introduced a loyalty card scheme.
- We are currently in the process of re-branding and have a new transactional website under construction, funded by Braintree District Council (BDC).
- Aaron and Kaaren were placed on flexible furlough and in October, we unfortunately had to lay off the assistant brewer Bill Holland.
- We survived through the good fortune of grants, including from the Prince's Countryside Fund, the Government's COVID grant scheme, and the Social Fund.

At the beginning of 2021 our financial situation was precarious. The effect of successive lock-downs was to completely undermine our previous focus on sales of draught beer to pubs, and whilst they were never the most cost effective outlet, they had been our main source of income. We placed Aaron and Kaaren on flexible furlough, with an inevitable reduction in our capacity to produce beer. However, this was more closely in line with sales, as we were forced to change our focus to selling bottled and draught beer from the brewery shop, and such sales have steadily increased recently. Tina Mason and Aaron Osborne have applied for personal licences so that they can sell at markets etc.

We are developing sales to retail outlets and have a good relationship with Poplar Nurseries in Marks Tey. We have a group of dedicated fans in High Easter who have been placing regular orders. In the world of on-line retail, our bottled beer is available for sale on Amazon, on the CAMRA 'Brew2you' on-line shop, and on 'ClickitLocal', a sales portal introduced to us by BDC. We also have a dedicated following on facebook.

Crucial grant funding was received from the Prince's Countryside Fund, The Hopkins Plunkett Communities Scheme, who awarded us a grant for new bottling equipment, and SEBCOR, who are covering the cost of our re-branding (see below). We are also benefitting from the Government sponsored 'Additional Restrictions Grant' through Braintree District Council, and we received a small grant from the Village Shop.

For the future, we aim to raise and update our profile through re-branding and a new transactional website. Both are currently under development and should be available to roll out by the end of May. Our reaction to initial viewings of both as they are developed, are that they appear very professional, modern, vibrant and eye catching.

Finally, we urge all parishioners to support the brewery more actively; the village will benefit from a successful brewery.



Future Plans

Our immediate objective must be to restore our financial position to match or exceed the strong position it was in before the pandemic. As we look forward through 2021 into 2022, we need to continue to raise our social and market profile, and to further develop bottle sales, whilst continuing to satisfy the need for draught beer of the pubs that are our traditional bedrock, especially The Green Man. This will necessitate a review of our pricing structure later in 2021.

As we achieve this objective, we should be able to increase productivity by re-employing a brewing assistant.

Environmental Impact and Climate Change

One ongoing problem that impacts on the immediate environment around the brewery is the disposal of brewing waste; we need a reliable and long term solution to this problem.

The means of delivery of draught beer kegs to pubs remains problematic, although we have had generous offers of help in this respect from shareholders. The ultimate solution would be for the brewery to own a vehicle. Ideally this would be an electric vehicle with charging point, to minimise environmental impact.

As regards amelioration of the effects of climate change, we will keep the green credentials of our electricity supplier under review. On the broader front, the opposed roof of the middle section of the barn faces South (incidentally, so does the front of the Green Man) and would be ideal for the installation of solar panels to generate electricity, and solar heat exchangers to supplement water heating. During sunny weather such as recently, the latter could provide all the hot water necessary for one days brewing, but would necessitate installation of a circulatory system and a sufficiently large water tank. The roofs of the larger end section of the barn could also accommodate solar panels. Advice would be needed from a structural engineer as to whether or not the roofs are strong enough to support these features. However, both systems, once installed, would provide strong financial benefits to the brewery and indirectly to the community.

The third element of a green energy system for the brewery, or any other community asset, would be an air or ground source heat pump. These can provide for a complete heating or cooling system. However, they are expensive to install, to run and to maintain.

Trevor Wyeth, Chair

Pumphouse Community Brewery Limited

29th April 2021

Now open four days a week

Pumphouse Brewery, next to the Green Man, is now open for takeaway sales:

Monday, Wednesday and Friday 11am-4pm and Saturday 10am-1pm.

We are pleased to take card payments, cash or bank transfers.

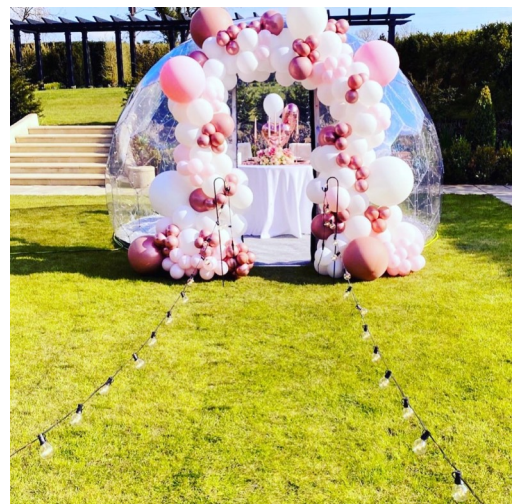
All hail to the ale!

It's so good to be open to guests again at Toppesfield Vineyard. Restrictions were lifted on April 12th and we had visitors booked in from Tuesday 13th. We have already had two honeymoon couples, the first couple from Rayleigh got married at Gosfield Hall with the maximum of 15 guests. She was still wearing her long wedding dress and looked absolutely lovely. They were really lucky with the weather and took a few local walks, including a visit to Toppesfield stores to buy food for their evening BBQ.

The second honeymoon couple got married in Bristol (also with 15 guests) and arrived the following day for 3 nights. The hot tub (thanks Sally & Frazer!!!) is proving very popular with guests, particularly at night time when they can stargaze with a glass of Toppesfield Fizz in their hands.



Another couple were celebrating their 6th anniversary of being together. Her boyfriend surprised her (and us....) with an 'igloo experience'. A company from Devon drove 5 hours to Toppesfield, spent 5 hours erecting the Perspex igloo and preparing the setting for a romantic dinner for two on the first night; they came back on the second day to reconfigure the igloo for a 'romantic movie night under the stars'. WOW! The igloo company, Every Last Detail, has lots of Instagram followers as they did a number of styled events for Love Island





We have more honeymooners booked in as well as a couple of proposal weekends – we are keeping our fingers crossed that they say YES!

Finally, we were delighted to be approached by the Sunday Times to be featured in their Travel Section in mid April. This has led to a number of new enquiries already.



We have received the most fantastic reviews on Airbnb by all of our guests to date. This is in large part due to the high standards implemented by Susie Seager, Sharon Benfield, Karen Beavis and Julie Clark – we can't thank them enough for their hard work and their focus on getting every single detail JUST PERFECT!

Jane and Peter Moore

Dear friends and neighbours in Toppesfield & Gainsford End.

I had the most worrying weekend when my gorgeous puppy Ruby, that I had bred, went missing on Saturday morning the 17th April. I went on to social media and tried to spread the word about her disappearance – my wonderful friends and also people that I didn't know all kindly shared my post. After 5 hours I had a call of a sighting in Gainsford End – my eldest son and I rushed out in the car to search. We then knocked on every door that we could giving out my contact details as well as Ruby's details – can I please THANK EVERYONE for taking a "mad and desperate woman" seriously ! You were all sooo kind.

We had another sighting from a game-keeper from Great Yeldham who was 99% sure he had seen her on the Stambourne Road – again I headed out to have a proper look – the gamekeeper very kindly came over on a quad bike to help us.

To cut a long story short – The Green Man kindly gave out missing dog posters and so many people from our local area and were SO KIND and supportive I am overwhelmed by the love and help that has been – lovely people out in cars / walks and runs and all reporting back to me – finally I had a call on Sunday from a Memories delivery driver – who was sure he had seen her – Burchell Family mobilised and headed off to location – 15 minutes later Ruby came running from a field.

I honestly want to thank the whole area of the support and kindness you have shown to our family and Ruby... I am a bit overwhelmed with the efforts taken for Ruby and me.

Thank You all so very much.

Caroline, Jonathan, Edgar, Humphrey & Ruby xxx



Beautiful Reggie is looking for a forever home to call his own. He isn't coping in kennels so is desperately looking to find his perfect match soon. Reggie absolutely adores playing, and will happily engage in games with you. He has previously lived with children around 12 years of age and we feel this would be a suitable match for him as he can be very lively!

Reggie has an extremely high chase drive when it comes to cats and smalls animals. Due to this, he has to be walked wearing a greyhound muzzle to ensure the safety of other animals when out and about on walks! Due to Reggie's high chase drive, he has also been known to jump 6ft fencing! He previously had 9ft fencing in the home which was heightened with the use of trellis, this would have to be considered by potential adopters. Reggie is very affectionate and adores human interaction he cannot be left for long periods of time. He would love it if someone was around all day!

Reggie does prefer his own space when it comes to greeting other dogs. He is nervous and can sometimes react if they get too close, however he will walk past them calmly given enough space.

If you think you can offer Reggie a home then please fill out an application form online at www.danaheranimalhome.org.uk



A brief account from an American visitor to Toppesfield in 1886. See how many children the school could accommodate then; you have to wonder how did they could all fit in!

'From Toppesfield, England.

At Yeldham the only cab we could find was a little dog-cart with a Welch pony that hardly came up to the shafts. However, this was all that was necessary and the owner told us he would take us for two shillings* if we 'didn't that much would harm us'. He proved himself capable of giving considerable information about the church and chapels (as Congregational and Methodist churches are called in England) as his father had been Parish Clerk at Yeldham for a good many years, but when I asked him the origin of the name Toppesfield his answer was: 'Well, that's a question I could hardly answer, Sir. They must-a-caught it as it came along. Came by a whirlwind perhaps'. Mr lane, the genial teacher of the parish that the only reason he could find was from the fact of its being the topmost village in the shire.

We had been informed that some years before, a gentleman from Topsfield, America, had come to see the graves of his ancestors; the woman who told us could not remember the name, and so we mentioned over the names of Cleveland, Peabody, Bradstreet, thinking it might be some of these, but none of them seemed familiar. Finally the mother came in and said: 'Why, it was the one who had six wives, Joseph Smith** was the name.

The present school was built in 1856 by the then Rector, Rev. Mr Gooch. It has accommodation for two hundred children and has one hundred and forty names on the register.

Rev. Lyndon S. Crawford, Salem Gazette, November 25. 1886'

* Two shillings (2/-) is equivalent to 10p. In today's money; the cost for the cab ride from Yeldham (presumably the railway station), in today's money would have been about £13.

** Joseph Smith, the Mormon prophet, was of Topsfield ancestry. The Smith referred to may have been a descendant. The Mormon church only renounce polygamy in 1890, four years after this article was written.



Are you experiencing the Post High - Stress Slump?



As the threat of Covid-reduces and risk lowers, many people feel they should be full of energy and joy as the country opens up again. But you may not feel that way. There are many examples of exhausted and emotional people saying they don't understand why they are feeling this way now after the biggest threat has passed.

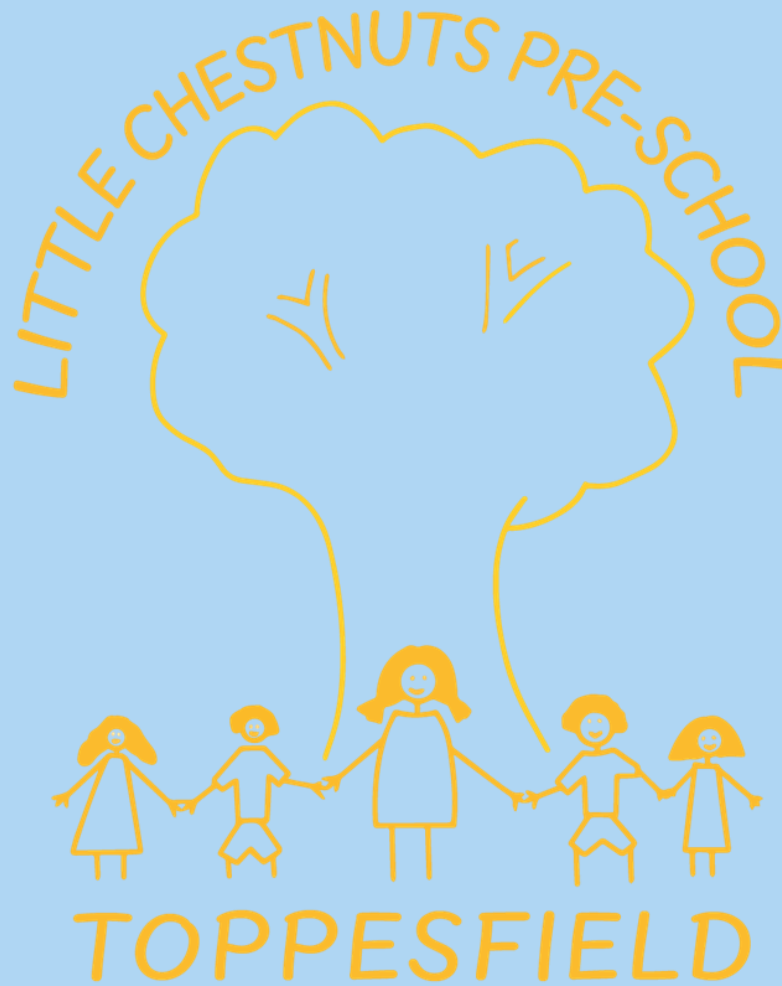
This can be confusing! We should be feeling really well. One possibility is the 'post high- stress slump.' When our brains anticipate threat they prepare by getting our body ready for action..... and this needs lots of energy. Our brain goes "whoa, threat incoming", and sets off a series of chemical reactions, including adrenaline release to prepare us.

If the threat doesn't pass quickly, our body needs to keep its foot on the accelerator to remain on high alert. This needs more chemical reactions, including cortisol release, to keep us alert and ready for action longer-term. Again, more energy is needed and impacts on our body systems, but we may not notice this when in 'survival mode'.

As the threat passes, the body threat response dampens. We relax from high alert mode and that's when we realise that our energy is depleted and we are exhausted. Tie this in with the extra brain space that is freed up once we are out of high threat mode, and as we start to reflect on what the hell happened and we begin to process this leading to states of high, or low, emotion and exhaustion.

So we shouldn't tell ourselves, 'I shouldn't be feeling this way', but just recognise that it may be the result of dealing with long term stress, and all the energy use and impact on your body that entails. You may need time (and friends and family, of course) to process and recover this.

Taken from Dr Emma Hepburn's Instagram page @thepsychologymum.



Open Afternoon

Sunday 13th June 2pm-5pm (appointment only).

Spaces available September 2021, for children aged 2 – 4 years.

Open Monday to Friday term time only.

We accept 2 year, 3 year old and 30 hour funding.

Please visit our website for more information about our setting

www.Littlechestnutspre-school.co.uk

*For more information or to book an appointment please contact Andrea
07901880914*

Email: manager@littlechestnutspre-school.co.uk