



March 2021

Edition 180



USEFUL NUMBERS

Braintree District Council	01376 552525
Colchester Hospital	01206 744491
Doctors Car Service	07845 596092
Freshwell Health Centre	01371 810328
Hedingham Medical Centre:	
Castle Hedingham	01787 461465
Sible Hedingham	01787 460612
Kaaren Berry, Parish Clerk	07341264219
Little Chestnuts Preschool	079018 80914
Little Hedgehogs Toddlers	01440 785778
Pumphouse Brewery	07780 702293
Rev. Liz Paxton	01787 277270
St Margaret's School	01787 237354
The Green Man Public House	01787 237418
Toppesfield Community Shop	01787 236003
Toppesfield Village Hall Booking	
Secretary—Daphne Jude	01440 788270

TOPPESFEILD COMMUNITY SHOP

Church Lane, Toppesfield. Tel: 01787 236003

Fresh Fruit & Vegetables, Milk, Newspapers, Confectionery, Pet Food, Dairy Products, Meat & Poultry, Coal and Kindling, Cards, Stationery and lots more!

Monday—Friday

8.30 am— 1pm

Saturday—10.00 am—12.30pm

TOPPESFEILD POST OFFICE

Church Lane, Toppesfield

Wednesday— 10.00 am—1pm

Services include: Special Delivery, Mobile Top Up, Insurance Services, Household payments, Travel Money, Moneygrams, Savings Accounts plus more!

Toppesfield Parish Council

Councillors — Alan Collard, Amanda Smith, Andrea Chinery, Boyd Page, Gemma Mackman and Chris Neale.

Parish Clerk — Kaaren Berry

Parish Council Meetings are normally held on the first Thursday of every month in the village hall. During lockdown the parish council are meeting virtually. You are welcome to attend the Open

Toppesfield & Gainsford End Parish Newsletter

Published by Toppesfield Parish Council

Editor: clerk.toppesfieldparishcouncil@gmail.com

Please see our online resources to find out what is happening

Facebook Pages :-

Toppesfield & Gainsford end Community

Toppesfield Village Hall

Toppesfield Village Stores

The Green Man, Toppesfield

Pumphouse Community Brewery

Twitter & Instagram— Toppesfield & Gainsford End Community

Website—<https://e-voice.org.uk/toppesfield-parish-council/>



From the Parish Council



It's March; it's Spring; it's 12 months since the first lockdown.

When the March 2020 edition of the Newsletter was being put together, we were all becoming aware of an outbreak of something called coronavirus, which had started some time previously in China and had been detected in Europe. The Newsletter contained articles about future village events and looked forward to a warm and pleasant spring and summer after a distinctly chilly period of winter weather. Little did we think that only a few weeks later we would be thrown into a lockdown which, with a couple of brief interludes, is still with us. And, of course, none of the previewed events came to pass.

We can, however, see a growing amount of light at the end of this tunnel, thanks to the ingenuity and dedication of front-line workers and the skill of vaccine developers, as well as the self-discipline of the majority of the population. No doubt we will start to see some events come to pass as the year progresses.

The village responded to the trials of lockdown by doing what it always does best: working together, supporting each other and adapting to the changes forced on us.

Our community businesses have provided much support and the shop, especially, was a lifeline for so many during the year. Having demonstrated its value for the whole village, let's all make sure we continue to support the shop. It is run largely by volunteers and as a not-for-profit enterprise it is able to put money back into the community. Since it was set up in 2002, the shop has granted many thousands of pounds to a variety of village groups and enterprises. The shop stocks a wide variety of good quality products; if each of us were to spend just £5 or £10 a week there, not only would we maintain a valuable village asset, with its positive effect on house prices, but we would also be creating the opportunity to support other groups financially.

So please use the shop; it really will benefit each and every one of us.

Also, why not think about becoming part of the wonderful group of volunteers or joining the committee.

Of course not everything has stopped during the lockdown. The Newsletter has articles from the Green Man and the Brewery, from the shop, St Margaret's church, the Allotments group and the school, each of which is looking positively ahead.

Our Environment & Ecology Group has been active and has planted 40 trees during the winter months thanks to a number of family 'bubbles'. We would like to see an increase in projects to enhance our environment and reduce our carbon footprint. Do you have any ideas or suggestions to help achieve these aims? If so, please get in touch with Lynn Collard whose contact details are with the article about trees later in the Newsletter or the Clerk or any parish councillor.

Finally, speaking of parish councillors, we are pleased to welcome to the council Gemma Mackman who has been co-opted to fill one of the vacancies we had. Gemma will bring a new perspective to the council and we look forward to working with her. A second new councillor will also be joining once the requisite paperwork is completed.



TOPPESFIELD

Community Shop

Hi Everyone

Have you had..... the jab!

Yes, this is the dominating topic of conversation. So many people in the village have already had the vaccination which is great and I think this does give us hope and a light at the end of the tunnel.

You may recall that at the first lock down the shop was the total mainstay of the village with queues almost back to the pub as it took time for people to get deliveries and click and collect set up from the supermarkets. We are still there and always strive to supply anything our customers want. With the lock down again we have continued to do deliveries and other village support systems have been put back in place.

Unfortunately, the gazebo has not with stood the ravages of Toppesfield weather. A huge thank you to Paul and David Wignall for setting up the original one and to Boyd Page for lending us the one in place at the moment. We are looking into replacing that.

At harvest time, Brian Moody, church warden, asked if the shop could have a box at the shop for donations for the harvest festival to be given to Halstead Food Bank. There was a terrific response and thank you to all who donated. After the Harvest Festival, one of our volunteers suggested that we make this a permanent feature in the shop and again the response continues to be huge. Thank you all for your fantastic generosity to the food bank. This just emphasises what a caring village Toppesfield is, always thinking of other people less fortunate than ourselves. I think the food bank has become even more important during covid as a lot of people have lost their jobs or have been furloughed.

On January 4th we reduced the shop opening hours to 8.30 am –1.00 pm Monday – Friday with Saturday remaining at 10.00 am -12.30 pm. For the moment we will continue with this but will review the opening hours as the situation changes.

Hopefully the weather is going to improve and gardening will be back on the agenda so keep an eye out as I will be getting some plants for sale at the shop.

Take care everyone and stay safe.

Ann Read

Ultra fast fibre

Toppesfield Ultrafast Fibre Broadband Project

Hi, many of you will know me but for the benefit of those who do not, I am Chris Neale. I live in the village with my wife Fran and our son Theo, who attends the village school, St Margaret's. I have been on the Parish Council for 3 years. I am currently the vice Chair. Although I work for BT, in my spare time I have led a project to bring ultrafast broadband to Toppesfield. This project began in 2019. It has been supported by the Parish Council and the village residents. It has been a long process, but the installations began in March 2020. Timing wise, none of us could have predicted a pandemic requiring home schooling and us all working from home. I have received many kind comments on how the timing of the introduction of fibre broadband has enabled many households to complete these tasks. This year has been such a difficult year, for so many, in so many ways. I am humbled by the thanks, but this project has only been a success due to the village as a whole and your support. Toppesfield really has an amazing community. The village needs something, and the residents make it happen!

The project is funded by grants from the UK government and BT. The idea behind the funding is to bring fibre broadband to those who live in rural communities. The funding of the project has been impacted by another provider who brought forward their plans to provide broadband and destroy our roads. Unfortunately, there is now a shortfall in those grants. The project had an estimated cost of £118,000 we are approximately £8000 short. The shortfall has come about due to some residents who initially committed to seeking a voucher moving out of the village.

The work to provide Toppesfield with Ultrafast Fibre Broadband from Openreach is very nearly complete with a few homes left to be connected to the network. This project has allowed Toppesfield residents to access the fastest Broadband speeds currently available in the UK which over the last year has shown how important a fast and stable connection is for those working from home or home schooling.

If you are considering upgrading your current Broadband service to a new Fibre connection or if you have upgraded but did not claim a voucher it is still possible to take advantage of the grants at no cost to yourself. Each voucher can be worth up to £2500 and are used to cover the infrastructure cost of the network upgrade.

The process is extremely easy, just 2 emails to confirm you would like to apply for a voucher and a second to confirm your service is live.

Ultrafast Fibre Broadband is available from BT, Sky, TalkTalk, Vodafone and many others.

More details can be found at www.openreach.com/fibre-broadband/fttp-providers

If you would like to discuss Fibre Broadband options or to apply for a voucher, please contact me by email c_neale@btinternet.com or 07540 533611.



Toppesfield Church Bells

ST. MARGARETS of ANTIOCH, CHURCH LANE,

TOPPESFIELD ESSEX, CO9 4DR

Telephone: 01787 237530 Email: vturner@btinternet.com

We are delighted to say we have just received delivery of our new Bell Ropes.

It has been a slow process, due to Coronavirus holding things up but at last they are here. The next job is getting them fitted into the Bell Tower, which I will not be doing until the weather turns warmer. Mike Brewster, Tower Captain of Yeldham Church will be helping me with this job.

I would like to repeat my thanks to everyone who has kindly donated towards the Bell Ropes and our band of ringers is looking forward to when we can start ringing for the Sunday Services and Practice nights on a Wednesday from 7.30 pm until 9.0 pm.

Vic Turner

(Toppesfield Tower Captain)

Are you fed-up with doing the same old walks? Find new routes for 2021.

Walking in Essex www.walkinginengland.co.uk/essex is the website for you!

With hundreds of walks to download and print, free, it also has books of walks, contact details for all the walking groups in the county and much more. Whether you want to walk on your own or with a group all the information is there in one place.

There is so much walking information on the web but it is difficult to find. Walking in Essex (part of the Walking in England suite of websites – one for each county in England) has brought it together in one place so whether you are walking from home, or away on holiday, you will be able to find a walk suitable for you.

With walks from half a mile to twelve miles plus long, and a note of suitability for push-chairs and wheelchairs, everyone can find a walk to enjoy.

So home or away, check out the websites and get walking!

John Harris

www.walkinginengland.co.uk/essex

email: john@walkinginengland.co.uk



Toppesfield Parish Neighbourhood Plan



It will not come as a surprise that progress on the Neighbourhood Plan has slowed considerably since our last note. We have held Zoom meetings to try to advance things where we can. However, the formulation of a Neighbourhood Plan is very much a “face to face” exercise and without being able to speak directly to you, our community, things have slowed somewhat.

However, we have been very fortunate to obtain the help of a renowned local architect. He has reviewed both the Landscape Character Assessment and the draft Design Code. He was impressed with the professionalism of the documents and has made a number of valid observations that have been sent to the authors for review and revision.

We would dearly love to receive your thoughts, and pictures, so that we get a full range of thoughts and ideas as to what you consider to be good, and bad, architectural features found in the parish. So far we have had few responses, so why not have a think and whilst out walking, jot down some thoughts or take some pictures to show us what you really appreciate about our built environment – all whilst staying Covid-safe of course!.

Please forward your thoughts to us via email at ToppesfieldNP@gmail.com, or via our FaceBook page, which can be found at <https://www.facebook.com/tgenp>.

There is also our Instagram page showing the views some people have already submitted. Here is a link to explain how to create an account:

<https://help.instagram.com/155940534568753>

Once you have an account if you search for “toppesfieldviews”, you should then be able to click “follow” and then be able to see the page.

If you have any queries, thoughts or opinions, do please feel to contact us at:

ToppesfieldNP@gmail.com.

News from the Footpaths



Hi Everyone

I hope you are all well and probably a lot of you have had THE JAB which is great. We have lurched from very mild and muddy to freezing cold, snow and ice and now back to the mud again all of which provides challenges for the walkers. Still I always think that what ever the weather is doing the natural world is mainly unaffected and Spring is coming!

To me the harbingers of Spring are the hazel catkins and the snowdrops. There is a lovely plant of snowdrops down by the river at Cust Hall. Perhaps you are not aware of this but the catkins are the male flowers of the Hazel tree shedding the pollen and if you look carefully on the same branches you might spot what looks like a bud with a tuft of red hairs sticking out. This is the female flower and when pollinated will be where the hazel nuts develop. Amazing. Of course, while being tricky to walk on, the snow does offer delights as well.



Along the Yeldham Road there were beautiful folds of snow where it had drifted in the wind and of course footprints to check out. Who has been walking this way?

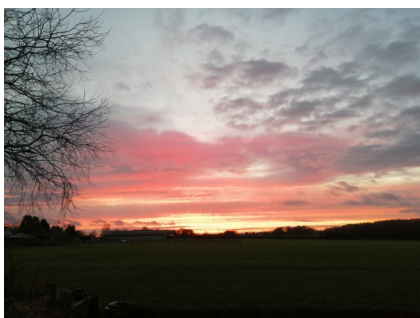


For those of you who venture a bit further afield, you may have encountered problems on the footpath that runs right along the side of the Carp Lakes at Great Yeldham. I have made Highways aware of this problem and also Braintree Council and they are dealing with it so there is little more we can do. Also the bridge over the brook at the back of Ollivers is very unstable. Again I have reported it to highways. Do take care if you are using this bridge.

I am lucky in that my garden faces basically south west so can enjoy amazing sunsets.

So all of you keep walking and looking and enjoying all around you. Spring is on its' way.

Ann Read

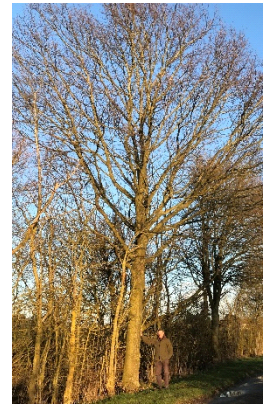


Environment & Ecology Group

Trees, Trees, Trees.....

I'm very pleased to report that following the article in the last Newsletter, 40 trees have now been planted in the parish on land owned by the Mortlock and Cornwell families.

Many thanks are due to all of them, not least Tom Mortlock who delivered mulch to all the planting sites as well as planting a good number of trees himself. We can now all look forward to seeing them grow and flourish. We have planted broadleaf, native species – oak, field maple, hornbeam and hawthorn - for their beauty and their beneficial impact on the environment for many years to come; it's good to know that future generations will benefit from these too. And it is surprising how quickly they can grow. On the right is a photo of a tree that was planted along Harrow Hill in 1987 as a 3 foot high 'whip'. It's now about 50 feet high!



Although some trees had already been planted, due to covid-related delays the main planting day this season was on Saturday 6th February. It was cold and wet at times but were the doughty planters deterred? Never! Just look at the smiles.



Well done to all the families who participated, not all of whom are in the photos.

It is also very important that we care for existing trees. The more mature the trees are, the more carbon they store and they also provide wonderful wildlife sanctuaries as well as helping control flood water.

By the time this article is published, we hope to have done our first check of the trees to make sure they have not been damaged by vehicles or deer. We also aim to clean-cut damage to existing mature trees planted by the parish in previous years in order to prevent disease.



None of the planting this year would have happened without the financial support received from Toppesfield Parish Council, our local Councillor Richard van Dulken's Discretionary Grant Fund, Braintree District Council and from donations by friends and families.



If you are interested in getting involved with the Environment & Ecology Group, please do contact me.

Lynn Collard

01787 237841

Need for Connection During Lockdown

The past 12 months has been a unique time for all of us. Amongst other things, it has highlighted how much we miss meeting people when we are stuck at home and unable to live our 'normal' lives. Although we now are beginning to see the route out of lockdown, we will be living with restrictions for a few months yet.

We asked Dr Victoria Wallis for her thoughts about this need for connection which we all have.

If you bump into someone during your exercise or trip to the shop, have you noticed yourself or them lingering and wanting to talk to for longer than usual? Or is it just me?! A few people have mentioned that they have noticed themselves and others being keen for a chat (so I don't think it is just me). This got me thinking about the psychology behind this need for "connection" with others. Here are some of my thoughts, which I would like to share with you:

From birth we have evolved to connect with other humans. This is a survival mechanism. Compared to other mammals, human babies are much more vulnerable. (This is due to our relatively large brains (and heads), and our relatively small birth canals which are a result of our narrow hips that allow us to stand on two legs. If our hips were wider, to birth babies later in their development, then we wouldn't be able to walk on two legs and would be back on all fours.) Anyway, unlike other mammals, human babies cannot run away from danger shortly after being born, nor can we feed ourselves. Therefore, our survival depends on our ability to connect with others through crying, cooing, smiling, and generally looking cute! To connect with others is therefore hardwired into us from birth.

It is also useful to connect with others throughout our lives. During stressful situations, some believe that a human's first instinct is to look to others to see their response (Stephen Porge's Polyvagal Theory, for those who would like to find out more). This helps us know how to react too. An example of this is when a fire alarm goes off in a public place. People always seem to look around for other people's reactions before deciding whether they need to panic or not! During the stress of COVID, it makes sense that we would want to connect with others more too.

Furthermore, the touch of others – a pat on the back, ruffle of the hair, an embrace, a hand on your arm – all act to calm the nervous system and release oxytocin (the love and bonding hormone). Actually, hugging and stroking yourself works too but it seems to feel better coming from others! Again, it makes sense that we would physically want to connect with each other more now, as touch is calming and soothing to us.



Then there are sayings in our culture like “a problem shared, is a problem halved”. Often just saying things out loud to someone, having them listen and understand, is enough to feel better. Even if there is no solution to the problem. The power of knowing other people feeling similar to you can be strangely comforting. You don’t want them to be hurting, but it feels better not to be alone in feeling a certain way.

It is the simple things about connecting with others, like someone making you smile or laugh, or just noticing you are alive, that leaves us feeling better.

So, if you are craving connection with others right now, it is not surprising given how important connection with others is for our survival and our general wellbeing, especially during times of stress.

Sometimes we want to get away from technology to connect. Would going old-school help? Calling people on the phone, writing letters by hand, or making something for someone else. What would make you feel good? What might make others feel a sense of connection?

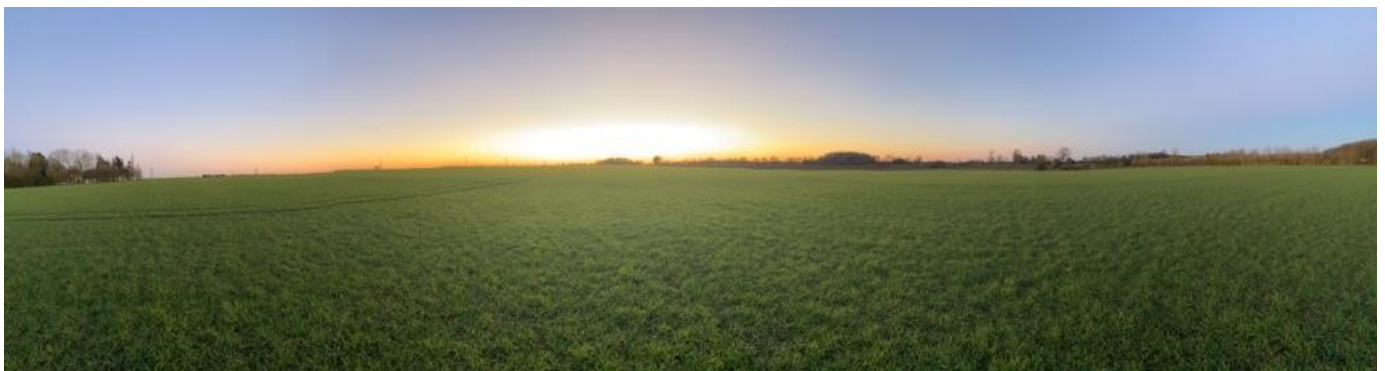
If you want to think more about your wellbeing during a winter lockdown check out this free ebook. It is easy to read and has lots of fun graphics: <https://www.hachette.co.uk/wp-content/uploads/2020/12/How-to-Stay-Calm-in-a-Global-Pandemic-Free-ebook.pdf>

If you feel that your life is being significantly impacted by a deterioration in your mental health, or if you are finding it difficult to get through the day without alcohol or other drugs, please contact your GP.

If you are worried that you might hurt yourself or someone else, please call your GP or the Samaritans on their free phone line: 116 123.

If you are feeling lonely and want to talk please contact the Toppesfield and Gainsford End Support Line on: 07341 264221

Dr Victoria Wallis (Clinical Psychologist)





TOPPESFIELD
Vineyard
Fine English Wine from East Anglia

Thanks first of all to everyone who stocked up on Toppesfield Wines at the Christmas Market in December. It was such a great day – all credit to the team who organised the event with such rigorous Covid measures in place. We were all pretty keen to get out and see people again and the atmosphere was just fantastic!

We also did a lot of local deliveries following our Shop Local advertising campaign – we are delighted that our new Sparkling Rose proved very popular in the run up to Christmas/New Year and for Valentine’s Day.



We bought some lovely Christmas decorations from Evans, at the top of the High Street, in Halstead in preparation for our Christmas/New Year bookings. Sadly these bookings had to be cancelled when we went into lockdown again. However, on the positive side, we have some great photos which will come in handy for early marketing of the accommodation for Christmas and New Year 2021!

We also had lots of interest for romantic Valentine’s breaks in February – hopefully some of the people who enquired this year will be back for February 14th 2022....

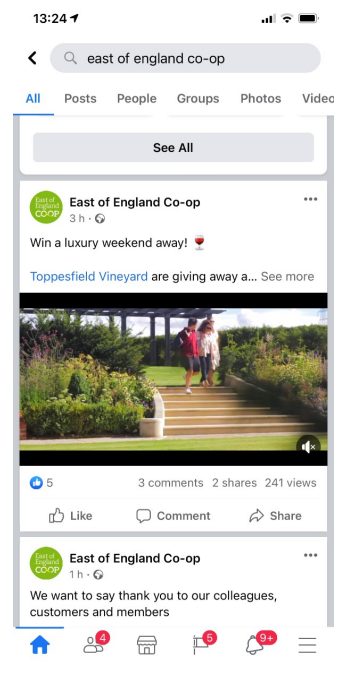
For those of you who shop regularly at the Coop in Sible Hedingham, you may have seen that they recently ran a Facebook competition to win a romantic, luxury weekend at Toppesfield Vineyard. This is a screenshot from when it first went live on Facebook.

We are very fortunate to be supplying over 100 East of England Co-op stores throughout North Essex, Suffolk and Norfolk. The Co-op really is a great customer; they are very supportive of many small, producers throughout East Anglia and donate significant amounts of money to a wide range of local causes. They have some great local products on their shelves if you fancy trying something new.

Here’s hoping we get back to more normal lives in Q2 of this year....

Take care,

Jane and Peter Moore



A photograph of a street scene featuring a church tower with a flagpole on top. A vibrant rainbow arches across the sky, passing behind the church tower. The street is wet, reflecting the light. There are trees and buildings on either side of the street.

A Winter's Tale

A sharp snap of winter fills the air,
The gentle touch of Jack Frost, brushes through your hair.

Tremendously long glistening icicles, hang from rooftops low down,
In which, with a thoughtful eye, an array of colours can be found.

Little bird footprints are made in the snow while foraging for their nest,
And signs of loved ones being near, with the sight of Mr Robin Red Breast.

The playful sounds of children, bring warmth to the heart,
While their rosy red cheeks bring back forgotten smiles, that have been lost
while we have been apart.

Daffodils pushing through, signals spring is on its way,
A reminder that warmer, brighter times are getting closer each day.

And as winter fades, we pray for those hugs we have all been longing for,
But now, more than ever keep the faith and push on through, as we hear a
faint tap of hope knocking on our door.

Keep Smiling Everyone



The Green Man

Church Lane, Toppesfield, Halstead, Essex, CO94DR
(01787) 237418

Hello Everyone.

We hope that you are all safe and well, and all feeling optimistic now that the end of all these restrictions is in sight.

We are really happy to announce that The Green Man will be opening the Beer Garden on Friday April 16th at 2pm.

In addition to all the outside tables, there are 6 new 3m x 3m gazebos in the garden for use on a first come first served basis. In case it turns a little chilly, we also have heating available for a small fee.

Initially we will be open Friday, Saturday, and Sunday with the opening hours:

Friday 2 – 11pm

Saturday 10am – 11pm

Sunday noon – 7pm

The kitchen will also be open:

Friday 5 – 8pm

Saturday 10am – 12 noon

5 – 8pm

Sunday 12 noon – 4pm



Saturday morning will be the Breakfast menu including the Big Breakfast, the "Friday Menu" will also be available Saturday evenings, and traditional roasts on Sunday.

In addition to opening, we will continue to offer all meals as takeaways and will also deliver where needed.

We are REALLY looking forward to welcoming you back to The Green Man and hope to see you on April 16th to celebrate just being open!

David and Paul.

St Margaret's Parish Church

It's almost a year since the first lockdown started and we're still unsure when the life of the church can return to normal. At the moment the church is open every Wednesday morning for private prayer and it's wonderful that some people are making a practice of visiting then. Also Rev Liz is broadcasting a service which we can share every Sunday morning on YouTube.

Now, depending on Government guidelines we hope we can at least open the church for visitors on Mothering Sunday and very much hope that we can celebrate Easter properly this year.

Turning to the church's finances, we're very grateful to those in the village who've helped this year by making a donation or arranging on-line giving. We were unable to hold any of the usual fundraising events in 2020, which normally raise about £5000 a year, and had no services for a number of months, so income was much reduced. Thanks to your generous support through on-line giving, we've been able to make up for the lack of services, but not for most of the events income. After some cost reductions there was a deficit of about £2500 by the end of the year.

One or two important points to remember about the church's finances:

Contrary to some people's belief, we have to be self-sufficient. We receive no income from the national church. In fact, we make a large payment to the diocese as our share of the cost of Rev Liz our Rector.

Weddings and funerals help a great deal, but in our small village we can't rely on many of them.

Most expenditure is fixed; we can't reduce it any more.

Insurance, maintenance and repairs are expensive and we've kept the cost down as far as possible. But we need to tackle some major repairs and changes that will only be possible through grants and fundraising.

Financial prospects for 2021 are just as uncertain. Church services won't start again for some weeks and the chances that we can hold our fundraising events - the fete, cheese and wine evening and supper auction - depend on social distancing restrictions all being removed.

So thanks again to those of you who are helping by on-line giving; if others would like to join in to help us avoid another deficit this year bank details again are:

Account name Toppesfield Parochial Church Council

Sort code 20-97-40 Account no. 20880078



Remember, St Margaret's church, the building and spiritual place at the heart of our village, isn't someone else's church, it's ours to care for and pass on to future generations.

TOPPESFIELD ALLOTMENTS

BRRRRRR freezing conditions - with February giving us the coldest snap - have put a hold on works over the allotments since Christmas, apart from an impromptu hedge border trim - socially distanced with help from Erin.



Rob's suggestion of a working party as soon as the covid 19 lockdown restrictions allow us, will be implemented. One of those working parties will manage a bonfire and perhaps those in the village that seem to think the allotments bonfire is a general dumping ground may also like to volunteer.



The allotments Group has secured a District Councillors Grant of £200 towards our fund for building a shelter for inclement weather. We are looking for further funding to allow us to self-build a timber structure that will serve us all when we can socialize again with our newly acquired Gas BBQ.

Any local companies that can offer timber or roof coverings would be gratefully received.

We could also make use of any road plane chippings or similar for the foot-path from the Causeway as it becomes very muddy during wet weather.

Watch out the secretary (Clare The Demon walker) will be sending out for subscriptions in April which as you know help to fund maintenance and water for the allotments.

Tommo's Tips

There is not a lot to do until the weather breaks, but here are some chores to get us started for the new season.

Parsnip Growing

When soil is warm enough, pre-water, drill and station sow 3-4 seeds per station. Place a plank over the drill. After about 14 days start checking for germination. As soon as there is, remove the plank.

Then it's as normal, thinning down to one plant when the seedlings are big enough. I get virtually 100% success rate.

The logic:- the plank has several purposes. It prevents the soil (and seeds) from drying out; and because the seeds are only just below the surface, it prevents them from blowing away. Similarly, if there's heavy rain, it prevents the seeds from being washed away. Finally, if there's a sudden brief cold spell, it will retain the heat for a day or so.

Pruning —Walnut trees need to be pruned before the end of March to avoid the sap being too active.

Onion sets — Get them in from anytime now

Finally

Thanks to allotment holder Hal for finding this great picture from the 1950s of Toppesfield

Do you remember these times gone by?

Paul Thompson Chair





The roadmap to the perfect pint.

No need to wait for the easing of restrictions. There's plenty of opportunity to enjoy a Pumphouse pint right now. We've been selling over 200 bottles at a weekend, plus lots of drink-at-home draft beer.

All these are available in bottles NOW

GOLD 4.2% ABV PALE OKTOBER 3.8% ABV

ST MARGARET'S ALE 3.8% ABV ALLIED AMBER 3.6% ABV

19 ELMS 4.3% ABV

Available in bottles SOON

THE 9th's HAVOCS 4.3% ABV BLACK 4% ABV

MYSTERY ALE 4% ABV

A special test brew, developed in readiness for celebrations to mark the 10th Anniversary of the Prince's Countryside Fund. Be one of the first to try it!



THE PRINCE'S
COUNTRYSIDE
FUND

All bottles are just £2 each for 500ml and there are always one or two Draft Beers

in 4-pint takeaways at £2 a pint.

See our Facebook page or visit the Brewery (Tina's Taproom) and try before you buy.

Fridays 10am-4pm and Saturdays 10am-1pm.

We are pleased to take card payments, cash or bank transfers.

Trevor Wyeth has taken on the role of chairman of Pumphouse as Alan Collard has stepped back to devote more time to other responsibilities. Trevor looks forward to meeting our many customers and friends.

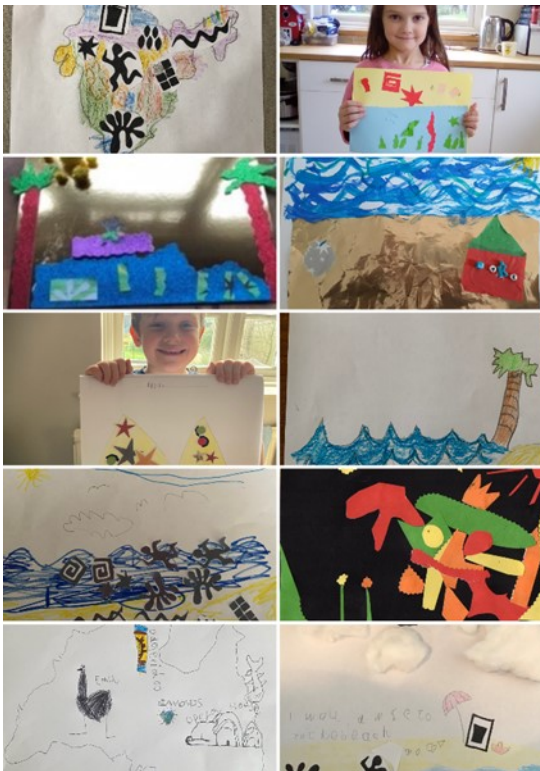
St. Margaret's C of E Primary School

This term has not been the term any of us imagined when we broke up for the Christmas holidays. However, the children and their families have shown incredible endurance and positivity and have embraced remote learning as they have continued with their learning. We are so incredibly proud of all the pupils and parents in the school, as well as the staff who have been working hard educating the children of critical workers on site and providing remote learning for those at home.

Have you had a look at our website lately? We now include a spotlight for learning on our website to showcase some of the incredible work produced by our children and we have some fantastic videos produced by the pupils available. Why not take a look at the spotlight on learning and whole school gallery under the children tab to see our amazing achievements? Click on the link to take a look:

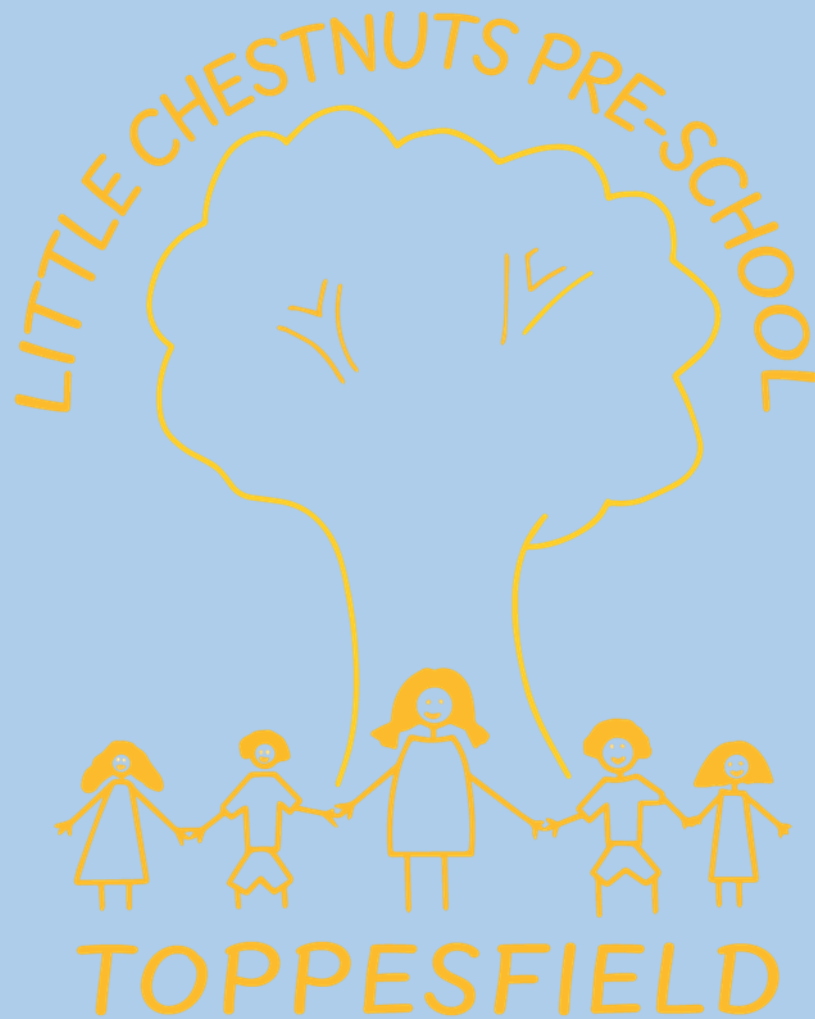
www.st-margaretscofe.essex.sch.uk

Class 2 have been creating art work inspired by Matisse:



This half-term, Class 3 have been making mythical creatures in art. They have been learning about different art mediums, including pencil, water colours, charcoal, collage and digital art. Each week, they have had to create a piece of their mythical creature using a different art medium. Finally, they had to cut all of the pieces out and stick them together to create their creature. Here is some of their fantastic art-work...





Spaces available for April and September 2021, for children aged 2 – 4 years.

Open Monday to Friday term time only.

We accept 2 year, 3 year old and 30 hour funding.

*Please visit our website for more information about our setting
www.Littlechestnutspre-school.co.uk*

Also follow us on Facebook and Instagram to see what activities and events we are taking part in.

*For more information or to book a visit please contact Andrea
07901880914*

Email: manager@littlechestnutspre-school.co.uk



TOPPESFIELD



Community Shop



*Support your community
to enable them to support you!*

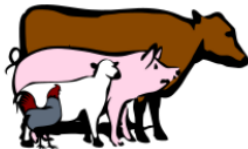
**We now stock a wide range of
frozen convenience foods
alongside our fresh and 'to order' products
all at very competitive prices**



Weekly orders

- Bacon
- Ham
- Sausages
- Chicken
- Lamb
- Beef

PRIORS HALL FARM



Fresh Quality Meat

Prices dependent on cut and weight

Fine wines



TOPPESFIELD Vineyard

Artisan bread

Fortnightly orders - Order by Tuesday 5pm for delivery the following Friday



- White Sourdough - £3.40
- Whole Rye & Whole Wheat Sourdough - £3.40
- Multigrain Sourdough - £3.60
- White Tin (AKA Bacon Sandwich Loaf)
Large £2.50 - Small £1.60
- Brown Tin (70% Wholemeal 30% White) £2.50
- Granary £1.80
- Focaccia (AKA Pub Crumpet) £2.30



*also available in
our freezer cabinet* Specialty
CAKES
PIES
PASTRIES

OPENING TIMES

Monday	8.30am - 1.00pm
Tuesday	8.30am - 1.00pm
Wednesday	8.30am - 1.00pm
Thursday	8.30am - 1.00pm
Friday	8.30am - 1.00pm
Saturday	10.00am - 12.30pm

POST OFFICE WEDNESDAY 10am - 1pm



Magazines & Newspapers

Do you have a favourite periodical?
Albeit Daily, Fortnightly, Monthly,
we can order it for you.



Together
We Thrive

ACTIVE MOTIVATION

AN ONLINE MOTIVATIONAL WALK

**TO HELP KEEP YOU ACTIVE!
SEATED OR STANDING!**

**Fridays 11.30-12.00
via Teams**



Please contact Jo Bryant for details and Teams link:
Email: jobryant@community360.org.uk Tel: 01206 505250

Community360
Winsley House, High Street, Colchester, CO1 1UG
Facebook: [Facebook.com/community360.org](https://www.facebook.com/community360.org) Twitter: @community360org
LinkedIn: [community360org](https://www.linkedin.com/company/community360org) Visit: www.community360.org.uk
Charity Number: 04426567 Registered Charity Number: 1092557



Postponed until 19th June 2022

Watch this space!



Designed and created by



AVORIO ANELLO

Ticket
information to
follow

Toppesfield views through the year



Spring



Summer



Autumn



Winter

And finally here's something we have all been waiting for (and Gainsford End residents more than most).

Yes, it's the end of 16 mile round trips between Toppesfield and Gainsord End, as Cust Hall bridge is rebuilt and reopened.

At last.

