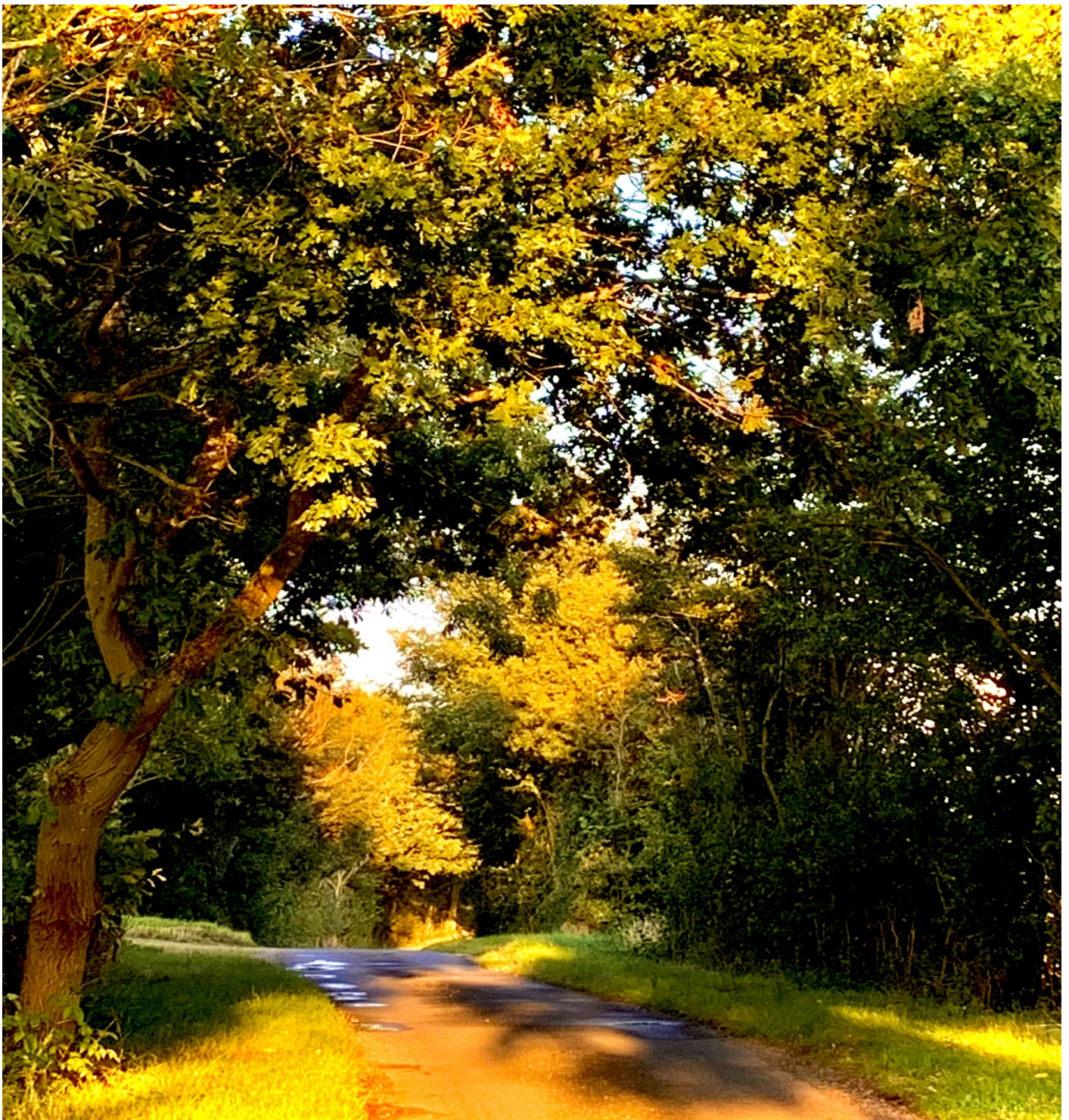


September / October 2023

Edition 195



## USEFUL NUMBERS

Braintree District Council	01376 552525
Colchester Hospital	01206 744491
Doctors Car Service	07845 596092
Freshwell Health Centre	01371 810328
Hedingham Medical Centre:	
Castle Hedingham	01787 461465
Sible Hedingham	01787 460612
Kaaren Berry, Parish Clerk	07341264219
Little Chestnuts Preschool	079018 80914
Little Hedgehogs Toddlers	01440 785778
Pumphouse Brewery	07780 702293
Rev. Caroline Brown	01787 469161
St Margaret's School	01787 237354
The Green Man Public House	01787 237418
Toppesfield Community Shop	07895 510767
Toppesfield Village Hall Bookings	
Wendy Ames	07933743724

## TOPPESFIELD COMMUNITY SHOP

Church Lane, Toppesfield. Tel: 07895 510767

Fresh Fruit & Vegetables, Milk, Newspapers, Confectionery, Pet Food, Dairy Products, Meat & Poultry, Coal and Kindling, Cards, Stationery and lots more!

Monday—Friday

8.30 am— 4.00 pm

Saturday—10.00 am—12.30pm

## TOPPESFIELD POST OFFICE

Church Lane, Toppesfield

Wednesday - 10.00 am—1pm

Services include: Special Delivery, Mobile Top Up, Insurance Services, Household payments, Travel Money, Moneygrams, Savings Accounts plus more!

## Toppesfield Parish Council

**Your Councillors are** - Alan Collard, Amanda Smith, Kitty Bourlet, Frances Winter, Jeremy Graves and Paula Edwards-Holmes. This means there is currently one vacancy for a parish councillor. If you are interested in joining the Parish Council please inform one of the councillors or the parish clerk.

Parish Clerk — Kaaren Berry

Parish Council Meetings are normally held on the first Thursday of every month in the village hall. You are welcome to attend the Open Session which starts at 7.30pm.

## Toppesfield & Gainsford End Parish Newsletter — Published by Toppesfield Parish Council

Editor: [clerk.toppesfieldparishcouncil@gmail.com](mailto:clerk.toppesfieldparishcouncil@gmail.com)

**Please submit your articles for the next newsletter by 20 October 2023.**

Please see our online resources to find out what is happening

Facebook Pages :-

Toppesfield & Gainsford End Community

Toppesfield Village Hall

Toppesfield Village Stores

The Green Man, Toppesfield

Pumphouse Community Brewery

Toppesfield and Gainsford End Neighbourhood and Development Plan

Twitter & Instagram— Toppesfield & Gainsford End Community

Website—<https://e-voice.org.uk/toppesfield-parish-council/>



## From the Parish Council



As we put together this September's edition of the Newsletter, students are preparing to return to their schools and their parents in many cases to their workplaces after taking holidays. It's tempting to think that our so-called summer is over, especially after the cool and wet weather we have seen for much of the past few months. However, the weather this week is warm and sunny and set to last for several days: a real 'Indian summer'. Apparently, the incidence of Indian summers has increased significantly over the past decade or so (in the UK at least), as our weather patterns change.

But life carries on and September sees the return of our annual Village Show which will take place on 16<sup>th</sup> September at the village hall. You will find information later in the Newsletter. Of course, one of the great things about the show is the chance it gives you to show off your horticultural, handicraft and culinary skills so do think about entering something in at least one of the categories.

Later in September, on Thursday 28<sup>th</sup>, Tammy Blest, who is a Fraud Prevention Co-ordinator at Essex Police (and who lives in Toppesfield) will be running an event to explain how we can all make ourselves more secure from the ever increasing number of scams and fraud that are being seen online. This is an important topic for all of us so come along and find out what you can do to help protect yourselves. We hope to see you at 7:00pm at the village hall on 28<sup>th</sup>.

The parish council is delighted to announce that our Parish Clerk, Kaaren Berry, has been awarded her Certificate in Local Council Administration ('CiLCA'). Kaaren fitted the almost 2 years of study and course work in between all the other work she does for the parish council and other organisations in the village. We are very pleased for Kaaren on her achievement. This means that the council has now been able to adopt the General Power of Competence. 'So what?', you may ask, but this power enables the council to carry out a wider range of activities than has hitherto been the case. Instead of having the power to undertake only specifically designated things, the GPC enables a parish council to do anything an individual can do – for example to set up a business.



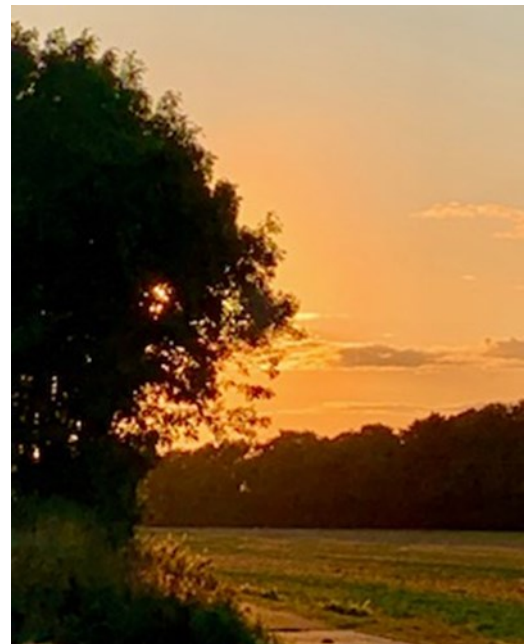
The parish council is pleased to welcome Paula Edwards-Holmes as a new councillor. Paula was co-opted at our August meeting and we look forward to working with her. Unfortunately, Trisha Roberts tendered her resignation when she and Paul moved to Wales last month. We are grateful for all that she has done in the parish over many years and her energy will be missed. This means that we still have a vacancy to get our numbers back to 7. If you are interested in joining the council, please get in touch with Kaaren and she will let you know what the role involves.

You may recall that the council embarked on the creation of a Toppesfield Parish Neighbourhood Plan in late 2019. Progress was unfortunately delayed by the covid lock-downs but the first draft plan will be prepared soon. Eventually this will have to be approved by Braintree before all electors in the parish will vote in a referendum as to whether to accept it or not.

Before that we will host a drop-in day at the village hall to explain the plan and to answer questions. Look out for information about this.

Finally, with so much happening in the wider world, it's not a bad idea to reflect on how fortunate we are to live in our parish. We do live in a very attractive part of the country and often take all that we have for granted. We also benefit from a range of amenities that many other communities would give their eye teeth for – the shop, the pub, the school, the church, the village hall and the brewery all combine to make this a unique village. And much of that is down to the small army of volunteers described on page 12.

Enjoy the Newsletter! And enjoy your village!



## Parish Council Information

A summary of Parish Council goings-on at the July and August Meetings:

In July Cllr Peter Schwier reported:

- The micro surfacing has been completed at the Halstead, Sible Hedingham, Braintree junction.
- Work on repairs to the gulley's around the District is being carried out.
- Work to the bridge at the White Hart, Great Yeldham looks like it will be completed by the end of the summer.
- Ride London was successful in the County and Essex County Council (ECC) have committed to another 3 years for the event to take place.
- ECC have undergone an Ofsted inspection for their Child Services and are waiting for the report with their findings.
- National Grid have an open consultation for the Norwich to Tilbury project. This is open for the public to submit their comments before it closes on 21.08.23. The following link will take you to their website: [Public consultation and programme | National Grid ET](#)
- The Locality Grant is available until February 2024 – enquires to be made directly to Peter Schwier. Councillor Collard asked about community energy projects and Councillor Schwier provided a contact name at ECC regarding energy projects. 689

Councillor van Dulken reported:

- Dart 3 – Cllr van Dulken provided some leaflets to promote the service. The service is underused at present.
- Braintree District Council (BDC) are rolling out their food waste recycling project to encourage more food waste to be recycled as 26% of waste for landfill is food waste.
- Wethersfield Asylum Centre – the judicial review is taking place on the 12th /13th July 2023 and reported no one will be moving in prior to the 11th July.
- There is no update on the enforcement action for the Fishing Lakes on Great Yeldham Road.
  - At the cabinet meeting to be held on 10th July will include the Rural England Prosperity Fund and a decision on whether or not to charge for the garden waste collection service will be made.
- Finchingfield and Wethersfield have made a joint neighbourhood plan application.
- Cllr van Dulken is a BDC representative on the Stansted Airport group. A plan to build a new arrivals terminal has been shelved but they will extend it towards to the runway.

Highlights from the July meeting were:

- The repairs to the basketball hoop backboard have been completed and the backboard reinstated for use.
- Park Lane Car Park – before part of the car park can be considered for selling consultation with Braintree District Council is required due to a clause on the original sale of the land to the parish council
- Potential improvement project for the Toppesfield Pump area. A proposal for improving the area around the village pump was discussed and it was agreed to look into this in more detail and what would be acceptable to highways.
- Several planning applications were discussed
- Volunteers are required for updating the village Facebook page

## Parish Council Information continued

A member of the public raised concerns about the Horse chestnut and Lime trees along the Causeway and around the plots of land adjacent to the Causeway which have recently been sold. Braintree District Council (BDC) have been contacted to find out which trees have TPO's on them. A plan showing the trees with TPO's on them was presented to the parish council. If any work is carried out to the trees this should be reported to BDC immediately.

Councillor van Dulken reported:

- The garden waste charge will start from April 2024, if residents sign up early via their website an early bird discount can be applied. Discounted rate will be £27.50 and full rate is £55.00 for the year. It is an opt in service.
- That he attended a meeting on 31 July at Wethersfield where the Home Office held an open meeting for the public.
- The constituency boundary changes will not affect this area.
- BDC have issued a press release to say their Garden Community and Open Spaces fund is open for applications. Cllr van Dulken suggested that maybe Church Lane byway could incorporate a route for cyclists to join Toppesfield to Great Yeldham and he will speak to his colleagues regarding this.

Highlights from the August meeting were:

- Cllr Collard has arranged for a Scam and Fraud Awareness session to be held in the village hall on 28<sup>th</sup> September 2023 at 7pm.
- Paula Edwards-Holmes was co-opted to the parish council.
- Improvements to the parish office were approved.
- Some work to rear of the has been carried out to clear behind the pavilion, with further being carried out in the Autumn to complete the task. There is an overhanging tree from the school grounds which will impact the basketball hoop if it is not trimmed back . The parish council will engage someone to trim the overhanging tree.
- The possibility of additional equipment to be installed on the playing fields was discussed. Cllr's Winter, Smith and Bourlet to draw up a plan for both Toppesfield and Gainsford End playing fields.
- Proposal to remove a dead tree from along The Causeway and its possible replacement. It was agreed that this should be removed and replaced and costs to be gained.
- The Parish Council confirmed eligibility and adopted the General Power of Competence
- Park Lane Car Park – information to be supplied to BDC regarding the original purchase of the carpark.
- Potential project for the pump – information required by Highways regarding funding of project including; feasibility studies, planning, design work and the cost of the scheme. This was discussed and it was agreed to contact BDC and look into completing an outline planning permission application.
- Volunteers are required to represent the parish on the Wethersfield Association Scrutiny Committee and to administer posts to the parish Facebook page. A couple of volunteers have come forward to help deliver the newsletters.
- Enquires about setting up a Neighbourhood Watch Group have been received and this is being looked at.
- Cllr Roberts resigned as Councillor as she will be moving from the parish. Cllr Roberts was thanked for all her hard work and support both to the parish council and the village.

# **Toppesfield and Gainsford End Village Show 2023**

**Saturday 16th September**

**Toppesfield Village Hall 2.00pm**

Show day is fast approaching and I do hope you have been keeping an eye on your flowers, fruits and vegetables and well as practising your baking, needle, photo and paintbrush skills.

There is something for everyone in the show and I do hope you are going to enter. Just one class would be fantastic.

There is going to be an amazing raffle, stalls by local suppliers and games, competitions and fun activities for all. Then when you have had a look around the exhibits sit and enjoy a delicious cream tea and catch up with friends.

## **Dates to note**

**Thursday 14th Sept** bring your entry forms to the **village hall** between **7.00pm and 8.00pm** to collect your exhibitor's cards. If you can't get to the village hall on Thursday evening you can leave your entry forms at the shop and I will sort your exhibitor's cards for you. Please note the age must be on the children's entry forms.

**Saturday 16th Sept** Please bring your entries, complete with exhibitor's cards to the **village hall between 8.30 am and 10.00 am**.

**Saturday 16th Sept 2.00pm** Come and check on your entries and enjoy the show.

Donations for the raffle will be most welcome and can be left at the shop .

**I am looking forward to seeing you and your exhibits at the show.**

**Ann Read**



## St Margaret's Church

### Church services from September to December

September 3rd	Morning Prayer	11.00am	
September 10th	Holy Communion	11.00am	Rev Caroline
September 17th	Morning Prayer	11.00am	
September 24th	Holy Communion	11.00am	Rev Graham
October 1st	Morning Prayer	11.00am	
October 8th	HARVEST FESTIVAL	4.00pm	
October 15th	Morning Prayer	11.00am	
October 22nd	Holy Communion	11.00am	Rev Graham
October 29th	Benefice Service	11.00am	Sible Hedingham
November 5th	Holy Communion	11.00am	Rev Tim Goodbody
November 12th	REMEMBRANCE SERVICE	10.45am	Rev Graham
November 19th	Baptism	11.00am	Rev Caroline
November 26th	Holy Communion	11.00am	Rev Graham
December 3rd	Morning Prayer	11.00am	Rev Nick Ellis
December 10th	Holy Communion	11.00am	Rev Caroline
December 17th	Carol Service	3.00pm	
December 24th	Christmas Holy Communion	6.30pm	Rev Graham
December 25th	Christmas Family service	11.00am	Rev Graham
December 31st	No service		





## Advance notice

Supper Auction in the Village Hall

Friday 10th November

Put the date in your diaries and start collecting wonderful things to put in Toppesfield's famous Supper Auction.

Details on how to get tickets will be made available shortly.



## Toppesfield Village Hall

Don't forget the village hall is available to hire.

For more information please contact me Jean on 01787 238178 or

Wendy on 079337 43724

**The Next Village Markets will be held at  
Toppesfield Village Hall on:**

**Saturday 9th September 10.30 am – 12.30pm**

**Saturday 7th October 10.30am – 12.30pm**

**Christmas Market – Saturday 2nd December**

**11.00am – 3.00pm**

Please pop along to see what is on offer from fresh meat, jams, pastries, and cakes to handmade crafts, cards, jewellery and more.

Or pop in for a tasty bacon roll and a cuppa with friends.

## News from the Footpaths



Hi Everyone

I hope you are all well and enjoying the better weather again. It has been such a strange Summer with very hot and dry days early on when the gardens and crops were so dry then the rain starts and it has been a nightmare for the farmers getting the crops harvested.

Every season brings its' delights and now the fruits and seeds are developing in the hedge-rows and soon we can look forward to the colours of the trees turning but I have to say I do not enjoy the shortening daylight hours and make the most of the sunshine we have.

Just on a walk a few days ago came across a lovely show of teasel flower heads. I think they are such a brilliant plant . The flowers provide nectar for the bees and butterflies. Teasels are in fact members of the scabious family. Then the seeds provide much needed food for the birds. Teasel seeds are a particular favourite of the goldfinches. In the winter the seed heads can become part of your indoor decoration. Of old the heads were used to tease out the wool in preparation for spinning and the roots it is thought had medicinal properties. So all in all a multi tasking plant!



Re the footpaths, I have provided highways with a list of waymarker posts that need attention but unfortunately nothing has come of this. I have contacted highways again regarding this issue but was told that they were busy grass cutting at this time. Anyway I will keep on!

Do keep walking. We are constantly being told that walking in the countryside is so good for our mental health. We certainly found that during Covid lock down. Just a short walk of say 15 minutes everyday is so worthwhile. You will see and hear things and meet someone for a quick chat on the way. All good and it's free!!!!

Take care and enjoy your walking.

Ann Read

# PUMPHOUSE

## BREWERY

Welcoming a  
full Double  
Decker to  
the Brewery on  
**American Day**



On Sunday 20 August we were delighted to welcome well over 50 visitors, including several American families here to celebrate the 80th Anniversary of Wethersfield Airfield. They travelled to Pumphouse in a superbly restored 1939 Bristol K to see where we brew the 9th's Havocs (our Wethersfield heritage American style IPA) and Allied Amber (our D-Day traditional bitter). On a gorgeous sunny afternoon there seemed to be no cultural resistance to 'warm English beer' as they piled into the Green Man to try a pint or three.

It may only be September, but now's the time to **order your Christmas beer and save money!**

A pin of draught real ale holds 36 pints and is the perfect way to serve delicious beer to family and friends over the festive period. For orders received and paid for by 31 October 2023, we're offering our private local customers a special price of just £39.

**Just £39 for 36 pints. That's £1.08 a pint! Your choice of your favourite beer will be brewed to order and your pin (or pins) will be ready for collection or delivery a few days before Christmas.**

This year we'll be exhibiting at a number of seasonal markets, including Presents Galore (East Anglia's largest Christmas Fair) at Newmarket Racecourse on 24, 25 and 26 November. We're majoring on our three bottle gift packs which make lovely presents - and will of course be available direct from the Brewery (from October). Bottles are available now direct from the Brewery on Wednesday, Thursday and Friday from 10 to 4.

The Brewery will be open on village market Saturdays in October, November and December.

**Cheers from Aaron, Kaaren , Tina, Paul, Mick, Julia & Richard**

# St. Margaret's C of E Primary School



Welcome back to the new school year!

We have only just returned to school following the summer break and are delighted to have welcomed 12 children into our reception group. We are also delighted to welcome Miss Lodge to the team as our Seed Class teacher.

At the end of the academic year we were inspected under section 48 as a Church School and I am delighted to report that we received a good grade with the inspector recognising that 'The whole school is motivated to live life in all its fullness' and 'Pastoral care is a strength. The friendly atmosphere is treasured. Parents quite rightly praise the caring family feel and 'phenomenal' pro-active support given'. The full report can be read on our school website: <https://st-margarets-cofe.secure-primariesite.net/school-results-and-inspection-information/>

We start the school year with our beautiful reflection garden, which was opened by Bishop Roger of Colchester on July 6<sup>th</sup>, in use to allow children and staff an opportunity for calmness and spiritual reflection.



We look forward to an amazing year ahead during which we will keep you up-to-date with school life.

Facebook: [St. Margaret's CofE Primary School, Toppesfield](#)

Twitter: @StMargaretsTopp

Instagram: stmargaretstopp



# Volunteers - the unsung heroes of our parish

## Why volunteer?

With our busy lives, it can be hard to find time to volunteer. However, the benefits of volunteering can be enormous. Volunteering offers vital help to people, worthwhile causes, and the community, but the benefits can be even greater for you, the volunteer.

Giving to others can also help protect your mental and physical health. It can reduce stress, combat depression, keep you mentally stimulated, and provide a sense of purpose. While it's true that the more you volunteer, the more benefits you'll experience, volunteering doesn't have to involve a long-term commitment or take a huge amount of time out of your busy day. Giving in even simple ways can help those in need and improve your health and happiness.

## Benefits of volunteering:

1. Volunteering connects you to others and helps you to make new friends.
2. Volunteering is good for your mind & body and gives you the 'feel good factor'.
3. Volunteering helps you improve your communication skills and improves your self-esteem and confidence.
4. Volunteering helps you feel part of the community and makes the community awesome!
5. Volunteering helps you share your talents, learn new skills and create a better work-life balance.
6. Volunteering helps to combat stress, loneliness, social isolation and depression.

## Volunteering opportunities:

Within the parish there are many opportunities for you to volunteer. Each volunteer role is as important as another. Many of the village organisations cannot run without volunteers. They are the unsung heroes of the parish.

Each year there are opportunities for volunteers to get involved whether it be on a committee, in the shop, at the school, helping neighbours, social media posts, assisting with special projects, delivering leaflets or helping at annual events such as the supper auction or the Christmas lighting up event.

If you are already a volunteer, a huge thank you for your time and support.

If you are able to volunteer in any way please contact the relevant organisation or if you are unsure who to contact please contact the parish clerk for assistance in pointing you in the right direction.

# TOPPESFIELD Community Shop



Forever grateful to them all, how wonderful it was to be able to acknowledge the fact and bring back our **Volunteers Barbecue** on Friday 18th August (*the first since 'the pandemic'*)



Being able to hold it in 'our very own, **Garden Café**' with the glorious weather, made it an especially glorious afternoon.

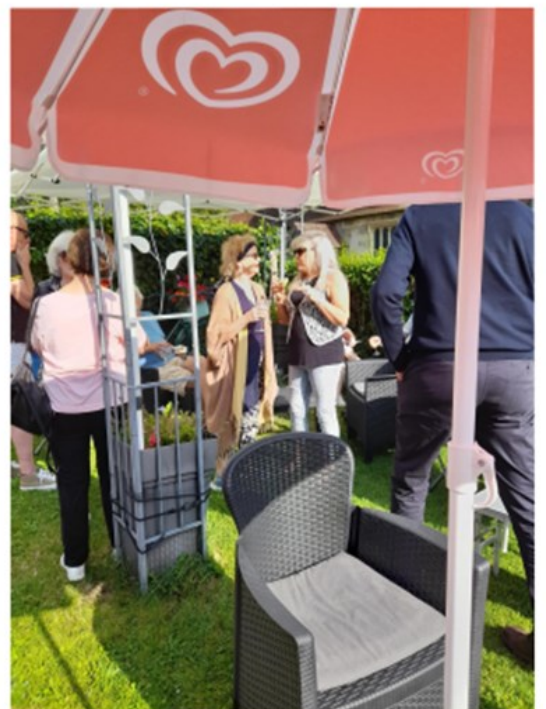
Special thanks must also go to Vivki & Trevor, for the loan of their fabulous barbecue and of course, Charles, for doing all the cooking.



Don't forget, our **Garden Café** is there for all to use during shop opening hours.

With teas, coffees, snacks, and ice creams all on sale, it's a comfortable resting place, whether you're out walking, cycling, shopping or just meeting up with friends.

*Due to licensing laws, no alcohol is to be consumed on the premises.*





**In Your Area**  
**ESSEX POLICE**

# Scam & Fraud Aware

## EVENT

**SECURE PROTECT PREVENT**

Come along for help and advice on keeping safe & secure online and spotting scams and fraud.

**Event Details:**  
Fraud / Scam Awareness Talk

**Location:**  
Toppesfield Village Hall

**Date & Time:**  
Thursday 28th September at 7pm

You can also find tips and advice on property security on our website: [essex.police.uk/secure](https://essex.police.uk/secure)

**ESSEX POLICE**  
Protecting and serving Essex

Are you worried about the latest scams or have concerns about fraudsters?

Please come along to the village hall on Thursday 28th September at 7pm for an evening of advice on keeping safe and secure online and finding out how to spot the scams and fraud.





# TOPPESFIELD



## Community Shop



*Support your community  
to enable them to support you!*

**We stock a wide range of  
frozen and convenience foods  
as well as many household products  
alongside our fresh and 'to order' services  
all at very competitive prices**



**Weekly orders**

Bacon  
Ham  
Sausages  
Chicken  
Lamb  
Beef

**PRIORS HALL FARM**



Fresh Quality Meat

*Prices dependent on cut and weight*

**Fine wines**



**TOPPESFIELD**  
Vineyard

**OZES**  
cdp

also available in  
our freezer cabinet

Specialty  
CAKES  
PIES  
PASTRIES

### **Magazines & Newspapers**

Do you have a favourite periodical? Albeit Daily, Fortnightly, Monthly, we can order it for you.

### ***Eat In or Takeaway***

***Coffee, Tea, Hot Chocolate, Cold Drinks, Ice Cream  
Soup, Rolls***

### **OPENING TIMES**

Mondays	.....	8.30am - 4.00pm
Tuesdays	.....	8.30am - 4.00pm
Wednesdays	.....	8.30am - 4.00pm
Thursdays	.....	8.30am - 4.00pm
Fridays	.....	8.30am - 4.00pm
Saturdays	.....	10.00am - 12.30pm

**POST  
OFFICE**

**OPEN**  
Wednesdays  
10.00am - 1.00pm



## **Chewbacca & Mohawk 18149 18150 - Danaher Animal Home.**

Chewbacca & Mohawk are a very bonded pair of male adult neutered guinea pigs looking for a home together. They would love a new home or hutch with lots of love and treats, as well as a nice outside run to play in and eat grass, which is their favourite hobby! They have always lived together as a pair, so would be better homed as the only guinea pigs. They are a beautiful dear little pair of boys that would make a brilliant adoption for anyone wanting to home them.



To register your interest for them, please do to our website [www.danaheranimalhome.org.uk](http://www.danaheranimalhome.org.uk) and fill out the interest form at the bottom of their profiles.

## **Danaher Animal Home – Lila 17962**

Lila is our beautiful 1 year old German Shepherd cross. She is super friendly and full of energy. Some of her favourite games are fetch and tug, and splashing around in our dog pool! Lila is really sweet natured and would be suitable for a family with older children, and some previous shepherd experience. She is still young and has a lot to learn, and would need on going lead and socialising training to contain that excitement!



To register your interest for her, please go to our website [www.danaheranimalhome.org.uk](http://www.danaheranimalhome.org.uk) and fill out the interest form at the bottom of her profile.



## **Sponsorship**

**Not able to adopt, but would like to help them find their perfect forever home?** Please consider sponsoring or part-sponsoring an animal whilst they in our care to help find them the perfect loving home they deserve faster, also enabling us to help even more animals. Details can be found on our website too.

---

Pre internet chat room using  
An old version of windows...



Things were so much  
easier then.....

---

Now, this is why I'm a 'cat person'!





## BAR OPENING HOURS

Monday - Closed  
Tuesday - Thursday 3 - Close  
Friday- Sunday 12- Close

## KITCHEN OPENING HOURS

Wednesday & Thursday 5-8  
Friday & Saturday 12-9  
Sunday 12-4

## Weekly specials

Sunday Roast featuring sirloin of beef and large selection of fresh vegetables

## What's On

Fun Quiz - Last Sunday of the Month from 6pm  
Proceeds to Air Ambulance

Open Mic - First Sunday of every month from 5pm  
All welcome

For take away and table bookings please call 01787 237418

# **Toppesfield + Gainsford End Village Show**

**\*\*\*\*\***

**Sat 16<sup>th</sup> Sept  
2.00pm**

**Toppesfield Village Hall**

**\*\*\*\*\***

**Competitive Show**

**Raffle Competitions Stalls  
Refreshments**

**\*\*\*\*\***

**A great afternoon for all the family**

Further Info :Ann Read 01787 237464