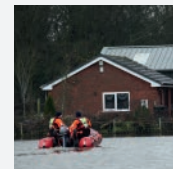




Lancashire Fire  
and Rescue Service

**2022-2027**



# Community Risk Management Plan



making Lancashire safer

# CONTENTS

Introduction	2
Our county	4
Lancashire Combined Fire Authority	6
Aim, priorities and values	7
Our future	8
Equality, diversity and inclusion	10
Service planning	12
Corporate planning	14
Risk management	14
Flooding and water rescue	18
Wildfires	19
Accidental dwelling fires	20
Commercial and industrial building fires	21
Deliberate building fires	22
Road traffic collisions and vehicle fires	23
Rescues from collapsed structures / confined space	24
Hazardous materials incidents	24
Animal rescues	25
Assisting other agencies	26
Building under construction fires	27
Waste disposal site fires	28
High rise fire incidents	29
Core strategies and how we direct and deliver operations	30
Our people plan	35
Our financial plan	36
Resource to risk	37
Service assurance/operational assurance	39
Key performance indicators	40
Reviews	40

# WELCOME TO OUR

## Community Risk Management Plan



Lancashire Fire and Rescue Service has a long and proud history as a valued part of communities across the county, helping to keep people safe and responding to emergencies.

Everything we do is aimed at making Lancashire safer and in recent years we have adapted considerably to changing risks, meaning we now assist people in more ways than ever before. Activities such as gaining entry to properties where there's a medical emergency and searching for missing people are saving additional lives. Our expertise has grown to include the far-reaching impacts of weather-related emergencies and the rising complexities of modern buildings. We have led innovation and collaboration with the introduction of bespoke water tower fire engines that reduce damage to businesses and homes, and the creation of the first fire and police air support unit adding aerial intelligence to our capabilities.

In 2018, Her Majesty's Inspectorate of Constabulary and Fire and Rescue Services (HMICFRS) inspection regime confirmed that we are a strongly performing, forward-thinking Service, with outstanding values and culture.

Our people are at the heart of our achievements. Motivated, professional and determined to make a difference, they serve Lancashire with pride. Coupled with the highest standards of operational effectiveness, this helps us to reach our goals and a long-standing commitment to continuous improvement keeps the Service evolving. Learning from incidents and difficult operating conditions drives our progress and having the confidence to try new ideas results in positive change.

Our ability to serve communities in ways beyond our traditional role has never been more evident than during the coronavirus pandemic. The Service played a central role in the response to the crisis, working as one team alongside partner agencies. The skills and attributes of our people enabled them to carry out vital activities, from visiting the most isolated and vulnerable residents in the initial stages to vaccinating people against the virus to bring us out of the pandemic. At the same time, we continued to deliver first-rate emergency services and tackle multiple large-scale fires, wide-spread flooding and a series of wildfires in very challenging circumstances.

This plan sets out how we will achieve our aim of making Lancashire safer over a five year period based on risk and demand across the county. Preventing fires and other emergencies from happening, protecting people and property when they do and responding quickly and competently

are clear priorities. We will continue to hone how we do this by deepening our understanding of Lancashire's diverse communities and equipping ourselves to serve them as effectively as possible.

Becoming more agile and flexible in our approach to work and how we deliver services will enable us to respond to emerging risks swiftly, where our skills and experience can strengthen community safety.

Despite a stable financial position, future funding is uncertain and our commitment to providing value for money is steadfast. Digital transformation and new technology present opportunities to become more efficient and effective across many areas of work.

Strengthening the values and leadership that shape our culture and providing an inclusive workplace that allows everyone to develop and thrive is at the forefront of our future. Lancashire Fire and Rescue Service will rise to the challenges and opportunities of local and national change positively, leading innovation in the sector and delivering collaborative public services.

We aspire to be outstanding in all that we do by being the best trained, best equipped, best accommodated and most professional fire and rescue service in the country.

**Justin Johnston**  
Chief Fire Officer  
Lancashire Fire and Rescue Service

**David O'Toole**  
Chairman  
Lancashire Combined Fire Authority

Our people are at the heart of our achievements. Motivated, professional and determined to make a difference, they serve Lancashire with pride.





# OUR COUNTY

Lancashire is an area in the north west of England neighbouring five counties; Cumbria, Greater Manchester, North Yorkshire, West Yorkshire and Merseyside. Lancashire comprises twelve districts within the Lancashire County Council area, and two unitary authorities in Blackburn with Darwen and Blackpool.

The county consists of urban areas, suburbs, semi-rural and countryside locations covering 3076 square kilometres of land with 123 kilometres of coastline.

## OUR COUNTY in more detail

Mid-2019 population figures show that Lancashire has a population of 1,508,869 people. Since the 2011 census, the population has grown by 3.3% with a rise of 0.8% between 2018 and 2019. Lancashire is home to some of the most deprived areas in the country, as calculated by the indices of multiple deprivation (IMD), which can lead to increased risk in communities (see infographic opposite).

- The largest ethnic group was white (90%)\*. The black and minority ethnic (BME) group formed 10% of the population. Numerically, there were almost 141,000 black and minority ethnic people living in Lancashire.
- The over 65 age group saw a higher annual growth rate, 1.58%, than the 0-17s (0.6%) and 18-64 (0.5%).
- Average life expectancy for males is 78.5 and for females is 82.2 years old.
- The 2018 fuel poverty statistics indicate that 12.6% of households were fuel poor compared to the national average of 10.3%.
- 13.2%\* of all Lancashire's households were occupied by one-person living alone aged 65 and over. In total, 16.9% of all households in Fylde had one person in this age-group, which was the 12th highest rate in England and Wales.

\*From 2011 census

WYRE	
Population (2019)	112019
Area Km <sup>2</sup>	283
Homes (2019)	52410
IMD rank (317)	147
Road lengths (miles)	424.70

LANCASTER	
Population (2019)	146038
Area Km <sup>2</sup>	576
Homes (2019)	63510
IMD rank (317)	112
Road lengths (miles)	626.65

BLACKBURN WITH DARWEN	
Population (2019)	149696
Area Km <sup>2</sup>	137
Homes (2019)	61290
IMD rank (317)	14
Road lengths (miles)	345.90

HYNDBURN	
Population (2019)	81043
Area Km <sup>2</sup>	73
Homes (2019)	36890
IMD rank (317)	18
Road lengths (miles)	225.63

RIBBLE VALLEY	
Population (2019)	60888
Area Km <sup>2</sup>	583
Homes (2019)	27350
IMD rank (317)	300
Road lengths (miles)	421.49



FYLDE	
Population (2019)	80780
Area Km <sup>2</sup>	166
Homes (2019)	39820
IMD rank (317)	198
Road lengths (miles)	304.45

BLACKPOOL	
Population (2019)	139446
Area Km <sup>2</sup>	35
Homes (2019)	70190
IMD rank (317)	1
Road lengths (miles)	284.40

PRESTON	
Population (2019)	143135
Area Km <sup>2</sup>	142
Homes (2019)	64100
IMD rank (317)	46
Road lengths (miles)	401.98

CHORLEY	
Population (2019)	118216
Area Km <sup>2</sup>	203
Homes (2019)	51620
IMD rank (317)	192
Road lengths (miles)	351.10

SOUTH RIBBLE	
Population (2019)	110788
Area Km <sup>2</sup>	113
Homes (2019)	50160
IMD rank (317)	210
Road lengths (miles)	328.63

WEST LANCS	
Population (2019)	114306
Area Km <sup>2</sup>	347
Homes (2019)	50210
IMD rank (317)	178
Road lengths (miles)	519.99

PENDLE	
Population (2019)	92112
Area Km <sup>2</sup>	169
Homes (2019)	40370
IMD rank (317)	36
Road lengths (miles)	284.88

BURNLEY	
Population (2019)	88920
Area Km <sup>2</sup>	111
Homes (2019)	41080
IMD rank (317)	11
Road lengths (miles)	269.23


ROSSENDALE	
Population (2019)	71482
Area Km <sup>2</sup>	138
Homes (2019)	32160
IMD rank (317)	91
Road lengths (miles)	198.39




# LANCASHIRE COMBINED FIRE AUTHORITY

The Lancashire Combined Fire Authority (CFA) is responsible for leading and supporting Lancashire Fire and Rescue Service. The CFA has a membership of 25 elected councillors consisting of 19 from Lancashire County Council, three from Blackburn with Darwen Council and three from Blackpool Council. Under the Fire and Rescue Services Act 2004 the CFA is legally required to enforce fire safety legislation and to reduce the risk of fire causing death, severe injury and property related losses to the community. It must also make provision for rescuing people in the event of road traffic collisions and for protecting people from serious harm arising from road traffic collisions in the Lancashire area.

The CFA is legally responsible for the enforcement of the Regulatory Reform (Fire Safety) Order 2005 which is applicable across England and Wales. This Order places the responsibility on individuals within an organisation to carry out risk assessments to identify, manage and reduce the risk of fire within public and commercial buildings.



The CFA governs Lancashire Fire and Rescue Service, which is a designated Category 1 responder under the Civil Contingencies Act 2004. This Act requires emergency responders in England and Wales to co-operate in maintaining a public community risk register which is a product of the Lancashire Resilience Forum (LRF). The LRF gives responders the opportunity to consult, collaborate and share information with each other to facilitate planning and response to emergencies.



The CFA meets five times a year with five sub committees, which report back to the Authority, meeting separately throughout the year. The CFA makes key strategic decisions including setting the Council Tax precept, approving the budget requirement and reviewing items referred for a decision by a sub-committee.

# AIMS, PRIORITIES AND VALUES



**Our aim** is to make Lancashire safer. It's what we are here for: making Lancashire safer is our commitment to making sure that everything we do improves the safety of our diverse communities.



**Our priorities** are the areas we focus our activities and resources on. They are what we deem important to helping us achieve our aim of making Lancashire Safer and are further developed every year into specific actions which are set out in our Annual Service Plan:

- **Preventing** fires and other emergencies from happening
- **Protecting** people and property when they happen
- **Responding** to fires and other emergencies quickly and competently
- **Valuing** our people so they can focus on making Lancashire safer
- **Delivering** value for money in how we use our resources



**Our values** are the qualities that we believe are the most important to us and describe the expectations the public have of us and that we have of each other. We use them every day to influence how we work to achieve our priorities and guide the professional behaviours we expect of our staff. We strive to make Lancashire safer in a way that is guided by strong principles of:

- SERVICE** - Making Lancashire safer is the most important thing we do.
- TRUST** - We trust the people we work with.
- RESPECT** - We respect each other.
- INTEGRITY** - We do what we say we will do.
- VALUED** - We actively listen to others.
- EMPOWERED** - We contribute to decisions and improvements.



Our Service values are supported by the national Core Code of Ethics for Fire and Rescue Services in England. The code sets out five ethical principles, which provide a basis for promoting good behaviour and challenging inappropriate behaviour.

**Putting our communities first** – We put the interests of the public, the community and service users first.

**Integrity** – We act with integrity including being open, honest and consistent in everything we do.

**Dignity and respect** - Making decisions objectively based on evidence, without discrimination or bias.

**Leadership** – We are all positive role models, always demonstrating flexibility and resilient leadership. We are all accountable for everything we do and challenge all behaviour that falls short of the highest standards.

**Equality, diversity and inclusion (EDI)** – We continually recognise and promote the value of EDI both within Lancashire Fire and Rescue Service and the wider communities in which we serve. We stand against all forms of discrimination, create equal opportunities, promote equality, foster good relations and celebrate difference.

## OUR FUTURE

Lancashire Fire and Rescue Service takes a collaborative and proactive approach to planning to ensure we are well positioned to respond positively to future challenges and evolve in a way that reflects the changing risk and demand in our communities.

We are dedicated to continuous learning, locally and from across the sector, to shape our development and improve the quality of our services.

### National change

National change is influenced by political, economic, social, technological, environmental, legal and organisational factors. The key contributors driving national change include the Home Office, the National Fire Chiefs Council (NFCC), HMICFRS, the Fire Standards Board, inquests and regulations. Lancashire Fire and Rescue Service will continue to engage with stakeholders and lead improvements and innovation in our sector.

### Local change

The Service continues to adapt how we deliver our services and mitigate the risks brought about by local change. We regularly assess our immediate environment through intelligence driven reporting and working collaboratively with local stakeholders, for example community safety partnerships and the Lancashire Resilience Forum. Our resources are managed at a local level based on emerging threats and trends enabling us to adapt to changes within the built environment, new road infrastructures or the development of commercial enterprises for example.

### Collaboration and partnerships

The Policing and Crime Act 2017 places a legal duty on blue light services to collaborate efficiently and effectively. Lancashire Fire and Rescue Service has a strong history of working with others to make a real difference in local communities and will continue to explore opportunities to improve services for the people of Lancashire along with our blue light partners.

All collaborative work will be evaluated to ensure the anticipated benefits are fully realised through our established Blue Light Collaboration Board.



### Demand change

Demand changes and risk factors can be seen in more detail in our Strategic Assessment of Risk which underpins this plan.

We anticipate that we will see an increase in emergency response between 2022 and 2027 including the impacts of climate change, leading to increased levels of wildfire and flooding related emergencies. This is based on the incident types that we currently respond to, however national and local change may influence our future response arrangements. We will continue to evaluate incident volume and type to ensure our prevention, protection and response activities are resourced to risk.





# EDI

## Equality, Diversity and Inclusion

Lancashire Fire and Rescue Service is committed to valuing and understanding diversity within our communities and enabling our workforce to meet their needs through inclusive services.

## SERVING OUR DIVERSE COMMUNITIES

Making Lancashire safer requires us to work with our diverse communities to deliver services that further reduce fires and other emergencies from happening. By understanding the needs of people from different backgrounds we can support them most effectively and in ways that make a difference. Ensuring our workforce represents our communities enriches both our understanding and offering to those we serve.

We have set ourselves the following equality objectives in relation to how we work with communities:

- ▲ Reduce the number and impact of fires and other emergencies on our diverse communities across Lancashire.
- ▲ Develop and deliver a prevention service targeting our most vulnerable communities.
- ▲ Support local businesses to reduce the risk of fire and remain compliant within fire safety legislation.

## OUR DIVERSE WORKFORCE

Lancashire Fire and Rescue Service recognises that a modern fire and rescue service needs to fully reflect the communities it serves, so we aim to recruit people of different backgrounds, knowledge, skills and experience.

“The more our staff represent the communities we serve, the more we understand their needs, concerns, and risks, keeping them safe.”

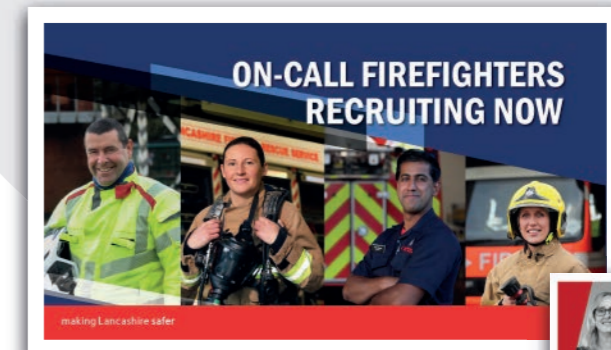
We positively strive to be an inclusive service, taking deliberate action to create an environment where everyone feels respected and able to achieve their full potential.

## We aim to achieve this by:

- ▲ Identifying and using good practice identified and promulgated through the NFCC’s EDI strategy.
- ▲ Using our EDI steering group to ensure that EDI is at the centre of everything we do.
- ▲ Engaging with employee voice sub-groups; race and religion, women and families, LGBT+ and other underrepresented groups to seek feedback to inform policy development and decision making.
- ▲ Consulting with existing staff, community members and blue light partners to identify what is seen as barriers to recruitment and progression.
- ▲ Undertaking positive action with universities and colleges to directly engage with members of underrepresented groups and promote the fire and rescue service as a career of choice.
- ▲ Engaging with and educating community members and representatives about employment opportunities within the service.
- ▲ Engaging with and educating our existing workforce about the benefits of having diversity within the service and the need for positive action.
- ▲ Delivering targeted recruitment campaigns.

Lancashire Fire and Rescue Service will continue to progress apprenticeship opportunities in line with the Public Sector Apprenticeship Targets (Amendment) Regulations 2021. This stipulates the proportion of workforces that apprentices should represent each year.

Since 2019 the service has been registered as an ‘employer provider’ for level three operational firefighter apprenticeships. We will look to maintain this status over the duration of the CRMP and continue to deliver and develop our offering while working towards an outstanding OFSTED rating.



We also commit to providing wider apprenticeship opportunities within non-operational roles as we believe offering development packages to new and existing staff benefits individuals and subsequently our organisation.

Our STRIVE values help to communicate our standards and promote an inclusive working environment where everyone can feel valued and respected, without fear of bullying, discrimination or harassment. We aim to give people equal and fair opportunities to fulfil their potential and do this by engaging and consulting with them in a variety of ways, including through our employee voice groups, to understand what it is like to work for us and how we can make improvements. Our organisational development plan sets out our approach to developing our staff and leaders, ensuring they have the required skills and competencies to meet challenges now and in the future.

We have set ourselves the following equality objectives in relation to our workforce:

1. Promote equality in our workforce policies and practices.
2. Develop our staff to ensure they can respond competently meeting the unique needs of our diverse communities.

We use equality impact assessments to ensure that we are aware of the full impact of our policies and decisions on our staff and our communities, and our activity is monitored through our EDI steering group and reported to the CFA in an annual report.

## SERVICE PLANNING

To enable the Service to operate efficiently and effectively in the short and medium to long term, we apply a wide range of planning tools for corporate, financial and people management:

- The CRMP is our medium-term plan and covers what we aim to deliver as a fire and rescue service.
- Our Annual Service Plan is a short-term plan that covers the activity we aim to deliver within a 12-month period linked to emerging risk and the CRMP deliverables.

The Workforce Plan aims to maintain staffing levels enabling us to deliver a service in line with legislation as detailed below.

Our Financial Plan is a short to medium term plan that enables us to effectively distribute our financial resources efficiently.

The Annual Service Report is an end of term report that provides a detailed account of how we have performed against the objectives set out in the Annual Service Plan.

The legislation that we consider within our planning process and must be adhered to is:

The Fire and Rescue Services Act 2004 explains how we; respond to fires and other emergencies; prevent fires and other emergencies (home and community safety); protect (commercial and public building) and educate and inform the public.

The Fire and Rescue Service (Emergencies) (England) Order 2007 places a duty on fire and rescue services (in England) to have the capability to remove chemical, biological, radiological, nuclear, and explosive contaminants from people at an emergency. There is also a duty to contain water used for decontamination for a reasonable time. Fire and rescue services must take steps to prevent or limit environmental damage when decontaminating people.

The Civil Contingencies Act 2004 explains how we work with other agencies to deal with emergencies.

The Regulatory Reform (Fire Safety) Order 2005 applies to all premises other than single private dwellings and places expectations on responsible persons to keep people in and around their premises safe from the risk of fire. The Fire Safety Act 2021 has clarified that the Order now includes the external wall systems and dwelling front doors in multi-occupied residential buildings. In 2022 fire safety legislation will be further strengthened with the introduction of the Building Safety Bill regulating both new and existing High Risk Residential Buildings (HRRBs).

The Health and Safety at Work Act 1974 is the primary piece of legislation covering occupational health and safety in Great Britain. It sets out the general duties which employers have towards employees and members of the public, to themselves and to each other.

The Fire and Rescue National Framework 2018 explains how we; identify and assess risk in Lancashire; prevent fire and other emergencies and protect buildings and people; respond to emergency incidents; collaborate with other organisations; put in place business continuity arrangements so we can deliver our services even when faced with an emergency like the pandemic; and provide national resilience when major incidents happen anywhere in the country.



# CORPORATE PLANNING

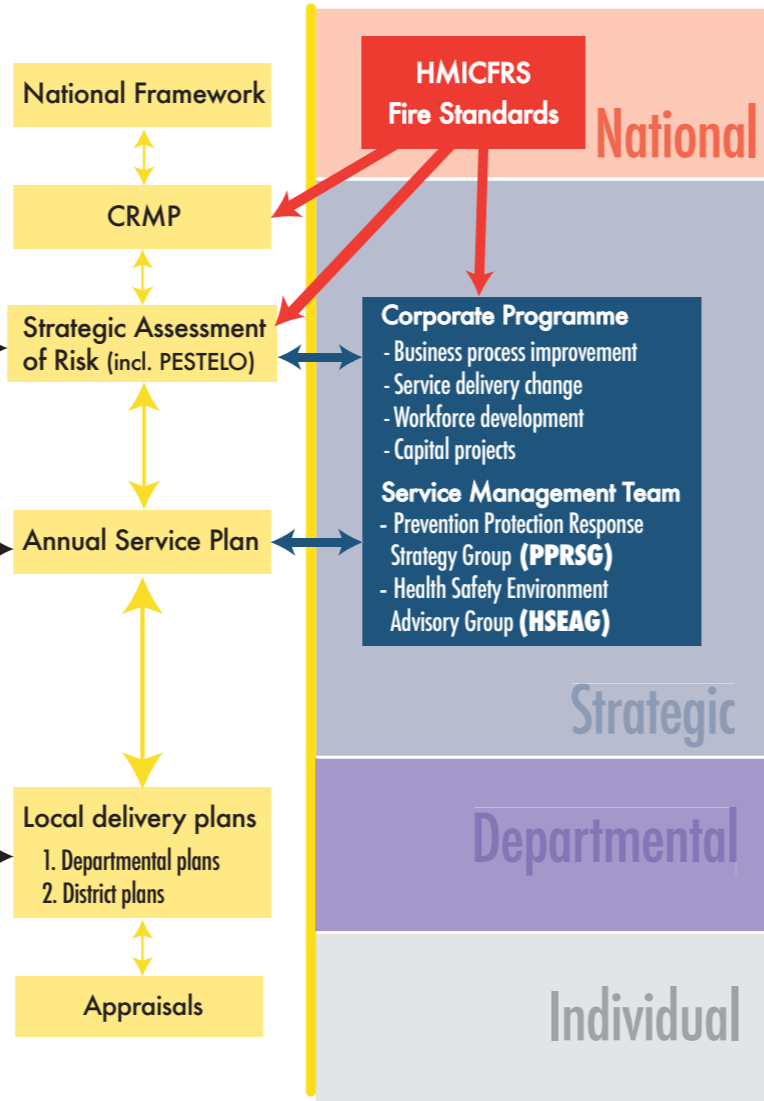
in more detail

The national framework places a statutory duty on all fire and rescue services to produce and deliver a Community Risk Management Plan (CRMP). The plan must cover at least a three-year time span and be reviewed and revised as often as is necessary to ensure that the authority is able to deliver the requirements.

- LFRS Risk assessments  
- Strategy, policy and procedure

Annual Service Report  
1. Planning  
2. Performance

Measuring Progress reports



Corporate planning at Lancashire Fire and Rescue Service follows a rigorous yet flexible process that permits the organisation to assess and respond to opportunities and threats. The process must allow for adjustments as the environment in which it operates evolves.

The planning framework is represented in the diagram above, which sets out the various sources of information which inform the planning process and the inter-dependencies between the various elements of planning strategy.

# RISK MANAGEMENT

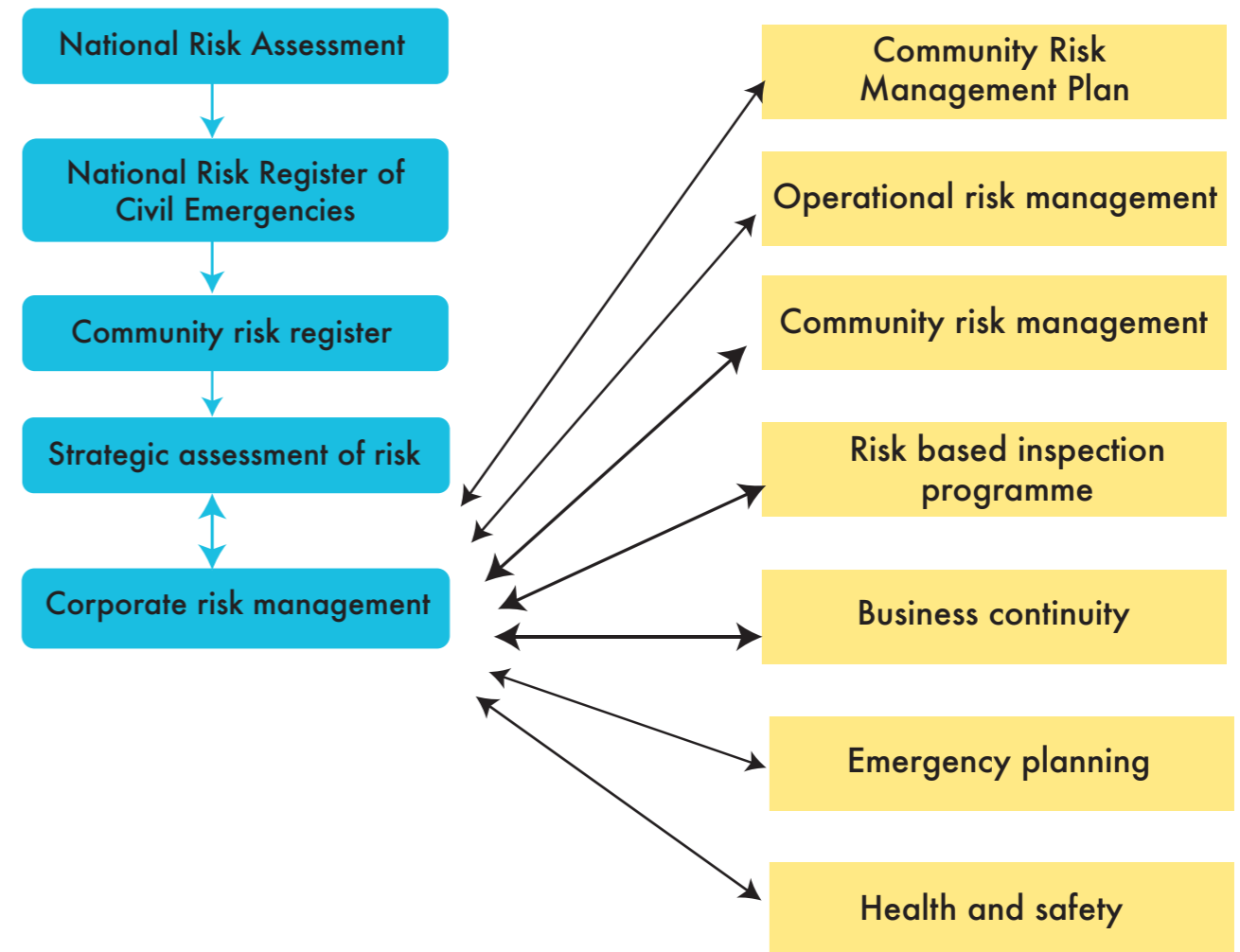
Risk management is the process of identifying, assessing and responding to risks that occur in the day-to-day management of the fire and rescue service. We will attempt to eliminate risk completely; this may not always be possible. Our aim is then to introduce further control measures to reduce risks that may be harmful to our staff, our communities, our reputation and our objectives.

# How we identify risk

To enable risk to be managed effectively, the nature of the risk must first be identified. This is done by reviewing the Service's strategic, operational, departmental and project objectives, considering both external and internal factors that influence these and identifying all significant risks which could impact upon them. The basis of risk identification within the service is PESTELO analysis which is accompanied by the Strategic Assessment of Risk.

Risk in Lancashire will always remain dynamic: it changes over time, differs by area and demographic, and needs different interventions to reduce the likelihood of the risk occurring or to lessen its consequences. We identify these risks in our Strategic Assessment of Risk which is refreshed annually and informed by the Lancashire Resilience Forum's Community Risk Register. Through our risk management framework, we continually assess changing risk and prioritise our response framework.

# Our risk management framework



## How we assess risk

Risk is calculated and assessed in several ways. Lancashire Fire and Rescue Service produces a risk map that is based upon the following formula:

$$\frac{\text{Dwelling fires}}{\text{Total dwellings}} + \left( \frac{\text{Dwelling fire casualties}}{\text{Resident population}} \times 4 \right) + \text{Building fire} + (\text{IMD} \times 2) = \text{Risk Score}$$

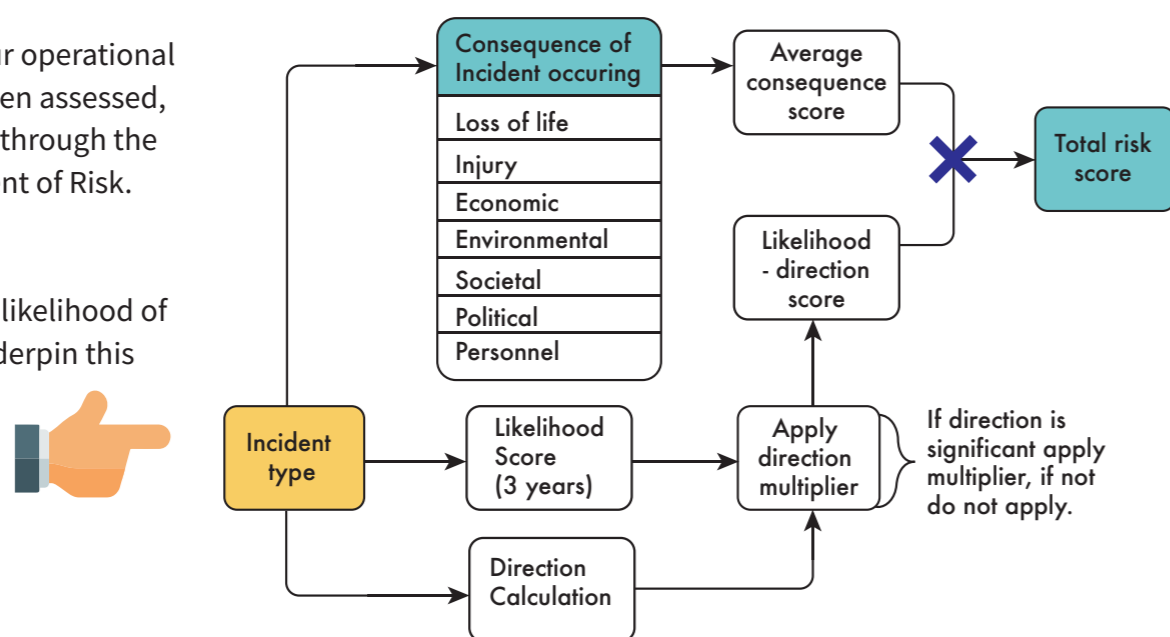
Lancashire is split into small geographic areas that are known as Lower-Level Super Output Areas (LLSOA). These each contain between 1,000 and 3,000 people and there are currently 941 of these within the county. The formula produces a risk grading of low, medium, high and very high which in turn underpins the performance criteria within our Key Performance Indicators (KPIs).

Over the last 10 years we have reduced the overall risk in Lancashire by **21%**

Fire Risk Change		2010-13		2011-14		2012-15		2013-16		2014-17		2015-18		2016-19		2017-20		2018-21	
Score	Risk Grade	Score	SOA count	Score	SOA count	Score	SOA count	Score	SOA count	Score	SOA count	Score	SOA count	Score	SOA count	Score	SOA count	Score	SOA count
Greater than 75	VH	3388	40	2714	32	3332	41	2578	32	2042	25	1850	22	1752	21	1874	23	1738	21
Between 56 & 75	H	5876	93	6040	95	5440	86	4890	76	4654	74	4598	74	4306	68	4718	74	3896	61
Between 36 & 55	M	13180	301	13208	306	12130	281	13578	314	13722	321	13654	301	13230	310	13798	324	14190	338
Less than 36	L	11784	507	11686	508	12366	533	11944	519	11980	521	12012	524	12528	542	12058	520	12038	521
Risk score		34228		33648		33268		32990		32990		32114		31816		32448		31862	
Change from baseline risk score		-16.6%		-18.0%		-18.9%		-19.6%		-21.0%		-21.7%		-22.5%		-20.9%		-22.4%	

The full range of our operational activity has also been assessed, scored and ranked through the Strategic Assessment of Risk.

The wider impacts, consequences and likelihood of these incidents underpin this assessment:



## Risk outcomes

Lancashire Fire and Rescue Service's data driven identification and assessment of risk has brought to the fore the incident types that present the greatest risks to the communities and people of Lancashire, in our Strategic Assessment of Risk (SAoR).

When an event does occur, we commit to be prepared to respond and minimise the impact caused. Through this assessment of risk, we have identified all the incident types that we are likely to encounter. Our highest risk activities have been identified and our responses, both proactive and reactive, are outlined over the page.

Our commitment to you is that we will continue to carry out a significant amount of proactive work to prevent adverse events from happening and as a result, reduce the risk to communities and our workforce.



# FLOODING AND WATER RESCUE

Wide area and localised flooding can devastate parts of the community and leave an impression for years beyond an event. Water related incidents also tragically account for a number of deaths in Lancashire each year and can incur considerable economic loss. Below are some of the measures we have in place:

Proactive

Reactive

- Maintain wading response capability, equipment and Personal Protective Equipment (PPE) across all operational stations.
- Maintain swift water rescue, flood rescue technicians and boat capability at strategic locations.
- Maintain DEFRA boat capability.
- Provide flood water incident managers (FWIMs).
- Maintain our high-volume pump and hose layer capability.
- Continue working with partners to develop multi-agency flood plans and rapid catchment flood area response plans.
- Continue to work collaboratively with key partners for training and equipment provision.
- Water safety boards (information, advice and guidance) positioned at prominent water risk sites.
- Education packages offered to all secondary schools.
- Targeted and intelligence led water safety campaigns delivered.
- Continue to engage with local businesses within high-risk flood areas to provide guidance and ensure fire safety measures are considered in business continuity planning.

- Deploy specialist water rescue resources to assist in the rescue and evacuation of those affected by flooding.
- Deploy high-volume pumps and hose layer to mitigate the impact of flooding.
- Utilise drone assets for reconnaissance and situational awareness during wide area flooding.
- Use assurance monitoring system to gather service-wide and multi-agency learning post incident.
- Report areas of notable practice or learning via national or collaborative bodies (national operational learning and joint organisational learning).
- Work with partner agencies during the emergency and recovery phase.
- Targeted prevention activities post incident.
- Provide business support to ensure safe re-opening of businesses during and post flooding events.



# WILDFIRE INCIDENTS

Wildfires can quickly escalate and spread across large areas, causing major disruption to life, environment, property and infrastructure.

Proactive

Reactive

- Maintain our initial wildfire response capability across all operational stations.
- Maintain specialist wildfire response teams at strategic locations.
- Maintain 4x4 and all-terrain vehicles and associated equipment provision and skills.
- Maintain our specialist wildfire burn team.
- Continue to develop our national wildfire tactical advisors through local, national and international support.
- Continue to develop our internal provision of wildfire tactical advisors.
- Engage with partners and land and property owners to inform, educate, and subsequently mitigate the impact wildfire has on communities through the national Firewise initiative.
- Continue to use intelligence to inform campaign activity.

- Deploy specialist wildfire resources to assist in the management of wildfire incidents.
- Deploy wildfire tactical advisors to assist in the co-ordination of wildfire incidents.
- Utilise drone assets for reconnaissance and situational awareness during wildfire incidents.
- Use assurance monitoring system to gather service-wide and multi-agency learning post incident.
- Report areas of notable practice or learning via national or collaborative bodies (national operational learning and joint organisational learning).
- Work with partner agencies during the emergency and recovery phase.
- Effective investigatory work into the cause of fire which subsequently feeds into national wildfire databases.
- Targeted prevention activities post incident.
- Utilise or support existing mutual aid arrangements.
- Provide business support to ensure safe re-opening of businesses during and post wildfire events.

# ACCIDENTAL DWELLING FIRES

Each year, we experience accidental fires in people's homes that can have a devastating effect to those who are involved and can cause significant injury and even death.



Proactive

Reactive

- Maintain a community safety module for all operational staff.
- Continue to train and assess operational competence.
- Continue to deliver externally accredited breathing apparatus, compartment fire behaviour and positive pressure ventilation trainer instructor qualifications.
- Continue to deliver fire investigation training.
- Continue to innovate and review fleet and equipment to meet the emerging needs of the built environment and to enhance firefighter safety.
- Continue to deliver a wide range of prevention packages across educational settings and identified high risk groups.
- Continue to deliver intelligence led campaigns to increase awareness and knowledge amongst owners, responsible persons and residents.
- Continue to offer business support to owners/responsible persons in relation to fire safety compliance.
- Continue to collaborate with other regulatory bodies through shared training and intelligence.
- Continue to provide trained and competent inspectors who inspect premises such as Houses of Multiple Occupancy (HMO) in line with the relevant competency framework.

- Respond to dwelling fires within the criteria of our key performance indicator.
- Respond to dwelling fires in a manner that minimises the impact on life, the environment and infrastructure.
- Continue to work effectively and efficiently in a collaborative way with other responding agencies utilising Joint Emergency Services Interoperability Principles (JESIP).
- Utilise drone assets for effective situational awareness and to support fire investigation.
- Use assurance monitoring system to gather service-wide and multi-agency learning post incident.
- Report areas of notable practice or learning via national or collaborative bodies (national operational learning and joint organisational learning).
- Targeted prevention activities post incident.
- Continue to support those affected by dwelling fires with the Fire and Emergency Support Service (FESS).
- Continue to support operational incidents to ensure fire safety compliance.
- Continue to enforce on non-compliance of fire safety legislation.
- Continue to work collaboratively to investigate the cause of fire.

# COMMERCIAL AND INDUSTRIAL BUILDING FIRES

Each year, we experience fires in commercial properties, such as the retail sector, industrial, manufacturing, hospital and educational facilities. Residential homes and student halls of residence are also included within this incident type. These incidents can have a lasting impact on people, communities, economy and local infrastructure.

Proactive

Reactive

- Continue to train and assess operational competence.
- Continue to deliver externally accredited breathing apparatus, compartment fire behaviour, and positive pressure ventilation trainer instructor qualifications.
- Continue to deliver fire investigation training.
- Continue to innovate and review fleet and equipment to meet the emerging needs of the built environment to enhance firefighter safety.
- Continue to deliver a wide range of prevention packages across educational settings and identified high risk groups.
- Continue to deliver intelligence led campaigns to increase awareness and knowledge amongst owners, responsible persons and residents.
- Continue to offer business support to owners/responsible persons in relation to fire safety compliance.
- Continue to collaborate with other regulatory bodies through shared training and intelligence.
- Continue to provide trained and competent inspectors who inspect in line with the relevant competency framework.

- Respond to commercial fires and industrial fire within the criteria of our key performance indicator.
- Respond to commercial fires and industrial fires in a manner that minimises the impact on life, the environment and infrastructure.
- Continue to work effectively and efficiently in a collaborative way with other responding agencies utilising Joint Emergency Services Interoperability Principles (JESIP).
- Utilise drone assets for effective situational awareness and to support fire investigation.
- Use assurance monitoring system to gather service-wide and multi-agency learning post incident.
- Report areas of notable practice or learning via national or collaborative bodies (national operational learning and joint organisational learning).
- Targeted prevention activities post incident.
- Continue to support those affected by fires with the Fire and Emergency Support Service (FESS).
- Continue to support operational incidents to ensure fire safety compliance.
- Continue to enforce on non-compliance of fire safety legislation.
- Continue to work collaboratively to investigate the cause of fire.



# DELIBERATE BUILDING FIRES

Each year, we experience deliberate fires in buildings that can affect those who are involved and the local community and cause severe injury and even death.

- Continue to train and assess operational competence.
- Continue to deliver externally accredited breathing apparatus, compartment fire behaviour, and positive pressure ventilation trainer instructor qualifications.
- Continue to deliver fire investigation training for both operational staff and specialist fire investigation officers.
- Continue to innovate and review fleet and equipment to meet the emerging needs of the built environment to enhance firefighter safety.
- Continue to deliver a wide range of prevention packages across educational settings and identified high risk groups.
- Continue to deliver intelligence led campaigns to increase awareness and knowledge amongst owners, responsible persons and residents.
- Continue to collaborate with partners (eg the police) to identify those at risk of arson and provide preventative advice and measures to protect against arson.
- Continue to conduct arson vulnerability assessments on commercial properties to reduce the threat and impact of deliberate fire setting.
- Continue to offer business support to owners/responsible persons in relation to fire safety compliance.
- Continue to provide trained and competent inspectors who inspect in line with the relevant competency framework.

Proactive

Reactive

- Continue to provide intervention activities to adult and child fire setters.
  - Investigate in collaboration with Lancashire Constabulary to establish the cause of fire and provide evidence that leads to successful prosecutions.
- Respond to deliberate fires within the criteria of our key performance indicator.
- Respond to deliberate fires in a manner that minimises the impact on life, the environment and infrastructure.
- Continue to work effectively and efficiently in a collaborative way with other responding agencies utilising Joint Emergency Services Interoperability Principles (JESIP).
- Utilise drone assets for effective situational awareness and to support fire investigation.
- Use assurance monitoring system to gather service-wide and multi-agency learning post incident.
- Report areas of notable practice or learning via national or collaborative bodies (national operational learning and joint organisational learning).
- Targeted prevention activities post incident.
- Continue to support those affected with the Emergency Support Service (FESS).
- Continue to support operational incidents to ensure fire safety compliance.
- Continue to enforce on non-compliance of fire safety legislation.

# ROAD TRAFFIC COLLISIONS AND VEHICLE FIRES

Death and serious injuries on Lancashire's roads because of road traffic collisions (RTCs) and road vehicle fires occur each year. They can also affect infrastructure, communities, the environment and visitors to the county.

- Maintain a response capability across all operational stations through ongoing training and the development and provision of equipment and PPE.
- Maintain our urban search and rescue and heavy rescue capability.
- Maintain our major rescue unit provision.
- Continue to deliver externally accredited road traffic collision instructor qualifications.
- Continue to deliver clinically governed trauma training.
- Continue to be an active member within the Lancashire Road Safety Partnership.
- Continue to deliver a wide range of prevention packages across educational settings and identified high risk groups.
- Continue to use intelligence to inform campaign activity.

Proactive

Reactive

- Respond to RTCs and vehicle fires in a manner that minimises the impact on life, the environment and infrastructure.
- Respond to RTCs and vehicle fires within the criteria of our key performance indicator.
- Continue to work effectively and efficiently in a collaborative way with other responding agencies utilising Joint Emergency Services Interoperability Principles (JESIP).
- Utilise drone assets for effective situational awareness and to support fire investigation.
- Use assurance monitoring system to gather service-wide and multi-agency learning post incident.
- Report areas of notable practice or learning via national or collaborative bodies (national operational learning and joint organisational learning).
- Targeted prevention activities post incident.

# RESCUES FROM COLLAPSED STRUCTURES

Or from within confined spaces

Incidents involving collapsed structures can often be life threatening to those involved, pose significant hazards to responding agencies and can cause disruption within local communities.

Proactive

Reactive

- Maintain urban search and rescue and confined space response capability.
- Maintain technical rope rescue capability.
- Maintain canine response capability to enhance our search function.
- Ongoing collaborative training with neighbouring urban search and rescue teams and other specialist response partners (eg ambulance hazardous area response teams).
- Maintain national resilience urban search and rescue training in line with national concept of operations.

- Deploy appropriate resources to meet the needs of an incident, both locally and nationally.
- Utilise drone assets for effective situational awareness and to support fire investigation.
- Use assurance monitoring system to gather service-wide and multi-agency learning post incident.
- Report areas of notable practice or learning via national or collaborative bodies (national operational learning and joint organisational learning).

Hazardous materials can present a risk to the public from a range of sources including road transport, industrial sites and malicious use by terrorist or organised criminal groups.

# HAZARDOUS MATERIALS INCIDENTS

Proactive

Reactive

- Maintain a response capability across all operational stations through ongoing training and the development and provision of equipment and PPE.
- Maintain our hazardous materials unit capability through regular and ongoing training.

- Deploy appropriate resources to meet the needs of an incident, both locally and nationally.
- Respond to hazardous materials incidents in a manner that minimises the impact on life, the environment and infrastructure.
- Continue to work effectively and efficiently in a collaborative way with other responding agencies utilising Joint

- Continue to develop our specialist, internal hazardous materials and environmental protection officers.
- Continue to collaborate with appropriate partners to mitigate the impact hazardous materials have on people, property and the environment.
- Continue to share intelligence gathered during inspections to assist in operational pre-planning.
- Continue our collaborative training with neighbouring fire and rescue services and other specialist response partners (eg ambulance hazardous area response teams).
- Continue to undertake training provided by specialist or scientific organisations.

Emergency Services Interoperability Principles (JESIP).

- Use assurance monitoring system to gather service-wide and multi-agency learning post incident.
- Report areas of notable practice or learning via national or collaborative bodies (national operational learning and joint organisational learning).
- Continue to seek advice during and after operational incidents from specialist or scientific organisations.
- Continue to report health and safety concerns to the appropriate regulatory bodies.



# ANIMAL RESCUES

With a large rural area within the county, we are inevitably called to incidents where animals are in distress, and where people often put themselves at risk.

Proactive

Reactive

- Maintain large animal rescue capability at strategic locations.
- Continue to work collaboratively with key partners for training and equipment provision.
- Maintain technical rope rescue capability.
- Continue to develop our specialist, internal large animal rescue instructors through attendance on externally provided courses.

- Deploy large animal rescue resources to assist in the rescue and evacuation of trapped animals.
- Continue to work effectively and efficiently in a collaborative way with other responding agencies utilising Joint Emergency Services Interoperability Principles (JESIP).
- Use assurance monitoring system to gather service-wide and multi-agency learning post incident.
- Report areas of notable practice or learning via national or collaborative bodies (national operational learning and joint organisational learning).



## ASSISTING OTHER AGENCIES

Lancashire Fire and Rescue Service carries out a number of activities to support other agencies, such as gaining entry to properties where there's a medical emergency and searching for missing people.

### Proactive

### Reactive

- Continue to provide specialist equipment and training that supports operational staff when attending gaining entry incidents.
- Maintain canine response capability to enhance our search function.
- Continue to deliver missing persons training to operational staff to assist in searches.
- Continue to develop our internal group of national inter-agency liaison officers.
- Continue to develop and deliver a safe and well package which addresses wider health challenges (eg falls) and refer those at risk to partner agencies.
- Respond appropriately to complaints regarding fire safety compliance.
- Continue to collaborate with other regulatory bodies through shared training and intelligence.

- Respond to requests for assistance from other agencies.
- Continually assess and review the appropriateness of the assistance we provide to other agencies.
- Continue to work effectively and efficiently in a collaborative way with other responding agencies utilising Joint Emergency Services Interoperability Principles (JESIP).
- Use assurance monitoring system to gather service-wide and multi-agency learning post incident.
- Report areas of notable practice or learning via national or collaborative bodies (national operational learning and joint organisational learning).
- Utilise drone assets for reconnaissance and situational awareness whilst providing operational support to other agencies.

## BUILDINGS UNDER CONSTRUCTION FIRES

When under construction buildings are more susceptible to fires which can have a damaging effect on people, infrastructure and local communities.

### Proactive

### Reactive

- Continue to train and assess operational competence.
- Continue to innovate and review fleet and equipment to meet the emerging needs of the built environment to enhance firefighter safety.
- Continue to conduct arson vulnerability assessments on commercial properties to reduce the threat and impact of deliberate fire setting.
- Continue to offer business support to owners/responsible persons in relation to fire safety compliance.
- Continue to collaborate with other regulatory bodies through shared training and intelligence.
- Continue to provide trained and competent inspectors who inspect in line with the relevant competency framework.
- Fire protection teams to apply the SiteSafe scheme for timber framed buildings.
- Fire protection teams to undertake planning, licensing and building regulation consultations.

- Continue to work effectively and efficiently in a collaborative way with other responding agencies utilising Joint Emergency Services Interoperability Principles (JESIP).
- Utilise drone assets for effective situational awareness and to support fire investigation.
- Use assurance monitoring system to gather service-wide and multi-agency learning post incident.
- Report areas of notable practice or learning via national or collaborative bodies (national operational learning and joint organisational learning).
- Targeted prevention activities post incident.
- Continue to support operational incidents to ensure fire safety compliance.
- Continue to enforce on non-compliance of fire safety legislation.
- Continue to work collaboratively to investigate the cause of fire.



# WASTE DISPOSAL SITE FIRES

Fires at waste disposal sites can have a significant impact on local communities, residents' health, infrastructure and the environment.

## Proactive

- Continue to collaborate with appropriate partners, particularly the Environment Agency, to mitigate the impact waste fires have on people, property and the environment.
- Maintain a waste fire tactical advisor role within the service. This role sits under national resilience and the NFCC waste group.
- Continue to share intelligence gathered during inspections to assist in operational pre-planning.
- Collaborate with the Environment Agency providing specialist advice to support them in developing fire prevention plans and issuing permits.
- Develop the waste fire tactical advisor role through continued professional development (CPD) events and shared learning.

## Reactive

- Deploy appropriate resources to meet the needs of an incident, both locally and nationally.
- Respond to hazardous materials incidents in a manner that minimises the impact on life the environment and infrastructure.
- Support the Environment Agency in enforcement where breaches of permits have been identified because of attendance at incidents.
- Maintain a national resilience role in attending incidents within Lancashire and other areas to support incident commanders at waste fire incidents.
- Continue to work effectively and efficiently in a collaborative way with other responding agencies utilising Joint Emergency Services Interoperability Principles (JESIP).
- Utilise drone assets for effective situational awareness and to support fire investigation.
- Use assurance monitoring system to gather service-wide and multi-agency learning post incident.
- Report areas of notable practice or learning via national or collaborative bodies (national operational learning and joint organisational learning).

# HIGH-RISE FIRE INCIDENTS

High-rise property incidents have the potential for severe injury and loss of life and pose significant hazards to responding agencies. Local communities, infrastructure and the economy can also be adversely affected.

## Proactive

- Train at specialist facilities utilising collaboration opportunities.
- Continue to innovate and review fleet and equipment to meet the emerging needs of the built environment to enhance firefighter safety.
- Continue to offer business support to owners/responsible persons in relation to fire safety compliance.
- Continue to use data to target our inspection activity to the highest risk premises.
- Continue to deliver intelligence led campaigns to increase awareness and knowledge amongst owners, responsible persons and residents.
- Continue to collaborate with other regulatory bodies through shared training and intelligence.
- Continue to provide trained and competent inspectors who inspect in line with the relevant competency framework.

## Reactive

- Deploy appropriate resources to meet the needs of an incident.
- Targeted prevention activities post incident.
- Continue to work effectively and efficiently in a collaborative way with other responding agencies utilising Joint Emergency Services Interoperability Principles (JESIP).
- Utilise drone assets for effective situational awareness and to support fire investigation.
- Use assurance monitoring system to gather service-wide and multi-agency learning post incident.
- Report areas of notable practice or learning via national or collaborative bodies (national operational learning and joint organisational learning).
- Continue to enforce on non-compliance of fire safety legislation.





# CORE STRATEGIES/ PLANS

## and how we direct and deliver operations

Lancashire Fire and Rescue Service demonstrates how our prevention, protection and response activities address the fire and rescue related risks we have identified in several key strategies that outline the measures in place and actions we take to make Lancashire safe.

Each strategy is periodically reviewed and evaluated to ensure we are delivering against our outlined objectives and are doing so in the most efficient and effective way. Wherever necessary, changes will be made within each strategy to ensure we operate in line with our aim, priorities and values.

In line with identified risks, our prevention strategy focuses on the following key areas:

## PREVENTION STRATEGY



**We will:**  
build on learning acquired during the pandemic and develop new innovative ways to deliver our community safety activities

- Continue to develop our operational and community safety staff in the field of fire safety regulation and hazards in the built environment, to increase the effectiveness of our business fire safety checks, risk intelligence and referrals to fire protection.
- Seek to build on learning acquired during the pandemic and develop new and innovative ways to deliver our community safety activities, ensuring the focus remains on engaging our target groups and delivering effective outcomes.
- Continue to refine our Home Fire Safety Check and Safe and Well service in line with evolving national guidance to ensure the offer remains person centred, and risk is evaluated in a manner that reflects best practice.

- Refine and expand our preferred partner register to ensure we work with a range of organisations whose service users' needs align to recognised fire risk factors.
- Identify and review opportunities for sharing data and risk intelligence with organisations who work with people who are at significant risk from fire.
- Seek to strengthen our links with Lancashire's telecare providers to collectively build and operate a domestic automatic fire alarm policy.
- Continue to act as an enabler and work with partners to reduce water risk.
- Continue to refine our core education offer and develop new products and delivery methods where the data and evidence demonstrates this is needed to help keep young people safe.
- Continue to deliver the Team programme on behalf of the Prince's Trust ensuring recruitment focusses on those who will benefit the most and community projects are aligned to mitigation of local risks.
- Explore and enable the establishment of a Lancashire Water Safety Partnership.
- Continue to develop our cadet offer in line with national guidance and expand the locations on offer in line with risk and resources.
- Ensure the investigation of crime scenes involving fire conforms to evolving regulatory requirements.
- Continue to develop how we gather and use incident intelligence to refine our prevention and campaign approaches.



# PROTECTION STRATEGY

In line with identified risks, our protection strategy focuses on the following key areas:

- Continue to develop strategic collaborations to raise fire safety awareness and improve fire safety standards in premises before inspections are undertaken.
- Use local, regional and national intelligence and learning to continually evolve and refine our protection services.
- Seek to build on the learning acquired during the pandemic and create new and innovative ways to deliver protection services, adopting digital approaches where appropriate.
- Contribute to the continual improvement of fire protection activities coordinated through the NFCC community risk programme and seek to refine our risk-based inspection programme in line with emerging national guidance.
- Review fire protection delivery arrangements to ensure inspection and consultation resources are aligned to risk and working practices are efficient and effective.
- Review fire engine attendance policy to automatic fire alarms and the associated unwanted fire signals policy.
- Continue to adopt the NFCC competency framework for fire safety regulators.

- Complete the improvement actions required by virtue of the Grenfell Inquiry.
- Adapt our regulatory services in line with the new Fire Safety Act and Building Safety Bill ensuring the availability of suitably trained and accredited staff.
- Refine our approach to business support to ensure our campaigns and associated resources meet the needs of customers as legislation and guidance continues to evolve and place greater expectations on responsible and accountable persons.
- Review primary authority scheme delivery to ensure it remains fit for purpose.



# RESPONSE STRATEGY

In line with identified risks, our response strategy focuses on the following key areas:

- Ensuring that the service has sufficient and proportionate emergency response arrangements available to respond to and manage a wide range of risks and threats, delivered through a range of local, regional and national delivery models.
- Enabling the service to achieve its priorities: preventing, protecting, responding, valuing our people and delivering value for money. Our STRIVE values are the foundation of everything we achieve.
- Supporting the creation of a positive, inclusive culture that encourages innovation and perpetual improvement. Enabling us to give the best services to our communities and be the best fire and rescue service in the UK.
- Our response strategy has been written to translate the framework of expectations laid out in relevant legislation, guidance documents and national reports into appropriate action as well as considering this plan and the three pillars of the HMICFRS inspection framework: efficiency, effectiveness and people.
- Constantly reviewing our approach to providing and deploying resources to ensure they remain flexible. Where possible, seeking to improve our response capabilities to deal with the wide range of foreseeable emergencies and risks faced by the service in an ever-evolving landscape, mitigating demand and risk.
- Continuing to prioritise this statutory requirement, ensuring that our firefighters are provided with the best training, facilities, appliances and equipment to ensure they remain as effective and efficient as possible while remaining focussed on their health, safety and wellbeing.

## OUR PEOPLE PLAN

We employ in the region of 1200 staff, with most employed in an operational capacity. As an employer our aim is to have a workforce that is professional, flexible, highly skilled and diverse. Our workforce plan identifies the strategic challenges faced by our staff and the actions we undertake to meet those challenges, ensuring we have the right number of employees with the right skills, qualifications and competencies now and in the future. We continue to improve the diversity of our workforce and our recruitment targets are supported by the delivery of positive attraction and retention activity, aimed at recruiting a workforce which is best able to meet the needs of residents and mitigate the risks they face.



We invest in the training and development of our staff and the leaders within our organisation, ensuring we have a workforce that can meet the challenges of a dynamic operating environment, and leaders who can deliver highly performing teams where all members of staff feel valued and are given the opportunity to fulfil their potential.

Since 2019 the service has been registered as an 'employer provider' for level three operational firefighter apprenticeships. We will look to maintain this status over the duration of the CRMP and continue to deliver and develop our offering while working towards an outstanding OFSTED rating.

We also commit to providing wider apprenticeship opportunities within non-operational roles as we believe offering development packages to new and existing staff benefits individuals and subsequently our organisation.

We are committed to safeguarding the health and wellbeing of our staff, creating a resilient workforce which can respond positively and effectively to diverse types of emergencies.

## OUR FINANCIAL PLAN

Strong financial risk management is evident in our medium-term financial strategy, which illustrates that we are well positioned to:

- ▲ Deliver services as outlined in this and other plans.
- ▲ Maintain future Council Tax increases at reasonable levels.
- ▲ Continue to deliver efficiencies in line with targets.
- ▲ Set a robust budget that takes account of known and anticipated pressures.
- ▲ Continue to invest in improvements in service delivery and facilities.
- ▲ Maintain an adequate level of reserves.

An anticipated four-year spending review has been delayed at the time of publishing this plan, meaning that the Authority is unable to set its financial plans with any certainty. This is compounded further by the delay in the outcome of a fair funding review, which looked to reassess the methodology under which funding is allocated to individual authorities, and the implementation of a 75% business rates retention scheme.



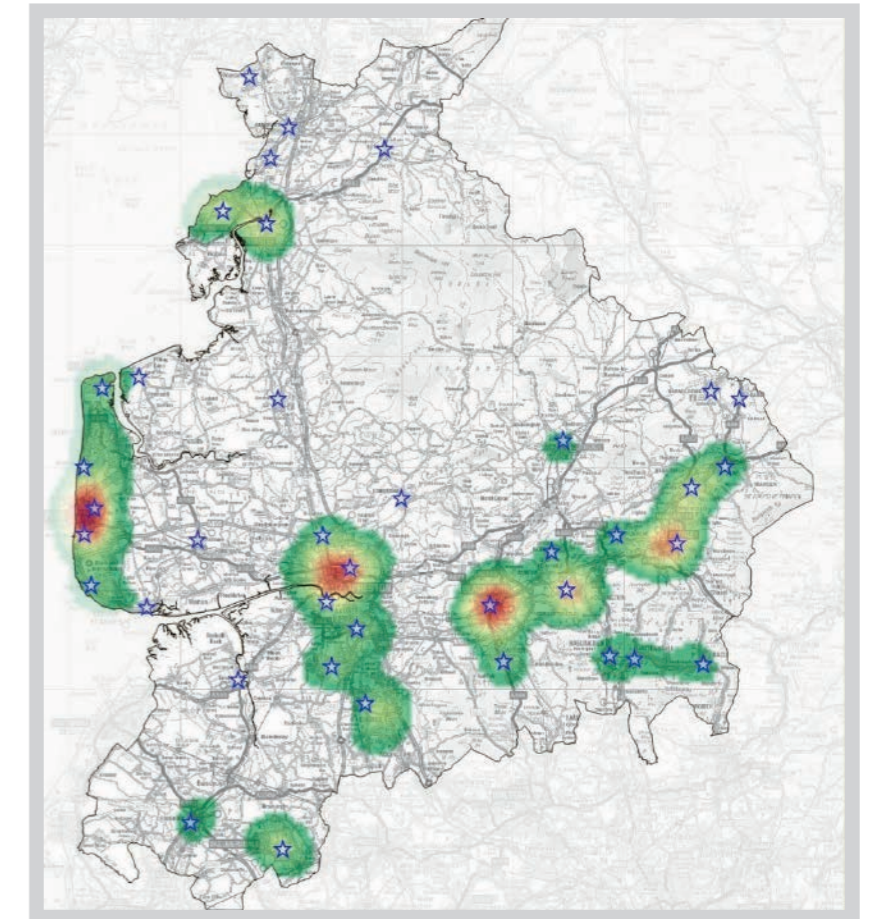
## RESOURCE TO RISK

Lancashire Fire and Rescue Service aims to allocate resources to risk, providing the most effective and efficient service and value for money to the people of Lancashire. Our offering is based around prevention, protection and response arrangements which are all tailored to current and emerging risks and applied proportionately to maintain risk at levels that are as low as reasonably practicable.

We aim to primarily prevent fires and other emergencies from happening. We allocate resources through our prevention and protection teams, supported by operational crews and partner agencies to educate, inform and advise our diverse communities.

When incidents occur, we operate a range of operational crewing systems both wholetime and on-call. This allows us to allocate resources effectively based on the risk associated with geographical areas within Lancashire. To maintain a highly trained operational provision we are supported by our service training centre, which incorporates specialist training facilities and highly skilled and accredited instructors.

The heat map shows the location of our fire stations mapped against overall incident activity levels. The areas of high activity are represented by the light green shading and moves through darker green, amber then red to display the areas of our highest demand. Many of our stations are in areas of high activity, but we also have stations where incidents levels are comparatively lower, but the impact of fires and other emergencies could be significant.





To effectively serve Lancashire and support national resilience, our trained staff utilise specialist vehicles, skills and equipment to respond to the risks we face.

Over recent years Lancashire Fire and Rescue Service has invested in developing our capabilities to respond to the ever-changing challenges we face in our risk environment. We have invested in, and built upon, our capability to respond to emerging climate change related incident types such as flooding and wildfire and developed a multi-agency drone capability and canine provision. We have continued to develop our existing offerings and specialist skills such as urban search and rescue (USAR), our specialist rope rescue team (RRT). A full breakdown of our assets and equipment can be found in our Response Strategy.

To supplement our response, we also work collaboratively with partners for support from specialist organisations such as the Environment Agency, United Utilities, Mountain Rescue and Bay Search and Rescue along with a host of National Resilience assets.

To support operations at larger incidents our flexible duty officers (FDOs) provide 24/7 cover across the county. They are also trained with a range of specialist skills to enhance our front-line capabilities and offer tactical and strategic support across a wide range of incidents such as wildfire, flooding and water, hazardous materials and environmental protection and waste fires. We also have trained National Inter-agency Liaison Officer (NILOs) who work with and co-ordinate multi agency responses.

To ensure effective delivery of our services, we resource support departments that perform non-operational functions but play a vital part in the wider Lancashire team:

- Administration and contact centre
- Corporate programme and intelligence
- Corporate communications
- Digital transformation
- Finance
- Fleet and engineering services
- Human resources
- Information and communications technology
- Occupational health
- Prevention, the Prince's Trust and youth engagement
- Procurement
- Property
- Protection delivery and support
- Response and emergency planning
- Safety, health and environment
- Stores

As a forward-thinking organisation, we commit to continue to invest in our fleet, equipment and people to mitigate the risks within Lancashire and to keep our staff and the people of Lancashire safe.

## SERVICE ASSURANCE/ OPERATIONAL ASSURANCE

To promote improvements in organisational efficiency and effectiveness, we have established an improvement and innovation department. Its objectives include organisational assurance, which actively monitors holistic service performance around preparedness, response and learning.

This department is a key driver in delivering organisational change through collective learning, both from an internal perspective and from a national viewpoint, ensuring that we remain abreast of current or topical issues that affect our ability to provide an efficient and effective service.

In terms of innovation, we will identify items of transformational change and notable practice that have been delivered through the pandemic and establish opportunities to further utilise this learning and innovation in other parts of the Service.

Additionally, we will explore opportunities and work collaboratively with key stakeholders, both internal and external, to research and develop new ways of working. The team will propagate innovation through the Service wherever possible, for example by establishing ways to utilise technology and digital platforms to improve efficiency and effectiveness, therefore reducing duplication of ineffective or inefficient processes, and identifying solutions to negate or remove them.



# KEY PERFORMANCE INDICATORS

To ensure we are effective, efficient and provide value for money, we use a range of targets to measure performance which are scrutinised under our governance arrangements. These are known as key performance indicators (KPIs).

KPIs are quantifiable measures used to evaluate success in meeting our objectives. They help to monitor and measure our performance and are scrutinised quarterly by the Lancashire Combined Fire Authority, and subsequently published in our Measuring Progress Reports, which are available on our website.

Lancashire Fire and Rescue Service also uses local indicators to monitor trends and changes in activity and risk, which help us to plan local activities and resource allocation accordingly.

## REVIEWS

Throughout this CRMP period we commit to constantly review what we do and how we do it, to ensure that we deliver the best possible services to the people of Lancashire. This involves reviewing several key areas within the Service to maintain delivery methods that are effective and efficient, value people and provide value for money. To do this we plan review periods on several deliverables, however they may be evaluated out of planned frequency should the need arise:

- Corporate risk
- Strategic Assessment of Risk
- Collation of risk information
- Emergency cover provision
- Organisational assets
- Collaborative opportunities and partnership working
- Service strategies

Should the findings of any of the above reviews be of significant magnitude, or the environment we operate within change significantly, we will also review this plan to ensure the changes are reflected within our key deliverables.





[www.lancsfirerescue.org.uk](http://www.lancsfirerescue.org.uk)