



ARROW
TAXIS

WHEELCHAIR ACCESS VEHICLES
MINI BUSES
CORPORATE ACCOUNTS
LOCAL & LONG DISTANCE
ALL MAJOR AIRPORTS
CONTACT NUMBER
01494 474764

 INFO@ARROWTAXIS.NET
 [SEARCH FOR US ON FACEBOOK](#)

Totteridge and Terriers News

T & T NEWS

THE COMMUNITY MAGAZINE FOR
TOTTERIDGE & TERRIERS

Issue 73

Autumn
2025



Terriers Community Garden in the summer. See page 23 for more news on this and how you can get involved. The garden is there for all to enjoy so do go along and spend some time in the garden that is all managed by volunteers from the church.

This is the second digital edition of T & T News edition as we are no longer an in-print magazine after 18 years. You can still read your copy on-line at: tandtnews.org.uk or subscribe by e-mail: editor@tandtnews.org.uk with "Subscribe 18+" or Subscribe under 18" in the subject line.

See inside for all your community news from Totteridge & Terriers.

The **wye** Partnership



It's our business so we care.

The Wye Partnership gained their knowledge and developed their expertise within the most successful estate agents in High Wycombe. On witnessing the take over of these long established companies by nationwide chains we recognised the need for the retention of a local and independent service. Our recent merger makes the enlarged Partnership the strongest Independent in South Bucks and The Chilterns!

All the partners have invested their own money into the Wye Residential Partnership and all truly believe that our business will be built on delivering excellent service to our clients. This means you can be confident that we will deliver on all aspects of Estate Agency in an honest, open and transparent way.

If you are looking to buy, sell or let in High Wycombe or the surrounding Chiltern villages then contact an estate agency that is motivated by your success and talk to The Wye Partnership.

wyeres.co.uk

Hazlemere
01494 711 284
hazlemere@wyeres.co.uk

High Wycombe
01494 451 300
wycombe@wyeres.co.uk

Prestwood
01494 868 000
prestwood@wyecountry.co.uk

Great Missenden
01494 868 000
missenden@wyecountry.co.uk

Naphill
01494 565 555
naphill@wyecountry.co.uk

Stokenchurch
01494 509 377
stokenchurch@wyeres.co.uk

Lettings High Wycombe
01494 358 358
lettings@wyeres.co.uk

Lettings Great Missenden
01494 864 225
lettings@wyecountry.co.uk

Associated
Park Lane Office
0203 368 8472

From Town to Country



T & T News Events Diary

Monday 25th August

Hazlemere Fete, Sir William Ramsey School Field, Rose Avenue, Hazlemere

Free admission and free car parking for this the 163rd Annual Fete. Noon to 5pm.

Sunday 19th October

Walk with Willie 'High Wycombe unmasked!' part 1. Meet at 10am

See page 17 for more details of this town walk.

Thursday 20th November

Walk with Willie 'High Wycombe unmasked!' part 2. Meet at 10am

See page 17 for more details of this town walk.

Regular Events

Every 1st Monday of the month

Inner Wheel Club, Cricket Club, London Road, High Wycombe

Contact Sue Creed on 07719 719636 (See P.13 for more information)

Every 2nd Wednesday of the month

Wycombe Wenches W.I. Meeting 7:30pm Cricket Club, London Rd, Wyc.

Monthly meeting of the W.I. See page 7 for more information and contact details.

Every 1st Thursday of the month

Terriers W.I. meeting 10:30am, Cedar Barn, Barn Lane, Hazlemere

Monthly meeting of the W.I. New members welcome. See page 9 for more info.

To find the full events diary visit our web site at: www.tandtnews.org.uk and then click on the Events Calendar tab.

Local Halls

Totteridge Community Centre, 55 Totteridge Drive, HP13 6UG

Tel: 01494 511216

St Francis Church Hall, Amersham Road, HP13 5AB Tel: 01494 462911

Totteridge Baptist Church, Hilary Road, HP13 7RA Tel: 01494 263359

St Wulstans Church Hall, Hollis Road, HP13 7UN Tel: 01494 438300

The Hive, Arnison Avenue, HP13 6DD Tel: 01494 454697

Totteridge and Terriers News

68 Windsor Drive
High Wycombe HP13 6BL

Telephone: 01494 463107
Text / Mobile: 07905 888098
E-mail: editor@tandtnews.org.uk
Web: www.tandtnews.org.uk

Web Site Hits Approx 8,000 per month



Find us on

T & T News is published four times a year in March, June, September and December. We aim to get the magazine available at the end of the month prior to issue. In order that we can achieve this deadline we need your articles and advertising as early as possible. Our deadline for the winter 2025 edition is 15th November.

We thank all our advertisers and contributors for their support. However T & T News cannot endorse any product or service contained within this magazine. You are advised to check details of all goods and services offered. All contributions are accepted in good faith and opinions expressed are not necessarily that of the editor or T & T News.

That's about it...Join us again at the end of November 2025. In the meantime you can catch up with the latest news and events on the web at: www.tandtnews.org.uk

Index to Advertisers

Applicant Mortgage Brokers	p.16	Crystal Property Maintenance	p.4
Amanda Passmore Counselling	p.26	David Winterburn M&M	p.12
Arrow Taxis	p.32	DJ Coles Property Services	p.10
Arnold Funeral Service	p.3	Kitchen Appliances	p.12
Atlas	p.4	Read Easy	p.14
Cedar Barn & Stables	p.14	The Wye Partnership	p.2
Come Dance With Me	p.12		

2025 Advertising Rates (Introductory - Digital Edition):

Mini Ad £6 / £12 Quarter Page / £20 Half Page / Full Page £35 (Full colour)

Discounted rates are available for annual pre-paid (4 issues)
(Winter 2025 deadline is 20th November)

WELCOME TO T&T NEWS AUTUMN 2025

INSIDE THIS ISSUE:

<i>South Bucks Hospice</i>	5
<i>Terriers W.I.</i>	9
<i>Girlguiding</i>	11
<i>Inner Wheel Club</i>	13
<i>Chameleon Singles Group</i>	15
<i>Emma Reynolds MP</i>	19
<i>Faith Group News</i>	20
<i>Emma Reynolds MP</i>	25
<i>Sports—Totteridge FC & Cycling</i>	28 & 29
<i>Events Diary</i>	31

Hello,

Welcome to the Autumn 2025 edition of T & T News.

This edition marks our second digital only magazine. I'd like to take the opportunity to thank all our readers, contributors and advertisers for their support during this transition. Also thanks must go to all those who over 18 years helped distribute the printed magazine and support us by playing the Buckinghamshire Lottery to help fund us.

This summer we have been lucky enough to get a £500 grant from Mid-Counties Coop to help us launch and innovate in the digital world. Early figures from the web site show a large increase in visitors beyond what was expected so thanks for making this possible. One month over summer had around 8,000 visits and this shows readership of the community magazine has risen since we moved to digital production.

The new Flipbook format provided by Heyzine is proving popular as you can read T & T News just like a printed magazine on your computer, tablet, phone or other device.

Inside is all your news from our regular contributors and more. Don't forget to visit our stall at the Hazlemere Fete.

David Winterburn, Editor

High Wycombe
891 London Road
Tel: 01494 472572

Beaconsfield
32 Gregories Road
Tel: 01494 685000

Head Office
Blackwell Heath
24 White Pit Lane
Tel: 01494 952288

Marlow
21-23 Little Marlow Road
Tel: 01628 898866

Gerrards Cross
38 Oak End Way
Tel: 01753 891892

Farnham Common
4 The Broadway
Tel: 01753 535556



ARNOLD FUNERAL SERVICE

INDEPENDENT FAMILY FUNERAL DIRECTORS

6 Generations of Service in the Community

Local Direct Cremation Available

Traditional, Alternative & Green Funerals – Pre-Payment Plans – Stonemasonry – Floristry

24 Hour Service
www.arnold-funerals.co.uk




Midcounties Co-operative grant boosts digital distribution for T & T News

Supporting the Local Community

The Doing Good Together Fund is designed to empower local Midcounties Co-op site managers, allowing them to direct funds to causes that matter most in their communities.

Connor Oliver, Manager of the Hazelmere Co-op food site expressed pride in supporting such an important group that through its work, keeps the community connected and said -

“I am pleased that our Doing Good Together Fund can provide a helping hand for this group to expand its reach in our local community via their newspaper, it’s great to see how the fund can really make a difference.”

The Midcounties Co-operative’s continued commitment to community support demonstrates how Co-op members’ contributions directly benefit local causes.



Cycling in South Buckinghamshire

Join your local Cycling UK groups this autumn

Cycling UK has a number of local groups in South Buckinghamshire.

South Bucks Midweek group offers a selection of rides every Wednesday from easy paced to moderate to rides that are faster and longer. Most rides meet at 09:30am and include a stop for elevenses at a local café or garden centre followed by lunch before returning home. There are also coffee Pots on Friday's. Make your own way there, meet from 10:30am and enjoy the company and cycling.

Chiltern Cycling offers both led rides and coffee pots every Sunday. There are a variety of different length rides along with coffee stops all taking place on quiet routes in the countryside. Summer means we can enjoy rides with coffee stops offering both inside and outside space with most rides returning to the start point. Chiltern Cycling have a Zoom social on the 1st Thursday of each month at 8pm and a meet up clubroom at Little Kingshill Baptist Church Hall on the 3rd Thursday except June—Summer BBQ on 26th. There are no clubrooms July or August but Zoom socials continue all year.

There is something for everyone of all ages with both pedal bikes and e-bikers welcome.

Why not come and join while the sun shines (Well usually!) you would be very welcome!

For more Information:

E-mail: publicity@southbuckscycling.org.uk

Web: www.southbucksmidweekcycling.org (Midweek Group)

Web: www.southbuckscycling.org.uk (Chiltern Group)

For general information about Cycling UK visit: www.cyclinguk.org



TOTTERIDGE FC has provided football to the local youth in the community since 1996. For more information and contact details please visit our web site – www.totteridgefc.co.uk

YOUR LOCAL COMMUNITY FOOTBALL TEAM!

And update from the Chairman, Oliver Witney

LOOKING FORWARD TO NEXT SEASON.....

For the 2025-26 season we would like to continue expanding the club, as we will be losing the U18s to adult football. We are also looking for some new volunteers to come and join us to help develop the next group of Totteridge Football Club players! We will be starting an U9s, U10s and U12s team to continue offering local football. If any players (as of 2024/25) are in Years 3, 4, 5 or 6 and interested in playing club football then please get in touch.

We are also really keen for any volunteers or local sponsorship. If you are interested in anything that may help our club provide fun, club football in the local area then please get in touch.

If you are interested in joining, either as a player or volunteer, please contact myself, Oliver Witney on 07706 888441.

SMC Under 5s/6s/7s/8s – Olly	07706 888441
Under 10-11s – Olly	07706 888441
Under 12s – Dean	07961 666394 (SQUAD FULL)
Under 13s – Rohan	07576 135321 (SQUAD FULL)
Under 14s – Will	07707 61753
Under 15s – Jon	07723 314419 (SQUAD FULL)
Under 18s – Tak	07838 579217 (SQUAD FULL)



Meet Zoe, lead palliative care nurse at South Bucks Hospice

Zoe Berkeley says becoming a nurse is the best move she ever made – even though she previously ran a thriving cake shop and was the author of an acclaimed cookbook. Zoe, 43, the new Lead Palliative Care Nurse at South Bucks Hospice, says people are often shocked when she tells them of her past, and they question why she changed careers in her mid-30s.



Read more: <https://sbh.org.uk/news>

There are several events coming up to support South Bucks Hospice, please join if you can:

- There's a free **coffee morning** on the **first Friday of every month** at Butterfly House for our whole community – just pop in between 10am-12pm, we would love to say 'hello'.

South Bucks Hospice's next annual **Life Planning Seminar** will take place on **Wednesday October 1, 1-3pm**. The event is free to South Bucks Hospice patients and their families. £5 for non-patients. Tickets and info at: www.sbh.org.uk/emotional-support.

Speen Helping Hospices are organising a **comedy night** on **Saturday, October 11 from 7pm**. Tickets are £20; <https://shh-shop.org/>.

Save the date - Light up a Life remembrance event will take place on **22nd November** this year. This event is a chance for the local community to join together and remember loved ones.

Planned merger with Florence Nightingale Hospice Charity

Since the announcement in June as well as the official legal, due diligence and planning activity taking place, staff from both hospices have been getting to know each other better. More information will be shared as the planned merger progresses.



Are you retired or about to retire from the NHS or social care?...

...Want to keep up with your friends and make new friends with other NHS and social care staff and enjoy a variety of additional benefits and offers? Then the NHS Retirement Fellowship may be for you!

The Fellowship provides social, educational and welfare opportunities across the country with a number of additional, specially tailored benefits.

You can find out more by:

Tel: **01305 361 317**

Email: **info@nhsrf.org.uk**

Or visit our website at:

www.nhsrf.org.uk

Local branches run across the country providing a range of additional social activities including trips out, theatre visits, talks with interesting local speakers.

Search for
NHS Retirement Fellowship
or follow us on Twitter
@NHSRetire

You can find out more about
your local branch:

Wycombe and Amersham

We meet at Holmer Green Village Centre on the second Wednesday of the month. 1.30 – 4.00pm

Annual membership £30, plus £2.50 on the door.

Contact: joykay1944@gmail.com

07931307598 or

cooperjac@hotmail.co.uk 01494488468

Facebook: NHS Retirement Fellowship
Wycombe and Amersham Branch

NHS Retirement Fellowship
Making your retirement work for you.



Household Waste and Recycling Centres Score top marks for customer satisfaction

Buckinghamshire's 10 Household Recycling Centres (HRCs) have once again achieved outstanding customer satisfaction ratings, with over 98% of users expressing overall satisfaction in the latest Customer Satisfaction Survey. Conducted with more than 2,500 regular site users, the survey provides valuable insights into how well the facilities are meeting the needs of local residents. The results reflect an ongoing commitment to delivering efficient, accessible, and environmentally responsible waste services.

Key highlights from the survey:

- Overall satisfaction: 98% of respondents reported being satisfied with the HRCs, with 53% stating they were very satisfied and 45% satisfied.
- Site layout and cleanliness: The layout of containers and overall site tidiness received near-perfect scores, with 98% satisfaction.
- Efficiency: 57% of visitors experienced no queuing, and 83% of visitors took less than 10 minutes to unload their vehicle – demonstrating the smooth and efficient operation of the sites.

E-permit system for DIY waste:

60% of users requiring an e-permit applied in advance.

94% expressed satisfaction with the e-permit system, including the recently introduced DIY waste permit.

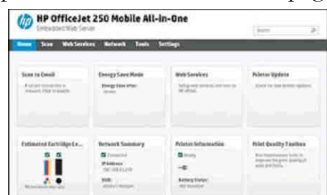
Carl Jackson, Buckinghamshire Council's Cabinet Member for Environment, Climate Change and Waste, said: "These excellent results highlight the continued popularity and effectiveness of our household recycling centres. They reflect our dedication to providing convenient and sustainable waste disposal options for residents. We greatly value customer feedback, which helps us maintain high standards and drive ongoing improvements."

Reuse scheme success

The survey also explored awareness of the reuse facilities at Aston Clinton and High Wycombe. These shops, operated by South Bucks Hospice, collect reusable items from all 10 sites for resale, helping to divert waste and support hospice care.



If the web browser asks if you are sure, click on Allow or Continue. You should get the printer's built-in status web page, like this:



The appearance of this page is a good sign. It confirms that the network connection from the device you are using, through the router/modem, to the printer, is working.

This doesn't always mean that printing over the network will work. There might be something else you need to do -- but it's an excellent first troubleshooting step. That's why I wanted to share it with you. Did this help? Let me know!

Phil Jones

--

Phil Jones Computers Ltd

07904 125648

phil@pjc.me.uk

www.pjc.me.uk

7 Bridgestone Drive, Bourne End, Bucks SL8 5XG

Online & Telephone Counselling

Short and long term to improve your mental and emotional well-being.

Would you like to speak to a qualified counsellor who will listen and support you on your journey?

Call Amanda on **07913 872701**
or

Email: amandapassmorecounselling@gmail.com



Part-Time Bookkeeper Required

The estate management company is looking for a Part-Time Bookkeeper to manage its accounts and annual invoicing.

The job includes:

- Input of receipts
- Payment of invoices
- Preparing annual invoice packs
- Chasing Payments
- Preparation for our Accountants

The work can be done home based and requires around 100 hours per year. Around 3-5 hours per month with more at the year end in June/July.

Call/Text **07762 003055**



Wycombe Wenches W.I.



Wycombe Wenches continue to welcome women who like to share the company of others for a variety of interesting activities, both evening and daytime. The Culture Club went to the Swan to see "Death Comes To Pemberley" and the Film Club met monthly to discuss films including "What We Did On Our Holidays", "Gosford Park", "Allelujah" and "Red Dust". Bookworms continues to meet at Hughenden Community Café for a lunch, and chat about the month's chosen book, with the summer range of books including "Pompeii" and "Frankie". The Walking Group have had some lovely summer walks, and the Monday morning Coffee and Chat has met once a month for – coffee and chat! Winers and Diners continued to go out for a meal once a month, to places such as Giggling Squid in Marlow and the Black Lion in Naphill. Sadly we had to say goodbye to one of our founding members, who passed away suddenly, but a group of us were able to get to her celebration of life party.

Our programme of speakers continued in July with a very informative speaker from the Advanced School of Motoring, who gave us details of how we could improve our driving and some of the common mistakes that even experienced drivers can make, and this was followed by a lively discussion. August saw us hold our summer social evening, where 21 of us descended on The Mayflower pub in Hazlemere to enjoy an excellent meal and a chance to get to know each other better. In September we had a touch of history, learning about the Saunderton Bomb.

Our summer tea and cake afternoons have remained popular with our members, and several different venues were offered this year, so it was lovely to enjoy each other's company and eat some incredibly delicious cakes and scones!

We were also extremely pleased to congratulate our Quiz Team – having come third (for the second year running) in the Buckinghamshire competition, they went forward to the Inter-County final, where they managed the magnificent goal of winning the competition, with a final score some way ahead of the other teams! Well done ladies – a brilliant achievement!



Devising non-alcoholic cocktails



Chair yoga



Afternoon tea party

If you are interested in joining our friendly group, please contact us via the email address below. We meet on the second Wednesday of each month, at the Cricket Club on London Road, High Wycombe, at 7.30pm.

Best wishes
Diane Haylor
President

vycombewencheswi@hotmail.co.uk

The 163rd Hazlemere Fete
25th August 2025 Bank Holiday Monday
Sir William Ramsay School Field
Rose Avenue, Hazlemere, HP15 7UB
12 noon - 5pm
Admission and Parking Free

Activities include:
 Dog Agility Display
 Fun Dog Show
 Meet The Alpacas
 Pony Walks
 Birds of Prey
 Kevin Taylor & Friends
 "After The Rain" Band
 Classic Cars
 Bars & Many Food Choices
 Tea, Coffee & Ice Cream
 Inflatables
 Fairground Rides
 Beat The Keeper
 Craft Fair
 Stormtroopers
 Numerous Side Shows

All enquiries, stall bookings and advertising to
 Tel: 01494 813000 Email: penn.consult@btinternet.com

Computing & Technology

Phil Jones looks at connecting printers.....

One of the frustrating things about printers connected to a home network through a router/modem is, how do you know that the laptop, PC, phone or tablet you are using can see that the printer is there on the network?

This assumes that the device you are using and the printer are both connected to the same router/modem with the same wireless network name or with Ethernet network cables.

1. Find the printer's IP address. IP stands for Internetworking Protocol. In some Canon printers, the IP address you want is called the IPv4 address.

The IP address is usually given to the printer automatically by the router/modem.

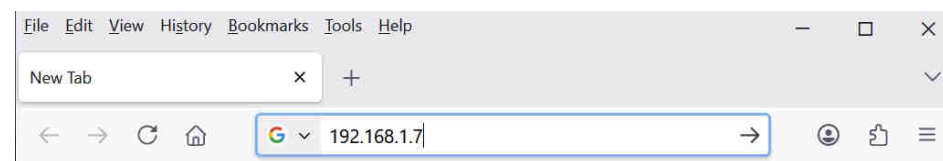
How you find what IP address the printer has, depends upon which printer it is.

The IP address you are looking for consists of four numbers between 0 and 254 separated by dots, where the first number is 192 or 10. For example, here's what the screen of an HP printer might look like given the IP address 192.168.1.7:



2. On the laptop, PC, phone or tablet you are using, start the web browser e.g. Mozilla Firefox, Apple Safari, Google Chrome or Microsoft Edge.

3. Type the printer's IP address into the Location bar of the web browser and then press the Enter key on the keyboard, like this:



Memory Partners Charity

The spring edition of T&T News gave details of our tai chi cafés in Totteridge and Beaconsfield. In our aim to spread the benefits of tai chi for health and wellbeing more widely we are proud to announce that last month we were able to run a training workshop to produce new instructors. The cost of doing so was covered by donations from the café with support from the community centre.

For more information contact
Sue 01494 532088
susanstuart922@gmail.com

Tai Chi Café
Thursday's 10:50am
Totteridge Community
Centre



www.buckinghamshirelottery.co.uk & search for T&T News
£1 Per ticket. Players must be 18 or over. Always gamble responsibly.

Terriers W.I.

June - Our speaker David Dennis spoke to us on his many years travelling around Africa, taking photographs of the wild animals. This then led him to an interest in the conservation work done by Charities and African Governments to save endangered species. They have worked on projects to stop poaching and over farming of land that is destroying the natural habitats for many of the endanger species. They have also worked with local villagers to help them to protect their homes and farms. Farmers who have problems with elephants destroying their crops now put bee hives round their fields as elephants do not like bees, also chilli pepper will also deter elephants from eating their crops. David also explained how many animals have evolved over the centuries and have adapted to the climate changes and how they protect themselves from predators. The morning ended with tea and Cakes

We also held a successful Coffee morning at a member's home in Naphill

July – We always hold our garden party in July; this year it was held at our president home in Terriers.



August – We had a picnic in the park at Great Kingshill common, the grandson of one of our members played a selection of favourite tunes on his saxophone while we enjoyed our picnics.



Future Meetings

4th September – Kilimanjaro

2nd October – Wildlife Photography

6th November – Electroscope to the Swan Theatre

4th December – Christmas Party

Meeting starts 10.30 am Doors open at 10.15 Cedar Barn, Barn Lane, Hazelmere HP15 7BQ on the first Thursday of every month except August, plenty of on-site parking. More information on <http://www.terrierswi.org.uk>



In our Community Garden at Terriers we are hoping for a sunny year because the Laurel Tree had to be cut down giving us far more light and at the moment the sun is blazing down with hints of rain. Our water butts are all full and we have been expecting a water ban. The new ponds are thriving and the plants that Amelia put in before Summer started, are growing well. There has been a wonderful display of sweet peas which we had planted into the ground by the new fencing and we have had bunches of them each weekend to give away. We had a bumper crop of Red and White onions and garlics at the beginning of the season too.

The tomatoes which are outside in raised beds have just begun to turn red and we are hoping we don't get any blight this year. Our experimental bed of Sweet Corn has grown tremendously but the cobs are not so large. Courgettes are popping up each day so no problems there, and we are hoping for at least one pumpkin and various squashes to be ready for Harvest Time. The Nature Trail has had a good weed and looks like it might need another after the blackberries have finished. We are hoping to get some bulbs and forest plants up there for next spring.

As usual we are desperate for Volunteers. Some have visited the garden and done a little weeding and watering, they come with their children to let them water the plants too. We had fun one morning with the hose set on mist and two little ones hosing themselves and the plants while it has been hot. This weekend we will be joined with extra volunteers from Paula and her own helpers (paula@growtogetherbucks.co.uk) who we hope will help us to repaint our shed and other garden jobs.

So again we would make everyone welcome who comes to our garden to help us. If you are waiting for an allotment or feel you need something that is healthy and takes your mind off your worries, come and join us.

We are Valerie, Jane, Pauline, and occasionally Amelia. We meet Thursday and Saturday mornings from 10.00. Come down and have a sit, it is a quiet spot in this mad world. We are at the back of St Francis Church, Amersham Road, HP13 5AB. Contact Valerie on 01494 473128 and leave a message or email Valerie.stringer@icloud.com



Professional High Standard

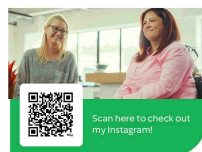
Established in 1999

- Interior & Exterior Decorating
- Paper Hanging
- Coving
- Carpentry & Kitchen Installations
- Laminate Flooring
- Door Hanging
- General Property Maintenance & Improvements

Free Estimates
Competitive Rates

Mobile: 07747 783015

Email: djcolespropmain@yahoo.com



Advisor name: Kasia Keown
Telephone: 07907570687
Email: Thermomix.K.Keown@outlook.com

Vorwerk.co.uk

thermomix
reborn

@Thermomixukandire



LIGHTBULB CAFE

The Lightbulb Café is a warm and welcoming space, designed to support individuals experiencing memory changes or living with a dementia diagnosis and their carers.

Hosted by Wycombe Wanderers Foundation, this programme offers a safe and comfortable space where you can:

- Connect with Others - Engage in Reminiscence Activities -**
- Promote Well-being - Separate Carer Support**

Join us in a friendly environment where everyone is welcomed, valued, and supported.

Every 1st Wednesday of the month
10:30-12pm

Held at Adams Park Stadium, Hillbottom Road, High Wycombe, HP12 4HJ

To book and to question please call or email the office on details below

01494 455736

COMMUNITY@WWFC.COM

WYCOMBEWANDERERSFOUNDATION.CO.UK



Rainbows, Brownies, and Guides are looking forward to Autumn

Rainbows, Brownies and Guides in High Wycombe have been busy this Spring and are now looking forward to the summer.

There are 4 different age groups of girls in Girlguiding : Rainbows aged 4-7, Brownies aged 7-10 , Guides aged 10-14 and Rangers aged 14-18

We always love to welcome new members so if you are interested in your daughter joining one of the units, please register your interest using the link below.

You will be able to see the units in the area and find out where they meet. Once you have registered your daughter, one of the local leaders will then contact you with more information.

<https://www.girlguiding.org.uk/information-for-parents/register-a-child/>

If you would like to find out more information about helping or becoming a leader, please follow the link below.

<https://www.girlguiding.org.uk/get-involved/become-a-volunteer/>

You will be able to register your interest and then one of our local volunteers will contact you.

Update on local pubs.....

In the last edition of T & T News we reported that the Beech Tree Pub had once again closed. We are pleased to report that this has now re-opened under new management and is currently serving drinks and snacks only. It is expected that a food service will be re-introduced in the near future.

Unfortunately the same cannot be said for the White Lion at Cryers Hill which remains closed with no visible works taking place on the building.



**Eovolt City
Bike 16"
Wheel Single
Speed E-Bike**

Fully legal specification with cadence sensor & speed limiter to 15.5mph. Battery is contained in seat tube with rear motor. Rides well and is great for those town and shopping trips. Maximum mileage on full charge is 30 miles assisted.

FOR SALE £495.00 ONO

Call David on 01494 463107

Property Maintenance Services
For a reliable and quality based service

- ❖ Carpentry
- ❖ Roofing Repairs
- ❖ Internal Doors Supplied and Fitted
- ❖ UPVC Facias & Soffits
- ❖ UPVC Windows & Doors
- ❖ Replacement Blown Glazing Units
- ❖ Garden Decking
- ❖ Internal/External Decorating
- ❖ Gutter Cleaning/Repair/Replace
- ❖ Shed Roof Felting & Shed Bases
- ❖ Fencing & Gates Supplied/Installed



Crystal Property Maintenance
email: ash.craven@gmail.com
Telephone: 07742 022987

One Can Trust—What to do if you need help

One Can Trust food bank works on a referral system from partners such as the Helping Hand team at Buckinghamshire Council, Wycombe Women's Aid and Citizens Advice Bureau.

Tel: 01494 512 277

E-mail: office@onecantrust.org.uk

WADSAD Wycombe and District Sports Association

Wadsad is based at the Wycombe Leisure Centre. We offer people of all types of disability a chance to take part in sport. For more information on becoming a member or Helping contact - Sarah Wiltshire 01494 450169 or Rachel Pope 01753 889390.

Come Dancing With Me

Regular classes
return soon
for
Beginners
and Intermediates



Latin
&
Ballroom
+
First Dances

Reserve your place now for the new groups

0787 353 8709

comedancingwithme.co.uk

**David Winterburn
Marketing & Media**

In-house newsletters,
Local promotional work
Flyers for the small business
RSL Radio service management
Training and Production

Tel: 01494 – 463107
dwinterburn.fm@tiscali.co.uk

Local Faith Group information for Totteridge & Terriers



St Francis Church

Located on Amersham Road in Terriers. www.terrierschurch.org.uk

Our services are held every Sunday at 8am and 10am and on Wednesday at 10:30am

Office email: churchoffice@terrierschurch.org.uk

Tel: 01494 297933 Office Tel: 01494 462911

Facebook: Friends of St Francis Terriers

Totteridge Baptist Church

Located on Hillary Road, High Wycombe, HP13 7RA. Services are held every Sunday at 10:30am - All are very welcome

Tel: 07760 651953

E-mail: totteridgebc.secretary@gmail.com

Web: totteridgebaptist.org.uk

Facebook: facebook.com/totteridgebaptist.church

Instagram: totteridgebaptist

St Andrews Church (C of E)

Located on Hatters Lane, High Wycombe HP13 7NJ.

Services are every Sunday at 10:15am.

Tel: 01494 - 529668

St Wulstans Catholic Church

Located on Hollis Road, Totteridge, HP13 7UN

Regular Masses both on Sundays and at other times during the week.

Tel: 01494 - 472576

St Augustine's Church (Catholic)

Located on Amersham Hill, High Wycombe

There are regular Masses on Saturdays, Sundays and during the week.

Tel: 01494 - 523969

Totteridge Mosque

(Wycombe Islamic & Mosque Trust Limited)

24 Totteridge Road, High Wycombe, HP13 6EB Tel: 01494 - 513440

Also Muslim Education Centre at 4 The Parade, Totteridge Drive

Tel: 01494 - 522786

Wise (Wycombe Islamic Society)

St Marks Close, High Wycombe, HP13 6GN

Tel: 01494 - 259194

Web: www.wise-web.org



Wycombe Sound is your local community radio station broadcasting on 106.6FM and also via the internet and Radio Player.

The station offers a mix of music along with specialists shows and local news and interviews.

Listen in 24 hours a day, 7 days a week.

Web: wycso.org.uk

E-mail: studio@wycombesound.org.uk

Tel: 01494 449900

Wycombe Community Advice Hub

A one-stop drop in advice shop will be held on the last Wednesday of every month between 9:30am and 12pm and offers advice from a number of organisations. It will be located at the Beacon (formerly Lata Lata) in the underpass in between Bucks New University and the town centre.

Organisations supporting this include Citizens Advice Bucks, Buckinghamshire Council, Buckinghamshire Family Information Service, One Can Trust, Women's Aid, The Oasis Partnership and HSBC.

Chiltern Stroke Club

Had a stroke? or a family member had a stroke?

Come along and join us Tuesdays 2pm-4pm
in Brooks Lounge, Amersham Road, Hazlemere

We are a local network of The Stroke Association; support and social group for stroke survivors and their families. Weekly exercise led by a qualified rehabilitation teacher, specialist speakers and social activities.

Contact: Adele 01494 728537

E-Mail: grassadele@gmail.com

www.chilternstrokeclub.co.uk



Volunteers
needed in
Aylesbury

Our team needs your help:



Loading audiobooks
onto USB sticks



Processing returned
audiobooks



Chatting and eating
biscuits

SCAN ME



01296 432339
calibreaudio.org.uk




Need free help with reading?
tel: 01494 926171

www.readeasy.org.uk/groups/chilterns/
Read Easy Chilterns - Registered Charity No. 1201262



Hire Cedar Barn or The Stables Hazlemere

Converted Barn and The Stables



Each room holds 60 people

Suitable for meetings, parties and fitness groups etc

Cost: £19 per hour Cedar Barn

Cost: £15 per hour The Stables

Please call Rachel on 01494 715548 or 07594 649548

email bookings@hazlemereparishcouncil.gov.uk

or visit www.hazlemereparishcouncil.gov.uk

Emma Reynolds MP



If you're a regular on the Chiltern line, you'll be pleased to hear that Chiltern Railways is set to replace its ageing 47-year-old carriages with 13 brand-new trains, complete with upgraded facilities for passengers. The first of these will roll out from early 2026. I've worked closely with Chiltern

Railways and Transport Secretary, Heidi Alexander, to help make this happen. As someone who commutes regularly, I know just how much this will mean to local commuters.

South Bucks Hospice will receive £57,314 from the Department of Health and Social Care, part of a £75 million national package to support hospices across the country. South Bucks Hospice does extraordinary work supporting people with life-limiting conditions and their families. It's a vital part of our community, and this investment will help it continue to offer the care and compassion that so many rely on. It also marks another step in delivering the government's Plan for Change, improving care in the community where people need it most.

I joined families, carers, and councillors at Burnham Short Breaks Centre to oppose Buckinghamshire Council's proposal to close this and other essential services for adults with disabilities. Centres like Burnham and Seeleys House, where I spent time earlier this year, provide crucial respite and support for some of our most vulnerable residents and their families. I hear regularly from Wycombe families about how vital these services are, and I'll continue to stand with them to protect what matters.

Over summer I joined Thames Valley Police for their 'Walk for Women'—a powerful opportunity to discuss how we can make our community safer for every woman and girl. I'm proud to be part of a government committed to real change with our bold mission to halve violence against women and girls within the next decade.

It's been a pleasure meeting constituents at my recent advice surgeries and hearing directly about the issues that matter most. If there's anything my team or I can support you with, please don't hesitate to get in touch at emma.reynolds.mp@parliament.uk



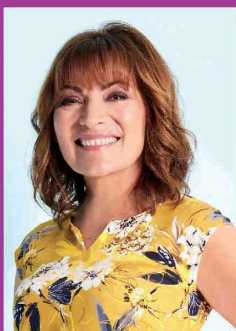
Latest news from Scannappeal, proud to support Bucks NHS hospitals.

Mobile Breast Screening Appeal reaches £100,000 milestone

We are thrilled to announce that the Mobile Breast Screening Appeal has now raised £100,000 since its launch just seven months ago in October 2024, in partnership with Buckinghamshire Healthcare NHS Trust Charitable Funds. This remarkable achievement brings us significantly closer to our goal of providing a new, fully equipped, state-of-the-art mobile mammography screening unit for South Buckinghamshire. We extend our sincere thanks to everyone who has contributed to this important life-saving appeal. Together, we will make a real difference in early detection and improved outcomes for local breast cancer patients.



To find out further information about our £410,000 Mobile Breast Screening Appeal and how you can support us please visit:- www.scannappeal.org.uk



“I’m absolutely thrilled to see how quickly our community has rallied behind this important fundraising appeal, helping us reach our first £100,000! I encourage everyone to think about what support they can offer – why not visit one of Scannappeal’s beautiful open gardens this summer, organise your own fun fundraising event, or simply donate whatever feels right for you. Remember, your support, no matter how big or small, will help ensure early breast cancer detection for those living here in Bucks. Thank you from the bottom of my heart!”

Lorraine Kelly, Appeal Ambassador

A record breaking year!

We are absolutely thrilled to share that our hospital bookshops in Amersham, Stoke Mandeville, and Wycombe raised an astonishing £48,820 in 2024 – our highest annual total ever! This incredible achievement wouldn’t have been possible without the unwavering support of our wonderful customers, generous donors, and dedicated volunteers.



Books needed

If you have any good quality adult fiction or children’s paperback books that you no longer need, please consider donating them to our bookshops in High Wycombe, Amersham, and Stoke Mandeville Hospital. Donations can be dropped off at any of these locations, or at our office at Amersham Hospital

Scannappeal is a local charity that raises funds to purchase life saving revolutionary medical equipment for Amersham, Stoke Mandeville, Wycombe NHS Hospitals, serving people living in Bucks and the surrounding areas.

T - 01494 734161 W - scannappeal.org.uk

Registered Charity
No. 296291



CHAMELEON SINGLES GROUP



Summer has seen Chameleon members enjoy a number of social events both indoors and outside taking full advantage of the warmer days recently. As in previous years we have two BBQ’s the first of which has already taken place with the second due in late August.

Following a spring walk in April we have done two more firstly starting out at Little Kingshill and going up to Peterlee Farm then returning to the Full Moon for a light lunch and drinks. Then a walk from West Wycombe Village going up the hill to do a loop back to the village with coffee at the Apple Orchard in the High Street. Both walks were only short making them accessible to virtually all.

Along with our popular regular events including the Lunch Club on the second Friday of the month and the Pub Night on the last Thursday we continue to do much more driven by our members and their ideas. We plan to attend the Hazlemere Community Centre Quiz again in October coming a respectable 6th out of 10 teams at the June Quiz Night.

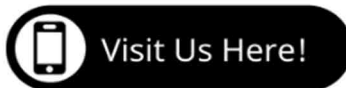
For those who want to join us from home we have a Zoom social where we catch up for 40 minutes once a month. This is particularly useful for those who cannot easily get out and is also a place to swop ideas for future events and plan any travel.

If you are single, 40-60’s, looking for new friends and a great social life why not give Chameleon Singles Group a try? There are no strangers at Chameleon, just new friends to be made. The group has several local people from Totteridge, Terriers, Hazlemere, High Wycombe and the surrounding areas and you would be very welcome too. To find out more call Terrie on 01494 445816, Trevor on 07879 332975 or e-mail: info@chameleonsingles.org.uk. Visit the group on-line at www.chameleonsingles.org.uk or search for us on Facebook and Nextdoor.

Find us on 

DO YOU NEED TO REMORTGAGE IN THE NEXT 6 MONTHS ?

Call today on 01494 211194.



**Applicant
Mortgage
Brokers**

YOUR HOME MAY BE REPOSSESSED IF YOU DO NOT
KEEP UP TO DATE WITH REPAYMENTS ON A MORTGAGE
OR OTHER DEBT SECURED ON IT.

Walk With Willie into the autumn

SUNDAY 19 OCTOBER AT 10.00 'High Wycombe unmasked!' part 1

Meet by the red letter box at the railway station. Distance 1/4 mile in 1 hour. See images of the original railway station and trains, learn how a US airbase in the town proved pivotal in winning the Second World War and view the oldest standing structure in Wycombe/hear about the mediaeval welfare state.

THURSDAY 20 NOVEMBER AT 10.00 'High Wycombe unmasked!' part 2

Meet under The Guildhall for a flat walk along the High Street. Distance 150 yds in 1 hour. Hear about High Wycombe as a Rotten Borough, discover the world renowned institution that started life here in 1799 and visit the Guildhall where the Town Council met for 175 years up until 1932.

SUNDAY 30 NOVEMBER AT 14.00 'Suffragists, Bodgers, Mosquitos and Goals'

Starts outside Godstowe Preparatory School, Shrubbery Road, High Wycombe HP13 6PR for a walk down to the cemetery and west central Wycombe. Includes two short steep descents with a distance of 1.25 miles in 2 hours. Come and hear about local women's struggle for equal rights, discover the industry that made Wycombe famous throughout the world, learn about the town's serial criminal and why Wycombe Wanderers score in the Guinness Book Records.



Buckinghamshire Pupils receive their GCSE and A-level results

Thousands of students across Buckinghamshire in August 2025 received their GCSE and A-Level exam results. Ade Osibogun, Buckinghamshire Council's Cabinet Member for Education & Children's Services said: "A huge well done to all those who have picked up their results. The wait between exams finishing and results coming out can feel endless. Congratulations to those who have worked hard, I hope your efforts have paid off and you've achieved the results you were hoping for."

There is also a lot of support available including:

- The Exam Results Helpline – 0800 100 900 – offers free advice
- Youth Employment
- BBC support for parents – A-level and GCSE
- BBC support for students – A-level and GCSE
- A level and GCSE post results service— Pearson, AQA, Eduqas
- UCAS Support
- Save the Student

