



ARROW
TAXIS

**WHEELCHAIR ACCESS VEHICLES
MINI BUSES**

CORPORATE ACCOUNTS

LOCAL & LONG DISTANCE

ALL MAJOR AIRPORTS

CONTACT NUMBER

01494 474764



INFO@ARROWTAXIS.NET



SEARCH FOR US ON FACEBOOK



Totteridge and Terriers News

Issue 55

T&T NEWS

Spring 2021



Picture © DW 2021

Spring at Totteridge Common. The trees are yet to gain full leaf cover in this early picture as the spring sunshine lights up the woods.

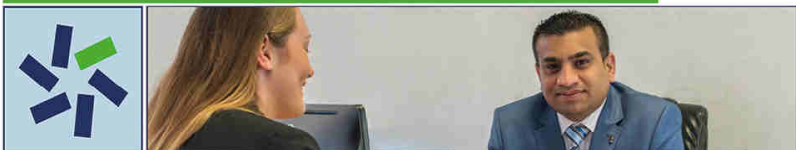
See inside for all your community news from Totteridge & Terriers

ROAD TRAFFIC ACCIDENT



Been in a road traffic accident? You may be entitled to claim compensation.

INJURY COMPENSATION



Our friendly team are here to get you the right compensation for your claim.

VEHICLE REPLACEMENT BY AIHL



AIHL can provide a variety of replacement vehicles to minimize your inconvenience.

ACCIDENT AT WORK



Whether it's a slip trip or fall, our experienced team are here to advise you.

✉ info@aihlclaim.co.uk  www.aihlclaim.co.uk

12A- Portland House Arnison Avenue High Wycombe HP13 6DQ

Back Page N.I.B (News in brief)

Local Groups

At the time of publishing our spring 2021 edition of T & T News many groups, organisations and clubs are no longer running their regular and fundraising events. Where we can updates will be included on our web site at www.tandtnews.org.uk

T&T News Diary

Remember to let us know your events for the return of the diary page. Between printed editions we can include your events on our web site diary.

T&T Web Site

Our web site is now regularly updated with the latest news and information. Plus we carry extra stories that are not included in the printed magazine. With the COVID-19 pandemic restrictions easing we will bring you up-to-date information on local groups and clubs as we receive them. Visit our web site at: www.tandtnews.org.uk



Discover the eLibrary

From eBooks to encyclopaedias to magazines and music; visit Buckinghamshire Libraries from home with your library card and enjoy a huge range of resources from the comfort of your sofa.

If you are not a member yet, you can join online today at bit.ly/JoinBucksLibraries

Keep up with your reading using Libby for eBooks. Fiction, biography, children's books to cookery books; the collection on Libby continues to grow and now includes hundreds of eAudiobooks.

Need even more eAudiobooks? Try BorrowBox for the latest releases.

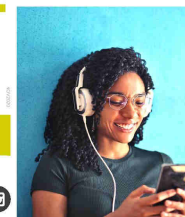
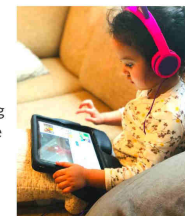
Practise your driving test knowledge with Theory Test Pro or browse as many magazines as you like using the RBDigital app.

Get the news from national and international newspapers using PressReader or dig into the past with the Times Digital Archive.

For homework use Britannica Library to check your facts or discover the changing nature of everyday life in Britain with the John Johnson Collection.

There really is something for everyone.

Explore the eLibrary today at bit.ly/BuckseLibrary



Buckinghamshire Libraries and Culture

www.buckinghamshire.gov.uk/libraries



Totteridge and Terriers News

68 Windsor Drive
High Wycombe HP13 6BL

Telephone: 01494 463107
Text / Mobile: 07905 888098
E-mail: editor@tandtnews.org.uk
Web: www.tandtnews.org.uk

BSB Printed by: BSB Print
Doncaster, South Yorkshire
Tel: 01302 - 320324

Winter 2020 Print Run: 3,000 copies



Find us on



Council Elections 6th May 2021

Council elections are going ahead this year on 6th May 2021. This year is going to be very different; and with the possibility of self-isolating with symptoms or after contact with covid still ongoing as an issue. A POSTAL VOTE is a great opportunity to ensure you can still vote, regardless of what's going on on the day! Follow the link below and fill in the register to vote form (takes 5 minutes) and as part of the form you can ask for a postal vote, and decide on how they send it to you.

Remember every vote and voice matters

<https://www.gov.uk/register-to-vote>

T & T News is published four times a year in March, June, September and December. We aim to get the magazine distributed by mid month of issue. In order that we can achieve this deadline we need your articles and advertising as early as possible. Our deadline for the summer 2021 edition is 20th May.

We thank all our advertisers and contributors for their support. However T & T News cannot endorse any product or service contain within this magazine. You are advised to check details of all goods and services offered. All contributions are accepted in good faith and opinions expressed are not necessarily that of the editor or T & T News.

That's about it....Join us again in June 2021. In the meantime you can catch up with the latest news on the web at www.tandtnews.org.uk

2021 Advertising Rates:

B & W - Mini Ad £13 / £22 Quarter Page / £44 Half Page
Colour - Mini Ad £16 / £30 Quarter Page / £55 Half Page / £110 Full Page
(Full page adverts subject to availability—Summer 2021 deadline is 20th May)

WELCOME TO T&T NEWS SPRING 2021

INSIDE THIS ISSUE:

<i>Higberest Academy</i>	5
<i>W.I. Reports - Wyc Wenches Terriers W.I</i>	7 - 11
<i>South Bucks Hospice</i>	9
<i>Girlguiding</i>	13
<i>Church News</i>	14 - 15
<i>Chameleon Singles Group</i>	17
<i>The Golden Path to Computing</i>	22 - 23
<i>Steve Baker MP</i>	25
<i>Sculpted Love - Book Review & Competition</i>	28
<i>Back Page N.I.B.</i>	31

Hello,

Welcome to the spring 2021 edition of T & T News.

At last we have learnt the roadmap for coming out of COVID-19 which will be a relief for all. Many of our local groups, organisations and businesses have been closed or severely restricted due the pandemic and hopefully by the summer we will see things returning to a more normal way of life.

Our advertisers, contributors and distributors have been second to none in their support over these difficult times so a big Thank You once again to you all.

In this edition we have contributions from many of our regulars who through video conferencing, social media, text and e-mail have kept their groups going and will be looking forward to those face-to-face encounters once again. We are sure to hear more about this in our summer edition. In the meantime do keep safe and keep in touch with the latest news and information at www.tandtnews.org.uk

Happy Reading!
David Winterburn, Editor

Absolute Cleaning Services



A local cleaning company for all your domestic and office cleaning
Regular or occasional cleans.
One off 'sparkle' cleaning service

Call **01494 842020** or **07900 354174**

info@absolutecleaninguk.co.uk | www.absolutecleaninguk.co.uk



**General Civil
and Building Work**

**Commercial Property
Maintenance**

Tel: 01494 712139

Mob: 07798 897039

E-mail: lm@constructmaintain.co.uk

Markland Gardening Services

For all your general garden
maintenance
including
grass cutting / edging
hedge cutting
weeding / planting / mulching

PLUS

with 15 years experience growing
organic fruit and vegetables,
practical help and advice in creating
and maintaining
a vegetable or kitchen garden.

Tel: 01494-881119

Mob: 07847-111079

E: markland.gardening@googlemail.com

**AZTEC
CHIMNEY SWEEP**



**Brush & Vac
Fast Friendly Service
Clean & Tidy**

**Johnny The Sweep
All Areas Covered
Tel: 01494 532748**

Property Maintenance Services
For a reliable and quality based service

- ❖ Carpentry
- ❖ Roofing Repairs
- ❖ Internal Doors Supplied and Fitted
- ❖ UPVC Facias & Soffits
- ❖ UPVC Windows & Doors
- ❖ Replacement Blown Glazing Units
- ❖ Garden Decking
- ❖ Internal/External Decorating
- ❖ Gutter Cleaning/Repair/Replace
- ❖ Shed Roof Felting & Shed Bases
- ❖ Fencing & Gates Supplied/Installed



Crystal Property Maintenance
email: ash.craven@gmail.com
Telephone: 07742 022987

LANDS END
to
JOHN O' GROATS
Virtual Challenge

Starts 1st May

**WALK OR RUN THE LENGTH
OF THE UK IN SUPPORT OF
BUCKINGHAMSHIRE NHS HOSPITALS**

To register or find out more please go to <https://scannappeal.org.uk/event/lands-end-to-john-ogroats-virtual-race/> or call Scannappeal on 01494 734161

Index to Advertisers

Absolute Cleaning	p.3	David Winterburn M&M	p.10
AIHL	p.2	DJ Coles Property Services	P.18
Apache Plumbing	p.6	Feet Treat	p.10
Arrow Taxis	p.32	French Tuition	p.10
Arnold Funeral Service	p.18	FMIFA Equity Release	p.20
Atlas	p.6	Markland Gardening	p.4
Aztec Chimney Sweep	p.4	RMG Plumbing	p.20
Bucks Relationship Counselling	p.10	Terriers Autos	p.16
Cedar Barn & Stables	p.16	Tuition 100	p.10
Come Dance With Me	p.10	Vets 4 Pets	p.8
Construct & Maintain	p.4	Wye Residential	p.24
Crystal Property Maintenance	p.4		

Sculpted Love by Marcus Bicknell - Review & Competition

Marcus Bicknell, Chalfont St Giles resident, is better known in the High Wycombe area as the Chairman of the Hodgemoor Riding Association which maintains the trails in Hodgemoor Woods between Amersham and Chalfont St Giles. He is a business man (satellites for television and internet), races a Ford V8 stock car and writes on Victorian botany and art. Now he has let his own brain and spirit burst forth in a rather surprising first novel... if you like well-researched historical novels, romantic dramas or anything in between, then order *Sculpted Love* in paperback, Kindle/eBook or audio book on Amazon now.

What's the book about? Two girls in Nancy are swept up in the changing cultural, industrial, medical, scientific and geo-political tides of the late 19th century in France; they act without hesitation on the new empowerment of women, in business and in love. Against this background and the art nouveau of the Ecole de Nancy, a solitary sculptor is drawn into the girls' lives. Twenty years earlier, as the Germans advance on Metz in August 1870, a two-horse carriage driven by a gnarled deserter from the Prussian army escapes south towards Nancy. In the rear, a young French entrepreneur is hand-in-hand with a stunningly beautiful lady speaking German with a coarse accent, pregnant by another man and masquerading as a countess.

What's not to like?

US reviewer Bruce Kennett says "I enjoyed this book very much; it has a plot that carries you along. I learnt a lot from the narrative, about the war and the beginnings of art nouveau and the fleeing of so many creative types to Nancy; I also love love love the inclusion of all the art!"

From my point of view, I just enjoyed a really good read. An easy read but with super detail and believable characters. Clarence Bicknell was in the prime of life in the 1890s and surrounded by women; Marcus wrote a paper on his personal life (www.clarencebicknell.com/downloads). The book is set in northeast France but could it all have happened here on the coast? Marcus and his wife Susie live at Castellaras between Valbonne and Mougins for five years. I wonder.

<https://marcusbicknell.wordpress.com> Purchase at <https://amzn.to/2FtaaYi>

For a chance to win a signed copy of the book answer this simple question:

Which famous house that is open to the public is located in Marcus's home village of Chalfont St Giles?

Answers by e-mail to: editor@tandtnews.org.uk

(Competition closes 31st March 2021 and the winner will be announced shortly after)

Can your firm dig deep to help a school's new gardening club?

Businesses are being urged to help a new gardening club blossom at a school in High Wycombe.



The Highcrest Academy want pupils to be able to branch out and benefit from a 'social and therapeutic' horticultural programme.

The academy aims to buy a shed and tools and possibly a greenhouse for the project, named Highcrest Horticulture, but it needs around £1,000 to get the scheme off the ground.

Now Highcrest is trying to raise the necessary funds by appealing to local businesses to step in with a sponsorship deal.

Joe Clarke, Assistant Headteacher, explained: "We will be using horticulture to aid and inspire positive behaviour, social interaction and overall wellbeing in students.

"It is a wellbeing intervention project for selected students who will benefit from this social and therapeutic horticultural programme at our school. Students will work with a teacher to create a garden in our grounds where they will grow fruit, vegetables and flowers. The aim is to raise enough funds to buy a shed and tools for this project, even ultimately a greenhouse out of recycled materials if possible. This will be extremely beneficial to students."

Companies or organisations interested in partnering the school over this should contact Caroline Hardaker at chardaker@highcrestacademy.org.uk or call 01494 529866.



ATLAS

www.atlas-direct.com

TV AERIALS • SATELLITE TV • CCTV • INTERNET

SPECIALISTS IN:

- DIGITAL TV & RADIO AERIALS
- SKY, FREESAT, EUROPEAN SATELLITE SYSTEMS
- WiFi ACCESS POINTS / WiFi ENHANCEMENT
- CAT5 / CAT6 NETWORK POINTS
- TV WALL MOUNTING
- CCTV SYSTEMS / SMART PHONE & TABLET VIEWING
- RING VIDEO DOORBELL
- COMMERCIAL AND DOMESTIC

**SAME DAY SERVICE
CALL US NOW OR VISIT
US ONLINE**

01494 444060






Apache Plumbing & Bathrooms LIMITED

SUPPLY AND FIT OF QUALITY BATHROOMS

INSPIRE
INVIGORATE
EXCITE...



FREE Quotes

01494 711700

✉ enquiries@apacheplumbing.com
 🌐 Apacheplumbing.com
 📌 facebook.com/apachebathrooms

Checkatrade.com



TOTTERIDGE FC has provided football to the local youth in the community since 1996. For more information and contact details please visit our web site – www.totteridgefc.co.uk

WE ARE YOUR LOCAL COMMUNITY FOOTBALL TEAM!

WE CAN START AGAIN! With the recent hopeful news from Boris, he is planning on slowly lifting us out of lockdown. From March 29 we will be able to train again and the FA has said they plan to delay the end of the season (usually the last weekend of May), to the end of June. This will be great for all of our players to get back out playing some football.

As it's been a poor couple of months with the weather not many of the children have been able to go out, but with half term just gone the club set challenges up for the players, they needed to do some exercise! We had an absolutely fantastic response with some of our older players in the U15s and U16s group running 5km in under 30 minutes. This is a huge achievement and all the players have impressed me with their attitudes.



Figure 1 - The Club's First Team in 1996

This year is also the club's 25th anniversary, and with the lockdown coming to an end we hope to celebrate the past 25 with a big celebration in the summer. Above is a picture of the club's first ever team, who played in two kits, one green and one sky blue.

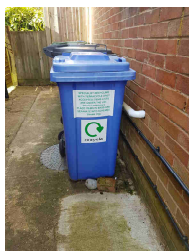
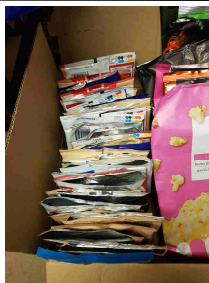
The club have also had some enquiries into an U7's team, which would be a great booster to the club for some long term success and stability. This will be the Under 16s final season together as they go off to college and other higher education, with a lot of them staying on to do football related education.

If you are interested in joining, either as a player or volunteer, please contact club secretary Simon Kearey by email simonkearey@gmail.com or call the appropriate team manager:

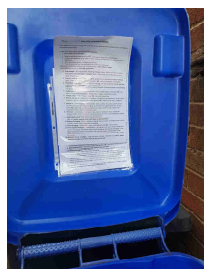
- Under 9's – Michal Chivers 07493 552335
- Under 11's – Jon Fairless 07723 314419
- Under 12's – Khalid Machmoum 07834 586786
- Under 14's – Frank Milligan 07506 564169
- Under 15's – Tak Aziz 07838 579217
- Under 16's – Nathan Jopp 07462 492429

Recycling in Totteridge & Terriers

There is a new initiative for recycling in Totteridge & Terriers. We are now all used to recycling items such as paper, cardboard, glass bottles and cans etc. But what do you do with crisp packets? A new scheme run by Sarah-Jane, Louise and Jo aims to re-cycle these helping to raise money for Kingswood School and St Johns Primary.



Please ensure all crisp packets have been shaken clean (and perhaps wiped) and flattened as per our first picture. **Then drop them round to 16 Highworth Close** and put them in the blue bin with the label on it. Its as simple as that and you will be helping raise money for the schools in doing so.



There is even a guide on the bin lid to assist with further recycling.

Helplines for the Coronavirus

Below is a list of organisations that can offer help during these difficult times and beyond.

Buckinghamshire Directory - <https://directory.buckinghamshire.gov.uk>

One Can Trust food bank - 01494 512277

Karima Foundation - 07853 150847

WISE - 07477 221688

High Wycombe Mutual Aid - 01494 911229

Buckinghamshire Council - 01296 395000 (If anyone is struggling call this number for help and advise)

Helping Hand, Families this winter support line - 01296531151 or out-of-hours 0800 999 7677

Every Mind Matters - <https://www.nhs/oneyou/every-mind-matters> or call NHS 111

There are a number of other organisations that may be able to help you too such as Student Space, Mind, Samaritans and Young Minds.



Wycombe Wenchies WI

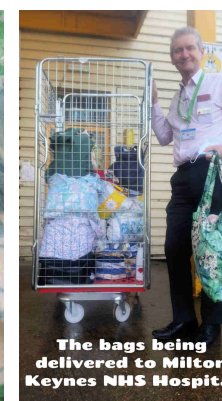


Welcome to another roundup of Wycombe Wenchies WI life during the Global Pandemic. We have now been in Lockdown for many weeks, but there is definitely light at the end of the tunnel. The weather is improving, easing of restrictions is on the horizon and many of our members have been fortunate to receive their first vaccination dose. This has really lifted spirits and there is a much more positive vibe around our Institute after a rather flat January.

We have had another member join us this month and any ladies reading this are most welcome to come along and give us a try. We are a very friendly, warm, supportive and outgoing bunch of souls, who enjoy life to the full, love learning new skills, widening our knowledge and supporting our local community. This last fact was demonstrated in January when Fiona answered a plea from local NHS hospitals. She co ordinated a group of our members to create attractive tote bags for bereaved families to collect the items of loved ones from the hospital after they had sadly passed away. We contributed 78 of the 600 bags produced by Buckinghamshire WI's. The entire project was over seen by Thelma Sackman, our County Resilience officer. The project is still ongoing if anyone would like to get involved? just get in touch.



These are the labels sewn into the bags



Our monthly meeting in December was very exciting as all our members had received an early Christmas gift of a "meeting in a bag", comprising of a Wycombe Wenchies Mug, tea bag, chocolate biscuit, puzzles and a Christmas Themed fabric facemask. These were hand delivered to every single member and brought tears of delight to many by the sheer surprise of someone venturing to their front door and leaving a gift for them to open. Our thanks go to Heather, a very dedicated Committee Member who had created the bags, put them all together and gift wrapped them.

Members enjoyed an interactive talk in January given by David Allen on Victorian etiquette entitled "Manners Please Dearest". February's meeting was based around our local Food Bank "The One Can Trust. David Titman explained how the Charity is organised and how the incredible rise in demand for support has been met.






All our regular subgroups have been incredibly active over the past three months, Creative Wenches focused on producing Green Hearts in various forms to support the February campaign of "Share the Love". Book club, Cinema Group, Virtual Cuppa and Supper Club all met and enjoyed sharing various topics of discussion. We have also introduced a new monthly Coffee & Cards group.

You can find us on Facebook at wycombewencheswi and our website, wycombewi.weebly.com. Hopefully we can possibly begin to think of meeting again in our hall at Totteridge Community Centre. However, until that time you would be most welcome to join us now in our virtual, online world. It really is great fun!

Warmest wishes,
Helen Speakman
wycombewenches@hotmail.co.uk

At Vets4Pets High Wycombe

We are proud of our

-  Convenient location and opening hours
-  Highly trained vets and nurses
-  Modern medical and surgical facilities
-  Affordable healthcare plans, like our Vac4Life
-  We work with you to keep you fully informed on what treatments your pet needs and why

Call **01494 443 075** or visit **vets4pets.com**

Vets4Pets High Wycombe

133 Amersham Road, High Wycombe, HP13 5AD

Opening times: 8.30am - 7pm Mon-Fri, 9am - 12pm Sat



Vets4Pets
Putting your pet first



Steve Baker MP

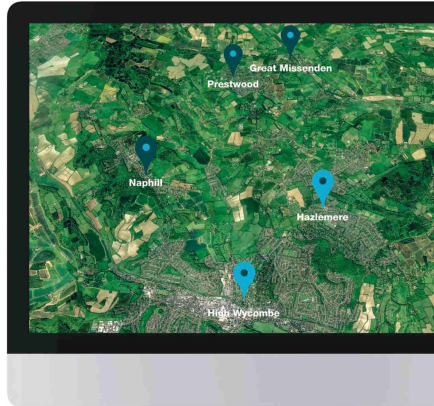
The Prime Minister has recently announced his plans to lift the coronavirus lockdown restrictions. I am pleased to see schools will return on 8th March. I should like to take this opportunity of thanking all the parents who have helped children with their schoolwork over the last weeks. I know it has not always been an easy task, with many having to balance being a home teacher with work commitments. I am conscious there will need to be support for those children who have fallen behind with their schoolwork and to address any mental health issues from not being in the classroom.

I have had very good feedback from constituents about the vaccination programme. I should imagine that most of the people who are reading this newsletter have had their vaccination at Adams Park or the Town Hall. I have been told the system works very efficiently, and with most people being seen and vaccinated within 15 minutes. I would also like to pay tribute to the many volunteers who have been helping people at the vaccination centres, often standing outside in the cold for long hours. If you have been invited to have a vaccination, but not yet made an appointment, I urge you to have the vaccine as soon as possible.

As the vaccination programme continues and the R number falls, I would like to see our way of life restored as soon as possible. I know the vast majority of people would like to begin seeing friends and family again. I have been working with people in the travel and hospitality industries to encourage the Government to open leisure facilities as soon as it is safe to do so. I am also sure there are many people who would like to begin planning their wedding and other family celebrations. The Prime Minister's road map will allow people to start putting arrangements in place.

I am conscious that Government schemes to support workers and business are planned to come to an end on 30th April. I am hopeful that once life begins to return to normal the economy will recover quickly, and job losses will be minimal, but I know there continues to be concern that some businesses will not survive. It is important Parliament does not forget those whose work is impacted most by the restrictions, who tend to be people employed in the hospitality, leisure and travel industries. With the Government now acknowledging the range of harms from lockdown and who will be hit hardest, we need to reform the standard of modelling used by the Government to consider when it is safe to lift restrictions, introduce competitive expert advice, and have a new public health act.

If you would like to get in touch with me please email: steve.baker.mp@parliament.uk. If you despair of bureaucracy and would like my help with a particular issue, please phone my constituency office on 01494 448408.



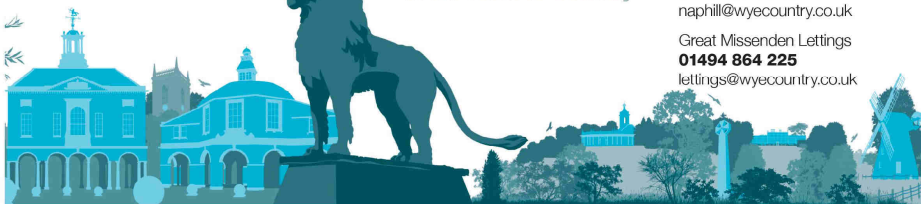
It's our business so we care.

Years of estate agency experience and local knowledge within the Partnership means you will be dealing with people who know their property market inside out, and who care about the service that we provide.

Being independent allows us the flexibility to invest in the best marketing technology in house together with a strong presence on the familiar national property portals, so we offer clients the very best of both worlds. Most importantly, we want our customers to be satisfied. Our results, and the personal recommendations of our clients confirm that we are providing a service that we can be proud of, so you can be sure you are in safe hands with Wye.

If you are thinking of buying, selling or letting in High Wycombe or the surrounding villages contact The Wye Partnership. We have the expertise and local knowledge to get you to where you want to be.

From Town to Country



wyeres.co.uk

Hazlemere
01494 711 284
hazlemere@wyeres.co.uk

High Wycombe
01494 451 300
wycombe@wyeres.co.uk

London Park Lane
0203 368 8472

High Wycombe Lettings
01494 358 358
lettings@wyeres.co.uk

wyecountry.co.uk

Prestwood
01494 868 000
prestwood@wyecountry.co.uk

Great Missenden
01494 868 000
missenden@wyecountry.co.uk

Naphill
01494 565 555
naphill@wyecountry.co.uk

Great Missenden Lettings
01494 864 225
lettings@wyecountry.co.uk

On-line art group



Patients of South Bucks Hospice have praised an online art group which has lifted their spirits during the Covid-19 lockdown. The pilot course has been run once a week on Zoom since late January by Juliette Coffey, Head of Individual and Family Support at the hospice in Kingswood Park.



Juliette, who was trained in using art in therapy, is delighted with the results of the classes and says the high quality of the work produced by the patients has 'blown everybody away'.



"Our patients normally have a lot to think about, so it is so life-enhancing to have an hour a week where you don't have to worry about Covid or think about the circumstances you are in. The online classes have provided a very welcome sanctuary and they provide a space for people to explore their inner creativity." Initially, the hospice sent out a starter art pack - including watercolours, paintbrushes, a palette and a suite of suggested images - to the small group of patients.

Paulette Rackstraw, from Amersham, said: "Before lockdown I had been attending Butterfly House as a daycare patient once a week. Now I really look forward to the online art class on a Thursday afternoon. Seeing and chatting with people helps my mental health as I'm in the clinically extremely vulnerable group and have been shielding for a long time.

The hospice has also gone online to help patients in other areas during the pandemic. A 'Mindfulness' Group, as well as internet sessions on hand massages and relaxation techniques have proved highly successful, says Acting Chief Executive Jackie Ward.

South Bucks Hospice plans to start a major new six-week bereavement course in May. It will be entitled Addressing Loss During Covid: Navigating Life After the Storm. Bereaved people who wish to attend can find out more by emailing counselling@sbhospice.org.uk



FRENCH TUITION

ALL LEVELS
WELCOME

GCSE, A-LEVEL, BEGINNERS
AND ADULTS



For further details please
telephone Fabienne

**01494
815749**

Feet Treat

at The Castle Street Clinic
Julia Adam
(BAFHP)MCFHP DipFHT MAFHP

- Corns • Callouses • Verrucas • Athlete's Foot
- Fungal Nail Infections • Diabetic Patients
- Ingrown Toe Nails • Nail Care
- MediPed • Biomechanics

and other footcare advice...

The Castle Street Clinic, 19 Castle Street
High Wycombe HP13 6RU

Tel 07939 574789

www.feetreat.org.uk

Bucks Relationship Counselling

Relationship in need of help?
Communication an issue?
You need to talk to someone?
Qualified Relate Counsellor available
Help for couples or individuals

Text or Call Chris on 07549 103298
www.bucksrelationshipcounselling.co.uk

11+ Tuition

Now registering for September

DBS checked
Based in Terriers

For more information contact
Tuition100@yahoo.com
Or call 07786 937465

Come Dancing With Me

Private Tuition for couples
& First Dance
IDTA Qualified Tutor

Classes available from
January 2021



Visit our website or email to book
info@comedancingwithme.co.uk
www.comedancingwithme.co.uk

David Winterburn Marketing & Media

In-house newsletters,
Local promotional work
Flyers for the small business
RSL Radio service management
Training and Production

Tel: 01494 – 463107
dwinterburn.fm@tiscali.co.uk

c) Files such as music and pictures that are not particularly important or you can replace.

Make sure you back-up the (a) category in a number of different places regularly, and if at all possible, to a DVD and give it to a family member for safekeeping. Back-up category (b) now and again in at least two places. Category (c) is often large and if you cannot easily back it up it is not so important.

There are several main ways to arrange a back-up:

- Copy to a DVD (most secure)
- Copy to an external hard drive
- Copy to a 'pen' drive (USB memory stick)
- Copy to an online storage system (eg Google's Drive)

Email Strategies & Systems Email is now an almost essential for day to day communication. Without one, simple tasks such as booking a holiday, online shopping and liaising with family and friends becomes difficult or impossible. So, let's consider 'best practice' for emails.

Strategies - So, the way we set up email is important and it should be considered carefully. Many people are given an email address by their Broadband provider. Unfortunately this is supplied as a marketing ploy and it is not the best option. There are two main ways either register you own domain (best for businesses or organisations), or use a standard online email such as gmail. This provide good functionality and you shall not lose your address when you move away to another Broadband supplier. As part of any strategy it is very useful to have two independent addresses - a main address for friends and a secondary address for everything else. Spam will then be kept to a minimum and anything important such as an order you can forward to your main address. If you use gmail, you can keep each email address (main & secondary) logged in accessing two different browsers, (eg Chrome & Firefox).

Choose your Interface - Surprisingly, these are usually independent from your email provider. The gmail interface may be used to handle your email from almost any email system. Some people do not wish to move to a different interface and learn another. This is fine provided issues such as backing up email files are understood. Also some interfaces do not allow access from multiple devices, (eg tablet, phone and laptop). Gmail is the preferred standard option. It is free, has great functionality, it is enabled across all devices and it provides a host of other functions such as a free easy to use drag and drop backup for your files and pictures along with a useful calendar.

By John Phillips - Performance Computing - www.itran.co.uk

The Golden Path to Computing

How to Organise Your Computing - Today there are many options and each of us has different needs. Here I provide a simple overview of different devices and where they may be best utilised.

Tablets & Larger Smart Phones - These devices work well for internet browsing, simple emails & messaging apps. They are good for running personal applications such as WhatsApp, Zoom, google maps, camera, photos and some games. They are not good at office type jobs where typing, spreadsheet work or printing are required. For rigorous internet research a laptop or desktop is also better.

Chromebooks - These sit in-between Tablets and Laptops. Unless you have a specific reason to use one, I suggest at the moment sticking to either a Tablet or a Laptop. In future these may become more standard devices

Laptops & Desktops - These will do a similar job of work. Clearly laptops are portable, while desktops need more space. Desktops are preferred for office work as they provide a better screen and are more ergonomic, especially for typing. Be careful when buying new laptops as many do not have easy to remove hard drives or even removable batteries. Some makes have issues, stick to the brands such as HP, Toshiba, Dell, Acer.

Where to Purchase? - Unless you know a reliable source, I would strongly suggest you purchase from a reliable resource such as John Lewis and not from the large retail chains, as these do not always provide good advice or sell you what you need, but concentrate mainly on low price.

Setting up all new devices - This is paramount to your success! The manufacturers set up your new device for *their marketing needs*, most settings will need adjustment to make the new system work properly for you, so expect to spend some time doing this. Note that Window systems all have free antivirus built in by Microsoft - you do *not* need to purchase any antivirus and if you do and install it, your new system will slow down!

Back-up your files - This is the single most important aspect of your computing. Unfortunately, I see many people who have lost their information, pictures, documents and records that are irreplaceable.

Think about the files and pictures you have, put them into 3 categories:

a) Documents and pictures you must NEVER lose. This includes business docs and accounts, and things like old irreplaceable pictures, wills, special documents like a thesis or ancestry you are working on. Put these in a separate working folder for easy back-up.

b) Documents you really don't want to lose – such as old copies of letters, work files, spreadsheet data, address books, old emails



TERRIERS EVENING WI

60 NOT OUT !

Nearly two months into 2021 and members of Terriers Evening WI, along with everyone else, are beginning to feel the effects of yet another lockdown. However, light is at the end of the tunnel and most members are thankful to have now received their first vaccination.

We have continued with our Zoom meetings which have acquired an enthusiastic following amongst many members welcoming the opportunity to “meet up” with their friends and share news. December gave us an excuse to enjoy a mince pie and glass of wine while chatting and, at the February meeting, there was a challenging quiz to get the brain cells working.

Most importantly, the redoubtable spirit for which the WI movement is renown is not to be crushed by the current situation. Just as during the wartime years Institutes up and down the country have responded by stepping up to help in a number of ways, both in the local community and with helping to provide PPE etc Terriers members helped to make bags which could be used for laundering protective gowns.

Crafts of all varieties have always been popular with WI members and this has continued apace. Greetings cards are especially welcome, and members were delighted to each receive an exquisite home-crafted Christmas tree decoration.

We, at Terriers will be celebrating our 60th anniversary this year and have been thinking about the roots of the organisation in Buckinghamshire and, particularly, at our own role in Terriers and Totteridge community. The Bucks Federation was founded in 1920 with the first Institute in T & T, Terriers and Totteridge Afternoon, being founded in 1926. This closed in the 1990s and, although circumstances have dictated that Terriers Evening now meets in Hazlemere, a place in our hearts remains with our roots in the local area.

We would love to find out more about past links of both Terriers and Totteridge and Terriers Evening with the local area and would welcome any reminiscences that readers may have. If you have been a past member or know of anyone who has, please contact us on the number below. Meanwhile we continue to look ahead to a less restricted summer and to planning our diamond celebrations.

For more information about the WI or future meetings please contact Celia Carter on 01494 444395



After a year like no other, please accept our sincere thanks for your ongoing support of Scannappeal. Now more than ever we are immensely proud to support our local Bucks NHS hospitals, each one representing the beating heart at the centre of our community throughout the current pandemic. We hope that together with the help of the local community we can continue to support our local NHS hospitals long into the future. To find out more about our fundraising work please visit – www.scannappeal.org.uk

New Cardiac Appeal

Our new £125,000 Cardiac Appeal will support the cardiology department at Wycombe hospital by funding the single most powerful tool currently available to cardiologists. At the heart of this appeal is a dedicated cardiac ultrasound system which generates detailed, real time moving images of the heart. This allows clinicians to assess the structure and function of the heart in patients with coronary artery disease, valve disease, heart failure, congenital heart disease and stroke. To find out more about this appeal, the equipment and the impact it will have on patients in Bucks visit:- www.scannappeal.org.uk/appeals/cardiac-appeal/



About Us

Scannappeal is a registered charity that raises funds to purchase life saving state of the art equipment for Amersham, Stoke Mandeville, Wycombe and community hospitals, serving people living in Buckinghamshire and the surrounding areas.



100,000

patients were diagnosed or treated in the last year with equipment funded by Scannappeal



1 in 4

of the local population has used Scannappeal funded equipment



£15m+

has been raised to provide lifesaving and life changing medical equipment for local Bucks hospitals

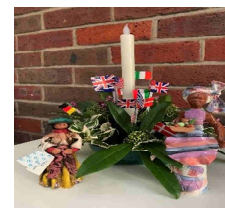
Registered Charity No. 296291



Inner Wheel of High Wycombe club

We continue to meet monthly via Zoom and are pleased that each month more members are managing to join us on our Zoom meetings. We continue to have speakers at our meetings and have had some interesting talks from various speakers. Fortunately, we have managed to continue raising funds for the local charities we are supporting. Our members have been donating the monies they would have usually paid for their lunches at our meetings to our charity funds. We have also raised money by holding a raffle with a difference.

In November, our members joined together to support the One Can food bank Christmas hamper campaign, where our members made some very generous donations of food and toiletries. We have also been fortunate to have a couple of our articles published in the Bucks free press, which has been great in publicising some of the work we do in the Inner Wheel.



On January 10th it was international Inner wheel day, and our members all lit a candle of friendship to commemorate the day.

The last few months have all made us grateful for the friendships and support the Inner wheel provide. If you are interested in joining the Inner wheel please contact her membership office kate Williamson on K.williamson@keme.co.uk.



Cycling in South Buckinghamshire

Local Cycling UK groups are continuing to not arrange group rides during the current lockdown. However as the restrictions ease it is hoped that rides initially limited to small numbers can resume from the beginning of April. Group members continue to ride singularly or as allowed with one other for part of daily exercise.

Members keep in touch through the web site, Facebook, through monthly newsletters and our Zoom sessions held on the third Thursday of each month. We hope soon to get back to holding our regular clubrooms with a variety of cycle related topics and slideshows. This year we also plan to hold our summer BBQ which last year had to be cancelled.

To find out more about the Cycling UK South Bucks groups visit our web site at: www.southbuckscycling.org.uk **New Members Welcome!**



fmifa

Equity Release
Accessing your property wealth

25 YEARS

Independent Financial Advice
Contact us: 01494 817151 | vanessa@fmifa.com | www.fmequityrelease.com
Penn Barn, By the Pond, Elm Road, Penn, Bucks HP10 8LB
Financial Management is a trading title of Phillip Harper LLP which is authorised and regulated by the Financial Conduct Authority

RMG Plumbing & Heating

- ◆ **Boiler Servicing**
- ◆ **Boiler Repair & Replacement**
- ◆ **All Aspects of plumbing covered**

Local Gas Safe Registered heating engineer and plumber.

For all your heating and plumbing needs.



BOILER SERVICING AND LANDLORDS GAS SAFETY CHECKS AT COMPETITIVE RATES

Call us now: **Mobile 07765 461323**
Home: 01494 451591



What's Going on in Girlguiding?

Well, what a strange start to the beginning of the year! As with all national groups we have been unable to meet face to face for a very long time now. However, this has not stopped some guiding units still meeting weekly online and having Zoom meetings. Our meetings online are very different from what the girls normally do in a face to face meeting. They are used to running around and chatting but instead for much of the time they are sat in front of a screen. However, we do manage to still play games and they get to chat with their friends, even if it is in a different way. The girls are also still able to take part in activities and get badges. Some units are not able to meet online at the moment, but their leaders are still in touch with activities and badges. All girls have lots of activities available to them via the national Girlguiding website.

February 22nd is always a special day in Girlguiding as we celebrate World Thinking Day when all members of Girl Guiding and Girl Scouting around the world remember each other and send their good wishes. Did you know that there are 10 million Girl Guides and Girl Scouts around the world in 150 countries?

Girlguiding High Wycombe District celebrated World Thinking day slightly differently this year as we met together online. We had Rainbows (5-7 year olds), Brownies (7-10 year olds), Guides (10 to 14 year olds), Young leaders (14-18 year olds), Guiders and Trefoil Guild members from around the town join a Zoom celebration. We learnt about the worldwide movement and played a few games. We also managed to renew our Promises together, which was quite noisy!

We very much hope that it will not be too long before we can meet together again face to face.

We have spaces in most units at present so if you are interested in your daughter joining us, please register your interest on the national Girlguiding website at <https://www.girlguiding.org.uk/information-for-parents/register-your-daughter/>

We are always on the lookout for more leaders and helpers. If you are interested or want more information, feel free to contact either Julia Sparks julia.sparks@gmail.com or Nina Sparks minisparkyn820@yahoo.com



HELLO FROM JO

As I write this the government have announced their plans for unlocking the country. This third lockdown has for many been much harder this winter with the grey wet days and long dark evenings, and although St Francis' church building has been closed since Christmas, the church has been busier than ever increasingly supporting the practical, pastoral and spiritual needs of many.

Like the bulbs which have been growing unseen under the earth and are now bringing forth the promise of new life, the church council have been working behind the scenes listening to different people and community groups and learning how we, as a church, can help bring new life, hope and wholeness to all.

Our new church logo includes our response to what we have heard, as we seek to become a Beacon of Hope, Community of Love and Well of Refreshment for everyone. We are moving ahead with plans to offer a Wellbeing Café so that Terriers has a welcoming community space that is open to all. Our community garden will also provide a space where folks of all ages and abilities can gather together. We have also begun to explore the feasibility of an ambitious project for the church building, so that we have a welcoming, warm and accessible space with a kitchen and toilets that can be used 7 days a week for worship, community gatherings, concerts and conferences, and are launching The Friends of St Francis so that everyone in the community can be involved. If you have a passion for our local community, please contact me if you would like to become part of a team who will be planning The Friends of St Francis events.



As we approach Easter, join us for a fun **Zoom Quiz on Saturday 20th March at 7.30pm**, book online at www.eventbrite.co.uk/e/st-francis-lent-zoom-quiz-tickets-141414601881. Our weekly service will remain online for the time being, live-streamed on **Sunday at 10am on Friends of St Francis Terriers Facebook**. We also very much hope that we will be able to open the church to celebrate on **Easter Day: Sunday 4th April at 10am**. If we are able to offer an in-church service, due to social distancing booking will be necessary, so please telephone the church office in advance to book seats on 01494 462911.

Finally, after the warm reception the outdoor manger scene received at Christmas, we invite you to visit the Easter garden from Sunday 4th April, outside the church where there will also be a place to remember and give thanks for all those we have lost over the last year.

Blessings, Jo Revd Joanna Gallant: teamvicar@terrierschurch.org.uk
Tel: 01494 297933 www.terrierschurch.org.uk



Neighbourhood Watch in Wycombe District

Everybody needs good neighbours. There can't be a truer observation than those famous words at the start of each episode of the Australian TV soap. And they certainly sound a warning across the UK in 2020. Neighbourhood Watch is a community-based organisation that helps its members to be less likely to fall victims of crimes, such as burglary, car crime, anti-social behaviour, drugs issues, and cons & scams (fraud).

Neighbourhood Watch does exactly what its name says. With the help of its members and the police it keeps an eye on your neighbourhood and through its own schemes feeds regular up-to-date information by email about local crimes, crime trends, crime prevention advice and some community issues. It is also a means of encouraging people to come together to look out for each other's neighbours and share any relevant information on local problems. Schemes encourage the reporting of crime and suspicious incidents to the police. A scheme can be a complete road or part of a road, an apartment block, or any other easily identified group of properties.

So, do you think you could give just a little of your time to help run a scheme? Just half an hour a month will make a big difference. If you can, please confirm your interest to us by email to this address: publicitywdnhwa@hotmail.co.uk



A round up of news and events from the Hospice

Rennie Grove were winners of £5000 in the Ashtons "Life's Great Causes Campaigns". The Estate Agents annual campaign saw the charity come top in a poll of voters with other winners including the Hospice of St Francis and Teens United fighting Cancer.

Make your will on-line and Support Rennie Grove. You can find out more about this initiative with a local accredited legal firm by visiting <https://www.bequeathed.org/rennie>

A Rennie Grove supporter is compiling an anthology of short written pieces from people around the world to document the pandemic. Jan Moran Neil has already collected over 300 submissions by the closing date. Jan was also founder editor of "Anthology Rhyme & Reason" which raised over £60,000.

T&T NEWS NEEDS YOU

Distributed 4 times a year with a print run of 3,750 copies T&T News offers advertising from just £13 per issue.

See p.26 for rates, call or e-mail:

01494 463107 / editor@tandtnews.org.uk

We need distributors too. Please contact us if you can help out in local roads:

Totteridge Lane Nth/Highworth Close
Tyzack Road / Rushbrook Close
Walton Drive / Walton Close
The Quadrant / Hardenway
Green Road / Ridgeway
Totteridge Drive / Kingston Road

it's about us
CENSUS 2021

The census is coming

Census Day is Sunday 21 March 2021

We'll need your help with the census, which gathers vital information to help plan services such as transport, education and healthcare.

You must complete the census by law.

Look out for your invitation pack in the post. It will show you how to complete your census.



For more information visit www.census.gov.uk

Your answers are protected by law and will be kept confidential.

Office for National Statistics

PCPR1

D J Coles Property Services

Professional High Standard
Established in 1999

- Interior & Exterior Decorating
- Paper Hanging
- Coving
- Carpentry & Kitchen Installations
- Laminate & Wood Flooring
- Door Hanging
- Fencing & Decking
- Loft Insulation & Boarding
- Guttering
- General Property Maintenance & Improvements

Free Estimates
Competitive Rates

Mobile: 07747 783015
Email: djcolespropmain@yahoo.com



Arnold
Funeral
Service

891 London Road, High Wycombe
01494 472572

32 Gregories Road, Beaconsfield
01494 685000

- Traditional and Alternative Funerals
- 24 Hour Attendance
- Pre-Payment Plan



www.arnold-funerals.co.uk

Local Faith Group information for Totteridge & Terriers



St Francis Church

Located on Amersham Road in Terriers. www.terrierschurch.org.uk

Revd Joanna Gallant: teamvicar@terrierschurch.org.uk

Office email: churchoffice@terrierschurch.org.uk

Tel: 01494 297933 Office Tel: 01494 462911

Facebook: Friends of St Francis Terriers

Totteridge Baptist Church

Located on Hillary Road, High Wycombe, HP13 7RA

We meet in person when permitted, in line with the current coronavirus guidelines. We also have several fellowship groups running on Zoom. Please e-mail us if you want more details. E-mail: totteridgebc.secretary@gmail.com Tel: 07800 750678

Facebook: <https://www.facebook.com/totteridgebaptist.church>

St Andrews Church (C of E)

Located on Hatters Lane, High Wycombe HP13 7NJ.

Services are every Sunday at 10:15am.

Tel: 01494 - 529668

St Wulstans Catholic Church

Located on Hollis Road, Totteridge, HP13 7UN

Regular Masses both on Sunday's and at other times during the week.

Tel: 01494 - 438300

St Augustines Church (Catholic)

Located on Amersham Hill, High Wycombe

There are regular Masses on Saturday's, Sunday's and during the week.

Tel: 01494 - 523969

Totteridge Mosque

(Wycombe Islamic & Mosque Trust Limited)

24 Totteridge Road, High Wycombe, HP13 6EB Tel: 01494 - 513440

Also Muslim Education Centre at 4 The Parade, Totteridge Drive

Tel: 01494 - 522786

Wise (Wycombe Islamic Society)

St Marks Close, High Wycombe, HP13 6GN

Tel: 01494 - 259194

Web: www.wise-web.org

Terriers Autos Ltd (est 1984)

TIME FOR AN MOT OR SERVICE ?

Welcome to Terriers Autos. Our garage offers savings on your motoring bills, from Servicing and Repairs to Tyres, Exhausts and Air Conditioning We are proud of the exceptional reputation we have earned over the last 30 years as an independent specialist garage and we aim to provide you with the most honest and professional car servicing and repairs. If you need a car service, or car repairs, for all range of manufacturers' vehicles, our friendly local technicians are here to help.

As part
of your
service
we:

Changing engine oil and filter.
Checking essential items such as tyres, battery, wipers and fluid levels
Brake Fluid Condition.
Exhaust Condition
Suspension Check
Shock Absorbers Check
Manufacturers recommended service schedules followed
All Parts Used Meet or Exceed Original Manufacturers Specifications
MOT tests by arrangement



Call us now on
01494 441528

Rear of 98 Amersham Road, High Wycombe HP13 5AB
Next to St. Francis Church

Hire Cedar Barn or The Stables Hazlemere

Converted Barn and The Stables



Each room holds 60 people

Suitable for meetings, parties and fitness groups etc

Cost: £18 per hour Cedar Barn

Cost: £14 per hour The Stables

Please call Rachel on 01494 715548

or email bookings@hazlemereparishcouncil.org.uk

or visit www.hazlemereparishcouncil.org.uk

CHAMELEON SINGLES GROUP



If there is one year that will stand out in our almost 20-year history it will be 2020. This was the first time we were unable to produce a programme for two months and the first time we ventured into on line events. The change was rapid and has now become the regular way for the time being.

Between the lockdowns we were able to make use of the "Rule of 6" to meet outside during the summer months. Even if that was still available it would prove to be very difficult in the colder and wetter conditions of winter. However, we are looking forward to summer when perhaps things will have eased and we will be able to return to holding some of the group events we all enjoy.

We have over the last few months enjoyed our regular events such as the Friday Lunch Club and Pub Night at home. It's very much a case of supply your own food and drink and enjoy the conversation over Zoom. Other social media such as What's App and Facebook have also helped us keep in touch with video and a very good icon music quiz that got us all thinking.

Our virtual Pancake evening was a success too. Our expert pancake maker was on hand to show us how to make the perfect pancake along with a selection of toppings. Only difference this year was of course we all had to cook our own at home! Still, they were just as delicious and the conversation flowed amongst the eating.

Looking forward we hope to be able to return to having meals out at pubs and restaurants, going for days out, visiting the cinema and theatre, going for walks and many of the other things we enjoy. It may still be a while yet before we can get back doing some of these things. However, the wait will be worth it as we have lots of plans in the pipeline.

We are still welcoming new members to our group even though some of our newer members have only met on-line. If you are single, 40-60's, looking for a great social life and new friends then why not give us a try? There are no strangers at Chameleon, just new friends to be made both through our Zoom meet-ups and at regular events when these are possible. We have several local people from Totteridge, Terriers and surrounding areas and you would be very welcome too. To find out more call our membership secretaries Terrie on 01494 445816, Trevor on 01494 529067 or e-mail: info@chameleonsingles.org.uk. Visit us on-line at www.chameleonsingles.org.uk for more information and our current programme or connect with us through Facebook.

Find us on 