

# T & T NEWS



Picture © Chris Hurworth 2022

Early season snowdrops in Totteridge photographed amongst the remaining autumn leaves on Hatters Lane

See inside for all your community news from Totteridge & Terriers

## The **wye** Partnership



**It's our business so we care.**

The Wye Partnership gained their knowledge and developed their expertise within the most successful estate agents in High Wycombe. On witnessing the take over of these long established companies by nationwide chains we recognised the need for the retention of a local and independent service. Our recent merger makes the enlarged Partnership the strongest Independent in South Bucks and The Chilterns!

All the partners have invested their own money into the Wye Residential Partnership and all truly believe that our business will be built on delivering excellent service to our clients. This means you can be confident that we will deliver on all aspects of Estate Agency in an honest, open and transparent way.

**If you are looking to buy, sell or let in High Wycombe or the surrounding Chiltern villages then contact an estate agency that is motivated by your success and talk to The Wye Partnership.**

**wyeres.co.uk**

Hazlemere  
**01494 711 284**  
hazlemere@wyeres.co.uk

High Wycombe  
**01494 451 300**  
wycombe@wyeres.co.uk

Prestwood  
**01494 868 000**  
prestwood@wyecountry.co.uk

Great Missenden  
**01494 868 000**  
missenden@wyecountry.co.uk

Naphill  
**01494 565 555**  
naphill@wyecountry.co.uk

Stokenchurch  
**01494 509 377**  
stokenchurch@wyeres.co.uk

Lettings High Wycombe  
**01494 358 358**  
lettings@wyeres.co.uk

Lettings Great Missenden  
**01494 864 225**  
lettings@wyecountry.co.uk

Associated  
Park Lane Office  
**0203 368 8472**



# WELCOME TO T&T NEWS SPRING 2022

## INSIDE THIS ISSUE:

<i>South Bucks Hospice</i>	5
<i>W.I. Reports - Wye Wenches Terriers W.I.</i>	7 - 9
<i>Girlguiding</i>	11
<i>Local Faith Group News</i>	12 - 13
<i>Chameleon Singles Group</i>	15
<i>N.I.B (News in Brief)</i>	17
<i>Highbrest Academy</i>	19
<i>Steve Baker MP</i>	21
<i>Totteridge FC</i>	24 - 25
<i>Events Diary</i>	27

Hello,

Welcome to the Spring 2022 edition of T & T News.

Inside this edition of your community magazine we have news from all the regular contributors. Many groups are now meeting up once again and welcoming new members.

Our next edition will mark the 15th Anniversary of your community magazine. Things have certainly changed in those times with our on-line presence becoming more important in providing the latest news between printed editions. In the future this is likely to be the way media will go.

Many businesses have had a tough time during the pandemic with the restrictions making trading difficult. Please support our advertisers as they in turn support us by advertising.

Do make sure you let us know what is happening in your group, your road and your area. That way we can let others know and help promote all that's good in Totteridge & Terriers. Have a good spring and keep in touch with the latest news and information at [www.tandnews.org.uk](http://www.tandnews.org.uk)

**We are now part of Bucks lottery. See page 27**

Happy Reading!  
David Winterburn, Editor

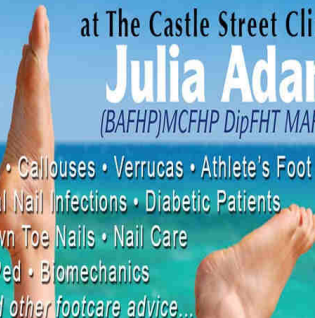


**ARNOLD FUNERAL SERVICE**  
INDEPENDENT FAMILY FUNERAL DIRECTORS  
*6 Generations of Service in the Community*  
Traditional, Alternative & Green Funerals ~ Pre-Payment Plans ~ Stonemasonry ~ Floristry  
**24 Hour Service**

<p><b>Slough</b> 273 Farnham Road Tel: 01753 535556</p>	<p><b>High Wycombe</b> 891 London Road Tel: 01494 472572</p>	<p><b>Marlow</b> 21-23 Little Marlow Road Tel: 01628 898866</p>
<p><b>Gerrards Cross</b> 38 Oak End Way Tel: 01753 891892</p>		<p><b>Beaconsfield</b> 32 Gregories Road Tel: 01494 685000</p>

## Feet Treat

at The Castle Street Clinic  
**Julia Adam**  
(BAFHP)MCFHP DipFHT MAFHP



- Corns • Callouses • Verrucas • Athlete's Foot
- Fungal Nail Infections • Diabetic Patients
- Ingrown Toe Nails • Nail Care
- MediPed • Biomechanics

*and other footcare advice...*

The Castle Street Clinic, 19 Castle Street  
High Wycombe HP13 6RU

**Tel: 07939 574789**

## AZTEC CHIMNEY SWEEP



**Brush & Vac  
Fast Friendly Service  
Clean & Tidy  
Johnny The Sweep  
All Areas Covered  
Tel: 01494 532748**

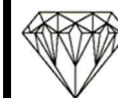
## Markland Gardening Services

**For all your general garden  
maintenance  
including  
grass cutting / edging  
hedge cutting  
weeding / planting / mulching**

**PLUS  
with 15 years experience growing  
organic fruit and vegetables,  
practical help and advice in creating  
and maintaining  
a vegetable or kitchen garden.**  
**Tel: 01494-881119**  
**Mob: 07847-111079**  
**E:markland.gardening@googlemail.com**

## Property Maintenance Services For a reliable and quality based service

- ❖ Carpentry
- ❖ Roofing Repairs
- ❖ Internal Doors Supplied and Fitted
- ❖ UPVC Facias & Soffits
- ❖ UPVC Windows & Doors
- ❖ Replacement Blown Glazing Units
- ❖ Garden Decking
- ❖ Internal/External Decorating
- ❖ Gutter Cleaning/Repair/Replace
- ❖ Shed Roof Felting & Shed Bases
- ❖ Fencing & Gates Supplied/Installed



Crystal Property Maintenance  
email:ash.craven@gmail.com  
Telephone: 07742 022987



## Volunteering could improve the quality of your own life, says South Bucks Hospice

**Do you want to make a real difference to your local community by helping others in their time of need? Yvette Hockley, the new Volunteer Coordinator at South Bucks Hospice, tells here how you can contribute.**



If I told you that doing something for just two hours a week could improve the quality of your life significantly, would you be interested? Or how about if I added that this activity would also help you to make new friends and learn new skills - and that by doing it, you would also be helping the community? It would seem too good an opportunity if you have spare time.

I am very fortunate as the new Volunteer Coordinator at South Bucks Hospice to be spreading the following message to the community: Volunteering is not only good for the people you volunteer for, but it also is good for you. I have been in post at the hospice for just a month and have seen first-hand the pleasure that volunteering brings. If you have a few hours to spare please get in contact.

There is a range of volunteering roles, and people should look for opportunities that suit their skills or interests. For instance, we are looking for people to assist in our charity shops at Bourne End and Hazlemere, or to become bereavement listening volunteers for our new telephone service.

There are also volunteering jobs for drivers, or for people to help on reception. Whatever you do, you don't need to spend hours volunteering - just a small amount of time on a regular basis will go a very long way. I volunteer in my private life and know that warm feeling that doing something for someone else to help them, without any financial reward, is a joy only known to who do so.

Just recently, I heard a volunteer at the hospice say: "This is just what I need to get the brain working again after spending so much time alone. It'll get me out and talking to people". Another told me "I wanted to do something to help people and this opportunity will make patients feel good but will make me feel good too." You only need a few minutes to make a difference to someone's life. If you are interested, please email me at [volunteers@sbhospice.org.uk](mailto:volunteers@sbhospice.org.uk)





# ATLAS

[www.atlas-direct.com](http://www.atlas-direct.com)

**TV AERIALS • SATELLITE TV • CCTV • INTERNET**

**SPECIALISTS IN:**

- **DIGITAL TV & RADIO AERIALS**
- **SKY, FREESAT, EUROPEAN SATELLITE SYSTEMS**
- **WiFi ACCESS POINTS / WiFi ENHANCEMENT**
- **CAT5 / CAT6 NETWORK POINTS**
- **TV WALL MOUNTING**
- **CCTV SYSTEMS / SMART PHONE & TABLET VIEWING**
- **RING VIDEO DOORBELL**
- **COMMERCIAL AND DOMESTIC**

**SAME DAY SERVICE**  
**CALL US NOW OR VISIT**  
**US ONLINE**

01494 444060







## Hazlemere Gardening Association Welcomes New Members!

Whatever the size of your garden, whatever you like to grow, membership of the HGA (£5 / year, or £3 for over 60s) offers the following benefits:

- A warm welcome and friendly advice
- A huge range of discounted gardening supplies
- Visits to RHS Garden Wisley and other social events
- Plant sales and annual shows
- Discounts at local garden centres and nurseries

Visit us - Barn Store, Cedar Barn, Barn Lane, Hazlemere HP15 7BQ  
 Open 10 - 12 every Sunday from February to October  
 Find us at [www.hazlemeregardening.co.uk](http://www.hazlemeregardening.co.uk)



## Wycombe Wenches WI



We are now well-established in the venue that we have used since October, and we are very grateful to High Wycombe Cricket Club for being so accommodating and helpful. Membership continues to grow, and most months bring a few new friends, most of whom then go on to join as members. We love welcoming them all, as they are very keen to get fully involved in the life of the group.

Our final meeting of last year turned into a very enjoyable Christmas party, where we played silly games, enjoyed Christmas-themed refreshments, and even practised our choral singing, when everyone joined in with a comic version of "The Twelve Days of Christmas". At the start of this year, we were very pleased to have a visit from Kamran Irani, from the local area branch of Blood Bikes. We found out a great deal about an organisation of which most of us knew nothing; Blood Bikes is a very well-organised community of volunteer motor cyclists who not only collect and deliver blood resources from hospitals, but also transfer samples, and who are developing a similar service to deliver breast milk to hospitals for babies in need. He was extremely informative, and members very much enjoyed the talk. Our February speaker was a magician, Clive Peacock, who gave us a most entertaining session with a host of magic tricks and banter. In March we were visited by Ruth Warne, who spoke about working on an African Mercy Ship, providing medical procedures to children who would normally have no access to these.

Our regular groups continue to meet, with our Monday Craft and Chat group now meeting in the John Lewis restaurant. Not a lot of crafting goes on but the coffee and chatting certainly does! The Supper Club did not meet in January, but in February we went to Historia, a Turkish restaurant. The Front Room continues to host us for our monthly cinema nights, where we have seen "Lost Daughter" and "Passing". The Book Club meets on Zoom, and we have all enjoyed "The Beekeeper of Aleppo" and "Us Three", with a different member each time suggesting the next book. Our walking group are keeping very fit by enjoying some brisk walks in the local area.

In addition, we have begun planning for a return to the additional activities that are organised, and there are now planned walking tours, theatre trips visits to stately homes and a tour of a gin distillery lined up for us to enjoy. There was a real sense of excitement when we were able to book up again for these outings at our meetings – they have been so missed over the last 2 years!

If you are interested in joining our friendly group, please contact us via the website address. We meet on the second Wednesday of each month, at the Cricket Club on London Road, High Wycombe, at 7.30pm.

Best wishes, Diane Haylor

[wycombewenches@hotmail.co.uk](mailto:wycombewenches@hotmail.co.uk)



Joining in games at the Christmas Party



Our tree in All Saints



Intrepid walkers in the cold!

**حلال HALAL**

**FIREAWAY**  
ARTISAN PIZZA IN 180 SECONDS

- CREATE YOUR OWN!
- UNLIMITED TOPPINGS
- ONE FIXED PRICE
- HOME OF THE NUTELLA PIZZA
- GLUTEN FREE / VEGAN OPTIONS
- FRESH DOUGH MADE ON SITE
- 100% HALAL

4 Priory Road (Near Priory)  
High Wycombe  
HP13 6SF  
01494 440952  
@ fireawayhighwycombe

Uber Eats JUST EAT deliveroo



## Terriers Evening W.I.

Finally, our WI lives are now almost back to normal and our Christmas party in December provided the ideal opportunity to relax and socialise with friends old and new.

We were treated to a delicious buffet, laid on by the committee, while being entertained by a young man who we have been privileged to see developing into a highly proficient saxophonist. With a program of popular melodies and Christmas songs we were soon in the Christmas mood. The party also marked the diamond jubilee of Terriers Evening and Margaret O'Connor delighted members with a splendid birthday cake.

For our first meeting of the new year, ever mindful, of possible seasonal hazards involving weather or illness, there was no pre-booked speaker with members entertaining each other with show-and-tell. Particularly revealing was Madam President's reminiscences of her exploits in her early days as a Wren in the 1960s.

Sadly, our February speaker was forced to cancel at short notice due to the loss of her dog who was going to be a central part of her presentation and whom we had been looking forward to meeting. Heroically stepping in at the last moment was Mike who told us how he became an "Accidental Actor" after retiring from his day job. One of his most exciting roles was as a stand-in, on the trampoline, for Elton John.

March's meeting will see the return of popular local speaker Jeff Rozelar who will be talking about his passion for railways in "Homeward Bound". Also, in the March meeting there will be a shortened Annual Meeting which will signal the change-over of this event from the autumn to the spring in order to align with the new financial year. Later in March our quiz team is hoping to be defending our title of Three Counties Champions in the first round of the first post-Covid competition. In April a speaker from SWOP will be talking about old photographs of Wychcombe.

Terriers Evening WI normally meets on the first Thursday of each month. For more information, please contact:  
Carol Gilliam on 01494 562843.



## HAZLEMERE LIBRARY'S WEEKLY GROUPS RETURNING IN SPRING!

Please enquire in the library or email us at  
[lib-haz@buckinghamshire.gov.uk](mailto:lib-haz@buckinghamshire.gov.uk)

[www.buckinghamshire.gov.uk/libraries](http://www.buckinghamshire.gov.uk/libraries) @BucksLibraries



## What's Going on in Girlguiding?

Rainbows, Brownies and Guides in High Wycombe District have enjoyed a variety of activities since the last time of writing.

Just before Christmas one of the Brownie units had a wonderful time watching the Pantomime in High Wycombe while other Rainbow, Brownie and Guide units enjoyed Christmas crafts, cooking and parties. Badges were also finished, and it was wonderful to see the girls feeling proud receiving them. While the girls are having fun in the weekly meetings, they (Rainbows, Brownies and Guides) also work towards badges which cover 6 themes. These are:

Know myself, Express myself, Be well, Have adventures, Take action and Skills for my future

The activities which we do in the meetings are appropriate for the age of the girls in the unit. For example, one Brownie unit has been working on a Skills for my Future badge. This includes learning skills such as how to strike a match and light a candle safely. A Rainbow unit, also working on a Skills for my Future badge learnt how to wash, peel, and prepare fruit for eating.

The New year has brought new girls into some of the units and as well as making new friends and starting their Girlguiding adventure, they will soon be making their Rainbow, Brownie or Guide promise.

However, we are on the look out for more girls to join us.

**We currently have spaces in the 3 sections: Rainbows aged 5-7 years, Brownies 7-10 years and Guides 10 – 14 years.**

We always love to welcome new members so if you are interested in your daughter joining one of the units, register your interest using the link.

[https:// www.girlguiding.org.uk/information-for-parents/register-your-daughter/](https://www.girlguiding.org.uk/information-for-parents/register-your-daughter/)



You will be able to see the units in the area and find out where they meet. Once you have registered your daughter, one of the local leaders will then contact you with more information. We are also on the lookout for more leaders and helpers. If you are interested or would just like some more information, please contact either: Julia Sparks - [julia.sparks@gmail.com](mailto:julia.sparks@gmail.com) or Nina Sparks - [minisparkyn820@yahoo.com](mailto:minisparkyn820@yahoo.com). If you would like to find out more about what Girlguiding is all about, do look at the national website: <https://www.girlguiding.org.uk/>



## HELLO FROM JO

Since I first wrote about the Terriers Community Garden 2 years ago, we have all been on a very difficult journey, and it has been a 'stop start' project. However, I am delighted to let you know that progress has been made, with help from various people and groups in the community, and there has been a lot of fun to be had so far!

Phase 1 of clearing the ground has been completed, and so has Phase 2, of erecting the first raised beds and a shed; and at our Harvest Festival in the Autumn we gave thanks for the modest first fruits of everyone's help.

As part of the **Queen's Platinum Jubilee**, all are welcome to the **Official Opening of Terriers Community Garden on Sunday 5<sup>th</sup> June**, with planting of Commemorative Jubilee fruit trees and a **BBQ**. Before then there is plenty still to be done, so, why not come along and join in Saturdays at 10am on: March 12<sup>th</sup>, April 2<sup>nd</sup> and April 30<sup>th</sup>. Contact Lyn at: [lyngooch@gmail.com](mailto:lyngooch@gmail.com) if you would like more details or just turn up!



The positive impact of spending time in creation is well documented, and it's a fun and healthy way to meet new people, keep active and have fun as an individual, or family. We are also planning to create a quiet space, and areas to encourage bees, bugs and butterflies, and if you would like to donate a bench; or a plant, or a tree, as a living memorial for a loved one, please contact Lyn or leave a message at the hall office on 01494 462911.

St Francis is a friendly and inclusive church where all are welcome, and details of weekly and Easter services can be found below:

<b>Sunday</b>	<b>Holy Communion 8.00am and 10.00am</b>
<b>Wednesday</b>	<b>Holy Communion 10.30am</b>
	<b>Good Friday 15<sup>th</sup> April at 10am in the hall.</b>
	<b>Easter fun, stories and activities.</b>
	<b>For All Ages!</b>



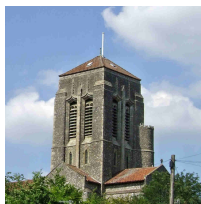
**Easter Sunday Holy Communion 8.00am and 10.00am**

All are welcome to join services in church or online [www.facebook.com/stfrancislivestream](https://www.facebook.com/stfrancislivestream)

*Blessings, Jo*

Revd Joanna Gallant: [teamvicar@terrierschurch.org.uk](mailto:teamvicar@terrierschurch.org.uk)  
Tel: 01494 297933 [www.terrierschurch.org.uk](http://www.terrierschurch.org.uk)

## Local Faith Group information for Totteridge & Terriers



### St Francis Church

Located on Amersham Road in Terriers. [www.terrierschurch.org.uk](http://www.terrierschurch.org.uk)  
 Revd Joanna Gallant: [teamvicar@terrierschurch.org.uk](mailto:teamvicar@terrierschurch.org.uk)  
 Office email: [churchoffice@terrierschurch.org.uk](mailto:churchoffice@terrierschurch.org.uk)  
 Tel: 01494 297933 Office Tel: 01494 462911  
 Facebook: Friends of St Francis Terriers

### Totteridge Baptist Church

Totteridge Baptist Church Located on Hillary Road, High Wycombe, HP13 7RA  
 Our services are held every Sunday at 10.30am - All are very welcome.  
 Tel: 07760 651953  
 E-mail: [totteridgebc.secretary@gmail.com](mailto:totteridgebc.secretary@gmail.com)  
 Facebook: <https://www.facebook.com/totteridgebaptist.church>  
 Instagram: totteridgebaptist

### St Andrews Church (C of E)

Located on Hatters Lane, High Wycombe HP13 7NJ.  
 Services are every Sunday at 10:15am.  
 Tel: 01494 - 529668

### St Wulstans Catholic Church

Located on Hollis Road, Totteridge, HP13 7UN  
 Regular Masses both on Sunday's and at other times during the week.  
 Tel: 01494 - 438300

### St Augustines Church (Catholic)

Located on Amersham Hill, High Wycombe  
 There are regular Masses on Saturday's, Sunday's and during the week.  
 Tel: 01494 - 523969

### Totteridge Mosque

(Wycombe Islamic & Mosque Trust Limited)  
 24 Totteridge Road, High Wycombe, HP13 6EB Tel: 01494 - 513440  
 Also Muslim Education Centre at 4 The Parade, Totteridge Drive  
 Tel: 01494 - 522786

### Wise (Wycombe Islamic Society)

St Marks Close, High Wycombe, HP13 6GN  
 Tel: 01494 - 259194  
 Web: [www.wise-web.org](http://www.wise-web.org)

## At Vets4Pets High Wycombe

*We are proud of our*

- Convenient location and opening hours
- Highly trained vets and nurses
- Modern medical and surgical facilities
- Affordable healthcare plans, like our Vac4Life
- We work with you to keep you fully informed on what treatments your pet needs and why

Call **01494 443 075** or visit **vets4pets.com**



### Vets4Pets High Wycombe

133 Amersham Road, High Wycombe, HP13 5AD

Opening times: 8.30am - 7pm Mon-Fri, 9am - 12pm Sat



**Vets4Pets**  
*Putting your pet first*

## Hire Cedar Barn or The Stables Hazlemere

### Converted Barn and The Stables



Each room holds 60 people

Suitable for meetings, parties and fitness groups etc

Cost: £18 per hour Cedar Barn

Cost: £14 per hour The Stables

Please call Rachel on 01494 715548

or email [bookings@hazlemereparishcouncil.org.uk](mailto:bookings@hazlemereparishcouncil.org.uk)

or visit [www.hazlemereparishcouncil.org.uk](http://www.hazlemereparishcouncil.org.uk)

## CHAMELEON SINGLES GROUP



At our AGM in January, we started looking forward to organising more events this year where members can meet up both inside and outside. Cautiously we look forward to 2022 without the restrictions of the past due to the pandemic which have limited our activities. We are planning to re-start our days out over the spring and summer months as well as doing more of the events which members enjoy such as walks and meals out. A few days away on a short break is a possibility too!

We will continue to have a social evening via Zoom once a month for those who are unable or do not wish to go out at present. Our Friday Lunch Club has moved from the first to the second Friday of the month. This works better with the calendar where on one or two occasions the Pub Night held on the last Thursday of the month was on the day before the lunch event.

Our new programme for March and April is already beginning to fill up and we were able to add a few extra events to our February programme. This included an Elvis tribute night and a walk in West Wycombe Park to see the early season snowdrops. We are currently looking forward to taking part in a Quiz Night and early spring would not be the same without the annual pancake night held at a member's home. As always, our members put forward and host all events run by Chameleon which gives a variety of events to suit almost everyone in our bi-monthly programme.

If you are single, 40-60's, looking for a great social life and new friends then why not give us a try? There are no strangers at Chameleon, just new friends to be made. We have several local people from Totteridge, Terriers, Bowerdean and surrounding areas and you would be very welcome too. To find out more call our membership secretaries Terrie on 01494 445816, Trevor on 01494 529067 or e-mail: [info@chameleonsingles.org.uk](mailto:info@chameleonsingles.org.uk). Visit us on-line at [www.chameleonsingles.org.uk](http://www.chameleonsingles.org.uk) for more information and our current programme or connect with us through Facebook.

Find us on 

## T&T NEWS NEEDS YOU!

Distributed 4 times a year T&T News adverts are from £14 per issue B&W / £17 Colour.

See page 26 for rates or call or e-mail:  
01494 463107 / [editor@tandtnews.org.uk](mailto:editor@tandtnews.org.uk)

We need distributors in several local roads too!  
Please contact us if you can help out.

## David Winterburn Marketing & Media

In-house newsletters,  
Local promotional work  
Flyers for the small business  
RSL Radio service management  
Training and Production

**Tel: 01494 – 463107**  
[dwinterburn.fm@tiscali.co.uk](mailto:dwinterburn.fm@tiscali.co.uk)

## Chiltern Stroke Club

Had a stroke?  
or a family member had a stroke?

**Come along and join us  
Tuesdays 2pm-4pm  
in Brooks Lounge  
Amersham Road, Hazlemere**

We are a local network of The Stroke Association; support and social group for stroke survivors and their families. Weekly exercise led by a qualified rehabilitation teacher, specialist speakers and social activities.

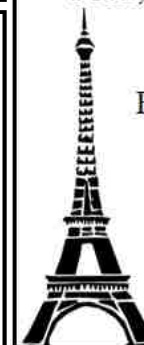
Contact: Adele 01494 728537  
[www.chilternstrokeclub.co.uk](http://www.chilternstrokeclub.co.uk)

## FRENCH TUITION

ALL LEVELS  
WELCOME

GCSE, A-LEVEL, BEGINNERS  
AND ADULTS

For further details please  
telephone Fabienne



**01494  
815749**

## ***D J Coles Property Services***

**Professional High Standard**  
Established in 1999

- Interior & Exterior Decorating
- Paper Hanging
- Coving
- Carpentry & Kitchen Installations
- Laminate & Wood Flooring
- Door Hanging
- Fencing & Decking
- Loft Insulation & Boarding
- Guttering
- General Property Maintenance & Improvements

Free Estimates  
Competitive Rates

**Mobile:** 07747 783015  
**Email:** [djcolespropmain@yahoo.com](mailto:djcolespropmain@yahoo.com)

## N.I.B. (News in Brief)

### W.A.D.S.A.D. (Wycombe & District Sports Association for the Disabled)

W.A.D.S.A.D. has now restarted and is running sessions once a month at the Wycombe leisure Centre. Sunday evening 7 to 9pm there will be football, swimming, new age curling, badminton and basketball. To check dates and times look at the Wadsad Facebook page or call 01494 438007.

### Healthy Minds Buckinghamshire

Healthy Minds Bucks aims to improve access to psychological therapies for all over 18's. If you are feeling nervous, unable to stop worrying, have little interest in doing things or are feeling down then they may be able to help. You can find out more by visiting the web site at:

[www.healthymindsbucks.nhs.uk](http://www.healthymindsbucks.nhs.uk)

Or by calling 01865 901600

Or text TALK and your name to 07798 667169



### Come Back to Learning

Did you learn with us before Covid but have not returned to your class? If so we are offering learners the opportunity to return after February half-term and pay the pro-rata fee.

There are also lots of new courses available to those who want to start learning including basic skills, crafts and wellbeing. To find out more visit: [www.adultlearningbc.ac.uk](http://www.adultlearningbc.ac.uk) or call 01296 382403.

### Thames Valley Police Community Funding

£100,000 is being made available for local community and voluntary groups following the sale of items by Police in multiple operations, which cannot be returned to their rightful owners. Applications for this round closed on 4th March and will be considered by the Chief Constable and Crime Commissioner. A presentation ceremony for successful applicants will be held in April 2022.

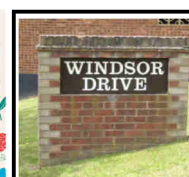
Old for new Like for like  
**Ev's garden fingers**  
 Gates made to measure  
 For a quote call:  
**07508047258**

**Come Dancing With Me**

Regular classes return soon for Beginners and Intermediates

Latin & Ballroom + First Dances

Reserve your place now for the new groups  
**0787 353 8709**  
[comedancingwithme.co.uk](http://comedancingwithme.co.uk)



## TENDERS INVITED FOR WORKS

### WINDSOR DRIVE ESTATE

Works include:

Building maintenance

Cleaning

Electrical

Gardening

Financial & administration services

For a full Tender Document contact  
 David Tel: 01494 463107

Mob/Text: 07762 003055

E-mail: [david@windsordrive.co.uk](mailto:david@windsordrive.co.uk)



INDEPENDENT  
 FINANCIAL  
 ADVISERS

## Can you afford to retire?

Retirement is one of the most important moments in most people's lives. It should also be one of the happiest. However, before getting there, there is a minefield of decisions to take.

We're a Chartered firm of financial planners. You can be confident you are dealing with a firm that is wholly committed to providing you with the best possible independent advice, service and support.



Call 01494 461221 email [robert.clarke@acpifa.co.uk](mailto:robert.clarke@acpifa.co.uk) | [www.abbottclarkeifa.co.uk](http://www.abbottclarkeifa.co.uk)

The Abbott Clarke Partnership Ltd is authorised and regulated by the Financial Conduct Authority.



## Forest School make an impact in local community

Forest School at The Highcrest Academy has been running at full speed since April 2020 when Alice Watson, our Forest School Practitioner took over the role. It aims to improve students' confidence, problem-solving abilities, resilience, team building and physical and mental wellbeing through a variety of activities. Forest School students encompass those from SEN and those with challenging behaviour or mental health needs in all year groups.

Our Forest School site, located on the school grounds currently has a small wooded area with a shed, a fire pit, a bug hotel, rope swings and slack lining for students to use within their Forest School lessons. Recently, Madam Mayor of High Wycombe kindly spent the day with us and Chiltern Rangers planting 210 native trees to form a hedge around the area, kindly donated by Origin of Cressex.

We have worked in conjunction with Chiltern Rangers, a local conservation company who mentor our students and have recently carried out woodland management and litter picking in Highfield and Hangingcroft Woods, Keep Hill Woods, the River Wye, Kingsmead Rec and St Paul's Church in West Wycombe. As part of their structured programme, students have learned how to build a 10-minute fire safely, made bird feeders and regularly take part in wild cooking.

One student said, "Forest school is an amazing experience. It's taught me how to communicate with people." Another said, "It's helped me be more confident." Our aim is to create a tranquil area with a wildflower meadow to attract bees and butterflies, a dug out seated fire pit area, a pond with bench and also a lean to shed for wood storage with a sink. We would also like to add a canopy for over the fire and a picnic bench that students can use for eating after they have been cooking on the fire.

We are looking for your help in terms of donations of equipment, from hoses to bow saws, loppers, axes, kindling and firewood... or use of larger equipment for the day such as diggers and rotavators. We also need help building the lean to shed, so if you feel up to the challenge, please let us know, our students would really appreciate it.

If you have expertise in woodland management, construction, pond management or something similar and would be interested in mentoring our students we would love to hear from you. If you can help us with any equipment or in any other way, big or small, please email Alice at [awatson@highcrestacademy.org.uk](mailto:awatson@highcrestacademy.org.uk)



**Latest news from local charity Scannappeal, proud supporters of Buckinghamshire Healthcare NHS hospitals.**

### Scannappeal Anniversary Celebration

2022 marks the 35th anniversary of Scannappeal. We are proud to have been fundraising to support Buckinghamshire Healthcare NHS hospitals for 35 years. In this time, we have achieved so much, but none of it would have been possible without the unfaltering support of our community.

We have lots of wonderful events taking place, with a calendar of 35 events planned by the end of the year. Please get involved in our special year and help make this a year to remember.



### 35 Fundraising Pledges

We are looking to find 35 supporters to pledge their support this year by organising an event or taking on a challenge.

Could you organise a coffee morning, a quiz, a raffle, an Easter Egg hunt or set up a world cup sweepstake in aid of Scannappeal? Or maybe take on a personal challenge by running, cycling, swimming or even jumping out of an aeroplane to help fundraise. We are looking to follow 35 supporters on their individual quests.

We want to share your stories and understand why you chose your challenge and what Scannappeal means to you. Towards the end of the year, we will look through all the challenges and then invite some lucky people to join us in a very special celebration to thank you for all your hard work and achievement.

Set yourself an event/challenge, commit to a date and then email the details to: [bht.info.scannappeal@nhs.net](mailto:bht.info.scannappeal@nhs.net). We will then add you on our 35 For 35 Honours Board and follow your progress.

### Open Gardens

Visit our selection of beautiful privately owned gardens not normally open to the public. Each one offers something different from kitchen gardens to manor houses to ponds and wildlife.



**Jordan's Group**  
10 April  
2-5pm | £7



**Bledlow Manor**  
20 May  
2-4.30pm | £7



**Penn House**  
22 May  
2-5pm | £10 inc  
tea & cake

To book tickets and view more gardens visit [www.scannappeal.org.uk/events](http://www.scannappeal.org.uk/events)

Scannappeal is a local charity that raises funds to purchase life saving revolutionary medical equipment for Amersham, Stoke Mandeville, Wycombe NHS hospitals, serving people living in Bucks and the surrounding areas.

T - 01494 734161 W - [scannappeal.org.uk](http://scannappeal.org.uk)

Registered Charity  
No. 296291





## Steve Baker MP

Many people are concerned about the rise in inflation and the effect this has on the cost of living. In my last article for T&T News I spoke about measures in the autumn Budget to help those finding it hard to pay bills. Under the Government's Household Support Fund, Buckinghamshire Council have been awarded just under £2.4m to support those most in need up to March 2022. The fund requires 50% to be spent on families with children and up to 50% on households experiencing or at risk of poverty. If you need help contact the Council on 01296 531151.

In addition, the Council's Helping Hand service continues to help individuals and families in need, those on low incomes and those experiencing a financial crisis or emergency. It can offer practical help with essentials such as food, water and energy bills, as well as providing emotional and wellbeing support. Buckinghamshire Council will be distributing digital food vouchers to those eligible for free school meals, two-year-old funding or early years pupil premium support. These are available during the February half term and Easter holidays.

I know how frustrating it is to have insufficient broadband speeds at home, and I want to assure people living locally this is something that is being looked at seriously. Government has promised £5 billion to subsidise the roll-out of gigabit-broadband to the 'hardest to reach' premises in the country that will not be reached by private investment. The funding programme is called Project Gigabit, and is delivered by Building Digital UK with those on the lowest broadband speeds prioritised where possible. The scheme works in phases and Buckinghamshire is in Phase 2. The first stage, where there was an Open Market Review for commercial broadband providers, closed in September last year. The second stage allowing the public to feed into the process closed on 4th March.

I have also been in touch with Swish Fibre who are currently rolling out full fibre broadband in villages around High Wycombe to ask if they would consider upgrading the broadband infrastructure in the town. Swish Fibre has said it does not currently have plans for Totteridge. However, as it would soon be building nearby in Hazelmere, it would be happy to consider extending its network if there was a lot of interest from residents. If you are interested in having full fibre broadband at home please let Nick Bratt at Swish know. His email is Nick.Bratt@swishfibre.com

Some local residents have concerns about vehicles left on the highway for long periods of time, seemingly undriven, and sometimes causing an obstruction or eyesore. The issue usually centres on whether the vehicle has a valid MOT or road tax. Depending on circumstances responsibility falls either to the DVLA, local council or the police to remove. Every vehicle registered in the UK must be taxed if used or kept on a public road. If the vehicle is kept off-road it must either be taxed or have a SORN in force.

If you would like to get in touch, please email: [steve.baker.mp@parliament.uk](mailto:steve.baker.mp@parliament.uk). If you would like my help with a particular urgent issue, please phone my office on 01494 448408.



## Equity Release Accessing your property wealth

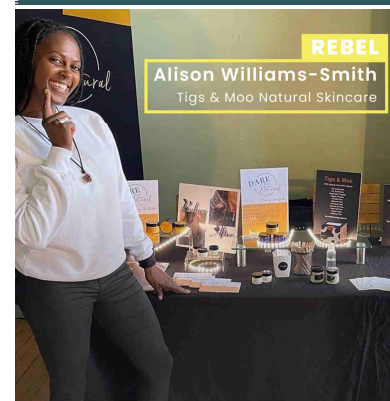
25 YEARS

Independent Financial Advice

Contact us: 01494 817151 | [vanessa@fmifa.com](mailto:vanessa@fmifa.com) | [www.fmequityrelease.com](http://www.fmequityrelease.com)

Penn Barn, By the Pond, Elm Road, Penn, Bucks HP10 8LB

Financial Management is a trading title of Philip Harper LLP which is authorised and regulated by the Financial Conduct Authority



REBEL

Alison Williams-Smith  
Tigs & Moo Natural Skincare

## Free Virtual 10 Day Course on How to Start a Business

*"If it wasn't for Rebel I wouldn't have got started. They gave me the confidence to start my business."*

– Alison Williams-Smith, Tigs & Moo Natural Skincare  
Rebel Business School Attendee

It's never been more possible to test a business idea without spending money. **Let us show you how.**

Join us online on Zoom from 21 March – 1 April  
Find out more and sign-up:

**[therebelschool.com/high-wycombe](http://therebelschool.com/high-wycombe)**

Funded by

**Red Kite**  
Community Housing



Since our very first event, not a single person has paid to attend a Rebel Business School. The course is completely free as it has been sponsored by local authorities.

**We make business possible.**



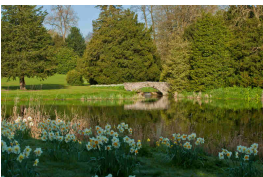
## Spring Daffodil Walk 2022

Sunday 20th March 10am until 3pm

Come and join us for a Spring Daffodil Walk at West Wycombe Park. This is a lovely opportunity for families to walk in the beautiful surroundings, around stunning lakes, and woodland paths, with activities for everyone to enjoy. Stroll at your leisure and enjoy the wonderful display of spring daffodils.

**Tickets £5 per adult / £3 per child under 16** Tickets are available to buy online or on the day. All tickets include a daffodil bulb that you can take home with you to plant, which can be planted in your garden in memory of a loved one.

There will be a children's treasure hunt available to buy on arrival at the park and tours of the grounds, so you can find out more about the history of the 18<sup>th</sup> century landscape parklands. We also have several activities happening in the West Wycombe village hall which will include a tombola, stalls selling locally produced crafts, live music, and refreshments such as a selection of cakes, tea, coffee, and soft drinks which will be available to purchase on the day.



To find out more about the event and buy your ticket go to [renniegrove.org/springdaffodilwalk](http://renniegrove.org/springdaffodilwalk) All money raised from this event for Rennie Grove Hospice Care will help keep families together, at home, making every moment matter.



Since my last article we are very pleased to have inducted 2 new members to our club. A big welcome to Ann and Caroline. In December we held our annual Christmas lunch in which partners and friends were invited. After a delicious lunch, we were entertained by Louise Child and her keyboard. At our lunch members very kindly and generously donated Christmas food items to be given to the one can food trust.

In February we held our annual charity auction & raffle. This is our main fund-raising event each year. Family, friends, and members from other clubs in district nine joined us at our charity lunch. After a delicious lunch we were treated to a splendid talk by Lynda Macleod from Christies Auction House. Following the talk, Lynda became our auctioneer and sold the auction lots. This was followed by our raffle and together made over £1,100, which is a tremendous boost to our charity this year.

We welcome new members, please contact our membership officer Sue Creed on 07719 719636. We meet the first Monday of each month at the Holiday Inn.



TOTTERIDGE FC has provided football to the local youth in the community since 1996. For more information and contact details please visit our web site – [www.totteridgefc.co.uk](http://www.totteridgefc.co.uk)

## YOUR LOCAL COMMUNITY FOOTBALL TEAM!

**EVENTS, ON AND OFF THE PITCH** Our under 9s and under 10s took to Adams Park this weekend (19<sup>th</sup> Feb) to watch the mighty Wycombe Wanderers take on Cheltenham Town. This was organised through WWSET, who are Wycombe Wanderers educational charity. The team spent the morning at Cressex training pitches where they were coached by the WWSET team, and later on went to Adams Park to watch a cracking 5-5 draw. It was a great turn out and the children had a wonderful time. Many of the children only ever experience Premier League football, but it's good for the children to experience a local game at a lower level where they can get a lot closer to the action.



Figure 1 – U9s and U10s at Cressex 4G Pitch with WWSET

The U15s also have had cup glory and reached the final of the Challenge Cup. The manager, Tak, reached the same point last season with the now U16s. Unfortunately due to COVID the cup final was cancelled, but Tak hopes to reap the rewards this year and bring back the trophy.



Figure 2 – The U15s celebrating their win vs Chesham United

The other teams are having great success as well with the U11s hoping they reach the cup final. The U12s and U10s are doing great in their respective leagues, winning games and scoring goals. We hope next year that we can split the U10s into two and run two smaller sides.

**U8s**, we have a couple of players already and some wanting to join, but we would want to separate them from those a year older, but we would need a volunteer! This can be coaching on a Saturday without league games if necessary. Please get in touch with Oliver Witney on [oliver.witney@gmail.com](mailto:oliver.witney@gmail.com) or see below for other contact details.

Jon, the **U12s** manager is also looking for a few additional players ready for when the team go up to 11-a-side, so if you have children of any ability that are in Year 7, then please contact Jon using the contact details below.

If you are interested in joining, either as a player or volunteer, please contact club secretary Simon Kearey by email [simonkearey@gmail.com](mailto:simonkearey@gmail.com) or call the appropriate team manager:

Under 8's – N/A –  
 Under 10's – Michael Chivers 07493 552335  
 Under 11's – Carl Robinson 07397 561923  
 Under 12's – Jon Fairless 07723 314419  
 Under 13's – Khalid Machmoum 07834 586786  
 Under 15's – Tak Aziz 07838 579217  
 Under 16's – Peter Matthews 07718 265760



## Cycling in South Buckinghamshire

Join your local Cycling UK groups this spring

In South Buckinghamshire we have four riding groups: Aylesbury, Chiltern Hills, Midweek and Thames Valley. Full details of all our group rides, coffee meets and socials are on the website. There is sure to be something for everyone of all ages who wants to get out on their bike. Both pedal bikes and e-bikers welcome. If you do not wish to do a full ride then you are welcome to come part way or join one of our Friday or Sunday coffee pots.

To find out more visit our web site below or call one of our secretaries.

[www.southbuckscycling.org.uk](http://www.southbuckscycling.org.uk)

Contact the Chiltern Hills Rides Secretary Cilla Gosnell on 01494 863679 or the Midweek Secretary, Ray Bennett E: [midweek.sec@southbuckscycling.org.uk](mailto:midweek.sec@southbuckscycling.org.uk)

More general information about Cycling UK and membership can be found at [www.cyclinguk.org](http://www.cyclinguk.org)

## Totteridge and Terriers News

68 Windsor Drive  
 High Wycombe HP13 6BL

Telephone: 01494 463107  
 Text / Mobile: 07905 888098  
 E-mail: [editor@tandnews.org.uk](mailto:editor@tandnews.org.uk)  
 Web: [www.tandnews.org.uk](http://www.tandnews.org.uk)

**BSB PRINT** Printed by: BSB Print  
 Doncaster, South Yorkshire  
 Tel: 01302 - 320324

Print Run: 3,750 copies



Find us on 

T & T News is published four times a year in March, June, September and December. We aim to get the magazine distributed by mid month of issue. In order that we can achieve this deadline we need your articles and advertising as early as possible. Our deadline for the summer 2022 edition is 20th May.

We thank all our advertisers and contributors for their support. However T & T News cannot endorse any product or service contained within this magazine. You are advised to check details of all goods and services offered. All contributions are accepted in good faith and opinions expressed are not necessarily that of the editor or T & T News.

That's about it...Join us again in June 2022. In the meantime you can catch up with the latest news on the web at

[www.tandnews.org.uk](http://www.tandnews.org.uk)

## Index to Advertisers

Abbott Clarke Partnership	p.18	DJ Coles Property Services	p.16
Arrow Taxis	p.28	Feet Treat	p.4
Arnold Funeral Service	p.3	French Tuition	p.16
Atlas	p.6	FMIFA Equity Release	p.22
Aztec Chimney Sweep	p.4	Hazlemere Gardening Assoc	p.6
Cedar Barn & Stables	p.14	Markland Gardening	p.4
Come Dance With Me	p.18	Vets 4 Pets	p.14
Crystal Property Maintenance	p.4	Windsor Drive Tenders	p.18
David Winterburn M&M	p.16	Wye Residential	p.2
Ev's Garden Fingers	p.18		

## 2022 Advertising Rates:

B & W - Mini Ad £14 / £25 Quarter Page / £45 Half Page

Colour - Mini Ad £17 / £32 Quarter Page / £60 Half Page / £110 Full Page  
 (Full page adverts subject to availability—Summer 2022 deadline is 20th May)

## T & T News Events Diary

### Wednesday 8th March

Wycombe Wenches W.I. Meeting 8pm Totteridge Community Centre

### Sunday 20th March

Rennie Grove Daffodil Walk in West Wycombe Park 10am to 3pm

Entry is £5 adult / £3 children under 16. There will be tours and activities taking place, also teas, stalls, tombola and cakes in the Village Hall.

### Thursday 7th April

Terriers W.I. Meeting

### Wednesday 13th April

Wycombe Wenches W.I. Meeting 8pm Totteridge Community Centre

### Sunday 15th April

Messy Church at St Francis Church, Amersham Road

Easter fun, stories and activities for all ages!

### Thursday 5th May

Terriers W.I. Meeting

### Wednesday 11th May


Wycombe Wenches W.I. Meeting 8pm Totteridge Community Centre

Totteridge and Terriers News  
T & T NEWS

# Play The Lottery

To Help Our Fundraising Go Swimmingly In

# 20



PLAY NOW [www.buckinghamshirelottery.co.uk](http://www.buckinghamshirelottery.co.uk) & search for T&T News

Thanks for your support — Supporters must be 16 years of age or older

BUCKINGHAMSHIRE  
LOTTERY



**ARROW TAXIS**

**WHEELCHAIR ACCESS VEHICLES**  
**MINI BUSES**  
**CORPORATE ACCOUNTS**  
**LOCAL & LONG DISTANCE**  
**ALL MAJOR AIRPORTS**  
**CONTACT NUMBER**  
**01494 474764**

 [INFO@ARROWTAXIS.NET](mailto:INFO@ARROWTAXIS.NET)  
 **SEARCH FOR US ON FACEBOOK**