

T & T NEWS

THE COMMUNITY MAGAZINE FOR
TOTTERIDGE & TERRIERS

Summer
2025

Pubs in decline?

It looks like the Beech Tree has closed once again and it does raise the question over the viability of local pubs. The big screen outside on the lawn did see a number of people at the pub to watch football but perhaps the takings did not reflect this?



A little further away from our area the White Lion at Cryers Hill has closed after some mortar fell from the chimney. This was some time ago and now looks like another pub to close maybe permanently.



We still have the renamed Dolphin Eye in Totteridge open by the common offering a bar and Indian food but beyond this choices locally are getting limited.

T & T News is now digital! From this edition we will no longer be an in-print magazine after 18 years. You can still read your copy on-line at: tandnews.org.uk or subscribe by e-mail: editor@tandnews.org.uk with "Subscribe 18+" or Subscribe under 18" in the subject line.

See inside for all your community news from Totteridge & Terriers.

The Wye Partnership



It's our business so we care.

The Wye Partnership gained their knowledge and developed their expertise within the most successful estate agents in High Wycombe. On witnessing the take over of these long established companies by nationwide chains we recognised the need for the retention of a local and independent service. Our recent merger makes the enlarged Partnership the strongest Independent in South Bucks and The Chilterns!

All the partners have invested their own money into the Wye Residential Partnership and all truly believe that our business will be built on delivering excellent service to our clients. This means you can be confident that we will deliver on all aspects of Estate Agency in an honest, open and transparent way.

If you are looking to buy, sell or let in High Wycombe or the surrounding Chiltern villages then contact an estate agency that is motivated by your success and talk to The Wye Partnership.

wyeres.co.uk

Hazlemere
01494 711 284
hazlemere@wyeres.co.uk

High Wycombe
01494 451 300
wycambe@wyeres.co.uk

Prestwood
01494 868 000
prestwood@wyecountry.co.uk

Great Missenden
01494 868 000
missenden@wyecountry.co.uk

Naphill
01494 565 555
naphill@wyecountry.co.uk

Stokenchurch
01494 509 377
stokenchurch@wyeres.co.uk

Lettings High Wycombe
01494 358 358
lettings@wyeres.co.uk

Lettings Great Missenden
01494 864 225
lettings@wyecountry.co.uk

Associated
Park Lane Office
0203 368 8472



From Town to Country

WELCOME TO T&T NEWS SUMMER 2025

INSIDE THIS ISSUE:

<i>South Bucks Hospice</i>	5
<i>Terriers W.I.</i>	9
<i>Girlguiding</i>	11
<i>Inner Wheel Club</i>	13
<i>Chameleon Singles Group</i>	15
<i>Tony Green 25 years on</i>	19
<i>Faith Group News</i>	20
<i>Emma Reynolds MP</i>	25
<i>Sports—Totteridge FC & Cycling</i>	28 29
<i>Events Diary</i>	31

Hello,

Welcome to the Summer 2025 edition of T & T News.

This marks our move to digital distribution, something we trialled way back in 2020 during the Covid pandemic. With the increasing costs of printing, fewer advertisers and getting new volunteers for distribution now seems the right time to take the community magazine into the future!

Thank you to all who have visited our web site. The number of visitors has grown substantially since the beginning of the year and we now have a growing number of subscribers.

As always we welcome your feedback and input to the community magazine. Please do let us know your thoughts, news and information.

In this edition we have all our regular contributors and welcome more from the growing number who now visit:

www.tandtnews.org.uk

Have a great summer and enjoy the warmer days ahead reading your edition of the community magazine.

David Winterburn, Editor

High Wycombe 891 London Road Tel: 01494 472572	Beaconsfield 32 Gregories Road Tel: 01494 685000
Head Office Blackwell Heath 24 White Pit Lane Tel: 01494 952288	Marlow 21-23 Little Marlow Road Tel: 01628 898866
Gerrards Cross 38 Oak End Way Tel: 01753 891892	Farnham Common 4 The Broadway Tel: 01753 535556



ARNOLD FUNERAL SERVICE

INDEPENDENT FAMILY FUNERAL DIRECTORS

6 Generations of Service in the Community

Local Direct Cremation Available

Traditional, Alternative & Green Funerals – Pre-Payment Plans – Stonemasonry – Floristry

24 Hour Service

www.arnold-funerals.co.uk



ATLAS

www.atlas-direct.com

TV AERIALS • SATELLITE TV • CCTV • INTERNET

SPECIALISTS IN:

- DIGITAL TV & RADIO AERIALS
- SKY, FREESAT, EUROPEAN SATELLITE SYSTEMS
- WiFi ACCESS POINTS / WiFi ENHANCEMENT
- CAT5 / CAT6 NETWORK POINTS
- TV WALL MOUNTING
- CCTV SYSTEMS / SMART PHONE & TABLET VIEWING
- RING VIDEO DOORBELL
- COMMERCIAL AND DOMESTIC

**SAME DAY SERVICE
CALL US NOW OR VISIT
US ONLINE**

01494 444060





REPAIR

BIN IT? NO WAY!



WHAT DO YOU DO WITH a cd player that no longer opens? a toaster that no longer works? a sweater with moth holes?

REPAIR CAFE IS repairing broken items together, professional advice, encounters and inspiration

COSTS?
A voluntary contribution

Hazlemere Repair Cafe
Hazlemere Community Centre
Rose Avenue
HP15 7UB

4th Saturday of each month (not December)
10-1 (last orders 12.30)

e: hazlemere.repaircafe@climateactionnow.uk

CLOTHES FURNITURE ELECTRICAL APPLIANCES TOYS BICYCLES

Property Maintenance Services

For a reliable and quality based service

- ❖ Carpentry
- ❖ Roofing Repairs
- ❖ Internal Doors Supplied and Fitted
- ❖ UPVC Facias & Soffits
- ❖ UPVC Windows & Doors
- ❖ Replacement Blown Glazing Units
- ❖ Garden Decking
- ❖ Internal/External Decorating
- ❖ Gutter Cleaning/Repair/Replace
- ❖ Shed Roof Felting & Shed Bases
- ❖ Fencing & Gates Supplied/Installed



Crystal Property Maintenance
 email: ash.craven@gmail.com
 Telephone: 07742 022987



South Bucks Hospice Provides Services for the Bereaved

Bereaved people trying to come to terms with their loss are being urged to make use of a free service run by local South Bucks Hospice. The charities telephone Bereavement Listening Service, described by one volunteer as a 'lifeline' for some people, has been running successfully for three years and now has a team of seven bereavement listeners.

The aim of the initiative is to support local bereaved people through regular conversations with trained volunteers for up to three months after a loss. To qualify to use it, you need to either live in South Bucks or have a GP here and have lost a loved one to a prolonged, life-limiting illness.

Juliette Coffey, Head of Individual and Family Support at the hospice based in High Wycombe, appealed this month for people to take advantage of the service. She stressed that that self-referrals are possible and that spaces are currently available. She explained: "After losing a loved one from a prolonged advanced life-limiting illness, the processing of all that has happened and the hole felt by the loss leaves a mass of emotions to contemplate. It takes a lot of time to adjust to any sense of new normal and to express feelings. "This is where our South Bucks Hospice team of bereavement listeners can help support and offer an understanding ear. No one should suffer alone so please do reach out to us at South Bucks Hospice if your GP is in our catchment area. We would really love to help."



Kathy Freyer, a social worker by profession, who is one of the seven bereavement listeners, said: "It is an extremely important service. A lot of people have support from their families but, for instance, there are some who don't have a lot of close contact with people so having a listener contacting them once a week at least gives them consistency. They know there is somebody at the end of the phone to check in with them. It is a lifeline to some people." Kathy, a former team manager for children's services at Buckinghamshire County Council, added that there are enormous benefits to the listener as well as the bereaved person. "It gives me a sense of comfort as well if I know that I can make a difference to somebody's week and that it just might brighten their day in some way," she said.

Cont. P.7



Are you retired or about to retire from the NHS or social care?...

...Want to keep up with your friends and make new friends with other NHS and social care staff and enjoy a variety of additional benefits and offers? Then the NHS Retirement Fellowship may be for you!

The Fellowship provides social, educational and welfare opportunities across the country with a number of additional, specially tailored benefits.

You can find out more by:

Tel: **01305 361 317**

Email: **info@nhsrf.org.uk**

Or visit our website at:

www.nhsrf.org.uk

Local branches run across the country providing a range of additional social activities including trips out, theatre visits, talks with interesting local speakers.

You can find out more about your local branch:

Wycombe and Amersham

We meet at Holmer Green Village Centre on the second Wednesday of the month. 1.30 – 4.00pm

Annual membership £30, plus £2.50 on the door.

Contact: joykay1944@gmail.com

07931307598 or

cooperjac@hotmail.co.uk 01494488468

Facebook: NHS Retirement Fellowship Wycombe and Amersham Branch



NHS Retirement Fellowship

Making your retirement work for you.

Reg Charity No: 287936

In addition to the service, there are also two 'Navigating Life After The Storm' courses taking place this year for bereaved soulmates/life partners. Again, people can self-refer providing their GP is in the catchment area and that the person who died, died of a prolonged advanced life limiting illness.

The first Navigating Life After The Storm course runs from 10.30-12.30 for six Mondays from Monday June 2 in the hospice's Education Room. The second set of seminars is from 10.30-12.30 for six Mondays from Monday October 6, also in the Education Room at the hospice in Kingswood Park, High Wycombe.

To find out more, about the hospice's Bereavement Listening Service, please contact listening@sbhospice.org.uk



Join the charities annual walks for a day out in the Chiltern Hills. The 3 Peaks Challenge offers a variety of walks from 7 to 18.5 miles. Last year 1,043 walkers helped raised £88,065 for the charity. By taking part, you'll help Rennie Grove Peace Hospice Care to continue offering vital services.

There will be three routes of 7, 10.5 or 18.5 miles so something for everyone including families. The event starts at Princes Risborough School and there will be return transport back to the start after you have completed your walk.

To find out more about the walk, other fundraising events and the Earth, Wind & Fire challenge (Walk, Sky Dive & Walking on hot embers) visit:

renniedgrovepeace.org

The 163rd Hazlemere Fete
25th August 2025 Bank Holiday Monday
Sir William Ramsay School Field
Rose Avenue, Hazlemere, HP15 7UB
12 noon - 5pm
Admission and Parking Free

Activities:
 Dog Agility Display
 Fun Dog Show
 Meet The Alpacas
 Pony Walks
 Birds of Prey
 Kevin Taylor & Friends
 "After The Rain" Band
 Classic Cars
 Bars & Many Food Choices
 Tea, Coffee & Ice Cream
 Inflatables
 Fairground Rides
 Beat The Keeper
 Craft Fair
 Stormtroopers
 Numerous Side Shows

All enquiries, stall bookings and advertising to
 Tel: 01494 813000 Email: penn.consult@btinternet.com

Calibre audio

Volunteers needed in Aylesbury

Our team needs your help:

- Loading audiobooks onto USB sticks
- Processing returned audiobooks
- Chatting and eating biscuits

SCAN ME

01296 432339
calibreaudio.org.uk

Terriers W.I.

March - Was our first AGM after changing from an evening WI, to holding our meetings at 10.30am, in our new location at Cedar Barn. It was agreed the this had been a great success. We are still able to have interesting and varied speakers. Our new committee and president were elected as we look forward to the coming year. Then Betty Furner spoke to us on her time as an advisor for the Buckinghamshire Federation WI,

Our Quiz team got off to a good start coming 1st in the first round of the WI Inter-County Quiz. And will now go through to the Final on the 19th of June.



April - Unfortunately our speaker was unable to come to our meeting, but we had time to contact our members to organise a show & tell morning this is always very interesting as members bring along items and tell us the background and how they relate to them. Items included a small mahogany cabinet made by a member's grandfather when he was 19, a handmade quilt made by a member when she was 10 for the coronation in 1953 and has made a lap quilt for the Kings coronation this year. Another member gave us an insight to her family history, and brought in a sampler her grandmother had made in 1896 when she was 10 years old.

May - WI resolutions, this year the resolution is the importance of training in CPR and having access and training on how to use a defibrillator. It was agreed that we supported this action and would vote in favour of it at the AGM.

Cont. P.10

As our meeting fell on May 8, we stood for the 2 minutes silence at 12.00 clock to mark the 80th Anniversary of VE Day. We had decorated our hall with Union flags, and members brought along photos, and told us about their memories of VE Day and the war years.

Future Meetings

5th June—Safari by David Dennis

3rd July—Garden Party (location TBA)

August—No Meeting

4th September—Kilimanjaro

2nd October—Wildlife Photography

6th November—Electroscope to the Swan Theatre

4th December—Christmas Party

Meetings start at 10.30 am Doors open at 10.15am, Cedar Barn, Barn Lane, Hazelmere, HP15 7BQ on the first Thursday of every month August, plenty of on-site parking.

More information on <http://www.terrierswi.org.uk>



Professional High Standard
Established in 1999

- Interior & Exterior Decorating
- Paper Hanging
- Coving
- Carpentry & Kitchen Installations
- Laminate Flooring
- Door Hanging
- General Property Maintenance & Improvements

Free Estimates
Competitive Rates

Mobile: 07747 783015
Email: djcolespropmain@yahoo.com



Wycombe Sound is your local community radio station broadcasting on 106.6FM and also via the internet and Radio Player.

The station offers a mix of music along with specialists shows and local news and interviews.

Listen in 24 hours a day, 7 days a week.

Web: wycso.org.uk
E-mail: studio@wycombesound.org.uk
Tel: 01494 449900



Rainbows, Brownies, and Guides looking forward to Summer!

Rainbows, Brownies and Guides in High Wycombe have been busy this Spring and are now looking forward to the summer.

Some of the girls took part in the annual Scout and Guide Gang Show in April and joined with Scouts, Cubs, Guides and Brownies from all around the area to perform an amazing variety show. Many of the units have also learned about and celebrated VE day with parties and activities. All the girls and leaders are now looking forward to getting out and about in the summer. Some are having nights away with the unit and others are having trips and fun near their unit.

One unit in High Wycombe were lucky enough to be able to spot 6 fluffy cygnets while they were exploring on the Rye. All the girls were very excited and even managed to be quiet, so they did not frighten them!



There are 4 different age groups of girls in Girlguiding : Rainbows aged

4-7, Brownies aged 7-10 , Guides aged 10-14 and Rangers aged 14-18

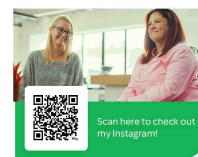
We always love to welcome new members so if you are interested in your daughter joining one of the units, please register your interest using the link.. You will be able to see the units in the area and find out where they meet. Once you have registered your daughter, one of the local leaders will then contact you with more information.

<https://www.girlguiding.org.uk/information-for-parents/register-a-child/>

if you would like to find out more information about helping or becoming a leader, please follow the link below.

<https://www.girlguiding.org.uk/get-involved/become-a-volunteer/>

You will be able to register your interest and then one of our local volunteers will contact you.



Advisor name: Kasia Keown
Telephone: 07907570687
Email: Thermomix.K.Keown@outlook.com

Vorwerk.co.uk

thermomix

@Thermomixukandire



David Winterburn Marketing & Media

In-house newsletters,
Local promotional work
Flyers for the small business
RSL Radio service management
Training and Production

Tel: 01494 – 463107
dwinterburn.fm@tiscali.co.uk



INNER WHEEL CLUB OF HIGH WYCOMBE

Major events in the Club since the last Edition

DISTRICT PRE RALLY SUPPER

Held on Wednesday, 7th May. Jennie kindly offered to host this event at her home. 23 attended this wonderful event and we all enjoyed a welcome drink and Cottage Pie and Peas followed by a selection of delicious desserts. It would not be an Inner Wheel event without a quiz or game to finish with! Delighted to take part in the left / right game. It is more difficult than you think.

Many thanks to Jennie for all the hard work that she put into this event.



DISTRICT RALLY – THURSDAY 8TH MAY

Held at Gerrards Cross Golf Club preceded by a Church Service.



CHARTER LUNCH

Our Charter Lunch was held at the High Wycombe Cricket Club on 12th May. Candles of Friendship were lit and a wonderful cake was shared by all. The raffle took on a different slant this time – a raffle with a theme ----- gardening/ flowers ---- £115 was raised for our charities. We have many events coming up.

Please contact Sue Creed on 07719719636 to discuss attending one of our meetings.



 **Need free help with reading?**
tel: 01494 926171

www.readeasy.org.uk/groups/chilterns/
Read Easy Chilterns - Registered Charity No. 1201262



Hire Cedar Barn or The Stables Hazlemere

Converted Barn and The Stables



Each room holds 60 people

Suitable for meetings, parties and fitness groups etc

Cost: £19 per hour Cedar Barn

Cost: £15 per hour The Stables

Please call Rachel on 01494 715548 or 07594 649548

email bookings@hazlemereparishcouncil.gov.uk

or visit www.hazlemereparishcouncil.gov.uk

CHAMELEON SINGLES GROUP



Early spring has seen Chameleon members enjoy a number of social events as well as some better than expected weather. We enjoyed an Indian take-away meal at a member's home and also made a visit to the Rebellion Brewery in Marlow Bottom. Our now regular annual Pancake Evening saw a good turnout with two members acting as chefs for the evening. Tasty pancakes and toppings enjoyed by all!

We did a spring walk in April and the fine weather certainly helped ensure a good turnout of members. The group did a walk around Penn Wood finishing up at the Squirrel Pub in Penn Street for drinks and a light Saturday lunch. Cricket had just started on the green so an added attraction for the day.

Along with our popular regular events including the Lunch Club on the second Friday of the month and the Pub Night on the last Thursday we continue to do much more driven by our members and their ideas. We plan to attend the Hazlemere Community Centre Quiz again in June coming one from bottom on our last attempt!

For those who want to join us from home we have a Zoom social where we catch up for 40 minutes once a month. This is particularly useful for those who cannot easily get out and is also a place to swop ideas for future events and plan any travel.

If you are single, 40-60's, looking for new friends and a great social life why not give Chameleon Singles Group a try? There are no strangers at Chameleon, just new friends to be made. The group has several local people from Totteridge, Terriers and the surrounding areas and you would be very welcome too.

To find out more call Terrie on 01494 445816, Trevor on 07879 332975 or e-mail: info@chameleonsingles.org.uk. Visit the group on-line at www.chameleonsingles.org.uk or search for us on Facebook and Nextdoor.

Find us on 

DO YOU NEED TO REMORTGAGE IN THE NEXT 6 MONTHS ?

Call today on 01494 211194.




**Applicant
Mortgage
Brokers**

YOUR HOME MAY BE REPOSSESSED IF YOU DO NOT
KEEP UP TO DATE WITH REPAYMENTS ON A MORTGAGE
OR OTHER DEBT SECURED ON IT.

Committee Members needed at Wycombe District Neighbourhood Watch

As you probably already know, we are the local association of the national Neighbourhood Watch movement. Our association operates centred on High Wycombe, but encompassing Marlow, Stokenchurch, Naphill, and Wooburn Green.



Our role is to encourage local people to work together to create safe, attractive, friendly places to live, places where crime is less likely to happen and people are less likely to turn to antisocial behaviour.

We have some 650 Co-ordinators representing over 10,000 members, which exceed any other areas within the territory of Thames Valley Police.

To run this operation, we have a committee of seven active members, but we are looking for some younger members or recently retired people to expand and enhance the Neighbourhood Watch coverage. They are needed to help us replace two recent retirees from our committee.

The role would include:

- Expand and enhance the coverage of Neighbourhood Watch.
- Manning our stands at appropriate local events.
- Supporting our speakers at seminars.
- Assisting the police on local issues.
- Contributing to our publicity.

We are looking for people who wish to help their neighbours, particularly vulnerable ones, reduce the incidence of crime in their areas.

Interested parties should contact us via : office@wdnhwatch.plus.com



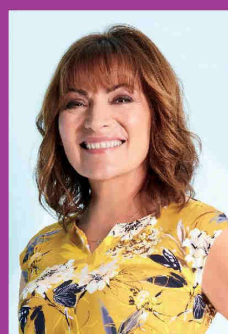
Latest news from Scannappeal, proud to support Bucks NHS hospitals.

Mobile Breast Screening Appeal reaches £100,000 milestone

We are thrilled to announce that the Mobile Breast Screening Appeal has now raised £100,000 since its launch just seven months ago in October 2024, in partnership with Buckinghamshire Healthcare NHS Trust Charitable Funds. This remarkable achievement brings us significantly closer to our goal of providing a new, fully equipped, state-of-the-art mobile mammography screening unit for South Buckinghamshire. We extend our sincere thanks to everyone who has contributed to this important life-saving appeal. Together, we will make a real difference in early detection and improved outcomes for local breast cancer patients.



To find out further information about our £410,000 Mobile Breast Screening Appeal and how you can support us please visit:- www.scannappeal.org.uk



“I’m absolutely thrilled to see how quickly our community has rallied behind this important fundraising appeal, helping us reach our first £100,000! I encourage everyone to think about what support they can offer – why not visit one of Scannappeal’s beautiful open gardens this summer, organise your own fun fundraising event, or simply donate whatever feels right for you. Remember, your support, no matter how big or small, will help ensure early breast cancer detection for those living here in Bucks. Thank you from the bottom of my heart!”

Lorraine Kelly, Appeal Ambassador

A record breaking year!

We are absolutely thrilled to share that our hospital bookshops in Amersham, Stoke Mandeville, and Wycombe raised an astonishing £48,820 in 2024 – our highest annual total ever! This incredible achievement wouldn’t have been possible without the unwavering support of our wonderful customers, generous donors, and dedicated volunteers.



Books needed

If you have any good quality adult fiction or children’s paperback books that you no longer need, please consider donating them to our bookshops in High Wycombe, Amersham, and Stoke Mandeville Hospital. Donations can be dropped off at any of these locations, or at our office at Amersham Hospital

Scannappeal is a local charity that raises funds to purchase life saving revolutionary medical equipment for Amersham, Stoke Mandeville, Wycombe NHS Hospitals, serving people living in Bucks and the surrounding areas.

T - 01494 734161 W - scannappeal.org.uk

Registered Charity
No. 296291



Tony Green Reflects on 25 years as a councillor

May the 1st was unusually hot this year with temperatures reaching 25 degrees. It was also election day in the Buckinghamshire Council elections. When the votes were counted the following day, I had lost the seat that I had held for the past 25 years. It was not a good day for the Conservative Party who lost overall control of Buckinghamshire Council.

I moved to High Wycombe with my family in 1997 from West Norwood in South London where I had been a councillor on the London Borough of Lambeth for 15 years. It was an interesting time in London politics with Lambeth having various changes in political control over those years. It was also being heavily invested in by the Government with millions of pounds being channelled into the regeneration of Brixton via the Brixton Challenge company. I was appointed a director of this company to represent the conservative group on the Council.

I was first elected for Wycombe District Council in 1999 and my experience of town centre regeneration came in useful as during my time on the council I was involved with a number of regeneration schemes: negotiating with developers to deliver the Eden shopping centre; the development of Handy Cross to deliver the new leisure centre and the development of the Hughenden Quarter with the building of Hughenden Garden Village.

I was also involved in the improvements of the town centre, first as a member of the Town Centre Partnership and then with the formation and running of the High Wycombe BIDCo. I was involved in the civic side of life in High Wycombe and was elected Mayor of the town for the year 2003-4. I was honoured to represent the town and to meet many of the voluntary groups who give their time to make the town better.

When the Council decided to set up a charitable trust to run Wycombe Museum, I was appointed as a trustee and have been involved in managing the museum building in Priory Avenue and its extensive collection of chairs and other artifacts relating to the Wycombe area.

In 2018 I was elected Chairman of the Council and it was another memorable opportunity to meet residents of the District as well as welcoming visiting members of the Royal family on behalf of the Council.

After 25 years of helping the residents of Terriers and Amersham Hill and playing my part of the management of both Wycombe and Buckinghamshire Councils, I will still be continuing to help local people by continuing my volunteering roles with the Royal British Legion and as a governor at a local school.



St Francis Church, Terriers



What a joy to receive such a warm welcome! Thank you so much for the beautiful card and flowers - We loved reading your thoughtful messages and already feel so encouraged.

I'm incredibly excited to begin this new chapter with you all. I can't wait to meet each of you and discover the amazing gifts God has placed in this community. I believe church should be like a fruit salad - full of colour, flavour and variety - where everyone brings something unique and wonderful to the table. Let's grow together, celebrate one another, and share God's love with joy and creativity.

Please do get in touch - I'd love to hear from you!

E-mail: azita@terrierschurch.org.uk Mobile: 07359 916939

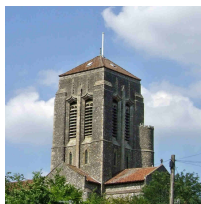


Wycombe Community Advice Hub

A one-stop drop in advice shop will be held on the last Wednesday of every month between 9:30am and 12pm and offers advice from a number of organisations. It will be located at the Beacon (formerly Lata Lata) in the underpass in between Bucks New University and the town centre.

Organisations supporting this include Citizens Advice Bucks, Buckinghamshire Council, Buckinghamshire Family Information Service, One Can Trust, Women's Aid, The Oasis Partnership and HSBC.

Local Faith Group information for Totteridge & Terriers



St Francis Church

Located on Amersham Road in Terriers. www.terrierschurch.org.uk

Our services are held every Sunday at 8am and 10am and on Wednesday at 10:30am

Office email: churchoffice@terrierschurch.org.uk

Tel: 01494 297933 Office Tel: 01494 462911

Facebook: Friends of St Francis Terriers

Totteridge Baptist Church

Totteridge Baptist Church Located on Hillary Road, High Wycombe, HP13 7RA

Our services are held every Sunday at 10.30am - All are very welcome.

Tel: 07760 651953 E-mail: totteridgebc.secretary@gmail.com

Website: <https://www.totteridgebaptist.org.uk> Instagram: totteridgebaptist

Facebook: <https://www.facebook.com/totteridgebaptist.church>

St Andrews Church (C of E)

Located on Hatters Lane, High Wycombe HP13 7NJ.

Services are every Sunday at 10:15am.

Tel: 01494 - 529668

St Wulstans Catholic Church

Located on Hollis Road, Totteridge, HP13 7UN

Regular Masses both on Sundays and at other times during the week.

Tel: 01494 - 472576

St Augustine's Church (Catholic)

Located on Amersham Hill, High Wycombe

There are regular Masses on Saturdays, Sundays and during the week.

Tel: 01494 - 523969

Totteridge Mosque

(Wycombe Islamic & Mosque Trust Limited)

24 Totteridge Road, High Wycombe, HP13 6EB Tel: 01494 - 513440

Also Muslim Education Centre at 4 The Parade, Totteridge Drive

Tel: 01494 - 522786

Wise (Wycombe Islamic Society)

St Marks Close, High Wycombe, HP13 6GN

Tel: 01494 - 259194

Web: www.wise-web.org

LIGHTBULB CAFE

The Lightbulb Café is a warm and welcoming space, designed to support individuals experiencing memory changes or living with a dementia diagnosis and their carers.

Hosted by Wycombe Wanderers Foundation, this programme offers a safe and comfortable space where you can:

- Connect with Others - Engage in Reminiscence Activities -**
- Promote Well-being - Separate Carer Support**

Join us in a friendly environment where everyone is welcomed, valued, and supported.

Every 1st Wednesday of the month
10:30-12pm

Held at Adams Park Stadium, Hillbottom Road, High Wycombe, HP12 4HJ

To book and to question please call or email the office on details below

01494 455736

COMMUNITY@WWFC.COM

WYCOMBEWANDERERSFOUNDATION.CO.UK



At the moment it feels like Summer and we have been watering like mad to keep things going, but the weather forecasts are telling us the rain is on the way.

We have been growing many of our plants from seed this year, so have a greenhouse full with more waiting now for planting. Some may be available at our Spring Fayre on the 31st May so try to pop in and have a look around the garden which is becoming more colourful each day.

Our fig tree is full of new figs and we are experimenting with a suggestion of putting them all in small bags to stop the drop later, and the Pear and Apple trees have lots of little fruits from the blossom in the Spring. We have 3 new beds and beans growing already, other plants cauliflowers, sweetcorn, squash's, cucumbers, are just planted and Tomatoes are waiting for their spot.

Also we have our Nature Trail on the left hand side of the Church and a few woodland plants and bulbs to be planted for next year. If you look on our Facebook sight - Terriers Community Garden you will see the films that Jane has taken of the Foxes and Badgers overnight in the garden.

Our latest project, courtesy of our newest member Amelia is are two small ponds. Her wonderful gifts which has enabled us to line the ponds and put plants in them.

We still need more volunteers and we are grateful for any help they can give. If you are waiting for an allotment or just miss having a garden, we are here at the back of St Francis Church, Amersham Road, HP13 5AB

We are Valerie, Jane, Pauline and Amelia. You can phone me on 07733794021 or 01494 473128 and leave a message and I will reply to you or email valerie.stringer@icloud.com. I hope to see you soon.

Local Halls

Totteridge Community Centre, 55 Totteridge Drive, HP13 6UG
Tel: 01494 511216

St Francis Church Hall, Amersham Road, HP13 5AB Tel: 01494 462911

Totteridge Baptist Church, Hilary Road, HP13 7RA Tel: 01494 263359

St Wulstans Church Hall, Hollis Road, HP13 7UN Tel: 01494 438300

The Hive, Arnison Avenue, HP13 6DD Tel: 01494 454697

Memory Partners Charity

Tai Chi Café
Thursday's 10:50am
Totteridge Community
Centre

The last edition of T&T News gave details of our tai chi cafés in Totteridge and Beaconsfield. In our aim to spread the benefits of tai chi for health and wellbeing more widely we are proud to announce that last month we were able to run a training workshop to produce new instructors. The cost of doing so was covered by donations from the café with support from the community centre.



For more information contact
Sue 01494 532088
susanstuart922@gmail.com



www.buckinghamshirelottery.co.uk & search for T&T News
£1 Per ticket. Players must be 18 or over. Always gamble responsibly.

Emma Reynolds MP

Earlier this month, I was honoured to attend VE80 Day celebrations across Wycombe and to pay tribute to the brave men and women who fought for the freedom and democracy we value so deeply. I thought of my grandad, Ken Reynolds, a World War II veteran, with pride.

It was a pleasure to speak with residents ahead of the local elections. I look forward to working with councillors from all parties to make Wycombe an even better place to live and work.

We've always been clear: change doesn't happen overnight, and we are just as impatient and hungry for that change as the rest of the country.

The government has made significant strides in improving public services and supporting pensioners. Thanks to the government's commitment to the triple lock, the state pension will increase by up to £1,900 for millions of pensioners by 2030. NHS services have seen notable improvements, with 3 million more appointments delivered and over 1,500 new GPs recruited. As a result, more than 100,000 additional people are being treated on time, and waiting lists have fallen for the sixth month in a row. During recent visits to GP surgeries, Wye Valley and Riverside, I heard firsthand about both the challenges and the improvements being made locally.

Community safety remains a top priority, and I welcome the Prime Minister's recent commitment to deploy the first 3,000 new neighbourhood police officers by early next year.

As part of our mission for growth, the government has pledged to build 1.5 million homes in 5 years. I was pleased to attend the groundbreaking of Paradigm Housing Association's new development, where we will see shared ownership properties supported by comprehensive infrastructure. Projects like this are key to helping young people and families onto the housing ladder.

It was fantastic to meet local business owners alongside Laura Kyrke-Smith MP and Sarah Green MP to discuss steps the government is taking to support small businesses. Encouragingly, the UK recorded the fastest growth in the G7 in the first quarter of this year, but the government knows there is more to do to make sure everyone feels the benefit.

Chiltern Stroke Club

Had a stroke? or a family member had a stroke?

**Come along and join us Tuesdays 2pm-4pm
in Brooks Lounge, Amersham Road, Hazlemere**

We are a local network of The Stroke Association; support and social group for stroke survivors and their families. Weekly exercise led by a qualified rehabilitation teacher, specialist speakers and social activities.

Contact: Adele 01494 728537

E-Mail: grassadele@gmail.com

www.chilternstrokeclub.co.uk

Online & Telephone Counselling

**Short and long term to
improve your mental and
emotional well-being.**

**Would you like to speak to
a qualified counsellor who
will listen and support you
on your journey?**

**Call Amanda on 07913 872701
or**

Email: amandapassmorecounselling@gmail.com



One Can Trust—What to do if you need help

One Can Trust food bank works on a referral system from partners such as the Helping Hand team at Buckinghamshire Council, Wycombe Women's Aid and Citizens Advice Bureau.
Tel: 01494 512 277

E-mail: office@onecantrust.org.uk

WADSAD Wycombe and District Sports Association

Wadsad is based at the Wycombe Leisure Centre. We offer people of all types of disability a chance to take part in sport. For more information on becoming a member or Helping contact - Sarah Wiltshire 01494 450169 or Rachel Pope 01753 889390.

News in Brief (N.I.B)

Community Impact Bucks

Community Impact Bucks has appointed Kate Walker as its new Chief Executive Officer, Kate took up the role on 6th May 2025, bringing with her more than 20 years experience in local government in Buckinghamshire.

Over the last five years, Kate has worked closely with charities, voluntary and community organisations, and both statutory and non-statutory partners to drive forward community focused projects and partnerships.

You can find out more about the work of CIB at: communityimpactbucks.org.uk

Child Bereavement UK to merge with Winston's Wish

Locally based charity Child Bereavement UK has announced that it is merging with Winston's Wish a charity with similar aims. During the period of transition to the new combined charity both organisations will continue to deliver their respective services to beneficiaries and stakeholders.

If you are currently receiving support, fundraising, volunteering or partnering with either charity in any way, this will remain unaffected.

Local Council Elections

The local council elections at the beginning of May saw sweeping changes to the political map across the country. Here in Buckinghamshire we saw a number of new councillors elected and many lose their seats. The rise of Reform and the independent candidates brought changes across the county. The Conservative Party lost control of Buckinghamshire Council to No Overall Control by one seat.

Our newly elected councillors for our two wards are:

Totteridge & Bowerdean

Imran Hussain - Wycombe Independent

Julia Denise Wassell—Wycombe Independent

Terriers & Amersham Hill

Chris Chilton - Labour

Sarfaz Khan Raja - Conservative



TOTTERIDGE FC has provided football to the local youth in the community since 1996. For more information and contact details please visit our web site – www.totteridgefc.co.uk

YOUR LOCAL COMMUNITY FOOTBALL TEAM!

And update from the Chairman, Oliver Witney

ANOTHER SEASON GONE. It's been a wonderful season with so many good games of football.

We had already started planning things for next season but we hadn't even finished this one yet. As the games slowly started ending we have started attending local tournaments. We have had a successful time at Chinnor where the U12s teams reached the final in their group to play against each other.



NEXT SEASON

Next year we would like to continue expanding the club, as we will be losing the U18s to adult football, so we would love some volunteers to come and join us to help develop the next group of Totteridge players! We will be starting an U9s, U10s and U12s team to continue offering local football. If any players (as of 2024/25) are in Years 3, 4, 5 or 6 and interested in playing club football then please get in touch.

We are also really keen for any volunteers or local sponsorship. If you are interested in anything that may help our club provide fun, club football in the local area then please get in touch.

If you are interested in joining, either as a player or volunteer, please contact myself, Oliver Witney on 07706888441.

SMC Under 5s/6s/7s/8s – Olly	07706 888441
Under 10-11s – Olly	07706 888441
Under 12s – Dean	07961 666394 (SQUAD FULL)
Under 13s – Rohan	07576 135321 (SQUAD FULL)
Under 14s – Will	07707 61753
Under 15s – Jon	07723 314419 (SQUAD FULL)
Under 18s – Tak	07838 579217 (SQUAD FULL)



Join your local Cycling UK groups this summer

Cycling UK has a number of local groups in South Buckinghamshire.

South Bucks Midweek group offers a selection of rides every Wednesday from easy paced to moderate to rides that are faster and longer. Most rides meet at 09:30am and include a stop for elevenses at a local café or garden centre followed by lunch before returning home. There are also coffee Pots on Friday's. Make your own way there, meet from 10:30am and enjoy the company and cycling.

Chiltern Cycling offers both led rides and coffee pots every Sunday. There are a variety of different length rides along with coffee stops all taking place on quiet routes in the countryside. Summer means we can enjoy rides with coffee stops offering both inside and outside space with most rides returning to the start point. Chiltern Cycling have a Zoom social on the 1st Thursday of each month at 8pm and a meet up clubroom at Little Kingshill Baptist Church Hall on the 3rd Thursday except June—Summer BBQ on 26th. There are no clubrooms July or August but Zoom socials continue all year.

There is something for everyone of all ages with both pedal bikes and e-bikers welcome.

Why not come and join while the sun shines (Well usually!) you would be very welcome!

For more Information:

E-mail: publicity@southbuckscycling.org.uk

Web: www.southbucksmidweekcycling.org (Midweek Group)

Web: www.southbuckscycling.org.uk (Chiltern Group)

For general information about Cycling UK visit: www.cyclinguk.org

Totteridge and Terriers News

68 Windsor Drive
High Wycombe HP13 6BL

Telephone: 01494 463107

Text / Mobile: 07905 888098

E-mail: editor@tandnews.org.uk

Web: www.tandnews.org.uk

Readership Approx 3,750 per issue



Find us on 

T & T News is published four times a year in March, June, September and December. We aim to get the magazine available at the end of the month prior to issue. In order that we can achieve this deadline we need your articles and advertising as early as possible. Our deadline for the autumn 2025 edition is 20th August.

We thank all our advertisers and contributors for their support. However T & T News cannot endorse any product or service contained within this magazine. You are advised to check details of all goods and services offered. All contributions are accepted in good faith and opinions expressed are not necessarily that of the editor or T & T News.

That's about it...Join us again in September 2025. In the meantime you can catch up with the latest news and events on the web at:

www.tandnews.org.uk

Index to Advertisers

Applicant Mortgage Brokers	p.16	Crystal Property Maintenance	p.4
Amanda Passmore Counselling	p.26	David Winterburn M&M	p.12
Arrow Taxis	p.32	DJ Coles Property Services	p.10
Arnold Funeral Service	p.3	Kitchen Appliances	p.12
Atlas	p.4	Read Easy	p.14
Cedar Barn & Stables	p.14	The Wye Partnership	p.2
Come Dance With Me	p.12		

2025 Advertising Rates (Introductory - Digital Edition):

Mini Ad £6 / £12 Quarter Page / £20 Half Page / Full Page £35 (Full colour)

Discounted rates are available for annual pre-paid (4 issues)

(Autumn 2025 deadline is 20th August)

T & T News Events Diary

Wednesday 4th June / 2nd July / 6th August

Lightbulb Café at Adams Park Stadium, High Wycombe 10:30am - Noon

A warm and welcoming space for people experiencing memory changes

Wednesday 11th June

Meeting of the NHS Retirement Fellowship at Holmer Green Village Centre

AGM plus tea and Beetle Driver (See p.6 for group information)

Saturday 28th June

Hazlemere Repair Café, Community Centre, Rose Ave Hazlemere 10am-1pm

Volunteers will repair your stuff. Donations welcome.

Wednesday 20th August

T & T News deadline for the autumn 2025 edition

E-mail: editor@tandtnews.org.uk with your news, events and other contributions.

Monday 25th August

Hazlemere Fete, Community Centre, Rose Avenue, Hazlemere

Annual Fete now in its 163rd year. Lots of stalls, food and events take place across the afternoon. Gates open at 12 noon. Free admission & parking.

Sunday 14th September

Rennie Grove Peace Hospice 3 Peaks Challenge

Annual fundraising walking event with routes from 7 to 18.5 miles

Visit: www.renniegrovepeace.org for more information and to book in.

Regular Events

Every 1st Monday of the month

Inner Wheel Club, Cricket Club, London Road, High Wycombe

Contact Sue Creed on 07719 719636 (See P.13 for more information)

Every 2nd Wednesday of the month

Wycombe Wenches W.I. Meeting 7:30pm Cricket Club, London Rd, Wyc.

Monthly meeting of the W.I. See page 7 for more information and contact details.

Every 1st Thursday of the month

Terriers W.I. meeting 10:30am, Cedar Barn, Barn Lane, Hazlemere

Monthly meeting of the W.I. New members welcome. See page 9 for more info.

ARROW TAXIS

WHEELCHAIR ACCESS VEHICLES
MINI BUSES
CORPORATE ACCOUNTS
LOCAL & LONG DISTANCE
ALL MAJOR AIRPORTS
CONTACT NUMBER
01494 474764

✉ [INFO@ARROWTAXIS.NET](mailto:info@arrowtaxis.net)
 f SEARCH FOR US ON FACEBOOK