

T & T NEWS



An early festive display on Arnison Avenue Photo © DW 2023

A great house & garden display. One of the best this Christmas?

Send us your Christmas creations to include on our web site:

tandtnews.org.uk Merry Christmas & Happy New Year!

See inside for all your community news from Totteridge & Terriers.

The **wye** Partnership



It's our business so we care.

The Wye Partnership gained their knowledge and developed their expertise within the most successful estate agents in High Wycombe. On witnessing the take over of these long established companies by nationwide chains we recognised the need for the retention of a local and independent service. Our recent merger makes the enlarged Partnership the strongest Independent in South Bucks and The Chilterns!

All the partners have invested their own money into the Wye Residential Partnership and all truly believe that our business will be built on delivering excellent service to our clients. This means you can be confident that we will deliver on all aspects of Estate Agency in an honest, open and transparent way.

If you are looking to buy, sell or let in High Wycombe or the surrounding Chiltern villages then contact an estate agency that is motivated by your success and talk to The Wye Partnership.

wyeres.co.uk

Hazlemere
01494 711 284
hazlemere@wyeres.co.uk

High Wycombe
01494 451 300
wycombe@wyeres.co.uk

Prestwood
01494 868 000
prestwood@wyecountry.co.uk

Great Missenden
01494 868 000
missenden@wyecountry.co.uk

Naphill
01494 565 555
naphill@wyecountry.co.uk

Stokenchurch
01494 509 377
stokenchurch@wyeres.co.uk

Lettings High Wycombe
01494 358 358
lettings@wyeres.co.uk

Lettings Great Missenden
01494 864 225
lettings@wyecountry.co.uk

Associated
Park Lane Office
0203 368 8472



WELCOME TO T&T NEWS WINTER 2023

INSIDE THIS ISSUE:

<i>South Bucks Hospice</i>	5
<i>W.I. News</i>	7 & 9
<i>Girlguiding</i>	11
<i>Neighbourhood Watch News</i>	13
<i>Chameleon Singles Group</i>	15
<i>Faith Group News</i>	17
<i>Inner Wheel Club</i>	18
<i>Steve Baker MP</i>	19
<i>Memory Partners & Child Bereavement</i>	21
<i>Totteridge Football Club</i>	24 & 25
<i>Events Diary</i>	27

Hello,

Welcome to the Winter 2023 edition of T & T News.

For many organisations, charities and groups this is probably the busiest time of year in the run up to Christmas. It is also of course also a busy time for many of us getting ready for the festivities ahead with all the organising, shopping and preparing that brings.

If you have or are going to be involved in a community event over the next couple of months then do let us know how it went. We can include your contributions both in the printed magazine and online.

In this edition of the community magazine we have all our regular contributions. We are still looking to include more and increase the number of pages when funding permits. In the meantime make sure you keep up to date with all that's happening locally by visiting our web site at:

www.tandtnews.org.uk

Have a great Festive Season and Happy New Year! Hope you enjoy reading this edition of the community magazine.

David Winterburn, Editor

High Wycombe 891 London Road Tel: 01494 472572	Beaconsfield 32 Gregories Road Tel: 01494 685000
Head Office Flackwell Heath 24 White Pitt Lane Tel: 01494 952288	Marlow 21-23 Little Marlow Road Tel: 01628 898866
Gerrards Cross 38 Oak End Way Tel: 01753 891892	Farnham Common 4 The Broadway Tel: 01753 535556



ARNOLD FUNERAL SERVICE

INDEPENDENT FAMILY FUNERAL DIRECTORS

6 Generations of Service in the Community

Local Direct Cremation Available

Traditional, Alternative & Green Funerals - Pre-Payment Plans - Stonemasonry - Floristry

24 Hour Service

www.arnold-funerals.co.uk

New Players & Beginners Always Welcome!



Mens Walking Football
Tuesdays
6.15pm - 7.15pm



Ladies Football
Thursdays
6.30pm - 7.30pm



Scan above for more information!

Markland Gardening Services

For all your general garden maintenance including
grass cutting / edging
hedge cutting
weeding / planting / mulching

PLUS
with 15 years experience growing organic fruit and vegetables, practical help and advice in creating and maintaining a vegetable or kitchen garden.
Tel: 01494-881119
Mob: 07847-111079
E:markland.gardening@googlemail.com

AZTEC CHIMNEY SWEEP



Brush & Vac
Fast Friendly Service
Clean & Tidy
Johnny The Sweep
All Areas Covered
Tel: 01494 532748

Property Maintenance Services

For a reliable and quality based service

- ❖ Carpentry
- ❖ Roofing Repairs
- ❖ Internal Doors Supplied and Fitted
- ❖ UPVC Facias & Soffits
- ❖ UPVC Windows & Doors
- ❖ Replacement Blown Glazing Units
- ❖ Garden Decking
- ❖ Internal/External Decorating
- ❖ Gutter Cleaning/Repair/Replace
- ❖ Shed Roof Felting & Shed Bases
- ❖ Fencing & Gates Supplied/Installed



Crystal Property Maintenance
email:ash.craven@gmail.com
Telephone: 07742 022987



South Bucks Hospice's Chief Executive Officer Jackie Ward tells here today how you can help to brighten up Christmas and New Year for patients with life-limiting illnesses.



Giving to South Bucks Hospice touches the lives of those in our local community living with a life-limiting illnesses. The hospice offers patient-centred care to individuals through the provision of specialist palliative, psychotherapeutic and lymphoedema care. We are also there to support their families and carers during the illness and in bereavement.

It is through kind donations that patients at South Bucks Hospice can continue to receive these valued services completely free of charge, helping them to live well and optimise their quality of life. The hospice couldn't exist without this support. By setting up a regular donation you can help us plan ahead and support our community today and in the future.

- £5 – could buy aromatherapy oils to provide relief from pain, anxiety, stress and to promote better sleep
- £10 – could help towards funding our support groups
- £20 – could provide bereavement support for someone who has lost a loved one

£50 – could pay for a consultation with a palliative care nurse or lymphoedema specialist

Find out more or donate here: <https://sbh.org.uk/donate>





ATLAS

www.atlas-direct.com

TV AERIALS • SATELLITE TV • CCTV • INTERNET

SPECIALISTS IN:

- **DIGITAL TV & RADIO AERIALS**
- **SKY, FREESAT, EUROPEAN SATELLITE SYSTEMS**
- **WIFI ACCESS POINTS / WIFI ENHANCEMENT**
- **CAT5 / CAT6 NETWORK POINTS**
- **TV WALL MOUNTING**
- **CCTV SYSTEMS / SMART PHONE & TABLET VIEWING**
- **RING VIDEO DOORBELL**
- **COMMERCIAL AND DOMESTIC**

SAME DAY SERVICE
CALL US NOW OR VISIT
US ONLINE

01494 444060



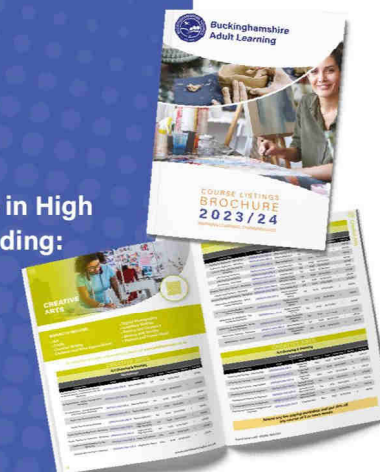


New Adult Learning courses available now

One-day workshops and short courses in High Wycombe and around the county, including:

- Health & Fitness
- Home Improvements & Gardening
- Languages
- English, Maths & Digital Skills
- Distance Learning
- Creative Arts such as Pottery & Stained Glass

Enrol now for January & Spring courses
01296 382403 | adultlearningbc.ac.uk
studentenquiries@buckinghamshire.gov.uk





Wycombe Wenchies WI



Wycombe Wenchies have continued to thrive, with several new ladies joining us in the last few months. All our additional groups are well-supported, with walks every month (always ending with coffee and cake!), the Book Club meeting in a local café, having read a variety of books, the Knit and Natter meeting at John Lewis café, again with cake and croissants on the menu, and the Supper Club meeting in different restaurants once a month. You can see how importantly food is rated, and how often it appears on the list!!

Our main meetings have of course also continued, and in September we were treated to a fascinating talk about the links between Penn in Buckinghamshire and Pennsylvania, a talk which we had to postpone from the spring because of snow. October saw our Annual General Meeting, followed by some table-top quizzes. In November we held our Christmas crafts evening, where everyone had a chance to make an origami Father Christmas, a paper poinsettia for the Christmas tree, a table floral decoration, and a Christmas troll decoration.



Craft Tables in November

The "Special Birthday"
Afternoon Tea

During October we also held a special afternoon tea to celebrate anyone with special birthdays this year, when two of our ladies received a flower posy in recognition of the event. Several members went on a murder mystery walk around Beaconsfield.

We have lots of event coming up, with a trip to Stratford Christmas Market, and a Christmas meal out, as well as special events planned for our Christmas meeting in December.

If you are interested in joining our friendly group, please contact us via the website address. We meet on the second Wednesday of each month, at the Cricket Club on London Road, High Wycombe, at 7.30pm.

Best wishes

Diane Haylor

wycombewenchieswi@hotmail.co.uk

Do you need a friendly and reliable motor mechanic? **ST AUTOS**

Someone you can trust to look after you and your car?

Contact: Steve Tutt
07867 946191

- S T Autos is owner managed
- Offers an efficient, friendly & personal service
- Competitive pricing - estimates available
- 40 years experience; City & Guilds qualified
- Full public liability insurance

"Your complete repair service for all vehicles"

- MOT's
- Service
- Repairs
- Diagnostics
- Air Conditioning
- Tyres & Exhausts

An MOT for just £45.00 with any service

***** Free local collection and return of your vehicle from the High Wycombe Area*****

GoodGarageScheme.com
Registered Member

RM
RURAL MOTOR INDUSTRY FEDERATION

TRUST
APPROVED CODE TRADING STANDARDS UK

VISA **MasterCard**

stvtutt@gmail.com
www.stautos.co.uk

Feet Treat

at The Castle Street Clinic
Julia Adam
(BAFHP)MCFHP DipFHT MAFHP

- Corns • Callouses • Verrucas • Athlete's Foot
- Fungal Nail Infections • Diabetic Patients
- Ingrown Toe Nails • Nail Care
- MediPed • Biomechanics
- and other footcare advice...

The Castle Street Clinic, 19 Castle Street
High Wycombe HP13 6RU

Tel: 07939 574789
www.feetreat.org.uk

Terriers Evening W.I.

Members returned to Cedar Park School, in early September, after our usual August break looking forward to meeting friends and to participating in our varied and engaging autumn program.

Our first meeting featured a fascinating talk by Jo Laurie about her mother who had trained as a nurse at Charing Cross Hospital in the late 1920s – early 1930s. After qualifying she applied to work overseas and was sent to China where her many experiences included setting up hospitals and mobile health clinics. She worked throughout the Japanese invasion of China, a period in history less familiar, being overshadowed by events in Europe. Later she went to work in South Africa where she met and married Jo's father.

Later in September Celia Carter hosted a well-supported coffee morning and bring and buy sale which raised around £80 for the Institute funds.

Our October meeting featured the ever-popular Geoff Rozelar who spoke about the late Princess Margaret. Although much of her story is known, Mr Rozelar revealed relatively unknown aspects of her behaviour which confirmed her reputation as one of the royal family's rebels at a time when such behaviour would have been considered beyond the pale.

Beautiful and charismatic, Margaret was also unashamedly rude, snobbish and a bad loser. Margaret mixed with the glitterati of the day but frequently fell out with many stars who snubbed her. Eventually, after her health failed, she became a recluse and, after her death was cremated in Slough.

Unfortunately, our November meeting coincided with arrival of Storm Ciaran and the meeting had to be cancelled. We look forward to December and our annual Christmas party

Visitors and new members are warmly invited to join us at 7.30pm at Cedar Park School, Hazlemere on the first Thursday of every month, except August. More information at: terrierseveningwi.org.uk
Or E-mail: terriers.evening@hotmail.co.uk

DO YOU NEED TO REMORTGAGE IN THE NEXT 6 MONTHS ?

Call today on 01494 211194.



**Applicant
Mortgage
Brokers**

**YOUR HOME MAY BE REPOSSESSED IF YOU DO NOT
KEEP UP TO DATE WITH REPAYMENTS ON A MORTGAGE
OR OTHER DEBT SECURED ON IT.**



Rainbows, Brownies, and Guides kick off the autumn term



Our Girlguiding groups in High Wycombe have started the new school year in style with lots of various activities across the age groups. It's been a busy term with sleepovers and badge work, outdoor activities and still to come, a district trip to cinema and of course the annual panto trip!

We currently have spaces in the 3 sections: Rainbows aged 5-7 years, Brownies 7-10 years and Guides 10-14 years.

We always love to welcome new members so if you're interested in your daughter joining one of the units, register your interest using the link.: [https:// www.girlguiding.org.uk/information-for-parents/register-your- daughter/](https://www.girlguiding.org.uk/information-for-parents/register-your-daughter/)

You will be able to see the units in the area and find out where they meet. Once you have registered your daughter, one of the local leaders will then contact you with more information.

Maybe you're an adult wondering how you could help your community and local area? We'd love to hear from you if you're interested in becoming a leader or helper? If you'd like to find out more information about becoming a leader or helper, please go to: <https://www.girlguiding.org.uk/get-involved/become-a-volunteer/>

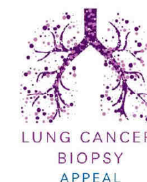
You'll be able to register your interest and then one of our local volunteers will reach out to have a chat with you. We're a friendly organisation looking to make a difference in the lives of girls and young women. Maybe you were a Rainbow, a Brownie or a Guide yourself, and can remember the fun you had. Why not think about how you get involved for the next generation.



Latest news from Scannappeal, proud to support Bucks NHS hospitals.

Launch of our new Lung Cancer Biopsy Appeal

Our new Lung Cancer Biopsy Appeal for £150,000 will ensure people with suspected lung cancer have a quicker, safer and more accurate diagnosis. The new appeal will introduce the innovative use of Peripheral Navigational Bronchoscopy to Stoke Mandeville hospital. Navigational bronchoscopy is performed using the latest, advanced technology which works like a GPS system. A three-dimensional roadmap of the lungs is created which allows clinicians to reach much deeper into the lungs. Currently suspected cancers are difficult to biopsy and patients may be referred to hospitals outside of Bucks for a biopsy, which could lead to a delay in diagnosis.



To find out further information about our current Lung Cancer Biopsy Appeal and how you can support us please visit:- www.scannappeal.org.uk

Snip and save festive stamps

As Christmas cards land on your doorstep, please snip off and save the stamp for Scannappeal. We recycle used postage stamps, all you need to do is cut out the stamp from the envelope leaving at least a 1cm gap around the stamp and start collecting. Once you're ready to offload your stamps you can either post or drop off stamps to our office in Amersham hospital.

Private film screening of The Great Escaper

The Great Escaper stars Sir Michael Caine and the late Glenda Jackson in a heart warming film based on the true story of British World War II veteran and war hero Bernard Jordan.

Taking place at the National Film and Television School (NFTS) in Beaconsfield on Sunday 21 January 2024, 2pm - 4.30pm.

Tickets are £20 each, includes tea coffee and cake. Available from scannappeal.org.uk or call us on 01494 734161.



Christmas gift wrapping service

Our popular gift wrapping service will return to the Eden Shopping Centre, High Wycombe to beautifully wrap your Christmas gifts. You shop and we will wrap, giving you one less thing to do this Christmas. Simply bring your gifts, big or small, to our stall and in exchange for a donation we will present you with a gift ready to pop straight under the tree.

Opening hours (located opposite Boots)

- Saturday 16 December: 10.00am – 5.00pm
- Sunday 17 December: 11.00am – 5.00pm
- Monday 18 December: Closed
- Tuesday 19 December: 11.00am – 4.00pm
- Wednesday 20 December: 10.00am – 5.00pm
- Thursday 21 December: 10.00am – 5.00pm
- Friday 22 December: 10.00am – 5.00pm
- Saturday 23 December: 10.00am – 5.00pm
- Sunday 24 December: 11.00am – 3.00pm



Scannappeal is a local charity that raises funds to purchase life saving revolutionary medical equipment for Amersham, Stoke Mandeville, Wycombe NHS hospitals, serving people living in Bucks and the surrounding areas.

T - 01494 734161 W - scannappeal.org.uk

Registered Charity
No. 296291





Wycombe District Neighbourhood Watch Association

Below is some of the latest news from your local Neighbourhood Watch Association. To read the full stories and latest information visit the T & T News web site at tandtnews.org.uk

Car Crime Prevention

With the onset of darker evenings it is estimated that out of every 100 vehicle one is left unlocked.

1. Always leave your car locked
2. Leave your car in a well lit area
3. Leave your car empty. If you do leave something in the car lock it in the boot.

How to report a crime to Thames Valley Police

Emergency - Dial 999 for a crime in progress or textphone 18000*

Non-Emergency—Dial 101 or use textphone 18001 101*

* You need to register to use this service

Reports can also be made on-line via the Thames Valley Police web site: thamesvalley.police.uk/ro/report/ocr/af/how-to-report-a-crime
You can also report anonymously through Crimestoppers on 0800 555 111.

Protect your festive online shopping from Scammers

The festive season is undoubtedly a time of joy and celebration but its also a time when scammers are out to cash in on unsuspecting victims. The tips below will help you avoid becoming a victim of this crime.

1. Look out for fake e-mails and offers through Social Media.
2. Check out the company you are buying from first.
3. Regularly update your devices with the latest software and apps.
4. Use addition account protection such as 2-factor authentication.
5. Remember fraud is never your fault. Report to the police.

At Vets4Pets High Wycombe

We are proud of our

- ✓ Convenient location and opening hours
- ✓ Highly trained vets and nurses
- ✓ Modern medical and surgical facilities
- ✓ Affordable healthcare plans, like our Vac4Life
- ✓ We work with you to keep you fully informed on what treatments your pet needs and why

Call **01494 443 075** or visit **vets4pets.com**

Vets4Pets High Wycombe

133 Amersham Road, High Wycombe, HP13 5AD

Opening times: 8.30am - 7pm Mon-Fri, 9am - 12pm Sat



Vets4Pets
Putting your pet first

Hire Cedar Barn or The Stables Hazlemere

Converted Barn and The Stables



Each room holds 60 people

Suitable for meetings, parties and fitness groups etc

Cost: £18 per hour Cedar Barn

Cost: £14 per hour The Stables

Please call Rachel on 01494 715548

or email bookings@hazlemereparishcouncil.org.uk

or visit www.hazlemereparishcouncil.org.uk

CHAMELEON SINGLES GROUP



Over the autumn we have held a variety of events including a Take-Away evening at home, Autumn Tints Walk and for those who prefer to stay at home or cannot get out monthly Zoom socials. With the cooler winter days ahead, the group will be doing more indoor events although we still have the occasional day trip out and our walks.

We have two great days out in the run up to Christmas that are outdoors and hopefully both will encounter good weather. Firstly, a day trip to one of England's smallest towns, Stockbridge then onto Salisbury to visit the cathedral and Christmas Market. Then in December on the solstice we have an early morning sunrise walk and breakfast. Christmas has been looked after for the group with a dinner and dance at High Wycombe Town Hall.

At home evenings, take-away food nights and the occasional Quiz Night also feature in our bi-monthly events programme. The Pub Night on the last Thursday of the month has currently settled at The Crown in Hazlemere. Along with the Lunch Club on the second Friday at the Spindle & Thread in High Wycombe these events are ideal for newcomers giving a chance to meet other members in an informal location.

If you are single, 40-60's, looking for a great social life and new friends then why not give Chameleon Singles Group a try? There are no strangers at Chameleon, just new friends to be made. The group has several local people from Totteridge, Terriers and the surrounding areas and you would be very welcome too. To find out more call contact Terrie on 01494 445816, Trevor on 01494 529067 or e-mail: info@chameleonsingles.org.uk. Visit the group on-line at www.chameleonsingles.org.uk or search Facebook.

Find us on 



Terriers Community Garden

Dark mornings and Dark nights. Our beds in the garden are slowly being cleared and put to sleep with last years leaves. There is Purple sprouting broccoli, Garlicks and Onions braving the cold. The weather has been against us recently by raining on Gardening days and dry when we cannot get there, but when the weather and our time coincide we have lovely sun coming through the trees and the colour of them makes everything glow. It is a beautiful sight. We now have the greenhouse, so we are trying to get a few seeds going to be ahead of things and putting away the fragile plants to protect them.

Jane and Pauline have been planting our bulbs in every available pot or trough so that when we get to Spring the colour in the garden should be fantastic. It is thanks to Jane we have regular photos on Facebook at www.facebook.com/terrierscommunitygarden she always finds something interesting to show you.

Have a wonderful Christmas everyone, come and see us, we will still be there weather permitting Thursday and Saturday mornings and on the 2nd Saturday in the month is the grounds day when we occasionally get extra help. We are still needing volunteers and you would be warmly welcomed even if it is freezing there.

Chiltern Stroke Club

Had a stroke? or a family member had a stroke?

**Come along and join us Tuesdays 2pm-4pm
in Brooks Lounge, Amersham Road, Hazlemere**

We are a local network of The Stroke Association; support and social group for stroke survivors and their families. Weekly exercise led by a qualified rehabilitation teacher, specialist speakers and social activities.

Contact: Adele 01494 728537 www.chilternstrokeclub.co.uk

Local Faith Group information for Totteridge & Terriers



St Francis Church

Located on Amersham Road in Terriers. www.terrierschurch.org.uk
 Revd Joanna Gallant: teamvicar@terrierschurch.org.uk
 Office email: churchoffice@terrierschurch.org.uk
 Tel: 01494 297933 Office Tel: 01494 462911
 Facebook: Friends of St Francis Terriers

Totteridge Baptist Church

Totteridge Baptist Church Located on Hillary Road, High Wycombe, HP13 7RA
 Our services are held every Sunday at 10.30am - All are very welcome.
 Tel: 07760 651953 E-mail: totteridgebc.secretary@gmail.com
 Website: <https://www.totteridgebaptist.org.uk>
 Facebook: <https://www.facebook.com/totteridgebaptist.church>
 Instagram: totteridgebaptist

St Andrews Church (C of E)

Located on Hatters Lane, High Wycombe HP13 7NJ.
 Services are every Sunday at 10:15am.
 Tel: 01494 - 529668

St Wulstans Catholic Church

Located on Hollis Road, Totteridge, HP13 7UN
 Regular Masses both on Sundays and at other times during the week.
 Tel: 01494 - 472576

St Augustines Church (Catholic)

Located on Amersham Hill, High Wycombe
 There are regular Masses on Saturdays, Sundays and during the week.
 Tel: 01494 - 523969

Totteridge Mosque

(Wycombe Islamic & Mosque Trust Limited)
 24 Totteridge Road, High Wycombe, HP13 6EB Tel: 01494 - 513440
 Also Muslim Education Centre at 4 The Parade, Totteridge Drive
 Tel: 01494 - 522786

Wise (Wycombe Islamic Society)

St Marks Close, High Wycombe, HP13 6GN
 Tel: 01494 - 259194
 Web: www.wise-web.org

Inner Wheel Club of High Wycombe



Alison Daniell was inducted into Inner Wheel by District Chairman Judith Elliot 2022-2023 and we are pleased to welcome her as our latest new member. (Picture below)

Rosemary Jordan ended her very successful year in July and handed over the Chain of Office to the new President, Elizabeth Norris at the July meeting.

It had been agreed that for 2023 to 2024, four members would share the High Wycombe Inner Wheel Presidency until July 2024. President Elizabeth handed over the Chain of Office to Kate Williamson in September and in the New Year Kate will hand over the Chain of Office to the next President, Jean Wiles for the third quarter. Jean will then hand over to Peggy Peckham for the final quarter. We wish all of them success and happiness for their terms of office. (Picture on left)

Eight members met at Little Marlow for our Autumn Walk. We set off from the King's Head in fine dry weather. Our route took us towards Marlow where the hedgerows still held a few late blackberries but in greater abundance were bright rosehips and haws, shiny conkers and spiky teasel heads. As the rumble of traffic from the Marlow Bypass became more noticeable, we then walked alongside the gravel pit of Westhorpe Park spotting swans with their 'ugly duckling' offspring, grebe, moorhen and ducks, before emerging onto the Thames towpath and our return leg alongside the river to Little Marlow. A warm welcome greeted us at The King's Head where we enjoyed a tasty lunch and convivial chat with all agreeing it had been a lovely way to spend the morning. In addition our international charity, The Book Bus, benefitted from the generous donations made by those attending. (Picture below on right)



Marion Harvey stitched Bee Cards for next year's **Manchester 2024 Convention** which will be celebrating 100 years of Inner Wheel. The cards will be used as home-made gifts to add to the goody bags which will be distributed to delegates attending the Convention



Remembrance Sunday at All Saints Church, High Wycombe

President Kate Williamson laid a wreath on behalf of Inner Wheel of High Wycombe during the Remembrance Service at the All Saints Church war memorial in High Wycombe



Steve Baker MP

The State Opening of Parliament took place on 7th November. This marked the beginning of the new parliamentary session. Its main purpose is for the Monarch to formally open Parliament and, in the King's Speech, outline the Government's proposed legislation for the coming parliamentary session. This is the first speech from the throne in the House of Lords that King Charles III delivered as monarch.

For the last 30 years there has been too much short-term political decision making, taking the easy way out rather than fixing the underlying problems. The Prime Minister is determined to change this. That is why he has taken a series of long-term decisions over the last year to deliver the change this country needs, including, tackling the costs of Net Zero; securing the Windsor Framework; reinvesting HS2 funding in local transport projects; and implementing the NHS's first ever long-term workforce plan.

As we head into winter, work across government departments to support those most in need continues. The Department for Work and Pensions recently allocated £4.8m from the Household Support Fund (HSF) to Buckinghamshire Council. This money will be spent on a wide range of measures for residents including providing grants to local welfare organisations to help those struggling with cost-of-living pressures.

The money from the Department also goes towards funding the Council's Helping Hand service which assesses applications for financial help and navigates residents to the most appropriate support. Since April this year, the Household Support Fund has assisted the Council's Helping Hand service to help thousands of people through this scheme. Minister Mims Davies recently came to High Wycombe to see the Council's work in action. She said: "Without this important funding from the Government and the hard work of the council and local community, the over 234,000 awards of support already made to the most vulnerable would not have been possible. I encourage anyone struggling with the cost of living to speak to the council to find out what support is available for them."

If you need help paying for food, bills, or other essentials, or debt advice, you can find out more from www.buckinghamshire.gov.uk/helping-hand. You can also visit www.buckinghamshire.gov.uk/cost-of-living for cost-of-living support and advice.

If you would like to get in touch with me please e: steve.baker.mp@parliament.uk. If you despair of bureaucracy and would like my help with a particular issue, please phone my constituency office on 01494 448408.

It only remains for me to send season's greetings and to wish everyone a very happy and prosperous New Year.



Improving Access to
Psychological Therapies



Are you struggling with any of the following:

**Feeling nervous,
anxious or on edge?**

**Unable to stop or
control worrying?**

**Little interest or pleasure
in doing things?**

**Feeling down,
depressed or hopeless?**

Healthy Minds Bucks is your local NHS Service offering tried & tested psychological therapies for people aged 18 or over to help them with stress, anxiety, low mood, employment difficulties and long term health conditions.

Let's talk We're here to help

Book your 1st appointment
through our website
www.healthymindsbucks.nhs.uk



Scan the QR Code or
phone 01865 901600
or text TALK & your name
to 07798 667169



Working together to improve wellbeing



Memory Partners



Totteridge Community Centre High Wycombe HP13 6UG

Thurs. 10.50 – 11.50

Further details from Sue

01494 532088 sastuart@globalnet.co.uk

Research shows that everyone can benefit from doing tai chi. There are many health benefits: physical, emotional, social, cognitive. Memory Partners is a charity which aims to spread these benefits widely to older adults. Donations are used to train more instructors. We especially welcome people with long-term health conditions to the café. Everyone breathes. Tai chi promotes health and wellbeing by helping you to breathe better.

Child Bereavement UK
REBUILDING LIVES TOGETHER

In partnership with
JUSTHELPING
National Christmas Tree Collection

Let us collect and recycle your Christmas tree

We'll be collecting in the following postcodes
from Thursday 11 to Saturday 13 January 2024:

HP7, HP8, HP9, HP10, HP11, HP12, HP13,
SL2, SL6, SL7, SL8, SL9



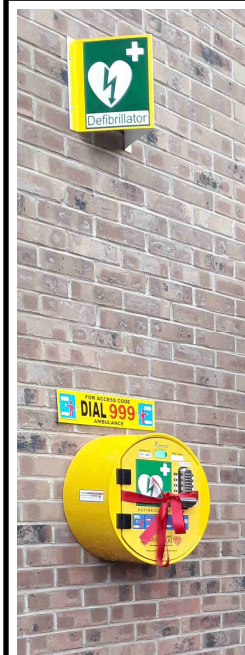
To make a donation and book your collection,
register online by 7 January 2024:

www.just-helping.org.uk

JustHelping supports volunteers, businesses and charities to contribute to their community and the environment. JustHelping's national Christmas tree collection raises essential funds for hospices and communities. JustHelping receive 15% of the net monies raised, after which, Child Bereavement will receive at least 90% of the remaining monies raised with some donations to other local charities.

South Central Ambulance

Defibrillator Locator



An app called "Save a Life" has been used for many years in our local ambulance area to identify the nearest defibrillator. We recommend all members of the public should know the nearest location in case needed. Some are available externally on building for 24 hour use—the 999 operator will provide a code to open locked boxes.

PLEASE NOTE: The "Save a Life" app has now been discontinued in favour of a national web site so please delete the app from your phone. Please go to defibfinder.uk and insert your postcode for detailed local information.

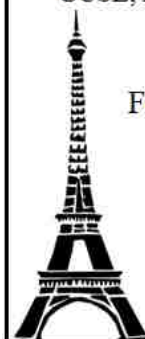
FRENCH TUITION

ALL LEVELS
WELCOME

GCSE, A-LEVEL, BEGINNERS
AND ADULTS

For further details please
telephone Fabienne

**01494
815749**



D J Coles Property Services

Professional High Standard
Established in 1999

- Interior & Exterior Decorating
- Paper Hanging
- Coving
- Carpentry & Kitchen Installations
- Laminate Flooring
- Door Hanging
- General Property Maintenance & Improvements

Free Estimates
Competitive Rates

Mobile: 07747 783015
Email: djcolespropmain@yahoo.com

One Can Trust—What to do if you need help

One Can Trust food bank works on a referral system from partners such as the Helping Hand team at Buckinghamshire Council, Wycombe Women's Aid and Citizens Advice Bureau. For more information: Tel: 01494 512 277

E-mail: office@onecantrust.org.uk

There are local food drop of points in our area at: West Drive, Amersham Hill, Lucas Road, Sheraton Drive, Underwood Road, Green Road & more.

WADSAD Wycombe and District Sports Association

Wadsad is based at the Wycombe Leisure Centre. We offer people of all types of disability a chance to take part in sport. . If you would like further information on becoming a member at WADSAD or Helping out then contact - Sarah Wiltshire 01494 450169 , or Rachel Pope 01753 889390.



www.buckinghamshirelottery.co.uk & search for T&T News
Players must be 18 or over. £1 per ticket. Always gamble responsibly.

Everyone needs a
helpinghand
from time to time



helpinghand

Find out what help is available and
how you can help others.

buckinghamshire.gov.uk/cost-of-living



TOTTERIDGE FC has provided football to the local youth in the community since 1996. For more information and contact details please visit our web site – www.totteridgefc.co.uk

YOUR LOCAL COMMUNITY FOOTBALL TEAM!

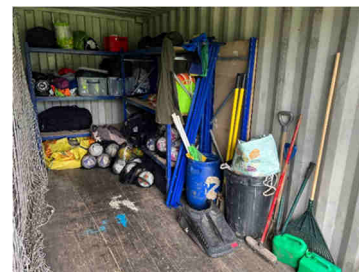
An update from the Chairman, Oliver Witney

WINTER IS ALMOST UPON US. We have had a wonderful start to the new season with many changes across the club as a whole.

This season we teamed up with Widmer End to help maintain private pitches. This has meant a number of teams have moved up to Widmer Fields over the summer and autumn for training, with some still on the Rye, and all teams having their home matches at this new location.

It has meant some logistical changes, including getting grass cut and lines marked. We have been fortunate enough that one of our volunteers, Jon Fairless, is a gardener so we have had some wonderful experience already added.

We have also had some wonderful sponsorship news. Barrett Controls have sponsored a change kit for our U11s team which has gone down very well with the children and parents. We give our thanks to Jamie for his help.



Steve, one of our helpers with the U11s also kindly used his spare time to get some racking inside one of the storage containers. This makes it easier organising the equipment that we use on training and match days.

Above you can see two examples where a little bit of help can make a big difference. The club has a number of short term objectives and long term. Since we started over at Widmer End it has been challenging but rewarding. As we look to the future we are looking to secure better maintenance equipment and for opportunities for the club to continue growing with younger age groups.

Saturday Morning Club, which we started in September, has been a roaring success. We now have a group of children that attend every week and absolutely love to learn the game. We want to start putting the older ones to test by having matches but we need another volunteer who is happy to run a team.

As I also said earlier in the update, we are also looking for sponsors. If you know of any local business that would like to sponsor a set of club shirts for our U13s then please get in touch!

If you are interested in joining, either as a player or volunteer, please contact myself, Oliver Witney on 07706888441.

Under 7s-10s – Oliver	07706 888441
Under 10's – LOOKING FOR HELP	07706 888441
Under 11's – Dean	07961 666394 (SQUAD FULL)
Under 12's – Olly	07706 888441 (2 PLACES AVAILABLE)
Under 13's – Carl	07723 314419 (SQUAD FULL)
Under 14's – Jon	07723 314419 (SQUAD FULL)
Under 15's – Khalid	07834 586786 (SQUAD FULL)
Under 18's – Tak	07838 579217 (SQUAD FULL)

we are cycling The cyclists' champion **UK** **Cycling with the Chiltern Hills Group**
Join your local Cycling UK group this winter

Chiltern Hills Cycling UK group offers both led rides and Coffee pots every Sunday. Now winter is here it's time enjoy the coffee stops, lunches and make new friends while riding in the countryside that surrounds our local area.

There is something for everyone of all ages who wants to get out with both pedal bikes and e-bikers welcome. Cafes such as Hughenden Valley Coffee Shop, Hildreth's, The Potters Arms at Winchmore Hill and Costa or Matilda's in Great Missenden regularly feature in the club rides list so you are never far from home.

While most of our rides are easy paced and suitable for all we do have some moderate, longer and off-road rides included within our rides list.

Chiltern Hills Cycling UK have a Zoom social on the 1st Thursday of each month and a meet up clubroom on the 3rd Thursday 8pm -10pm. For more Information:

Web: www.southbuckscycling.org.uk

E-mail: publicity@southbuckscycling.org.uk

For general information about Cycling UK visit: www.cyclinguk.org

Totteridge and Terriers News

68 Windsor Drive
High Wycombe HP13 6BL

Telephone: 01494 463107
Text / Mobile: 07905 888098
E-mail: editor@tandtnews.org.uk
Web: www.tandtnews.org.uk

BSB PRINT Printed by: BSB Print
Doncaster, South Yorkshire
Tel: 01302 - 985990

Readership Approx 3,750 per issue



Find us on

T & T News is published four times a year in March, June, September and December. We aim to get the magazine distributed by mid month of issue. In order that we can achieve this deadline we need your articles and advertising as early as possible. Our deadline for the spring 2024 edition is 20th February.

We thank all our advertisers and contributors for their support. However T & T News cannot endorse any product or service contain within this magazine. You are advised to check details of all goods and services offered. All contributions are accepted in good faith and opinions expressed are not necessarily that of the editor or T & T News.

That's about it...Join us again in March 2024. In the meantime you can catch up with the latest news on the web at

www.tandtnews.org.uk

Index to Advertisers

Applicant Mortgage Brokers	p.10	DJ Coles Property Services	p.22
Arrow Taxis	p.28	Feet Treat	p.8
Arnold Funeral Service	p.3	Football Coaching	p.4
Atlas	p.6	French Tuition	p.22
Aztec Chimney Sweep	p.4	Markland Gardening	p.4
Buckinghamshire Adult Learning	p.6	NHS Healthy Minds	p. 20
Cedar Barn & Stables	p.14	ST Autos	p.8
Come Dance With Me	p.27	Vets 4 Pets	p.14
Crystal Property Maintenance	p.4	Wye Residential	p.2
David Winterburn M&M	p.27		

2024 Advertising Rates:

B & W - Mini Ad £15 / £27 Quarter Page / £50 Half Page

Colour - Mini Ad £17 / £32 Quarter Page / £60 Half Page / £110 Full Page
(Full page adverts subject to availability—Spring 2024 deadline is 20th February)

T & T News Events Diary

Wednesday 24th January

Shopmobility Quiz Night at the Riverside Cub, High Wycombe

Teams of up to 6 people, £5 per person. Bar available. Call 01494 472277 to book.

Tuesday 20th February

T & T News Deadline for Spring 2024 edition of the community magazine.

Contact: editor@tandtnews.org.uk or call 07905 888098

Regular Events

Every 1st Monday of the month

Inner Wheel Club, Cricket Club, London Road, High Wycombe

Contact Sue Creed on 07719 719636 (See P.21 for more information)

Every 2nd Wednesday of the month

Wycombe Wenches W.I. Meeting 7:30pm Cricket Club, London Rd, Wyc.

Monthly meeting of the W.I. See page 7 for more information and contact details.

Every 1st Thursday of the month

Terriers Evening W.I. meeting 7:30pm. Cedar Park School, Hazlemere.

Monthly meeting of the W.I. New members welcome.

Local Halls

Totteridge Community Centre, Totteridge Drive

St Francis Church Hall, Amersham Road

Totteridge Baptist Church, Hilary Road

St Wulstans Church Hall, Hollis Road

See our web site at www.tandtnews.org.uk for a full diary listing

Come Dancing With Me

Regular classes
return soon
for
Beginners
and Intermediates



Latin
&
Ballroom
+
First Dances

Reserve your place now for the new groups

0787 353 8709

comedancingwithme.co.uk

David Winterburn Marketing & Media

In-house newsletters,
Local promotional work
Flyers for the small business
RSL Radio service management
Training and Production

Tel: 01494 – 463107
dwinterburn.fm@tiscali.co.uk

ARROW TAXIS

WHEELCHAIR ACCESS VEHICLES
MINI BUSES
CORPORATE ACCOUNTS
LOCAL & LONG DISTANCE
ALL MAJOR AIRPORTS
CONTACT NUMBER
01494 474764

INFO@ARROWTAXIS.NET
 SEARCH FOR US ON FACEBOOK