

## Volunteers

We are fortunate to have a large group of local volunteers all keen to promote the heritage around us via the museum and gallery, local events, collection work and community heritage projects. If you are interested in volunteering, please contact us.

## Heritage Supporters Group

We run a Heritage Supporters Group with a programme of lectures and outings to local history attractions. To find out more about the Heritage Supporters Group please email [museum@surreyheath.org.uk](mailto:museum@surreyheath.org.uk) or telephone 01276 23771.

## Second-hand book shop

Our second-hand book shop is now situated upstairs in the Gallery. We have a fantastic selection of books and operate on an 'Honesty' price policy.



## How to find us

- We are based in The Square Shopping Centre, opposite Argos.
- The nearest car park is The Square Shopping Centre. Knoll Road carpark is a 10-minute walk away.
- There is a coach drop off point in Knoll Road (opposite the Civic Offices) with a 5-minute walk to the museum.

Surrey Heath Heritage Services  
33 Obelisk Way  
The Square  
Camberley  
Surrey GU15 3SG  
Tel 01276 23771 or  
01276 707100 (SHBC)  
Email [museum@surreyheath.gov.uk](mailto:museum@surreyheath.gov.uk)  
[www.e-voice.org.uk/surreyheathmuseum](http://www.e-voice.org.uk/surreyheathmuseum)

Free admission  
Open Wednesday – Saturday 11am–3pm (subject to change)  
Closed bank holidays

As restrictions lift, further opening days/times for the Museum may be possible, please check the website for up-to-date details

Surrey Heath Borough Council  
[www.surreyheath.gov.uk](http://www.surreyheath.gov.uk)

[f](https://www.facebook.com/Surreyheathmuseum) Surreyheathmuseum [t](https://www.instagram.com/SurreyHeathMuse) SurreyHeathMuse



## Surrey Heath Museum and Gallery Exhibitions and events July – December 2021



A unique partnership between the  
local societies and local museum

Come and explore the history and  
local societies of our area in one local hub

[www.e-voice.org.uk/surreyheathmuseum](http://www.e-voice.org.uk/surreyheathmuseum)





## Covid-19 procedures

During the Covid-19 pandemic our objective is to reduce risk to the lowest reasonably practicable level by taking preventative measures. These include but are not limited to:

A one-way system throughout the museum

Sanitising equipment

Regular cleaning of hand touch areas

Zoom/ Whatsapp appointments for enquiries and outreach

**We have a changing exhibition area featuring the museum's collection and local societies.**

## The Heritage Services

Surrey Heath Museum and Heritage Services manages a museum collection featuring over 30,000 items of social, industrial and archaeology history. They include archives, paintings, costume, domestic items, farming items, photographs and natural history material.

## Who we are

Surrey Heath Museum and Gallery is a local heritage partnership in action, creating a heritage hub for the area. Surrey Heath Museum is managed by Surrey Heath Borough Council and has existed since the 1930s. It was originally housed in the local council offices and has a long history of collecting, documenting and promoting the area's heritage. Our partner, Surrey Heath Heritage Foundation, exists to protect and promote the work of Surrey Heath Museum.

## Archive area

We have an extensive local history archive and offer an enquiry service for researchers on an appointments system, please contact us or complete an enquiry form at the front desk.

## Education service

We provide a stimulating and cross-curriculum based experience that aims to enhance school learning. Please see our website or pick up our Education leaflet for more details.

## Reminiscence service

The act of recollecting past experiences or events through the use of museum objects is an important part of our heritage work and we work with older people in care homes or special venues providing handling objects on a variety of themes. Please see our website or pick up our Reminiscence leaflet for more details.

## Exhibitions

### Free French Forces

**Sat 3 July – Sat 18 Sept**

From 1941, the Old Dean Common was the site of a Free French Forces military camp. During World War II, the Vichy Government signed an armistice with the invading German army in June 1940.

This forced many French soldiers, sailors and air forces to escape to the UK. A young French Officer, Charles De Gaulle, led the Free French Forces in England, setting up many training camps in preparation for the allied invasion of France in June 1944. The exhibition covers the Free French history locally and celebrates our existing French links. The museum is working with local schools providing workshops on the Free French history.



### Dawn on You Art Therapist Dawn Buckley

**Sun 26 Sept – Sat 30 Oct**

Guildford-based Art Therapist, Dawn Buckley, believes in treating your heart and soul, your mind and your body with the greatest care and respect. Art is a medium for her to achieve this with her clients. The post-pandemic world we find ourselves in can be disorientating – we hope this colourful and inspiring exhibition will support our visitors to take up a pen, pencil, paintbrush, felt tip to create their own inspirational journey. Dawn will be running art sessions during the exhibition.

### Talk – Dawn Buckley

**'The healing of Art'**

**Thu 7 Oct · 7.30pm · £2.50**

### The Big Draw – Autumn Half Term

**Wed 28 and Fri 30 Oct · 11am–1pm  
£2.50, please book in advance  
4–12yrs**

Join Dawn for workshops packed with art fun!

#MakeTheChange

#BDF2021

#TheBigDraw



### Changing Childhood Christmas

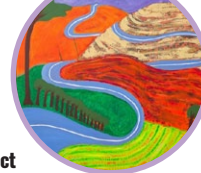
**Sat 13 Nov – Fri 24 Dec**

Celebrating Christmas through the centuries, this exhibition showcases the museum's collection of toys, games and puzzles – Christmas presents of the past.

### Family Day

**Sat 27 Nov · 11am–2pm  
Free drop-in session**

Enjoy our 'Changing Christmas' exhibition packed with toys from Christmas Past. Plus the chance to make a variety of Christmas decorations to take home. Suitable for adults and children.



## Events

### Toddler Sessions at the Theatre in the Square

**Bliss Toddler Sessions  
10.30am–12.30pm**

5 July

**Summer Colouring Pages**

12 July

**Make your own  
Balloon sword**

19 July

**Flower Power**

26 July

**Fleur de Lys**

### Summer for kids

**Daily 11am–4pm**

Everyday quizzes around the museum.

### Summer Holiday Workshops

**Every Thursday  
Thu 29 July – Thu 26 Aug  
11am–12.30/1pm**

Approx 1.5hrs per session  
Please see staff for individual times of each workshop  
Pre-booking required  
For children between 4–12yrs (under 8s may need adult supervision and support)  
£3 per child per session

### Build an Anderson Shelter Thu 29 July

Use your creative skills to build an Anderson shelter. Make it tough so that a Barbie doll/action man can fit in it and it is able to hold 1kg on top.

### Free French Escape Room

**Thu 5 Aug**

It is 1941 and you are working for the UK Government decoding secret messages. A group of strange messages are received. Use your skills and calm nature to decode these messages and help free the French from the Nazis.

### Dried Flower Frames

**Thu 12 Aug**

Learn how to dry and press summer flowers - then turn them into fabulous pictures.

### Never Ending Landscape

**Thu 19 Aug**

Never Ending landscapes never end... Creative drawing workshop with a difference.

### Army Recruitment

**Thu 26 Aug**

Meet your Drill Sergeant and see if you have what it takes to become a soldier of the British Army? Join us for a morning of fun, games and lots of laughter!



### Heritage Open Days

**Celebrating our French links**

**Thu 9 – Sat 18 Sept**

Thu 9 Sept · 7–8.30pm · £2.50  
**Talk on the Free French in  
Surrey Heath, Gill Riding  
The Museum**

Fri 10 Sept · 7pm

**Unveiling of Blue  
Plaques recognising the  
Free French Forces**

Old Dean Shopping Parade

Wed 15 Sept · 6.30–8pm · £2.50

**Free French Walk around  
Old Dean estate**

Meet at St Martin's, Old Dean

Sat 18 Sept · 10am–3pm  
**French Market, Camberley –  
plus events and activities**  
Park Street