



# LANCASHIRE LOCAL HISTORY FEDERATION

## *NEWSLETTER*

ISSUE NO. 14 FEBRUARY 2016

=====

LLHF NEWSLETTER EDITOR: MRS. M. EDWARDS

Telephone: 0161 256 6585 email: [m.edwards309@btinternet.com](mailto:m.edwards309@btinternet.com)

**\*DEADLINE FOR NEXT ISSUE: MAY 15th, 2016**

=====

Chairman: Julia Beeden 01995 602441 015395 61226 [jmb@nasuwt.net](mailto:jmb@nasuwt.net)  
Vice-Chairman: Morris Garratt 0161 439 7202 [morrisgarratt@sky.com](mailto:morrisgarratt@sky.com)  
Secretary: John Wilson 03330 062270 [j.r.wilson@cantab.net](mailto:j.r.wilson@cantab.net)  
Treasurer: Peter Bamford (Acting)  
Membership Secretary: Zoë Lawson 01772 865347 [zoe.lawson@talktalk.net](mailto:zoe.lawson@talktalk.net)  
Newsletter Editor: Margaret Edwards 0161 256 6585 [m.edwards309@btinternet.com](mailto:m.edwards309@btinternet.com)  
Website manager: Stephen T. Benson 01772 422808 [stephen.t.benson@btinternet.com](mailto:stephen.t.benson@btinternet.com)

=====

### **PLEASE NOTE DEADLINES FOR 2016:**

**FEBRUARY 1st; MAY 15th; AUGUST 15th; NOVEMBER 15th.**

The editor cordially invites you to submit your society information, and your own news, notes, reports and articles.

=====



Photo taken at Preston Minster (14th November, 2015): part of the commemoration of Battle of Preston (1715). Here we see enactment foot soldiers performing a drill. The event included displays of original documents from the time, loaned by Lancashire Archives, a wonderful model of the town showing the locations of the battle and live traditional music and song to set the scene. Zoë Lawson.

## Lancashire faces threat to heritage from LLC proposed budget cuts

**Zoë Lawson, LLHF Membership Secretary, writes:**

Over the next five years to 2020/21 Lancashire County Council needs to make savings of £262 million on top of those agreed within previous budget processes. As part of this, in November the council announced proposals to close five museums from 1 April 2016. The five are: the Museum of Lancashire in Preston; Fleetwood Museum; Queen Street Mill in Burnley; Helmshore Mills Textile Museum; and the Judges' Lodgings Museum in Lancaster. Whilst the council has offered the chance to come up with alternative service delivery models, including the operation of the museums by local communities and interest groups, achieving this by April 2016 is clearly unrealistic. Lancashire's museums face an uncertain future and hard decisions will need to be made combined with innovative solutions to ensure their survival.

In addition, LCC is proposing to reduce library provision from 74 fixed sites to 34. It is also to cease the much-valued Community Heritage Service, which promotes the museum, archives and library collections to the wider public. Since its inception in 2011, the CHS has organised many projects and events on themes such as the First World War, railways and family history, and held a popular conference last year in Chorley. There is a public consultation on the future of library services, which can be accessed from [www.lancashire.gov.uk](http://www.lancashire.gov.uk).

The future also looks bleak for Lancashire Archives with proposed funding cuts of around £189,000 by 2017/18 and 5 of the 22 staff leaving in March. In the coming weeks there is to be a public consultation concerning its opening hours. New fees and charges are likely but fortunately a charge for use of the search room is not being proposed.

The final decision about cuts to the budgets of all these services will be taken at a meeting of the full Council in February, after which there will be a further period when the public will be asked for their views on the precise form services should take. Once the budget has been announced the Federation is intending to write to all Lancashire MPs and the Culture Secretary expressing its extreme concern about the detrimental effects these cuts will have on Lancashire's heritage and urging the Government to reconsider its position on cutting Local Government budgets so drastically. The Federation would like to encourage member societies and individuals to do likewise.

There is no doubt that Lancashire's heritage is under a severe threat over the coming years and the Federation and its members must aim to give support where we can.

---

### REGIONAL HERITAGE CENTRE, LANCASTER UNIVERSITY

**Saturday 5th March - the 43rd Annual Archaeology Forum**

Topics will include prehistoric discoveries in the Forest of Bowland, recent work on Early Iron Age socketed axes, the exciting discoveries on the site of the Carlisle Northern Development Route, and the early history of railways in Britain. CONTACTS: website: [www.lancaster.ac.uk/rhc/](http://www.lancaster.ac.uk/rhc/)

email: [rhc@lancaster.ac.uk](mailto:rhc@lancaster.ac.uk) telephone: 01524 593770

---

### FRIENDS OF LANCASHIRE ARCHIVES

**Workshops on Palaeography & Probate**

The FLA is organising two workshops intended for local and family historians.

**The first, on Wednesday afternoon April 6th**, is a 'Beginners and refresher' course on English palaeography led by Jane Hamby and Chris Spencer. This will be looking at a range of documents from 1500 onwards and the session will be devoted to hands-on practical tasks.

**The second workshop is on Thursday afternoon, May 5th**, and is a 'Beginners guide to Lancashire probate records' given by Anna Watson, formerly an archivist at the Lancashire Archives.

As well as providing an introduction to the history of these records, the workshop will look at identifying the main types of probate documents and exploring the genealogical details you can hope to find in them.

Booking forms and details from Zoë Lawson: email: [zoe.lawson@talktalk.net](mailto:zoe.lawson@talktalk.net) telephone: 01772 865347

# GARSTANG HISTORICAL SOCIETY

Autumn 2015 brought the 300th anniversary of one of the most unusual spectacles ever to hit the streets of Garstang.... In early November 1715, Scottish and northern English Jacobites - supporters of the exiled Stuart monarchy - trooped through our town *en route* to Preston. They wanted, by force, to make James Stuart, the Old Pretender, King rather than the 'imported' Hanoverian King George.

Research is on-going regarding links between Garstang and the rebellion, but we know that several people from the town, including the then town clerk/lawyer, Roger Muncaster, joined the rebels.

The Jacobites (after the Latin *Jacobus* for James) were stopped in their tracks at the Battle of Preston and many, including the Garstang rebels, were later executed, three being buried at Churchtown.

To mark the event, and the outcome of the Battle of Preston, Garstang Town Crier Hilary McGrath performed one of her famous 'cries' from the Market Cross next to the Royal Oak, Garstang, on Saturday, November 14th at 11am.

Anthony Coppin

=====

## LLHF has its 2016 programme well in hand.

### LANCASHIRE LOCAL HISTORY FEDERATION : SPRING DAY SCHOOL 2016



There's still a lot of interest in traditional crafts! (Images are from Wikihow/Wikipedia)  
Our opening event of 2016 focuses on these crafts in historic Lancashire.

See details overleaf - **THEN MAKE SURE YOU BOOK YOUR PLACE IN TIME!**

=====

## St Helen's Historical Society 'At Home' (including the LLHF AGM)

St Helen's Historical Society is to host this year's Federation 'At Home'  
on Saturday 21 May at the award-winning *World of Glass* museum.

\*In the morning there will be a chance to see the unique archive film of John Harris and Theo Barker discussing their landmark book on *the history of St Helens*, followed by talks on *the local coal industry* by Geoff Simon and *the creation of the Sankey Canal* by Peter Keen.

\*In the afternoon there will be escorted tours around the *World of Glass* museum, including a **glass blowing demonstration**.

Details and booking forms for this event will be circulated shortly.

For further information contact Mrs Norma Cresswell: phone number 01744 754962.

=====

**Wyre Archaeology Group Newsletter 5** reports an excellent close-of-the-year Hot Pot Supper Night - and another treat was hearing the former Treasurer, Gary Thornton, talking about his special recent find, made at Skippool: a silver denarius of Faustina Junior dating to 145-175AD. She was the daughter of Antoninus Pius, Emperor 138-161AD. Gary pointed out it is one of few Roman coins to display the head of a female. The reverse shows Spes, the goddess of hope. Gary had found a silver denarius of the time of Hadrian several years ago, also at Skippool. (A splendid way indeed of waving cheerio to 2015! M.E.)



# ***GARSTANG'S GREAT WAR HEROES***

By Paul G. Smith & Anthony Coppin

Published by the authors. 2015 Pbk. 78pp £8 post free

There have been several books written about the Fallen of certain townships, using Great War memorials as starting points. This book covers much more than the nineteen names on Garstang's memorial as it also tells of another nineteen from Garstang who served in the '*war to end all wars*' and returned to their home town . The book's sub-title covers this point. The authors tell of yet more by explaining the build-up in Europe to this war and of the organisation of the Army into companies, battalions, brigades, divisions and corps.

The depth of coverage continues with the story of the memorial itself – the funding of it, the inter-village squabbling, the design within the budget of this small market township and its even smaller partner, Lower Barnacre, both parishes within the Garstang Rural District Council area. Because of the apparent decision by the War Memorial Committee to include on the memorial only the names of those living within their geographical boundaries, at least forty names of men who could truly claim to be 'local' and listed were omitted. (The authors are working on recording these men too). Some of these names appear on the memorials of neighbouring villages and various others which were already existing before the Garstang community memorial was erected – the Grammar School, the Congregational Church. St Thomas' Church and the Oddfellows Lodge.

The authors list twenty fallen '*Garstonians*' who actually enlisted in Garstang but were not included along with the nineteen on the memorial. How must their families have felt at this dreadful omission ?

Case-studies are given of the listed nineteen and some others are included as appendices. Amongst them are two Conscientious Objectors who were imprisoned and tortured for their beliefs before returning to live out their lives in the town.

Many '*local*' names crop up in the lists within the book – Kelsall, Singleton, Newsham and Parkinson. Other names are less common, but the authors have ensured that we shall remember them.

This book will be seen as a model for others yet to be written and published. Its black and white cover might be said to resemble one of the cards sent by post to notify the recipient of the death and funeral of the person named on it in the years before and after 1914-18. A copy of this book has been given to the pupils of each of Garstang's schools. Copies may be obtained from Anthony Coppin for £8 postage included - cheques to be made out to him at Derrington, By-Pass Road, Garstang. PR23 1NA

Bob Dobson

=====  
**LANCASHIRE LOCAL HISTORY FEDERATION : LIST OF SPEAKERS**  
**LAST AMENDED 7.11.2015**

This list has been compiled and maintained by the Federation for the use of members. It is made available to others as a gesture of good will. SEE WEBSITE. You are asked to bring any necessary alterations/ additions/deletions to the notice of Bob Dobson.

CONTACT: landypublishing@yahoo.co.uk Tel 01253 886103

Any information concerning fees is purposely omitted in the list, as this is a matter for the speaker, whose contact details are given.

=====  
**LANCASHIRE ARCHIVES** - from the January 2016 Newsletter. The Frank Kilroy Collection: 'The Wreck of the Mexico Lifeboat Disaster' DDX 3123. This has been donated by the widow of Frank Kilroy, who wrote a book about the event. The collection holds photographs of boats and crews, along with records linked with charitable collections and commemoration of the disaster, in which, on December 9th, 1886, 27 lives were lost.

## 2016 : 100 year Anniversary of the Battle of the Somme

To commemorate the year of the 100th anniversary of the Battle of the Somme *Omega Holidays* are organising a four-day tour to the site by coach and ferry. It includes visits to the Museum of the Great War, the Somme 1916 Museum, Beaumont-Hamel Newfoundland Memorial, Ulster Tower & Visitor Centre, **Thiepval Memorial** (see below), Lochnagar Crater, Tank Corps Memorial and Vimy Ridge. It also includes a train ride on Le P'tit de la Haute Somme train. A tour from the Lancashire area begins on August 19th and costs £299.99 pp.. Anyone interested in joining this tour please contact *Omega Holidays* on 01524 37500 or go online: [www.omega-holidays.com](http://www.omega-holidays.com)



=====

### **PENDLE FOREST HISTORY GROUP : Lecture Programme - Spring 2016**

March 16th Anthony Pilling: *Mills and Engines in East Lancashire*

May 18th David Joy: *The Cow Keepers of Liverpool*

July 20th Derek Clayburn: *Clock Making in the Dales*

Lectures start at 7.30 p.m. and are held at Barley Village Hall, Barley, Burnley, BB12 9JU.

We welcome guests to any of our lectures but it is advisable to supply some contact details prior to the evening as occasionally we have to make changes to the programme at short notice. This can be done through our website [www. Pendle Forest History Group .co.uk](http://www.PendleForestHistoryGroup.co.uk) where you will find an email link under the 'Contact' option.

=====

### **Business and Pleasure Combined: the Hiring Fairs of North-west England, 1890-1939**

Dr Stephen Caunce , a recently retired Senior History Lecturer from the University of Central Lancashire, has been invited to speak on his research into the North West hiring fairs for

#### **The Friends of Lancashire Archives on March 22nd, 2016.**

Before 1830 agricultural hiring fairs had occurred, for time out of mind, in convenient locations across the nation to bring farmers and potential employees together to agree engagements as male and female farm servants. Also known as 'mops' in many places (though not in the north), they were held once or twice a year close to traditional key dates, which varied according to the region they occurred in. Across the north, Martinmas, or November 11th, was the one chosen. Usually two or more hiring sessions were held in each venue around these dates.

Unlike other ancient fairs, they had no proprietors or links to medieval town charters, but acquired a generalised legal status by statute in 1563. Consequently, they were frequently called 'statute' hiring fairs, and they were governed entirely by tradition. Collectively these fairs had evolved into a specialised network of meetings by 1880, generally being held in market towns, but not always, and by no means all such towns hosted hirings. At the busiest fairs, several hundred engagements could be agreed in a couple of hours, and they were a very important part of the rural calendar. Lancashire was divided in that the southern industrial areas did not participate, but Lancaster and Ulverston both hosted major fairs.

Most historians of rural England held that fairs died out in the mid-nineteenth century due to changes in employment practices, and there is very little trace of them in archives. This is because they created almost no written records; but research via newspapers and recording of oral testimony has shown that across most of northern England they actually flourished into the 1920s, and maintained their functions in a diminishing way even after that. When actual hiring was over, they turned into general and boisterous communal celebrations, which stretched the rules of decorum far beyond the normal limits. Influential people reacted by starting a remarkably long-lived and determined campaign to abolish them, but made little impact apart from negatively influencing the few historians who have written about hiring at fairs.

This talk aims to set the record straight by exploring the actual events and the views of the rest of society. It provides a lively talk that offers a surprising view of northern rural life for those who know of it only through textbooks and classic novels. **Details and booking form on the next page.**



## Friends of Lancashire Archives

Charity Registration Number 518611

### 'Business and Pleasure Combined' The Rural Hiring Fairs of Lancashire, 1890-1939.



A talk by Dr Stephen Caunce

followed by a buffet

To be held at Lancashire Archives, Bow Lane, Preston, PR1 2RE,  
on Tuesday, March 22nd, at 7pm. Fee: £10

---

### Booking form for 'Business & Pleasure'

Please complete and return to: Zoë Lawson, Roselea, Mill Lane, Goosnargh, Preston. PR3 2JX  
Tel. 01772 865347; or, if paying by BACS, email this form as an attachment to : zoe.lawson@talktalk.net  
Name(s) .....

Address .....

Postcode .....

Telephone ..... Email.....

I enclose a cheque for \_\_\_\_\_ made out to *Friends of Lancashire Archives*

Or

I wish to pay by BACS. Please transfer funds to the following account:

Sort Code: 16-28-33 Account number 11771886. Ensure you give your surname as reference.

# CELEBRATING 200 YEARS OF THE LEEDS LIVERPOOL CANAL

Lancashire & Cumbria branch of the IWA and Leeds & Liverpool Canal Society: Joint event

Wednesday 27<sup>th</sup> April 2016 at 7.30 pm.

Pendle Hippodrome Theatre, New Market Street, Colne, BB8 9BJ. Doors open 7pm.

The theme of the meeting will be *the Leeds Liverpool Canal*, which is celebrating its 200 year anniversary in 2016.

The event is open to members of both Societies as well as interested non-members and people who want to find out more about the canal. Entry to the event is free and there will be a collection on the night. Come along and hear Mike Clarke, Chairman of the Leeds & Liverpool Canal Society, talk about the canal and the events planned for 2016.

For more information about the 200 year celebrations visit [canalrivertrust.org.uk](http://canalrivertrust.org.uk)



*With grateful thanks to Foulridge Canal Cruises for sponsorship*

---

## Friends of Foxdenton Hall & Park

We held a successful Picnic in the Park in June, and an enjoyable Hallowe'en event in October, but we have no photos of those events. However, here are photos of our Carols in the Park, held on Sunday, 13th December. As you see, the weather was rather wet - BUT more people came than expected and we managed to 'break even'. There was good trade in the refreshments tent and we all enjoyed the music of the brass band. Our thanks to all involved. Heather Luft





# THE VICTORIAN SOCIETY

The Society's photographic exhibition, *Saving a Century*, curated by noted architectural historian Gavin Stamp, will be on show free of charge at The John Rylands Library, 150 Deansgate, Manchester, M3 3EH, **UNTIL March 24th**, daily during Library hours. Using archive photographs and material from over fifty years of the Victorian Society's fight to save historic buildings, the exhibition charts the successes and defeats of the organisation that has done so much to change public attitudes towards the nineteenth century's best architecture. After being hosted at more than 60 venues around Britain, this showing of the exhibition **is the last**. It includes local images from **Manchester, Oldham, Ashton-under-Lyne, Middleton, Preston and Nelson**.

Steve Roman, Victorian Society Membership Trustee. 0161 434 2908

## VICTORIAN SOCIETY : MANCHESTER REGIONAL GROUP EVENTS, 2016

### THURSDAY 7 JANUARY

An illustrated talk: *The Holiness of Beauty: George Frederick Bodley and the Aesthetic Movement*. Michael Hall, author and current Editor of *'The Victorian'*. Cost £8.00

### TUESDAY 26 JANUARY

An illustrated talk: a joint event - *The Victoria Baths, Manchester: English home of the Irish-Roman (or 'Turkish') bath*. Malcolm Shifrin, retired librarian and researcher. £8.00

### SATURDAY 30 JANUARY

**Annual General Meeting** followed by a talk, demonstration and discussion:

*Social media for the New Victorians*. Joe O'Donnell, the Victorian Society's Media Officer.

**1.45 pm to 4.30 pm**. YHA Potato Wharf, Castlefield, Manchester, M3 4NB. Cost £5.00

### TUESDAY 16 FEBRUARY

An illustrated talk and exhibition visit: *'We built this City': the work of Manchester Architects over 150 years*. Simon Green, architect and Past President Manchester Society of Architects. **6.45 for 7.00**.

Sir Kenneth Green Library, MMU, All Saints, Manchester, M15 6BH. Cost £5.00

### THURSDAY 17 MARCH

An illustrated talk: *Abel Heywood and the Manchester Reading Public*.

Brian Maidment, Professor of the History of Print at Liverpool JMU. Cost £8.00

### TUESDAY 5 APRIL

An illustrated talk: *'Home Sweet Home': Reflections on Turn-of-the-Century Interiors*.

Stuart Evans, design historian and researcher. Cost £8.00

### THURSDAY 21 APRIL

An illustrated talk: *Thomas Witlam Atkinson (1799-1861): A Forgotten Victorian Architect and Artist*.

John Massey Stewart, writer, freelance lecturer and photographer. Cost £8.00

### THURSDAY 26 MAY

An illustrated talk: a joint event with the Manchester Modernist Society: *The Northern Roots of Unwin and Parker*. Dr Mervyn Miller, leading expert on the early Garden City movement. Cost £10.00

**Unless shown otherwise**, talks take place **at 7.00 for 7.15** at the Friends Meeting House, 6 Mount Street, Manchester, M2 5NS and there is no need to book in advance.

website [www.victoriansociety.org.uk](http://www.victoriansociety.org.uk); email: [manchester@victoriansociety.org.uk](mailto:manchester@victoriansociety.org.uk)

ALL EVENTS ARE OPEN TO THE PUBLIC

=====

**LiDAR Landscape Survey Workshop March 19th, 2016 10am - 4pm**

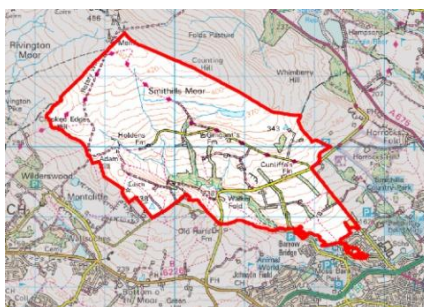
**AT** WestmorlandHotel, Westmorland Services M6 . Lunesdale Archaeology Society will be running a workshop on how to use free software to analyse LiDAR data. Strictly limited to twenty participants. Advance booking essential. LAS members £15, non-members £1. **Contact:** [lunesdale.archaeology@gmail.com](mailto:lunesdale.archaeology@gmail.com)

## BLACKPOOL MUSEUM PROJECT TEAM

The Team has reported its progress so far to those who have 'supported' it in the widest sense.

\*Over 6000 of you have shared your ideas and stories with us, which has informed the content of the Museum. \*We've recruited 55 volunteers and given them training in object conservation and oral histories, and have helped them to become Dementia Friends. \*We have provided work placements for over 50 students from [Blackpool and the Fylde College](#), including photographers, fashion designers and game developers. \*Our business fundraising and governance teams have been hard at work developing the business model for the new Museum. \*We've appointed [Buttress](#) as our architects and [Casson Mann](#) as our interpretive designers and together we have created the first draft of the Museum. \*\*\*None of this would have been possible without your continued support for the project, so thank you very much!

(Contact via website: [blackpool.gov.uk](http://blackpool.gov.uk)) M.E.



**SMITHILLS ESTATE: ONLINE SURVEY** The Woodland Trust manages an area of the Smithills Estate and has posted a public questionnaire, the responses to which will inform the Trust's management. To see the questions follow this link: <http://tinyurl.com/smithills> Answer them if you wish, and **SUBMIT**. The map (taken from that site) shows the area managed by the Trust. M.E.

## MANCHESTER & LANCASHIRE FAMILY HISTORY SOCIETY

**MEMORY BOXES: Plea for help with a Manchester Archives project from John Marsden**

This project aims to assemble boxes which can be used by those caring for dementia sufferers to stimulate their memories and encourage talk about their lives and experiences.

Two kinds of 'Memory Box' are being considered: collections of photographs and collections of artifacts.

**This pilot** will concentrate on the photographic aspect. The intention is to provide a collection of photographs centred on particular topics and for each photograph to be accompanied by some text to help the carer.

Archives would like us to identify photographs from

either the Manchester Local Image Collection <http://images.manchester.gov.uk/>

or the Archives+ Flickr image collection <https://www.flickr.com/photos/manchesterarchiveplus>

which tie in to the specific topics, and to provide text information to accompany these. The information which might be included could be very wide, for example: *The shop sold loose biscuits/There were gas street lights until the 1950s/The Salvation Army band played on the corner every Sunday.*

**NOTE:** It is not intended that the text should be a 'history' document so much as a collection of anecdotes which will stimulate thought and conversation. We are looking at information which would be relevant to a period of around 1940 to 1970. The topics for this pilot are: Gorton, Northenden, Harpurhey, Belle Vue Complex, Going to the Cinema, Holidays. If you would like to help with this project then please reply to [office@mlfhs.org.uk](mailto:office@mlfhs.org.uk)

Please note the following:

title your posting "Memory Box - Gorton", "Memory Box - Northenden" etc. so that responses can be **easily managed**;

use only images from the local image or Flickr collections, since Archives can be certain that there are **no copyright problems** with these.

## 50 YEARS OF GARSTANG HISTORICAL SOCIETY

Garstang Historical Society members commemorated their own historical milestone at their December 2015 meeting, when the group marked its 50th anniversary...

Chairman Peter Burrell told members and supporters at the 70-strong meeting that the celebration was to mark the 50th year rather than the specific anniversary. The society was founded circa 1965. The current uncertainty regarding the group's precise founding date had led to a decision to hold the cake-cutting celebration at the end of the year.

The society, which meets monthly at Garstang United Reformed Church, regularly sees attendances of up to 80 people - though the November 2015 meeting set a record with 120 in attendance for a lecture on the 1715 Battle of Preston by Dr Bill Shannon of Fulwood.

At December's celebration the guest speaker was Mr Andy Lowe, a former Lake District National Park Conservation Officer, who gave a talk on the traditional architecture of Lakeland villages. He was introduced by Chairman Peter Burrell and thanked by Committee member Wendy Pain.

The society has recently adopted a logo which depicts the remains of one of Garstang's oldest buildings, Greenhalgh Castle. The logo, drawn by Fleetwood historian, author and archaeologist Brian Hughes, also featured on the 50th birthday cake, which was made by 'Iced', of High Street, Garstang. It has also been used for a badge given to members to mark the society's 50th year.

\* For more information visit [www.garstanghistoricalsociety.org.uk](http://www.garstanghistoricalsociety.org.uk)



Celebrating 50 years of Garstang Historical Society: Anthony Coppin (Vice Chair/joint Programme Secretary), Maureen Spiers (Treasurer), Peter Burrell (Chair) and Margaret Marsden (joint Programme Secretary).



Garstang Historical Society's logo on a button badge issued to members



The 50th Anniversary cake

## ROUND AND ABOUT

1. Volume 46, Issue No. 2, *Cheshire Ancestor*, the Journal of the **Family History Society of Cheshire**, carried an interesting report of the search by a lady member for her Macclesfield ancestor Cpl. A. Clarke, M.M.. It was a tricky search by someone new to genealogy, starting with a relative's name on a war memorial, then involving a family member's move to a fairly distant location at a time when local transport was expensive or not available, the discovery that a grandfather known in the family to have had three siblings in fact had three others of whom no-one had heard tell, and difficulty in finding a registration of the relative's death. There at last followed a chance discovery of the death registered '**in the Lytham sub-district of Fylde, Lancashire**'. No mention had ever been made within the family of links with that location.

The searcher now applied for a copy of the relevant death certificate. Corporal Clarke had died in the **Squires Gate Military Hospital** (which later was to become the Pontins holiday camp), in the Lytham sub-district of Fylde.

This case history is being shared here as *\*it highlights a weak spot in oral history, \*it demonstrates that there is no substitute for obtaining a death certificate, and \*it may help other searchers chasing a puzzling Lancashire connection.*

2. Journal No. 33, Winter 2015, issued by **Bury Local History Society**, reported that 8 local Trade Directories have now been digitised and are fully searchable on the Bury MBC website, which has recently been upgraded. This is a significant achievement and a boon for researchers. The website address is:

<http://www.bury.gov.uk/undex.aspx?articleid=10880>

The BLHS website address is: [www.burylhs.org.uk](http://www.burylhs.org.uk) The 2016 Programme follows.

**Meetings are held monthly (1st Thursday, 7.45pm)  
in Clubroom of St. Marie's Church, Manchester Road, Bury.**

March 3	Early Years	Members tell of their younger days.
April 7	Early Lancashire Maps	Speaker: Diana Winterbotham
May 5	Liverpool Cowkeepers - a family history	Speaker: Dave Joy.
June 2	Bury on the Bookshelf	Members tell of books on local history.
July 7	Radcliffe Tower	A history described by archaeologist Vicky Nash
August 4	Local History Walk.	
September 3	ANNUAL GENERAL MEETING.	

### 3. **LANCASHIRE PLACE NAME SURVEY**

[www.lpns.org.uk](http://www.lpns.org.uk)

The LPNS November Newsletter reported that research into C19 evidence of **place names linked with football** had produced interesting evidence. Work on the tithes for Bury in Salford Hundred had shown that the original township boundaries included Gigg Lane - now the home of Bury's football team - but (apparently) no 'Gigg'. The tithe map (Lancashire Archives, DRM 1/26) shows that at that point the Bury boundary did not reach the river Roach. The river otherwise formed Bury's eastern boundary. Search of the Database which holds the Ordnance Survey entries for pre-1974 Lancashire found another football place name: in Quernmore (east of Lancaster). Searchers are on the alert for other examples.

4. Jim Lancaster (Bury, Lancs.) writes: **The Catholic Family History Society (North West Region) is to hold a Conference on Saturday, March 12th, 2016, 11.00 a.m. to 4.0 p.m.**

at the Salford Diocesan Archives, St Augustine's, Grosvenor Square, M15 6BW.

'*RESEARCHING CATHOLIC FAMILY HISTORY* (including using Internet Sources)' will be led by Dr Brenda Hustler, an experienced Family Historian, who will give presentations in the morning and the afternoon. Registration and Coffee at 11.00 a.m.. Lunch is included and there will be time for discussion, help with research and viewing records in the Archives. Members and non-members welcome.

Cost for the day: £12.00 including lunch and all refreshment (payable in advance). **To book**, please contact Mrs Diana Henaghan, 15 Maveen Court, Edmonton Road, Woodsmoor, Stockport, SK2 7BG or email her [dmhenaghan@gmail.com](mailto:dmhenaghan@gmail.com) - before February 28th 2016. Cheques payable to: CFHS North West.

*A Matter of Convenience : Sanitary Improvements in Working-class Housing in Lancashire 1830-1890*

This interesting and informative talk brought back many memories to the audience, as it did indeed to Dr. Alan Crosby, the speaker. It was surprising how many people had been affected in the earlier part of their lives by Victorian sanitary arrangements.

The growth of legislation and the development of technology went hand in hand with the improvements that occurred throughout C19. In the earlier part of the century particularly, little provision if any at all was made for the efficient disposal of human waste. One of the curious things about this topic was that the houses were generally built before sanitary provision was made. The Kirkdale area of Liverpool was a case in point, where sanitary waste had to be carried out of the house and deposited in middens. These houses were inhabited till the 1930s.

There were many different arrangements for disposal throughout Lancashire; each local authority made its own regulations. There were four basic methods to deal with the problem.

1. Private or public open ground with no systematic procedure for removal.
2. Private or communal ground, removal by private enterprise.
3. Private or public ground with subsequent removal and dumping without formal sanction in public space.
4. Controlled deposit in some form of receptacle and subsequent removal by private or public enterprise on a regular basis.
5. Removal by drains/sewers requiring organisation by a statutory organisation, local authority or limited company. This came later.

Dr. Crosby gave us some examples. In 1841 Whitehaven had no provision at all! In Lytham in 1875 the 'Nuisance Inspection for the Improvement Commission' described houses where human and animal waste rose to half way up the windows and this waste would be subsequently sold for manure once a year or sometimes every two years. Night soil collection had become typical by c. 1900. Warrington used the water carriage method. However, Warrington's waste drained untreated into the River Mersey at Warrington Bridge. Blackburn's local authority insisted on wider back accesses to allow carts to dispose of waste from the privies. Previous to this the narrow backs had huge heaps of night soil in a sort of hump configuration because the occupants shovelled the waste from their privies into the backs outside their houses.

Dr. Crosby went on to describe the different technologies used for privies. There were types over a cesspit often using ashpits, dry earth closets, the tippler toilet and the Bevel Midden method, to name but a few. Piped water supplies from the 1880s onwards meant that flushing sewers started to come into use. In Bury and Manchester sink water was used which flushed the waste down the drains. These methods did alleviate the problems somewhat but it would be well into the C20 before sanitary waste problems was effectively solved.

The canals were used to take human and animal waste to the farming and market gardening areas of Lancashire. The canal barges had a lucrative trade in taking the phenomenal amount of waste from Liverpool to Burscough to be used in the market gardens of the district.

This talk gave us a fresh insight into the home lives of our not-so-distant forebears.

Jeanette Dobson

=====

**WIGAN ARCHAEOLOGICAL SOCIETY** The November Newsletter (no. 188) reported involvement in the Carbon Landscape Project focused on a large area designated a Nature Improvement Area, likely to lead to improved landscapes and greater awareness of cultural heritage. At an associated workshop run by Lancs. Wildlife Trust, 2 WAS members suggested part of a grant on offer could be used for geophysics equipment. An invitation to work up a relevant proposal for the application was taken up and the application for funding is to be progressed. A local company (Syigma Solutions) making such equipment got in touch with WAS, keen to allow their equipment to be used without charge for heritage projects in the area. It also offered training sessions. The Council gave permission for Haigh Hall grounds to be used, specifying an area noted as 'having potential archaeology' in a desk-based assessment linked with the Dig Greater Manchester project. Five members were due to have their training shortly after that issue was to be published. Issue 189 duly reported and also told of a second chance to use the equipment, at Kirkless Hall. Both produced encouraging survey results; the second's results will probably influence the forthcoming year's excavations when WAS returns to Kirkless Hall. M.E.

# LANCASHIRE'S ROMAN ROADS - LATEST LIDAR DISCOVERIES

David Ratledge

## Ribchester - Catterall Update

Last issue I reported on the discovery of a 'new' Roman road from Ribchester to Catterall (for Lancaster). Following this, I was contacted by Neil Airey. He pointed me in the direction of Lancashire Record Office document DDKS/1/39. This concerned the land boundaries for Kidsnape - one of the farms the road crossed. This document was dated to around 1200AD and one of the boundaries for the farm was described as 'the old causeway'. A causeway described as 'old' in 1200AD must surely be the Roman Road.

## Walton-le-Dale to Lancaster

Lidar had identified this road around Garstang but still left a big gap to work out back towards Preston. This stretch (see right) proved very difficult to locate and only revealed itself when the illumination angle - the position of the virtual Sun used to illuminate the Lidar data - was directly at right angles to the road.

This has extended the known length down to Dean Brook at Barton. This confirms that the A6 at Barton, which does look so like a Roman road is, in fact, not Roman at all. It is actually a turnpike road.

South of Dean Brook I am struggling to find the road but my guess is that it was aligned on Banister Hill, Durton Lane. This has been cut away by the Motorway now so confirming this is not going to be easy.

## Manchester to Ribchester

The course of this road is mostly well recorded except around Edgworth, where so many steep valleys made a direct line all but impossible. However, Lidar has now been able to fill in the missing length with reasonable confidence. A map of the route is available on the web site (see below).

## Lancaster to Watercrook

An excavation took place in early November 2015 to try to locate this elusive road at Bolton-le-Sands. Results are still being written up but substantial remains of what appeared to be a road were found. Whether it is the missing road will probably need more excavations to verify - hopefully later in 2016.

All the new alignments found have been deposited with Peter Iles, Lancashire's Strategic Adviser for Archaeology, for inclusion in the County's Historic Environment Record (HER).

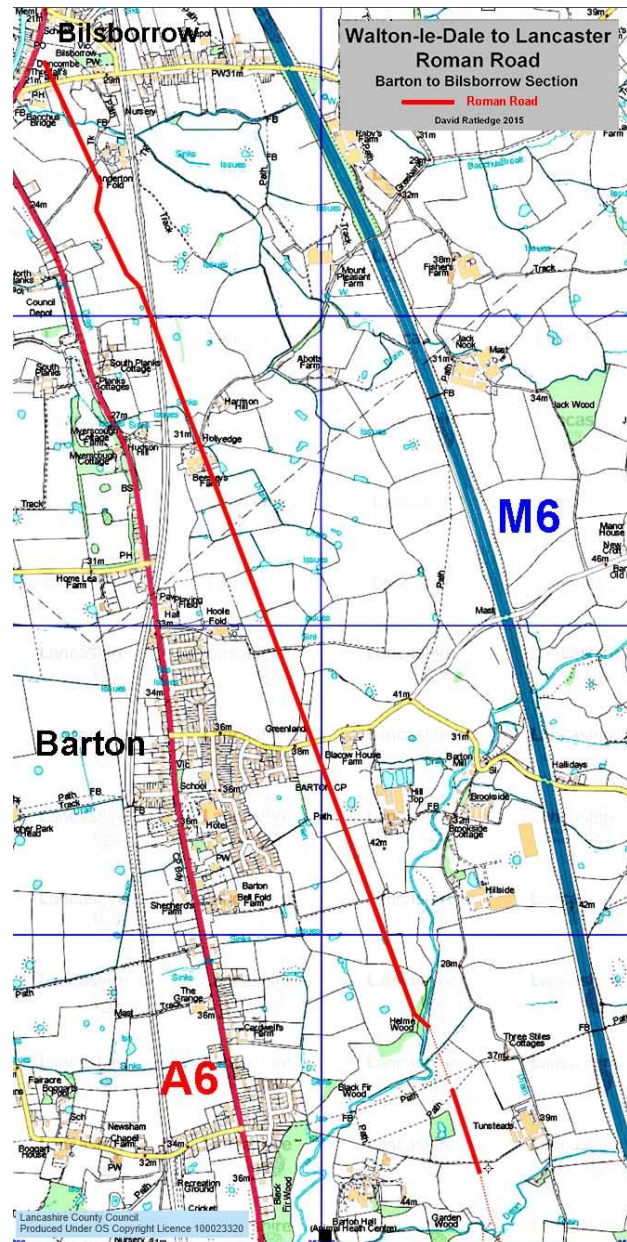
## Websites:

*Roman Roads in Lancashire:*

<http://www.romanroads.org/gazetteer/lancspages.html>

*Lancashire's Historic Environment Record (HER):*

<http://new.lancashire.gov.uk/libraries-andarchives/archives-and-record-office/historicenvironment-record.aspx>



## MIDDLETON CIVIC ASSOCIATION

Middleton Civic Association held its 2016 Annual General Meeting in its regular meeting place, the Sessions Room in *The Old Boar's Head* inn, on Long Street, Middleton, on Wednesday 13 January. The existing Officers and Committee members were re-elected unopposed, and an appeal was made for an additional committee member. The Committee consists of Mrs Audrey Riches (Chairman), Mr Morris Garratt (Vice Chairman and Programme Secretary), Mr David Lees (Hon. Secretary), Miss Marlene Whittaker (Hon. Treasurer), and, currently, three committee members: Mrs Karen and Mr Andrew Brierly, and Mrs Christine Grime. Mr Peter Pallister is the Hon. Auditor.

The Annual Report for 2015, compiled by the Vice Chairman, noted that, through our representatives, we received regular reports on the activities of the Friends of Edgar Wood, the Friends of Jubilee Park, the Friends of Boarshaw Cemetery, and the Green Volunteers. The Association also maintains regular contact with the Officers of Rochdale Metropolitan Borough Council. During the year we opposed a planning application in respect of 58 Long Street, for change of use on the ground floor to a hot food takeaway, and representations were also made concerning the condition of both Tonge Hall and Hopwood Hall, and McBride's Park bridge, to which we received updated reports from the Council.

Not for the first time, the Report noted the lack of new – younger! – members, something being felt by most groups these days. The lecture programme was completed as published, except that the December speaker was prevented from coming for personal reasons, and due to extreme traffic conditions caused by incidents on the M60 and the railways, the replacement speaker, the Vice Chairman's wife, was also prevented from appearing! Both have been re-booked for 2016. Only one visit was made this year, namely to Clayton Hall in May, in association with members of the Lancashire and Cheshire Antiquarian Society. Morris Garratt

**The Association's lecture programme for 2016, not yet fully completed, is as follows:**

January 13	Annual General Meeting followed by Members' New Year Social Evening.
February 10	<i>By sea to Australia in the nineteenth century.</i> Mrs. Eileen Garratt.
March 9	<i>Westfield Memorial Village – a story of survival.</i> Mr. Martin Purdy.
April 13	<i>Jewish Life.</i> Mrs. Barbara J. Fraser.
May 11	<i>The origins of place names.</i> Mr. Peter Watson.
September 14	<i>How to put a Scotsman on the English throne.</i> Mr. Peter Gray.
October 12	<i>The Great War and Chadderton's involvement.</i> Mr. Michael Lawson, BEM.

---

## HORROCKSES

*History, Art, Archives and Fashion*

Saturday, March 5th, 2016 at Lancashire Archives, Bow Lane, Preston PR1 2RE

Join us for an event celebrating the history of Horrockses, Crewdson & Co, funded by the Textile Society Audrey Fund. At Lancashire Archives we hold the historic records for Lancashire going back 900 years. Among the collections are the records of Horrockses, Crewdson & Co. of Preston. In 2015 The Textile Society generously funded cataloguing work on this collection to improve access to this important piece of our textile heritage. As a celebration we are holding an event on SATURDAY, MARCH 5th, with an art and textile workshop with local artist Helen Draper, who worked as artist in residence at Helmshore Mill; and talks on: the Horrockses collection by archivist Keri Nicholson; the history of the company by David Hunt; and Horrockses Fashions by Dr Christine Boydell. There will also be a number of textile-inspired art displays by Helen Draper, Bella Leonard (Artist in Residence, Gawthorpe Textile Collection) and Fiona Rainford (Artist in Residence, Lancashire Archives) including work inspired by Queen Street Mill, and an exhibition of Horrockses historic records.

We are also hoping that there will be representatives from the Friends of Lancashire Archives, The Harris Museum and Gawthorpe Textile Collection.

This event is FREE but booking is essential. Light refreshments will be provided.

**Full details of the programme are yet to be confirmed;** however, for more information or to book a place provisionally, please contact Victoria McCann:

email: [record.office@lancashire.gov.uk](mailto:record.office@lancashire.gov.uk) Telephone: (01772) 533039

## INDUSTRIAL MUSEUMS UNDER THREAT

If a fire had last night reduced Helmshore Mill (photos 1, 2) in the Rossendale Valley to ashes, the loss of a unique record of cotton manufacturing would be widely acknowledged and regretted. It authentically represents the organic growth of Lancashire's cotton textile manufacturing from the earliest use of water-powered machinery, embedded in a typical landscape and community setting, with superb collections. Yet when local councils cannot afford it due to funding cuts, or even discuss raising cash by selling, opposition barely stirs. Queen Street Mill's case (photos 3,4) is less obvious, but as the only surviving authentic loom shed powered by steam, it continues the story of the industry from its prime to collapse, again in an a representative and dramatic setting. Both are integral parts of a World Heritage Site, even if it is not officially recognised. The tiny handful of other 'heritage' mills almost all face the same threat of being too large for local authorities to support. None would fill the gap caused by closing Helmshore and Queen Street Mill. Re-opening would probably never be seen as affordable, so this is a crucial part of our nation's story which we are apparently ready to forget.

Yet we are a hugely rich nation, and the heritage boom has funnelled vast amounts of money into stately homes. When Liverpool faced bankruptcy some decades ago, the threat to its fine art collections led to nationalisation and investment, which then contributed massively to regeneration. A single Italian painting sold for export can create a campaign that raises millions of pounds in a few months, including public money donated through various routes. But historic textile mills that sum up the core experience of an industrial revolution that went on to change the whole world by showing that powered machinery could produce goods on a scale never dreamed of before, and at prices ordinary people could afford? No such claim on the nation exists, except for the National Trust's Quarry Bank, in its rural setting. Otherwise they must compete with Alton Towers as commercial visitor attractions, or local councils must withdraw care from the elderly and close libraries and toilets. The sums of money will make no real difference to the council tax, so the action is largely symbolic.

Stephen Counce



Photo 1 *friendsofhelmshore*  
.co.uk



Photo 2 *friendsofhelmshore*  
.co.uk



Photo 3 *flickr.com*



Photo 4 *flickr.com*

---

## NEWS FROM ARDWICK

The 'Celebrating Ardwick' film is now on You Tube. Viewers are welcome to share it with anyone.

Here is the link:

<https://www.youtube.com/watch?v=h5hvfrzeMug>

Alison Crush, Community Hubs Development Officer,  
Greater Manchester Centre for Voluntary Organisation (GMCVO),  
St Thomas Centre, Ardwick Green North, MANCHESTER. M12 6FZ



# LANCASHIRE ARCHAEOLOGICAL SOCIETY

**On the 15th of January we held our annual A.G.M. When the formal section was over we had 4 short talks.**

Our first talk was by Robert Wood, a student doing a Masters degree at UCLAN, who has benefited from the Ben Edwards Fund which was set up by L.A.S. in memory of our founder Ben Edwards. This talk was on the subject of Arran and Kintyre: a virtual analysis. He was investigating chambered tombs, stone circles and rock art to see if he could discern similarities or differences in location and what this might tell us. The most significant proportion of these monuments consists of chambered tombs and the rock art is the least extensive. (Most of the rock art was confined to Kintyre.) Mr. Wood looked particularly at viewsheds at each location and one interesting point he noticed was that sites by the coast tend not to have their viewshed out to sea but that more inland sites did. Indeed the coastal locations often have their sightlines impeded by mountains and usually by one in particular: Goat Fell, which is the highest mountain on Arran. Did the builders do this deliberately? The landscape rises up and restricts the view. Most of these monuments lie in valley bottoms, although there are a few sites on the peaks. It would seem that by placing the monuments where they did the builders were trying to achieve a particular natural configuration.

Mr. Wood then contrasted his findings with those from his previous year's work in North Uist, Benbecula and South Uist. There he investigated chambered cairns, passage graves and Clyde cairns. He found that 83% had visibility of lochs, 100% visibility of shores and 74% visibility of other chambered cairns. What was going on to account for these location preferences? Mr. Wood is still analysing his work and when it is completed he will update us on his findings.

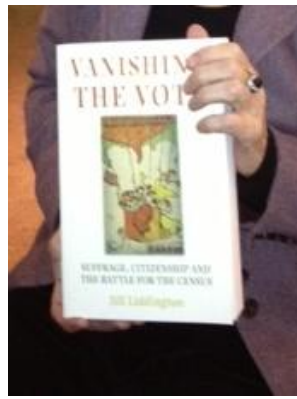
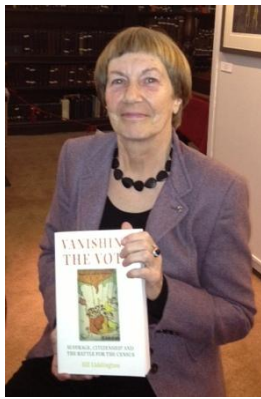
The next talk was given by Dr. Bill Shannon of our Society; it dealt with experimental archaeology - his own! While in the Isle of Man on holiday last year he visited the Manx Museum and was inspired by a display he saw there. It was focused on flint tools from the Mesolithic period. He found some flint pebbles eroded from a cliff and decided to crack them to see if they would contain usable flints. He made some microliths and then decided to make short spears or darts with a flint tip. To do this he had to make a glue from birch bark. He explained how he made it and then with it attached a flint point to a dart and also attached a goose feather for a flight. He was successful in his experiments and then went on to construct an atlatl which has the same characteristics as a ball thrower for dogs. He then used this to throw the darts.

The third talk was by Mrs. Margaret Edwards, who incidentally is the widow of the founder of L.A.S., Mr. Ben Edwards. This talk was on the Special Chinese exhibition at the Whitworth Museum in the autumn of 2015. This was a thought provoking talk on the meaningfulness of using ancient artifacts, without archaeological provenance, in an artistic display. It was constructed by the celebrated Chinese artist Ai Wei Wei. This piece was called 'Still Life' and consisted mainly of hundreds of Stone Age axes (though there were also many loom weights) which were arranged in designs that created ripples and produced a three dimensional effect.

Our last talk was given by another of our members, Derek Forrest, who spoke on a topic he has been researching lately - the Home Guard - particularly in Leyland. His title was 'The Lost 12th', referring to the 12th Battalion of the Lancashire Regiment of the Home Guard. It was created after the fall of France in 1940 and disbanded in 1944. The men had to carry out various tasks, such as climbing the roof of St. Andrew's Church in Leyland, mainly to watch for parachutists. They were also trained to go from roof to roof of buildings, so had to be fit men. (About 40% of the men were veterans of the 1st World War.) The Leyland Home Guard also had a bomb disposal squad - but only one bomb was ever dropped on Leyland. They were initially poorly armed but later on were well armed with rifles and ammunition.

Derek then brought his talk to a close by mentioning the built heritage associated with the war, such as pillboxes, and stressing that it was our duty to maintain them. This was another interesting and fascinating talk and concluded what had been a very informative and enjoyable evening.

Jeanette Dobson



Jill Liddington holds her book, 'Vanishing for the Vote', after her lecture at the Portico Library

**Jill Liddington's talk, *Vanishing for the Vote*,  
presented at the Portico Library: January 18th, 2016**

A large crowd, including a group of students from the Sorbonne, gathered to hear Jill Liddington talk about her book, *Vanishing for the Vote*, at the Portico in Manchester, many having had their interest sparked by the film *Suffragette*, released last year.

Jill's book is about the boycott of the 1911 census by radical suffragettes, but she started the talk by describing the more moderate suffragists who were particularly associated with the cotton towns, especially the weaving towns of north Lancashire. The 1906 Liberal government had been elected by a landslide and Jill paid tribute to the genuine welfare reforms they wanted to introduce. They needed reliable census data to help with these reforms and this led to the new questions (relating to length of marriage and early deaths of children) on the census forms - which were, of course, to be filled in by the men who were heads of households. Many of the suffragists, especially those involved with labour politics and the Women's Co-operative Guild, were also anxious to have accurate information to encourage welfare and health reforms. When the Liberal government shelved even their very limited bill for women's suffrage the plan to boycott the census developed, but it never had the support of the more moderate campaigners.

Jill explained that Manchester had been the biggest centre for women evading the census outside London, but most of the suffragists in north Lancashire filled in their forms. Perhaps more would have tried evading the census if they had had more financial independence but there was the threat of a hefty fine and maybe repercussions from their, or their husbands', employers.

In the end both sides claimed victory - the suffragettes got a lot of useful publicity, but the government believed that the statistics they had gathered were reliable because the number of evaders was so small. The outbreak of the First World War prevented the data being fully evaluated but did lead to women being given the vote.

Alice Lock

***VANISHING FOR THE VOTE : SUFFRAGE, CITIZENSHIP AND THE BATTLE FOR THE CENSUS***

by Jill Liddington. Paperback. ISBN 978-0-7190-8749-3 January 2014. 304pp. 50 illustr. Gazetteer of suffrage campaigners. Price: £16.99 Manchester University Press [www.manchesteruniversitypress.co.uk](http://www.manchesteruniversitypress.co.uk)

=====

**HOT OFF THE PRESS!** On Thursday, January 21st, 2016, three days after the Portico Library lecture reported above, the 'i' newspaper announced that **EMMELINE PANKHURST** had been elected in a public ballot as the subject for the projected WoManchester statue. Six women formed the shortlist; 5,301 people cast votes; 56% chose Mrs. Pankhurst. At present, out of 17 statues in the city, only one is of a woman.....namely Queen Victoria! The stated cost of the project is £200,000, the total sum to be raised privately.

Mrs. Pankhurst was born in 1858 in Moss Side. She founded, in 1903, in her later Chorlton-on-Medlock home, the WSPU (Women's Social and Political Union). Her Chorlton home, in Nelson Street, is now the Pankhurst Centre, hosting women's activities and presenting a small museum and heritage centre. (M13 9WP)

From Jill Liddington's Gazetteer of how organisers of all the women's associations fighting for suffrage actually registered in the 1911 census, we find that Emmeline, and her friend Ada Wright, were recorded as 'evaders' by the Registrar. Eight women, strong supporters of suffrage organisations, are named in the Gazetteer section entitled **Lancashire Cotton Towns**. Edith Rigby (wife of a physician and surgeon) whose address was 28, Winckley Square, **Preston**, and who belonged to the WSPU, was named as an 'evader'. Margaret Farrington of **Bolton** is listed as 'absent, evading?'. The remaining six were Sarah and Marjory Lees of **Oldham**; Ada Chew of **Rochdale**, Sarah Reddish of **Bolton**, Selina Cooper of **Nelson**, and Lily Waring of Penwortham House, near **Preston**. All complied. Margaret Edwards



Photo: Historic England

## 2016 LISTING OF A MANCHESTER FORMER WAREHOUSE

The former warehouse standing at 58, Richmond Street, Manchester M1 3WB, was Listed Grade II by Historic England on January 19th, 2016. The List Entry No. is 1431770.

The building is a complete reinforced-concrete manufactory, carrying the date 1911, and was designed by T.E. Smith and Son of Bolton, with engineers L.G. Mouchel and partners. Grounds given for Listing are: technical innovation, design interest (it has a raked and glazed rear elevation which maximises light without affecting adjacent properties), age and rarity (it is a rare example of a complete surviving pre-1914 reinforced-concrete frame in this region and also nationally) and has group value, contributing (with the brick textile workshop opposite - NHLE 1270835) to the urban environment of the industrial city. The whole Listing makes fascinating reading and interested members can access a photograph of the façade via

<https://mobile.twitter.com/HistoricEngland/status/689824898982670336/photo/1>

The first part of the link above the photograph [bit.ly/1Ph1zWQ](http://bit.ly/1Ph1zWQ) gives access to the Listing text.  
Margaret Edwards

=====

## VERNACULAR ARCHITECTURE News and Notices from Kevin Illingworth

We regret to record the death, on October 9th, 2015, at the age of 86, of **Dr Ronald William Brunskill, O.B.E.** Ron was born at Lowton and was a pupil at Bury High School. He was a kindly and well-liked man whose impact on others was considerable and whose contribution to the study of vernacular architecture was immeasurable. LLHF and many local and learned societies have lost a good friend. In addition to the national newspapers, the website of the Cumbria Vernacular Buildings Group carried a short obituary; and a 2-page obituary can be found in the recent CVBG newsletter. K.E. & M.E.

=====

**Monday, March 14th, 2016:** 'Lakeland Architecture through the Centuries'. A talk by Andrew Lowe to Kirkby Lonsdale Civic Society, at Lunesdale Hall, New Road, Kirkby Lonsdale, at 7.30pm.

**Wednesday, April 20th, 2016:** 'Lakeland's Old Crafts and Industries'. A talk by Andrew Lowe to Lancaster Civic Society at the Friends Meeting House, Meeting House Lane, at 7.30pm. Contact – Winnie Clark 01524 33411.

**Friday 22nd April, 2016:** 'Ships' Timbers? Their use in Vernacular Buildings'. A talk by David Cant at Pendle Heritage Centre, Colne Road, Barrowford, at 7.30pm. Contact 01282 677150.

**Tuesday, May 10th, 2016:** A vernacular walkabout in Cartmel village, led by Dan Elsworth. 1.30 – 4.30pm. A Cumbria Vernacular Buildings Group event. Members only, but you can join on the day (£10). No meeting point yet, but for more details of the group's events and contacts visit website. [www.cvbg.co.uk](http://www.cvbg.co.uk)

**Tuesday 17th May, 2016:** 'Traditional Farmhouses in North-east Lancashire, Craven, and Bowland areas'. A talk by Kevin Illingworth to Earby and District Local History Society, at New Road Community Centre, New Road, Earby, at 7.30pm. Non-members £1.50.

## SOUTH MANCHESTER U3A HISTORY GROUP

On Thursday, January 14th, 2016, the Group was party to a significant event: Mrs. Angela Bogg, née Barratt, had agreed to give a short introduction, then to present two of fifteen long tapes, now digitised, of interviews which she had had with **L.S. Lowry** when she was in her twenties. The significance lies in the fact that this is a private unpublished archive and the tapes had not been heard for over forty years. Angela's career in university administration began at Salford University, near to the City Art Gallery where displays of Lowry's paintings were held from time to time. Attracted to the artist's work, through mutual contacts at the university Angela was introduced to Lowry. The two became friendly acquaintances, from which developed the recording programme, which was centred in Lowry's home in Mottram. Angela was keen to know how his work had begun and broadened; and her thorough research allowed her to conduct the 'interviews' on a secure basis. That, and her obvious sincerity and total freedom from materialistic considerations, allowed the two to share a deep trust; and listeners found themselves in the presence of two people sharing pleasant and absorbing conversations.

The recordings reveal that Lowry was a sensitive, even gentle, man - though not at the cost of subduing his more widely reported frankness and bluntness. When Angela was probing his choice of locations for his paintings, she mentioned he had visited the Cotswolds (implying surprise that he did not paint there) - but before she could get any further, Lowry blurted out, "I couldn't stand the Cotswolds!". Other discussions brought out his musings about politics and his cares and worries about ordinary people and their struggles.

Lowry believed that it was the people who made places what they were; and when those people were no longer there (for instance, Salford's little narrow streets and their inhabitants disappeared for the sake of development) he felt the loss. Time moves all of us on, of course; and we shared in the marking of the passing of time in Lowry's home; for as we listened to him and Angela talking we heard the lovely different chimings of some of the many clocks which he had in his home life. In due course we, too, had to move on; but what a lot of pleasure and interest and mulling the afternoon had brought us!

Margaret Edwards.

---

## LIVERPOOL HISTORICAL SOCIETY 2016

JAN	No meeting – Winter break	
FEB 21	Bootle Through Time:	Hugh Hollinghurst
MAR 20	Liverpool Botanic Gardens, 1802 – 2016:	Stephen Lyus
APR 17	The Japanese Consul :	Steve Smith
MAY 15	The History of Abercromby Square:	Dr Chris Williamson
JUN 19	Calderstones to Cunard, A History Walk:	Richard MacDonald
SEP 18	Tom Murphy Sculptures:	Tom Murphy
OCT 16	The History of Speke Airport:	Dr Tony Gilbertson
NOV 20	Shedding a Little Light on Liverpool:	Austin Varney
DEC 11	Images of Liverpool	Colin Wilkins

With the exception of May & June (see above) all meetings will take place in the Grace Room, 1st Floor, Hope at Everton, Shaw Street, the former St Francis Xavier College building. All meetings start at 2pm (doors open 1.30pm).

---

This is the 8th year of **LANCASHIRE'S LGBT HISTORY MONTH (February)**. Events held tie in with the national LGBT History Month campaign; the 2016 focus is Religion, Beliefs and Philosophy. In Lancashire, events involving talks, live music and sometimes film and refreshments, are arranged as follows, incl. contacts:

St. Anne's	Mon. Feb. 1: 5 - 7pm	Pavilion Café, Ashton Gardens;	<a href="mailto:andrew.noble@lancashire.pnn.police.uk">andrew.noble@lancashire.pnn.police.uk</a>
Lancaster	Wed. Feb. 10: 6 - 8pm	City Library, Market Square;	<a href="mailto:anna.haywood@lancashire.gov.uk">anna.haywood@lancashire.gov.uk</a>
Preston	Thur. Feb. 16: 7 - 9pm	Jalgos Sports & Social Club, Rose Street: free screening of 'Brother Outsider' - The Life of Bayard Rustin;	<a href="mailto:clinton@prestonblackhistorygroup.org.uk">clinton@prestonblackhistorygroup.org.uk</a>
Preston	Sat. Feb. 20: 1.30-4.30pm	The Harris, Market Square.	<a href="mailto:susan.ashworth2@lancashire.gov.uk">susan.ashworth2@lancashire.gov.uk</a>