



RETTENDON & BATTLESBRIDGE NEWSLETTER ★ JUNE 2024

Financed directly by residents and businesses in the area, and with grant from the Parish Council. Issue number 427
Prepared & distributed by over 30 volunteers within the parish. Printed by Solopress, 9 Stock Rd, SS2 5QF
Please note the views contained within are offered by individuals/organisations privately and not in conjunction with the compiler or the Rettendon and Battlesbridge Newsletter organisation.

Contributions for next Newsletter to be with RetBatNews@gmail.com, by 18th of the month

Ray and Dave's Country Music Club

SPINNING WHEEL

Rettendon Village Hall, CM3 8DP

(Opposite school)

Saturday, 1st June, 2024

Doors Open 7:00pm - 11pm

No bar - BYOD

Tea/Coffee and FOOD available

Come along for a great night of live music for dancing,
or just to listen

Contact: Ray 01245 472386 / 07791434118

Or Dave 01245 225963



Rettendon Memorial Hall

D-Day Afternoon Tea

Saturday, 8th June, 2pm - 5pm

Provided FREE by the Rettendon
Memorial Hall Management
Committee

Entertainment from members of the
"Raise Your Voice" community choir
(our very own "Andrews Sisters")

All Welcome

War-time photographs and memorabilia will
be on show.

BELVEDERE JAZZ & MUSIC SUPPER CLUB

Top International & UK Jazz Artists and Bands



**Tad
Newton
Jazz
Friends**

A great Swinging mainstream band
featuring 30's, 40's & 50's tunes.

**La
Bouche
Manouche**

Vintage jazz
band featuring Django Reinhardt
gypsy jazz style hit tunes from the
Great American Songbook.



19th June

Rettendon Lodge Events, Burnham Rd, Battlesbridge SS11 7QT
Admission £19.50 - Newcomers most welcome!

**A twice monthly all dining club opening at 6:15pm
with meals from £14.50 ~ Show 7:45pm - 10:45pm**

Reservations: Email :belvederejazz@gmail.com ~ Tel: 07850 607075



CHANGE OF VENUE DUE TO FLY TIPPING ON THE BELL FIELD

**New Venue - Nine Acres,
Marks Lane, CM3 8HF**

Thursday 6th June 2024 from 6.30 to 10pm to

Commemorate the 80th Anniversary of D Day

Live 40's Tribute Artist
Nostalgia Film Shows
Reading of the Tribute

Lighting of the Beacon and the Lamp of Peace

Fish & Chips and Burgers
Raffle

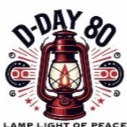
Bring your own drink and chairs

Tickets - £5 Adults

Accompanied Children under 12yrs Free

RSVP by Monday 27th May, as tickets are
restricted due to smaller venue

For tickets please contact: pat2258@aol.com -
07733362373 or denisefleming2011@gmail.com



In aid of

Cancer Research

At Rettendon Memorial Hall CM3 8DP

15th June 2024

Country music plus 50s/60s

With

Brian Mann

Buffet, teas & coffee included.

Tickets £10

No bar bring your own drink

Donations for a raffle welcome.

Doors open 7pm to 11pm

SUMMER SHOW

Planning meeting - Open to all
18th June, 7:30pm

Rettendon Memorial Hall, CM3 8DP
Come and join us and find out about the
fabulous summer show.

Please help with: stewarding, teas, stall
holding, help setting up/ dismantling.

Even just for half an hour

Contact: Barbara Wright on 01245
321554, email: RetHSsec@gmail.com

Rettendon Horticultural Society Coach Trip Chelworth Open Gardens

Sunday, 30th June

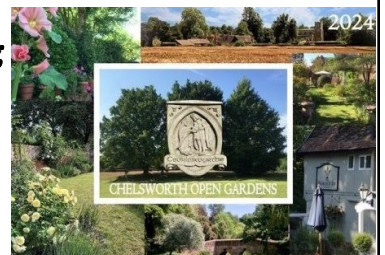
20+ Gardens Open;

Refreshments;
Specialist Stalls.

Cost £25 per person,
including entry (deposit £15)

Non-Members welcome

To book a place please call **Jean Pietsch** on 01268 763183
Coach pick-up time 9:30am at The Bell and Village bus stop.

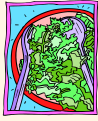


Community Hub

Rettendon Memorial Village Hall,
Wednesdays from 12 until 2pm



Becoming very popular, so may move to the main hall.
Salad, cakes, tea, coffee and other delicacies, all provided free of charge courtesy of the Hall Committee.
All residents, friends and family welcomed.



Bring your own, or see what is on offer.

Need more information or maybe transport?

Please contact Hazel Dale-Evans 01245 401538 or the secretary, Barbara Wright 01245 321554, or email RettendonMemorialHall@gmail.com



80th D-Day Anniversary Cinema
South Hanningfield Village Hall,
CM3 8HL



Saturday, 8th June from 11.30am

Showing "The Great Escaper" which is based on a true story about a war veteran who escaped from his care home to attend the 70th anniversary of the D-Day landings at Normandy starring Michael Caine and Glenda Jackson.

Suggested donations of £3 per person are welcome.

Event contact is Clive who can be contacted on 07891 653238 or vallisc@aol.com

A King's Birthday Afternoon Tea Party South
Hanningfield Village Hall
CM3 8HL



on Saturday, 15th June from 2pm.

Tickets are £20 per person and a donation will be made to a local cancer charity.

There will be a variety of sandwiches, cakes, scones and tea with wonderful company for a great cause. Dietary requirements catered for.

To book, call Emma on 07961 963914.

Battlesbridge Free Church Concert Saturday, 13th July - 7pm

The "Raise your Voice" Community Choir will be performing a concert

at Battlesbridge Free Church, SS11 7RE .

Doors open at 7 pm for a 7.30 pm start.

Entry free but donations towards the upkeep and maintenance of the Church will be appreciated.

Refreshments will be served during the interval.

Come along and listen to those familiar or not so familiar songs; there will be opportunities to join in with the singing.

Come and have some fun!

Thank you from Battlesbridge Free Church

who would like to thank the 44 of you who attended the Quiz. You seemed to enjoy yourselves, and the church rang to laughter and merriment. It made a change for the Rettendon Quiz mistress to actually be able to take part in a team without knowing all the answers! The event raised a remarkable £321 to help keep the Church going.

On that note we would like to also mention the Coffee Morning Plant Sale, which managed to raise a staggering £882. We thank all those made this possible, especially those who contributed plants, gifts, raffle prizes and cakes.

RETTENDON SUMMER SHOW

SATURDAY, 13th JULY ★ 1- 5 pm

LIVE BAND & ENTERTAINMENT | LICENSED BAR
HORTICULTURAL SHOW | TRADITIONAL STALLS
BOUNCY CASTLES | FACE PAINTING
BBQ | SUMMER RAFFLE

Show entries to be in before 10:30am

RETTENDON CRICKET FIELD,
AND MEMORIAL HALL
CM3 SDP

IN ASSOCIATION WITH RETTENDON HORTICULTURAL SOCIETY,
FRIENDS OF RETTENDON SCHOOL & RETTENDON CRICKET CLUB
(schedules for show available from
<https://e-voice.org.uk/rethortsoc/assets/documents/summerschedule24>)

Rettendon Horticultural Society

At last we have had some decent weather although it feels like Winter does not want to let go. However it's now safe to get tender plants out and think about Summer.

Our plant sale went very well. Lots of people buying plants and enjoying a social morning. Money raised will go towards financing our Summer Show which will take place on the 13th July on the Rettendon Cricket Club field. As always any help setting up and clearing away would be most appreciated.

There are still some places available for our coach outing to Chelsworth on the 30th June (see separate ad for details). You don't have to be a member to come along.

The school gardening club is in full swing and the children have all sown a sunflower seed with the hope of being able to bring their growing plant to the Summer Show. There are plenty of classes to enter as you will have seen from the schedule that came out with last months newsletter. It's really easy to exhibit and there is always plenty of help available if you are not sure how to go about it.

We have garden judging on Sunday 7th July so if you would like to show your garden off at its best why not enter. Details of the different classes are in the schedule.

John Bruty, Chairperson

OPEN MEETING - TUESDAY 18th JUNE - 7:30pm
Rettendon Memorial Hall, CM3 8DP

This is open to all and we would like as many people to come as possible. We need help to hold this event, but if you don't know what it is all about please come and we will tell you. Friends of Rettendon School (FRS) and the Cricket Club are involved, as well as the churches and local businesses. ALL WELCOME.

Schedules: see website: <https://e-voice.org.uk/rethortsoc/assets/documents/summerschedule24>

Or for a paper copy get in touch with the secretary,
Barbara Wright, email: RetHSsec@gmail.com

Website: <https://e-voice.org.uk/rethortsoc/>

D-Day 80 (<https://dday80.campaign.gov.uk/>)



In 2024 the UK will commemorate the 80th anniversary of the Normandy Landings on 6 June 1944 with a series of major commemorations and events across the UK and in France.

Also known as D-Day, the historic operation saw the Allied Forces mount a large-scale invasion of Nazi-occupied France that ultimately tipped the course of the Second World War in the Allies' favour. International collaboration was crucial to the allied victory. While most of the personnel that landed in Normandy on D-Day were from the UK, the United States, and Canada, a significant number from

Australia, Belgium, Czechoslovakia, Denmark, France, Greece, the Netherlands, New Zealand, Norway, and Poland also took part in the Normandy Campaign.

About D-Day

Unprecedented coordination between Allied nations, and the intensive planning of engineers, meteorologists, logisticians and countless more, led to a force from 13 countries approaching Normandy in a 5000-vessel armada.

In the early hours of D-Day, 24,000 paratroopers and glider-borne troops landed behind German lines to provide tactical support. Massive naval and aerial bombardments attempted to suppress the German defences and weaponry. Then a ground force of more than 130,000 troops came ashore on five beaches across a 50-mile stretch of Normandy coast, with the first waves often facing intact defences. By the end of D-Day there had been 10,000 allied casualties. Yet this was only the beginning. The ensuing Battle of Normandy was to last into August and cost

tens of thousands of lives as it defeated and repulsed the occupying German forces eastwards. It was a decisive success for the Allies and paved the way for the liberation of much of north west Europe.

(taken from <https://www.britishlegion.org.uk/get-involved/remembrance/remembrance-events/d-day>)

(Photographs Courtesy of The National WWII Museum)



D-Day memories

As we all know June 6th this year marks the 80th Anniversary of the D-Day Landings.

What was life like in Rettendon as seen by a young boy in the summer of 1944?

In June, I had two months left at Rettendon School before going to Wickford senior school. Not knowing what it was all leading up to at the time, there was a lot of troop movements passing through, a convoy would take anything up to an hour to pass through Rettendon heading for the ports.

The big thing when the convoys stopped for a rest, was all the boys in the village would gather round and ask the soldiers for buttons, badges or any part of equipment, to get a hat would be a real prize.

The Army were billeted in Rettendon during the war, so this gave the young boys plenty to occupy themselves with, one pastime would be to sit on the school wall and watch the army lorries fill up with petrol from the pump taken over by them on the forecourt of Oakdene stores owned at the time by Mrs. Manders.

I didn't take long to round up the boys in the village for a game of soldiers. We would dress up in our bits of uniform that we had collected and swapped with each other, some of us would mount guard at the school gate, others would be on guard at the gateway to No 1 Meadow, now the entrance to Meadow Road.

There would be a runner between the guards to report on those attacking, it all ended up very friendly. Another game I would play was with my friend at the time, and for a long time after, the late Tony Andrews: he had a collection of Dinky toys and we spent hours playing soldiers again.

In the Village Hall would be film shows for the soldiers, the people in the village would get an invitation, this gave us something to look forward to.

During the war my mother was a collector for the Red Cross, every Saturday morning I would set out with my brother and go round all the houses with the collecting box.

Both my parents, like a lot more people in the village, helped with war work by doing small assembly work. The work had to be collected from Bevan Bra's factory in South Hanningfield Road, myself in turn with my brother and elder sister would walk to the factory to deliver and collect more work.

1944 was the year the 1st. Rettendon Scout troop had a photo taken, many of you may have seen it. The photo was taken by the steps that now lead up to No 17 Crouch View.

We had no electricity in Rettendon so on Sundays I would pump the church organ: for this I was paid £1.00 per quarter, for weddings and funerals I was paid an extra 2/6d.

As you can see, in the summer of '44, there were plenty of things to occupy a young boy. No television and never bored.

Raymond Spearman (Chas)

(Previously printed in the Rettendon Newsletter in 1984)

WOODHAM FEST

LINE UP 2024: 21ST-23RD JUNE

Friday Night 7:20pm - 9:30pm at The Bell Pub, Woodham Ferrers

Woodham Fest Quiz: The War Edition

As part of the Woodham Fest local history weekend the project team are organising a quiz at the Bell in Woodham Ferrers on Friday 21st June at 7:30pm. The winning team will receive a guided tour of Edwin's Hall. Some rounds will have a WW2 theme in keeping with the rest of the event

Teams of up to six people are welcome to enter at a cost of £3.00 per person. Any profit from this event will go to the Royal British Legion. One stipulation! The Bell are giving their back room free for the event, so it is a requirement of everyone present that they purchase their drinks from the bar at the Bell.

To book places contact Mike Fogg at mikefogg@btinternet.com or call on 01245-328337

Saturday South Woodham Library

10am - 1pm Esther the Jeep special guest appearance

11am Chelmsford Museum Presents: Eddie's War
An interactive talk for all the family from the museum learning team

Essex Society for Family History: Introduction to researching your family history
Online research skills. Family history pack to take home. Bring along your old family military photographs.

South Woodham Ferrers Presents: Family Activity Fun
An opportunity to get hands on with a war themed craft activity and explore the library

South Woodham Ferrers Local History Society Presents: Woodham at War
This visual exhibition charts life in Woodham during the two great wars.
Open 22nd June - 5th July during library opening hours.

Saturday St. Mary's Church, Woodham Ferrers

2pm Costumed Home Guard Talk: Local historian Neil Wiffen brings his popular costumed Home Guard to the historic surroundings of St. Mary's Church

3pm War Memorial Exhibition Launch: The first chance to see this long awaited exhibition about local heroes and life during WWI and WWII.

Saturday The Bell Pub, Woodham Ferrers

4pm - 6pm Some Kind of Blue: The War Edition
Popular modern jazz band Kind of Blue present a one of a kind set featuring war era music.

Sunday St. Mary's Church, Woodham Ferrers

11:30am War themed Family Church Service

3pm - 4pm Live performance by Just Us: costumed performance styled on the Andrews Sisters
Outside on the lawn of at St. Mary's.

The Vintage Tea Party
Expect bunting, tea, homemade cakes galore, with vintage music and traditional outdoor games. Outside on the lawn at St Mary's! Costumes and picnic baskets encouraged!

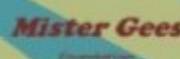
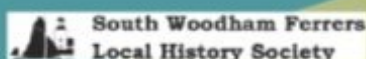
Sally's Cottage Garden Stall: Find some gems with your garden, nature lover & plant aficionado.

War memorial Exhibition: Our fantastic exhibition will be open all afternoon in the church, with exhibition creators Sam and Steve on hand to help you

The field at the Bell Pub, Woodham Ferrers

Essex Historic Military Vehicle Association: Take a moment to enjoy an incredible display of period vehicles presented by the Essex HMVA on the field at the Bell.

PLEASE EMAIL QUERIES TO: STMARYSHH@GMAIL.COM



Information and pictures taken from the Woodham Fest Posters

Annual Chairman's Report from Rettendon Parish Council - 2024

This is a general overview of what we as a Parish Council have been doing over the past 12 months.

I'd like to thank all 8 of my fellow Parish Councillors who were elected this last year, we are getting to know and work with one another. They all deserve special mention and thanks because they do the job voluntarily and always have this parish's best interest at the heart of what they try and achieve.

Over the past 12 months, the following items are just a few of the things the Parish Council, with the help of you, as parishioners or trustees have achieved!

I'll start with the Bell Fields. The PC and trustees have created a play area for the children of the parish as well as an adult fitness course and you will have seen that the trustees are arranging for more play equipment and picnic tables there too.

Sonters Down has been a much neglected area of the Parish and the 'Friends of Sonters Down' was established this year with the help of a couple of Councillors, to act in an advisory capacity. Over the next few weeks and months we will see that progress to benefit that community.

Remembrance Sunday was particularly memorable for me as Chair of the Council, it was my pleasure to ask Fran from the Living Memorial Centre to present the Parish wreath on behalf of the community. She thankfully accepted.

The Village Memorial Hall is a focal point of the village and the volunteers continued to support the community in providing the warm hub throughout the cold winter months and provided hot soup and bread in a warm friendly environment. Several of the Parish Councillors were able to join in attendance. This will be continued through the warmer months as a Coffee and Cake session by popular demand and some of us Councillors will be there attending these sessions to listen to anyone who wants to chat or bring something to our attention or need help with anything. In addition to this:-

I'm pleased to say that the management of the Memorial Hall has graciously allowed the Parish Council to have a base back there once again for PC mail and files to be centrally located once again. There will be a post box outside and if you have anything to suggest or want to discuss, drop us a note and we'll contact you. We are very appreciative of the Hall Committee for allowing this to happen.

The bus shelters have been cleaned and decorated throughout the past year and the Committee continues to do that job. We are aware that there are a couple in need of repair. This is in the process of being done. The vehicle damaged bus shelter in Battlesbridge is awaiting an insurance assessor to determine the extent of damage and then approve the repairs. The other one in Woodham Road will be dealt with once the weather is consistently warmer so that the bases can be fixed. We are also aware of the graffiti that needs to be over painted on some.

Traffic speeding through the main road continues to be a problem at certain times of the day and certain parts of the village, we are in consultation with our Ward Councillors who are meeting with Highways to pin point those areas that are speeding hot spots.

Earlier in the year, the Parish Council agreed to support the 20mph speed limit programme in residential built-up areas and are committed to making these heavily populated areas safe for all, particularly our young children.

The area of flooding emanating from South Hanningfield Road has been partially cleared and the rest is scheduled to be resolved before the autumn.

We continue to provide grants for local events and causes such as the recent Royal Coronation and Jubilee events and have done the same for the upcoming D-Day celebrations. We also are proud to support our local newsletter. This is a great method of getting information out to the community, this in turn enables the community to support upcoming events.

The Horticultural Show is another one of the major events of the village. We as a parish council offer our support by helping out on the day in any way possible. It was my pleasure to man the BBQ stall last year and I met many of you for the first time. I look forward to meeting more of you this year too.

We are very pleased with the relationship with our Ward Councillors Paul Clark and Steve Davis. We regularly keep in contact and are advised about what's going on at City level that may affect our community. They attend our monthly meeting and always inform us about issues that will affect our community.

The Parish Council chairmen's board, which is on the wall in the committee room, has been updated to include all chairmen up to, and including, the present chair.

Finally, I would like to let you all know that the City Council is conducting a Local Plan Review. The Local Plan shapes future growth and development across Chelmsford City Council's area. It sets out a positive vision, identifies where and how new development should take place in the future as well as areas for protection. They adopted their current Local Plan in May 2020. They need to review the plan at least every five years to make sure it remains up to date and meets the changing needs for development growth to 2041.

For further information such as an online exhibition and frequently asked questions: www.chelmsford.gov.uk/lp-review

The consultation is open for your comments from **10am on Wednesday 8 May 2024 to 4pm on Wednesday 19 June 2024.**

- With the above in mind, there is a planning application that has been proposed by the City as follows:
- **Comments for Planning Application 23/01930/OUT**
- Address Land North And East Of Junction 17 Of The A12 Chelmsford Essex
- Proposal: Outline application with all matters reserved for the commercial development of up to 120,000sqm of logistics/warehousing development (Use class B8 with ancillary offices) along with servicing and infrastructure including new site accesses, internal roads and footpaths, landscaping including earthworks to create development platforms and bunds, drainage features and other associated works.

The parish councillors were not notified of this application and I have contacted the City Council now and lodged our disgust at their actions and voiced our opinion on the application.

If you wish to do likewise or just want to see what it's about, log on to Chelmsford City Council planning page and insert the **Application 23/01930/OUT** number. You will have access to all you need to lodge your comments.

Pilots Youth Club
Every Wednesday
6pm onwards

Battlesbridge Free Church Hall, SS11 7RE
For details contact
Pam Matthews on 07532 354337



Rettendon Parish Council

On the radar of the Parish Council are items such as the neighbourhood plan, Sonters Down, neighbourhood watch, the inevitable potholes and faulty lights, planning and solar farms.

But if you want your say then come to one of the meetings on the last Tuesday in the month at 7:30pm - generally at Rettendon Memorial Hall, CM3 8DP.

The Parish Council pay for S-Type to patrol Rettendon to deter crime. Their number is 01245 931598.

Website: <https://www.rettendonpc.org.uk/> or

Facebook: <https://www.facebook.com/rettendonparishcouncil/>

Rettendon Horticultural Society would like to say **thank you** to all who supported them at their recent plant sale. We raised over £800 which will help us pay for the Summer Show Marquee - our biggest expense of the year, but one we are loath to give up. Our thanks to our very special plant suppliers - without you I doubt if the show could go ahead. We can look forward to planning the show and hopefully getting a few extra supporters to help us.
Yours sincerely, Barbara Wright, Secretary.

Rettendon Memorial Hall

The taster session for the "*Strollercise*" class was well attended with both male and female "movers". We are hopeful that a slot can be arranged for a more permanent class. Details will be advertised in the newsletter when finalised. Probable start date will be in September.

Continuing with our groups and societies, as well as the Community Hub.

Bowls continues on Mondays from 7pm till 9pm.

Community Hub on Wednesdays with **Knit and Natter** afterwards on the 1st and 3rd Wednesday in the month. The Hub is proving its worth for Mental Health and Well Being for some of our community. Several people coming who cannot get out very well, and we offer transport for those who need it.

The glass class on a Wednesday is advertised in this edition, for those who have asked. Must admit it looks fun.

The **community herb bed** is in full season. Do come along and pick a few herbs to use. They are there for any resident. There are even recipes on how to use them. If you want to grow your own we can also provide information on how to take cuttings to grow them. No experience necessary, Rettendon Horticultural Society have shown the schoolchildren how to do it, so no excuses.

Maintenance is ongoing, with some painting in one of the back rooms to allow it to be used more efficiently. Everything else is being looked after as it should be.

Bookings and availability should be checked with the **Booking Clerk, Dianne Francombe. Phone her on 01245 400297.**

Hall Management Committee

Website: <https://e-voice.org.uk/rettendon-memorial-hall/>

Secretary email: RettendonMemorialHall@gmail.com

HAYES PARK - Newsletter Distribution

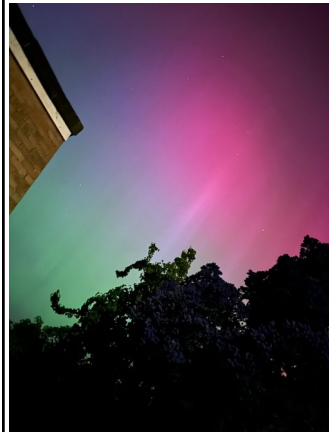
We are now looking for a few people to help out with distributing the newsletter within the park. There are only 10 drops a year, monthly, except for July/ August and December/January.

The homes to be covered are in Elm Way to club house, Waterfront, Howards Way, The Oaks and Palm Court.

Please contact **Barbara Wright** on **01245 321554** or email RetBatNews@gmail.com.

We thank those leaving our little band and wish them well wherever and whatever they have planned for the future.

Aurora Borealis over Rettendon



Taken by a resident on the Meadow Road estate a view of the Northern Lights.

These are not usually seen this far south, but a magnetic storm, caused by flares and coronal mass ejections from the sun, has brought them within view. This is thought to be the strongest it has been for 500 years, and is likely to happen again.

Views of the lights are restricted by light pollution,

so it helps to live where there are no road lights, and no city/town lights.

Picture by kind permission of resident. Article by Compiler.

If you missed it first time round there may be another chance. Listen to radio/tv weather for when.

ART CLUB

Battlesbridge Free Church Hall

Every Wednesday, 2 - 4pm

£2 per work table

tea/coffee and biscuits for £1

Contact:

Kate Hart on 07789 806119



Essex County Fire and Rescue Service

Essex Fire and Rescue are offering Safe & Well visits which are free and their advice ranges from Fire Safety, Home Security, Falls and Signposting Health and Wellbeing issues. Their advice and guidance is there, use it, it is free. Their phone number is 0300 303 0088.

You can see the details on line at <http://>

www.safety@essex-fire.gov.uk.

Email at home.safety@essex-fire.gov.uk

Rettendon Horticultural Society
Report on talk on Gardening the Globe.

It was fascinating to learn how Gertrude Jekyll, a renowned 19th century horticulturalist, inspired "cottage garden" planting at War Graves cemeteries. She produced a number of planting schemes, with hardy borders, and bright colours to give good effect.

There were also the challenges of maintaining gardens in adverse climates, from Iraq to Belgium, France to Egypt, with sustainability a high requirement.

Just a shame there were not more people to enjoy such a passionate speaker, Neil Richardson.

Barbara Wright, secretary.

Stained Glass Workshops

Regular stained and fused glass workshops are being held every Wednesday evening from 6.00 to 8.30 pm in the committee room at Rettendon Village Hall. The class is run by experienced glass artist, Caroline Weidman, who moved from her studio at Barleylands Craft Village in Billericay to Glass Studio Supplies in Tabrums Farm, near South Woodham Ferrers, last year.

The evening sessions in the Village Hall are friendly and fun and open to adults of all backgrounds and abilities.



Some previous experience of working with glass before attending is essential, however, as participants have the opportunity to work on their own

projects at their own pace, with mentoring and support from both Caroline and each other when needed.

Glass cutting skills and beginners courses in a variety of glassmaking techniques, including glass fusing, traditional leading, copper foiling and lampwork sculpture and beadmaking, are available from the glass studio and can be booked through Glass Studio Supplies. There is a large, well stocked fused glass and supplies shop onsite, with friendly and helpful staff always available.

Caroline has worked on a number of stained glass projects over the years, designing, making and restoring stained glass and leaded light windows. She particularly enjoys teaching glass making skills, creating, lampwork sculpture, Christmas baubles and jewellery making.

Contact details

Please phone **Caroline on 07792 475085** if you are interested in attending the Wednesday evening class in the Village Hall.

Please **telephone 07877 600383** or visit the Glass Studio Supplies website glasstudiosupplies.co.uk for information about daytime and beginners courses.



Battlesbridge Free Church

How wonderful and exuberant has been this spring. The abundant rainfall earlier in the year has produced a more wonderful explosion of blossom than I can ever remember. Even the daisies and buttercups and wildflowers on the verges have excelled themselves. The hymn which our children at school and Sunday school used to sing lustily, "All things bright and beautiful" sums it all up beautifully. How much Christian ethic is still in evidence in our schools today? Who made the decision that school assemblies should no longer be a small act of Christian worship? The basis of our children's moral behaviours was of the teachings and life of Jesus Christ.

There has been a great influx of people from many countries bringing with them their many religious beliefs. We are all so fortunate to not have laws which forbid freedom to follow personal beliefs. But whilst being tolerant in allowing each his own personal freedom we should allow our own children to be fully aware of their own Christian inheritance as well as being given an insight into other people's faith and beliefs.

Jesus Christ gave his life of forgiveness for people of all faiths. All peoples' personal lives will be under judgement at mortal death. Our loving God made provision to save us from this ending. Christ's life's teaching showed us how to live at peace with each other and his sacrificial death paid the penalty for those who would believe in his wonderful promise of forgiveness and everlasting, renewed life beyond the grave. Disbelieving does not change our options by one iota. God loves us all through life, whatever our beliefs, but he can only offer us his saving grace through the life, death and resurrection of our Lord, Jesus Christ. The choice is ours.

June Edwards



Little Darwin's Nursery

Another month flies by and the children have had lots of fun. Our Explorers have been planting their radishes and cucumber seeds, in the vegetable patch outside their room and they are starting to sprout. They enjoyed a picnic tea on the field, where they listened for bird sounds.



Our Innovators enjoyed a local walk through the village, to the church, where they were looking for wild flowers. They have also been reading The Very Hungry Caterpillar story and watching the real-life cycle of a caterpillar at nursery, we await the change to butterflies soon!



There has been lots of outdoor play, in the sun and when it has been raining and we look forward to the good weather, we hope will stay with us during June.

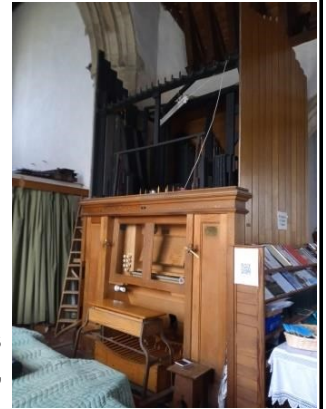
Jeanette Freeman-Smith, Administrator

ALL SAINTS'S CHURCH, RETTENDON

It's been an exciting time in All Saints church in May as the organ has been cleaned and repaired. It was last "fettled" in 1985, so was definitely overdue.

Since 1985 the roofing has been replaced, and I understand from the repairer that he found quite a bit of gravel inside!

To celebrate we will be planning an organ concert of some sort later in the year; it's still only in the planning stage, but watch this space for



details of when and how to attend.

We are also pleased to report that following our recent Annual meeting, the Parish church council now has 5 members, whereas last year there were initially only three. I am also delighted that Lyn Benson is joining me as churchwarden.

Friday coffee continues to flourish, so if you are free any Friday morning around 10, do pop in.

Gale Fogg, Churchwarden

The picture was taken by one of the bell ringers as we left the church. If anyone would like to join us please get in touch. We always need more ringers, and it is a good way to get exercise, mental stimulus and social interaction.





Battlesbridge and Rettendon Events (To publicise your event please contact the compiler)



| EVENT | DATE / DAY | TIME | VENUE | ORGANISATION |
|---|--|---------------------------------------|--|--------------------------------------|
| Parish Council AGM | Tuesday, 28 th May | 7:30pm | Rettendon Memorial Hall | Parish Council ⊗ |
| Spinning Wheel | Saturday, 1 st June | 7 – 11pm | Rettendon Memorial Hall | Ray & Dave's CMC |
| Tad Newton Jazz Friends | Wednesday, 5 th June | 6:15 – 10:45pm | Rettendon Lodge | Belvedere Jazz & Music Supper Club ★ |
| 80 D-Day | Thursday, 6 th June | 6 – 10pm | | Rettendon Common Residents |
| The Great Escaper | Saturday, 8 th June | 11:30am | | South Hanningfield Village Hall |
| D-Day Afternoon Tea | Saturday, 8 th June | 2 – 5pm | | Rettendon Memorial Hall |
| King's Birthday Afternoon Tea | Saturday, 15 th June | 2pm | | South Hanningfield Village Hall |
| Brian Mann | Saturday, 15 th June | 7 - 11pm | Rettendon Memorial Hall | Ray & Dave's CMC |
| Breakfast Club | Sunday, 16 th June | 9am | | Battlesbridge Antiques Centre ☿ |
| Summer Show Open Meeting | Tuesday 18 th June | 7:30pm | Rettendon Memorial Hall | Rettendon Hort. Soc. |
| La Bouche Manouche | Wednesday, 19 th June | 6:15 – 10:45pm | Rettendon Lodge | Belvedere Jazz & Music Supper Club ★ |
| Woodham Fest Quiz | Friday, 21 st June | 7:30 – 9:30pm | The Bell Pub, Woodham Ferrers | Woodham Fest |
| Woodham Fest: History and Music Festival | Saturday, 22 nd June & Sunday 23 rd June | Various times | Various: Woodham Ferrers | See Woodham Fest Poster & Diary ☿ |
| Chelsworth Open Gardens | Sunday, 30 th June | 9:30am | Rettendon Memorial Hall | Rettendon Hort. Soc. |
| REGULAR EVENTS | | | | |
| Church Sunday Services | Sundays | 11am / 11:15am | Battlesbridge Free / All Saints, Rettendon | |
| Parish Council Meeting | Last Tuesday in Month | 7:30pm | Rettendon Memorial Hall | Rettendon PC ⊗ |
| Bowls | Mondays | 7 - 9pm | Rettendon Memorial Hall | |
| Community Hub | Wednesdays | 12 – 2pm | Rettendon Memorial Hall | |
| Knit and Natter | 1 st & 3 rd Wednesdays | 2 – 4pm | Rettendon Memorial Hall | |
| Art group / Youth Group | Wednesdays | Art at 2pm / Youth at 6pm | Battlesbridge Free Church Hall | |
| Midweek Cricket Matches | Wednesdays | 6pm | Church Meadow | Rettendon Cricket Club ● |
| Walking Group | Thursdays | 10am / 7pm | Various | Sandie 01268 733259 |
| Coffee Morning | Fridays | 10am – 11am | All Saints Church, Rettendon | |
| Raise Your Voice Choir | Fridays | 7pm | Battlesbridge Free Church | Raise Your Voice Choir |
| Cricket Matches | Saturdays / Sundays | 12:30pm / 1pm | Church Meadow | Rettendon Cricket Club ● |
| Country and Western | 1 st Saturday in month | 7pm – 10pm | Rettendon Memorial Hall | Ray & Dave's CMC |
| DATES FOR YOUR DIARY | | | | |
| Longshot | Saturday, 6 th July | 7 – 11pm | Rettendon Memorial Hall | Ray & Dave's CMC |
| Garden Judging | Sunday, 7 th July | 2pm | Various | Rettendon Hort. Soc. |
| Chris Dean's Savoy Collection | Wednesday, 10 th July | 6:15 – 10:45 | Rettendon Lodge | Belvedere Jazz & Music Supper ★ |
| Summer Show | Saturday, 13 th July | 1 – 5pm | Hall & Church Meadow | Rettendon HS, FRS, RCC |
| Raise Your Voice choir | Saturday, 13 th July | 7pm | Battlesbridge Free Church | |
| Living Memorial Tour with tea | Thursday, 25 th July | 2pm | Rettendon Horticultural Society | |
| George Payling Jnr | Saturday, 3 rd August | 7 – 11pm | Rettendon Memorial Hall | Ray & Dave's CMC |
| Church Open Day | Monday, 26 th August | 10am – 3pm | All Saints' Church, Rettendon | |
| MOBILE LIBRARY – (every 3 weeks) https://libraries.essex.gov.uk/digital-content/our-mobile-and-home-library-services/mobile-libraries | | | | |
| South Hanningfield Village Hall / Salforal Close | Tuesday | 12:25pm to 12:55pm / 1:45pm to 2:15pm | 11 th Jun | |
| Goose Cottages | Friday | 9:40am to 10:10am | 7 th & 28 th June | |

⊗ Check website: <https://www.rettendonpc.org.uk/> or Facebook: <https://www.facebook.com/rettendonparishcouncil/>

★ <https://belvederejazz.co.uk/gigs/>

☿ <https://www.battlesbridge.com/events>

● <https://rettendon.play-cricket.com/home>

☿ for queries email: <mailto:StMarysHH@gmail.com>

PARISH COUNCIL contact details

- Katherine Kane, Parish Council Clerk
- rettendonparishcouncil@outlook.com 07811 254163
- Parish council website: <https://www.rettendonpc.org.uk/>
- Facebook: <https://www.facebook.com/rettendonparishcouncil/>

ESSEX HIGHWAYS - Report a problem

- Website: <https://www.essexhighways.org/transport-and-roads/tell-us/report-all-issues.aspx> Any risk to public safety, please call us immediately on 0345 603 7631 or if you have hearing problems use our text phone service on 0345 758 5592

CHELMSFORD CITY COUNCIL tel: 01245 606606

- Website: <https://www.chelmsford.gov.uk/>
- Planning search: <https://publicaccess.chelmsford.gov.uk/online-applications/search.do>

What kind of jokes does a chiropodist like? Corny jokes
What is green and white and bounces? A spring onion

Garden Notes

Thought I was winning and the grass grew again.
Finally found the flower beds - great cure for frustration.

Get close to your bit of this planet! Mrs. McGregor

Newsletter Contributions - email: RetBatNews@gmail.com

We encourage contributions from local individuals, societies or groups. Please send them ASAP via e-mail, as above, or phone 01245 321554. Funding contributions, cash or cheques (made out to RetBatNews), phone 01245 321554 for details, or post in 55, East Hanningfield Rd.

If you wish to receive this newsletter by email please contact RetBatNews@gmail.com or website: <https://e-voice.org.uk/retbatnews/>
Please note this newsletter is compiled from various entries and is not the work of any one person. The views expressed in this newsletter are those of the contributors and not necessarily those of the compiler, or of the Newsletter Organisation, though spelling and grammar may be corrected.