

Don't forget to look at our website! www.surreycommunity.info/ovra/



THE VILLAGE VOICE

THE NEWSLETTER OF ONSLOW VILLAGE RESIDENTS ASSOCIATION – ISSUE THIRTY FOUR AUTUMN 2013

Planning for the future

It's said that history has a tendency to repeat itself and just as we find ourselves in the midst of a housing crisis today, so it was in the years following the First World War. Then, under a scheme dubbed "Homes for Heroes," the Government pledged substantial subsidies to provide decent housing for a growing population.

In Helen Chapman Davies's booklet "The Story of Onslow Village",* she describes how Guildford was the first municipality to respond to this drive and as a result, the Stoughton and Guildford Park housing estates were built.

It was a former Town Clerk for Guildford, Ferdinand Smallpiece, who came up with the idea of a garden suburb for Guildford; a plan he'd often discussed with Lord Onslow. With the support of Guildford Corporation, a Public Utility Society was formed, to be known as Onslow Village Ltd, and 646 acres of land (shown on the map below enclosed by a solid line) were acquired from Lord Onslow at a fraction of the market value.

The plan was to build a self-contained community providing not only housing, but shops, schools and churches, recreation grounds and factories, woodlands and allotments – even a railway branch line and station. Early plans indicated 3,000 houses to accommodate between 10,000 and 15,000 people, which would have meant a substantial increase in the population of Guildford, estimated to be about 26,000 at the time. That grand vision was destined never to come to fruition.

The initial phase of building began at The Crossways in 1920, but the boom period after the First World War was all too brief and against a background of growing economic depression, the plans for the Village were scaled down. The construction of the Guildford and Godalming bypass, which opened in 1934 and divided the estate in two, finally put paid to any further plans to extend Onslow Village onto the Manor Farm site and

A little bit of history repeating

Now once again, there is a growing housing shortage and local authorities are under intense pressure to provide new homes. According to *The Financial Times* in September this year, the number of households in England will increase by 20% over the next two decades, creating massive demand for housing, but long-term projections based on the last census show that demand will far outstrip supply.

Houses are being built at a rate of about 100,000 per year – the lowest levels of peacetime housebuilding since the 1920s – which leaves a deficit of about 120,000 a year, according to a report by the Cambridge Centre for Housing and Planning Research and the Town and Country Planning Association. Two thirds of the new homes will be needed in the south.

Kate Henderson, chief executive of the TCPA, said, "We have a hopelessly inadequate supply of housing and a serious backlog, as well as chronic affordability problems. We urgently need a new vision for housing and the development of new communities... whether as part of urban regeneration or through new garden cities."

Brownfield or Green Belt?

With the pressure to build, comes the pressure to find sites on which to do so and there is growing concern that the Green Belts are under threat. The Campaign to Protect Rural England claims there is already a huge amount of land available for building, without having to stray in to Green Belt areas; according to its own research, there are enough suitable brownfield sites to accommodate nearly 1.5 million new homes, England's major housebuilders have enough land with planning permission to build more than 280,000 new homes, and that if the problem of long-term empty houses was addressed, it could provide housing for another 300,000 families.

CPRE argues that maintaining Green Belts helps the economy by promoting urban regeneration and keeping housing and



A view of the proposed area of development

(AGLV), remove a popular green space, add to the congestion on the local road network and put pressure on existing local services, such as schools, medical practices and dentists.

More information about the planned development and its possible impacts can be found on their website: www.savehogsback.co.uk and there is also a Government e-petition on the site which residents can sign if they wish.

Government protection?

Worried about Green Belt development, residents in Wonerish recently wrote to Nick Boles MP, Parliamentary Under-Secretary of State for Planning to express their concerns and his reply highlights the tensions that exist between housing needs, Local Planning Authorities (LPAs) and local communities.

He begins by stating that the Government attaches great importance to the Green Belt and that development or revision of boundaries within them should only be considered in exceptional circumstances, but then he strikes a note of caution: "We must also be honest that, as a nation, we have not provided sufficient housing for many years to meet growing household needs."

He goes on to say that the Government expects LPAs to be consistent with national planning policy when considering the need for housing, which means striking a balance

expand, Onslow Village Ltd accepted an offer to sell the land that is now the University of Surrey's Manor Park.

A press report in 1974 gave the number of houses in the Village to be around 600, with about a third still owned by Onslow Village Ltd. The society was dissolved in 1988 and its assets distributed amongst the remaining shareholders.

An interesting footnote concerns the land to the south of Onslow Village between the A31 and the Hog's Back trackway – originally intended to be part of the Village. Herbert Powell, who was Chairman of Onslow Village Ltd's Management Committee and had an abiding love of the countryside, persuaded the committee and shareholders that the land should be preserved from development. It was subsequently sold to Guildford Borough Council in 1930 to be enjoyed as a public open space in perpetuity.

business close to services and transport links, and their concern is that the Government's National Planning Policy Framework suggests that planning controls such as Green Belts are actually an impediment to economic growth.

Save Hog's Back campaign

The pressure on the Green Belt is evident right on our doorsteps, with the news that the University of Surrey plans to build a 2,000-home 'urban village' on land it owns at Blackwell and Manor Farms, which lie on the northern slopes of the Hog's Back adjacent to Onslow Village (indicated on the map by a broken line).

Local residents have started a campaign to object to these plans, under the name *Save Hog's Back*, their concerns being that the development would destroy the unspoilt panoramic rural views from the Hog's Back, ruin a designated area of outstanding natural beauty (AONB) and great landscape value

and historic environments, and doing so in conjunction with local communities. However the Government is concerned that recent decisions by LPAs and the Planning Inspectorate indicate that Green Belt has not always been given the protection that Ministers intend policy to provide.

In a Ministerial Statement of 1 July, the Government therefore reaffirmed the protections that apply in the Green Belt and set out that for housing and traveller sites, unmet need alone is unlikely to justify the very special circumstances necessary to permit such development in the Green Belt. Mr Boles ends by saying that the correspondent should be reassured that strong planning safeguards exist to prevent inappropriate development and encourages him to contribute his views during public consultation on the Local Plan and particular developments.

Let your voice be heard!

Guildford Borough Council are currently compiling a new Local Plan which will set out the vision for the borough and the approach to development between now and 2031. The aim is to find positive solutions for the growth needed, including the provision of enough jobs, new homes, improved transport and the creation of better local facilities.

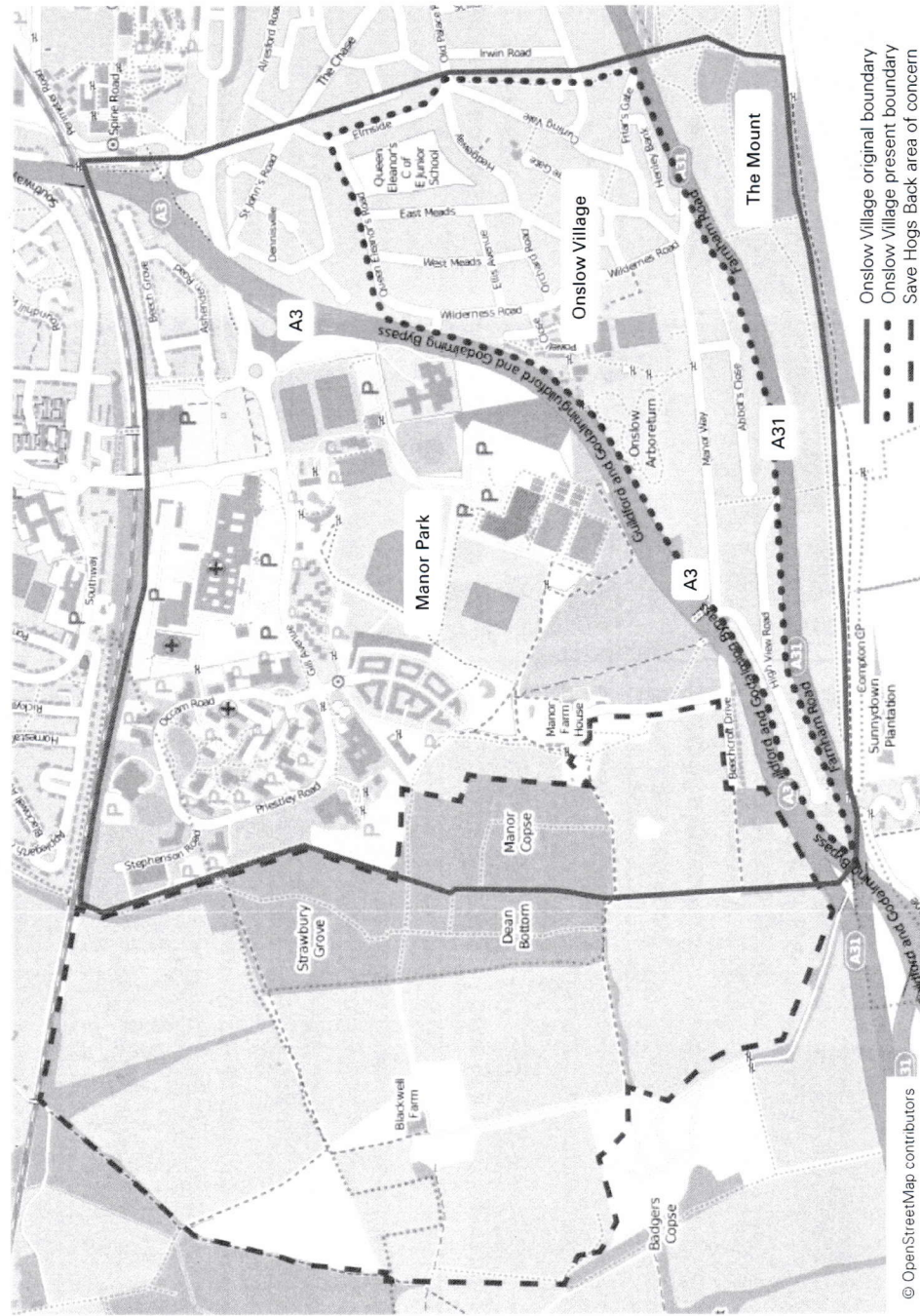
Consultation on the Issues and Options document began on 1st October and will continue until 5pm on Friday 29th November.

The Local Plan is your once-in-a-decade chance to say how you want Guildford and its villages to develop into the 2030s. Let your voice be heard – it really does count.

Find out more at <http://guildfordlocalplan.info/about/> or visit 25 Swan Lane in the Town Centre, which has been leased for 18 months as a communications hub and will be focusing on the Local Plan over the next few weeks.

Visit our website at www.surreycommunity.info/ovra/news/ which has information about how to submit your views about the Local Plan, including a link to the Guildford Residents Association's website. The GRA aims to bring together local residents' associations, parish councils and organisations such as CPRE and the Guildford Society. They have put together a suggested response document, which you can download and submit with a covering letter.

We urge all residents to find out for themselves about the Local Plan and to take this opportunity to let Guildford Borough Council know what they would like it to contain.



— Onslow Village original boundary
- - - Onslow Village present boundary
... Save Hogs Back area of concern

* We still have a few copies of Helen Chapman Davies's booklet for sale at £2 each. Please ring 07720 945430 for details.

Obituary for Maurice Bland 1932-2013

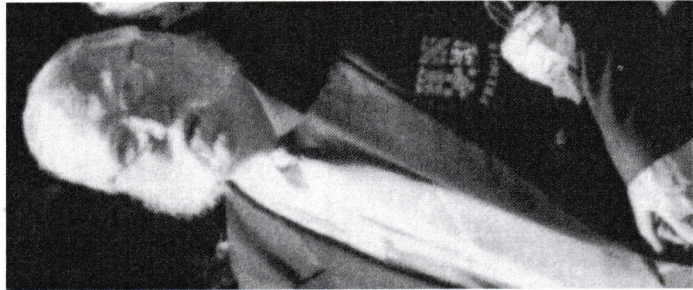
His wide circle of friends and acquaintances was saddened by the unexpected death of Maurice Bland who was prominent in Village life and its activities for nearly half a century.

A popular, genial and easily recognisable figure with his trademark moustache, Maurice served on many local committees over the years, including Queen Eleanor's School PTA, the Residents' Association, the Village Hall Management Committee and the Tennis Club.

At the time of his death, Maurice was President of OVLTC, having played there since the 1960s and having been, at various times, Chairman, Match Secretary and Committee member. In addition to tennis, Maurice had an impressive all-round sporting pedigree. He was a keen bowls player and numbered badminton, rugby and cycling among his other enthusiasms.

Participating at social events, on work parties and on committees, the many contributions Maurice made to Village life were significant as he was such a willing worker, always ready to volunteer his services and undertake tasks large and small. Maurice will be greatly missed by all his friends, playing companions and work colleagues with whom he associated over such a long period.

Peter Scurfield



What's been going on at OVRA? Royal British Legion

Our speaker in September was Peter Wakeham who joined the Army as a young lad, giving him the opportunity to go overseas. Owing to his stature and the last three digits of his service number being 007, he was known as Titch Bond! When, reluctantly, he had to leave the Army to look after his mother, he decided he wanted to work for a charity and he worked for various charities both in this country and abroad, always as a fund raiser. His position in the Royal British Legion is Community Fund Raiser for Surrey and he was full of praise for the county – we are very supportive and very generous.

The British Legion was formed in 1921; their aim is to provide support for servicemen and women and their families. What I did not realise was how much support they give whether it is going to someone's home to change a light bulb or helping them financially. It appeared that nothing was too small or too much trouble. There was no age or time limit as long as you had been a serviceman or woman, they were there to support. Peter gave details of various fund raising done by the general public and showed two videos which demonstrated some of the activities the disabled can take part in.

He explained the Legion was not in competition with Help For Heroes who do a wonderful job but the RBL is supporting past generations as well as present day and will continue as long as needed.

Poppy Day will soon be upon us so please give generously.

Siegmund Homar

Entertaining Antiques

For our Saturday Social on 12th October, the guest speaker and valuer was antiques expert David Ford, best known for his TV appearances on Dickinson's Real Deal and Secret Traders.

David entertained the 80-plus audience at Onslow Village Hall with stories of his highly varied career before moving into the world of antiques.

After a buffet supper, supplied by Molly's in The Square, David talked about and valued many items which he had invited members of the audience to bring along. This proved highly entertaining and quite a surprise for some present, when they discovered they had either brought along a fake or a small fortune!

If you haven't attended any of our Tuesday Talks or Saturday Socials, now you know what you've been missing! Don't forget that entry to the talks is free for OVRA members!

Here's what's coming up in the next few months...

Forthcoming Events

Tuesday 12th November

From Caves to Computers: A Brief History of Animation

The speaker will be Andy Joule MA FRSA, who is Senior Lecturer in Film & Animation at The University for the Creative Arts in Farnham.

The history of animation can be traced all the way back to one rainy evening in a Neolithic cave. Since then, we have been fascinated by making pictures come to life. This talk will chart the evolution of animation from cave paintings through to the latest Hollywood computer creations. Andy will be bringing one of his animation models used when filming a children's TV series, to demonstrate how they come to life on screen. This illustrated talk is bound to be of interest to children and adults of all ages.

Complimentary mulled wine and mince pies as well as tea and coffee will be served from 7.15pm.

Tuesday 14th January

Late Georgian Guildford

The speaker Roger Nicholas is a Guildford Town Guide. His talk will cover the period from the end of the Napoleonic Wars to

COMMUNITY NOTICE BOARD

If you would like to tell Onslow Village residents about your group's forthcoming events, or issues that might interest them, please email ovra.news@ntlworld.com or send to The Village Voice c/o 17 Friars Gate, Guildford GU2 7PQ.

Next copy date: 14th December for publication in early January.

Guildford Choral Society

slightly down. During the judging in the Small Hall, members

Our next concert is Handel's "Israel in Egypt." Jonathan Wilcocks conducts Guildford Choral Society with the Hanover Band.

Venue: Guildford Cathedral

Saturday 9th November 7.30pm

Tickets: £25 Front Nave, £17 Mid Nave, £10 Rear Nave, £19 West Gallery. Concession prices are £10 and apply in any part of the Cathedral except the Front Nave, where no concessions are available. Concession prices apply to children and students in full-time education, disabled and unwaged people but not to older people.

Tickets from the Electric Theatre (01483 444789) and Guildford Cathedral (01483 547860) or online. Also from Derek Lake: boxoffice@guildfordchoral.org or 01494 675571 (no fees).

RSPB

The RSPB Guildford & District Local Group meets in Onslow Village Hall each month September-May each year generally on the 2nd Thursday (afternoon) and 4th Wednesday (evening).
[Forthcoming meetings:](#)

Thursday 14th November starting at 2.15pm

Australia – an island that allows for a huge variety of wildlife: Terry Youlton, one of our members, presents a talk on one of his favourite places.

Wednesday 27th November starting at 7.45pm

The Trials and Tribulations of a Natural History Presenter, followed by My Garden and Other Animals: The One Show's Mike Diger will give a double dose in his inimitable style. The evening is sure to be one of the highlights of the season.

Thursday 12th December starting at 2.15pm

The Wildlife Artist's Handbook: Jackie Garner, the wildlife artist makes a welcome third visit to a group meeting. Membership of the Group is open to all RSPB (Royal Society for the Protection of Birds) members, and visitors are welcome at any meeting (£3 at the door).

All information on our activities: rspb.org.uk/groups/guildford
email: gadcom2010@gmail.com, tel: 01372 467074

Onslow Village Garden Club

The Garden Club has had a busy summer. The June Show had problems with entries because of the late Spring – this Show is mainly for roses and sweet peas, and many were still in bud. However, it was encouraging that more members had entered than last year, though the number of exhibits was

in the main Hall heard a talk about growing tubsias, then they had refreshments and viewed the Show.

The July meeting was a refreshing change. Following a demonstration of two flower arrangements – the largest and most striking involved five sunflowers – we enjoyed splendid home-made cakes to accompany tea or coffee! Afterwards almost everyone produced an arrangement with equipment, flowers and foliage supplied and contributed. The finished products filled two long tables, and made a fitting end to our last meeting before the August break.

Our big event of the year took place on 7th September: the 57th Annual Show. Exhibits of vegetables, fruit, flowers, cookery and handicrafts were displayed in the morning ready for judging. At 3pm the hall was open for viewing, with time to walk around, discuss the colourful displays and have tea before the presentations by Mrs Shirley West of the British Heart Foundation. Again, entry numbers were higher than last year with 191 exhibits.

September's speaker, Mr John Baker, had as his subject Perfumes of Plants. He had previously given a talk on hostas and shown us around his lovely plant-packed garden.

If you are interested in gardens, why not join?

More details about our friendly club can be obtained by phoning 577035 (you don't have to live in the Village to join!).

Vivace Chorus

Saturday 16th November

Vivace Chorus and the Brandenburg Sinfonia, conductor Jeremy Backhouse

"The Armed Man" Karl Jenkins

Mass "In time of War" Joseph Haydn
Guildford Cathedral 7.30pm.

Free pre-concert talk at 6.30pm

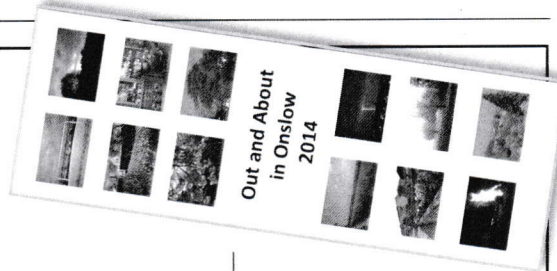
Tickets £12-£24 from Tourist Information
G 444334 or online

All Saints' Church

'Out and About in Onslow'

2014 Photo Calendar – £5 each

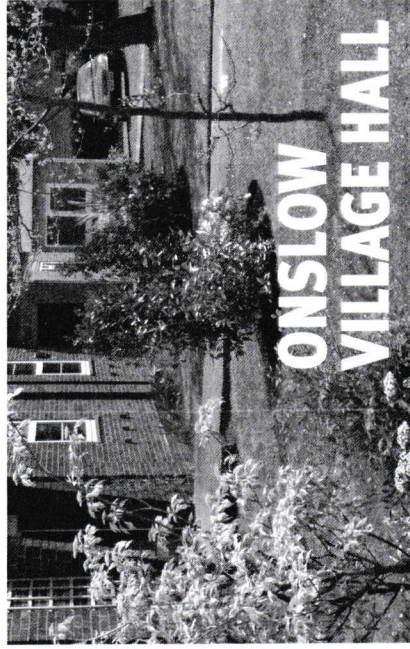
Following our competition, the 2014 calendar is now on sale! Available from Lucy Wallis 01483 302122. All funds raised go towards the work of All Saints' Church and the charities we support.



Out and About in Onslow 2014

life in the town and some of the personalities of the time. Undoubtedly, this talk should add greatly to our knowledge of Guildford, showing us a side of our town of which few of us will be aware.

All events are held in The Village Hall in Wilderness Road, Onslow Village GU2 7QR. Tuesday Talks begin at 7.45pm with complimentary refreshments served from 7.15pm. Entry is FREE for OVRA members, nonmembers welcome at £3 each.



ONSLOW VILLAGE HALL

As a community, we are fortunate to have this wonderful facility in The Square, Wilderness Road and it is the venue for most of OVRA's events. To clear up any confusion however, Onslow Village Residents Association doesn't manage the Hall or its car park. This is the remit of the Village Hall Management Committee: for contact details, please see the notice board outside the Hall.



There is a petition calling for speed restrictions in the Village. If you'd like to see it or sign it, you can do so at Molly's in The Square.

If you have any comments, views or suggestions...

...including ideas for content for our website, please speak to a committee member at any of our events, write to The Village Voice c/o 17 Friars Gate, Guildford GU2 7PQ or email ovra.news@ntlworld.com

