



THE VILLAGE VOICE

THE NEWSLETTER OF ONSLOW VILLAGE RESIDENTS ASSOCIATION – ISSUE THIRTY THREE JULY 2013

All Saints Playgroup closes after 37 years

by Ollie de Kretser

After helping to guide generations of children through their early years, All Saints Playgroup has closed its doors for the final time. Not through lack of funding or children, but through the increasingly complex politics involved with running a playgroup thanks to the government and more specifically, OFSTED.

It is a sad occasion for the parents and staff, including current manager and long time Onslow Village resident Annie Cox, who has been connected with All Saints for many years. All four of her children attended the playgroup under previous manager Christine and after working there for a few years in a support role, Annie took up the reins as manager in 1999 when Christine retired.

More recently Annie has also started working with the Guildford Street Angels who walk through the town on various nights during the week, helping vulnerable teenagers and adults find their way. She has also begun volunteering with town centre chaplain Rob Borem, who started a day chaplaincy, allowing the church to go out and meet people in the town, bringing the presence of God to the majority of people who don't go to church nowadays. Annie's patch is the second floor of the Friary Centre and she has spent the past 18 months meeting employees from a large number of shops there, offering them an opportunity to have a chat or talk about things in more depth if they want to. "That's what we're there for; it's about building relationships and making connections."

It's no surprise that helping the community is important to Annie, who joined a very established and mature team at All

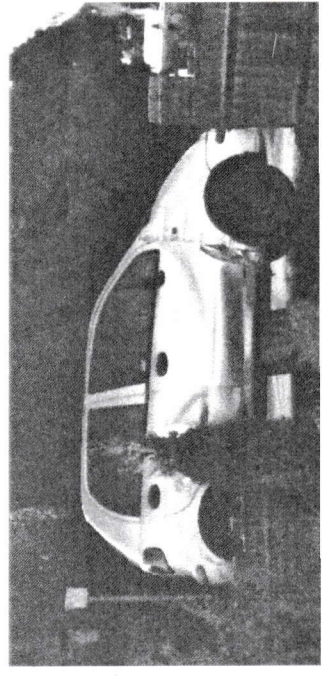
Concern at proposed enlargements of village schools and likely increase in traffic

As most people in the village will be aware, expansion of both Queen Eleanor's and Onslow Infants Schools has been proposed to accommodate a substantial increase in pupil numbers.

With rather short notice and little publicity, both schools held public meetings at which grave concerns were raised about these plans and the inevitable increase in vehicle movements in the village that this will bring.

Residents are rightly concerned, particularly following the ten accidents near the bend in Queen Eleanor's Road, with the resultant danger to people and property. One household has experienced six incidents alone, which have resulted in severe damage to their property. These events were highlighted in an article in the January 2013 issue of The Village Voice.

Despite the promise of early action, no report has been produced on either the nature of the bend or the road surface. Now faced with this increase in traffic flow, Nancy Thomson is, again, writing to Mr Assadi, Leader of the Traffic Team at Surrey County Council's Highways Department.



take on the new regulations and paper work. Everyone is feeling very sorry about the closure, but fortunately, only a small number of children will need to change playgroups with everyone else moving on to school next term. "We've only got six who will have to move to other settings and those are parents who I spoke to at the outset and suggested if they could find a place somewhere else that would be better because then the children wouldn't have to move, but they wanted to come anyway and I couldn't say no really."

Closing the playgroup is not all bad news and for Annie it will give her more time for the chaplaincy and other community projects. "I would like to have some more time to do things better and properly. Jobwise, I'm a nurse, so I might go back to nursing in the New Year - that's my plan."

The driving force has always been that we can both contribute to the community, so there's not any sort of competition between the two playgroups. I think the money side has a pivotal influence because if you are driven by money then it becomes more of a motive and it has never been like that for us. Our motive has been to care for the children and support the families, and support the parents in parenting, basically."

The playgroup has had a place in the village since 1976 but with the government changes, regulations, increased

take on the new regulations and paper work. Everyone is feeling very sorry about the closure, but fortunately, only a small number of children will need to change playgroups with everyone else moving on to school next term. "We've only got six who will have to move to other settings and those are parents who I spoke to at the outset and suggested if they could find a place somewhere else that would be better because then the children wouldn't have to move, but they wanted to come anyway and I couldn't say no really."

Closing the playgroup is not all bad news and for Annie it will give her more time for the chaplaincy and other community projects. "I would like to have some more time to do things better and properly. Jobwise, I'm a nurse, so I might go back to nursing in the New Year - that's my plan."



The staff of All Saints Playgroup at the farewell picnic held on 11th July. From left to right: Beverley Fried, Amanda Woods, Joss Cooper, Annie Cox, Sue Green and Caroline Curnier



Since it is proposed that Queen Eleanor's School increase pupil numbers from 240 to 360 and Onslow Village School increase from 180 to 270 pupils this will increase traffic enormously in an already excessively busy area and have serious consequences for the safety of the school children and residents of Queen Eleanor's Road which connects both schools.

Ten serious accidents have occurred recently along Queen Eleanor's Road when motorists left the highway, mounted the pavements and ploughed into adjacent gardens at different times of the day.

With such an increase in pupil numbers at both schools, with children travelling further from home as the catchment area expands, the resultant increase in the number of cars at "drop off" and "pick up" times will only add to the already excessively dangerous number of vehicles in Queen Eleanor's Road. At times parents' tempers have flared up and residents are unable to enter or exit driveways.

At no time has there been any mention of a School Traffic Plan being put in place! In the congested, dangerous conditions as already exist, it is obvious for the safety of any pedestrian, child or parent, or motorist, that these school pupil numbers should not be increased until this problem has been addressed with so many extra pedestrians and motorists in the road connecting the two schools.

Despite the increased volume of traffic to be possibly generated from September 2013, if pupil numbers are increased, there has been no mention of any measures needed to be put in place at the junction of The Chase and Elmside which leads directly to Queen Eleanor's Road and access to the two schools. Removal of the parking spaces in the area which cause so many problems has not been given any consideration either.

N.E. Thomson

RECENT TUESDAY TALKS

Kent Surrey Sussex Air Ambulance



The speaker was Graeme Horne who gave a detailed account of the services that the Air Ambulances provide. The service has two helicopters and from their base in Redhill, are able to reach any part of the region within 20 minutes. They always fly with one pilot, and at least one doctor and one paramedic who bring to the scene the type of expertise and equipment that would normally only be found in the resuscitation area of a hospital's accident and emergency department.

The Air Ambulance attends approximately 4-6 emergencies per day and operates 365 days a year. They also hope to be operating by night soon. Graeme gave an account of two road accidents, one of which involved his own son whose life was only saved by the actions of the doctor from the Air Ambulance. The Air Ambulance is a registered charity (it is not part of the NHS) and is completely dependent on the generous donations of the public. Perhaps you may be able to nominate them as your charity of the year at a club you belong to, or make regular donations. And Graeme left us with a mission statement: "Tell three people about us." *Siegmond Homar*

Angels on the Streets of Guildford

Despite a wet night, 58 members assembled to hear Annie Cox talk about Guildford Street Angels. Now fairly common in many busy towns and cities,



our Angels began in 2008 under the auspices of the Town Centre Chaplaincy and now have some 80 volunteers who spend a night each month on duty. Rooted in the Christian message that we should love our neighbour, and that we are each called to serve one another, they are on the streets on Friday, Saturday and some Monday evenings. They talk to, and help, young (mostly) and old who have had too much to drink, are under the influence of drugs, are homeless, depressed or otherwise disturbed.

Working on the police radio net, the pairs of Angels help people on their way home. Sweeten up broken glass, sell ambulances if

Flourits undertake a 6-session training programme, a 'tea' on the streets, and are then ready for their first 10pm-4am shift which starts with a briefing and prayer from that night's Lead Angel. No two shifts are the same, all are busy, they have some wonderful conversations with happy revellers, as well as assisting the less happy, before a welcome return to the YMCA for coffee and a debriefing session after the clubs have closed. Everyone is a volunteer and all the expenses of the operation are funded through donations from individuals and from the Guildford churches.

Anthony Jacques

The Hog's Back Brewery

The Hog's Back Brewery at Tongham is well known to many, so it was a delight to welcome Mel Rees, one of their long-standing guides, to tell us something of the brewery's history and current development plans, and taste a few of their beers.

Established for more than 20 years, they produce 2.5m pints annually in various styles, mostly cask beer for pubs, with their bottled products having a more national customer base through supermarkets, independent victuallers, National Trust and Royal Horticultural Society outlets. Mel brought four examples for us to sample – the flagship TEA (Traditional English Ale), but including Summer Ale and the rather stronger Hop Garden Gold.

Seasoned with countless local jokes, Mel gave us an excellent insight into the brewing process, the sourcing of the (almost entirely local) ingredients and the possible further expansion of this successful 30-strong local enterprise. Perhaps the best advertisement was the Surrey girl who chose her university (Edinburgh) because they stocked TEA in the union bar! It was truly one of the very best recent OVRA evenings.

Anthony Jacques

If you don't make full use of your membership by attending our Tuesday Talks, now you know what you're missing! Don't forget that OVRA members get in for free!

Here's what's coming up in the next few months...

Forthcoming Events

Our next Tuesday Talk is on 10th September. The talk is entitled **The British Legion Today** and will cover its history, links to other organisations and the Poppy Appeal. On 12th November Andy Louie's talk is called

Saturday 12th October
7.15pm-10.30pm

“Entertaining Antiques”

Join us for what promises to be an unusual and highly entertaining evening with local TV antiques expert and entertainer David Ford (*Dickinson's Real Deal* and *Secret Dealers*).

David will talk about his varied career, followed by an opportunity to have your own antique piece valued, plus there will be an interactive valuation game to test your knowledge.

There will be a bar, raffle and buffet supper, with catering provided by Molly's of The Square.

Tickets:

£15 for members
£17 for nonmembers

To book, call Wendy on 01483 300360 or email ovraticketsales@gmail.com



All events are held in *The Village Hall in Wilderness Road, Onslow Village GU2 7QR. Tuesday Talks begin at 7.45pm with complimentary refreshments served from 7.15pm. Entry is FREE for OVRA members, nonmembers welcome at £3 each. Entry to Saturday Socials by tickets sold in advance with reductions for OVRA members.*

The people behind the scenes and what they do for OVRA

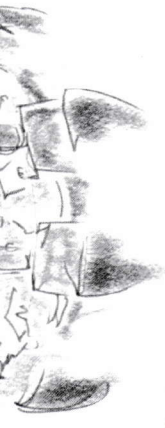
The Chairman:

Eric Lawrence

Minutes Secretary:

Sally Sparham





Treasurer:
Anthony Jacques
Membership Secretary:
John Empringham

Talks Secretary: Angela Joule
Editor, The Village Voice: Marian de Kreiser

Other committee members: Sue Hawkins, Wendy Hughes, Dennis Hurkett and Steve Mills

We meet every two months for a couple of hours on a Tuesday evening in the Village Hall to plan events and to highlight local issues.

We are currently looking for new blood to join the team, particularly for ideas and help with future social events. If you feel you have ideas, and enthusiasm for life in the village we would love to hear from you. We invite you to come along to our next committee meeting to see how things work and to see if it's for you. We all have skills and talents. There is always something that any one of us can contribute.

Don't feel you will be taking on a heavy commitment. We all share the work. Just give whatever time you feel you can.

For more information, please contact: Eric Lawrence on 01483 575956, or John Empringham on 01483 562657

MAURICE BLAND

It is with great sadness that we pass on the news that Maurice passed away in the Royal Surrey County Hospital on 10th July. A larger-than-life character who was part of the fabric of village life for many years, Maurice served on the OVRA committee as the representative of the Village Hall Management Committee for so long, no one is quite sure when he started! Always jovial and willing to help, he will be sorely missed.

If you have any comments, views or suggestions...

...please speak to a committee member at any of the events (they're the ones wearing name badges!), write to The Village Voice c/o 17 Friars Gate, Guildford GU2 7PQ or email ovra.news@ntlworld.com

OVRA on Facebook and Twitter

Facebook: search for "Onslow Village Residents Association"
Twitter: find us at <http://twitter.com/OVRA>



From Caves to Computers - A Brief History of Animation which will chart the evolution of animation, from Neolithic cave drawings to high-tech Hollywood computer-generated imagery.

COMMUNITY NOTICE BOARD

If you would like to tell Onslow Village residents about your group's forthcoming events, or issues that might interest them, please email ovra.news@ntlworld.com or send to The Village Voice c/o 17 Friars Gate, Guildford GU2 7PQ.

Next copy date: 14th September for publication in early October.

Onslow Village Garden Club

You are welcome to come to our monthly meetings at the Village Hall starting at 7.30pm on Wednesday evenings. We usually have an illustrated talk for about 40 minutes before a chance to stretch our legs, enjoy refreshments, chat, and look at the Sales Table. After the break, the speaker usually takes questions before raffle prizes are announced and we leave for home. Come as a visitor for £2 an evening, or join for the year for £12 (which is reduced as the months pass.) So far this year we have had some absorbing illustrated talks. The subject for April was "Bees in your Garden". In May the intriguing title was "Secret Gardens of London". These ranged from the Little Cloister Garden besides Westminster Abbey to the Garden Museum next to Lambeth Palace and the Chelsea Physic Garden, founded in 1673 by the Society of Apothecaries.

Our June meeting always features the Summer Show. While the exhibits were being judged in the Small Hall, this year, Miss C Gubler talked about fuchsias. During the interval, members looked at the Show, had refreshments, and reassembled for the presentation of awards. On 17th July the subject is Flower Arranging, our Annual Show is on 7th September and on 18th September the talk is entitled Perfumes of Plants.

Why not come along to our next meeting? We are a friendly group and would welcome new members! To find out more, phone 577035.

Recycling News

The green bins are coming ...

With the new Recycling More service announced by Guildford Borough Council, residents will no longer need

to sort and separate recyclables, because from September, the mixed materials will be collected in a new single green wheellie-bin. The new disposal system will be thus:

Once the Council have collected the recyclables, they will then bulk it all up: lots of smaller loads on the vehicles are deposited together at the Slyfield transfer station and then placed on much larger vehicles for transport to the facility. The material is sold to waste and recycling company Biffa who will take the material to one of their Materials Recycling Facilities (MRF) where they will separate and sort the recyclables. Once the material has been separated, Biffa will in turn sell it on for recycling.

There is an active market for recycled material so the outlets change regularly. Paper, metals and plastic have the highest values per tonne and are typically turned back into paper, metal and plastic products. There is also strong demand for glass, which can be melted down or used for aggregate in road construction. The market who pays most determines the actual end destination. For more information on Biffa and their outlets, philosophy etc visit their website on www.biffa.co.uk/ For information how an MRF operates visit www.youtube.com/watch?v=7CFE5tD1CCl

Can you make someone's day?

Two rings were lost, possibly outside the village hall by the notice board, on Sunday 26th May. They are silver, one with a red gem in the middle and the other with several clear ones in an arrow shape. They are not particularly valuable but are of huge sentimental value to their owner, who would be overjoyed to be reunited with them. Did you find them or know anything about them? If you can help, please call 07720 945430 or email ovra.news@ntlworld.com and your message will be passed on.