



# THE VILLAGE VOICE

THE NEWSLETTER OF ONSLOW VILLAGE RESIDENTS' ASSOCIATION – ISSUE SIXTEEN APRIL 2009

## OVRA on Facebook

*Dear Householder,*

With the AGM on 10th March, it is a new year for the Association. If you have not renewed your membership please do so now. If you are not a member why not join? Just £4 per household will give you a year's worth of free entry to all Tuesday Talks, reduced entry to any Saturday Socials and four copies of the Village Voice.

We have a varied programme of events and try to suit all tastes. For example in January we had our Annual Supper with a magician performing at each table and on the stage. It was a 'magical' evening enjoyed by all. Then in February we had a talk by Roland Sidwell who is the Curator of Guildford House and stood in for Bill Bellerby. He spoke of his "Success and Failure" in the music world and finished with some wonderful singing. The recent AGM was followed by drinks and nibbles then a highly instructive and entertaining talk by Chloe Dancey who is the shepherdess on the Loseley Estate. Her talk was about shepherding through the ages and amongst other things we heard about the origin of such phrases as 'by hook or by crook' and 'brand new'. There was also a display of traditional shepherding tools.

So if you want to be entertained and instructed please do join the Association or come to the next meeting on the 14th April with a talk by Jane Alexander on 'Why recycle and what happens to the recycled products'. We hope to see you there!

*Joe Pais*

Chairman

## Meet your local PCSO

If you have a Facebook account, you might be interested to know that we are on a group for Onslow Village

## PARKING PROBLEMS BACK ON THE AGENDA

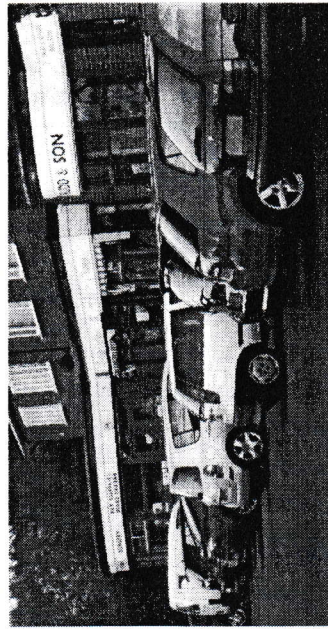
Take a look at any of OVRAs old minutes' books from the last few decades and you are likely to find mention of problems caused by parking. In 2003, to the delight of some and the consternation of others, Controlled Parking Zones were introduced in Onslow Village and were further extended in 2004-5. Whilst the resulting displacement parking had some effect on the unregulated areas at the time, it wasn't until 2008 when the University closed one of its car parks on campus for building development, that a more serious impact was felt. Negotiations took place with Guildford Borough Council for provision of alternative parking facilities nearby, but nothing materialized.

The result has been an inevitable increase in on-street parking in Onslow Village and surrounding areas, exacerbated by an increase in on-street commuter parking. There is evidence that commuters using Guildford Railway Station as well as those working in town are now parking their cars as far away as Onslow Village.

There are particular problems for shoppers trying to park outside the parade of shops in the Village. It appears that there are now a number of "long-term" parked cars as well as commuters, making it impossible for shoppers to park close by.

When informed of this, Andy Harkin, On-Street Parking Coordinator with Guildford Borough Council, stated that he had received no complaints on the matter. Furthermore, the Council does not have plans for extending parking restrictions within the village and there are no plans even to review the situation in the near future.

If you are experiencing inconsiderate parking in your road with regard to access or vehicles parked on footpaths, you have a chance to voice your concerns:



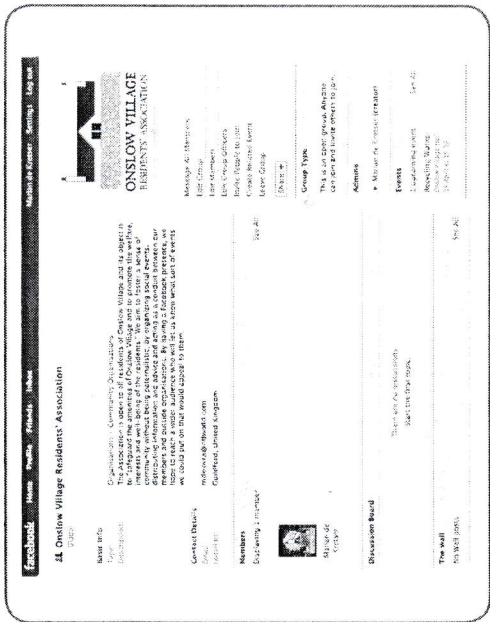
Your local Borough Councillors have arranged a meeting on **7th April at 7.30. p.m. in All Saints' Church Hall, Vicarage Gate**. Kevin McKee (Guildford Borough Council's Parking Manager) will be present and will outline measures which could be introduced to control parking.

Please come along and give your point of view.

**SPARROW AND SON (YOUR LOCAL BUTCHER & FARM SHOP)**



Residents' Association. With it, we're aiming to reach a wider audience and find out what sort of events will appeal to a broader cross-section of the community. We'll also be using it to advertise the talks and social events and display a few of the archive photos we have. Take a look and let us know what you think.



## The 'VILLAGE VOICE'

...is published every 3 months or so and is usually only delivered to members, but once a year, just after the AGM, it goes to all houses in the village.

The Association was originally set up in 1956 to represent residents' views on the Village Hall Management Committee, as it still does to this day. It also aims to safeguard the amenities of Onslow Village and to promote the welfare, interests and well-being of the residents.

The Association is run by a committee of unpaid volunteers, who meet regularly to discuss issues affecting residents, and organize social events.

If you would like to support the Association (and receive every issue of *The Village Voice*), annual membership is just £4 per household and you can join by filling in the form overleaf, at any of our social events, or by calling 01483 533762.

We would also welcome your views, comments and suggestions; please take a moment to fill in the form overleaf, send us an email or visit our new Facebook page!

is Angela Christie and I'm the Police Community Support Officer (PCSO) for Onslow and the University of Surrey.

I work alongside PC Mike Trotman who is the neighbourhood specialist officer or local beat officer for the area. I've worked for Surrey Police since 2007 and

my role is to patrol Onslow, providing a visible presence and also to offer reassurance. I love to talk and spend a lot of time chatting to residents both young and old about anything that is affecting them. I also spend time talking to shopkeepers and young people, visiting day centres and local schools, as well as attending Neighbourhood Watch Meetings and residents' groups.

By finding out what's bothering you I can then work with other agencies such as the local Council to try and get any issues or problems resolved. This could be tackling antisocial behaviour, getting graffiti removed or clearing up areas that have fallen into disrepair.

I will be holding a **drop-in surgery at Onslow Village Hall, Wilderness Road on Saturday 25 April between 11am and 12 noon** for anyone who wants to come along and have an informal chat about any issues that may be bothering you. You don't need to book, just turn up! You might like to make a note of future police surgeries at the Village Hall on 20th June, 8th August and 26th September from 11am—12 noon.

Away from work, I love cycling and really enjoy going out into the countryside for a 40 mile ride. A few years ago I completed the London to Brighton bike ride which was great fun, but hard work!

I'm always looking for new ways to meet members of the community, so if you run a local group in Onslow please let me know, as I'd be happy to pop along. When you see me out and about in Onslow please feel free to stop me and say hello. I look forward to meeting more of you soon!

**To contact Angela please call 0845 125 2222 or contact her via the neighbourhood page on the Surrey Police website [www.surreypolice.uk](http://www.surreypolice.uk)**

As I am, some most of you know, Colin Sparrow retired at the end of last July, after many years serving the community in Onslow Village and I am sure we all wish him well in his retirement.

My name is Polly and I have taken over the village butcher's shop and have created more of a farm shop feel as an addition to the butchery.

I am now serving as much local and free-range meat as possible, i.e. Plantation Pigs, free-range pigs for our pork and Brookland White free-range chickens. We also do a quality barn chicken, so suiting all pockets. We also do a wide selection of frozen fish, vegetables, Scottish steaks and local free-range eggs, milk, bread and much more. We have expanded the delicatessen counter with deep-filled pies, pasties, cheese and sausage rolls. We still have the home-cooked ham as Colin always did and have added our home-cooked chicken and turkey, which you are welcome to come and try, as tasters are always available.

Recently the shop was broken into, the burglars breaking the back door and taking the goods blatantly through the front door, stealing all our recently delivered lamb, pork, steaks, gammons and chickens, which was heartbreaking and a devastating blow to the business. It looks like they may have been disturbed, as they left behind a bag of meat outside the front door in the street, but even so, they stole and damaged over three thousand pounds worth of meat, food and property.

Taking over Sparrow's has been a challenge to me, especially in this financial climate, but I am enjoying running the shop in the village and with your support, it can survive and flourish – it would be a shame to lose just about the only butcher left in Guildford. If you have not been in since the change over, do pop in and say hello and just have a look around, we would be pleased to see you.

For your information, we do home deliveries on a Friday free of charge as long as you spend at least £20.

Hope to see you in the shop some time soon.

Polly – SPARROW & SON





## OVRA Events 2009/2010

**Tues 14th Apr Recycling Works!** Jane Alexander from Guildford Borough Council will be discussing why residents should recycle, where our recycling goes and how it is used, and how Guildford is doing.

**Tues 12th May Guildford: The War Years 1939-45** David Rose returns to give a talk based on his book of the same name and how it came about. He will also bring some of the artifacts he has collected.

**Tues 9th June Wildlife Aid** Michael Berwick will give a talk about the work of this organization, as seen on TV's "Wildlife SOS".

**Tues 14th July Fascinating Fungi** The speaker, Ray Tantram, has been studying fungi for many years and leads regular fungus forays.

**Tues 8th Sept A Tudor Gentleman of Surrey: Sir William More of Loseley** Speaker: Isabel Sullivan from Surrey History Centre.

**Sat 10th Oct Cheese and Wine Evening with music by Phoenix** Look out for details and ticket prices in the Village Voice or on posters.

**Tues 10th Nov A Country Life: Social Aspects** Tim Winter returns to give a talk about what life in the country was like many years ago, illustrated with postcards from his collection.

### 2010

**Tues 12th Jan Clandon Park and the Onslow Family** This talk will be given by June Davey.

**Sat 6th Feb Annual Party** Look out for details and ticket prices in the Village Voice or on posters.

**Tues 9th Mar AGM + speaker** Details to be confirmed.

All events will be held at the Village Hall in The Square, Wilderness Road and will start at 7.30pm. Tuesday Talks are free for members.

Non-members are welcome at £3 each. Tickets for Saturday Socials will be sold in advance.

**NB** Details are correct at time of printing, but may be subject to change. Please look out for announcements in The Village Voice, on posters or in special flyers.

## Membership Renewals

OVRA Memberships expired on 31 March. To renew or join, please fill in the form below and return it with your payment (preferably by cheque), to one of the addresses below.

Please clearly mark the envelope: **OVRA Membership.**

- 17 Abbots Close
- 5 Bannisters Road
- 28 Bannisters Road
- 17 Curling Vale
- 57 Curling Vale
- 9 Farm Walk
- 17 Friars Gate
- 7 Hedgeway
- 41 Hedgeway
- 68 High View Road
- 17 Litchfield Way
- 8 Manor Way
- 10 Vicarage Gate
- 16 West Meads
- 17 Windsor Close

*We would like to thank all those members who have delivered the Village Voice and OVRA flyers to households during the past year; without your invaluable efforts the job of the Committee members would be much harder.*

## Everything from potholes to empty salt bins

If you need to report a pothole (and who doesn't?) or the salt bin on your street is empty after February's snowfalls, or you'd like one installed for the next time it snows, you can contact Surrey County Council's Highways Department on 0300 200 1003 or report problems online at: [www.surreycc.gov.uk/](http://www.surreycc.gov.uk/) and click on "Roads and transport" on the left of the screen.

# COMMUNITY NOTICE BOARD

If you would like to tell Onslow Village residents about your group's forthcoming events, or issues that might interest them, please email [mdk-ovra@ntlworld.com](mailto:mdk-ovra@ntlworld.com) or ring 07726 952466. Next copy date: 25th June.

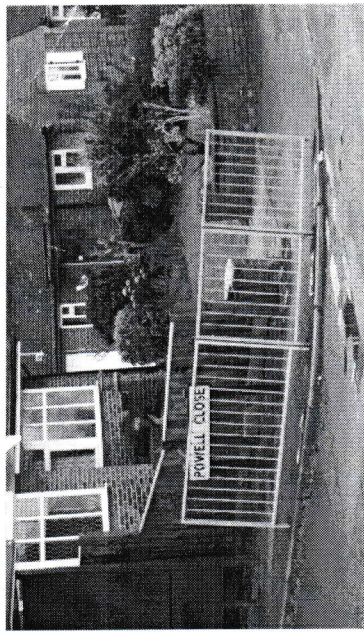
## RECYCLING NEWS

### Bring and Take

The next Bring and Take in Onslow Village will be in the Village Hall on Saturday 25 April 2009 at 10.00am. Bring your unwanted Christmas presents or other good quality items (not electrical) that you think may be of use to someone else. This may also be an opportunity to pick up that item you always wanted but thought was an extravagance. I managed to find a knife block that I find

## Guildford Evening Decorative & Fine Arts Society at Onslow Village Hall

**Wed 8th April Working Miracles at Assisi - The Basilica of St Francis** What happened after Giotto's famous frescos were damaged by earthquake? Speaker: Elizabeth Gordon, lectures in Britain and in museums in the USA.  
**Sat 25th April** By popular request we are holding our **Quiz Night with Leonard Bay Sinner and Daff**



## Railing against unsightly obstructions

Following the installation of the pedestrian guard rails at the junction of Wilderness Road and Powell Close at the request of Onslow First School to SCC Highways Department, a degree of concern has been expressed by a number of local residents.

Local resident Mike Joule, wrote to both Anne Milton as local MP, and Councillor Tony Phillips as local councillor, raising some of these concerns.

As a result, a meeting was held at the site in mid-March with Councillor Phillips and representatives of Surrey County Council Highways Department and another local resident, concerned about the installation. Unfortunately the Head of Onslow First School was unable to attend.

The main issues of concern were the quality of the installation and the resultant obstruction. Following representation by Mike Joule, Derek Lake from SCC Highways admitted that the installation did not meet their own standard in several respects. However, due to lack of funds, he was unable to give assurances that any of the these issues could be addressed.

The principal issue was that of access between the railings and the cross falls to the pavement, making it impossible for motorised wheelchair users to negotiate.

One local wheelchair-user who did not wish to be identified stated that she no longer used the footpath at this point but preferred to negotiate the railings by using the road. This concern has also been put to Mike Joule by two other disabled wheelchair-users.

Councillor Phillips expressed serious concern regarding this issue and agreed with Mike Joule to find a willing wheelchair-user who would demonstrate the difficulty of access created by the current installation.

Derek Lake also admitted that it was unfortunate that



searching is part of the fun and everything is free.

### **Williams' Newsagents Window Display**

I hope you managed to catch Williams' Newsagents' window in October. It was part of a campaign to get more residents to compost their kitchen and garden waste. The 1st Guildford Town West Rainbows created the animal artwork showing "wriggly worms" and other garden fauna that help with composting. It was a great success.

### **Composting facility near Wisley**

Wisley Royal Horticultural Society (RHS) is worried that a proposed new site for a composting facility near them may cause problems with plant contaminants being blown in the wind from lorries visiting the site. They do have a very important collection of plants and trees that needs to be conserved. The RHS is also fully committed to the recycling of garden waste through composting at this type of facility. They just have an objection to the site being so close to their gardens.

One way you can help is to reduce the amount of garden waste going to such sites. Having a green cone for your cooked kitchen waste and composters for garden waste and uncooked kitchen waste can do this. Composting is a quicker process if the garden waste is shredded before putting in the composter.

If you are worried about being able to dig a green cone into your garden why not contact the Recyclers. We may be able to help dig the hole with a small working party. Just provide tea and biscuits.

Guildford Borough Council will also be rolling out a weekly collection of kitchen waste from October.

### **Garden Shredder Group**

Why not join the Onslow Recyclers (Shredders) Group for £15 a year and use a garden shredder as often as you like (there is probably one near you in the Village as we have 4 machines). They are especially good at dealing with hedge clippings and prunings.

For further information on any of the above please contact Lesley on 01483 533762

### **Onslow Village Garden Club**

The Garden Club is holding a **Table Top Sale on Saturday 9th May from 9.30am-12.30pm** in the Village Hall.

On sale will be plants, homemade cakes, books, cards, jewellery, household items, refreshments and much more. To book a table, phone 01483 563421 or 573107. Closing date for booking is 20th April.

Tickets £12 available from 01483 571807

### **Wed 13 May The Strange History of Buckingham Palace**

An amusing hour in Royal London through its historical buildings, including St. James's and Westminster. *Speaker:* Patricia Wright, winner of Bodley Head Historical Novel Prize.

### **Wed 10 June Misericords: The Medieval World**

**Turned Upside Down** Intricate carvings of medieval art examining a number of social issues and the role and freedom of the artist. *Speaker:* David Bostwick, specialist in medieval imagery.

Refreshments are available at all the above from 7.15pm and talks start at 8pm. New members and visitors are welcome. Visitors' entrance fee: £5.

Contact Membership Secretary: Angela Logan  
01483 532223.

The Committee look forward to welcoming you to the Hall.

### **The Welcome Club**

We meet on the first Monday of the month in Dray Court's lounge at 2.30pm. (If it's a bank holiday, then it's the second Monday of the month).

The idea of the club is to meet for friendly chats, speakers, raffles, outings, theatre etc. Anyone who is retired is most welcome.

We are looking for new members to join us, so why not give us a try, you might just enjoy it.

For more details, contact Jo on 01483 536531.

### **RSPB Guildford & District Local Group**

The group holds regular meetings in the Village Hall, to which non-members are welcome for a small entrance fee. Illustrated talks cover birds and wildlife throughout the world and the group also organizes field meetings for members, with occasional Public Walks.

For more details, contact the Group Leader Roger Beck on 01483 282417.

### **FEELING THE CREDIT CRUNCH?**

Host one or two International Students. Short or long term.

Call Gina Payday, Homestay on 01483 533448

the railings were not even vertical, but again, funds were unavailable to rectify this. It was pointed out that Guildford Borough Council had in fact moved the Powell Close road sign, following the original complaint to Highways by Mike Joule. Until then, the access had been restricted to less than 1 metre.

However, Derek Lake did agree that the proliferation of street furniture which had appeared at this corner was poor planning, particularly the bus shelter, which all present agreed was both impractical and unsightly in its present location. Mr Lake has agreed to consult with the local authorities for its removal and as result, there is currently a notice on the bus shelter for any residents to comment on its continuing use or removal.

Mike Joule has subsequently received correspondence from Anne Milton MP stating that she was equally concerned about the disabled access at these points and had raised the matter with a senior member of SCC Highways Department at County Hall.

### **VILLAGE VOICE 16 REPLY SLIP**

Name: .....

Address: .....

Telephone No: .....

E-mail address: .....

*You can unsubscribe at any time and we will not pass your details to any third party*

### **Membership (runs from 1 April 09 – 31 March 10)**

I would like to join/renew my membership and enclose £4 per household. (Please make cheques payable to OVRA).

### **Comments/views/suggestions:**

.....  
.....  
.....

Please hand this form in at an OVRA social event, send it to the OVRA Secretary, 68 High View Road, Guildford GU2 7RU or to one of the addresses listed above, or email your comments to [mdk-ovra@ntlworld.com](mailto:mdk-ovra@ntlworld.com).



## Dear OVRA Member

It's that time again – the AGM will be held on **Tuesday 10th March** and the committee would love to see as many of you as possible **in the Village Hall at 7.30pm!**

Come along and enjoy **a complimentary glass of wine** and some nibbles with us and let us know how you would like the committee to run **your** Association for the next year.

**Please bring your membership cards.**

The Agenda for the 52nd Annual General Meeting of the Association is as follows:

1. Apologies for absence
2. Minutes of the 51st AGM held on 11th March 2008
3. Matters arising
4. Committee Report
5. Treasurer's Report and Accounts
6. Appointment of Auditor
7. Annual Subscription
8. Rule Change\*
9. Election of Officers & Committee Members
10. Any Other Business

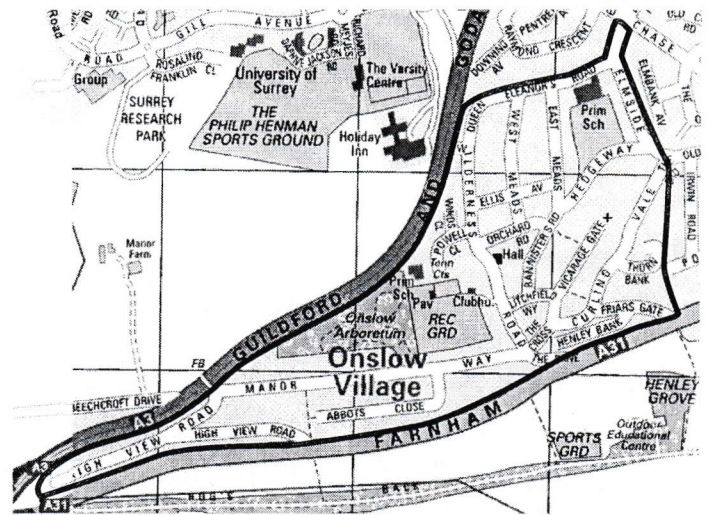
\*Item 8 on the agenda is a proposal to change the rules of the Association to clarify the boundaries of Onslow Village for the purpose of membership of OVRA and create an associate membership for people wishing to join the Association who live outside those boundaries.

Rule 3 currently reads *"Membership shall be per household and open to those residing within the boundaries of Onslow Village, as delineated on plans bound up within the transfer of properties to tenants of Onslow Village Ltd in 1984, together with such persons as the Committee may approve."*

The committee proposes to change this to read *"Membership shall be per household and open to those residing within the boundaries of Onslow Village, as delineated on the map in Appendix 1. [Shown above]."*

*3(a) Associate Membership: Households outside the boundaries of Onslow Village, as defined by Rule 3 may apply for associate membership. On approval by the committee such members shall pay the same fee and be entitled to the same benefits as ordinary members, except that they shall not be eligible to vote at any AGM or SGM, or serve on the committee."*

### Appendix 1 – Map of Onslow Village



After the main business is over, our local Police Community Support Officer Angela Christie will be present (last-minute emergencies notwithstanding) to introduce herself and answer questions about how the police and the local community can work together for a safer neighbourhood. We're also hoping to have a speaker or some other diversion, but watch out for posters or email updates for details.

### Vacancies

We have vacancies for committee members and would love to hear from you if you are interested in joining the committee. Please contact any committee member (without obligation!) and then we'll invite you to come along to a meeting or two so you can get a feel for how we do things.

We'd especially like to hear from anyone who would like to take on the role of Chair, or Minutes Secretary, which will allow Lesley to concentrate on being Membership Secretary.

None of the roles is particularly onerous and you will have the support of an active and enthusiastic committee.

### Renewing Membership

Current memberships expire on the 31st March, so we will have the new membership cards available at the AGM if you would like to renew there and then.

### And finally....

A huge "Thank You!" to all of you who took the trouble to tell us how much you enjoyed the party in January. All of the committee members worked hard to make it a success, so it was wonderful to know that our efforts were appreciated by so many.

### Contact

Acting Chairman: Joe Pais 01483 573107  
Secretary: Lesley Goode 01483 533762

14

14 Windsor Clse