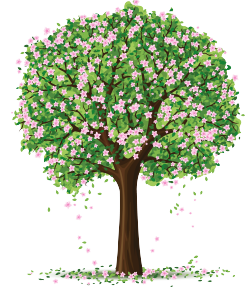




NOAK BRIDGE PARISH COUNCIL SPRING NEWSLETTER

*'We Intend to Serve the Community with
Openness, Honesty, Integrity and Ensure
Value for Money as a Top Priority'*



WEBSITE: <http://www.essexinfo.net/noakbridge-parishcouncil/>

Spring 2019

PARISH COUNCIL SEEKS VIEWS, VOLUNTEERS & IDEAS ON THE NOAK BRIDGE NEIGHBOURHOOD AREA PLAN



Following the Parish Council application for a Neighbourhood Area Plan, Basildon Council consulted every household and reported the outcome.

NBPC website: [LINK to Statement for the Noak Bridge Neighbourhood Area Plan Report](#)

The Parish Council set up as the Neighbourhood Plan Steering Committee and set aside a budget to fund the process. Residents who showed an interest attended training sessions to help develop the plan, but we are looking for more volunteers to get involved so please do contact us. We shall engage with all residents living in the Noak Bridge Parish as it is vital we obtain your views on the proposed housing development of 400 homes on Land East of Noak Bridge and the preservation of the Conservation Area. Workshops and surveys will be held during the year to obtain your ideas. We look forward to meeting you, hearing your views and support on the Neighbourhood Plan.

UPDATE - BASILDON COUNCIL LOCAL PLAN

Regulation 19 consultation by Basildon Council on the Local Plan was held between 1st November to 17th December 2018. Almost 1,600 consultees engaged in the six week consultation where more than 5,000 representations were received. This was reported to the Strategic Planning and Infrastructure Committee on 7th March 2019. The Local Plan which was approved by Council for submission in October 2018, sets out the vision and framework for guiding the future development of all parts of the borough up to 2034. It identifies how many new homes, jobs and businesses are being planned for, where they should be located and what infrastructure is needed to support them. The Council submitted the plan to the government at the end of March 2019. The next stage of the process will be an Examination in Public, during which the plan and its evidence will be scrutinised by a government appointed Planning Inspector.

CHAIRMANS 2019 ANNUAL REPORT

PARISH COUNCIL FOCUS

The Parish Council have been in office for three years now and entering our final year which ends in May 2020 when Parish Council elections will be held. We have worked extremely hard to get the Council back on track since taking office in May 2016 when we found the Council in a bad state of affairs. It has been an upward struggle. Our focus is now aimed at working together with the community to deliver value for money projects, the Neighbourhood Plan and to run the Council efficiently and effectively. We have reached out to the community and managed to build relationships and help financially support a number of projects for the community. It has been our pleasure to work with individuals who have taken on project management and worked hard to deliver them on time and in budget.

VOLUNTEER'S - SERVICES - LOCAL BUSINESSES

We have found the community to be equally generous with their time and money. Each year a Christmas tree has been donated by local businessman John Probert. Friends of the School have held Macmillan coffee mornings in the village hall raising over £1,000. The Nature Reserve is regularly maintained by local volunteers as is the Village Hall. The Noak Bridge School and Pre-school have fundraising groups adding value to local education. Volunteers have been recruited to help develop the Neighbourhood Plan and we look to recruit more. The village residents association headed by Paul Downes organise events to raise funds for local charities and projects to keep the community engaged and isolation at bay. It also ensures social media is kept up to date with local news and events. We are fortunate to have local facilities on our doorstep, like the Hall, Chemist, Shop, Post Office and Noak Bridge Pub who provide us with vital local services making Noak Bridge a great place to live.



PROJECTS AND PROCESSES

We are extremely proud of the projects we have delivered to the community and the processes we have adopted to ensure we are and continue to be a value for money Council. We do regret that not all projects can be successful.

- | | |
|---|-----------------------------|
| ★ NEW CCTV EQUIPMENT | ★ BT BILL REDUCTION |
| ★ FENCING AROUND DOG AGILITY COURSE | ★ LOCAL PARISH MEETINGS |
| ★ FINGER POST SIGNS | ★ SPRING CONSULTATION EVENT |
| ★ PRE-SCHOOL OUTDOOR CANOPY | ★ SUMMER FUN DAY |
| ★ ECO CLAD STORAGE CONTAINER | ★ REGULAR NEWSLETTERS |
| ★ BOULDERS AND BOLLARDS | ★ LEAF SWEEPING |
| ★ IMPROVEMENTS TO VILLAGE HALL CLOAKROOMS | ★ DEFIBRILLATORS |

NOAK BRIDGE VILLAGE - A CONSERVATION AREA???



In 1996 Noak Bridge Village was granted Conservation Status to protect the unique character of the village in both design and atmosphere. Planning measures were introduced on properties in the form of Article 4 Direction to limit permitted development rights. The type of development restricted by this includes alterations to chimneys, roofs, windows, doors, satellite dishes, hard standing drives, erection of porches, sheds, gates, fences, walls, enclosures or extensions and exterior painting. Residents living in the Conservation Area require planning permission before making these alterations to their properties. Noak Bridge conservation area with its distinctive architectural style gives it individual identity and impression of historical development which must be preserved. In 2011 Basildon Council carried out a Conservation Area Appraisal, the findings were published in a Management Plan in 2012. The Parish Council as statutory consultee comment on planning applications in the Parish. Unfortunately there are alterations made to properties within the conservation area without appropriate planning permission. This could be considered a breach of planning policy and enforcement action can and is taken by Basildon Council. Always seek advice from Basildon Council planning services if you are unsure of any planning permissions required.



BUDGET & PRECEPT

The Precept for 2019/20 was set at £44,420.00 an increase of 2.43%. This coming year we have earmarked a budget to fund the Neighbourhood Plan for professional fees, surveys and consultation to gather evidence to support the Plan.



REMINDER

**WE HAVE INSTALLED DEFIBRILLATORS AT
NOAK BRIDGE MEDICAL CENTRE
& THE NOAK BRIDGE PUB**

DEFIBRILLATORS SAVE LIVES



PRE-SCHOOL CANOPY



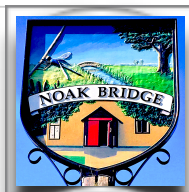
GRANT FUNDING - COMMUNITY GROUPS

Congratulations to the Noak Bridge Pre-school on their newly installed outdoor canopy. The Parish Council were happy to contribute to their fundraising with a small grant enabling the children to enjoy many hours of fun packed outdoor play. Community groups can apply for a small grant towards a community project please contact us or download an application form on our website.

Cllr. Terri Sargent Chairman	Finance, Newsletter, Projects Audit, Neighbourhood Plan	terriken@aol.com
Cllr. Jane Bunting V/Chairman	CCTV, FOI, GDPR	janebunting@blueyonder.co.uk
Cllr. Vicki Jarvis	First Aid, PRoW, Health/Safety	vjarvisnoakbridge@outlook.com
Cllr. Mark Cottrell	Planning, Parish Liaison Group	mark.cottrell2@virginmedia.com
Cllr. Stuart Allen	Basildon Borough Council	start.allen@members.basildon.gov.uk
Cllr. Terri Sargent	Basildon Borough Council	terri.sargent@members.basildon.gov.uk
Cllr. Malcolm Buckley	Essex County Council	cllr.malcolm.buckley@essex.gov.uk
Cllr. Tony Ball	Essex County Council	cllr.tony.ball@essex.gov.uk

REVISED LOGO

We have revised the Parish Logo which is clearer for reproducing. It copies the village sign located on the mound in Wash Road with the Oak Tree, Bridge, Dragon Fly and the village Hall illustrating focal points in Noak Bridge Village.



PARISH COUNCIL MEETINGS 2019 VILLAGE HALL 7.30PM

AGM MAY 21ST
JUNE 18TH
JULY 16TH
SEPTEMBER 17TH
OCTOBER 15TH
NOVEMBER 19TH



DIARY DATES 2019/20

BASILDON COUNCIL RUBBISH CRUNCH
COPPICE LANE SATURDAY
9AM -12 NOON
MAY 4TH, JULY 6TH, AUGUST 24TH
DECEMBER 7TH, JANUARY 25TH

NATURE RESERVE DATES

AGM SUNDAY 14TH JULY 2.00PM
WORKING PARTIES EVERY 3RD TUESDAY

VILLAGE GREEN - ASB COMPLAINTS

Complaints of anti social behaviour on the village green were reported to the police. An operation was set up with the aim to detect and deter in the form of police patrols. We have been advised this was successful but any further ASB issues can be reported, ☎101 or online at:

<https://www.essex.police.uk/contact-us/>



PARKING MATTERS

The Parish Council have received a number of concerns from residents regarding the inconsiderate parking of vehicles including commercial vans and trucks. Any vehicle under a certain weight can park on the Highway but the roads in the village are narrow and this encourages parking on the pavement. Please consider when parking on the Highway to leave room for residents to park and enough space on the footpath for children, pushchairs and mobility scooters to get past safely without having to go into the road.