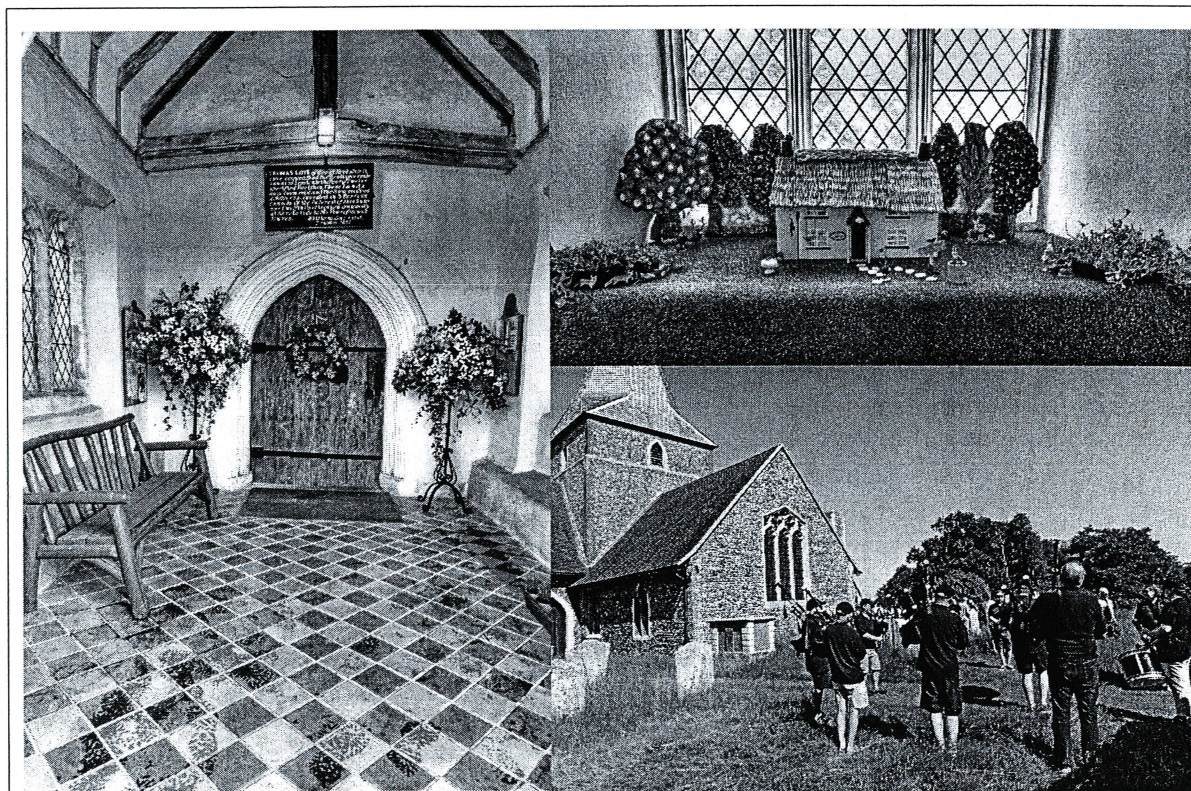


THE MOUNT

Mount Bures Parish News



Against all the odds a Flower Festival in 2021

How amazing to have our beautiful Church packed full of flowers and open for visitors. This year it was so much more than a flower festival it was both a time to remember and celebrate

As we remembered those we as a community have lost over this past year with flowers and prayers we also chose this time to come together and celebrate their lives what they meant to us all and how their memory will live on

In this small village Church there was a spirit of joy and laughter as people reconnected after months of lockdown. Visitors came and discovered something beautiful that right here in the heart of our village God is at work.

We had a service on the Sunday which included; 54 humans, 21 dogs and a budgie called Terry.

Another example of the big heart this village has, we raised £1,500

A massive thank you to all those who made this happen

Thank you

Emma

Sunday 19th September 9:15am Harvest Celebration:

We will be collecting for the food bank. If you want to donate please start leaving at the back of the Church.

WHO'S WHO

The Parish Council

Clerk: Grahame Walkingshaw, 80 Chapel Road,
West Bergholt, Essex, CO6 3HL
01206 240 772 mountburespc@gmail.com
Chairman Cll. Ian Woodman 01787 227689
Cll. Hillary Bufton 01787 227218
Cll. Mark Graham 01787 229950
Cll. Michaela Harris
Michaela.c.harris@hotmail.com
Cll. Fiona Willett fionamacnab@btinternet.com
Bi-monthly meetings on second Wednesdays
7.30pm. Please contact the clerk for details.

Neighbourhood Policing Team Tel 101, ext.
430136

PCSO Dave Jones /Hayley Howe
Mobile 07966 197134

Non Emergency number for Essex police: 101
Emergency phone number in Europe 112

Village Hall Management

Temp. Bookings: Pam Hailes 07974913139

Enquiries: Dick Gould 01787 227834

Dog Training Val Sayer 01206 240328

Royal British Legion Val Sayer -"-

Borough Councillor: Peter Chillingworth, Oak
Farm, Vernons Road, Wakes Colne CO6 2AH
Tel. 01206 240230

County Councillor Lewis Barber 07876237137
cllr.lewis.barber@essex.gov.uk

Doorstep Deliveries: Byham 01787 372526
RCCE Oil buying scheme: representative Juliette
Shields, 01787 228511

Bures "Footprints-- carers and toddlers" 229052
Chappel School 01787 222296

Badger Hotline mob 07751572175

RSPCA enquiries line 0300 1234999

Silverline 0800 470 8090

Free 24 hour confidential helpline for older people
to combat loneliness and to give advice.

Mount Bures website: [http://
mountburesparishcouncil.org.uk/](http://mountburesparishcouncil.org.uk/)
Mount Bures Whatsapp group
ruthwoodman1@gmail.com

Citizens Advice Colchester 03444 770808

Braintree, Halstead & Witham

0344 499 4719

Sudbury 01787 321400 or 0300330151

Mt. Bures Footpath Society:



Chairman: Ian Woodman Linden House,
Mount Bures, CO8 5AJ 01787 227689

Email imwoodman@btinternet.com

Secretary: Lynn Baird Tel. 01787 228294
email lynnbaird999@gmail.com

Footpath Maintenance Officer:

Ian Andrewartha Tel 01787 227167

Further news see main section of The Mount

Pilates: Jane Read jane.elise78@gmail.com

• michelle.bass4@outlook.com
07904733122

Nature Conservation: George Millins 01787 374874
or mob 07534263620

Essex Wildlife Trust 01621 862960

Suffolk Wildlife Trust 01473 890089

Samaritans: 24 hour phone line 116123

Customer Services Colchester Council
01206 282700

Public Transport Traveline 08712002233

Hedingham/Chambers buses 03301 020801

Greater Anglia trains: 0845 600 7245

Nigel Taxis, Chappel 01206 240436

Sudbury Town Taxis 01787 377366

Bures Market on The Common

Every second Saturday of the month, 10am-1.00pm
01787 227781

Email fyshhousefarm@aol.com

Sudbury Farmers' Market Market Hill

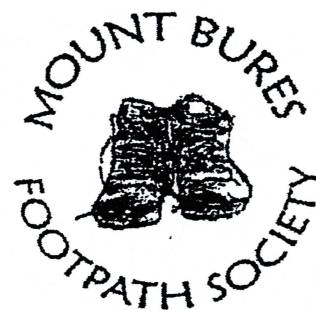
Every last Friday of month 9.30am - 2.00pm
07794 627973

Many thanks to contributors of articles,
ideas and photographs, to the helpers and sponsors of
The Mount. Please send articles, e-mails etc. to
Hildegard Hill, Two Hoots, Hall Road, Mount Bures,
CO8 5AS, Tel 01787 228429 by 15/11/21
hildegardandbuster@gmail.com

Title page photos courtesy Emma Barr/
Trevor Burch

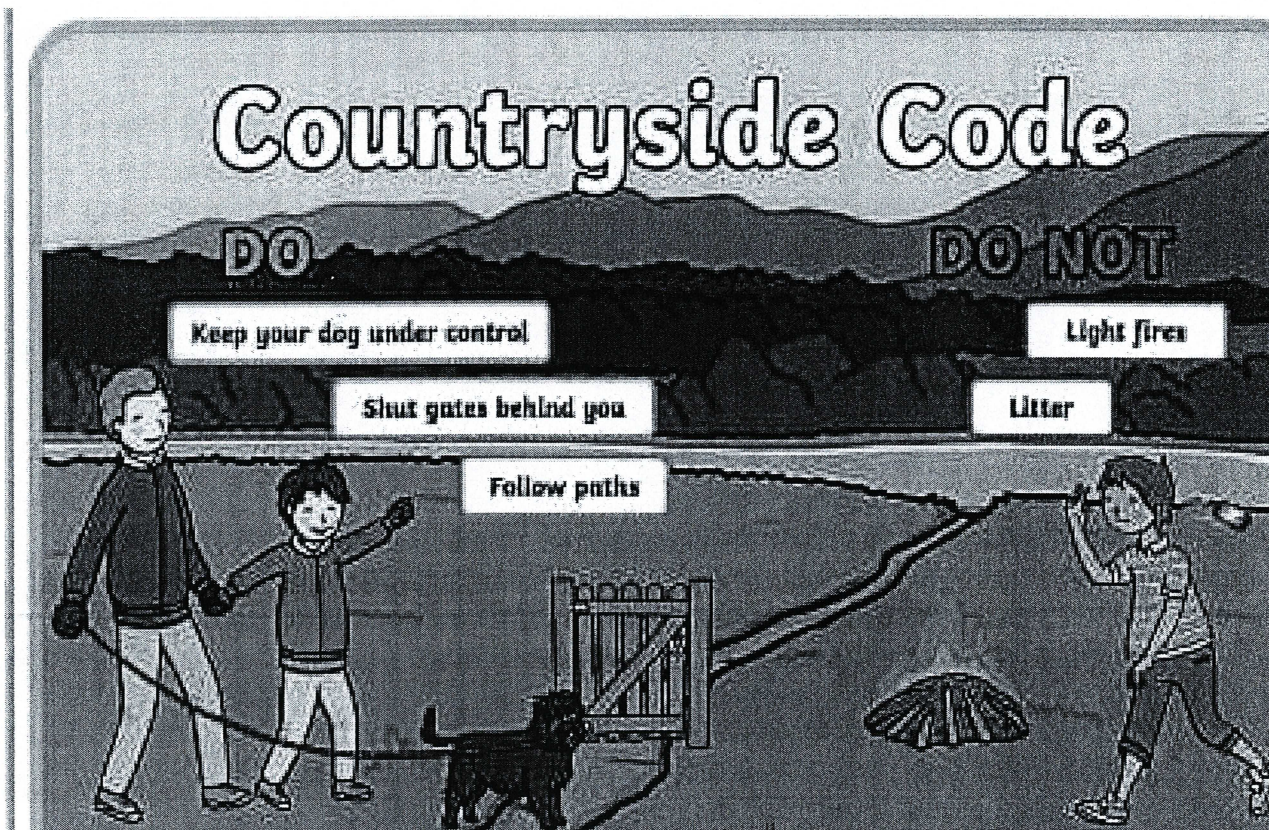
Mount Bures Footpath Society is Walking Again!

After a break because of Covid restrictions, Mount Bures Footpath Society is once again running regular monthly walks along the many lovely footpaths in our Parish.



Walks normally start from St John's Church, Mount Bures or another local meeting point and cover about 3 or 4 miles taking around 1 ½ to 2 hours with occasional longer walks. Walks are suitable for all age groups including children. Dogs are also very welcome.

Membership of the Society costs £1 for a full year (50p for children) which ensures that all walkers are covered by the Society's insurance. Walk details will be emailed to members and put on the Mount Bures Whatsapp group and the village noticeboards or can be obtained from Ian Woodman (01787 227689) or Lynn Baird (01787 228294).



Kick a poo out of the way, or pick a poo and take it to the nearest bin, Follow the example of Mount Bures Footpath Society: bring a carrier bag and pick up litter on every walk, recycle the recyclables and add the rest to your black bag rubbish. Many thanks!

Join us at **Foxearth Meadows**

for an **Evening Bat Walk**
(and Campfire bread-making)

Monday, 27 September 2021

This event is being held in memory of Sarah White, bat expert and canoeist, remembered with great affection for her generous sharing of knowledge and enthusiasm.

Meet at 5.30 pm to make campfire bread and engage in 'bat chat', then out and about for the bat walk, ending at 9.30 pm.

This event is free.

Donations are invited and will be divided equally between A Rocha UK and Essex Bat Group.

◆ Accompanied children aged 12 years and over are welcome.

◆ Please wear suitable outdoor footwear and warm clothing.

◆ Please bring a bat detector if you have one to add to those available on the night.

FOXEARTH MEADOWS NATURE RESERVE, FOXEARTH, CO10 7HZ

The reserve is about a mile north of Foxearth village, between the River Stour and the lane west of Constable's Farm.

If going along the Melford to Clare road (A1092), turn first left after GCB Cocoa (formerly Philips Avent), signposted 'Pentlow Road'. Then take the next left (signposted 'Liston') and the site is about 200 yards on the left.

BOOKING ESSENTIAL.

Contact Mark Prina, Reserve Manager
07548 209652 or mark.prina@arocha.org



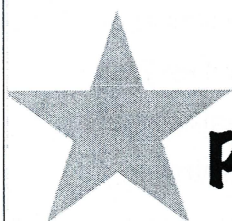
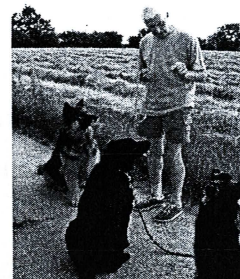
The Village Hall still wants people to come forward and help with the running of the Hall

- Person to take Hall bookings
- other committee members

If interested please contact Pam 01787 228326

Ongoing events: **Dog Training:** *Every Monday* starting at 7.00pm
For further details please phone Val 01206 240328

Yoga Tuesday 10.00 am– 11.30
Jan Mather 07944 314809



Pilates class

Every Wednesday
9.30-10.30am

£8 pay as you go

All ages, all abilities
Just bring a mat and water

Mount Bures Village Hall
Craig Lane
CO8 5AW

Contact for more info and to book your place!

michelle.bass4@outlook.com

07904 733122

Mount Bures Connections

Village Hall

Coffee cake and chat

Thursdays 10.00am—noon

Get garden waste bags and clear recycling bags
on presentation of online voucher.

The Mini Recycling Centre

(behind the Village Hall)

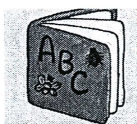
- 3 containers for clean glass bottles and jars
no ceramics, no Pyrex please
- 2 containers for clean food tins, drinks *cans*,
aerosols and aluminium foil.

Please flatten cans, no plastic bottles, no
plastic bags.

Thank you for keeping the site tidy!

Mobile Library

Parking near the phone box in
Craigs Lane: books, Cassettes,
DVDs etc.



visits now take place on

Tuesday 14.30—15.00
every three weeks

Next visits: 21 Sept, 12 Oct,
2 & 23 Nov, 14 Dec



A & B Fresh Fish

Van visiting Mount
Bures every Tuesday
approx. 8.00am,

parking in a private drive next to the Level
Crossing in Hall Road.

Tel. 07739739074

aandbfreshfish@tiscali.co.uk

News From the Town Hall

Since I last wrote in the spring, there have been some significant changes to report within Colchester Borough Council. Firstly, while the pandemic has eased and government restrictions have been lifted, government no longer allows virtual Council meetings where decisions are to be made, such as Full Council, Planning Committee and other such meetings and panels. The Council is conscious that many people still want to be well spaced to cut the risk of infection. So, arrangements are having to be made where members can meet face-to-face, with enough space for social distancing. Masks are still being worn around Council buildings until one sits down. Also, where all members, officers, and the public assemble, only the Moot Hall or Charter Hall are large enough to be used.

Following the elections in May, the administration running the Council has changed. Since 2008, the administration has been composed of Lib Dems, Labour and Independents. However, although the number of seats held by the parties did not change significantly at the recent election, the Conservatives with 23 seats out of 51 and Independents with 3 decided to form a coalition with a majority of one, leaving Lib Dems, Labour and 2 Greens in opposition. The new administration has not introduced any radical changes so far and decisions made previously have mainly been followed through. As new decisions and work arises, we may soon be able to notice a different political slant, but the move to a carbon-free Council will continue.

Assuming the Environment Bill currently going through Parliament receives Royal Assent in the Autumn, we could see significant changes to what and how waste and recycling is handled around the country. All Councils will in future have to collect the full range of materials and do so in a similar fashion. Colchester does currently collect most material, but others vary considerably. It follows also that there will have to be a better national industry to handle all recyclable material. However, we in Colchester will have to use wheelie bins to collect most of our material. In addition, there is also to be a national scheme for returnable glass bottles where a deposit will be refunded. So, over the next 2 /3 years we will probably see these changes introduced.

Peter Chillingworth

September 2021

Mount Bures Community Whatsapp Group

This whatsapp group is for Mount Bures (and nearby) folk to keep in touch and pass on any helpful local information, and all residents are welcome to join it. To use it you need to have the whatsapp app on a smartphone, (or if you do not have a smartphone but do have a tablet plus a mobile phone number whatsapp can be used on your tablet instead.)

To join, ask a friendly neighbour as they may be able to add you in, or contact Ruth Woodman via ruthwoodman1@gmail.com with the mobile phone number you use for whatsapp and she can add you to the group. NB for those unfamiliar with whatsapp, my tip is to turn notifications to silent so you do not get pings every time a message comes in!

Wildlife friendly gardens/communities



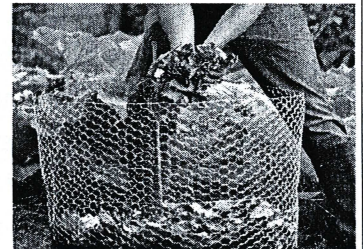
Autumn brings us many challenges, nature is preparing to go to sleep, animals go into hibernation, and leaves are starting to drop. After a long summer some of us are “yearning” to trim hedges, clear up, cut and strim to our hearts delight. However, let’s not overdo but “underdo” it, let nature do its bit and leave us to get on with more important things, such as sitting by the pond watching wildlife, harvesting, making hideaways for nocturnal creatures, habitat piles in sunny position and bug hotels.

This photo, kindly supplied by the children, shows a newt from Cody and Tia’s **wildlife pond** . With habitat loss and fragmentation due to increased development and faster road traffic, wildlife ponds such as Cody and Tia’s are becoming increasingly important in the preservation of amphibians. In order to survive, amphibians need to migrate from land habitats to pond habitats. Newts can travel up to 500m, toads up to 2 km! So if we have several ponds in our area we need to maintain the land habitats between these ponds with these lovely creatures in mind.

More information on wildlife pond creation and maintenance go to the Wildlife Trust website, [actions/how-build-pond](http://www.wildlifetrusts.org/actions/how-build-pond)

Autumn Leaves are perfect for hibernating and other creatures seeking protection. Apart from amphibians, hedgehogs love leaf piles to snooze in. Rake leaves into piles in a secluded area, not to be touched till late spring.

More leaves can be gathered up for **leaf mould** which is one of the best peat substitutes. Step 1: rake them up, Step 2 put in either wire enclosure (chicken wire is perfect) or black bin bags with plenty of holes to let air water and minibeasts in to help with **decomposition**. My preferred option are old, holey gravel bags , because they are stronger and can be turned to aid more even decomp. Step 3 water if dry. The whole process should take about 2 years. Sift through wire mesh, to use less- decomposed leaves for starting a new batch. Perfect. Smells gorgeous!



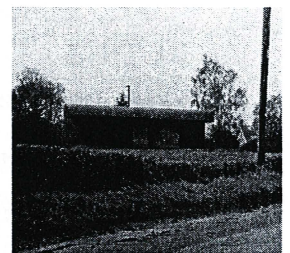
“Hedgewoes”:

Too many hedges have been grubbed out in the past, and many of the ones left are given a bad deal, by cutting during the nesting season and flailing too severely thus depriving birds small mammals and insects of both habitat and food.



Hedges should be at least 1 metre thick at the bottom, narrower at the top, as many berries as possible left on.

By just cutting the road side for vision and the top, the field side could be left uncut, or cut less severely and less often.



Trees in the hedgerows when left to flourish are a great asset. Rather than just “planting trees” we should leave trees to mature rather than cutting them down. One mature tree is worth a thousand little saplings in terms of carbon reduction.

More wildlife photos and stories of attempts/achievements urgently needed! Please send to me by 15/11! hildegardandbuster@gmail.com

Autumn Security Considerations

As darker nights roll in heralding the approach of winter here are a few things that you can consider and include in your general maintenance at this time of year that may make your home less attractive to thieves.


- Put that light on! - 31/10/21 the clocks go back, check and reset the time of your timer plugs, lights, and other security devices. **Remember to a thief a house in darkness is empty.** Some of the things you do to create the illusion you are in when your home is unoccupied are: - lights on in rooms that you would normally occupy, TV simulators, a doorbell that you can answer remotely on your smartphone.
- External lighting and CCTV - Make sure that external lighting and CCTV is working and clean.
- Hedges, Trees and plants - A consideration when gardening – most **thieves like to work unobserved.** Have your plants or shrubs grown and are they now obstructing CCTV or lighting, does it now prevent neighbours and passer-by's from seeing your frontage? If so a spot of pruning would be advisable, to the front it is recommended to keep hedges and shrubs to about 4' (1.2m) and with trees prune lower branches where suitable to allow that visibility of your property.
- Sheds and gates - keep them closed and locked when not in use, review and maintain the locks as required. Alarms on sheds and outbuildings are a good idea.
- Property marking - tools and lawn mowers going away for the winter, if you have not done it already make a note of the model and serial numbers and consider a property marking product.
- Heating Oil - with the value of fuel it is worth considering its security. In the more isolated parts of the countryside it is primarily domestic properties that have been targeted by the heating oil thieves, but we have also seen such thefts at farms and other businesses. There are several security devices available that will protect your fuel supplies - details of which can be found via your fuel supplier or local plumber's merchant. One such system is Tank Commander www.commandersecurities.co.uk which has "Secured by Design" accreditation <https://www.securedbydesign.com/> . Products like this will detect a dramatic drop in fuel and notify you by phone and/or audible alarm. There are also other similar security products that can add onto an existing intruder alarm system, whilst others may protect the filler cap and there are of course the conventional locks. Another consideration would be concealing it with landscaping and spiky planting around the tank, restricting access to it with gates or fencing, and where possible locating the tank under lighting in view of lived in rooms within the house.

If you would like further advice regarding security please look at the Essex Police website www.essex.police.uk/cp/crime-prevention/ and <https://www.securedbydesign.com/> .

Naturally we also ask you to report any unusual activity to police in an emergency on 999 or after the event on 101 or "Do it online" www.essex.police.uk/do-it-online/report-a-crime/ or to Crimestoppers anonymously on 0800 555 111.

Types of plastic

The following table illustrates the most common types of plastics used, their applications and the symbol which is often used to identify them on forms of plastic packaging.

Polymer Types	Examples of applications	Symbol	
Polyethylene Terephthalate	Fizzy drink and water bottles. Salad trays.	 PET null	OK KERBSIDE
High Density Polyethylene	Milk bottles, bleach, cleaners and most shampoo bottles.	 HDPE null	OK ICERB
Polyvinyl Chloride	Pipes, fittings, window and door frames (rigid PVC). Thermal insulation (PVC foam) and automotive parts.	 PVC null	—
Low Density Polyethylene	Carrier bags, bin liners and packaging films.	 LDPE null	—
Polypropylene	Margarine tubs, microwaveable meal trays, also produced as fibres and filaments for carpets, wall coverings and vehicle upholstery.	 PP null	OK ICERBSIDE
Polystyrene	Yoghurt pots, foam hamburger boxes and egg cartons, plastic cutlery, protective packaging for electronic goods and toys. Insulating material in the building and construction industry.	 PS null	—
Unallocated References	Any other plastics that do not fall into any of the above categories - for example polycarbonate which is often used in glazing for the aircraft industry	 null	—

If you are having difficulty identifying your plastic waste please contact:

- The supplier of the material.
- Call the WRAP helpline on 0808 100 2040 or [email](#)
- Or visit Recoup at www.recoup.org

Related pages

[Mixed plastics packaging](#)

Related sites

[What happens to the plastic you recycle at home?](#)

RELATED CATEGORIES

Materials and products

- [Plastics](#)



Richard Fordham

Tree Surgeons



Rumps Barn
Dowling Road
Mount Bures
Suffolk
CO8 5AY

Tel: 01787 227713
01787 229933
Mobile: 07860 510517

Free Estimates

- Tree Surgery
- Tree Felling
- Pruning of Trees, Hedges and Shrubs
- Removal of Dead / Dying / Dangerous Trees
- Stump Grinding / Removal
- Hedge Management
- Wood Chippings Delivered Locally
- Logs Delivered Locally
- Reliable and Courteous Staff

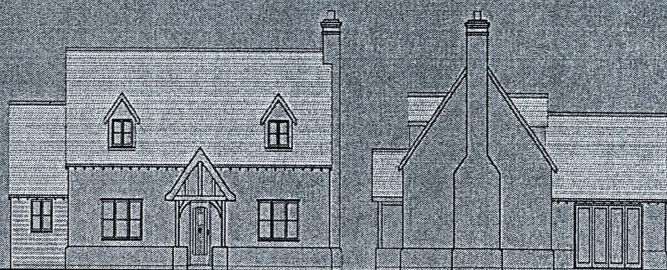


Fully Insured - £10 Million Insurance cover

MANDY SEXTON

Chartered Architect

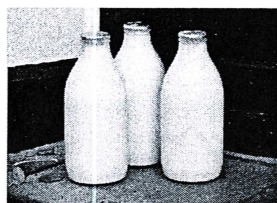
Professional advice & design services
for domestic extensions, garages and new build.
Drawings prepared for planning, listed building consent, conservation
area & building regulation applications.



Tel: 07729 236253

mandymsexton@hotmail.co.uk

Less Plastic, More Planet: a Touch of Glass milk in returnable glass bottles



Regular delivery of milk including
organic, fruit juices, bread, eggs,
biscuits, cream, etc.

H. Byham & Son Ltd
01787 372526

Sudbury Office Supplies

Edgworth Road, Sudbury
Suffolk

01787 374331

Commercial Stationery
Computer Supplies, Copying
Service

Email: [sales@
sudburyofficesupplies.co.uk](mailto:sales@sudburyofficesupplies.co.uk)

Bures Surgery Tel. 01787 227529

Reception/Dispensary hours

Monday 8.30—1.00, 2.00—6.30

Tue/Fri 8.30—1.00; Wed/Thu 8.30-1.00, 2.00-6.00

Surgeries as normal. Follow instructions re social
Distancing.

Repeat prescriptions: drop in through letter box on
your right. (or in the door) or order repeat prescription
on-line, follow steps on Hardwicke house website

Bures Post Office Tel. 01787 227 252

9.00am—1.00 pm & 2.00pm—5.30pm

Early closing Wednesday & Saturday
12.30pm

Fish and Chips van

On Mondays 4.00pm till 8.00pm
Opposite Eight Bells Pub Bures
tel. 07377815446

The Village Deli Bridge Street, Bures

Freshly made sandwiches and baguettes
Sausage rolls, pastries and pies

01787 228032

Wakes Colne Village shop and P.O.

Nearest stockist of Colchester Borough
compostable **Food waste caddy liners**

01787 222449

Cuckoo Hill Workshop

Character handcrafted chopping boards, cheeseboards and serving platters, also garden furniture and
memorial benches. Made at our Suffolk workshop from ethically sourced local English hardwoods.
www.cuckoohillworkshop.com Email cuckoohillworkshop@gmail.com Tel 07951609927