

October 2024

TEAM WORK

Following reports of neglected and dead horses and a firearms risk at a farm in Chelmsford, the Rural Engagement Team joined forces with the RSPCA and various police units to execute a warrant.

Officers from our firearms team and local community policing attended the farm with the RSPCA to gain access to the land and assess the horses.



RET provided drone support, which proved vital establishing how many horses were on site and where, and specialist wildlife knowledge from our force Wildlife Crime Officer, PC Jed Raven.

Approximately 79 neglected horses were found. Horses

were being not fed or watered properly or receiving veterinary attention.

Police also found a number of dogs which were seized for rehoming.

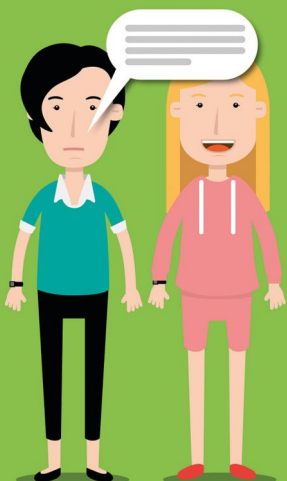
Sadly, a number of horses were found to be beyond help and had to be humanely put down with a vet present.

This was one of the worst scenes of neglect the team have encountered. The scale of the site and number of



animals meant it took 3 days to round up all the horses.

Two people have been arrested.



Domestic abuse is all about control. If you notice that someone seems to be controlled in all areas of their life, it could be a sign they are being abused.

SETDAB.org

Now there's a quick online alternative to calling 101 or visiting a police station:
DIGITAL 101



Do it online at:
essex.police.uk

**IN AN EMERGENCY
ALWAYS CALL 999**

HARE COURSERS CAUGHT

RET have been busy responding to reports of hare coursing and poaching.

Hare coursing is down 23% compared to the previous 12 months.

RET continue to work closely with surrounding forces to tackle this cruel sport across the Eastern region.

On one day in Uttlesford we caught four people suspected of hare coursing at two separate incidents.



In both cases, suspects had travelled to Essex from Kent.

Three Community Protection Warnings were issued and one car was seized. Enquiries continue.

RET seized several vehicles suspected to have been used by coursers after they were either abandoned or became stuck in fields.



So far this year we have received 133 reports of hare coursing. This compares to 173 in the previous 12 months.

Sgt Felton said “We have been active and tenacious looking for hare coursers and following intelligence.

We rely on the public to tell us if they see hare coursing or suspicious activity. That way, we can get a good picture of where it is happening and direct our resources to that area.”

If you see hare coursing happening, call 999. If you have intelligence about coursing please report it to us on the Essex Police website, or by calling 101. You can also email RET directly at Rural.Engagement.Team@essex.police.uk



MARKING SUCCESS

We have been out across Essex marking property with our free Selecta DNA marking kits, funded from seized proceeds of crime.

The kits, which can mark up to 50 items, contain a paint on solution which police can use to identify the lawful owner.

The team have attended numerous farms and



rural business to mark expensive equipment.

The kits also contain window stickers and signs which owners can use to deter thefts.

If you are a rural business owner and are interested in marking your machinery or plant

STUDENT ENGAGEMENT

PC Luke Jones ran three successful engagement events aimed at students in Chelmsford.

Events were held at both Chelmsford College sites, and Writtle College.

Focusing on rural crime, advice was given out on a range of rural issues.



We were impressed by the number of students and staff who attended, and the questions they asked.

COMMUNITY INPUT

RET were delighted to give a presentation to the community in Great Bentley, Tendring.

We had been invited to talk about our role leading on rural issues. We were also able to give residents a picture of rural crime in their area and answer questions.

The team attend meetings, community groups, local shows and schools throughout the year raising awareness of rural crime.

Please email us to attend your event.



STOLEN VEHICLES

The team had success recovering stolen vehicles this month.

A Polaris ATV was stolen in Mountnessing was located by RET in under 12hrs. The vehicle, which had a tracker fitted was believed to be located hidden in a very rural area. RET recovered the vehicle back to its grateful owner.



We also recovered a caravan stolen from South Essex in under 24hrs.



INVESTMENT IN RET

Two new officers have joined RET.

PC Luke Jones and Dane Wyatt both have many years policing experience, including on community teams.

Both officers bring additional skills to the team, and will be a huge boost to RET's capabilities. Welcome!



Our final new vehicle, an unmarked Ford Ranger 4x4 is now in build with our fleet services and will be delivered to the team in November.

This represents the final stage of a complete overhaul of RET's vehicle fleet and gives us the specialist vehicles we need to perform our unique role.

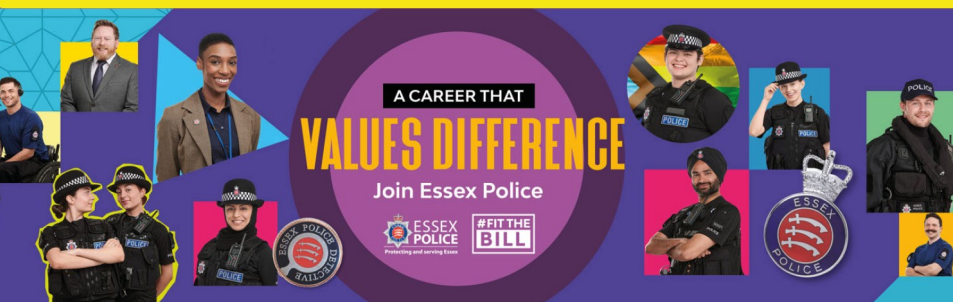


Digital 101

You can report non-emergency crime by calling **101** or by using **Digital 101**, our quick and easy to use online service that's available at any time.



Digital 101 is available on the Essex Police website: [essex.police.uk](https://www.essex.police.uk)



If you, or anyone you know, is interested in protecting and serving Essex, you can follow us on social media, or search **#FitTheBill**