

RET SPECIALS TOP TEAM

Four Special Constables attached to the Rural Engagement Team have won the Essex Police Special Constabulary Team of the year award.

engagement events and carried out many hours of rural patrols.

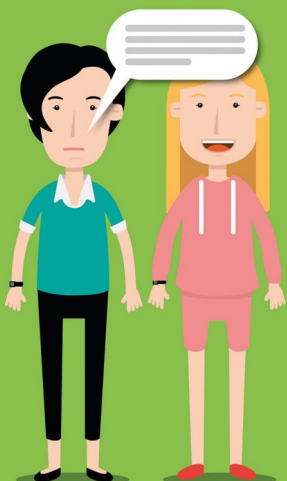
Our specials are very much a full part of the team and without their valuable support we couldn't attend as many events across the county or be as visible as we are.



Specials Sergeant Raffell and Constables Lawrence, Basham and Atkinson volunteer their time to help RET.

Special Constables have full police powers. Officers who work with RET have additional training and skills to enable them to work with the team and deal with rural crime.

Over the past year they have provided support at



Domestic abuse is all about control. If you notice that someone seems to be controlled in all areas of their life, it could be a sign they are being abused.

SETDAB.org

Now there's a quick online alternative to calling 101 or visiting a police station:
DIGITAL 101



Do it online at:
essex.police.uk

**IN AN EMERGENCY
ALWAYS CALL 999**

ENGAGEMENT FOCUS

The team have been busy throughout May attending engagement events across Essex.

We had a stand at the All About Dogs Show in Hylands Park, Chelmsford alongside our Essex Dog Watch colleagues and local officers.

We gave out advice on keeping your dog safe, offered free microchip scanning and checking and pushed our message around responsible dog ownership and live stock attacks.



We also had a high profile presence at the Essex Young Farmers Show in Chelmsford.



The team talked to the public about rural crime, especially wildlife matters and theft of plant such as quad bikes and GPS units.

We also exhibited at the Clacton Police Station open day. Hundreds of visitors visited our stand and were shown equipment used by the team as well as one of our 4x4 vehicles.



Local events haven't been neglected either.

The team attended the Stondon Massey Village Fete in Brentwood.



If you would like the team to attend your event email us at 74973@essex.police.uk

STOLEN SUCCESS

RET have continued to recover stolen plant and vehicles from across Essex.

In April over £150,000 worth of construction equipment was recovered.

A Hydraulic breaker worth £40,000 was found at one location, and £100,000 worth of plant at another.

RET have been working closely with the National Construction and Agricultural Theft Team (NCATT) to track down stolen items and tackle the organised crime gangs behind the thefts.



FORCEWIDE SPEED CHECKS

RET lead the force on rural road safety.

The team have been out across Essex in May conducting speed checks in response to requests from Parish Clerks and local policing teams.

Checks have been carried out in Southend, Thurrock, Rochford, Brentwood, Dunmow and Ingatestone.

We have also taken delivery of a new speed camera. TruCam takes photos of speeding cars and automatically issues tickets through the post without the need to stop motorists. This means we can carry out a large number of checks at a location.



NEW CAR FOR RET

The team took delivery of our latest new vehicle, a Volvo XC60 AWD.

The car joins our fleet of 4x4's and enables us to safely travel long distances across Essex and drive on rough tracks and terrain at incidents.

The new car is fitted with front and rear camera's, ANPR technology, tracker to locate stolen cars, a matrix board to display messages and space to carry specialist equipment such as microchip scanners, data tag readers and drone equipment.



TILBURY PORT VISIT

Insp Jacobs, Sgt Felton and Sgt Brady visited the Port of Tilbury Police in May.

The team have been carrying out checks on construction and agricultural plant leaving the UK through Essex ports and we are keen to include Tilbury in this operation.



The visit included a tour of the port with their Chief of Police, as well as a tour of a visiting cruise ship.

It was fascinating to see the huge range of work carried out by the ports police. The team have full police powers within the port and are one of 12 ports police forces in the UK.

COUNTRY PARK PATROLS

We have been working with council Park Rangers to tackle Anti Social Behaviour in some of our country parks.

We had a meeting with managers at Bowers Marsh RSPB reserve in Pitsea following off-road bikes accessing the reserve.

In Colchester we carried out joint patrols of Hill Fields with staff following drinking, fires and damage within the park.

Also in Colchester we are working with staff to tackle issue at Iron Latch woods and the nearby Essex Wildlife Trust nature reserve.

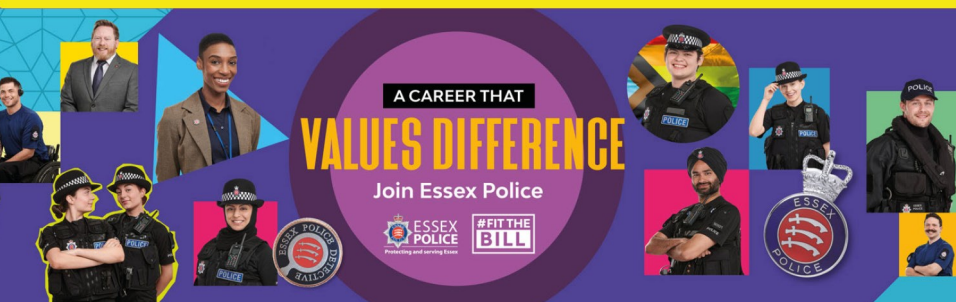


Digital 101

You can report non-emergency crime by calling **101** or by using **Digital 101**, our quick and easy to use online service that's available at any time.



Digital 101 is available on the Essex Police website: [essex.police.uk](https://www.essex.police.uk)



If you, or anyone you know, is interested in protecting and serving Essex, you can follow us on social media, or search **#FitTheBill**