



Leaden Reading

Volume 1, Issue No. 38

Dec 2020

Road Works everywhere. Traffic controls, one way working etc. etc.

So what's going on?

Two years ago we were one of the first villages in the area to get Fibre Optic cabling. This pushed up the speed of the signals by 1000% plus, but the cable only went to the boxes in the street. Now Essex Superfast are rolling out "Fibre to your Home"



During the current pandemic we have all watched news programs where the interviewee keeps breaking up, loss of sound or picture. This is due to the lack of volume of signals over old copper wires. Before the last upgrade my broadband speed was way below 10 megabytes. Now it's above 50mg. but in a few months we could be looking at speeds well into the hundreds.

No more buffering of downloads! No more waiting for files to load etc.

Essex County Council have raised funds from the Government, Europe and other organisations especially set up to support the Government's objectives to put in full Fibre Networks to residents and businesses in the Countryside.

For more information go to the website of Superfast Essex.

www.superfastessex.com

So what happens next? Well someone knows but they're not telling, Yet!

If you look outside your home on the footpath you should see a black cover on a junction box. This contains a fibre cable for each home, which goes to a green junction box. Here it connects to a bigger capacity fibre wire which then goes to the two boxes in Dunmow Road and then on to the telephone exchange.

The connection to the box outside your house has still to be done and will cause more disruption and may incur a charge. But will there be a fee to install? how much will it cost? if you pay for fibre already do you pay more? These are still questions still to be answered.

The one thing which is clear is it will improve broadband in out village and get it into the 21st Century.

Inside this Issue

Who's who?	2
Village Hall /Uttlesford	3
Village Hall/ Lottery	4
Bowls Club/2021 Census	5
Scouts, Brownies	6
Uttlesford DC	7
Frontline	8
Recycling	9
Xmas Bin Collections	10
Uttlesford/Roding School	11
Cloghams /Warm Homes	12
Citizens Advice	13
Uttlesford DC	14
RWG / Websites	15
Dogs/Mobile Library	16
Essex Police	17
Business's	18
Parish Council	19/21
NHS/Parish Council	22
Frontline	23
Citizens Advice-Redundancy	24
Kemi Badenoch MP /Saffron Screen	25
Church/Book Village Hall	26
Autumn in Leaden Roding	28
Village—Keep Safe	29

**POWER CUT?
CALL 105**

Or call us
24 hours a day on
0800 31 63 105

Want to Save Money on your Heating Oil?
See page 18

17/12/20
Uttlesford still in Tier 2
Check Government Website for information



DISCLAIMER: Every effort is made to ensure accuracy of the material published, the publisher/editor can accept no responsibility for the veracity of claims made by contributors in either editorial or advertising content

There are lots of people involved in various organisations throughout the village. Most give their time for free, helping to organize weekly gatherings, meetings and events.

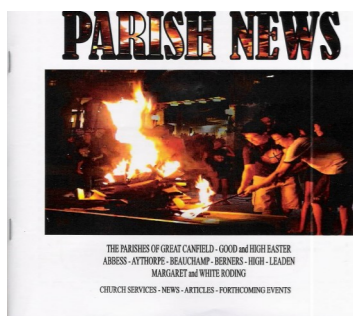
All organizations would love to see some new faces. Yes it might be a bit scary first time, but a first phone call and chat will break the ice and ensure that the welcome mat is there to greet you.

SO GIVE ONE A TRY.

Thanks to all contributors to the magazine.

MORE REQUIRED

Last date for contributions for March by 10th Feb. Please.



Contact Phil Sutterby to order your copies of the Parish Magazine.

£12.00 for 12 mths - 12 issues (6xChurch)

Want to make a comment on the Leaden Reading? Want to make a contribution? Would you like to see something different? If no-one tells me, I don't know! Please e-mail : leadenreading@yahoo.co.uk

The Who's Who of the Village

(Tel no 01279 unless stated)

Parish Council Chairman:	Dave Clayden	876735
Parish Council Clerk	Terry Bell	876045
UDC & ECC Councilor	Susan Barker	01245 231250
Village Hall Bookings:	Ivy Clayden	876568
Village Hall Chairman	Dave Clayden	876735
Village Social Club	Dave Clayden	876735
Parish News Rep.	Terry Bell	876045
Parish News Contributions	www.tenparishnews@gmail.com	
Rodings Primary School	Colin Raraty (Headmaster)	876288
Fire Liaison Officer	Mark Nevill	876384
Roothing Quilters	Joan Clarke	01245 231559
Cloghams Cricket Club	Dave Bardell	877969
	Ray Bell	876045
The Art Group	Dorothy Saville	01245 231701
Roding Brownies	Hilary Freeman	876638
	Terry Bell	876045
Rainbows	Steph Green	01245 231362
Rodings Horticultural Society	Derek Saville	01245 231701
Rodings Walking Group	Phil Sutterby	876274
Bowls Club	Ivy Clayden	876568
Church Events	David Tregunno	876601
St Michael's Church	Rev'd Robert Stone	07726 719288
Friendship Club	Jackie Eldridge	876350
COVID VOLUNTEERS	JACKIE DENTON	876320

Watch out for Events Happening in the monthly Parish News, the Village Notice Board or The Village Hall Notice Board

Kemi Badenock M.P.
 contact details for future reference.
 TEL: 020 7219 5214
 FAX: 020 7219 5600
 E-MAIL: kemi.badenock.mp@parliament.uk
 WEB SITE: www.kemibadenock.net

See her website for surgery dates
 See page 24 for more details




WANT TO WIN PRIZES FOR THE BEST DRESSED HOUSE?

The Parish Council and Village Hall/Social Club are sponsoring the best decorated houses in the village. There are 2 main prizes of £25 plus extra prizes for others. The winners will be judged by a team of judges who will travel around the village looking at the decorations put up and can be seen from the road. (See Village Hall Facebook page for more details).

Also visit Uttlesford DC website for details of another competition. Send in a photo of the outside of your house fully inluminated to the address on the website and see if you win.



reduce the risks the males wait at the edge of the web until the female has moulted into a mature form when its jaws are still soft and then rush in to mate, some are still unlucky and don't survive the mating process!!
 On that happy thought this brings me to the end of my reports for 2020 and I hope that 2021 will be a better year for all of us together with the local wildlife. I send you all my very best wishes for a Merry Christmas and a happy healthy New Year.

Ken Pavitt
 December 2020



A field of Rape Seed



A Buckeye Chestnut



Teasel



Burdock Plant



Inkcap Mushroom



Horse Mushroom

Can you tell the difference between a House Martin, Swallow or Swift?



Swallow

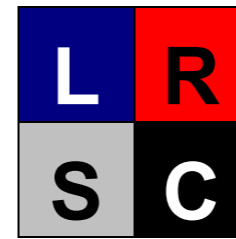
The most obvious thing that distinguishes swallows is their deeply forked tails. These tail streamers are shorter in younger birds though, and not always easy to see in the glare of the sun. So, what else can we look out for? Well, they have pale whitish undersides and are uniformly dark blue-black above, and they have a rufous (reddish) chin and throat.

House Martin

House martins are smaller than swallows. They have only a shallow forked tail and lack tail streamers. Their body is all white beneath with bright white chin and throat. The white patch on their rump on their otherwise blue-black back and head is a great way to single them out in a mixed flock with swallows. Their wings are short and pointed and wider than a swallow's, and their bodies less slender – they are more torpedo than an arrow!

Swift

Swifts are larger than swallows and a uniform sooty brown colour, but often look black against a bright sky. They spend half of the year on the wing moving between their wintering and breeding grounds, and they are supremely well adapted to this lifestyle. Their long narrow wings give them a scythe-like appearance in the air, with their diminutive bodies seemingly hanging from a single aerofoil.



What's on in the Village Hall



The Village Hall remains closed for all activities.

For future information look on-line at the Parish Council website (e-voice.org.uk/leadenroding/) or Leaden Roding Village Hall Facebook page. (see below)

Via Google ...Leaden Roding Parish Council (this will give you the link)

Via Facebook... Leaden Roding Village Hall



YOUR HIGH STREET DELIVERED

A new virtual high street that allows local people to support independent shops has gone live. Residents anywhere in the district can now use Click It Local Uttlesford, so can buy from any of the shops that have signed up and have their shopping delivered on the same day.

How it works

Go online to clickitlocal.co.uk/uttlesford and enter your postcode

- Browse the local shops and purchase products in much the same way as walking down the high street
- The goods are then delivered to you
- Delivery costs are £3 for an order from one shop and £1 per each additional shop
- For orders placed before 1pm the items will be received the same day between 4pm-7pm. Any order placed after will be delivered the following day

Head to the website to explore the amazing local shops – there's still plenty of time to do some Christmas shopping!

HIRERS OF THE VILLAGE HALL

Since lockdown, where bookings of the hall were not allowed, it has given an opportunity for the village hall to be thoroughly cleaned. Once the hiring of the hall is allowed again we politely ask hirers to leave the hall in the state in which they found it.

[You may be charged for any damage or for any additional cleaning or repairs](#)



OUR PRIZE
IS
STRUCTURE
CHANGING

More chances to WIN from 17 August 2019

- WIN cash prizes from £25 up to the £25,000 Jackpot
- The more numbers you match, the more you WIN!
- We still receive 50p from every ticket sold via our lottery page – a further 10p goes to other local causes
- Support us from just £1 a week and help make a real difference to our community

60%
goes to good causes

£25,000
Jackpot!

To start supporting visit:

www.essexlottery.co.uk

and search for: **Leaden Roding**

Players must be 16 years and over and physically based in the UK



Contact the Leaden Reading by e-mail with all your news, what's on, what's happened
leadenreading@yahoo.co.uk or to 19 Lordswood View
Want a copy of a photo? Send your request to the above contact address.

SUPPORT YOUR VILLAGE HALL CHARITY

Now you can support the village hall and you could win yourself £25,000!

The Essex Lottery has recently been launched and if you go to the "Leaden Village Hall Trust" page, from the home page, a proportion of your entry fee will go towards the upkeep and improvement of the village hall.

Draws are still taking place.

PLEASE NOTE: IF YOU ENTER, GO VIA THE LEADEN VILLAGE HALL TRUST PAGE.

www.essexlottery.co.uk

A BIG "THANK YOU" to those who already support the lottery.

ALL FOR £1 MIN. A WEEK.

THERE'S BEEN WINNERS IN THE VILLAGE.

Autumn in Leaden Roding

The Weather has been mixed so far this Autumn with some warm sunny days together with periods of torrential rain and high winds! We have even had a few hard frosts. The meadow behind Bridge Houses was flooded on 22 October and the water has been across the roads in places as the dry earth has struggled to absorb the volume of falling rain. There were even larger floods over the weekend of 14th November with geese and ducks enjoying the temporary lakes.

The harvest was gathered in early and the fields resown, some of the Oil Seed Rape has grown so well that the fields were in full bloom again in October. The Autumn leaves have been particularly striking this year with a vivid display of reds, oranges and yellows, I understand this is due to the favourable weather conditions earlier this year. It's been a really good year for the Rose Hips and Haws and all types of Berries, Apples and Plums with plenty of food available for the local wildlife.

Whilst walking around Cloghams cricket field I came across a Buckeye Chestnut from the tree that's been there for years. The Buckeye Chestnut belongs to the same family as the Horse Chestnut, also known as the Conker, but these are unrelated to the true Chestnuts that get roasted at Christmas. The Buckeye and Horse Chestnut trees bear similar fruits but the Horse Chestnuts are larger with a prickly casing. As I've been walking around I have seen a larger number of Teasels which will continue to stand tall and proud throughout the winter months. In the Summer the spiky heads are covered by small purple flowers which are very popular with bees and these turn into the oval spiky seeds heads providing Autumn feed for birds especially Gold Finches.

Thistles and Burdocks have also thrived this year. The leaves and nectar of thistles provide a good food source for many insects such as the caterpillars of the Painted Lady Butterfly and some birds, including the Gold Finch, feast on the seeds. These plants are all members of the Daisy family and seem to grow in any environment. The most easily recognisable thistle is the Spear Thistle which is the emblem of Scotland. It has leaves shaped like spears with a sharp spine at the tip and elongated stems with purple flowers erupting out of round green spiky heads. The Marsh Thistle is also common with a cluster of purple or white flowering heads. Other varieties are the Creeping Thistle, Meadow Thistle, Musk Thistle and Slender Thistle. Unlike the thistles, the Burdock has rounder larger leaves and it produces small thistle like flowers. It is easily recognised in Autumn as it's numerous hooked spines or bracts that are the irritating mass that cling to animal fur or clothing as a means of distributing their seeds.

Whilst on holiday in Devon my daughter came across a brightly coloured Toadstool. She took pictures and was keen to identify the variety. Despite looking at books and on the internet she is unable to positively identify it but thinks it most resembles a mature Fly Agaric (Amanita Muscaria) Toadstool. These are extremely toxic and the young toadstools are the bright red with white spots classically portrayed as the toadstools of children's storybooks. This is another of Nature's warnings that bright coloured things are not necessarily good to eat! The local mushrooms are also benefitting from the warm and wet weather conditions and we have seen several varieties including the Shaggy Inkcap and a huge Horse Mushroom growing on the verge along Nether Street in Abbess Roding.

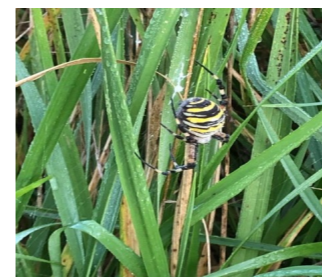


The garden birds will soon start to return to our gardens as the weather turns colder. If you have them, please ensure that you thoroughly clean out your bird feeders before filling up again, especially the Niger Seed feeders as these can contain mites which are harmful to the Finches. I had the pleasure of watching a family of House Martins swooping over meadows after the rain in early October. They were gorging on the plentiful supply of insects in preparation of the long flight back to Africa where they will spend the Winter months. The Swallows and Swifts have also departed on their long flights back to their winter feeding grounds. I saw a flock of a couple of maybe a hundred Fieldfares at Great Apps in early November. They are wintering visiting birds together with the RedWing which is another member of the Thrush family.

I was thrilled to see six Cormorants flying over Cloghams cricket ground early one morning. Herons and Egrets have also been spotted along the River and in meadows after the recent flooding and a Jay darting along the hedges along the High Easter Road. Red Kites, Buzzards and Kestrels have all been seen flying and hovering over the local fields on numerous occasions. I even caught sight of a Woodcock flying over a ploughed field in late November, these are increasingly a rare bird.

The annual Fallow Deer rut has started, I had a herd of twelve dart across the road in front of me at Leaden Bridge. There has been evidence of deer laying under one of the benches at the cricket ground. Grey Squirrels seem to be everywhere and with a plentiful supply of nuts this year they have been busy burying their food stores for the coming months. I have been told that a fox has been spotted around Holloway Crescent. They are becoming a more

common sight again with one seen crossing the road at Leaden Bridge in broad daylight. We are seeing a few more rabbits along the verges and the odd hare in the fields. The Butterflies have mostly disappeared for the Winter, but I spotted a Peacock Butterfly on a warm day in Mid October and a Painted Lady on 12th November. In mid October I saw something I had never seen before, my daughter took a picture and after some research we discovered that it was a Wasp Spider. This is a large spider and as its name suggests looks just like a common wasp which helps protect it from predators. It is a recent arrival from the continent and is currently found in the south of England but is spreading northwards. It is the females that look like wasps and the males are smaller and pale brown. They build large orb webs in grasslands and attach their silk egg sacs to the grasses. The web has a wide white zig-zag running through the middle. This is one species of spider where the male can be eaten after mating. To



Christmas Services at Leaden Roding Church

13th December

11.00am Morning Worship(Martin Lockwood)

20th December

6.00pm Christmas Story Service (Rev Robert Stone)

24th December

2.00—5.00pm Crib Experience (Local Stewards)

CHRISTMAS DAY SERVICES AT 10.00AM

Abbess Roding Church & Good Easter

Yours truly,
Rev'd Robert Stone,
Priest-in-Charge,
The Rodings, Easters and Great Canfield
email: robertstone1965@gmail.com



St Michaels and All Angels
Leaden Roding



**HIRE LEADEN RODING VILLAGE HALL FOR YOUR PARTIES, EVENTS, MEETINGS ETC
USE OF FULLY STOCKED KITCHEN &
IF REQUIRED YOU CAN HAVE THE BAR OPEN (FOR AN ADDITIONAL CHARGE OF £25.00)**

**PRICES: Weekdays £8.50 per hour
Weekends £9.00 per hour**

Saturday Evenings 7.00pm until midnight £90.00

SPEAK TO IVY 01279 876568 TO BOOK—CLOSED AT PRESENT



Leaden Roding Bowls Club

The club is open to all so if you fancy a game come along to the club night on Friday evenings from 8pm. Friendly matches take place every couple of weeks and anyone of any skill level is welcome to take part. Most evening matches also includes a supper, raffle and a bar at some venues.



More details from Ivy Clayden.
01279 876568

Obviously the club is closed at this time but all are very welcome to join us when we are back up and running.

Last March the Bowling Green was due to be refurbished after it had been badly damaged by the hot summer in 2019 and the invasion of moss. Unfortunately the lockdown meant that the work had to be postponed but work was carried out in September and the bowling green is beginning to look healthy again.

All matches have been postponed until it is deemed Safe to Play

**census
2021**

Be a part of Census 2021

Census day is 21 March 2021.

By taking part and encouraging others to do the same, you'll help make sure your community gets the services it needs.



Find out more at www.census.gov.uk

Follow @Census2021

Office for National Statistics

www.census.gov.uk

A4GIP1

1st Moreton and Fyfield Scout Group

The Beaver Scout Colony - 5 and three quarters to 8 years old-

Tuesday 6.00pm to 7.15pm

ALL MEETINGS HAVE NOW BEEN CANCELLED UNTIL FURTHER NOTICE.

Mary Bacon – Chairman 1st Moreton & Fyfield Scout Group
01277899052, 07554933563, marychristinebacon@aol.com



RODINGS BROWNIES

We have been through a very strange year at Brownies this year. When lockdown began in March Brownies meetings were cancelled, in July there was hope that outside meetings could reconvene but without knowing what the weather would be like from on Monday to another we decided against this option. By September we really wanted our meetings to go ahead again so we decided to give virtual meetings a try. After the first couple of meetings we got into a routine with a challenge for the Brownies at the start of the meeting, then a craft (see below photo of some of the crafts we made) followed by a game at the end of the meeting. We even managed to learn a couple of songs which was tricky as it is quite difficult to sing in unison on Zoom! After the first half term we decided to go ahead with a virtual Christmas party for the last meeting before Christmas, traditionally we join up with Rodings Rainbows for the party and decided we were not going to let a pandemic stop our joint party even though it had to be virtual this year. Our party went really well, we played Christmas Bingo, Snowman Dice game and made a Snowman Christmas decoration. Towards the end of the party we heard bells in the distance and all of a sudden Father Christmas appeared on Zoom! (Photo below).



He said he was a little surprised that the girls were all in 'little boxes' but soon got used to the new way of visiting us, he even pulled a present out of his bag for every girl and, as if by magic, the girls found their presents in their hands! We look forward to carrying on with our Zoom meetings after Christmas and perhaps by springtime we might be back with face to face meetings again in the village hall. First Rodings Brownies wish everybody a very Happy Christmas and a Healthy and Safe New Year.

KEMI BADENOCH MP

Serving the people of Saffron Walden, Great Dunmow, Stansted, Thaxted, Rural Chelmsford and Surrounding Areas

CONTACT KEMI

Westminster Office
Kemi Badenoch MP
Member of Parliament for Saffron Walden
House of Commons
LONDON
SW1A 0AA

Tel: 0207 219 1943
W: kemibadenoch.org.uk
E: kemi.badenoch.mp@parliament.uk
F: fb.com/kemibadenoch

I hold regular advice surgeries offering help and support to local people.
To arrange an appointment, please call on:
0207 219 1943

Kemi Badenoch MP,
Saffron Walden

Constituency

Write: House of Commons,
London, SW1A 0AA

Email: kemi.badenoch.mp@parliament.uk

Tel: 0207 219 1943

Website : www.kemi.badenoch.org.uk



KEEPING YOU SAFE

This is what we're doing to ensure you have a safe & enjoyable experience at Saffron Screen:

- SOCIAL DISTANCING**
Significantly reduced capacity with empty seats between bookings.
- CLEANING**
Regular and enhanced cleaning. Ventilation system turned up to high capacity.
- ONE WAY**
One way system in place. Please respect social distancing guidelines.
- PAYMENT**
Advance ticket purchases only. Contactless payment preferred.
- TRAINING**
Trained staff wearing appropriate protective clothing.
- REFRESHMENTS**
Limited refreshments, subject to change. Check website for updates.
- HAND SANITISER**
Hand sanitiser at key locations.
- TEMPERATURE CHECKS**
Temperature checks on arrival for customers, volunteers and staff.

www.saffronscreen.com

Saffron Screen reopens this weekend with an exciting and magical new retelling of [A Christmas Carol](#) directed by Andy Serkis. Then [War Horse](#) from the National Theatre makes a welcome return alongside the highly anticipated [Little Mix Concert!](#)

Or why not take a trip to 1940s Hollywood with [Mank](#) starring Gary Oldham. "It's crafted with the kind of monochromatic elegance that begs to be soaked up on the big screen" Time out ✨

Our Monday night film is [The Mole Agent](#), which see a private investigator hire Sergio, an 83-year-old man, to spy on a care home. It's a stylish combination of an observational documentary and a spy movie, with wonderfully watchable characters, which becomes a meditation on compassion, ageing and loneliness.
5th Dec 2020

Redundancy: Key things to know

citizens
advice

Redundancy is a fair reason to dismiss

Furlough has not changed normal employment law; your employer can still make you redundant even if you are furloughed

You must have two years continuous service to qualify for a statutory redundancy payment

If you are made redundant there are statutory minimum notice periods, depending on how long you have worked for your employer

If you are pregnant you have extra protections

Your employer may make you redundant because the business has closed down; the area of the business where you work closes down or because there is a reduced need for employees to do a particular type of work.

The legal rules surrounding redundancy are complex but, in general terms, the following should take place:

Before redundancy you should have been consulted.

You should be given notice.

All holidays you are owed should be paid.

The company should have considered whether there was an alternative to redundancy. Is there another job in the firm you could do?

The process of choosing who is going to be made redundant should be fair. If the company decided to choose you on a discriminatory basis, then your redundancy is unfair, giving you grounds to complain.

If more than 20 staff are to be made redundant, the law says there should be a period of collective consultation between the employer and 'appropriate' employee representatives (usually a union).

Voluntary redundancy?

You should think carefully about how voluntary redundancy will affect any money you are entitled to. Ask your employer about the redundancy package. Sometimes employers offer incentives for taking voluntary redundancy, such as extra redundancy pay or not having to work your notice period.

Claiming benefits

You might be able to claim benefits such as Universal Credit after taking voluntary redundancy. Turn to Us is a useful website to check your benefit entitlement www.turn2us.org.uk or contact Uttlesford Citizens Advice on 01799 618840 or email bureau@uttlesfordcab.cabnet.org.uk

Planning for after redundancy

If you've worked for your employer for 2 years at the end of your notice period, you're entitled to reasonable time off to apply for jobs or training, paid at your normal hourly rate, but only for up to 40% of a week's work.

Contact your local Job Centre Plus and ask for their Rapid Response Service - You can use the service during your notice period and for up to 13 weeks after you have been made redundant.

The new 'Job Help' website set up by the Government has information to help you in your job search as well as thousands of jobs from registered employers <https://jobhelp.campaign.gov.uk/job-search-ideas/>

If you are thinking about changing careers you may find the national careers service helpful <https://nationalcareers.service.gov.uk/>

You can find details of local services which can help you get into the workplace, including adult education opportunities and specialised support for people with mental health issues on www.uttlesfordfrontline.org.uk

More information

GOV.UK has more info on redundancy rights and help to find work.

Citizens Advice citizensadvice.org.uk/work/leaving-a-job/

Money Saving Expert moneysavingexpert.com/family/redundancy-help/

Uttlesford Citizens Advice. Barnards Yard, CB11 4EB

Tel: 01799 618840

Website: uttlesfordcab.org.uk

Email: bureau@uttlesfordcab.cabnet.org.uk (Monday to Friday 9.30 to 3.30)



UPDATE ON OUR SERVICES

Uttlesford stays in Tier 2. All of Hertfordshire & other districts of Essex in Tier 3

The government has announced major changes to areas in the tiering system on 17th December which sees our village in Tier 2 .

(See the Gov.uk website for the list of restrictions in each tier which are subject to change depending on Government decisions)

Community Response

The Uttlesford Community Response Hub continues to help people in the community who need it.

If you're someone who needs some extra support during the lockdown or you're looking to help the community, please get in touch.

The number **03333 408 218** is available Monday to Friday, 9am to 4pm.

Email: communityresponse@uttlesford.gov.uk.



REMEMBERANCE DAY 11TH NOVEMBER 2020

After the many good comments last year the Brownies again decorated the village with over 100 poppies of varying sizes which were made by themselves to remember the many that served and died in conflicts over the years. Again many people have expressed their appreciation.





I can't find a service?

We are working hard to identify as many local health and wellbeing services as possible – but if something is missing or you can't find a service you need – please get in touch via webchat or email us at info@frontlineuk.org.uk.

If I request a call back or I'm referred through the system – when should I expect to be contacted?

We ask services to contact people within 3 working days, but we hope it will be quicker than that. If we see that you haven't been contacted within 6 working days we will contact the service on your behalf and chase them up.

Are my details on the system safe?

We had a lot of help from Information Assurance officers in the NHS, EPUT and Essex County Council to ensure the system is as secure as we can make it. We only ever collect information from you to make a good referral, we only hold your data for a maximum of 90 days, and we use the same level as encryption as on-line banking services. If you want a copy of any information held on the system under your name, please make a 'Subject Access Request' to info@frontlineuk.org.uk.

Who runs Frontline?

Frontline was designed by Uttlesford Citizens Advice, but it is really a large community project where organisations and services sign up to improve people's knowledge and access to local services. Frontline in west Essex is funded by Essex County Council and the NHS's West Essex Clinical Commissioning Group. Uttlesford's Council for Voluntary Services is helping to run the services.

I want to give some feedback on a local service - how would I do this?

Great! Good and bad feedback is really important to understand and improve local services. It can also be used to help funding arguments and identify gaps in services. We collect feedback in various ways – you can give a service a thumbs up or down through the website or via our mobile app. If you have been referred by an organisation, and agree to give service feedback, we may contact you via email or over the phone.

Can I contact someone about Frontline?

Please send all questions, complaints or comments to info@frontlineuk.org.uk or call 01799 618 855. Emails will be responded to within 10 days.

What if I have a family member or know someone who would find Frontline helpful, but they have no access to the internet?

If you know of someone who cannot access the internet and they need help finding a local service - Healthwatch Essex is available from 9am to 5pm Monday to Friday on 0300 500 1895 (calls to this number are charged at your local rate).

How do I get a new service on the Frontline Library?

If you run a service in West Essex that you think will be appropriate for Frontline, please click on the sign in/ register button on our homepage. After you register your email, please go to the provider 'about' section and read up on the questions and answers section...we think we have covered most things.

CONTACT DETAILS

The Old Police Station

Great Dunmow

CM6 1DQ

info@frontlineuk.org.uk

01799 618 855 (Monday—Friday 9am—5pm)



HOW WE CAN HELP.

WE CAN REFER YOU TO THE FOLLOW ORGANISATIONS AND MORE



Parenting Support Project



Adult Learning



Activity groups for people with Dementia or Memory Problems



Feeling Good, Caring Well

Action for Family Carers
Young Adult Carers (ages 16 - 24)



Build confidence & feel less isolated

Adult Mental Health Wellbeing Team



Free Home Water Efficiency Check



Home Help Service



Help, advice and guidance for carers and sufferers



My Weight Matters –How to loose weight
NHS—Health Checks



Help with clothing and equipment for your baby



Little Goslings Children's Centre

Spangles Children's Centre



British Lung Foundation
Breathe Easy

AND LOTS MORE ORGANISATIONS Tel: 0300 500 1895 E-M

Check if you need medical help

NHS 111 has an online coronavirus service that can tell you if you need medical help and advise you what to do.

Use this service if:

- you think you might have coronavirus in the last 14 days you've been to a country or area with a high risk of coronavirus – see our [coronavirus advice for travellers](#) ON NHS.uk
- you've been in close contact with someone with coronavirus



Use the 111 coronavirus service DO NOT GO TO YOUR DOCTORS

More information

[GOV.uk: coronavirus action plan](#)

[GOV.uk: information on coronavirus and the situation in the UK](#)

[NHS.uk](#) England: coronavirus information for health professionals

PARISH COUNCIL NOTICE

Recently there have been many complaints of dog fouling on footpaths and pavements in the village. Most residents do clean up after their dogs but the few who do not, give others a bad name.

PLEASE CLEAN UP AFTER YOUR DOG!

Anybody witnessing people not clearing up should report this to the Animal Warden at Uttlesford District Council (Tel: 01799 510510) and the offender will be fined!

VILLAGE HALL GROUNDS

THE FOOTPATH AND THE GRASS IN THE VILLAGE HALL IS USED REGULARLY BY CHILDREN.

THE GROUNDS ARE COVERED BY CCTV. THESE CAMERAS HAVE RECENTLY BEEN UPDATED AND ARE VERY ACCURATE. ANYBODY NOT CLEANING UP AFTER THEIR DOGS WILL BE BREAKING THE LAW AND WILL BE REPORTED TO THE UTTLESFORD ANIMAL WARDEN WHICH COULD LEAD TO PROSECUTION.



PARISH COUNCIL NOTICE

It has come to the attention of the Parish Council that green waste is being deposited in ditches within the village. Residents are asked to use the monthly Green Waste Skip for all green waste. Alternatively residents can apply to Uttlesford for a green waste bin for their own use at a fee of £40 per year.

Garden Bin Collections

The individual Green Waste Bin Collection continues. If you would like a bin for your home go to the Uttlesford D C. website. Bin collections are on Green Bin Days

Green Waste collections from your home costs £40 for a full year.

(See the Uttlesford DC website for an application form. Bins are collected every two weeks.)



For all Bin Collections, please put bins out by 7am



Website to visit for more information:

www.loveessex.org

Win a recyclable coffee cup

Change to cloth nappies and claim £30 reward

Donate your old cloths instead of throwing them away.

FREEGLE is a site where you can get FREE things

PLUS LOTS MORE INFORMATION ON RECYCLING YOU DIDN'T KNOW





Your Guide to Christmas and New Year Waste and Recycling Collections

Please be aware that there will be no collections the week commencing 22 December.

For the week commencing 29 December, some collections will be a day later than usual.

Normal Collection Day		Revised Collection Day	Which bins?
Tuesday 29 December	Changes to	No Change	
Wednesday 30 December	Changes to	No Change	
Thursday 31 December	Changes to	No Change	
Friday 1 January	Changes to	Saturday 2 January	

Extra recycling can be placed at the side of your bin for collection on recycling week. Place this in white or clear bags or cardboard boxes, no black bin liners please. Your recycling bin collections will commence from Tuesday 12 January 2020.

Don't let your recycling go to waste!

Please don't contaminate your recycling. It's not just about putting the wrong thing in the wrong bin, contamination also occurs when unclean objects are mixed with clean recycling. Make sure to clean and sort your waste correctly. Common contaminants include black bags, nappies, food waste and textiles. For more information about what can be recycled, visit <https://www.uttlesford.gov.uk/recycleit>



Land adjacent to Chalet Bungalow, Stortford Road – Erection of 1 detached one and a half storey dwelling associated drainage and external works – *conditional approval*.

2 Leaden Dene, Dunmow Road – Rear and side extension – *conditional approval*.

Between meetings the following decision after appeal to the Secretary of State has been received: Old Rectory, Stortford Road – proposed detached garage – *appeal dismissed*

Footpaths:

P. Sutterby reported that at this time footpaths in the village are all in good condition.

Any footpath problems can be reported by contacting Phil Sutterby or by telephoning 0845 6037631 or by emailing www.essex.gov.uk/highways.

Any other business:

1. Cllr Barker stated that due to the high amount of flooding on Essex roads she is lobbying the Cabinet Member for Highways to see if flooding can be reported directly instead of online form filling.
2. The clerk will report a damaged traffic sign outside Walnut Tree Cottage, Dunmow Road. Wires going through the post appear to be visible and Parish Councillors are concerned for the safety of pedestrians walking past.
3. The clerk reported she received an email who she thinks was from a motorist driving through the village stating concern re ongoing roadworks operatives driving unsafely whilst manoeuvring their vehicles in the course of their work. The clerk replied stating that the roadworks has been instigated by BT Openreach and although the Parish Council has no input into who undertakes the work, she will bring this to the attention of BT Openreach for them to pass on to the contractors.
4. The clerk made Parish Councillors aware that will be a nationwide Census in 2021.
5. Various other documents were circulated for Councillors' attention by email outside the meeting.

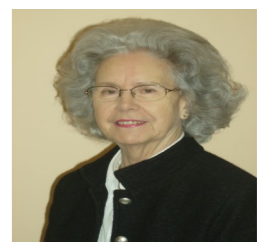
Date of the next meeting Tuesday 12th January 2021 using the Zoom platform.

There being no further business the meeting closed at 9.05pm.

Parish Councillor Mrs Gay Essex

We are very sad to have received the resignation of Parish Councillor Gay Essex recently. Gay has decided to move away from the village, nearer to her daughter. She has been on the Parish Council for over twenty years and her work in the role of Parish Councillor for the village will be sorely missed. She was also secretary to St Michael's church and for many years organised the annual flower festival in the church and I am sure her presence will be missed there too. In 2010 Gay and her late husband Ken received a Community Achievement award for their work in supporting local projects in the village. Ken also did much for the good of the village, he was one of the people instrumental in obtaining a lottery grant for the building of the extension to the village hall and designed our village sign and flag. Gay has been a good friend to me over the years and has been very supportive to me in my role as Parish Clerk and she will be sorely missed. We wish her lots of happiness in her new home.

Terry Bell
Parish Clerk



- 30 mph sign beside village hall – not yet repaired – Highways appear to think this has been repaired, the clerk will report again, this has again been reported, Cllr Barker will report too.
- Fallen Highways sign approaching the roundabout on Chelmsford Road – this has not been repaired and the original sign seems to have disappeared, the clerk will report again, this has again been reported, Cllr Barker will report too.
- The clerk has requested that Highways examine all signage in the village as lots of signs appear to be in need of repair or replacement
- Flooding at Wrens Park – after recent heavy rain, with no flooding at Wrens Park, the repair has seemed to work. The resident from Wrens Park was informed by Highways that the problem could recur in the future if the ditch opposite the property was not regularly cleared. Between meetings the clerk had a site meeting with the resident of Wrens Park and the owner of the ditch and it was agreed that the ditch would be cleared yearly in the autumn. As it seems to be clear at this time it will not be cleared again until next autumn but if there were any concerns before then, the owner will clear it sooner
- A resident who conducted a survey re speeding in the summer contacted the clerk for advice on who to send the findings. The clerk informed her that although protocol suggests it might be useful to give the Parish Council details of the findings, she could send it straight to Highways if she preferred. The clerk has not heard any information since, and as time has elapsed, it is assumed that the resident sent the findings to Highways directly.
- The clerk reported that as the COVID-19 pandemic is continuing to cause concern the December issue of the Leaden Reading will be published on the website only again this quarter, for health and safety reasons. It has been advertised that if residents require a paper copy, they are welcome to contact the editor and he will print and deliver one to them.
- Between meetings the clerk noticed the small village sign at Leaden Hill is rusting and in need of repair. She has reported this to Highways.
- After reporting building waste left on the pavement by Windmill Café, the majority has now been cleared. A large bag of sand is still present, the clerk will report to Uttlesford.
- The clerk read a thank you letter from Roding Schools and a note in the school newsletter thanking the Parish Council for the donation made.
- After advice from Cllr Barker the clerk will contact Uttlesford stating they do not wish to enter into costly legal actions to remove fencing at Chalks Green but will leave it to Uttlesford as guardians of the Green to act as necessary to find a solution to the issues raised.

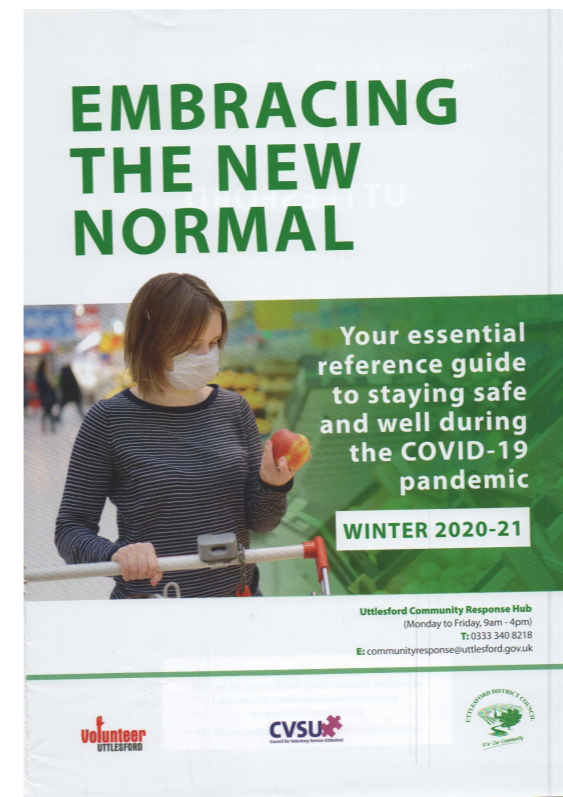
Finance: The clerk was given authority to pay:

- £222.00 to MD Landscapes – grass cutting (inv 543)
- £52.80 to Rural Community Council for Essex – annual subscription
- £675.00 to Mrs. T E Bell – clerks ½ year salary

Planning Applications:

The following applications were circulated between meetings: Land at adjacent to Chalet Bungalow, Stortford Road – construction of a pair of link-detached dwellings – *Parish Councillors are unsure if this application is in place of the application just approved below or is another application making 3 new dwellings on the site. They object to 3 dwellings on the site due to over development and have concerns with the amount of traffic which will enter and leave the A1060 if too many properties on the site.*

Between meetings the following decisions have been received: Burniere, High Easter Road – proposed demolition of existing garage and erection of replacement garage – *conditional approval.*



The booklet was sent to all properties in Uttlesford by the council.

It contains many tips on how to keep safe and healthy.

It also has the contact details of many organisations and council departments which can offer you help during the Pandemic. If you have mislaid it, contact Uttlesford D.C. for a further copy or apply on the Uttlesford website.



RODINGS SCHOOL

Tel: 01279 876288

Www.rodingsprimaryschool.co.uk

School breaks up on Friday 18th December and returns on the 4th January 2021



CHRISTMAS WAVES A MAGIC WAND OVER THIS WORLD
MERRY CHRISTMAS!



CLOGHAMS CRICKET CLUB

The end of October saw 20 cricketers in 20 vehicles drove up the M11/A11 to Wensum Valley Golf Course and Hotel, Norwich for 3 days in our annual weekend away for 3 rounds of golf (trophy below)

It was at a time when the restrictions had eased, although the hotel rules were quite stringent. All were very aware of keeping distance etc.

The weather was good for the time of year, with only a sprinkle of rain one day. There was two courses to play, one was an open park location which we played twice. Although we didn't get much rain the second course made up for it as it was a series of old gravel pits, which were now lakes. One of the groups lost 20 balls on one round of 18 holes.

The winners of the Trophy for this year were: Alex Baker, Richard Dunmow, Barry Howland & Chris Davies



Strangest shot, Richard Dunmow hit a shot into the trees and got it stuck about 7ft high. His recovery shot, from the tree got him back on the fairway with his golf club surviving the rescue of the ball.



Do you restrict your use of power because you are worried about the bills?

Getting into arrears with your energy supplier or being forced to cut back your spending on food or other essentials can be bad for your physical, financial and emotional wellbeing.

Warm Homes Essex is a new service set up by Citizens Advice to provide practical advice and support to people who are finding it hard to heat their homes.

Our experienced, professional advisers can help in a number of different ways:

Making sure you are receiving all the benefits you are entitled to

Helping you with fuel debt if you have already fallen to arrears (in some cases we can apply to trusts and foundations to help pay these off – giving you a fresh start)

Energy saving around the home

Switching suppliers – working out which energy tariff is the best one for you

Helping you to join an oil club

Access to grants for energy saving improvements – we can help you find the best scheme and help you apply

Access to emergency fuel payments

For more information speak to Kaleigh, our specialist energy adviser, on 01799 618858 or email warm-homes@uttlesfordcab.cabnet.org.uk

YOUR PARISH COUNCIL & COUNCILLORS

Clerk for the Parish Council - Terry Bell Tel. 01279 876045 e-mail terrybell19@yahoo.co.uk



Dave Clayden
Chairman
Tel.876735

Minutes of Parish Council Meeting held on Wednesday 1 st December 2020 using the Zoom Platform

Present: D.Clayden, P.Sutterby, J.McIntock, M.Whitehead, Mrs Bush Cllr Barker and 3 members of the public.

Between meetings Mrs Gay Essex sent a letter of resignation as she has moved away from the village. The Chairman proposed a vote of thanks for all the hard work she had put in for the good of Leaden Roding during her 20 plus years on the Parish Council. All Parish Councillors and the clerk wish her well in her new home.

Between meetings the clerk informed Uttlesford of the resignation and notices from Uttlesford and Leaden Roding Parish Council were put up on the notice board and village website informing residents of the resignation and advertising a vacancy. Once the clerk hears from Uttlesford that a co-option can be made she will arrange interviews for applicants.

Minutes of the last meeting of 30 th September 2020 were agreed. As this was a virtual meeting the minutes will be signed by the Chairman at a later date.

Public questions/concerns addressed to the Parish Council

A resident expressed concerns re speeding in the village, particularly in the area by Rodings School and asked if the Parish Council have a short- and long-term strategy on speeding. Cllr Barker stated that most Essex villages share this concern. She stated that as Leaden Roding is situated on two priority routes – A1060 and B184 – Essex Highways will not agree to reduce the speed limit below 30mph. She suggested there are other measures which could be used to slow traffic including another zebra crossing and more signage. She stated rumble strips cannot be installed within 300 yards of a property due to noise. The clerk stated that in September 2018 Highways performed a speed survey on the B184 and their findings proved that speeding was an issue and looked into the possibility of installing a VAS sign but due to lack of space they could not find a suitable position to install it so instead erected more road signs in the area. The clerk stated that over the last 20 years progress the Parish Council have been actively requesting traffic calming measures in the village and a lot of improvement has been made but the process is slow as our village is one of many who are requesting these measures and Highways measure the cost and benefit to each village before agreeing any improvements. Cllr Barker stated it was very unlikely that a static speeding camera could be erected which would be subject to an Essex County Council decision. The resident asked if the Parish Council has looked into the possibility of setting up a Community Speed Watch team in the village, the clerk stated that there is a lack of interest in resident participation in community activities in the village but if anybody was willing to join a Speed Watch team the Parish Council were in agreement that they would support it and make some funds available if necessary. The resident stated he was prepared to look into trying to find some volunteers. It was suggested that hedges within the village were, in places, growing over some traffic signs. Cllr Barker will request that the Essex Rangers cut them back. It was mentioned that a survey asking for views re speeding had been instigated by another resident without the knowledge or input of the Parish Council earlier in the year and the results have not been shared with the Parish Council (see details below).



Jim McLintock-
Tel.876011



Mike Whitehead
Tel.876414



Phil Sutterby
Tel.876274

Clerk's report.

- A1060 speed limit – the clerk reported that it appears that the 30mph extension at Leaden Bridge is imminent as a Public Notice has now been given. Cllr Barker stated that there had been an objection made during the consultation time and this extension is now awaiting a Cabinet Member's approval.

- Drainage problems on Stortford Road – during the recent bad weather the drainage problem opposite King William House has recurred and flooding between the church and the village hall has worsened considerably. The clerk has reported both of these problems again.



Ann Bush
Tel: 877819

LOCAL BUSINESS PROFILES

C.J.FLOORING

(Leaden Roding)

Carpets, Vinyls etc supplied & fitted

Domestic & contract work

No job too small

Samples to your door

Free estimates

01279 876291

07976 814682



harrington brothers
Tarmacadam, Ground works, Soft play and Resin Specialist
James Harrington
Phone: 0843 557 5333 / 07974766108
Website: Harringtonbrothersltd.co.uk
Email: Harringtonbrotherscontractors@gmail.com

SMITHS
PLUMBING & HEATING LIMITED
Office: 01279 861370 Mobile: 07785 545591
Email: office@smithslimited.co.uk
13 Twyford Business Centre, London Road, Bishops Stortford, Hertfordshire, CM23 3YT
www.smithsplumbingandheating.com
VAT Reg. No. 872756191 Corgi Reg. No. 163190 Company No. 5092899

Rodings Oil Syndicate

There is a £10.00 per year membership fee, which -due to a lower oil price -will be recouped on your first order.
Only Kerosene/28sec/domestic oil (the most used) is supplied and a minimum order of 500 litres is required.
At 2nd July the price was 48.35p per litre
WANT TO SAVE £££'s ON FUEL BILLS?

SCRIMSHAWS
WINDOW CLEANING

windowcleaner@scrimshaw.me.uk

Or ring

MATT : 07546 518488 for a quote

CHK
ABS
TR

SERVICING - MOT REPAIRS
VEHICLE DIAGNOSTICS + CAMBELTS
ALL TYPES OF VEHICLE WORK UNDERTAKEN

JK MOTOR SERVICES
PREVIOUSLY KNOWN AS 'WINDMILL GARAGE'
is moving from Aythorpe Roding to
Kingstons Farm, Matching Lane, White Roding CM6 1RP
07921 088919 01279 876297

We are actively delivering to your neighbours this winter... What about you?

active FUELS LTD.
Tel: 01376 335001

www.mid-esssexpestcontrol.co.uk

Mid-Essex Pest Control
Wasps/Rats/Mice £45 - no VAT

Fast, Efficient Service
info@mid-esssexpestcontrol.co.uk
NPTA, RSPH Level 2 Qualified
£5m Public Liability Insurance
Alan 01279 876277
07785 765069

Advertise your Business or Event in the Leaden Reading
E-Mail: leadenreading@yahoo.co.uk for details



Barnards Yard
Saffron Walden
Essex CB11 4EB
Suite 8, The Chestnuts
4 Stortford Road
Great Dunmow
Essex CM6 1DA
Advice 01799 618840

Help to Claim in Dunmow

From Monday 8th July our office in Dunmow will be open on Mondays for anyone who needs help to make a Universal Credit claim.

We have public access computers available and trained staff on hand to offer help and advice - just drop in between 9.30 and 3.30.

Find us at The Chestnuts, Suite 8, 4 Stortford Road, CM6 1DA.

We will continue to open as normal on Tuesday, Wednesday

and Thursday to offer general advice.

Please call 01799 618840 to book an appointment.

If you need information about local support or self refer to local health and well being services visit www.uttlesfordfrontline.org.uk

For urgent matters relating to housing, speak to Uttlesford District Council on 01799 510510.

If you are worried about debt - speak to your creditors and tell them that you are seeking advice and then contact us.

For urgent court matters call or email the Court.

For urgent advice on employment issues, ACAS can help <https://www.acas.org.uk/>

We will be recording the information you provide in our client management system. For details on how we use your data, please see our [privacy policy](#) or speak to one of our volunteers when they call back.

OUR OFFICE IS CURRENTLY CLOSED SO PLEASE TELEPHONE US

01799 618840





For information on council services, go to: www.uttlesford.gov.uk/coronavirus

We are supporting our high street shops in Uttlesford as they begin to reopen from today by working with local business groups, town and parish councils and other partners to create a safe shopping experience in the district.



Over the next couple of weeks, visitors may start to see some physical changes in the town centres such as floor markings and signage on how to shop safely.

Please support our retailers by shopping local and safely – maintain social distancing at all times and follow the signage that is in place to protect you and others.

Handwashing still plays a key role in protecting yourself and others from coronavirus.

- Wash your hands more often
- Use soap and water for 20 seconds
Or use hand sanitiser

Five ways [Uttlesford Citizens Advice](#) can support you during the coronavirus pandemic:

- **Telephone advice** – Advice on benefit entitlements, money worries, employment rights, housing concerns or relationship challenges
- **Help to claim** – Help to claim Universal Credit including support to overcome any technical barriers to making your claim
- **Disability benefits** – Help to complete disability benefit forms and advice on appeals
- **Access to local support** – Foodbank referrals, access to emergency funds and information about other local support services

Listening Line – for a friendly ear or chat if you are feeling worried, overwhelmed or just want to vent!
Call 01799 618841 or email chat@uttlesfordcab.cabnet.org.uk

Staff and volunteers are available Monday to Friday from 9.30am to 3.30pm. Call 01799 618840 or email bureau@uttlesfordcab.cabnet.org.uk.



citizens advice Uttlesford
We're here for everyone to support you through the Coronavirus Pandemic



For crimes and suspicious activity NOW phone	999
For non-urgent incidents and reporting a crime that has already happened	101
Alternatively you can report non-urgent incidents or suspicious activity and crimes on-line at https://www.essex.police.uk/do-it-online/	
To give information anonymously phone CRIMESTOPPERS	0800 555 111
or report it online at www.crimestoppers-uk.org	
<i>The information you provide is very important to us so please make sure that we can use it effectively, by reporting it correctly through the proper channels above. Thank you.</i>	

Essex Police
Fraud Alert System

17

27th November 2020

HMRC Self Assessment Scams

Self assessment customers are being warned to be vigilant following reports of a number of HMRC scams ahead of the return deadline on 31st January 2021.

Scams use the deadline to panic customers into sharing personal or financial details. Criminals contact customer via SMS text message, email or phone calls pretending to be HMRC offering financial help, tax rebates or refunds.

Customers are also warned to be aware of fake websites charging for government services.

Ways to spot a tax scam

It could be a scam if it:

- is unexpected
- offers a refund, tax rebate or grant
- asks for personal information like bank details
- is threatening
- tells you to transfer money.

You can report suspicious activity to HMRC at phishing@hmrc.gov.uk and texts to 60599.

For more information or to report phone scams online go to GOV.UK.

Beware of phishing scams and copycat websites when doing your tax return

gov.uk/self-assessment

Keep up to date with fraud and do even more Online at essex.police.uk

CALL ESSEX POLICE

101

IN AN EMERGENCY ALWAYS CALL 999



Failure to clean up after your dog could result in a £1000 fine

To report incidents of dog fouling call the council's Customer Service Centre on 01799 510510

Alternatively, fill in an online form at www.uttlesford.gov.uk/animalfoulingreport

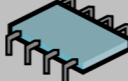
*This does not include recycling bins
It is preferable to take it home and use your black lidded bin





Microchipping and Dog Tags - Are you aware?


You are probably aware that UK Law states that all dogs must be microchipped however, are you aware that the law also states that all dogs must have a tag. The tag must include your surname, full address and telephone number. The number of animal wardens is reducing and this additional information means that if somebody finds your dog they will know where to return it straight away.

Please also remember that if you have a change of address to make sure that you update the microchip details immediately and also make sure that you purchase a new tag.



DOG BINS ARE PROVIDED AROUND THE VILLAGE. DOG OWNERS CAN NOW USE ALL VILLAGE WASTE BINS. PLEASE USE THEM!



MOBILE LIBRARY

Wednesdays - (School)
10.40—11.10


16th December
6th January
27th January
17th February

YOU MUST WEAR A FACE COVERING

Due to the council rearranging the schedules there are now no visits to Holloway Crescent.

The visits are on Wednesdays outside the school.

Essex Council are continually reviewing the usage of the library bus, so USE IT OR LOOSE IT!



VISITS are due every 3 weeks
www.essex.gov.uk/Libraries-Archives/

Rodings Walking Group 2020

Phil Sutterby
01279 876274
www.rodingswg@gmail.com



All planned walks have been cancelled until restrictions are lifted.

THERE ARE MANY PEOPLE TAKING ADVANTAGE OF OUR BEAUTIFUL COUNTRYSIDE GOING WALKING. PLEASE KEEP TO THE FOOTPATHS AND STAY CLEAR OF FARMLAND BEING USED FOR AGRICULTURE.

LOOK OUT FOR THE YELLOW ARROW SIGNS.

If you would like a copy of various interesting walks speak with Phil Sutterby 01279 876274



SOCIAL MEDIA SITES WHICH YOU MIGHT FIND USEFUL FOR THE VILLAGE

E-voice.org.uk/leadenroding/ : Parish Council

Facebook: Leaden Roding Village

Facebook: Friends of Roding Primary School

Facebook: Leaden Roding Village Hall

Facebook: Leaden Roding Fire Station

Facebook: St Michael and all Angels Church, Leaden Roding

Facebook: The Axe & Compasses

(please inform us of any other sites of interest to be listed)