

The Little Burstead Times



Your Parish Council News

The Little Burstead Times

Your Parish Council News



The Little Burstead Times



Your Parish Council News

Contents

- 3. The Parish Council
- 5. Chat from the Chair
- 8. Impending Roadworks
- 8. Can you help?
- 9. Where is this?
- 9. Building Bridges
- 12. The Farming Year
- 13. Little Burstead Bugle—The Village Hall News
- 15. St Mary the Virgin
- 17. Little Burstead Circular Walk
- 19. Then and Now
- 20. A Little Local History — The Zeppelin Crash of 1916
- 22. Welcome to Little Burstead – A New Resident’s Guide
- 25. Community Etiquette
- 29. Problem Plants
- 35. Litter and Fly Tipping
- 36. Lastly

The Little Burstead Times



Your Parish Council News

The Parish Council

Little Burstead Parish Council is the local governing body for the parish of Little Burstead. Parish Councils are the smallest units of local government in England and typically focus on issues affecting their specific local community. Below is an overview of who we are and what we do.

The Council is composed of elected representatives from the local community. These representatives, known as councillors, are typically elected every four years by residents of the Parish. The Council is led by a Chairperson who is elected by the Council members. The Chairperson presides over meetings and represents the Council in official functions.

David Clark – Chairperson

Ashleigh, Laindon Common Road, Little Burstead CM12 9TD

T: 01277 65 52 32 E: davidatashleigh@btinternet.com

Katrina Watts

Knoll Cottage, Broomhills Chase, Little Burstead CM12 9TH

T: 07739 40 15 15 E: k_watts3@sky.com

Pamela Ashcroft

Winters, Laindon Common Road, Little Burstead CM12 9TD

T: 01277 65 89 80 E: pbashcroft@btinternet.com

Marcel Cooper

Meadow View Barn, Hatches Farm Road, Little Burstead CM12 9SG

T: 07802 25 55 77 E: mebcooper@gmail.com

Mrs Stephanie Robinson – Parish Clerk

The Dower House, 135-139 Billericay Road, Herongate CM13 3SD

T: 07865 272178 E: littlebursteadpc@gmail.com



If you have an issue with which you would appreciate the Parish Council's help, please email it in the first instance to the Parish Clerk who will distribute to all councillors for their attention.

Remember that Parish Councillors are unpaid and give their time and energy freely to help the community so please, if you can, help them to look after the Parish.

Parish Councils have a range of duties and responsibilities aimed at improving the quality of life for their local communities. The key duties typically carried out by a Parish Council are varied but focussed almost entirely on the Parish of Little Burstead alone.

Overall, Parish Councils play a vital role in grassroots governance, directly addressing the needs and concerns of their local communities and enhancing the quality of life for their residents.

The Little Burstead Times



Your Parish Council News

Planning and Development

The Parish Council is consulted on every planning application that is made to Basildon Borough Council within the parish of Little Burstead and asked to comment.

As a Council we recommend that you, or your Agent, attend the Parish Council meeting ahead of your planning application to gain the Council's feedback and support.

Members of the Parish Council do not want to hinder your enjoyment of your property and understand fully that a house designed in the past, may well need remodelling to suit modern and future use.

However, the Parish Council would like to ensure that your proposed development is respectful of neighbouring properties in terms of scale, design and material choice and that the development, if permitted, will not cause unreasonable nuisance to your neighbours.

Please make the effort to come to a Parish Council meeting and explain your proposal to us, it will almost certainly be of benefit to your application to have our support.

Improving the Village

If you have any ideas that might make Little Burstead a better place for us all to live in, please don't be shy - share them with us, we welcome all (or perhaps almost all) suggestions – please don't be backward in coming forward!

To keep your pets in pristine order, why not try Mutties Cabin—open Monday to Saturday 09:00 to 17:30



Mutties Cabin

Polka Dot Farm
Tye Common Road
Billericay
CM12 9SB

Allison
07791098576
Laura
07572379936

The Little Burstead Times



Your Parish Council News

Chat from the Chair

Dear Villagers,

A very warm welcome to the first edition of The Little Burstead Times. The Parish Council plan to publish this magazine twice a year, in April & October. It will contain local information which we hope will be useful to both existing and new residents, with news of forthcoming events and activities with which you may wish to participate.

The Parish Council is currently a team of four councillors and a clerk who deals with administrative and accountancy matters on the Council's behalf. We should be five councillors and therefore have a vacancy which we would very much like to fill so if you are interested and prepared to give up a few hours of your time for the benefit of the village, please contact me or anyone on the team. I would like to clarify that this is an unpaid, voluntary role, but rewarding in that you would be helping both our community and the village.

The next village event will be the Remembrance Day Service at the War Memorial on Sunday 10th November with a Memorial Service starting in the Old School House at 10:30am. Following the service, there will be refreshments provided in the Village Hall. We look forward to seeing you at this service, but if you can't make it, you are very welcome to join us at any (or all) of our future Parish Council meetings on the dates below – all our meetings are at 7:30pm in the Village Hall.

David

Chairperson of Little Burstead Parish Council

Future Parish Council Meetings

21st January 2025

18th March 2025

20th May 2025

15th July 2025

16th September 2025

18th November 2025



**Insurance
Backed
Guarantee**
with every
build

5 Star Reviews



PAUL BAILEY
HOME EXTENSIONS



WE ARE WORKING IN YOUR AREA

ARE YOU FINDING YOUR CURRENT LIVING SPACE A BIT CRAMPED?

Imagine having the extra room you need without the hassle of moving. At Paul Bailey Construction Ltd, we specialize in designing and building beautiful home extensions and loft conversions that enhance your lifestyle and increase your property's value.

WHY CONSIDER A HOME EXTENSION?

Enhance living space: Whether you dream of a larger kitchen, a new living area or an additional bedroom, a home extension can provide the space you need.

Increase property value: A thoughtfully designed extension can significantly boost your homes market value.

OUR SERVICES

- ✓ Home Extensions
- ✓ Loft Conversions
- ✓ Garage Conversions
- ✓ Renovations / Alterations
- ✓ Kitchens / Bathrooms
- ✓ Design & Build

CONTACT US NOW

Email us:
info@paulbailey.info

Call us:
01277 532991

www.paulbailey.info

Paul Bailey Home Extensions is the trading name of Paul Bailey Construction LTD Company no. 07522780



**Insurance
backed
Guarantee**
with every
build.

5 Star Reviews



WHY CHOOSE PAUL BAILEY CONSTRUCTION LTD?

Expert Craftsmanship: Our team of experienced professionals ensure that every detail of your extension is built to the highest standards.

Bespoke Designs: We work closely with you to create a design that perfectly complements your home and meets your needs.

Hassle Free Process: From the initial consultation to the final touches, we handle every step of the process, ensuring a smooth and stress-free experience.

Quality Materials: We use only the finest materials to ensure your extensions is not only beautiful but also durable and long lasting.

Get Started Today!

Expand your living space with a stunning home extension, contact us today for a free no-obligation consultation.

Let us show you how we can turn your vision into reality.

Call us today on **01277 532991** or visit our website: www.paulbailey.info to learn more and schedule your consultation.

Email us:

info@paulbailey.info

Call us:

01277 532991

www.paulbailey.info

CONTACT US NOW

Paul Bailey Home Extensions is the trading name of Paul Bailey Construction LTD Company no. 07522780



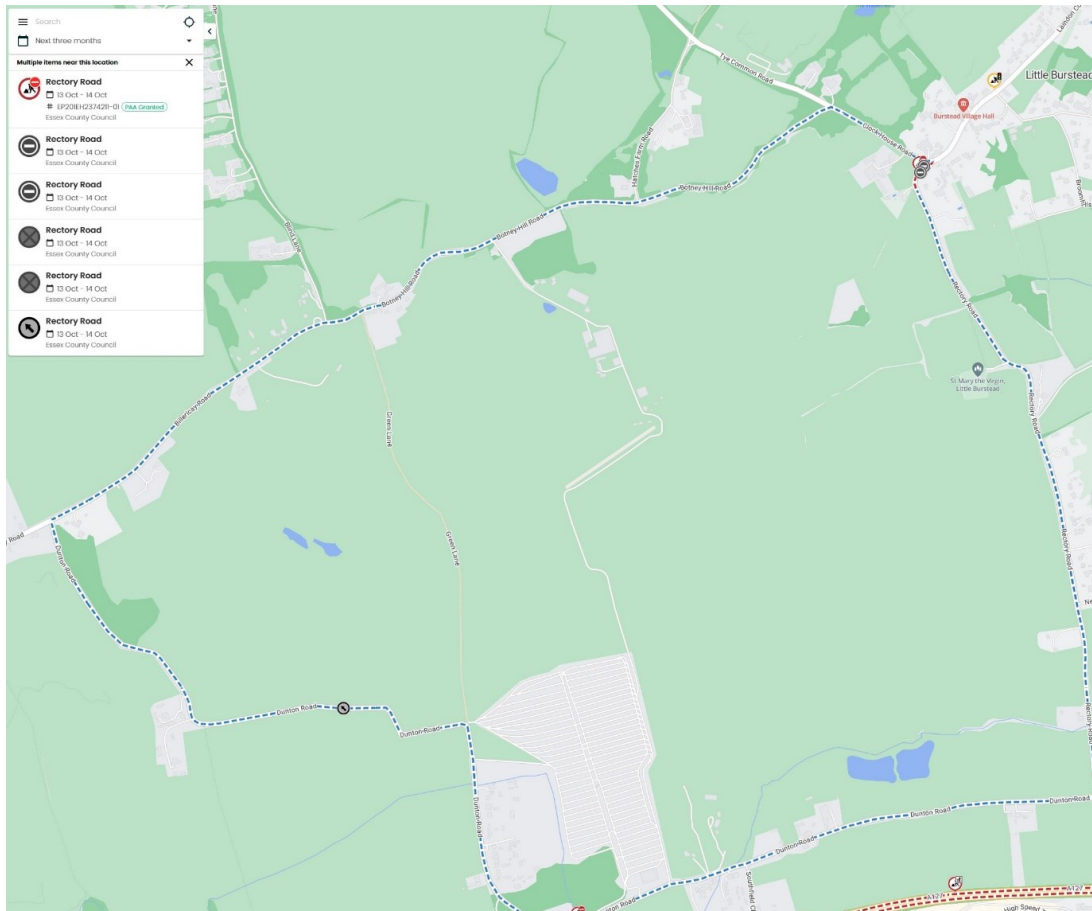
The Little Burstead Times



Your Parish Council News

Impending Roadworks

It's worth keeping your eye on <https://one.network/> which shows impending planned roadworks in our area and indeed, anywhere in the UK. Please note that this currently shows Rectory Road being closed at the village centre end on the night of 13th October with a diversion in place via Dunton Road and Botney Hill Road.



Can you help?

Councillor Jim Devlin, Vice Chairman of Billericay Town Council is looking for details about the fallen men listed on the Little Burstead War memorial and others killed in World War 2. Any stories about the men and photographs of them and also any other local war time history you may recall, would be very useful and greatly appreciated.

Councillor Devlin is putting together an exhibition for VE Day next May and adding these details to the Billericay Community Archive at billericayhistory.org.uk.

If you have any information, please contact Jim Devlin at jim.devlin@billericaytowncouncil.gov.uk or 01277 65 69 37.



The Little Burstead Times



Your Parish Council News

Where is this?

Little Burstead has many picturesque corners and many of you will know the village well..... but how well? There's a bottle of Champagne up for grabs to the first person who emails the correct what3words location of the unusual rock formation in the photograph below.



Building Bridges

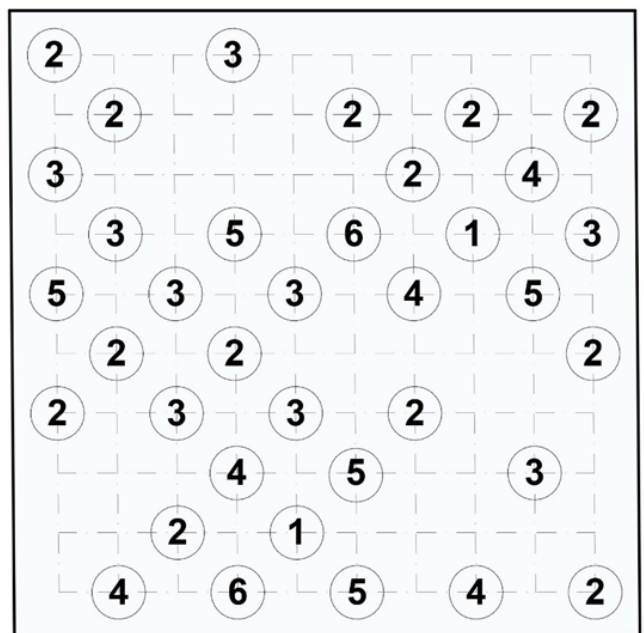
For those of you who like a puzzle, here's one that you may not have tried before.

Each circle represents an island and the number in the circle shows how many bridges there are linking that island to other islands.

There can be no more than 2 bridges between any 2 islands, bridges cannot cross each other and can only be built horizontally or vertically in a straight line.

To solve this puzzle, all the islands must be connected in the same web.

Good luck!





Welcome to Faceworx

Your trusted destination for personalized anti-wrinkle and skin treatments. We specialize in helping you achieve your aesthetic goals with expert care and precision.

Our advanced techniques and customized approach ensure effective solutions for your specific concerns.

Price List

Anti-Wrinkle Injections

1 Area	£80
2 Areas	£140
3 Areas	£180
Anti Wrinkle Nose (Bunny Lines) Diminishes the lines formed on the nose.	£60
Anti Wrinkle Gummy Smile Relaxes the top lip so less of the gums are visible when you smile.	£60

Lemon Bottle Fat Dissolve

Small Area (chin)	£100
Medium Area (Arms, Inner Thighs)	£140
Large Area (Outer Thighs, Abdomen, Love Handles)	£200

Micro Needling

1 Treatment	£75
2 Treatments	£145
3 Treatments	£210



07545 563246



www.faceworx.beauty



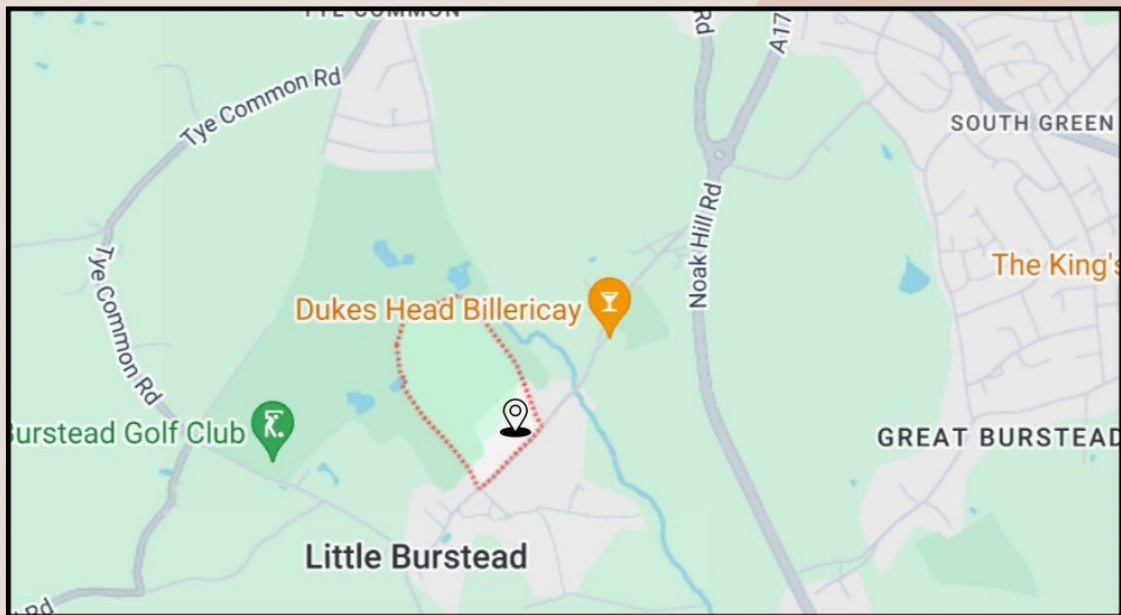
denisefaceworx@gmail.com



[@faceworx.beauty](https://www.instagram.com/faceworx.beauty)



WHERE TO FIND US



**Spinnakers
Laindon Common Road
Little Burstead
Billericay
Essex
CM12 9TD**



07545 563246



denisefaceworx@gmail.com



[@faceworx.beauty](https://www.instagram.com/faceworx.beauty)



www.faceworx.beauty

The Little Burstead Times



Your Parish Council News

The Farming Year

Little Burstead nestles amidst many traditional Essex farms who put food on our plates and act as dedicated custodians of our countryside. Here, courtesy of Tom Buckenham, is what to watch for as you pass the fields around our village.

Another farming year has come to an end and as always, the weather has dominated the picture. Planting of this year's winter crop harvest was brought to an abrupt halt when the weather broke last October and there was little let up in the wet weather until the spring. When the ground did become dry enough to begin planting crops in the spring, the existing moisture and further rainfall meant the spring planted crops and the winter crops grew well but suffered with increased disease pressures due to the wet conditions. This resulted in many crops needing more than the usual crop protection products to keep them healthy. With the large amount of rainfall the area experienced from winter through to June, inevitably a dry spell was round the corner. Whilst the dry conditions were perfect for harvest and hay making, with crops coming into store below the maximum moisture content of 15% which is required for sale and hay not deteriorating from having been rained on during the making period, the ground has still baked out considerably.



As soon as harvest is completed, the fields are already being prepared for the next harvest, but the dry ground is making preparing these seedbeds difficult. Metal on cultivators is wearing quickly, if the machine can get into the ground. You will notice from the above, a farmer is never happy with the weather. Hopefully a meaningful amount of rain will fall in September to make things easier. Between now and the end of October, most of the field activity you will see will be based around cultivation, trimming hedges and planting next year's harvest. A lot of the machines during this period are particularly large, so please do bear with us when we move around the country roads between fields. If you see an escort vehicle with flashing lights parked in the middle of the road, it does mean something rather large is following behind, and you won't be able to pass by easily.

Ideally planting of winter crops will be completed by the end of October, focus will then turn to catching up on jobs like maintenance of machinery, tidying up of farming buildings and selling of Christmas trees.



Little Burstead Village Hall

Little Burstead is blessed with a warm and welcoming village community and nestle in heart of this is the Village Hall which aside from being available for use as a venue for parties, meetings and seminars etc., itself puts on a variety of entertainment throughout the year and for example last year, we had in excess of sixteen events taking place; film nights, murder mystery, wine and cheese evening, scarecrow competition, Easter egg hunt, Burstead in bloom, Music in the Meadow and many more, fun for all the family in our village hall and the village field.

You may also enjoy the daffodil display around the village to which we add more every year – we'll soon rival Keukenhof! If you would like to help with planting, contact Roger.

The Village Hall Committee members are:

Chairperson

Roger Savage cas21savage@gmail.com - 01268 41 65 20

Treasurer

Angela McCoy aclark2719@aol.com

Hall Bookings

Carol Savage cas21savage@gmail.com

Secretary

Chris Hutchings aabodies@aol.com 01268 41 22 15

Committee Members

Jan Ellis 01277 65 71 00

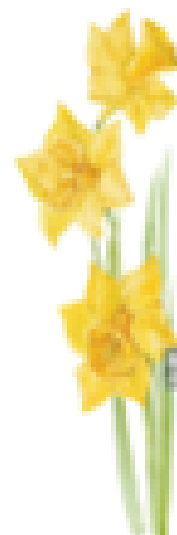
Sheila Wright 01277 65 85 42

James Slocombe jaslocombe@gmail.com

Simon Hirst simonhirst1970@outlook.com

Mandy & Rob Moulton Miller r1912ram@google.com

Website littleburstead.com



Events for your diary

- With Winter on its way, please book your places with any village hall team member for our annual CHRISTMAS DINNER on Fri 6th December at 6:30 for 7:00pm in the Village Hall. You haven't heard "On the 5th Day of Christmas" properly, until you've heard it sung by Little Burstead residents after a few glasses of Christmas cheer!
- For those of you not too hung over, on the 7th December between 10:00am & 2:00pm we have the annual Christmas Fayre, again in the Village Hall. This is a fantastic opportunity to buy unique, locally produced and hand crafted presents for those you love.
- Alternatively, if you would like to sell your crafts at this mega-event, we do still have a few tables available – always handy to raise a little cash before Christmas!
- If the thought of a 1st class meal at the Village Hall interests you, then make touch with Mandy (r1912ram@google.com) to join the Village Hall Monthly Dining Club.





VILLAGE HALL COMMITTEE NEWS

Winter 2024 Issue 30 Charity No 301311

Regular hirers include the National Childbirth Trust & support groups for teenage addiction & ECC registered specialist therapeutic care for teenagers, the Village Hall is also home to many clubs and societies.....take your pick from these:

Yoga Classes For all ages

Monday 5:45 pm to 7:00pm and Friday 9:45am to 11:00am - jendamaris87@gmail.com

WI

Thursday once a month - Contact any club member

Art Painting and a Chat

Twice a month on Thursday at 10:00am to 1:00pm

Carol Savage - cas21savage@gmail.com

Table Tennis

Every other Monday at 7:30pm to 10:00pm

Anthony Barnes -anthonyformalwear.co.uk

Laindon Conservators

John Ellis - jfellis@btinternet.co.uk

Lighting The Beacon

We will light the Village Beacon for a special occasion and mount a plaque on the beacon to commemorate a birth

or a passing in our Village, or just a very special date for you personally, just make touch and we'll make it happen.



Next Year will have a host of event; Easter Egg Hunt, Music in the Meadow, Wine & Cheese Evening, Afternoon Tea Cakes, Murder Mystery, Burstead in Bloom, Film Night, Scarecrow Competition and much, much more so please join us and join in!

Send us your email address to receive our round robin updates!

The Village Hall history..

The land situated between The Elms and Crome Cottage in Laindon Common Road was gifted to the village by Mrs Florence Johnson, she lived in Hope House, Little Burstead, the transaction was signed and amongst others witnessed by her housemaid Annie Davidson on 27th August 1926.

The Rector Charles Lennard Payne became part of the original group of trustees. Eventually with the help of Villagers from both Little and Great Burstead, a gentleman named Bill Polly raised funds for the hall which was then built by Frederick Weedon. Bill Polly and Frederick Weedon's descendants still live in the village and are very active in our community.

It was necessary for the hall to be a registered charity and self funding. Provision was made for the Womens Institute and a quote from the conveyance document. item 11 states that the "Womens' Institute shall have 12 meetings a year at no charge giving notice 6 months in advance of dates required but shall pay such reasonable charges for lighting and firing as the committee may decide".

Mrs Johnson was a committed member of the WI and to this day, the WI still meet regularly once a month. Over the years there have been many changes to the Hall, with a large extension now able offering excellent mobility impaired facilities and keeping abreast with all necessary new regulations.

The Little Burstead Times



Your Parish Council News

St Mary the Virgin

Rectory Road
Little Burstead
Billericay CM12 9TR

billericaychurches.org/smv/index.html



Sunday Services

We meet at 10.30 every Sunday morning for worship. The monthly pattern we follow is:-

- 1st Sunday Holy Communion.
- 2nd Sunday Morning Worship
- 3rd Sunday Holy Communion
- 4th Sunday Morning Worship
- 5th Sunday Team service*

We are part of the Billericay and Little Burstead Team Ministry, and on a 5th Sunday in the month, the service will be at one of the other churches in the Team, usually Emmanuel on Laindon Road or Christ Church on Perry Street.

Who We Are

St. Mary's is led by the Reverend Rupert Hankey - 01277 63 14 34 & 07539 31 95 45
rupert.hankey@billericaychurches.org & ruperth5@btinternet.com

Rupert was ordained in 2007 after a short period in the law before serving for 14 years as a Church Army Evangelist. He has one daughter, Emily, has now graduated from university and is currently working in recruitment.

After God and his family, Rupert's passions include Christian heavy metal music, chocolate and West Ham United – in no particular order!

Assisted by:

Sandra Healy (Church Warden & Pastoral Care Assistant) – 01268 41 55 54 & 07957 34 80 06
smwarden@gmail.com

In connection with the church buildings please contact our Churchwarden or our Verger
David Bowles - 01277 65 76 15
- davidbowles670@gmail.com



The Little Burstead Times



Your Parish Council News

Church Dates for your Diary

Coffee morning on the 2nd Tuesday in the month 10.00 - 12.00 in the Old School

Remembrance service on Sunday 10th Nov at 10.30 in the Old School

Carols by Candlelight on Sunday 22nd Dec at 18.30 in St. Mary's church

Christingle service on Christmas Eve at 16.00 in St. Mary's church

Midnight Communion on Christmas Eve at 23.00 in St. Mary's church

Next Chapter Bereavement Group - Coffee mornings held on 2nd Saturday in the month at Emmanuel Church Hall, Landon Road, Billericay CM12 9LD at 10.30 - 12.30.

For further details please contact Sandra Healy at smwarden@gmail.com or call on 01268 41 55 54 or 07957 34 80 06.

Please contact Reverend Rupert Hankey with any enquiries you may have.

The Alpha Course – A few words from Reverend Rupert

I am currently trying to come to terms with the possibility of retiring at the end of this year (not very successfully – I'm losing too much sleep for my liking!). Part of the problem is that all the years seem to have passed in a blur – it surely can't be over thirty years since I started out in church ministry?!

But all too often life does pass in a blur. Don't let the most important questions of all pass you by – how can you make the most of your life? What will happen when you die? The Alpha course is a great place to explore these and other questions – all in a friendly and relaxed setting.

We would love to welcome you on one of our courses.

Rupert

Mimi's Boutique

High fashion comes to Little Burstead!

Mimi's Boutique sells women's clothing for sizes 8-24.

We also have women's accessories and shoes.

Our opening hours are:

Thursday 09:30 to 14:30

Friday 09:30 to 14:30

Saturday 09:30 to 14:30

Sunday 09:30 to 14:30

Monday 09:30 to 14:30

We are easy to find at

Tye Common Road, Billericay, CM12 9SB

Please come and see us, we're sure that you will like our varied and contemporary stock of clothing—we truly have something for everybody.



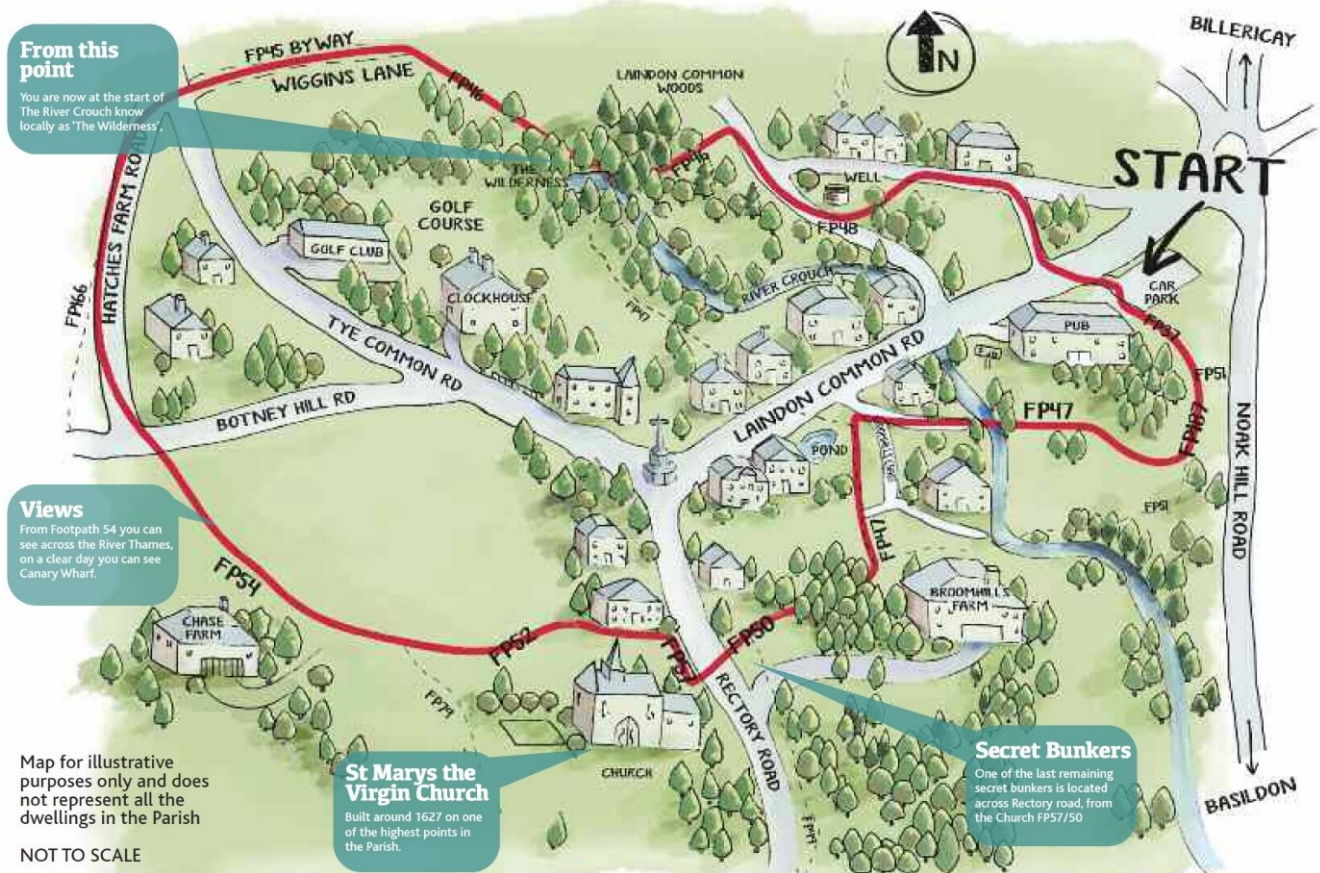
The Little Burstead Times



Your Parish Council News

Little Burstead Circular Walk

Fancy a stroll? If you have about 90 minutes to spare and fancy walking for 6.5km, start at the car park at the Noak Hill end of Laindon Common Road and follow the route highlighted in red below to see the village on foot – you'll love it!



1. From the car park, cross Laindon Common Road, follow the way marker signs turning left towards Laindon Common. By Frith Cottage turn left, then after a short distance turn right onto the grassland, past the Well.
2. Follow the way marker signs towards the woodland of Laindon Common and then join Bridleway 48, turning right.
3. Carry on until a sign to turn left. You will cross a bridge over a stream (the River Crouch) onto Footpath 46 and the Golf Course. The remains of a hedge on the right, rich in plant and animal life, is estimated to be at least 600 years old!
4. Follow on until you cross the stream to the other side of the hedge.
5. Continue until you reach the centre of the Golf Course where there is a lake enclosed by trees (The Wilderness), including rare wildlife.
6. Turn right following the way marker signs across to Wiggins Lane.
7. At the junction with Wiggins Lane, you will notice large Sycamore trees facing you. Once a roadway between Tye Common and Hatches Farm Road, Wiggins Lane is now a green lane used as a bridleway for access to fields.
8. At the end of Wiggins Lane, carefully cross the road, to Little Burstead Common, following the way marker signs. You can now walk down the side of the road or on the verge where possible. Please be careful especially during peak hours as the traffic can be particularly busy. In drier months it may be possible to walk through the Common, but this is usually marshy for much of the year.

The Little Burstead Times



Your Parish Council News

9. At the junction with Botney Hill Road, carefully cross the road and turn left on the verge, then turn right onto Chase Farm (Footpath 52). You'll see a fine view ahead of South Essex.
10. Continue across the fields and over a small bridge, following the way marker signs until you have reached a right turn. At this point you can go either way. Turn right to carry on the footpath or turn left to take a slightly shorter route via a permissive path, and then meet up again with Footpath 52.
11. Following the signs, continue in an easterly direction towards Little Burstead Village past a copse to the right and then up to the South boundary of The Rectory.
12. Upon reaching Rectory Road, turn right walking parallel to the road at the edge of the field Footpath 57.
13. Halfway along this stretch of the route continue either on the footpath, across the corner of field, or take the permissive path along the edge of the field for the final stretch towards St Marys the Virgin Church.
14. From the Church, cross Rectory Road before the corner, taking care to cross safely.
15. Walk through the gap in the hedge, turn right and over the bridge beneath the next hedge. Facing Broomhills Farm, turn left onto Footpath 49 towards Broomhills Chase.
16. Upon reaching Broomhills Chase (private residential estate) turn right, then left, and right again where signposted.
17. Carry on down into a small valley to the River Crouch. Take care the path is rather steep and slippery in wet weather, although there is a handrail. Go across the bridge and up the other bank into the fields.
18. With trees and hedgerow to the right, go on up across until you turn to the left, Footpath 187, behind the gardens of Noak Hill Road properties.
19. Continue following way marker signs into small woodland, with a sports ground to the right.
20. Upon reaching Laindon Common Road turn right taking the natural roadside path to return to the car park.

The Cosy Cup

Maxine and Suzanne look forward to welcoming you to one of Little Burstead's newest attractions!

Opening times

Monday - Friday 07:00 to 15:00

Saturday - 08:00 to 15:00

Sunday - 09:00 to 15:00

We have a variety of dishes from generous cooked breakfasts to jacket potatoes, salads, paninis and much more, including some of the best homemade cakes in the County.

- Great friendly atmosphere
- Dog friendly and great views.

We have been open for over 10 weeks so please come and support us—you will find us easily at

Tye Common Road, Billericay, CM12 9SB

Keep your eyes open for our Afternoon Teas which we will be on offer imminently!

We hope to see you soon!



The Little Burstead Times



Your Parish Council News

Then and Now



We don't know the date this was taken, but guess it was very soon after the 1st World War - say early 1920s?

Below is the same view now:



The Little Burstead Times



Your Parish Council News

A Little Local History — The Zeppelin Crash of 1916

Introduction

The Zeppelin crash in Great Burstead was a significant event during World War I, marking a key moment in the air raids carried out by German forces over Britain. During this period, Zeppelins—rigid airships developed by the German military—were used for strategic bombing, terrorising civilian populations and military targets. The crash in Great Burstead in 1916, stands out as one of the most notable airship disasters of the time.

Background: The Zeppelin Campaign

During World War I, the German military sought to undermine British morale by conducting aerial bombings using Zeppelin airships. These dirigibles, filled with hydrogen, were capable of long-range flights and could carry large payloads of bombs. Due to their altitude and speed, they were initially difficult for British defence systems to counter.

From 1915 to 1917, Zeppelins were deployed for bombing raids over London and other cities, causing significant damage and loss of life. However, as British anti-aircraft technology improved and fighter planes were developed, these airships became increasingly vulnerable. The development of incendiary bullets further posed a significant threat to the hydrogen-filled airships.

The Zeppelin L32 and its Final Mission

The Zeppelin that crashed in Great Burstead was identified as L32, part of the German Imperial Navy's fleet. On the night of September 23-24, 1916, L32 was part of a larger raid targeting London. The airship, commanded by Oberleutnant Werner Petersen, was on a mission to drop bombs over the British capital.

Flying at high altitude to avoid anti-aircraft fire, L32 was one of several Zeppelins involved in the raid. However, the British Royal Flying Corps had been preparing to defend against these raids, using newly developed aircraft and incendiary ammunition to counter the airships.



The Crash in Great Burstead

While returning from the bombing mission, L32 came under attack by a British B.E.2c fighter piloted by Second Lieutenant Frederick Sowrey. Sowrey's aircraft, armed with the newly developed incendiary ammunition, fired upon the Zeppelin, igniting its hydrogen-filled gas cells. The airship quickly became engulfed in flames and began to plummet.

At approximately 1:15am on September 24, 1916, L32 crashed in a field in Great Burstead. The massive airship disintegrated upon impact, and all 22 crew members aboard, including Oberleutnant Petersen, were killed.

The Little Burstead Times



Your Parish Council News

Aftermath and Impact

The crash site quickly attracted attention from local residents, who rushed to the scene. The remains of the Zeppelin were scattered across the field, and the bodies of the crew were later recovered and given a military burial by British authorities.

The downing of L32 was significant for several reasons. First, it demonstrated the vulnerability of Zeppelins to aerial attack, especially with the use of incendiary bullets. This marked a turning point in the Zeppelin campaign, as the German military began to lose more airships to British defences. Over time, Zeppelin raids became less effective and were eventually discontinued as a primary strategy.

Second, the crash in Great Burstead boosted British morale. The downing of enemy Zeppelins was widely celebrated in British newspapers and Second Lieutenant Sowrey was hailed as a hero for his role in bringing down L32. He was later awarded the Distinguished Service Order for his bravery.



Legacy

Today, the crash site in Great Burstead remains an important historical location, symbolizing the defence of Britain during the Zeppelin raids. Although the site itself has changed, with much of the wreckage cleared away, local historians and aviation enthusiasts continue to commemorate the event. The crash of L32, along with other Zeppelin losses, marked the decline of the Zeppelin as an effective weapon of war and highlighted the advancements in British aerial defence.

Conclusion

The Zeppelin crash in Great Burstead serves as a reminder of the dangers and tragedies of aerial warfare during World War I. It reflects the growing importance of airpower in military strategy and the technological advancements that were made in response to new threats. The bravery of those involved, particularly Second Lieutenant Sowrey, is remembered as a key moment in the defence of Britain against the Zeppelin menace.

The Little Burstead Times



Your Parish Council News

Welcome to Little Burstead: A New Resident's Guide

Welcome to Little Burstead! We're delighted to have you as part of our community. This guide is designed to help you settle in and make the most of living in our beautiful parish.

Getting to Know Your Community

Introduce Yourself: - Take a moment to introduce yourself to your neighbours. A friendly “hello” can go a long way in building good relationships.

Local Amenities:

- Village Hall: The heart of community activities, offering various events and meeting spaces and to rent the hall or join in with the events, make contact with Carol Savage at cas21savage@gmail.com.
- Local Shops and Services: Discover the nearby grocery stores, post office, and other essential services – a wide variety of shops are available close to Billericay High Street while Basildon is surrounded by many large supermarkets. However, if you need somewhere to “nip” to quickly with easy parking, why not try South Green? It’s really a handy place to know about.
- Community Groups and Activities:
- Little Burstead Parish Council: Attend council meetings to stay informed and involved in local decisions.
- Clubs and Societies: Join local clubs to meet new people and engage in community life.

Essential Information

1. Waste and Recycling:

- Collection Days: Waste and recycling are collected on specific days. Check the council website at basildon.gov.uk/article/4784/Waste-and-recycling or load the council app “OurStreets – Basildon Council” for your schedule and much more useful information.

- Recycling Centres: The nearest recycling centre is at Barleylands Recycling Centre, Barleylands Road, Billericay CM11 2U. This is free but will only accept recyclable waste and for more general waste, you will need to make an appointment for the Pitsea Recycling Centre, Pitsea Hall Lane, Pitsea, Basildon SS16 4UH.
- The Crunch: Periodically, Basildon Council will send out a waste collection service which normally takes place in the car park at the junction of Laindon Common Road and Noak Hill Road. This is your chance to turn up and drop your rubbish locally but the service is currently under review and may be suspended again.

2. Public Transport: - Bus Services: Regular bus services connect Little Burstead with surrounding towns. The timetables is available at bustimes.org/services/256-basildon-bus-station-ramsden-heath-white-horse but presently, the timetable for the 256 bus is shown on the following page.

The Little Burstead Times



Your Parish Council News

Tuesdays, Thursdays & Saturdays except public holidays

Basildon bus station		12:45
Great Berry Shelley Avenue		12:52
Laindon Shopping Centre		12:57
Laindon High Road, Willowfield		13:01
Dunton Dunton Road, Kings Road	09:00	13:04
Little Burstead The Memorial	09:06	13:09
Billericay Tye Common Rd, Wiggins Lane	09:09	13:11
Billericay Sun Corner	09:14	13:16
Billericay High Street	09:15	13:18
Billericay rail station	09:16	13:22
Billericay Bluebell Wood		13:25
Billericay Perry Street / Lakeside		13:30
Billericay Mayflower School		13:33
Billericay Potash Road		13:35
Ramsden Heath Heath Road		13:39
Ramsden Heath The White Horse		13:41

Tuesdays, Thursdays & Saturdays except public holidays

Ramsden Heath The White Horse	09:45
Ramsden Heath Heath Road	09:47
Billericay Potash Road	09:51
Billericay Mayflower School	09:53
Billericay Perry Street / Lakeside	09:56
Billericay Bluebell Wood	10:01
Billericay rail station	10:04
Billericay High Street	10:08
Billericay Sun Corner	10:10
Billericay Tye Common Rd, Wiggins Lane	10:15
Little Burstead The Memorial	10:17
Dunton Dunton Road, Kings Road	10:22
Laindon High Road, Willowfield	10:25
Laindon Shopping Centre	10:29
Great Berry Shelley Avenue	10:34
Basildon bus station	10:41

Yes, we agree, it's not much of a service.

- Train Stations:

The nearest train station is in Billericay which offers a good connection to London's Liverpool Street Station. There is a car park which serves the station, but this is chargeable. Some commuters elect to drive to West Horndon and catch a train to Fenchurch Street which offers savings both in ticket and parking costs.

3. Healthcare: - Local GP Practices: Register with a local GP for healthcare services. The closest medical facilities are listed on the NHS website at [nhs.uk/nhs-services/services-near-you/](https://www.nhs.uk/nhs-services/services-near-you/).

- Accident and Emergency: - We are fortunate to have Basildon University Hospital at SS16 5NL on our doorstep. This offers a full Accident and Emergency service but it is worth bearing in mind that for minor injuries, a trip to the Minor Injuries Unit in Orsett hospital at RM16 3EU may save a long wait for treatment. [find-an-accident-and-emergency-service](#).

The Little Burstead Times



Your Parish Council News

Check on the best facilities to use at nhs.uk/service-search/find-an-accident-and-emergency-service.

- Defibrillators: Little Burstead has 4 defibrillators at the following locations:

- AEC, Unit 3, Carvers Farm, Dunton Road, Little Burstead CM12 9TY
- The Burstead Gold Club, Tye Common Road, Little Burstead CM12 9SS
- The Dukes Head, Laindon Common Road, Little Burstead CM12 9TA
- Little Burstead Village Hall, Laindon Common Road, Little Burstead CM12 9TJ

Locations of defibrillators may change, so it's worth occasionally checking on bhf.org.uk/how-you-can-help/how-to-save-a-life/defibrillators/understanding-defibrillators-what-they-are-and-how-to-use-them for the latest advice and locations.

We hope you never have need of one, but below are the British Heart Foundation instructions—they're well worth reading and at least if you have read them, you will have a small head start in an emergency.

Anyone can use a defibrillator, but you need to phone 999 for the code to open the door and retrieve the unit. You do not need training. Once you turn it on, it will give clear step-by-step voice instructions. Many defibrillators also have visual prompts and images showing how to use them. The device checks the person's heart rhythm and will only tell you to give them a shock if it's needed. You cannot shock yourself or someone else accidentally.

Steps to using a defibrillator

Step 1: Press the green button to switch on the defibrillator and follow the instructions.

Step 2: Remove the person's clothing above the waist. You might have to remove a person's bra by slipping the straps down or cutting it off. Most defibrillator packs have tools like scissors to help you to do this. It might feel odd or embarrassing but do not let that stop you. Remember, this is a life-or-death situation.

Step 3: Peel off the sticky pads and attach them to the person's bare skin. Put one pad on each side of the chest as shown in the picture on the defibrillator.

Step 4: Once you have attached the pads, stop CPR and do not touch the person. The defibrillator will then check the person's heart rhythm.

Step 5: The defibrillator will decide whether a shock is needed. If so, it will tell you to press the 'shock' button. An automatic defibrillator will shock the person without you needing to do anything. Do not touch the person while they're being shocked.

Step 6: The defibrillator will tell you when the shock has been given and whether you need to continue CPR.

Step 7: If the defibrillator tells you to continue to do CPR, continue with chest compressions until the person shows signs of life, or the defibrillator tells you to stop so it can analyse the heartbeat again.

- Pharmacies: Find nearby pharmacies for your prescriptions and health needs – again the NHS app will help you find what you need in this respect, please visit nhs.uk/service-search/pharmacy/find-a-pharmacy.

4. Utilities: - Water and Sewerage: Services are provided by Essex & Suffolk Water. Contact them 03457 820111 for new connections or issues.

- Electricity and Gas: Choose from a range of providers. Visit comparison websites to find the best deals.

5. Internet and Communications: - Broadband Providers: Several providers offer services in Little Burstead, but for most of the Parish, County Broadband (01376 562002) appear to be the only supplier of full fibre Broadband. Should County Broadband not be able to serve your property, the only viable alternative presently available appears to be to install a Starlink Satellite system which is available from spacex.com. It may also be possible to obtain Broadband connection through a Satellite service provider such as Sky, but you will need to check availability and choose the best option for your needs. There is also the option of fitting a mobile SIM based unit, but this will only be as good as the mobile signal available at your home although if you have 5G, this is a viable alternative that shouldn't be dismissed without further thought.

- Postal Services: The local post office provides postal and banking services. The main Post Office is now in the One Stop store in Billericay High Street but there's also a service in South Green.

The Little Burstead Times



Your Parish Council News

Community Etiquette

Noise Levels:

- Be mindful of your noise levels, especially during early mornings and late evenings.
- Inform neighbours in advance if you plan to have a party or any event that might be loud.

Parking:

- Park considerately, ensuring that driveways and pathways are not blocked. Follow local parking regulations.

Pet Ownership: - Ensure pets are well-behaved and do not cause a nuisance.

- Are your pets intimidating your neighbours? Dogs especially are territorial and may appear to be aggressive to others in defence of your property.
- Ultimately, you will be responsible for your dog's behaviour and under Section 3 of the Dangerous Dogs Act 1991, if any dog is dangerously out of control in any place, including all private property, the owner or person for the time being in charge of the dog is guilty of a summary offence - if your dog bites your neighbour, you are the criminal!
- For smaller pets such as cats or dogs, defecation or urination can lead to unwanted smells, especially in hot weather. Please be aware that pets may not appreciate land ownership boundaries and for example, your neighbour may not be pleased to find your dog's excrement deposited neatly in the middle of their lawn. On this subject, which utter morons think it appropriate to pick up their dog's excrement in "poo" bags and then throw the filled bags into hedges and trees? This is plain stupid. So if your dog defecates in a public place, pick it up with a "poo" bag, take it home and dispose of it properly. Nobody has the right to denigrate other people's enjoyment of nature and the countryside just because they are too lazy to behave in a decent and civilised way.
- Noise, again dogs are probably the biggest cause of problems. Dogs will bark to defend you and your property and they tend to perform this task well – sometimes too well and in doing so, do they cause a nuisance to your neighbours?
- Before buying a pet, be confident in your ability to train it properly and if necessary, seek professional help.
- Be aware that exotic pets may require a licence.

Generally

"Do unto others as you would have others do unto you" and by following these guidelines, you can foster positive relationships with your neighbours and contribute to a harmonious living environment.

Getting Involved

1. Volunteer Opportunities: Contribute to the community by volunteering for local projects, events, or the parish council.
2. Community Events: Attend community events such as fairs, markets, and seasonal celebrations to meet residents and enjoy local culture.

Useful Contacts

1. Borough Council Office: Contact Basildon Borough Council for any local governance issues, planning applications, and community services.
2. Emergency Services: Police, Fire, Ambulance: Dial 999 for emergencies. For non-emergencies, contact the local police station.

The Little Burstead Times



Your Parish Council News

3. Local Representatives: - Get in touch with your local councillors for any concerns or to discuss community matters. The Parish Council sits beneath both Basildon Borough (basildon.gov.uk) and Essex County Council (essex.gov.uk).

Your elected Councillors for Basildon Borough Council are:

- Cllr. Andrew Baggott - Andrew.Baggott@members.basildon.gov.uk
- Cllr. Richard Moore - richard.moore@members.basildon.gov.uk
- Cllr. Kevin Blake - kevin.blake@members.basildon.gov.uk

Basildon Borough Council should be contacted for matters relating to:

- Animal Control & Licensing
- Building Control
- Council Tax & Benefits
- Environmental Health
- Housing, Rent & Homelessness
- Planning
- Parking
- Street Scene Services
- Waste & Recycling

Your Essex County Council elected representatives are:

Cllr Anthony Hedley - cllr.anthony.hedley@essex.gov.uk

Dr Richard Moore - cllr.richard.moore@essex.gov.uk

Essex County Council should be contacted on for matters relating to:

- Adult Social Care & Health
- Births, Ceremonies & Deaths
- Business Licences
- Children, Young People & Families
- Heritage, Local History & Archives
- Libraries
- Roads, Streets & Transport
- Trading Standards
- Blue Badge
- Disabled parking bays
- School transport

Please note that both Basildon Borough Council and Essex County Council operate online reporting facilities which they claim, will be much quicker to use than telephoning. Ho hum.

For matters concerning roads, streets and transport such as to report a highways problem, get updates on travel, transport and roadworks, please refer to Essex Highways (essexhighways.org) where you will be able to:

- report or track a problem with a road or pavement
- get live traffic and travel updates
- apply for something including skips and scaffolding licenses, dropped kerbs etc.
- get bus information
- apply for an older or disabled persons bus pass
- pay or challenge a bus lane or gate Penalty Charge Notice (PCN)
- view highway improvement schemes
- get around in Essex
- view a public rights of way map

The Little Burstead Times



Your Parish Council News

You will also find information about:

- Blue Badges
- Disabled parking bays
- School transport
- View highway improvement schemes
- Get around in Essex
- View a public rights of way map

Environmental Stewardship

1. Biodiversity: Participate in local initiatives to protect and enhance our natural environment. Join planting events and support conservation efforts.
2. Sustainable Living: Adopt eco-friendly practices such as recycling, composting, and reducing energy consumption to contribute to a sustainable community.

Conclusion

We hope this guide helps you settle into Little Burstead and enjoy all that our Parish has to offer.

Above all, welcome to the community, and we look forward to getting to know you!

HERONGATE WOOD WOODLAND CEMETERY & FUNERAL DIRECTORS

Plan ahead and avoid those difficult questions...

- *Have you had the conversation with family members?*
- *Who would you speak to if you needed to make funeral arrangements for a family member?*
- *Does your family know your wishes regarding your funeral?*
- *Have you or your family made any financial provisions regarding your funeral?*

No?...then book a free, no obligation appointment with one of our professional and qualified Funeral Arrangers

Contact us today on:

Telephone: - **01277 811064**

Email: enquiries@herongatewood.co.uk

Website: green-burial.co.uk

Herongate Wood, Billericay Road, Brentwood, Essex, CM13 3SE



Part of the Adam & Greenwood Funeral Home Family



The Little Burstead Times



Your Parish Council News

Problem Plants

In the UK, certain plants are restricted or banned due to their invasive nature, potential harm to native ecosystems, or threat to human and animal health. Below is a list of plants that are either banned or require careful management according to UK regulations.

It is sometimes difficult to be sure of plant species, but apps such as "PictureThis" will allow you to accurately identify plant species to decide whether a plant may be a problem.

Invasive Non-Native Plants

1. Japanese Knotweed (*Fallopia japonica*) - Highly invasive and can cause significant damage to buildings and infrastructure.



The Little Burstead Times



Your Parish Council News

2. Giant Hogweed (*Heracleum mantegazzianum*) - Dangerous due to its toxic sap, which can cause severe skin burns and blindness.



3. Himalayan Balsam (*Impatiens glandulifera*) - Outcompetes native plants and can cause erosion along riverbanks.



The Little Burstead Times



Your Parish Council News

5. New Zealand Pigmyweed (*Crassula helmsii*) - Invasive in ponds and waterways, forming dense mats that smother native aquatic life.



6. *Rhododendron ponticum* - Forms dense thickets that shade out native plants and can carry diseases harmful to trees.



The Little Burstead Times



Your Parish Council News

7. Water Fern (*Azolla filiculoides*) - Rapidly spreads on the surface of water bodies, blocking sunlight and deoxygenating the water.



8. Parrot's Feather (*Miriophyllum aquaticum*) - Invades water bodies, impacting native species and water flow.



The Little Burstead Times



Your Parish Council News

Plants Requiring a Licence for Cultivation

Certain species of Eucalyptus - Due to their potential to impact local ecosystems and water usage.
Some species of Prunus - Due to potential diseases that can be harmful to native and commercial species.

Harmful and Toxic Plants

- Common Ragwort (*Senecio jacobaea*) - Toxic to livestock and can cause liver damage.
- Deadly Nightshade (*Atropa belladonna*) - Highly toxic to humans and animals.
- Hemlock (*Conium maculatum*) - Poisonous if ingested by humans or animals.
- Foxglove (*Digitalis purpurea*) - Contains toxins that can cause serious health issues if ingested.

Plants Restricted by Specific Regulations

Cotoneaster species (*Cotoneaster horizontalis*, *C. simonsii*, *C. microphyllus*) - Some species are listed as invasive and are restricted in certain areas.
Aquatic Plants - Species like Water Hyacinth (*Eichhornia crassipes*) and Floating Pennywort (*Hydrocotyle ranunculoides*) are banned due to their invasive nature in water ecosystems.

Management and Disposal

Proper Disposal: Invasive plants should not be composted. Instead, they must be disposed of through controlled waste procedures to prevent further spread.
Control Measures: Landowners are legally required to control certain invasive plants on their property to prevent them from spreading to neighbouring areas.

Resources and Reporting

Government Guidance: The UK government provides resources and guidance on managing invasive plants, which can be found on the GOV.UK website.
Reporting: Invasive species sightings can be reported to local environmental agencies to help manage and control their spread. By adhering to these regulations and being aware of the restricted plants, residents and gardeners can help protect the UK's native biodiversity and ecosystems.

Possible Future Problem Species

There have been many reports recently of problems caused by Bamboo. While not yet classed as an invasive species by the Wildlife and Countryside Act 1981 and as a result, there are no restrictions on planting Bamboo, some species show invasive behaviours.

Principally, there are two distinct types of Bamboo; clumping and running.

Bamboo does not spread through seeding, they spread through their root systems – rhizomes (underground stems). Therefore, understanding the difference between 'clumping' Bamboo and 'running' Bamboo is important.

Clumping Bamboo is known as sympodial. It has shorter rhizomes that typically tend to stay closer, and the Bamboo will grow in patches. Running Bamboo on the other hand is monopodial. This means that it has longer rhizomes and tends to extend horizontally and 'run' outwards.

The Little Burstead Times



Your Parish Council News

The rhizomes of running Bamboo can extend well beyond their intended planting area and without proper management, can quickly get out of control causing a wide-spread infestation that can get beyond the borders of your property and into many neighbouring properties. However, running and clumping Bamboo should both be classed as invasive, even supposedly harmless clumping types can be a nuisance and cause serious issues if left untreated.

When it comes to damage, Bamboo is similar to the dreaded Japanese knotweed. As it grows, its shoots will stubbornly push through anything that gets in the way. Bamboo can push through bricks, drains, cavity walls, patios and will target weaknesses or cracks in concrete. This can be quite a frustrating thing for any homeowner or commercial landowner, but it's even more so for neighbouring properties and can result in legal troubles.

Running Bamboo can spread far beyond the intended planting area. This includes onto neighbouring properties – this is known as 'encroachment.' As the bamboo moves onto their land, your neighbour will end up having to hire skilled professionals to eradicate the infestation.



There are increasing numbers of encroachment cases being brought forward due to Bamboo. If the Bamboo is found to have spread between neighbouring properties, then compensation may be due.

Acceptable Hedges

In the UK, the law regarding hedges on a boundary mainly focuses on resolving disputes and maintaining good neighbour relations. Here are the key points:

High Hedges Legislation

The High Hedges Act (Part 8 of the Anti-social Behaviour Act 2003):

- This law specifically addresses issues related to high hedges that adversely affect a neighbour's enjoyment of their property.
- A high hedge is defined as a line of two or more evergreen or semi-evergreen trees or shrubs, over 2 meters tall.

Making a Complaint:

- If informal discussions fail, a neighbour can complain to their local council about a high hedge that they believe is causing problems.
- The complainant must show they have tried to resolve the issue amicably before involving the council.
- There is usually a fee for making a complaint, which varies by council.

The Little Burstead Times



Your Parish Council News

Council Investigation:

- The council will assess if the hedge adversely affects the complainant's reasonable enjoyment of their property.
- They will consider factors like light obstruction, the hedge's impact on the property's use & the hedge's condition.

Remedial Action

- If the council finds the hedge problematic, they can issue a remedial notice to the hedge owner, specifying actions to reduce the height of the hedge. This notice is legally binding and failure to comply can result in fines.

General Boundary Hedge Guidelines

1. Maintenance Responsibility:

- Each property owner is responsible for maintaining the hedges on their property.
- If a hedge grows over a boundary, neighbours have the right to trim branches or roots that encroach onto their property, provided they offer the cuttings back to the owner.

2. Neighbour Consent:

- It is generally good practice to inform or seek consent from your neighbour before trimming a shared boundary hedge.

3. Boundary Ownership:

- Boundaries can be complex and it is often useful to check property deeds or seek legal advice to clarify ownership and maintenance responsibilities.

4. Resolving Disputes:

- Mediation services are available to help neighbours resolve disputes over boundary hedges without legal action.
- Courts are typically a last resort and it's advisable to pursue all other avenues first.

By understanding and adhering to these guidelines, neighbours can avoid conflicts and maintain a harmonious living environment.

The Little Burstead Times



Your Parish Council News

Litter and Fly Tipping

Reducing littering requires a multifaceted approach that combines education, infrastructure, enforcement, and community engagement. Here are some strategies to help stop people from dropping litter:

Education and Awareness Campaigns

- **Public Awareness Campaigns:** Run campaigns to educate people about the environmental, social, and economic impacts of littering.
- **School Programs:** Incorporate anti-littering education into school curriculums to instil good habits in children from a young age.
- **Community Workshops:** Hold workshops and informational sessions to discuss the importance of maintaining a clean environment.

Infrastructure Improvements

- **More Litter Bins:** Increase the number of litter bins in public spaces, ensuring they are conveniently located and regularly emptied.
- **Recycling Facilities*:** Provide adequate recycling bins alongside regular waste bins to encourage proper disposal of recyclables.
- **Designated Smoking Areas:** Create designated smoking areas with proper disposal options to reduce cigarette butt littering.

Enforcement and Penalties

- **Fines and Penalties:** Enforce stricter fines for littering, with visible signs indicating the penalties for offenders.
- **Surveillance:** Use CCTV in high-traffic areas to monitor and deter littering.
- **Litter Patrols:** Employ or encourage community wardens or volunteers to monitor litter hotspots & report violations.

Community Engagement

- **Volunteer Cleanups:** Organize regular community cleanup events to foster responsibility & pride in local areas.
- **Adopt-a-Street Programs:** Encourage businesses, schools & community groups to adopt & maintain specific areas.
- **Incentive Programs:** Implement reward programs for individuals or groups who consistently keep their areas clean.

Business and Organisational Involvement

- **Partnerships with Businesses:** Work with local businesses to reduce packaging waste & provide bins nearby.
- **Corporate Responsibility:** Encourage businesses to sponsor clean-up events or contribute to anti-littering campaigns.

Behavioural Nudges

- **Signage:** Use creative and attention-grabbing signs that remind people to dispose of their litter properly.
- **Public Art:** Install public art that doubles as functional litter bins or incorporates anti-littering messages.
- **Feedback Bins:** Use bins that show immediate positive feedback when used correctly, such as displaying a thank-you message.

The Little Burstead Times



Your Parish Council News

Legislation and Policy

- Ban Single-Use Plastics: Implement policies to reduce single-use plastics that are commonly littered.
- Deposit Return Schemes: Introduce schemes where people can return bottles and cans for a small refund, reducing litter and encouraging recycling.

Regular Maintenance

- - Clean Streets Program: Establish regular street cleaning schedules to maintain cleanliness & deter further littering.
- - Rapid Response Teams: Create teams to quickly address litter hotspots and maintain cleanliness.

Personal Responsibility

- Lead by example: Encourage community leaders & influencers to model good behaviour and promote anti-littering.
- Peer Influence: Empower residents to respectfully remind others to dispose of their litter properly.

Technological Solutions

- Litter Tracking Apps: Use apps that allow residents to report litter and track clean-up efforts.

In summary, by combining these strategies, communities can create a comprehensive approach to reducing littering and fostering a cleaner, more responsible environment—but ultimately, we live in the real world of “low budgets and high complaints” and what can we really do? Probably, the very best advice is to influence through leading by example, don’t drop rubbish and if you see it on the street, pick it up and dispose of it properly and when you have the opportunity, throw scorn upon the scum, the veritable dregs in our society, that befool our living environment with their filth.

Lastly

- We’ve done our best to make sure that the contents of the Little Burstead Times are true and correct, but we’re human and so please accept, as we do ourselves, that we are capable of making mistakes. If you see something that is wrong, that needs correction, that should be said in addition, that has been omitted—then please say and we will do our utmost to bring it to people’s attention in the next issue—reader input is welcome because discussion is healthy!
- If you have any ideas for content or would like to submit a report about personal, group or other activities even if only vaguely associated with Little Burstead, we would love to hear from you.
- If you have any ideas for improvements, big or small, that would make Little Burstead a better place to live, please share them with us.
- If you have knowledge of local history or an old village photographs that might interest others, please send it in.
- If you can spare an evening occasionally to join us and see how Parish Council affairs are run, would love to see you at our regular meetings
- If you feel that you could spare an evening every two months regularly, you care for your community and you like to help others, why not join us on the Parish Council, we would welcome your help.
- We hope that you now read this article because you have read the whole of this issue to get here and we truly hope that you enjoyed the journey, but even if you didn’t and think it could be vastly improved, please give us your feedback, negative or positive, whatever it is—we would really appreciate the guidance this would give us.

Please send your emails to littlebursteadpc@gmail.com