



The Chelmer and Blackwater Navigation at Ulting

This beautiful view of the north side of the Chelmer was taken from the grounds of All Saints Church, Ulting. The Navigation runs through a largely unspoilt part of rural Essex and connects the county town of Chelmsford with the tidal estuary of the River Blackwater at Heybridge Basin. The Navigation joined the sea at Heybridge rather than the sea port of Maldon, owing to objections from landowners and other port interests in the town who feared the Navigation would bring a loss of trade. The community around Heybridge Basin rose following the construction work in the 1790s, as the area was entirely rural farmland until the building of the canal.

Never having been nationalised, it continued to carry commercial freight until 1972, and an increasing number of leisure users since that time. During the late 1990s and early 2000s, the Navigation Company diversified its activities and then ran into financial difficulties, going into administration in 2003. Freehold ownership of the Navigation remains with the original Company of Proprietors of the Chelmer and Blackwater Navigation, but management was taken over by Essex Waterways Ltd in 2005. Following negotiations with the Company of Proprietors and the joint administration of the Company, The Inland Waterways Association's subsidiary company, Essex Waterways Ltd took over the management of the Navigation on 14th November 2005, in order to save the waterway from closing. The arrangement provided that Inland Waterways Association un-

In this issue	Page
Editor's Note Future Parish Council Meetings The Parish Bouquet Community Diary	2
Fancy a Shepherd's Hut? Places of Worship	3
Harmony at Home Bonfire Night	4
Fishing for Compliments Footpathers Walking Club	5
Little Oaks Nursery Ulting Indictments in the 1500s	6
The Poor of the Villages of Langford and Ulting	7

dertook day-to-day responsibilities for the Navigation, as well as assuming responsibility for all income and expenditure relating to it, although the freehold ownership of the waterway remains with the Navigation Company.

The Navigation runs through some very picturesque land in our two parishes and is well worth a visit if only to see our own locality from a different perspective. As a 'Footpathers' Walking Club has been suggested (see page 5) why not join us on a walk along this wonderful stretch of water which has remained open and independently run throughout its history.

Editor's Note



Welcome to issue 16 of our newsletter. I am delighted to tell you that at a ceremony on 20th July, our little newsletter became a finalist in the *Essex Life Community Magazine Awards*. This is no mean achievement for us, and I

would like to thank everyone who has supported me in the newsletter and contributed to its success with articles and ideas and, of course, most importantly, with sponsorship. The winner was a superb 48-page glossy magazine from Stansted Mountfitchet, so we have a lot to aim for! However, we should be proud that our little newsletter has been recognised in this way. Herewith a copy of the Certificate and the original can be viewed in 'Heavenly Supplies' village shop during opening hours (10 – 12 every day).



But, of course, a newsletter can only survive if it has news! Do let me have some articles you think might be of interest – especially from Ulting. I'm a Langford girl, so know more about that than Ulting. You can send your ideas and/or copy to me at 11 Ulting Lane, Langford, CM9 6QB, or email them to me at irenea@lepra.org.uk. As I said in the last issue, without your input you'll have to put up with my input!

Future Parish Council Meetings

Don't forget that you are more than welcome (and indeed encouraged) to come and attend Parish Council meetings – we're here to serve you after all. The next meetings will be held on:

Tuesday 15th November, and Tuesday 20th December; and for 2017: Tuesday 3rd January and Tuesday 23rd February.

All will be held in Langford & Ulting Village Hall and will begin at 7.30 p.m. Tea and coffee will be served from 7.10 onwards so that if you have any questions or queries before the meeting these can be addressed in a friendly and private manner before the official business of the meeting begins.

And the Parish Bouquet goes to...



Colin Ashby and his team from C.J. Ashby Forestry Ltd who have been making such a wonderful job of keeping the churchyard and cemetery in Langford looking so good. We have received nothing but praise from residents and visitors alike, who say that the churchyard

has never looked better. So thank you Colin, and your team, for all the hard work and dedication that you have put into this. It really is appreciated.

Would you like to nominate someone for the next Parish Bouquet? Please send your nominations, and reasons for nominating them, to me - details in the left hand column. Let's thank those who make our lives better.

Community Diary

Sunday 30th October – Halloween Spooky Science Day, Museum of Power, 10-4, Adult £6, + Concessions

Sunday 30th October – Bonfire and Fireworks party, Village Hall 6.30 p.m. onwards. Free admission (bring your own refreshments)

Saturday 19th November – Christmas Fayre, St. Giles' Church, Langford, 10-2. Free admittance, Refreshments

Sunday 4th December – Candlelight Christmas Extraordinaire, St. Giles' Church, Langford, 6.30 p.m. Tickets £10 (refreshments included)

Sunday 11th December - Christmas Fayre, Museum of Power. Tickets available from Tourist Information Centre

Sunday 18th December - Carol Service, St. Giles' Church, Langford, 3p.m. (Mulled wine & refreshments afterwards)

Sunday 25th December - Christmas Day Service, St. Giles' Church, Langford, 9.15 a.m.

Sunday 1st January 2017 – 'New Year's Crank Up', Museum of Power, Adults £4.50 + concessions

Do you have any items for the Community Diary? If so, do let me know in good time and I will include them in the next issue which will come out in February 2017.

Fancy a Shepherd's Hut?



Anyone who has ever seen the film 'Far from the Madding Crowd' based on the Thomas Hardy novel, will remember Gabriel Oak's shepherd's hut. Kevin Gribble, proprietor of Maeldune Bespoke Joinery, has added a new venture to his excellent woodworking skills by expanding into the manufacture of a more updated version of the shepherd's hut. After years of helping out on building sites and making staircases and window frames, Kevin, of Church Cottages, Langford, decided he wanted to try something new, so this year the business has expand into the manufacture of these beautiful huts.

Traditionally used by farmers for shelter at lambing time, shepherd's huts have recently made a comeback, and an attractive addition to modern day living in the home and garden. Kevin said "I just like challenges and making something I haven't made before. The huts are something I've had my eye on making for four or five years now, so it's great to have that chance. I was determined to make a living out of these huts as I've had enough of making windows and doors now, so wanted a fresh challenge."

Kevin's wonderful hut had its first outing at the Blackwater Show at Chigborough on Sunday 19th June and drew great interest from visitors, becoming one of the star attractions.

Shepherd's huts have many uses – be it as an office, artist studio, hobby room, spare bedroom or just a peaceful retreat! They can also offer a business opportunity as B&B accommodation, glamping, catering outlet or shop.

Shepherd's huts do not normally need planning permission (although it is advisable to check with your local council especially if you live in a listed building/conservation area or you are going to use the hut for business purposes) so why



go through all the stress and hassle of building an extension? If you decide to move home – the shepherd's hut can go with you.

Kevin's traditional style hut is built on a solid oak or metal chassis with cast iron wheels and finished with traditional corrugated tin or with a timber cladding – whatever the customer prefers. The windows and doors are made from hardwood and glazed with Slimline double glazed units. The huts are well insulated and are therefore cool in the summer and cosy in the winter.

The huts are built bespoke to the customer's requirements and are priced accordingly, so you can be assured of close attention to your requirements and of high quality workmanship. Maeldune Bespoke can also offer advice on interior design and soft furnishings.

So whether you fancy this for business or pleasure, this beautiful, hand-crafted hut will be the envy of all your friends, and could be an excellent alternative to the summer house at the bottom of the garden.

If you would like further information on these unique huts, or a chance to view them, contact Kevin on: 01621 842132 or on mobile numbers: 07950 741359 (Kevin) or 07706 828949 (Jeanette) or by e-mail to maeldunejoinery@outlook.com. This is a venture not to be missed and is unique to Langford.



PLACES OF WORSHIP
St. Giles' Church, Maldon Road,
Langford

All Enquiries – 01621 855447
www.stgileslangford.org.uk
 Services at 9 a.m. every week
 1st Sunday – Holy Communion
 2nd Sunday – Matins
 3rd, 4th, 5th Sunday – Holy Communion

All Saints Church, Church Road
Ulting

Rev. Stephen Northfield – 01245 380958
 Email: SRNorthfield@aol.com
 Services of Holy Communion at 9 a.m. on the
 1st, 3rd and 5th Sundays of the month

Business in Focus



Michelle Harvey, owner of the Harmony at Home franchise in Essex, is quite a remarkable woman. With 35 years' experience of childcare, she has three children of her own, owned a pre-school business, been a nanny, and taught in a college of further education for 15 years, and she is still full of energy and vitality.

Following her stint in further education she decided she needed a change of style, and investigated the possibility of managing her own childcare franchise to cover the whole of Essex. She now recruits and places nannies and other child-care staff, including au pairs and mothers' helpers and housekeepers. She interviews around six people a week, all of whom are carefully checked and DBS vetted (the Disclosure and Barring Service – formerly known as Criminal Records Bureau (CRB)

Michelle trained to be a First Aid Centre and is now a fully qualified First Aid instructor, she can train childcare workers/Nannies in paediatric first aid, these courses are fully recognised by OFSTED and a requirement of the EYFS. Alongside this she can also deliver and award certification for Emergency first Aid and First Aid at Work which is now a legal requirement for all working environments.

Harmony at Home, the premier nanny and childcare agency was founded in 2004 with a guiding philosophy to provide parents and childcarers with outstanding levels of service and care. Today, the team are proud to count many of the UK's most experienced, reliable and professional nannies and childcare providers on their books, and Michelle is one of them. Every one of the franchises adheres to the same exacting Harmony at Home standards to ensure that all of their clients receive a premium level of childcare service.

Michelle prides herself on taking the time to know each and every parent – understanding their childcare requirements and finding the perfect solution to fit their lifestyle and needs. So whatever you're looking for, Michelle will be more than happy to discuss your requirements either on the phone or face to face to ensure that these are met.

Harmony at Home was created to provide parents with excellent, reliable and flexible childcare – and that continues to be our guiding principle to this day.

Michelle says: "We pride ourselves on the quality and trustworthiness of our childcarers. Personal

connections are important to us – and we treasure the relationships that we have made with families over the years, who need different childcare services as their families grow. From nannies, mother's help and maternity support to mobile crèches and Au Pairs and housekeepers, we offer a complete range of childcare services to meet your needs."



Michelle Harvey Owner, Essex Franchise
Childcare and Training Ltd, trading as Harmony at
Home Essex, a franchise operated under license.

Registered in England: 09697297

3 Sugarmill Cottages, Ulting Lane, Ulting, CM9 6QY

Telephone 01245 381353

Mobile 07768 390994

www.harmonyathome.co.uk

Bonfire Night



This year's Bonfire night will be held on Sunday 30th October on the green at Langford and Ulting Village Hall. The bonfire will be lit at 6.30p.m. and the fireworks will start at 7p.m. As previously, it would be really helpful (and most welcome) if people would like to bring a couple of large fireworks rather than a box of little ones. If you would like to bring your own refreshments that is fine. Tables and chairs are available inside the hall (or outside if it is fine).

Do come along and enjoy a fun evening with your friends and neighbours. Don't forget to shut your curtains and leave some music playing if you have animals in the house to avoid them becoming scared.

Fishing (or should that be 'Carping') for Compliments

Anyone who has had a fishing-mad member of the family will appreciate the dedication and equipment required to take on this challenging sport, and also the endless washing of muddy clothes which smell more of Billingsgate than the countryside. Having grown up with a brother who insisted on dragging me along (as a very unwilling 'helper' I must admit) I never understood the fascination for 'drowning worms' as we used to call it but then we certainly never encountered the size of fish that George Gribble has been catching.

In his Facebook diary, George tells of this one, caught at 11.30 at night (hence the very dark photograph) and which took ages to bring in, on his own, and caught on maggots. (I still recall the horror when my mother found a box of maggots in our fridge in my brother's fishing heyday!)



This second one, George tells me, was when he had been fishing for three days and two nights (over 42 hours) and he hadn't caught anything. Then, on the third day when he was packing up, with his 'bivvy' over his head he heard the bite alarm scream off and it produced his personal best – the biggest fish he had caught so far.



The third fish (called a dark scaly mirror) was caught after George had waited 24 hours for a bite. Not the biggest fish he has caught, he told me, but the best

looking (and who can argue with that). This particular catch took George into the 'Crafty Carper' magazine.



Does anyone else have this passion for fishing? Do you have any stories to tell? Do let me have them (with photographic evidence of course – no hands apart fisherman's descriptions please!)

Or perhaps you have another outdoor pursuit that you would like to share with us? Do let me know. We are always interested to learn what goes on in our area. Are you part of a club or activity organisation? If so, do let me know.



The 'Footpathers' Walking Club

During a conversation about how waistlines were increasing and energy levels decreasing as we get older, a suggestion was made that a Walking Club might be formed in the parishes with a view not only to increasing fitness, but also to discover the beauties of Langford and Ulting via the many footpaths that serve us. With that in mind, the new club will set out on its first walk from the Village Hall on Saturday 5th November at 2 p.m. (weather permitting) and will continue once a month, on the first Saturday at the same time (although the precise dates and times can be arranged to suit the majority). We have so many beautiful walks in our two parishes and it will enable us to meet others, exchange news, and get fit. Four-legged as well as two-legged participants are welcome, and the walks will be taken at a pace (and a distance) that suits everyone. If you would like to become a 'Footpathers' do let me know and I will pass that on to the organisers. Walks can be as long or as short as people require – there is no set limit, just the enjoyment of getting out in the fresh air and meeting people.

The Poor of Langford and Ulting



During the medieval period, care of the poor was a matter for the church, but by the early 17th century, the poor had become the responsibility of the parish where they lived or originated

from. The Parish Vestry, (which consisted of the principal members of a parish - normally the Lord of the Manor, the Vicar, landowners and farmers) was responsible for deciding how to deal with the poor in its parish. They appointed overseers to administer payments to the parish poor or run a parish workhouse. This system of poor relief was paid for by wealthier residents of the parish by payment of a local tax known as a 'Poor Rate'. Money could be given to the poor who remained in their own homes, known as 'out-door' relief.

The records relating to the relief of the parish poor prior to 1834 are extremely varied and not all parish records have survived, but those that do can be found at the Essex Record Office's catalogue: SEAX. Search for the parish name and other key words such as vestry minutes, workhouse, poorhouse or out-door relief.

A workhouse was built in Maldon in around 1715 under the terms of the will of Thomas Plume (1630-1704) Archdeacon of Rochester for "...erecting a workhouse for the poor of Maldon...". Situated on Market Hill, it served the parishes of Maldon All Saints with St Peter, and Maldon St Mary, and was later extended to include surrounding parishes.



Each parish had at least one representative on the Board. All other parish workhouses were then closed. The Boards were supervised and reported to the Poor Law Commissioners, later called the Poor Law Board, and then the Local Government Board. Admission into a workhouse became the main way of dealing with the poor. A workhouse was run by a master or governor whose task was to supervise the inmates, clothe and feed them, and set them to work. Some workhouses had additional staff. The Board of Guardians generated different types of records, particularly minutes of meetings. Not all of them have survived, but the Essex

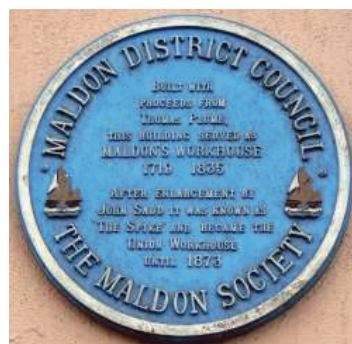
Record Office contains a number of records from most of the Union Workhouses.

Under the Poor Law Act of 1834, Ulting became part of the Witham Union, and in on 14th December 1835 Maldon Poor Law Union was established to include the poor of the Maldon area, including Langford, Heybridge, Woodham Walter, and Great and Little Totham, and responsibility for the poor was removed from the individual parish. Maldon Poor Law Union then took over the existing Maldon workhouse.

The buildings were enlarged with a new top floor, porch and high wall being added. It could hold 350 men,



women and children supervised by Master and Matron and school teachers. Following the erection of the new workhouse in the 1870s, the old building was refronted, with new doors and bay windows added. It was sold at auction at Kings Head Maldon on 31 August 1875 in two lots: the main block and, separately, the outbuildings and school. The building was redeveloped into houses and flats during the 1980s and now bears a commemorative plaque provided by Maldon District Council and the Maldon Society.



In 1872-73 on a five-acre site on Spital Road in Maldon, a new Workhouse was built to hold 450 people. In 1883 the Witham Union was abolished, and Ulting, then in its care, was transferred to Maldon. After 1930, the workhouse was re-

designated as a Public Assistance Institution, and in 1948 it joined the National Health Service as St. Peter's Hospital.



Many of us who delve into family history, have found relatives being sent to, or even dying in, the Workhouse, and the records held at the Essex Record Office shed light on the conditions under which they lived.



Little Oaks Nursery, which runs from Langford and Ulting Village Hall, is now under new management. The Nursery caters for children ranging from two years to five years old, and is open Monday, Tuesday and Thursday from 0930 to 1430, and on Wednesday and Friday from 0930 to midday. It is closed during the school holidays.

The Nursery is registered with Ofsted Early Years to accommodate children on a part-time or full-time basis. The large green at the back of the Village Hall is a wonderful area for continued physical, social and emotional development through play.

The new owner, Shirley Hegerty, aims to provide a healthy, safe and stimulating learning environment for the children, ensuring that their time spent within the nursery is enjoyable, educational and, most of all, fun.

It was wonderful, therefore, that Shirley wanted the children to have their own 'Harvest Festival' and so arrangements were made with St. Giles' Church for the children to come in and celebrate with a few songs, and some wonderful food and, of course, a beautiful harvest loaf. Parents of the children also brought some tinned and packaged foodstuffs to be included with the main Harvest Festival Service held in the church on 9th October, and then to be given to the Maldon Food Bank. This was a very thoughtful and generous act, and the Food Bank at the Elim Church, in Wantz Road, was very grateful for the donation from Little Oaks. Sadly the picture doesn't show all the wonderful things that were donated, but the basket was deep, and full.



The 'harvest' visit was very successful, and Little Oaks are planning to come back to the church on 20th December for their own little 'Carol Service'. Grateful thanks to all those who made this such a successful and enjoyable visit. We hope this is the start of a long and mutually beneficial association between the Little Oaks Nursery, and St. Giles' Church.

Ulting Indictments in the 1500s

In an earlier edition of the newsletter (spring 2016) we learned about some indictments in Ulting in the 1600s, but more, and earlier, indictments have come to light!



30th January, 1572 - Thomas Coke of Witham, weaver, deputy to Richard Harison, fruiterer and purveyor to the Queen's Majesty, was indicted for extorting "by color of the same deputieshipp" [sic] £3 from Richard Barbor of Ulting, sherman, at Witham, and converting the same to his own use.

12th February, 1573 - Edward Baker of Ulting, yeoman, was indicted for carrying a handgun and shooting at a certain duck with the same.

20th January, 1576 - Elizabeth Baker of Ulting, widow, was indicted for obstructing and enclosing with a ditch a certain highway at the same, which has been a common highway from time out of mind within the parish of Ulting aforesaid, leading from Cooke's green to a bridge called Bonford Bridge. Fined 20d.

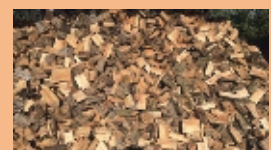
7th August, 1577 - Nicholas Cocke of Hatfield Peverel, miller, was indicted for buying selling and carrying divers kinds of grain without licence at the same, and for buying and engrossing ten quarters of corn worth £6s.8d. from Richard Pease at Ulting. Acknowledged. Fined by the justices for the offence in four indictments, £10.

26th September, 1591 - John Lurken and William Hosyer of Ulting, husbandmen, were indicted for assaulting and beating John Colman and John Haywood at the same.

Epiphany, 1592 - Abraham Lynce of Ulting, gentleman, was indicted for not coming to the parish church to receive the Sacrament of the Lord's Supper for the space of one whole year, from the feast of St. Michael in 3 Elizabeth [A.D.1590] until the same feast next following.

Keep Warm This Winter

Logs for Sale
Seasoned Logs
CJ Ashby Sawmill
07802 955785



Clubs, Societies and Voluntary Bodies

Parish Council

www.essexinfo.net/langford-ulting/

Chairman – Vicky Anfilogoff

(Tel: 01621 840532) anfilogoff@gmail.com

Vice-Chairman – (and Newsletter Editor)

Irene Allen – (Tel: 01621 855447),

Irenea@lepra.org.uk

Councillors:

Colin Ashby (Tel: 01621 858618), cj@ashby.co.uk

John Clemo (Tel: 01245 380852),

mojoclemo@gmail.com

Kathy Palmer (Tel: 01245 382417)

Katherinepalmer@live.co.uk

Clerk – Jenny Clemo (Tel: 01245 380852)

langford.ulting.pc@gmail.com

or visit www.essexinfo.net/langford-ulting

Village Hall Committee

John Tomlins (Chairman 01245 380359)

Vicky Anfilogoff (Secretary 01621 840532)

Mary Stoddart (Bookings 07519 360788)

langfordultingvh@gmail.com;

www.essexinfo.net/langfordultingvh

Members: Albert Chaplin,

Peter Downs, Cilla Driver, Sally Marks,

Merle Pipe, Caroline Spong

Bowls Club – Monday eve & Wednesday afternoon

Contact Albert Chaplin (Tel: 01621 857179)

Quilting Group – 1st & 3rd Friday (1-4 p.m.)

Contact Suzanne Benbow (01621 868610)

Line Dancing – Friday evenings

Contact Rosie Grimwade (Tel: 07802 322868)

Friends of St. Giles' Church – Chairman –

Irene Allen

(Tel: 01621 855447) irenea@lepra.org.uk

Little Oaks Nursery, Langford & Ultling Village

Hall, Maldon Road, Langford CM9 4SS

(01621 788777 or 07910 767226)

www.wheatlandsandlittleoaksnurseries.co.uk

Local History Recorder – Mrs. Irene Allen

(Tel: 01621 855447)

Irenea@lepra.org.uk

Museum of Power, Hatfield Road, Langford

(Tel: 01621 843183)

enquiries@museumofpower.org.uk

www.museumofpower.org.uk

Maldon Golf Club, Beeleigh, Langford,

Maldon, CM9 4SS

(Tel: 01621 853212)

www.maldon-golf.co.uk

Heavenly Supplies Community Shop

St. Giles' Church, Maldon Road, Langford

(Tel: 01621 855447)

Irenea@lepra.org.uk

www.stgileslangford.org.uk

Karate Club – Saturday mornings (0930-1100,

LUVH) Contact Leslie Hart (Tel: 01376 584126)

Businesses

Archers Pest Control Services Bumble Bee Cottage, Hatfield

Road, Langford, CM9 6QA

(Tel: 01621 330023); (Mob: 07917 887835)

Email: archerspc@aol.com

C.J. Ashby Forestry Ltd, Willow Barn, Witham Road,

Langford, Maldon CM9 4ST Email: cj@ashby.co.uk

Baytree Kitchen Baytree Cottages, Ultling CM9 6QG

(Tel: 07931 166916) www.baytreekitchen.co.uk

Maypole Clinic: Maypole Clinic [Osteopath] Unit 3, The Barns,

Howells Farm Offices, Maypole Road, Langford, CM9 4SY

(Tel: 01621 850111) info@maypolehealth.co.uk

www.maypolehealth.co.uk

CML Microsystems Oval Park, Langford, CM9 6WG

(Tel: 01621 875500) (Fax: 01621 875606)

group@cmlmicroplc.com www.cmlmicroplc.com

Ernest Doe & Sons Limited

Ultling, Maldon CM9 6QH (Tel: 01245 380311)

www.ernestdoe.com Open Mon-Fri 8-5.30, Sat. 8-4

Essex & Suffolk Water Langford Treatment

Works, Hatfield Road, Langford, Maldon CM9 6QA

Feathered Nest Household sundries

Jeanette Gribble (Tel: 01621 842132) maeldunejoinery@outlook.com

Glenn Mayes, Toastmaster & Independent Celebrant

4 Brockley Cottages, Ultling, CM9 6QX (Tel: 01245 381577);

(Mob: 07826 339498) Email: the.toastmaster@btinternet.com

www.east-anglia-toastmaster.com

Jason Anderson Roofing, Birch Cottage, Maldon Road, Langford,

CM9 6QD (Tel: 01621 843454)

info@j-andersonroofingandupvc.co.uk

www.j-anderson-roofingandupvc.co.uk

Keith Yuill Photographic, White Lodge, Maypole Road, Langford,

CM9 4SX (Tel: 01621 853143) (Fax: 01621 842221)

Kevin Gribble, Joiner

(Tel: 01621 842132) maeldunejoinery@outlook.com

Louise Rich Garden Design, 4 Little Mill Cottages, Maldon Road,

Ultling CM9 6PZ (01245 222966 / 07966 360983)

sales@richgardens.co.uk www.richgardens.co.uk

Landscape Centre, Does Corner, Ultling, Maldon

(Tel: 01245 382161) www.landscapesuppliesdirect.com

Maldon Fruit Supplies, Furzeland Farm Barn, Maypole Road,

Langford, CM9 4SZ (Tel: 01621 859613)

Mill House Hotel, Maldon Road, Langford, CM9 4SS

(Tel: 01621 841518) millhousehotel@uk2.net

www.smoothhound.co.uk/hotels/millhouse-maldon.html

P J Downs and Sons (Boat movers & Showmen)

5 Little Hills, Langford Road, Langford, CM9 4SU

(Tel: 01621 854388) (Fax: 01621 854390) (Mob. 07860 641174)

www.pjdownsandsons.co.uk

Peartree Pantry, Peartree Farm, Spring Lane,

Hatfield Peverel, CM3 2JW (Tel: 01245 381461)

R. Pipe Insurance, Langford Lee &, 83 High Street, Maldon,

CM9 5EP (Tel: 01621 8556665)

garypipe@hotmail.co.uk / piperoy@aol.com

www.roypipeinsurance.co.uk

Ultling Cattery, Robins, Ultling, CM9 6QS

(Tel: 01245 380852) Ultlingcattery@googlemail.com

www.ultlingcattery.co.uk

Watson Farms, Langford Hall, Witham Road,

Langford, CM9 (Tel: 01621 853083) Watson.farms@virgin.net

Palmer's Property Maintenance Ltd

Contact: Danny Palmer, 3 Little Mill Cottages, Maldon Road, Ultling, Essex, CM96P

Tel: 01245 332233 / 07754 587477

If you would like to contribute an article or other content for future issues of the Newsletter, contact the Editor: **Irene Allen**

Editor's note: If your club, group or business is not listed above, please provide details to me and I will make sure it features in the next issue of the Newsletter.