

Issue No. 15  
Summer 2016

# Langford & Ulting News

## The Bluebell Woods of Langford Grove



Once again, by kind invitation of Mr. & Mrs. Wally Cant, the beautiful bluebell woods of Langford Grove were opened up on Sunday 1<sup>st</sup> May, for charity – this year split between the Essex Air Ambulance and Cancer Research. The weather on the day couldn't have been more wonderful, and showed the bluebells in their best light.

*Hyacinthoides non-scripta*, to give it its latin name, is a bulbous perennial plant, found in Atlantic areas from north-western Spain to the British Isles, and also frequently used as a garden plant (although many gardeners find them a bit invasive for small plots). In spring, *H. non-scripta* produces a nodding, one-sided cluster of 5–12 tubular, sweet-scented violet–blue flowers and long, linear, basal leaves. Bluebells are a species of deciduous (and often ancient) woodland over much of their range, flowering and leafing early before the canopy closes in late spring, and they produce carpets of violet–blue flowers in 'bluebell woods' like Langford Grove.

In the United Kingdom, *H. non-scripta* is a protected species under the Wildlife and Countryside Act 1981. Landowners are prohibited from removing common bluebells on their land for sale and it is a criminal offence to remove the bulbs of wild common bluebells. This legislation was strengthened in 1998 under Schedule 8 of the Act making any trade in wild common bluebell bulbs or seeds an offence, punishable by fines of up to £5000 per bulb. Sadly a more invasive 'Spanish bluebell' (*H. hispanica*) is creeping into the countryside. This bulb produces a paler, less curved version of the English bluebell, and it has little or no scent – not a patch on our beautiful native version.



Fortunately, we know that the 90 acres of bluebells in Langford Grove are safe in the hands of Wally and Paula Cant and will remain for future generations to share and enjoy.

## Editor's Note



What a strange start to 2016 – daffodils out in January, arctic weather in April and, in the same month, what appeared to be spontaneous combustion at the Museum of Power. It just shows you what very odd things happen in a little area like ours. Have you noticed anything odd in your part of our two villages that you would like to share with us? Don't forget, this is YOUR newsletter, so do let me have any items you would like included. You can send them to me at 11 Ulting Lane, Langford, CM9 6QB or email them to me at [irenea@lepra.org.uk](mailto:irenea@lepra.org.uk). Without your input you'll have to put up with my input!

## Future Parish Council Meetings

Don't forget that you are more than welcome to come and attend Parish Council meetings – we're here to serve you after all. The next meetings will be held on: Tuesday 21<sup>st</sup> June, Tuesday 19<sup>th</sup> July, Tuesday 16<sup>th</sup> August and Tuesday 20<sup>th</sup> September. All will be held in Langford & Ulting Village Hall and will begin at 7.30 p.m. Tea and coffee will be served from 7.10 onwards so that if you have any questions or queries before the meeting these can be addressed in a friendly and private manner before the official business of the meeting begins.

## And the Parish Bouquet goes to...



So many people in our two villages do so much, and yet get very little in the way of recognition or praise for their efforts. So we are starting the 'Parish Bouquet' where we publicly recognise a person and all that they have done for the residents of Langford and/or Ulting.

The first Parish Bouquet goes to Mrs. Jenny Clemo, for her 25 years as Clerk to the Parish Council. Jenny keeps us all grounded in our various roles and up to the mark with rules and regulations and current legislation. She has been a prime mover in the Neighbourhood Plan and gives far more time to her job as Clerk than she is officially paid for, which shows a real devotion to both Langford and her own parish of Ulting. So, we would like to present her with the very first Parish Bouquet as a 'thank you' for all she has done and, we hope, will continue to do for our two communities.

Would you like to nominate someone for the next Parish Bouquet? Please send your nominations, and reasons for nominating them, to me - details as above. Let's thank those who make our lives better.

## Chairman's Report 2016

To me, this year seems to have passed extremely quickly whereas items and projects pursued by the Parish Council are somewhat slow to come to fruition and, at times, can take whole four year terms or more to reach a conclusion or outcome.

One such item is the long running and ongoing problem with flooding outside the Old School House in Ulting. Alan Robinson has been trying to get a satisfactory outcome to this problem for a very long time as have the Parish Council and it would appear that we have, finally, reached an almost 'eureka' moment. We have, however, been successful, albeit with a much smaller matter, and I am able to tell you that the speed indicator by the old salt heap layby on the B1019, heading towards Hatfield Peverel, now seems to be working. Perseverance pays!

The Neighbourhood Plan continues on its way. On receiving the Inspector's Report we have had a very good and useful meeting with our two District Councillors, senior members of MDC's planning staff and our Consultant to address the issues raised and have now commenced working on revisions to the original document.

Throughout the year we have dealt with the usual raft of planning applications and the frequency of these gave us cause to change our meetings from six weekly to monthly to be in line with the requirement for us to respond within twenty-eight days. We still find, however, that even increasing the frequency of our meetings does not always manage to tick the twenty-eight day box. If we receive an application after the Agenda for the next meeting has been circulated, it cannot be added to, and we will then have to have an extraordinary meeting to deal with the outstanding application. Following on from the Inspector's Hearing in December on the proposed development by CML at Oval Park, we are still awaiting the decision.

I would like to thank my fellow Councillors for their hard work, dedication and commitment over the past year; it has been a real pleasure to be part of this Parish Council. We have had some difficult and, at times, contentious issues to deal with over the year, but we discuss things frankly and fully to reach consensus and conclusions which is, I think, an excellent way to conduct business. However, I would particularly like to single out Jenny Clemo. She is diligent beyond the call of duty and we would be quite lost without her expertise and knowledge and the wealth of experience she has accumulated over such a long time.

Finally, I would like to thank Councillors Henry Bass and Mark Durham, our two District Councillors, for their help, support and advice over the past year which has been invaluable.

Vicky Anfilogoff, Chairman, Langford & Ulting Parish Council.

Our District Councillor, Mark Durham, has also given a very full and detailed report which, sadly, is too long to be included in full here, but can be viewed on the Parish Council's website ([www.essexinfo.net/langford-ulting](http://www.essexinfo.net/langford-ulting)).



## Business in Focus – Maypole Health



Back or neck problems come to us all at some stage in our lives, and when they do they are, well, to coin a phrase ‘a pain in the neck’, so it is wonderful to know that there is a friendly and highly competent team of practitioners in our locality that will sort them out for us.

Osteopathy, an holistic system of medicine, which dates back to the 1800s, is a way of detecting, treating and preventing health problems by moving, stretching and massaging a person’s muscles and joints, and addresses pain via the body’s nervous system ‘allowing the body to use its own self-healing mechanism to restore balance and harmony.’ This is done to increase the mobility of joints, relieve muscle tension, increase and/or enhance the blood supply to tissues, and helps the body to heal. It’s not just backs and necks that Osteopaths can help you with, Osteopathy can help with a wide range of musculoskeletal symptoms over our entire bodies. In the UK, osteopathy is considered a complementary or alternative medicine (CAM), and is different from conventional western medicine: they use a range of techniques, but don’t use drugs or surgery, and many of us would prefer to avoid either of these if possible.

After qualifying as an Osteopath in 2001, Joanne Cole set up the ‘Blackwater Osteopathic Clinic’, which expanded five years later into larger premises in the Barns at Howells Farm, in Maypole Road. This became better known as the Blackwater Clinic offering a wide range of alternate and holistic services. In September 2015 this excellent little venture became ‘Maypole Health’ - a Complimentary Health Clinic and their work expanded. They now offer a wide range of alternative and complementary therapies, providing a holistic and multi-disciplinary approach to many issues, illnesses and injuries. This understated little Clinic is located just off Maypole Road, between Maldon and Wickham Bishops surrounded, by beautiful countryside, which gives you a sense of well-being and relaxation as soon as you arrive. The staff are all fully qualified, experienced and dedicated professionals who provide advice and treatment most suited to, and effective for each individual, and their tailor-made therapies assess and focus on the exact needs and preferences of their clients. They work with you through the assessment and diagnosis process, finding out what caused the problem in the first place, and any other underlying concerns you may have, then they create a

treatment plan for your needs, and it’s straight down to business to get you back to ‘normality’.

The initial appointment includes a consultation and your first treatment session - the whole appointment lasting approximately an hour. During the consultation a full case history is taken, including details of the symptoms which led you to seek treatment, how long they have been troubling you, possible causes and how they affect your day-to-day activities. You will also be asked about your medical history, any other current health problems and about any medication you are taking regularly. This further information helps in making a diagnosis and an assessment of whether osteopathic treatment is appropriate for you. You will also be asked about activities and lifestyle as these may be relevant to your condition. The examination involves looking at you standing to begin with, observing posture and areas of muscle tension. Your range of movement in the problem area will also be assessed. In many cases the osteopath will examine an area of your back, neck or limbs that you may not realise are related to your symptoms. Other tests like tendon reflexes or blood pressure may be carried out. Depending on the history and examination findings, you will be advised if osteopathic treatment is suitable for your particular problem. Whenever possible, you will also be told how many treatment sessions you are likely to need. Osteopathic treatment can include massage to stretch muscles and release tension, mobilisation and manipulation of joints, postural advice and exercises to carry out at home. The type of treatment may vary at each session, depending on your progress. A follow-up treatment lasts 30 minutes. This includes time to discuss your progress and answer any questions you may have following your initial session.

‘Maypole Health’ consists of a team of male and female practitioners with a staggering range of therapies including osteopathy, cranial osteopathy, dry needling (a form of acupuncture), trigger point therapy (where pain related to a point in the skeleton in not caused by acute local trauma, inflammation or infection is dealt with), sports and remedial massage therapy and rehabilitation therapy and foot health care – a real ‘top-to-toe’ service. There is free parking on site, and they offer varied, flexible opening hours to suit you.

Each practitioner has their own ‘specialities’ and the practice is looking to expand even further with pilates, yoga, personal training and exercise classes, and possibly specialist classes for handicapped children.

Joanne says “Osteopathy is based on the principle that the wellbeing of an individual depends on their bones, muscles, ligaments and connective tissue functioning smoothly together. We believe that no single body part works in isolation and our approach to diagnosis and treatment reflects this.” As someone who has recently benefitted from their healing hands, I can confirm that their friendly team look after you from the moment of contact until you are ‘fixed’ when they hope “not to see you for a long time”!

## Blaze at the Museum of Power



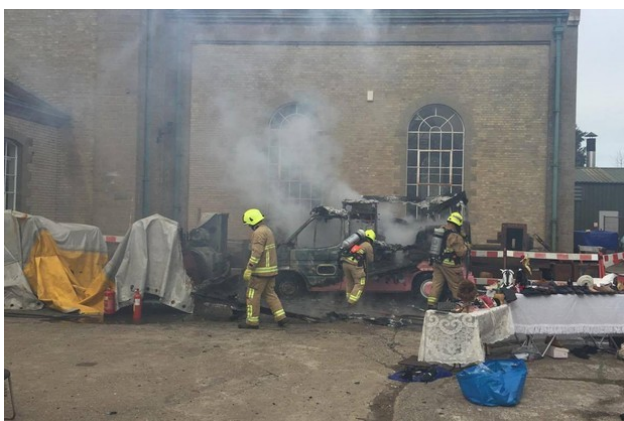
Just after 2 p.m. on Sunday 10<sup>th</sup> April, 2016, firefighters were called to tackle a fierce blaze which had broken out in an ice cream van at the Museum of Power, in Hatfield Road, Langford. They arrived within ten minutes, but a spokesman for Essex County Fire and Rescue Service said “On arrival crews reported the van was 100 per cent alight.” Two Maldon fire crews battled the blaze for 40 minutes, using two hose reel jets and breathing apparatus, and managed to put it out by 2.47 p.m.

A freelance photographer who witnessed the incident, said “We were at a craft fair held at the museum and all of a sudden could smell melting plastic. It was that really sick, awful smell that gives you a headache. We were evacuated out of the building by museum staff for our own safety. They were very organised and got us out really quickly” – confirmation, if needed that those boring ‘fire drills’ are essential for our safety.

The acrid black smoke billowed into the afternoon sky, but the prompt action of the Museum staff and the fire service meant that everyone was back in the building very quickly and no-one was hurt. Fortunately, the owner of the van had jumped out before the fire took hold, so she was safe, but naturally extremely shaken.

Essex County Fire and Rescue said that the blaze was due to overheating in the vehicle caused by an electrical fault. Terry Bradley, director of events at the museum, said the ice cream van was a regular visitor to the museum and thanked the fire service for its quick response.

Our thanks to the Essex Chronicle for the use of their photos.



## And another blaze...

Another fire in the area - although one that was planned – was the lighting of the Great Totham Beacon to celebrate Her Majesty the Queen’s 90<sup>th</sup> birthday on Thursday 21<sup>st</sup> April 2016. Although not strictly speaking anything to do with us, several members of Langford and Ulting attended the ceremony. A chain of around 1,250 beacons were lit on that night, starting at Windsor Castle, which the Queen herself lighted.

Originally the Elizabethans built a chain of beacons as warning signals against the arrival of the Spanish Armada, and they were the ‘high-tech’ method of their day for the widespread transmission of a warning. Since those days these beacons have rather fallen into disuse, but the beacon network was revived in 1988 by Bruno Peek OBE to mark special events. These have witnessed important anniversaries, the turn of the millennium and, of course, the Queen’s Golden Jubilee in 2002.

After a short introduction by the Chairman of Great Totham Parish Council, the National Anthem was sung and a message from Prince Charles was read out. The beacon was lit by the Vice-Chairman of the Parish Council, and everyone sang ‘Happy birthday’ to Her Majesty.

### Events at the Museum of Power

The Museum of Power are running a lot of events this year – too many to quote here. A lot of these events require advance booking – so to ensure you don’t miss out on them, go to the Museum’s website: [www.museumofpower.org.uk](http://www.museumofpower.org.uk) and click on their Events Calendar for full details and booking details. There are some very interesting events going on, so do join in.

### Easy access for non-emergency crime reporting

Whatever you need Essex Police for they want to make it easy for you to do it. For the first time you can report a non-emergency crime to them online. Their [‘do it online’](http://www.essex.police.uk/doitonline) service lets you report non-emergency crime, road traffic collisions and access a range of information and advice easily and conveniently. Online reporting for lost or found property is also included. Essex Police has also subscribed to the national knowledge bank ‘Ask The Police’, which is also accessible at [www.essex.police.uk/doitonline](http://www.essex.police.uk/doitonline). ‘Ask The Police’ contains answers to hundreds of often-asked questions about policing from abandoned vehicles to youth issues. Your burning question may already have an answer waiting for you! Remember though, you still need to dial 999 in an emergency and you can still call their non-emergency number 101.





## Wild swimming at Ulting



The little church at Ulting is, as we all know, a beautiful and peaceful place, and with the water behind it is an idyllic place to visit. But, as with every beautiful place, there are some people who spoil it for everyone else. In the summer the church is a magnet for ‘wild swimmers’ who love to swim and have a picnic on the bank. This in itself is not a problem, but there are those who choose to be disrespectful to the site, especially at very sensitive times like weddings or funerals. Some people leave litter behind, or have picnics on graves, and some have even become aggressive towards those who have been mowing the graveyard.

The ‘Wild Swimming’ website describes it as “...a beautiful stretch of the river Chelmer” and gives its location and suggestions of where to swim, but it also states “...**please do not swim from the churchyard.**” However, one person who had clearly ignored this advice, posted a message on the site suggesting that parishioners needed to ‘get a life’ and went on to protest that we don’t own anything here on this earth, and were only borrowing it whilst we were alive, and rounded off her rant by saying ‘shrouds don’t have pockets!’ One can only wonder what her viewpoint on land ownership would be if hordes of people suddenly turned up in her back garden one sunny afternoon to have a picnic!

Nobody wants to be a killjoy and we are only too pleased to boast about the beauty of our countryside here, but a little respect for what is, after all, a burial ground, should be exercised. Perhaps it should also be pointed out that the ‘ownership’ of the churchyard is vested in the incumbent (the Vicar or Rector) for the use of the parishioners (in a vacancy the ‘ownership’ is vested in the Diocesan Bishop) and therefore is, strictly speaking ‘owned’.

## Where Does Your Water Go? Project

Keeping with the topic of water, Langford and Ulting have been invited to take part in a project to map ordinary watercourses within the parishes. The project will run from September to May and we would need six volunteers to take part in this. Training will be given, which will take an afternoon at the end of August/early September. If you feel you would like to

take part in this very interesting project, do let the Parish Clerk know and we can get a team together.

We have so many watercourses in our parishes – rivers, canals, streams and, of course, ditches – each of which plays a different role. Ditches, often overlooked as a vitally important conduit to drain water from low-lying areas alongside roadways or fields, have been part of the English countryside since Anglo-Saxon times. These man-made structures are formed by digging a trench and using the dug out soil to form a bank alongside it.

But unfortunately, ditches are yet another of the UK’s threatened habitats. They are rapidly deteriorating in quality due to a range of issues, including: agricultural pollution, unsuitable water level management and neglect. One of the biggest problems is wholesale clearance of ditches, which is still common practice in many agricultural areas. However, until recently there has been little research and therefore a lack of understanding in regard to the effect of these issues on ditches and the rare species they harbour. Ditches are essential tools to remove excess water from agricultural fields or urban spaces to avoid flooding and, in conjunction with hedges planted on the headland, lessen the threat of soil erosion and the spread of water pollution that happens with direct surface runoff. Sadly, a great many of the hedgerows in our parishes were grubbed up in the late 1960s/early 1970s ‘to make the fields bigger’. However, many of us can remember the loss of soil and deep snowdrifts that resulted, not to mention the incredible loss of habitats for birds and small mammals.

So, come and join in and find the local water courses in your part of the parish – you may be surprised at what you find!

## Update on the ‘Cowshed Club’



Following deliberations by interested ladies in our parishes, the ‘Cowshed Club’ was inaugurated on Thursday 25<sup>th</sup> February with a very successful, and most enjoyable, Cheese and Wine evening, and has had an Easter event and a speaker in the two months following. Don’t worry if you missed out on these – the club is very happy to welcome more members if you would like to join. The subscription is £20 per year, plus £2 per meeting to cover the cost of tea/coffee and hire of the hall. A membership card will be issued. Meetings are held once a month (except August) from 7.45 for two hours on a Thursday. There is a very interesting programme lined up for the Club, so come and join us and meet other ladies in the village. All ages are welcome. For more information and an enrolment form, contact either Mary Ashby ([cj@ashby.co.uk](mailto:cj@ashby.co.uk)) or Jeanette Gribble ([maeldunejoinery@outlook.com](mailto:maeldunejoinery@outlook.com)). Come and be part of the Moovers (sorry about that!) and shakers of the village.

## Stock Hall Farm, Ulting



Stock Hall, is a beautiful but well-hidden gem of a building on the border between Langford and Ulting. The farmhouse is a late 15<sup>th</sup> or early 16<sup>th</sup> century timber framed house comprising a two-storey cross wing and two bays of a hall. The hall was raised and a floor inserted probably in the 17<sup>th</sup> century, and extended to the east for two further two-storey bays.

According to the historian Philip Morant in his *History of Essex* of 1768, the first mention of Stock Hall by name is in an old legal document of 1319, when John de Ulting held the property.

Robert Francis was paying Land Tax for Stock Hall in 1781 – the earliest date that the Land Tax records are available for Ulting – however a baptism of Kitty Francis is recorded at Ulting Church in 1772, and baptisms and burials of the children of Robert and his wife Mary continue in the Ulting registers until 1789. Robert then appears to move to Heybridge, and his son (also called Robert) is farming not only Stock Hall, but Beavis Hall as well by 1820. His youngest son, Thomas, succeeded him at Stock Hall and, according to the Essex Directories was still farming there in 1881. Stock Hall seems to have been bound up with the fortunes of Langford Hall, as both ended up in the hands of the Wescomb family, who were Lords of the Manor of Langford and in 1816 their lands included ‘Stoke-hall’. When the Tithe Map was made in 1841, the Wescomb executors were recorded as being the owners of the farm.

By 1885, Walter and Sophia Grout (and some of their 21 children) were at Stock Hall. In the picture below Sophia is on the right.



Walter Grout and his wife died on the same day in 1926, and are buried in Langford Churchyard. The Chalk family bought the farm from the owners (now Lord Byron through a Wescomb-Byron marriage – see Issue 14) in the early 1930s.

The Farmhouse was originally included in the Ministry of Housing and Local Government Provisional List of 1953 as a Grade III building. The structure was upgraded by the Secretary of State, following the serving of a Building Preservation Notice on 11<sup>th</sup> December, 1973. The farm and its 130 acres had been sold to The Claydon Trust, a farming organisation in 1972. The house was occupied until 1973 when it became vacant because with the reorganisation of the farm, the new farm manager was housed elsewhere on land owned by the Trust. Shortly afterwards the parish saw severe flooding when water from the river reached and partly surrounded the eastern end of the house.

Stock Hall was listed Grade II on 11<sup>th</sup> December 1973, and on 12<sup>th</sup> October 1977, an appeal, lodged by the Claydon Trust to demolish the building was refused as it was deemed ‘...an important feature in the rural landscape and also is of considerable architectural and historical interest, therefore it is considered that this demolition which is not justified, would result in the deterioration of the visual quality of the area and also reduce the importance of the historical associations that the presence of this building provides to this area in general.’

It was also considered that although the Farmhouse had undergone alterations since its conception, these had not detracted from its character. It was still a fine example of a Hall House showing dateable extensions, reflecting the skills, styles, materials and traditions of those times, and it had views across open country which many people would envy, and that it was an interesting and attractive farmhouse which was not in a derelict condition, nor was it beyond economic repair. Indeed, the Society for the Protection of Ancient Buildings felt that its present form reflected the typical development of an Essex farmhouse which had a documented history stretching back at least 600 years. Also, the history of this building illustrated many aspects of the social and economic history of Essex, including the changing systems of land tenure and inheritance, as well as the flourishing and decline of the manor as an economic unit; it also demonstrated the close link between Stock Hall Farm itself and some of the more important families in the history of this country.

So the Claydon Trust sold the property in 1978 to Chris and Caroline Spong, the current owners, who spent years of love and devotion bringing the building up to the excellent standard it is today, and another beautiful old building was saved from the bulldozer.



**Langford & Ulting Parish Council  
Accounts Summary 2015/2016**

**Income**

2014/2015		2015/2016
6562	Precept	6510
1	Rent	1
6	Interest	8
8138	Grants	7741
1792	VAT refund	1120
<b>16499</b>	<b>Total Income</b>	<b>15380</b>

**Expenditure**

2014/2015		2015/2016
2428	Administration	3255
-	Election	398
1014	Newsletter	1014
802	Streetlights	557
1125	Churchyards/Grass Cutting	713
7538	Neighbourhood Plan	5184
1813	VAT	1266
<b>14720</b>	<b>Total Expenditure</b>	<b>12387</b>

**Bank**

2014/2015		2015/2016
9614	Balance at 1 <sup>st</sup> April	11393
16499	Add Total Income	15380
(14720)	Less Total Expenditure	(12387)
11393	Balance at 31 <sup>st</sup> March	14386

**The 'Aaaahh' Factor**



Seen recently in the field by Luards Farm in Langford, these beautiful little lambs and their mothers were huddled together under a tree in the early morning sunlight. We so rarely see such a lovely sight as this and it seemed worth sharing it with you. Another picture I had hoped to capture on my 'phone was an enormous hare who was loping his way down Ulting Lane, but having caught sight of me with two dogs, he stopped dead in his tracks then turned and fled into the undergrowth – a wonderful sight.

Do you have any 'Aaaahh' photos you would like to share? Do send them or email them to me and we will include them in the next available issue.

**PLACES OF WORSHIP**  
**St. Giles' Church, Langford**  
 Rev. Peter Low – 01621 841274  
 Email: [Revpeterlow@sky.com](mailto:Revpeterlow@sky.com)  
[www.stgileslangford.org.uk](http://www.stgileslangford.org.uk)  
 Services at 9 a.m. every week  
 1<sup>st</sup> Sunday – Holy Communion  
 2<sup>nd</sup> Sunday – Matins  
 3<sup>rd</sup>, 4<sup>th</sup>, 5<sup>th</sup> Sunday – Holy Communion

**All Saints Church, Ulting**  
 Rev. Stephen Northfield – 01245 380958  
 Email: [SRNorthfield@aol.com](mailto:SRNorthfield@aol.com)  
 Services of Holy Communion at 9 a.m. on the  
 1<sup>st</sup>, 3<sup>rd</sup> and 5<sup>th</sup> Sundays of the month

**Naturally Speaking**

Our resident ornithologist, Jock Agnew writes:

“The summer migrants are back – anyone not yet heard the cuckoo? The tree-lined path, the Permissive Path (alongside the Waterworks in Langford), is almost raucous with the sound of Chiff Chaffs (first heard in early March) and Blackcaps. More Blackcaps than ever are now wintering in Britain: we had one in our garden in January this year. The river banks are, of course, the best places to hear the chattering song of the Sedge Warbler – and very often in the same area the unmistakeable and slightly harsh bursts of song from the occasional Whitethroat.

Rabbits are fewer in numbers in our part of Langford, and I have not seen one with Myxomatosis for several years now. Badgers seem to be thriving, and there may be a link between the Badgers and this reduction of numbers in the rabbit population – Badgers have, in other parts of the country, taken to robbing the warrens each spring to add very young rabbits to supplement their diet, and this may well be happening here.

To move away from that rather sombre thought, here is a one-question quiz: which summer visitor to our shores beats its wings alternately, like a canoe paddling its way upstream?

**Answer:** The Swift

NB – if any readers have news or views on the local wildlife in the area, the Editor would love to hear from them.”

Don't forget this is your newsletter, so do let us have any items you would like included. Items from Ulting will be especially welcome.

## Clubs, Societies and Voluntary Bodies

### Parish Council

[www.essexinfo.net/langford-ulting/](http://www.essexinfo.net/langford-ulting/)

**Chairman** – Vicky Anfilogoff

(Tel: 01621 840532) [anfilogoff@gmail.com](mailto:anfilogoff@gmail.com)

**Vice-Chairman** – (and Newsletter Editor)

**Irene Allen** – (Tel: 01621 855447),

[Irenea@lepra.org.uk](mailto:Irenea@lepra.org.uk)

**Councillors:**

Colin Ashby (Tel: 01621 858618), [cj@ashby.co.uk](mailto:cj@ashby.co.uk)

John Clemo (Tel: 01245 380852),

[mojoclemo@gmail.com](mailto:mojoclemo@gmail.com)

Kathy Palmer (Tel: 01245 382417)

[Katherinpalmer@live.co.uk](mailto:Katherinpalmer@live.co.uk)

**Clerk** – Jenny Clemo (Tel: 01245 380852)

[Ultingcattery@gmail.com](mailto:Ultingcattery@gmail.com)

or visit [www.essexinfo.net/langford-ulting](http://www.essexinfo.net/langford-ulting)

### Village Hall Committee

John Tomlins (Chairman 01245 380359)

Vicky Anfilogoff (Secretary 01621 840532)

Mary Stoddart (Bookings 07519 360788)

[langfordultingvh@gmail.com](mailto:langfordultingvh@gmail.com);

[www.essexinfo.net/langfordultingvh](http://www.essexinfo.net/langfordultingvh)

Members: Albert Chaplin,

Peter Downs, Cilla Driver, Sally Marks,

Merle Pipe, Caroline Spong

**Bowls Club** – Monday eve & Wednesday afternoon

Contact Albert Chaplin (Tel: 01621 857179)

**Quilting Group** – 1st & 3rd Friday (1-4 p.m.)

Contact Suzanne Benbow (01621 868610)

**Line Dancing** – Friday evenings

Contact Rosie Grimwade (Tel: 07802 322868)

**Friends of St. Giles' Church** – Chairman –

Irene Allen

(Tel: 01621 855447) [irenea@lepra.org.uk](mailto:irenea@lepra.org.uk)

**Little Oaks Nursery**, Langford & Ulting Village

Hall, Maldon Road, Langford CM9 4SS

(01621 788777 or 07910 767226)

[www.wheatlandsandlittleoaksnurseries.co.uk](http://www.wheatlandsandlittleoaksnurseries.co.uk)

**Local History Recorder** – Mrs. Irene Allen

(Tel: 01621 855447)

[Irenea@lepra.org.uk](mailto:Irenea@lepra.org.uk)

**Museum of Power**, Hatfield Road, Langford

(Tel: 01621 843183)

[enquiries@museumofpower.org.uk](mailto:enquiries@museumofpower.org.uk)

[www.museumofpower.org.uk](http://www.museumofpower.org.uk)

**Maldon Golf Club**, Beeleigh, Langford,

Maldon, CM9 4SS

(Tel: 01621 853212)

[www.maldon-golf.co.uk](http://www.maldon-golf.co.uk)

**Heavenly Supplies Community Shop**

St. Giles' Church, Maldon Road, Langford

(Tel: 01621 855447)

[Irenea@lepra.org.uk](mailto:Irenea@lepra.org.uk)

[www.stgileslangford.org.uk](http://www.stgileslangford.org.uk)

**Karate Club** – Saturday mornings (0930-1100,

LUVH) Contact Leslie Hart (Tel: 01376 584126)

## Businesses

**Archers Pest Control Services** Bumble Bee Cottage, Hatfield

Road, Langford, CM9 6QA

(Tel: 01621 330023); (Mob: 07917 887835)

Email: [archerspc@aol.com](mailto:archerspc@aol.com)

**C.J. Ashby Forestry Ltd**, Willow Barn, Witham Road,

Langford, Maldon CM9 4ST Email: [cj@ashby.co.uk](mailto:cj@ashby.co.uk)

**Baytree Kitchen** Baytree Cottages, Ulting CM9 6QG

(Tel: 07931 166916) [www.baytreekitchen.co.uk](http://www.baytreekitchen.co.uk)

**Maypole Clinic:** Maypole Clinic [Osteopath] Unit 3, The Barns,

Howells Farm Offices, Maypole Road, Langford, CM9 4SY

(Tel: 01621 850111) [info@maypolehealth.co.uk](mailto:info@maypolehealth.co.uk)

[www.maypolehealth.co.uk](http://www.maypolehealth.co.uk)

**CML Microsystems** Oval Park, Langford, CM9 6WG

(Tel: 01621 875500) (Fax: 01621 875606)

[group@cmlmicroplc.com](mailto:group@cmlmicroplc.com) [www.cmlmicroplc.com](http://www.cmlmicroplc.com)

**Ernest Doe & Sons Limited**

Ulting, Maldon CM9 6QH (Tel: 01245 380311)

[www.ernestdoe.com](http://www.ernestdoe.com) Open Mon-Fri 8-5.30, Sat. 8-4

**Essex & Suffolk Water** Langford Treatment

Works, Hatfield Road, Langford, Maldon CM9 6QA

**Feathered Nest** Household sundries

Jeanette Gribble (Tel: 01621 842132) [maeldunejoinery@outlook.com](mailto:maeldunejoinery@outlook.com)

**Glenn Mayes, Toastmaster & Independent Celebrant**

4 Brockley Cottages, Ulting, CM9 6QX (Tel: 01245 381577);

(Mob: 07826 339498) Email: [the.toastmaster@btinternet.com](mailto:the.toastmaster@btinternet.com)

[www.east-anglia-toastmaster.com](http://www.east-anglia-toastmaster.com)

**Jason Anderson Roofing**, Birch Cottage, Maldon Road, Langford,

CM9 6QD (Tel: 01621 843454)

[info@j-andersonroofingandupvc.co.uk](mailto:info@j-andersonroofingandupvc.co.uk)

[www.j-anderson-roofingandupvc.co.uk](http://www.j-anderson-roofingandupvc.co.uk)

**Keith Yuill Photographic**, White Lodge, Maypole Road, Langford,

CM9 4SX (Tel: 01621 853143) (Fax: 01621 842221)

**Kevin Gribble, Joiner**

(Tel: 01621 842132) [maeldunejoinery@outlook.com](mailto:maeldunejoinery@outlook.com)

**Louise Rich Garden Design**, 4 Little Mill Cottages, Maldon Road,

Ulting CM9 6PZ (01245 222966 / 07966 360983)

[sales@richgardens.co.uk](mailto:sales@richgardens.co.uk) [www.richgardens.co.uk](http://www.richgardens.co.uk)

**Landscape Centre**, Does Corner, Ulting, Maldon

(Tel: 01245 382161) [www.landscapesuppliesdirect.com](http://www.landscapesuppliesdirect.com)

**Maldon Fruit Supplies**, Furzeland Farm Barn, Maypole Road,

Langford, CM9 4SZ (Tel: 01621 859613)

**Mill House Hotel**, Maldon Road, Langford, CM9 4SS

(Tel: 01621 841518) [millhousehotel@uk2.net](mailto:millhousehotel@uk2.net)

[www.smoothhound.co.uk/hotels/millhouse-maldon.html](http://www.smoothhound.co.uk/hotels/millhouse-maldon.html)

**P J Downs and Sons** (Boat movers & Showmen)

5 Little Hills, Langford Road, Langford, CM9 4SU

(Tel: 01621 854388) (Fax: 01621 854390) (Mob. 07860 641174)

[www.pjdownsandsons.co.uk](http://www.pjdownsandsons.co.uk)

**Peartree Pantry**, Peartree Farm, Spring Lane,

Hatfield Peverel, CM3 2JW (Tel: 01245 381461)

**R. Pipe Insurance**, Langford Lee &, 83 High Street, Maldon,

CM9 5EP (Tel: 01621 8556665)

[garypipe@hotmail.co.uk](mailto:garypipe@hotmail.co.uk) / [piperoy@aol.com](mailto:piperoy@aol.com)

[www.roypipeinsurance.co.uk](http://www.roypipeinsurance.co.uk)

**Ulting Cattery**, Robins, Ulting, CM9 6QS

(Tel: 01245 380852) [Ultingcattery@googlemail.com](mailto:Ultingcattery@googlemail.com)

[www.ultingcattery.co.uk](http://www.ultingcattery.co.uk)

**Watson Farms**, Langford Hall, Witham Road,

Langford, CM9 (Tel: 01621 853083) [Watson.farms@virgin.net](mailto:Watson.farms@virgin.net)

**Palmer's Property Maintenance Ltd**

Contact: Danny Palmer, 3 Little Mill Cottages, Maldon Road, Ulting, Essex, CM96P

Tel: 01245 332233 / 07754 587477

If you would like to contribute an article or other content for future issues of the Newsletter, contact the Editor: Irene Allen

**Editor's note:** If your club, group or business is not listed above, please provide details to me and I will make sure it features in the next issue of the Newsletter.