

HATFIELD PEVEREL

VILLAGE VOICE



NEWS & EVENTS FROM AROUND
THE VILLAGE



CONTENTS

Welcome from the Chairman.....	2
Parish Council News.....	3
Hatfield Peverel Village Hall – What’s on?.....	5
Churchill's Secret Army	7
News of Neighbourhood Development Plan... ..	9
Peverel Wine Club.....	10
Hadfelda (Ladies Group).....	10
The National Vegetable Society	11
A success for Christmas tree recycling	13
Hatfield Peverel Flower Club	14
How to report a Highways related fault	15
Hatfield Peverel St. Andrew’s Junior School ..	16
Maldon Film Club – What Next?.....	17
Wildlife Champion Update.....	18

USEFUL INFORMATION

Hatfield Peverel Parish Council
Committees and advisory groups
Local Information and Contacts

Credits: front cover - Nick Hobbs
 Editor: Janice Fitzpatrick
communications@hatfieldpeverelpc.com

Publisher: Andrew Smith Print Ltd
andrew@asmithprint.co.uk

Copy for March issue to be supplied by February 14th 2024 to
communications@hatfieldpeverelpc.com
 Format: word document (doc.x) including url links – max 500 words; photos to be supplied as separate jpeg files.f

WELCOME FROM THE CHAIRMAN!

Dear Residents

I am delighted to extend a warm welcome to you all as we unveil the inaugural edition of our brand-new e-magazine, brought to you by Hatfield Peverel Parish Council. It is with great excitement and anticipation that we present this digital publication, which aims to inform, engage, and connect our vibrant community.

As we embark on this new digital journey, it is important to acknowledge the invaluable contributions of Jackie and Ken Earney, the dedicated editors of The Review. For many years, The Review has been a cherished publication, offering a glimpse into the life and happenings of our parish. Jackie and Ken’s commitment to excellence and their passion for community journalism has left an indelible mark on our village, and we owe them a debt of gratitude for their tireless efforts.

With the transition to our new e-magazine, we pay tribute to the legacy of The Review while embracing the opportunities that digital media presents. We hope that this new platform will serve as a dynamic and interactive forum for sharing news, stories, and updates from our community.

We hope that you enjoy reading this e-magazine. Your feedback and suggestions are always welcome as we strive to make this publication a true reflection of the vibrant spirit of Hatfield Peverel.

Thank you once again for your support, and here’s to many more editions of our e-magazine!

Cllr Mark Weale, Chairman of Hatfield Peverel Parish Council



Jackie and Ken Earney

Parish Council News

February 2024

Welcome!

We would like to offer a huge welcome to our new Communications Officer, Janice Fitzpatrick. Janice is responsible for pulling together this new publication, along with looking after our social media and website communications. If you'd like to get in touch with her, please email communications@hatfieldpeverelpc.com

Christmas in the Park

Thank you to everyone who joined us for the magical Christmas in the Park event in December! Our thanks go out to everyone who came along, bringing the festive cheer and making the day wonderful. A special acknowledgement goes to all the volunteers and contributors who worked tirelessly to bring this event to life. Your hard work was much appreciated. Look out for further information about Party in the Park in July!



What is the Parish Council working on?

The Parish Council is working hard to enhance our community. Your input and support are much appreciated, and we're committed to making Hatfield Peverel an even better place to live. Current plans include:

Section 106 Fund Allocation

We're investing Section 106 funds to address community needs. Projects on the horizon include:

Allotment Enhancements: New fencing, creating a well-defined space for our dedicated gardeners.

Footpaths: Improvements to the surfacing and accessibility of Footpaths 7 and 18, promoting a pedestrian-friendly environment.

Nounsley Playing Field: New play equipment, including a thrilling zip wire, is set to make the Nounsley playing field an even more enjoyable space for our younger residents.

Tennis Courts: We're awaiting the outcome of our planning application. These courts would provide additional recreational opportunities for residents of all ages, contributing to a healthier and more active community.

Community Park Vision Plan

A dedicated committee is hard at work crafting a vision plan for a future community park. We envision a park that supports diverse recreational opportunities, offers a space for mental and physical wellbeing that values and protects local rural heritage, and enhances biodiversity, allowing native plants, trees and wildlife to thrive. We usually hold committee meetings on the fourth Monday of the month at the Village Hall. The public is welcome to attend – keep an eye out for the agenda which will be published the week before.

Village Noticeboards

If you have any community notices that you would like displayed on the Parish Council's noticeboards, please deliver them to the Parish Council office at the Village Hall where staff will arrange this. Notices that will be displayed must be of benefit or interest to the community. Commercial advertising will not be permitted, and all notices will be displayed at the discretion of the Clerk or Assistant Clerk.



Crime Concerns

Please remember you can call 101 for crime prevention advice or to report a crime that does not need an emergency response. It is very important to report crime to the Police so that they can build up a 'picture' of what is happening in the area.

The Parish Council is working in partnership with Essex Police to recruit two Special Constables. If you are interested in applying to be a voluntary Police Officer for the village, please see our website for further information and the answers to frequently asked questions:
<https://www.hatfieldpeverelpc.com/special-constable-recruitment/>

Planning

Planning decisions are made by Braintree District Council, following consultation with residents, the Parish Council, and other agencies where necessary. For information on what planning applications have been received, granted and refused by Braintree District Council, please see:
https://www.braintree.gov.uk/info/200225/search_and_track_planning_applications/592/weekly_lists

Social Media

Please follow the Parish Council on social media for news and updates:

Facebook: @hatfieldpeverelpc

X: @HatPevPC

The Parish Council's Social Media policy can be viewed on its website:

<https://www.hatfieldpeverelpc.com/policies-and-procedures/social-media-policy/>

Don't forget you can view all Parish Council news on the website: <http://www.hatfieldpeverelpc.com>

Get involved!

The next meeting of the Parish Council will take place on Monday 4th March 2024 in the Vic Olley Room at the Village Hall. Public participation is welcome, please see the agenda which is published on the Parish Council website and on the noticeboard outside the Parish Council office.

Sarah Gaeta, Parish Clerk; **Carly Truman**, Assistant Clerk

Parish Council Office, Village Hall, Maldon Road, Hatfield Peverel, CM3 2HP Tel 01245 382865.

Email: parishclerk@hatfieldpeverelpc.com or assistantclerk@hatfieldpeverelpc.com

HPVH – Hatfield Peverel Village Hall – What's on?

We started our 2024 events with a fabulous gig from the all-female *Diva Purple*. We'll be bringing them back in 2025, in the meantime we have music or theatre productions booked every month, including *The Jam Project* on February 24th and *Quo'd* on March 30th. Get your tickets at www.ticketmaster.co.uk/hatfield-peverel-village-hall.

We have a fantastic range of activities and clubs for children, including **Hot Steps Dance**; **Kazen Kai Karate**; **Tuesday Toddler Time**; **Little City**; **New Naw** and **Trainmaster**. We also have a great range of Children's events booked for half term, including a crafts and slime session from **Let's Get Crafty**.

There's plenty for adults as well, including **Bingo**, **Table Tennis**; **Badminton**; **Latin Dance**; **Dancercise**; **Dog Training**; **Country Dancing** with the **Caledonian Society** and more. **The Coffee Lounge** is open every day from 9-5 and Sundays 10-4 and has some fantastic breakfast and lunch options as well as lovely cakes, tea, coffee, and ice creams. Check out the Clubs Page on our [website](http://www.hatpevvhall.org), follow our [Facebook page](https://www.facebook.com/hatfieldpeverelvillagehall), or join the mailing list.

Help us put on more activities for the community; we'd love to run Bridge & Card games, a Youth club and a dining club, but need your help to get these up and running. If you can spare an hour or two each week or want to join the management committee, please get in touch with an email to secretary@hatpevvhall.org or call us on 0300 102 0473.



<p>Live on stage at HPVH</p> <p>The Jam PROJECT</p> <p>Hatfield Peverel Village Hall Saturday, Feb 24th Doors : 7pm Band : 8pm Tickets : £15 from :- www.ticketsource.co.uk/hatfield-peverel-village-hall</p>	<p>Coming soon to HPVH</p> <p>Tickets from :- http://tinyurl.com/HPVH-Tickets</p>	<p>Quo'd</p> <p>Hatfield Peverel Village Hall Saturday, Mar 30th Doors : 7pm Band : 8pm Tickets : £15 from :- www.ticketsource.co.uk/hatfield-peverel-village-hall</p>
<p>Bob Drury's Viva NEIL DIAMOND UNPLUGGED</p> <p>SATURDAY 18 MAY</p> <p>Hatfield Peverel Village Hall Maldon Road, CM3 2HP Doors 7pm Starts 8pm Tickets £15 - £15 Book online at ticketsource.co.uk/hatfield-peverel-village-hall</p>	<p>AN EVENING OF LIVE MUSIC IN TRIBUTE TO: THE BEATLES</p> <p>Come and listen to the fab sounds of The Beatles performed by: Glass Onion</p> <p>Live band stage performance, appearing at: Hatfield Peverel Village Hall Maldon Road, CM3 2HP Saturday 27th April 2024</p> <p>Tickets: £15 Doors open 7pm, hall 7.30pm, band 8pm www.ticketsource.co.uk/hatfield-peverel-village-hall</p>	<p>The Pantaloons present The Importance of Being Earnest</p> <p>Sunday, June 9th Hatfield Peverel Village Hall Doors: 2:30 Show: 3:00 Tickets: £12-£15 www.ticketsource.co.uk/hatfield-peverel-village-hall</p>

Information & Contacts

Stay in touch by signing up to our mailing list (click the link on the website home page or scan the code above). For event tickets and room bookings email bookings@hatpevvhall.org or call the Box office & room bookings number on **0300 102 0473**

All details on our website (www.HatPevVHall.org), on the village hall noticeboards and on Facebook at www.facebook.com/hatfieldpeverelvillagehall

Half Term at HPVH



Tuesday, Feb 20th

<http://tinyurl.com/HPVH-Tickets>



Wednesday, Feb 21st

<https://linktr.ee/littlecitychelmsford>



Thursday, Feb 22nd

www.trainmaster.co.uk



Clubs & Activities at the Village Hall



Badminton Mondays 7pm 	HotSteps Mondays 3:30pm Wednesdays 5:30pm 	EMC Lunch club Wednesdays 1-3pm 	Table Tennis Tuesdays 7:30pm (Sep-Apr)
Tuesday Toddler Time Tuesdays 9:30am 	NeeNaw Monthly, Wednesdays 	Train Master Monthly - Thursdays 	Little City 3rd Wednesday of the month 9:30am
Kazen Kai Karate Thursdays 3:45 	Everybody Move Bootcamp Wednesdays, 6:30-7:30 	Methodist Church Sundays 9:15am 	Dancematic Latin Dance Fridays 2pm
Shining Stars Childcare Weekdays 7am-6pm 	Dog Star Dog Training Thursdays 6pm 	Caledonian Soc Wednesdays, 7:30 	Stitch to Enrich 1st and 3rd Thursday 2-4pm
Flower Club 1st Weds of the month 7:30pm 	Bingo 1st & 3rd Friday of the month: 7 - 10pm 	Essex Tai Chi Academy Saturdays 9:30-12:30 	Wine Club 2nd Weds of the month 7:30pm

For club information, go to the Clubs page on our Website.

www.HatPevVhall.org

Tel: 0300 104 0473

Email: Enquiries@HatPevVhall.org

Churchill's Secret Army

Hatfield Peverel and Terling Auxiliary Patrols



Churchill's Secret Army Auxiliary Unit demob badge

Early in World War II, Winston Churchill and senior military officers realised the importance of a well-trained and armed resistance, as had been effective in France and Holland. From those early thoughts evolved Churchill's Secret Army of Auxiliary Units – teams of local men who would hide from an

invading army and surface behind them to conduct acts of sabotage to hinder the invader's inevitable move towards London.

Details of this highly secret operation are slowly being revealed. Representatives of the British Resistance Archive and The Coleshill Auxiliary Research Team (CART) are investigating and recording details of Auxiliary Units. They know that teams were recruited from men in Reserved Jobs requiring them to stay behind rather than join the Armed Forces.

The men were sent to a secret headquarters at the Coleshill Estate, near Highworth, Berkshire, for guerrilla warfare training including assassination, unarmed combat, demolition, sabotage, weapons and communications (radio and hidden letter drops). All signed the Official Secrets Act and knowledge of this wartime activity remained largely unheard of until the publication of 'The Last Ditch' by David Lampe, in 1968.

The local Hatfield Peverel Patrol's Operational Base (OB) is believed to have been in a nearby gravel pit. The Terling Patrol had its OB in the woods. From there, they could spy on enemy movements along nearby roads and the Colchester to London railway line. It provided a store for their weapons, munitions and food to survive, hidden underground, while the invaders moved past. With the regular army attacking enemy forces, the patrol would emerge to disrupt the supply lines at their rear. Some of its targets would probably have been the River Ter railway viaduct, culverts under roads, telegraph lines and supply convoys.

It is known that the Patrol members comprised - with details from the 1940's:

- Bernard Smith – Agricultural Costing Clerk - Wyecot, London Road, Hatfield Peverel (died 1988)
- Leslie Creasey – Electrical Fitter - Hurluck, Station Road, Hatfield Peverel (died?)
- Charles Westergate – Smallholder - Bernard & Gates Farm, Nounsley Road, Hat.Pev. (died Sept.1978)
- Dennis George Williams – Tool Draughtsman - Hatfield Place Cottages, Hat.Pev. (died Oct.2008)
- John Thurgood – Clerk – Wat Hobbs Cottage, Terling (died February 2017)
- Lawrence Wager – GPO Engineer – Coffee House, Gambles Green, Terling (died 1987)

DO YOU KNOW ANY OF THESE NAMES, their families or their Operational Base location?



Churchill's Secret Army OB sketch showing entrance and escape tunnel.



Churchills Secret Army OB inside view.

John Thurgood was interviewed in 2004 about his wartime exploits and photographed next to the wooded entrance to the Terling OB. A record of that is printed in *A History of Witham*, by Janet Gyford.

Other local men thought to have been involved were:

- Joseph Wright – Bus Driver – Duke of Wellington Inn
- Thomas Beard – Farming Foreman – 11 Hull Lane, Terling
- Alfred Cloughton – Butcher – Bury Lane, Hat.Pev.
- James Beardell – Butcher – 5 Maldon Road, Hat.Pev.
- Alexander Rogers – Farm Bailiff - Farthings Farm, Terling
- Vivian Sorrell – Butcher – Hill Crest, Hat.Pev.
- Charles Jiggins – Horseman – The Rectory, Normans Hill, Terling

Trevor Williams (mob: 0787 290 7719) will be interested to hear from you. His father, Dennis Williams, was part of the Hatfield Peverel Patrol and recalled that the OB hiding place was discovered when excavating gravel after the war. The farmer had no idea it was on his land. Dennis, whose parents Ernest and Edith were in service for the McCorquodale family at Hatfield Place, was raised in the cottages (demolished for the A12 Bypass) by the River Ter at the bottom of The Street hill and later settled in Great Baddow. He worked for Hoffman Bearings in Chelmsford. Another member, Leslie (Les) Creasey married Ruth(?), who developed a debilitating disease (MS?), and later worked as a groundsman ((possibly for Marconi Sports Club) before moving to Drumnadrochit, Scotland. Any information gathered will be passed to CART, to fill in some of the Auxiliary Patrol activity missing details.

Other local Patrols were recruited and operated in Terling, Boreham, Wickham Bishops and Witham. They acted independently of nearby Patrols to maintain secrecy, communications always being in code up the chain of command.

**DO YOU HAVE KNOWLEDGE OF PEOPLE IN THOSE AREAS
that may be of interest to CART?**

Trevor can provide Patrol member names for those locations.

THE LANGFORD & ULTING ART SHOW

Saturday 23rd & Sunday 24th March 2024
From 10am to 5pm
At Langford & Ulting Village Hall

Entry fee: £2, under 12s enter free
Plenty of free parking

Tea, coffee and homemade cakes available

To find out about entering for the first time, contact
langfordandultingartshow@gmail.com

Closing date for entries is Friday 24th February 2024.

Coffee Lounge

Mondays-Saturdays
9am – 4pm
Sundays
10am-4pm

Teas, Coffees, Hot Chocolate
 Soft Drinks, Cake & Ice-Creams.
 Hot food, Breakfasts and Lunch
 Eat-in and Take-away

Coffee Club Thursdays
9-11am
 All welcome for a chat and a cuppa

News of the Neighbourhood Development Plan

The examination of the Neighbourhood Development Plan is under way, and the Examiner will be visiting the Parish shortly.

Meanwhile he has raised various enquiries with both Braintree District Council and Hatfield Peverel Parish Council all of which have been dealt with.

Please see the examination correspondence by using the link below to BDC's website:

<https://www.braintree.gov.uk/planning-building-control/neighbourhood-planning/5>

The examination correspondence will be added to the Parish Council website shortly. Please use the following link:

<https://www.hatfieldpeverelpc.com/neighbourhood-development-plan/>

From Beauty & The Beast to St Valentine and South America!

Peverel Wine Club

It seems a long time ago now since the Wine Club Christmas Party in the Village Hall, but it is likely to live much longer in our memories as a very special evening. Sixty members and guests enjoyed an excellent 4-course buffet provided by members and the Committee – the wonderful canapés and puddings had to be seen to be believed! To aid our digestion, the supper was followed by dancing to some fairytale live music provided by the magical Beauty & the Beast duo along with some hopeful Abba lookalikes and Elvis impersonators!

January saw us back in the hall for the Club's annual quiz night, with some fiendish questions set by Chairman, Graham Bushby. The competition was both fierce and closely fought, and modesty forbids me to name the members of the winning team! On the other hand, compassion stops me from mentioning the winners of the booby prize, but Bob Hill triumphantly retained his record of previous years!

We are now looking forward to two very different meetings in February and March. February's meeting on St Valentine's Day will have us tasting romantic wines with accompanying nibbles; each tasting will be interspersed with suitably themed entertainments. This promises to be a chaotic but very enjoyable evening.

In March, we are planning a South American Fiesta. The Club will produce one of its legendary 3-course suppers on a South American theme and the wines from several South American countries will be provided by the lovely Neils Dubro of local wine merchants Street Wines (www.streetwines.co.uk). An event not to be missed!

If you'd like to join us for either of these meetings or indeed any other meeting, please give Vee a ring beforehand on 01245 355723 to ensure there is enough food and drink for all. (We normally meet on the second Wednesday of each month but with some exceptions). Our website www.peverelwineclub.co.uk is currently being reviewed, but I can email a copy of the exciting 2024 programme on request.

Peverel Wine Club: Vee Green, Secretary peverelwineclub@hotmail.co.uk



Hadfelda (Ladies Group)

For anyone new to the village, we are a ladies group who meet on the 4th Wednesday of the month at 2pm in St. Andrew's Church Hall, Church Road, CM3 2LE.

We are very friendly and always delighted to welcome visitors to any of our meetings.

The members and guests ended 2023 with a 'bang' at our Christmas meeting in December. We were entertained by 'Turning Heads' a ukulele band who had us singing and clapping along to their music. There was also plenty of festive food and drink (not alcoholic unfortunately) and a good time was had by all.

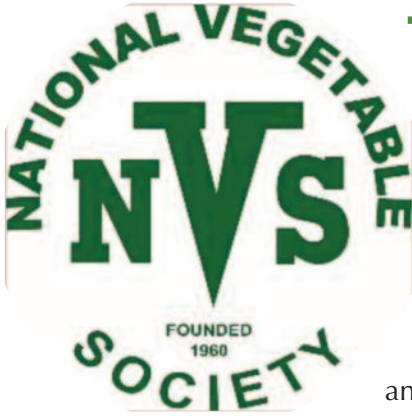
For the first meeting of 2024 we were entertained by our vicar, the Reverend Stephen Northfield. Stephen gave us a fascinating talk about Handel and his rivals and played a selection of music to illustrate some of his points. What an interesting and informative afternoon! As usual we finished with a chat and a cup of tea/coffee and biscuits.

We try to vary our talks as much as possible and below is our programme until June 2024

- February 28th Jacky Lucas – Lasting power of Attorney (competition. A souvenir of school days)
- March 27th Charles Cope – Burma (comp. Something made of wood)
- April 24th Elaine Pye – Knitted Heritage (comp. A piece of handicraft)
- May 22nd Tammy Best – Police Officer talking about Fraud Prevention (comp. A holiday photo)
- June 26th Dot Reed – Decades of Dolls (comp. A favourite item of Jewellery)

If you fancy the sound of any of these speakers, please come along and join us!

Contact Marel Elliston on 01245 380827 for further details.



The National Vegetable Society

The National Vegetable Society has some 2000 members who range from allotment and kitchen garden growers through to some of the top exhibitors in the country. Our aim is to advance the education of the public in the cultivation and improvement of vegetable growing, and to advance knowledge of and increase public interest in vegetables by the publication of information and by providing advice and help to all levels of vegetable growers.

Each year the Society holds veg shows in some DA's, all five branches, and a National Championships covering the whole Society, recognised as one of the premier vegetable shows in the country. In addition, there are various seminars etc. throughout the country and an NVS presence with displays and stands at almost all the major shows and events in the country.

SOUTHERN BRANCH ESSEX DISTRICT ASSOCIATION NEWS

We have around 70 NVS members in Essex, and we would really value your opinions on our programme, welcoming any ideas you have for the 2025 programme. We would also like to say that everyone is welcome at our meetings – members or non- members – so if you know anyone that you feel would be interested in our events, whether they grow for the kitchen or the show bench, are a first-time grower or seasoned gardener – please bring them along!

If you would like any further information about the NVS or would like to share your thoughts and opinions on the Essex DA or NVA society, please contact Emily Harris (details below) or via email at: emily.plumb@btinternet.com You can find additional information about the Society at: www.nvsuk.org.uk

2024 PROGRAMME OF EVENTS

FEBRUARY

Sunday 11th February 2.00pm
Main Hall, Hatfield Peverel Village Hall, CM3 2HP
Tracy Mackness from The Giggly Pig Company shares her story.
Tracy is an Essex bad girl who turned good. She is the owner of the successful "farm to fork" Giggly Pig Company. She is passionate about pigs, farming and the challenges of running a small business.
Light refreshments.
Entry: Members free, Non-members: £2.00

APRIL

Sunday 21st April 2.00pm
Main Hall, Hatfield Peverel Village Hall, CM3 2HP
Stuart Mills speaks on "Alternatives to peat compost"
Stuart has been working for Fargo for several years.
Stuart studied at Hadlow College where he gained an ND in commercial horticulture and was previously the crop protection expert for New Place Nurseries.
Light refreshments.
Entry: Members free, Non-members: £2.00

MAY

Sunday 19th May 2.00pm
Main Hall, Hatfield Peverel Village Hall, CM3 2HP
Vanessa Jones speaks on "A closer look at Asian hornets".
Vanessa is a keen organic grower of vegetables and fruit and a Master Beekeeper. She is interested in all aspects of horticulture and the environment and is inspired by



nature and landscape. The talk will cover the ever-present threat and incursion of the Asian hornet (*Vespa velutina* aka the Yellow-legged Hornet) a non-native species that threatens our pollinators.

Light refreshments.

Entry: Members free, Non-members: £2.00

JULY

Sunday 14th July
Main Hall, Hatfield Peverel Village Hall, CM3 2HP
Mini Show
Judges: TBC
Staging from 11.00am, Judging starts at 12.00pm.
Members and non-members welcome.
Light refreshments

OCTOBER

Sunday 13th October 2.00pm

Main Hall, Hatfield Peverel Village Hall, CM3 2HP

Sandra Hall speaks on "Growing in my polytunnel"

Sandra, our National Lady Chair will be travelling from the Midlands to share the story of her polytunnel and the crops she has been growing there.

Light refreshments. Entry: Members free,

Non-members: £2.00

Competition: one dish of any vegetable, numbers per our Mini Show schedule

**NOVEMBER**

Sunday 24th November 2.00pm

Meeting room 1, Hatfield Peverel Village Hall, CM3 2HP

AGM

Light refreshments provided

OTHER IMPORTANT DATES FOR YOUR DIARY

RHS Tatton Park Show, 17th – 21st July

NVS Southern Branch Show, New Forest Show, 30th July – 1st August

NVS Scottish Branch Show, Duthie Park, 31st August NVS Welsh Branch Show, National Ironworks Centre, Oswestry, 6th September

NVS Northern Branch Show, Newby Hall, 13th – 15th September

NVS National Championships, Ardingly Show, 21st – 22nd September

NVS Midland Branch Show, Malvern Autumn Show, 27th – 29th September

RHS Festival of Flavours Show, Hyde Hall, 4th – 6th October

CHAIRMAN Sherie Plumb Hillside Summerhill Althorne Essex CM3 6BY Tel: 01621 741787

TREASURER Emily Harris 55 Glebe Way Burnham-on-Crouch Essex CM0 8QJ Tel: 01621 333863

SECRETARY Vacant

Registered Charity Number: 1088978

HATFIELD PEVEREL

VILLAGE VOICE

We are always keen to find contributors for our online magazine. If you have a club, society, social group or have a passion for local history or anything on interest you would like to see featured in future editions, please get in touch with our **Communications Officer, Janice Fitzpatrick** at communications@hatfieldpeverelpc.com We will supply you with details of specifications and deadlines for future editions.



A success for Christmas tree recycling

Helen Rollason
Cancer Charity

Over the first weekend of January, a team of volunteers from the Helen Rollason Cancer Charity Centre in Hatfield Peverel, Essex set off around Essex to collect Christmas trees from residents in exchange for a donation to the charity. The trees were then delivered to sites around Essex where they were shredded and recycled. Almost 800 trees were collected, and around £15,000 was raised for the charity. This money will be used to help support local people living with cancer.



Head of Fundraising, Zoe Jay, said, "It was a great achievement. We would like to thank everyone who gave a donation and the amazing volunteers and local businesses that supported us. More than 20 vans were collecting around Essex, and we are so grateful to those that volunteered as drivers and helpers to pick up the trees. We would also like to thank the local businesses that supported us including Beachenlea for shredding the trees, Amazon, Group 1 Audi, Herd Hire, Group 1 Volkswagen and Just Wheels for providing vans, New Hall School, Museum of Power, and Marsh Farm for use of their sites."

Darren Thompson, Franchise Director from Group 1 Volkswagen – our headline sponsor - said, "Here at Group 1 Volkswagen, we have a long-standing relationship with the Helen Rollason Cancer Charity and have supported a number of events and sponsorships. The Christmas Tree Recycling Campaign is another great example of working in and around the local community to help raise money for a good cause, in which we are delighted to be a part."



Aaron from our supporting partner, Marsh Farm, said, "We wanted to support Helen Rollason Cancer Charity as it's a local charity that does amazing work within the community with people affected by cancer. We wanted to support this program and boost awareness especially over the festive period."



The Fundraising Team is now turning their attention to future events, including the popular Ride For Helen cycle ride, Rural Ramble, Open Gardens, and the summer Vintage Fairs. Keep your eyes on the Helen Rollason Cancer Charity website for details of events. Visit <https://www.helenrollason.org.uk/>

The charity supports men and women with all types of cancer at all stages. Information on the types of support offered can be found on their website.

Hatfield Peverel Flower Club



We are a friendly club that meets on the first Wednesday evening of the month (apart from January and August) in the Village Hall where there is good parking. There is a thriving membership, and visitors are always welcome (£7 including refreshments). The evening starts at 7.30 with tea/coffee and biscuits.

Each month we have a demonstrator at 8.00 who shows us five or six creations on a theme. These are then raffled at the end of the evening, so some lucky people go home with a beautiful arrangement.

There are four competitions over the year to encourage everyone to have a go too.

If you've not been to the Club do come and join us and bring a friend.

Further information can be found on our website www.hatfieldpeverelflowerclub.com or contact Jane on 01245 466364 or email Helen on helenopeter@yahoo.co.uk

Hatfield Peverel Flower Club
www.hatfieldpeverelflowerclub.co.uk

Demonstration

“Junk and Jumble”
 by
Crystal Dyball



at
 Hatfield Peverel Village Hall, Maldon Road, CM3 2HP

Wednesday 6th March
 7.30pm for 8.00pm

Refreshments and Raffle

Guests welcome. Non members £7

Hatfield Peverel Flower Club
Programme for Spring/Summer 2024

7th February	Clare Thompson	<i>Off The Cuff</i>
6th March	Crystal Dyball	<i>Junk & Jumble</i>
3rd April	Patricia Ellis	<i>Tins & Things</i>
1st May	Helen Hare	<i>East of West</i>
5th June	Robin White	<i>Looking Back</i>
3rd July	Deb Hart	<i>Willow in the Landscape</i> A talk and demonstration

N.B. no meeting in August

The evening starts at 7.30pm with refreshments and the demonstration begins at 8.00pm

The Village Hall, Maldon Road, Hatfield Peverel, CM3 2HP

Visitors are very welcome at a cost of £7

How to report a Highways related fault



If you come across a problem relating to the highway or roads around Hatfield Peverel, here's how to get in touch with the right people to help:

**IF THERE'S AN IMMEDIATE RISK TO PUBLIC SAFETY,
CALL 0345 603 7631**

If it's something you need to report but is not an immediate risk and is on Essex County Council land, such as:

- Road, pavement and surface issues
- Lights
- Signals
- Road signs
- Streetlights
- Flooding
- Drainage
- Manhole covers
- Roadworks
- Highway obstructions
- Public rights of way
- Bridges
- Culverts
- Bus stops
- Bollards
- Trees, hedges and weeds



Use the Essex County Council on-line reporting tool at www.essexhighways.org/tell-us

The reporting tool is very easy to use and if you add your own e-mail details you will receive reports and updates on the fault you have reported. Up to five images can also be added.

For issues relating to bus shelters in the village and faults with any street lighting column with a number preceded by the letter "P", contact the Parish Council Office on 01245 382865 (parishclerk@hatfieldpeverelpc.com)

For issues relating to abandoned vehicles, fly tipping, street cleaning and road name plates, contact Braintree District Council on 01376 552525

For issues on the A12, and A120 between the M11 junction and Parkeston roundabout, contact National Highways on 0300 123 5000 (info@nationalhighways.co.uk)

And for issues relating to parking restriction violations and enforcement, contact North Essex Parking Partnership on 01206 282316

Hatfield Peverel St. Andrew's Junior School



After the RAAC related closure of our school building at the beginning of the Autumn Term 2023, we continue to meet the many challenges our temporary school buildings bring, back on the school site. We are really looking forward to the arrival of our temporary school hall which will allow us to congregate as a whole school again for collective worship, school productions, indoor PE and enable us to begin serving hot school meals again.

We work tirelessly to ensure the very best outcomes for our children (despite the adversities!) - they continue to impress us with our school CARE values being demonstrated at all times: -

Compassionate – **A**chievement – **R**espect - **E**njoyment

In the Autumn Term our School Council took delivery of 420 tree whips from the Woodland Trust after a successful application for Green Flag status. With the help of our fabulous volunteer, John Clemo, these were healed in so they could drink and recover from their journey. Our baby plants were planted at the bottom of the school field where they will eventually grow into a



beautiful barrier that will provide valuable wildlife habitat. Harry from the Essex Forest Initiative brought special tree dibbers which made making the holes in our hard stony soil a lot easier! 32 school councillors and deputy councillors were joined by a fantastic team of volunteers from the local community – parents and Hatfield Peverel Wildlife Volunteers headed by Wildlife Champion, Donna Goddard and councillor Diane Wallace. We were also privileged to be joined by a team from the Essex Forest Initiative who helped ensure we got the whips planted well.

In year 5, they have been working incredibly hard designing and sewing a Viking landscape. They used offcuts of fabric, different coloured cotton thread, sequins and buttons to create their finished textile piece. The children and staff were very grateful to have lots of parents and grandparents come in to help the children with this project. Here are some of the finished designs:



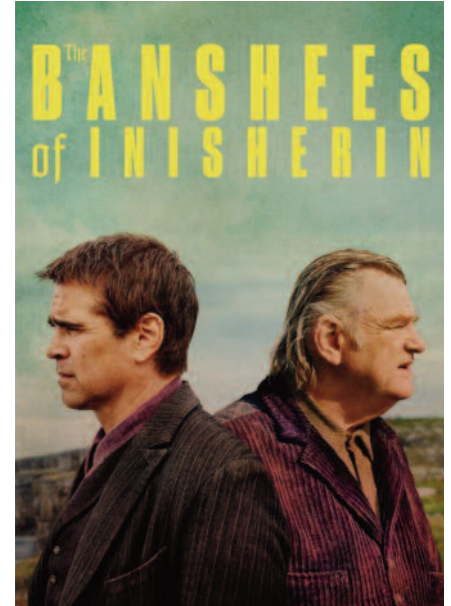
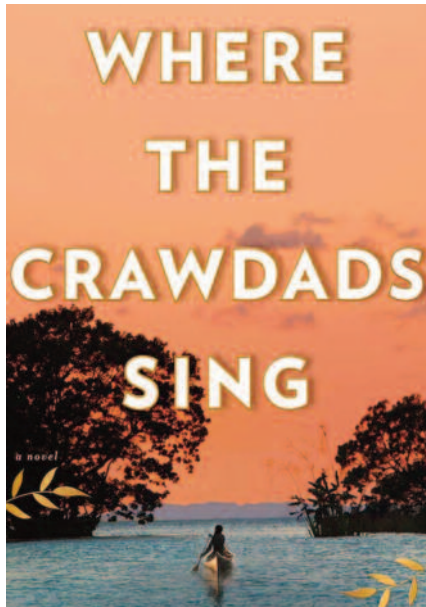
We look forward to warmer weather and the Spring months ahead enabling the use of our outdoor classroom

Becky Black – Headteacher

Maldon Film Club

– What Next?

Maldon Film Club welcomed in 2024 with the screening of three films in January: *Master Cheng*, *Close*, and *Where the Crawdads Sing*.



The season continues in February with two films the first of which is ***The Quiet Girl*** on Wednesday 14th February. *The Quiet Girl* is an Irish coming-of-age drama written and directed by Colm Bairéad, in his feature film debut. Set in 1981, the film follows a withdrawn nine-year-old girl raised by neglectful parents. The girl, Calt, experiences a loving home for the first time when she spends the summer on a farm in County Waterford, alone with a married couple who are distant relatives. Whilst she blossoms in their care, she also discovers one painful truth. *The Quiet Girl* won many awards and received critical acclaim for its emotional weight, story, and performances. It was elected as Ireland's submission for Best International Feature Film at the 95th Academy Awards and received BAFTA Award nominations for Best Film Not in the English Language and Best Adapted Screenplay.

Our second film for February, on Wednesday 28th, is ***The Banshees of Inisherin***, the recipient of nine Oscar nominations. Set on a remote island off the west coast of Ireland, *The Banshees of Inisherin* follows lifelong friends Padraic (Colin Farrell) and Colm (Brendan Gleeson), who find themselves at an impasse when Colm unexpectedly puts an end to their friendship. A stunned Padraic, aided by his sister Siobhan (Kerry Condon) and troubled young islander Dominic (Barry Keoghan), endeavours to repair the relationship, refusing to take no for an answer. But Padraic's repeated efforts only strengthen his former friend's resolve and when Colm delivers a desperate ultimatum, events swiftly escalate, with shocking consequences.

The season continues until May 22nd, 2024, with all films being shown on Wednesdays until then. There are six more films to be screened in March, April and May including the classic ***Cinema Paradiso*** and the highly acclaimed ***Women Talking***, ***After Love*** and ***Official Competition***.

From January the cost of membership is reduced to just £25 which entitles members to free admission to all the remaining films. In addition, there are a limited number of places for junior members aged 16-18 in full-time education and training and members' guests may attend for just £4 per person per film.

For further details and a membership form please check out the web site www.maldonfilmclub.uk, visit the Maldon Visitor Information Centre (1100 – 1600 Tuesday to Saturday from February 13th) or contact me, John Salisbury, on 07905 971608. So why not join now and enjoy the remaining eight films for free! I look forward to meeting you very soon.

Wildlife Champion Update

The bird, bat and bug boxes kindly made by Hatfield Peverel Cub Scouts have been installed in the cemetery and in Stone Path Meadow providing welcome shelter for our furry and feathered friends.

Our regular volunteering sessions have continued throughout the colder months, and I am very grateful to everyone who has helped with the following activities:

- On 12th December, 24 volunteers helped to plant hedging whips around the boundary of Meadow 3 at Stonepath Meadow. Special thanks to Tom and his team from the Essex Forest Initiative who supplied the trees and tools and managed the day beautifully
- On 13th December more volunteers and the Essex Forest Initiative staff helped the children at St Andrew's Junior school to plant hedging whips along the boundary of the school field with DeVere Close
- On 13th January we tidied the brambles in the corner of the Nounsley Play Area giving the hedging space to grow and thrive
- On 26th January we helped the children at Hatfield Peverel Infant School to plant hedging whips along the boundary of the school garden and the car park.



I'm sure that the new hedging will be very much appreciated by the wildlife and birds as well as the local community and school children in the coming years.

All are welcome to join us in working on wildlife-friendly projects around the village. We meet regularly from 9-11am on the second Saturday and the fourth Friday of each month. Forthcoming sessions will take place on Saturday 10th and Friday 23rd February. Please get in touch if you would like to join us!

The Parish Council's Environment Advisory Group continues to work on our Wilder Village Plan. This plan addresses the objectives set out in the Parish Council's Environmental Policy and includes actions suggested by residents and other interested parties who responded to our "Wilder Village Brainstorm" survey. The policy and survey results can be seen on

the Wilder Village webpage <https://www.hatfieldpeverelpc.com/wilder-village/>.

Donna Goddard, Urban Wildlife Champion, Hatfield Peverel
wildlife-champion@hatfieldpeverelpc.com
 01245 382550