

Hatfield Peverel

Review

265 - April 2018





Hatfield Peverel Review

Hatfield Peverel Parish Council publication. Opinions expressed are not necessarily those of the Council.

The editors are Jackie and Ken Earney. Contributions to 59 Willow Crescent, by email to keneaney@hotmail.com or by phoning 01245 381235.

Contents

Editorial/Surgery announcement	3
Allotments/Horticultural	4
Countryfile Stonepath Meadow	5
Parish Council	6
School governor vacancy/Nightingales	7
NDP/Village Hall events/Luncheon Club	8
Helen Rollason bike ride	9
Library news - Paintings/Craft and Chat/	10
Guiding group exhibition/	
Guiding	11
Local film clubs/Bowls/Hadfelda WI	12
Oliver Cromwell photo/HP in Bloom/	13
Speedwatch	
Methodist Church	14
St Andrews/MU	15
MU contd./WEA	16
Wine Club/Squares to blankets/	17
St Andrews quiz night	
Springtime in the Nursery	18
Useful telephone numbers/Parish Council	19
Alpacas/Flooding on Footpath 7	20

**Copy for the May/June issue by
Friday, 4 May please.**

Local events and happenings round and about

Diary Dates

Church diary dates from page 15

Village hall events page 8

April

- 16 Parish Council meeting
- 21 Helen Rollason coffee morning
- 25 Annual Parish meeting
- 25 Hadfelda WI AGM
- 26 Folk Dance Club
- 28 St Andrew's Quiz night
- 27/29 Boreham Art exhibition
- 29 200 years of Methodism, page 14

May

- 2 Flower Club
- 5 St Andrew's coffee morning
- 9 Wine Club
- 10 Folk Dance Club
- 12 Methodist Church coffee morning
- 13 Helen Rollason bike ride
- 14 Annual Parish Council meeting
- 19 Helen Rollason coffee morning
- 23 Hadfelda WI
- 24 Folk Dance Club

June

- 2 St Andrew's coffee morning
- 4 Parish Council meeting
- 6 Flower Club

Photographing sheep is not as easy as it looks. Firstly they are nervous, especially when they have young. Secondly they don't know you and are not keen when you sit down in the middle of their field. These three are looking askance at Ken, still some distance away - I hadn't got a seat and was forced to stand which frightened them more. But thank you John, your sheep are great!

7am Thursday 5 April

I believe - I hope - Spring has finally arrived. The sun, rising gently through the belt of still bare trees in our back garden, is visible in all its yellow glory. The sky is blue, there's a gentle breeze. The rooks and jackdaws, busy in rain and shine, are putting finishing touches to their twiggy houses high in the treetops - a total of eighteen homes this 2018 divided between those in De Vere Close (5) and Church Road (13). I question their choices of a gentle backwater or a busy through road, but there you are, it's their decision.

Is this the day we can shed our vests, get out in the garden, pull a few weeds, sow a handful of seed - check the under-water foot paths? No, the Review is pointing an accusing finger, how can you consider the joy of outdoors when you have work to do. (We should have two computers so me upstairs and him downstairs could work together, without the excuse that one or other of us is where one or other of us want to be!). But onwards and upwards as they say on Gardener's Question Time.

Hatfield Peverel had a taste of greatness in March when BBC2's popular programme Countryfile spent the day filming in Stonepath Meadow. From a day's hard work, only 6 minutes was on air but it puts our problems with unwanted development, as well as many, many others throughout the country, what we are up against when trying to save our unspoilt countryside. As others, we are not trying to stop building altogether, just to have it in the right place. Not greenfield sites when others are available. See page 5. Recognise a face - we may have stars in our midst.

June Review warning

A reminder to all contributors and readers. Editing the Review can be a bit of a tie at times so we'd like a bit of 'us time' now and again. As last year, the June Review is likely to be very late, probably towards the end of the month, and very slim. Please get any important contributions in early, in the first/second week in May to give us a chance to get a little bit ahead of the game.

DRS. SIDDIQUI, CUNNINGHAM & HALL

Salaried Doctors: Dr. Edmondson & Acors

Practice Manager: Beverley Jones

Sidney House & The Laurels, Strutt Close, Hatfield Peverel, Chelmsford CM3 2HB

Tel: 01245 380324 Fax: 01245 381488

Web www.sidneyhouseandthelaurels.co.uk

Email Sidney.laurels@nhs.net



Sidney House & The Laurels surgeries are now closed to new registrations and temporary residents with the exception of new babies and immediate family (subject to proof of residency) residing with Patients already registered at the Practice. This action has been taken due to reduced funding, our current list size and capacity.

The Practice is working with NHS England and the CCG and will announce if and when we are able to accept new registrations in the near future.


The Partners
12th March 2018

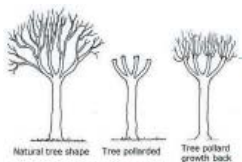
'Is the gardening season really upon us, or still yet to come?'

Hatfield Peverel Allotment Association (HPAA) Drew Price new site letting officer www.hpaa.org.uk

What with this winter's harsh conditions and cold temperatures, it is a job to know what and when to plant. At the HPAA we are asking those same questions and more. Chitted potatoes should be planted in the last two weeks of March to benefit from April showers - gardening experts told us to wait till after Easter because of a risk of snow and frost. Most are planting them now with assistance from a handful of chicken manure pellets in with each potato.

As you begin **your** growing season, use good judgment and have a plan based upon your history of success, crop rotation, and willingness to try new varieties and differing crops. Last year we had some success with sweet potatoes (Yams), they weren't brilliant and this year we will buy this veg. April is the month to get rid of weeds before they begin their annual takeover. At the allotments, we inspect plots and, at the end of May, have weed inspections. Local residents beware the weeds getting a hold. Regardless of what you grow, weeds are automatic.

A key chore this month is pruning your shrubs. Use the right tools, take out damaged, dead or rubbing stems. And when pruning, use this example to get the best results. The most common error is pollarding which is shown here. It can cause irreparable damage as well as being unsightly for the life of the tree.



Finally, lawn care. The best advice is to remove dead grass. Cut it a bit longer the first time to avoid shock and then use the mid-range on your mower for most of the season. Grass kept too short will need constant watering. Longer grass sends longer roots and is more drought resistant.

And for those garden enthusiasts who might wish for more room, come and see us re an allotment plot. Call me, Drew at 0780 361 5062, or Simon Reed at 07990 580985. Wishing you sunshine and the joy of your garden, Drew Price Email: chairman@hpaa.org.uk

'Spring shows what God can do with a drab and dirty world.' - Virgil A Kraft

'In the spring I have counted one hundred and thirty-six different kinds of weather inside of four and twenty hours.' - Mark Twain.

Winners all - hot off the press

This Saturday (7 April) the Horticultural Society held its annual Spring Show - and the sun shone a bit. Daffodils were in full flower - remember last year we thought they were all going to be over - and made a brilliant display.

Trophies and awards were presented by chairman John Upson. Winners were Diploma of Excellence in Horticulture Section A, Doe Memorial Cup (daffodils), Daffodils Class 7 and Tulip Cup, were awarded to Mike Jollands; Garden News Shield (other flowers) John Heathcote; Les Childs Memorial Bowl (best individual exhibit) Neville Bright; other flowers (£5 prize) Judith Witney; Society Cup (cookery)

and handicrafts £5 prize Anne Mountfort; British Legion Cup (handicrafts) and best exhibit in section D, Virginia Strange; Humming Bird trophy (best individual exhibit handicrafts) Mary Hills. Claydon Memorial Shield for children Grace Harman and Sophie Longbottom who also won the Society Cup for best individual exhibit in the children's section. The Lens Cup (photography) and £5 prize for best exhibit Les Brann. The simnel cake (£10 prize) was won by Viv Cooke and the daffodil competition, (£10 prize) by Jenny Clemo.

Sunday 17 June - afternoon garden walk to Peacocks, Margaretting. Meet at garden 2pm
Transport can be arranged if required. Ring Clive 01245 381704.



Six minutes of glory

When the popular BBC2 Countryfile programme hit our screens on Sunday 11 March many were surprised to see an item relating to our village of Hatfield Peverel - Stonepath Meadow, in the headlines again.

The Campaign for the Protection of Rural England (CPRE)'s struggle against the activities of 'no-win no-fee' land promoters in bringing about unplanned development in rural areas was featured in this episode of Countryfile, using Stonepath Meadow as an example of something happening all over the country.



A team from BBC Bristol spent the whole day filming on-site to secure those six minutes of air time. Tom Heap - TV and radio reporter and presenter, a regular contributor to BBC1's Countryfile and Radio 4's environmental programme 'Costing the Earth' - spoke to Kevin Dale about our particular situation. This was preceded by brief (*very brief!*) snatches of comment from Elise Gwyn-Williams and Ken Earney. Tom Fyans, CPRE's campaigns and policy director, explained the wider situation where, countrywide, local authorities are confronted by the activities of these land promoters.



If it helps our cause, along with many others throughout the country in similar situations, the hard work has all been worth while.

Photos: top, an aerial view of Stonepath Meadow from BBC drone shots featured in the programme. Middle, Elise Gwyn-Williams snatches a 'selfie' with Tom Heap and bottom, from left, Tricia Moxey, CPRE Essex, Neil and Margaret Freeman, Kevin Dale, Tom Heap and Andy Simmonds - both photos by Meloney Dale

Parish Council news

Sarah Gaeta, Clerk to the Parish Council, Parish Council Office,
Community Association Village Hall, Maldon Road,
Hatfield Peverel, CM3 2HP
Tel 01245 382865. Email: parishclerk@hatfieldpeverelpc.co.uk



Annual Parish meeting – all welcome!

The Annual Parish meeting will be held on the evening of Wednesday 25 April at the village hall. This meeting is for members of the public to find out about what the Parish Council has been doing over the last year and what their plans are for the next. The agenda will be displayed on Parish Council noticeboards and website in early April. We hope to see you there.

Planning

All planning meetings are open to the public. Notification of these meetings will be displayed in the village noticeboards three clear days prior to each meeting.

The following applications have recently been made

Erection of first floor side extension at 2 Birkdale Rise. Erection of open front porch at 12 Rookery Close. Erection of single storey rear extension with lean-to pitched roof replacing existing conservatory at 1 Laburnum Way. Erection of two storey side extension at 20 Gleneagles Way. Erection of single storey rear extension at The Haven, Nounsley Road. Application for a non-material amendment following grant of planning permission at 4 New Road. Change of use from A1 to B1 (business) ground floor only at Honeypot Convenience Store, The Street. Removal of existing roof and new roof installed with changes to external façade at Brooklyn, Ulting Road.

The following applications have recently been granted

Proposed rear extension and conversion of loft with mansard roof and dormers to rear and side at 32 Priory Farm Road. Erection of single storey front and rear extensions and internal alterations at Longfields, Maldon Road. Tree works – reduce height of oak tree by 3 metres then reshape and clean up trunk at 21 Woodfield Way. Tree works – as specified in tree schedule and plan at 1 The Pines (part granted/part refused).

Tree Preservation Orders

Tree works – reduce growth on row of conifers to the existing cut point and remove one tree that is leaning on boundary fence at 41 Willow Crescent. Fell cypress to ground level, remove stump completely and reinstate at The Brambles, Wickham Bishops Road. Reduce hornbeam and horse chestnut by half at Gables, Church Road. Tree works to lime and horse chestnut at 111 Church Road.

The following application has recently been refused

Erection of a concrete motorbike garage, rendered and painted to match house finish and colour at Scheherazade, Nounsley Road.

Website

Don't forget you can view all Parish Council news on its website <http://www.essex.info.net/hatfieldpeverel/>

The next meeting of the Parish Council will be held on Monday 16 April, with the **Annual Parish meeting on Wednesday 25 April in the village hall**. The annual Parish Council meeting is on Monday 14 May in the small room at the village hall. The 4 June and 2 July meetings are also in the village hall.

Correction: apologies for the error in John Cockell's item about Transport Representative meetings on page 22 of the February edition: the correct email address is johnandann12@btinternet.com



Last term Year 2 Infants learnt about owls: we didn't have room in the February issue for this lovely painting by Chloe. If you want to see all five of our native owls pay a visit to Stow Maries Great War aerodrome, Maldon, it's only 20 minutes drive away. You may not see all the owls but it is worth a visit to see the aerodrome and exhibits. Opening times are Friday to Sunday 10am - 4pm. For more information ring 01245 329358

School Governor vacancy

Hatfield Peverel Infant School

Being a School Governor is a rewarding and effective way to help the lives of young people and to make a voluntary contribution to your community. Co-opted Governors are appointed by the Governing Body. The Governing Body of Hatfield Peverel Infant School is looking to appoint new governors who either live or work in our community and who have a keen interest in the success of the school.

Do you have:

- * An interest in the future of our children?
- * Some spare time, energy and enthusiasm?
- * A desire to make a difference?
- * Readiness to accept responsibility?
- * An ability to work as a team?
- * Are you happy to ask questions, listen and learn?

If you fit the bill, then please consider joining one of the largest volunteer groups in the country, working with others to get the best for our children.

If you are interested in becoming a Co-opted Governor and would like any further information or to discuss the position in more detail then please contact our Chair of Governors, Louise Poulton, by email chair@hatfieldpeverel.essex.sch.uk

First nightingales at Fingringhoe

The first nightingales of 2018 have arrived at Essex Wildlife Trust's reserve at Fingringhoe Wick. **Guided walks are available Sunday 22 April until Friday 11 May daily, 7.30pm - 9pm, £6 per person. Booking essential - 01206 729678.**

It is hoped between 30 to 40 singing males will fill the air with their magical song.

Neighbourhood Development Plan

The NDP Executive Group held a meeting on 20 February, and the Motion to instruct Place Services at Essex County Council to prepare a Strategic Environmental Assessment (SEA) was carried. Fortunately, Place Services had the scope to carry out this work immediately.

Accordingly Braintree District Council submitted to the Examiner on the 20 March the SEA Scoping and Environmental Report March 2018 together with the SEA Screening Report February 2018, Habitat Regulation Assessment Screening Report 2017, and accompanying correspondence.

The Examiner has requested confirmation on amendments to three Policies, FI1 (Facilities and Infrastructure), HO1 (Design of New Developments) and HO6 (Allocation of the former Arla site) and also further public consultation.

The NDP team is liaising directly with the Examiner, and also BDC on the policy amendments, and further consultation which is expected to take place mid April.

Village hall happenings

Facebook: Hatfield Peverel village hall

Yearly membership £5

Opening times

Monday to Saturday 7 - 11pm

Sunday 12 noon - 4.30pm

Specials dates

Saturday 28 April

Disco, village hall

Sunday 29 April

Treasurer hunt -

please see Parish Council website for details

Saturday 7 July

Party in the Park

Regular happenings

Bingo (8pm first Wednesday, third Thursday)

18 April, 2, 16 May, 6, 20 June

Brag (first Friday in month) 4 May, 1 June

Poker (third Saturday in month) 19 May, 16 June

Pool (second Friday in month) 12 May, 9 June

Darts Monday, and Tuesday new players needed

Booking for hall/meeting rooms

HPCA booking@gmail.com

Village Hall 01245 381481

Please leave a voice mail and Allan or a staff member will call you asap. This is the booking number only for clubs and parties.

St Andrews Lunch Club and Home Visitors

If you have lost a loved one or live on your own and are finding life a bit empty you might like to consider one of the following.

- A friendly chat with one of our home visitors - at your convenience.

- Join us for the Lunch Club held on the second Tuesday of the month in the Church hall. The two-course meal costs £4

- Enjoy soup and sandwiches and a chat on the fourth Tuesday of the month. Cost is £2.50.

Transport can be arranged for the luncheon club and soup and sandwiches.

For more information on any of the above please contact Belinda Hull on 01376 512540, mobile 07854 122728.

Boreham Art Circle

42nd Exhibition and Sale

Boreham Village Hall

Main Road, Boreham

www.essexinfo.net/boreham-art-circle

www.facebook.com/borehamartcircle

Telephone 01245 223106

Friday 27 - Sunday 29 April

This is a highly regarded open exhibition with pictures and folios showing a variety of subjects and mediums for sale at a cost to suit all pockets. Refreshments available. See website above for opening times

On yer bike!

Ride for Helen Pedal Power to support Helen Rollason Cancer Charity

Ride for Helen is back on Sunday 13 May for its fifth year and promises to be one of the region's biggest and best cycling events in 2018 for Helen Rollason Cancer Charity (HRCC). Cyclists from across the county will meet at The Crix in Hatfield Peverel, Essex, to take part in this fantastic, family-friendly event which offers a choice of cycling routes to suit all capabilities - 6 miles, 15 miles, 35 miles, 65 miles and a new 100 miles. *On the right are some of last year's young participants.*



All ages and abilities are welcome to join in as individuals or as a team, **and families can enjoy two free child places for every paying adult on the 6 mile route.** Included in the registration price is a fund-raising pack, route maps, route signage, first aid support, mobile mechanic support and recovery, refreshment stops and a medal for finishers. Entrants have the option to purchase a Ride for Helen t-shirt on registration or a special cycling jersey which has been designed for the charity by Scimitar (available to purchase from www.stores4sports.com).

Nadije Butler from Ilford (*on right*) has volunteered to act as sweeper for the 65 mile route; 'My role involves cycling at the end of the 65 mile riding group to ensure all riders are safe and keeping together. This will be my third year in a row taking part as a volunteer. As a breast cancer survivor myself, I know first-hand how important complimentary therapies and support are for cancer patients and their nearest and dearest. I am delighted to support Helen Rollason Cancer Charity – they do amazing work.'



HRCC Fund-raising Manager Kate Alden said: 'We are looking forward to this year's Ride for Helen on Sunday 13 May as it's an exciting and popular event which attracts a variety of participants. We have worked hard to map out the best routes through the beautiful Essex countryside to ensure that all of our riders have a fantastic experience.'

In 2017, Ride for Helen raised an incredible £41,442 for Helen Rollason Cancer Charity, with over 1,400 people taking part. It was fantastic to see families, groups of friends, and experienced cyclists enjoying the ride. We also feel very lucky that our patron Ian Twinley, has kindly allowed us to use the beautiful grounds of The Crix as a starting and finishing point every year. We couldn't organise such an amazing and successful event without the help of our dedicated team of volunteers, staff, sponsors and supporters."

For information or to register, please visit www.rideforhelen.co.uk or call 01245 380719. You can also find out more about the great work that Helen Rollason Cancer Charity does at www.helenrollason.org.uk

If cycling isn't your thing but you'd like to get involved, why not volunteer on the day? We have lots of fun and exciting roles for you to get stuck into – call us on 01245 380719 for more information. For more information please contact Holly Butler in Marketing, Helen Rollason Cancer Charity on 01245 380719 or email holly.butler@helenrollason.org.uk

What's going on in our Library?

Exhibition of paintings by Hatfield Peverel Art Group

An exhibition of paintings by the Hatfield Peverel Art Group is taking place at our library, during opening times, from Friday 18 May until Friday 15 June 2018.

There will also be a workshop for children (or anyone else who is interested) on quill making and how to write and draw with them, on Thursday 31 May from 2pm until 4pm. Write like Shakespeare even if you haven't his inspiration!

The Art Group meets regularly in the church hall every Monday from 2 - 4pm. There is a mixed range of ability and interests, with a professional tutor offering advice and encouragement on alternate weeks. If you are interested in joining our social and friendly group please contact Brian Corrie on 01245 381471.

Craft and chat get-together a success

Cathy Etheridge 381553

Great news - Craft and chat is now meeting in the library every Thursday afternoon at 1.30pm. We have got off to a successful start but it would be lovely to be able to welcome even more members.

We have our own special library ticket so that members can borrow craft books for up to three months. The staff is also ordering in a supply of craft books for us, and I am sure if there is a certain book you would like for your project they would happily get it in for you. Do come along, we are a crafty, chatty and friendly group.

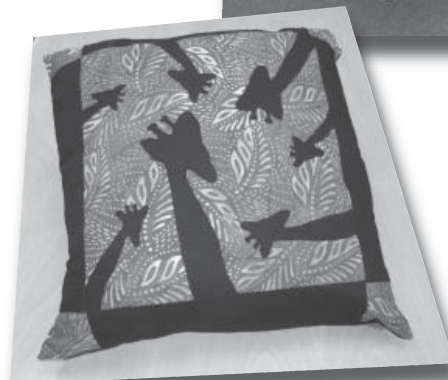
For information ring Cathy on number above or drop into the library on a Thursday afternoon.

Fancy a game of chess?

Do you enjoy chess? Would you like to join a group - or start up a group yourself? Call in to the library and have a chat. Opening times are on page 19 of this Review

Talented Rainbows, Brownies and Guides exhibition in the library

There is a display of some of our local Hatfield Peverel girlguiding groups' wonderful exhibits in the Witham Division Handicraft 'Out of Africa' competition. Do go and see them.



African life and Mexican cookery

Hatfield Peverel Girlguiding Group - Julie Downes

Some of the entries for the Witham handicraft exhibition can be seen in the library (see photos on left hand page)

Rainbows celebrated Thinking Day and thought about how Girlguiding has an impact on ours and other peoples lives.

We have been working hard on producing lovely craft for the Division Handicraft competition, decorating large pebbles with African animals, making binoculars and creating African rain sticks. Our Unit entry of a 3D elephant which Ruby Fairy nicknamed 'Ellie' is on the right. She is wearing a hand-embroidered cloth made by the Rainbows.

We held our Special Ladies evening for the third year running and Mums, Nans and Aunties came to join in with the Rainbows in making their rain sticks and putting finishing touches to Ellie! For Mother's Day, we made and decorated post it note holders and designed our own cards.

Brownies have been working on their entries for the handicraft competition and have made some wonderful African-themed masks and necklaces. Some have also designed and printed animal-themed wallpaper. For our unit entry we made a model African hut.

The snow put paid to our Welsh evening to celebrate St David's day but the tissue paper daffodils made lovely Mother's Day presents.

Guides

This term has been a busy one getting ready for the Witham Division Handicraft Completion and Guides have been making a variety of handicrafts individually linked to an African theme. They have made iPhone cases, Batik fabric, woven baskets and Moroccan good luck hands. As a whole unit we have been working on making a 3D Egyptian Sarcophagus to enter into the competition.

Throughout the whole group their hard work has been rewarded. Although they missed out on first place their crafts were outstanding.



Our Guides really enjoyed celebrating World Thinking Day. This year they decided to have a Mexican-themed evening. They cooked a variety of Mexican foods to taste (*photo lower left*) and they also found out facts about the country. For Mothers' Day they made heart shaped ornaments out of plaster of Paris which they decorated with a variety of materials.

At the beginning of the term we had a visit from Canine Partners who gave us the opportunity to meet one of their dogs in training. They gave an informative talk on how the dogs are trained to meet the needs of the people they will be caring for.

This year we celebrated Shrove Tuesday with the guides making their own pancakes during our unit meeting which were very delicious.

Now the days are getting longer we are looking forward to the lighter evenings where we can go outside with our Guides during our unit meetings.



Events round and about

Chelmsford Film Club

Cramphorn Theatre, Fairfield Road, Chelmsford

Screening at 8pm

www.chelmsford-filmclub.co.uk/Tel 01245 224064

Tuesday 8 May Hunt for the Wilderpeople

Wednesday 23 May El Sur

Tuesday 19 June The Salesman

Maldon Film Club

Maldon Town Hall. Screening at 8pm

www.maldonfilmclub.info/Tel 01621 869340

Wednesday 25 April Love and Friendship
(AGM, social evening)

Wednesday 9 May Victoria

Wednesday 23 May Toni Erdmann

Wickham Bishops Village Hall

'Reel Picture House'

Screening at 8pm, doors open 7pm

Box Office: The Health Food Shop, 12 The Street

Wickham Bishops CM8 3NN

Telephone 01621 890004

Friday 20 April Battle of the Sexes

Friday 18 May Goodbye Christopher Robin

Outside green opens on 24 April

Rita Thomson, Bowls Captain, 01245 380038

Our line dance and social in March was a great success - we shall be holding another in September/October, look out for posters.

The Chrissie Harris trophy was held for first-timers on 19 March and Margaret Hinsley was the winner. Tuesday Triples League was won by Dennis Partridge and John Wells. Traditionally on Good Friday the men play the ladies - the ladies were beaten but received an Easter egg, great fun.

Eight teams from other clubs played for the John Franklin trophy which was won by Canvey Island. The presentation dinner is on 5 May.

Open day Sunday 13 May 10am - 4pm

Inside and outside. Do come and have a look round the club and have a try, this game could be for you!

We are looking forward to some decent weather, there's nothing like bowls on a good day.

A Taste of Music Hall - our first meeting of 2018

Hadfelda WI - Marel Elliston



Arthur Brooks gave an amusing talk at our January meeting, reminding us that music hall was the only form of entertainment for many people at the time and that some of the artists became very famous, performing at different venues in one evening. Arthur played some of the old songs and it was rather concerning that most of us had heard of them!

Dot took us on a trip down memory lane by reading the minutes from a meeting of Hadfelda WI held on 24 January 1968.

Unfortunately our February meeting had to be cancelled due to the bad weather and several inches of snow. The speaker, very wisely, decided not to brave the road from Burnham on Crouch to Hatfield Peverel!

Members enjoyed a delicious lunch at The Wheatsheaf on 13 March, just fitting it in before the owners, Len and Sandy, retire to sunny Portugal. Our March meeting was an open evening and we were delighted to welcome four visitors, including two gentlemen. The excellent speaker, Andy Bennet, entertained us with 'The View from Space'. His interesting and informative talk about the stars, planets and other galaxies was illustrated with some amazing photos. Contrary to popular belief, the Great Wall of China can't be seen from space!

The County Annual Meeting was held at the Cliffs Pavilion, Westcliff earlier in the month. Our delegate, Gill, gave a short talk about the day, how good the speakers were, and how much the members attending had enjoyed the occasion.

Our next meeting on Wednesday 25 April is the AGM. Tea/coffee and cakes will be served and some entertainment is planned. We meet the 4th Wednesday of every month at 7.45pm in St. Andrew's Church Hall.



Oliver Cromwell en-route to Norwich

At the end of February, whilst the BBC and Stonepath Meadow campaigners were heavily occupied with making the item in BBC 1's Countryfile on the 11 March they missed this splendid sight not much more than half a mile away - sorry metricised folk, this one has to be in imperial units - as 70013 Oliver Cromwell hauled 'The Cathedrals Express' a special excursion train from Liverpool Street to Norwich. It is seen here yards before crossing over Terling Hall Road. Many thanks to Alan Evans for the photo.

Hatfield Peverel in Bloom



Spring is coming, and the annual photographic competition, open to everyone, will be held in the village hall at **Party in the Park on**

Saturday 7 July. Have your cameras ready and capture flowers, gardens, allotments and horticulture, then print them off on A4 paper. Bring them along nice and early so you get lots of chances to collect votes! Like previous years the judges will be **you**, the voting public. For information please email Kevin Dale dalekevin@hotmail.com



Village 'Speedwatch' Group

Owing to change of circumstances for several members, the group is currently not able to undertake regular monitoring and reporting of excess speed in the village.

We are therefore looking for new volunteers to help with this activity, which is supported by Essex Police and for which full training is provided.

If you are interested in joining the group, and helping to deal with one of the major traffic issues in the village, please contact the Parish Clerk on 01245 382865 or parishclerk@hatfieldpeverelpc.co.uk

200 years celebration of Methodism in Hatfield Peverel, 29 April

Recently we went to see the latest musical production by our sister Church in Maldon and enjoyed their version of 'The Rock', the story of Simon Peter from his first meetings with Jesus, leaving his fisherman work to become a disciple, and being a witness to the crucifixion where he denied being a follower of Jesus three times as foretold. Interlinked with this story was the baptism of Cornelius, a Roman Centurion and a non Jew, by the first disciples showing that Christianity was reaching out to all people irrespective of nationality or faith. The cast and choir - age range of 9 to 80+ - were on top form and gave a lively performance, much enjoyed by the audience.

Once again the 'Celebrate Jesus' group commenced their 2018 series of services at our Church and led a service of up-tempo praise using guitars, drums and modern music, joyous singing and happy worship and prayer. Sheila Jacobs spoke on the real Jesus and encouraged us to read the great discourse in John's Gospel. The worship included a time of ministry where individuals can be prayed for and blessings given.



On the 29 April at 3pm our church will be celebrating the beginning of Methodism in this village. In 1818 Mr George Shelley started preaching from 'The cage' in Station Road and on The Green and in various houses of friends. He was aided by his brother John and Dicky Belsham who travelled to preaching appointments on either his horse, Dandy, or driving a 2 donkey tandem. The first chapel was erected beside a pig yard in 1826, opposite the current church on the site of the present Urban Cottages. The ground had been given by Mr Shelley and the first church was built and fitted out for £214.9s 8d. The chapel was lit by candles and music was provided by a flute, clarinet and concertina. The clarinet is still stored in the Chelmsford Methodist archive. The first church became too small for its members so the site for the current one was purchased in 1874 for £60 from Edward Cook of Crix and the building was completed and opened in 1875 at a cost of £865.

We look forward to celebrating this achievement of 200 years, particularly as we will have the privilege of our President of the Bedfordshire, Essex and Hertfordshire District taking our service on that day. Rev David Chapman is very supportive of our Churches in the Chelmsford Circuit and a very inspirational speaker. Do come and join us on this special day and stay for refreshments following the service.

Hatfield Methodism going forward

Whilst we remember and admire the history of our former members as they built up our church in the village, it highlights that our current membership and activity is not comparable with their efforts and that we must start to do some things differently to keep a Methodist presence here. We have now had a preliminary meeting with our current Minister, Rev Barry Allen, to start to think about what changes would help this serve this purpose. Watch this space!

Regular events

Sunday	11am	Morning Service - everyone welcome
Every Thursday	10am - 12 noon	Open Door - come and join us for tea/coffee and friendly chat
2nd Saturday	10am - 12 noon	Coffee morning and cake stall
3rd Monday	7.30 - 9.30pm	Bible study group

News from St Andrews

John Strange Churchwarden

Post Easter is often a quiet time. A time for reflection, not only on the Easter story, but what it tells us as Christians, about our own lives and how we relate to our neighbours however near or distant they may be. If you took part in our Palm Sunday or Easter Services I hope you were able to take away the good news that Jesus Christ is Risen indeed, Halleluiah.



Those of you who visit our church or stroll through the churchyard will have noticed recently erected scaffolding. With a building that started life in the 12th century there is always maintenance to be carried out. The current project involves window preservation - replacement of an iron lintel that had rusted and split the stonework with one that is non corrosive - to installing a French Drain to minimise the damp rising in the north and west walls as well as internal repairs, will cost in the order of £17,000.

You may recall some years ago we had a visit from the lead carriers who removed some 30% of the lead from the south aisle roof. As a result our insurers recommended that to maintain full insurance cover, especially whilst scaffolding is in place, we needed to fit alarms, just under £6,000. You who use our hall, will know we have an interesting layout of toilet facilities, especially for those with special needs. Designs have been approved that will be more convenient for all, also our kitchen will be slightly larger. We are awaiting clarification on the quotations for this project.

This is over and above the general day to day running cost for services, heating etc and our Parish Share, the sum we pay to the Diocese to cover our Vicars stipend and housing and training new Clergy. For 2018 that figure is in excess of £51,000, the budget for this year is £86,000. This sum is raised by regular givers and fund raising events - **our coffee mornings, you are always most welcome on the first Saturday of each month. And have you seen our revamped Parish magazine? If you would like to subscribe it's £5 for the year**, ten issues covering twelve months. Give us your name/address by phoning the Vicar 380598 or Virginia Strange 381004. More subscribers will help us cover the production cost.

I must not forget our sister church in Ulting, some of you I know worship there. Two major projects are planned for All Saints, these are the work detailed in the quinquennial report, plus re-wiring of the building and installation of a new heating system. The planning stage is almost complete but Faculty applications have yet to be made before work may commence. **A special service to be attended by our Bishop will take place at All Saints at 9am on the 29 April.**

We shall be holding our Annual Parochial Church meeting in the Church Hall on the 15 April at 11.30am, all are welcome.

Mothers Union

Jean Ashby

Our speaker at the beginning of March, Mrs Pauline Briggs, gave us a fascinating insight into her journey through her life entitled 'I am here, where are you?'



Born at Beeston, near Nottingham, where her parents were members of the local Baptist Church,

when quite young, her parents bought a piano and told her she would learn to play it. She did as she was told and had lessons from the Church organist. When he moved to London he told her she could take over his post at the Church. Again she did what was expected of her.

Many years later she met and married her husband and his work took them to different places

including Alresford, near Colchester. As there was no Baptist Church she became a member of the Anglican Church, St. Andrews, and played for them when needed. She joined the MU not knowing what it was all about, and when the enrolling member's husband was taken ill she was asked to take over to enable the lady to look after him. Pauline felt ill-prepared but did as she was asked.

She attended a literacy meeting to find out how African mothers were taught to read. With pictures and words they were taught about safe drinking water and everyday things in the home and with numbers they learned the value of money. Pauline learned that the MU is not just a local organisation but a huge global one with a voice at the United Nations conference in the USA.

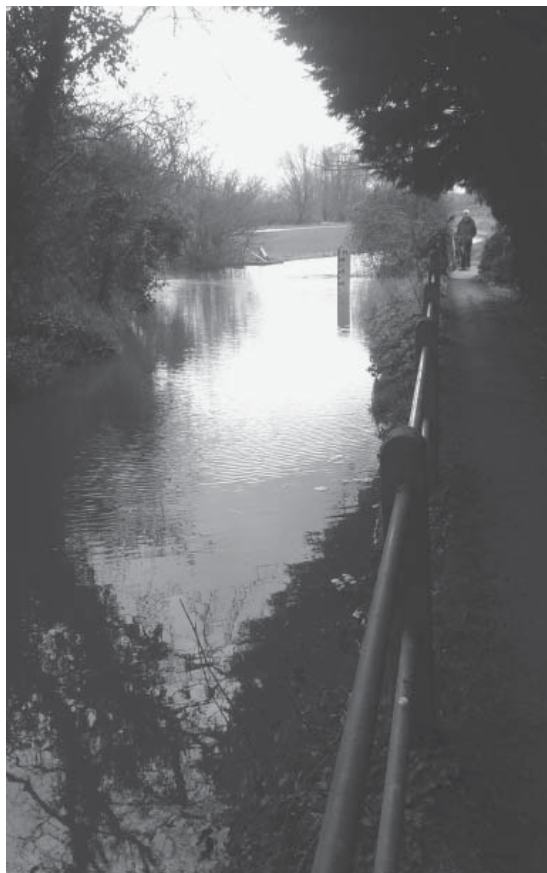
There are many different positions within the MU organisation requiring work and dedication, and in her time Pauline has held many of them: Deanery Treasurer, Deanery Leader, Vice President of the Colchester area, and marketing and publishing for the MU. These from a humble organist who played when needed! She never sought these positions, they found her! She believes God led her and chose her and that the biggest problem inside and outside the organisation is loneliness. so she begged us to celebrate our membership.

We thanked her for an interesting talk and prayed for Mothers Union worldwide, for caring and mothering, and for fair-trade for all farmers, especially in Africa.

Our £100 collection for 'Make a Mother's Day' was sent to Mary Sumner House to be used in the section 'Create a powerful voice'. *We have since received a letter from Marty Sumner house thanking us for our donation.*

On Tuesday 27 March Fr Stephen welcomed everyone to Holy Communion and Passiontide reflections. There was no meeting in April as it coincided with the Easter holiday

On Tuesday 1 May our speaker will be Rev Keith Lovell. His talk is entitled 'Underground Railways'. Everyone is welcome.



Water, water everywhere - a result of the rain several weeks ago. Andy Simmond took this photo of flood conditions at Nounsley Ford in April

Food, glorious food...

With the business of the AGM over members enjoyed a taste of 'History through Essex Foods' the talk given by Keith Lovell, former vicar at Tollesbury.

WEA

He spoke of Tiptree jams, Kelvedon Wonder peas, Dunmow Flitch bacon, Leigh cockles, and Saffron - a costly spice renowned for its delicate flavour and colour. The railway in the 19th and 20th centuries was very important in exporting Essex food around the country. Indeed, it helped to keep some of our branch lines open.

The September class will be Chris Green and 'Musical Postcards' at home and abroad.

Street wines and Sicilian sizzlers!

Peverel Wine Club – Vee Green, Secretary (01245 355723)

www.peverelwineclub.co.uk

Email peverelwineclub@hotmail.co.uk



Spring is now with us - a snowy winter did not stop our members attending several very happy meetings! February's fell conveniently on Valentine's Day, giving us an excellent theme – a tasting of wine and chocolate **together!** For many years combining wine with chocolate was considered a gastronomic disaster, but recent thinking has identified a number of wines which blend beautifully with chocolate, the catch being that not every wine goes with every chocolate!

We tasted several pairs of wines with some rather special chocolates, and reached the conclusion that very dry wines (red or white) are not a good match, but richer fruitier wines of both colours are a better bet. We also started the evening with the Peverel version of Speed Dating, and concluded with the now-traditional game of Mr and Mrs, hotly contested by 4 couples. In between, we sampled cheese hearts kindly provided by Anne Mountfort, Ann Richards and Emma Cook, plus cheese and biscuits including some heart-shaped cheeses and – for those with a sweet tooth – some mini-lovehearts.

March proved a jolly if chaotic evening, entitled Wine Detectives. Attendees were divided into 3 teams (Morses, Poirots and Sherlocks) who were given a blind tasting of 6 wines and had to agree within the team such questions as whether the wine was Old or New World, young or old or even what grape variety. Bonus points were awarded to blindfolded volunteers from each team who successfully identified the dearer bottle of wine and the colour of the wine (by touch alone), also the most experience-enhancing music to sip wine by – when all 3 volunteers identified the same piece of music, this was thought to prove the theory of music for wine, until it was realized they were accidentally tasting a white wine instead of a red!

We are looking forward to Wednesday 11 April, when Nils Dubro comes again to the Club to introduce a selection of wines from his independent wine merchant's in Colchester (www.streetwines.co.uk). When Nils visited a couple of years ago, he brought with him an excellent selection of very reasonably-priced wines not available in supermarkets, and we expect another interesting evening from him this time. This will be followed on May 9 by Nick and Jill Shakespear's round-up of Sicilian wines, the result of their recent visit there, and accompanied by slides of their travels through this wonderfully-varied wine island.

If you'd like to join us for a light-hearted evening, you would be very welcome, but please give Vee a ring beforehand to confirm attendance (and to ensure we have enough to eat and drink!) on 01245 355723. The Club meets normally on the second Wednesday of the month at 8pm in the village hall, but with some exceptions, so that it is always worth phoning first, especially during the summer months. The Wine Club has its own website, courtesy of the skills of Fred Brown, accessed either via the Hatfield Peverel community site at www.essexinfo.net/hatfieldpeverel/clubs-and-societies/ or direct via www.peverelwineclub.co.uk/ Find out more about the Wine Club, its activities and 40-year history before you come along.

Warm blankets to keep out the cold

During March a group of seventeen ladies, mainly from the village, met in the library to turn pre-knitted squares into blankets for the homeless in Chelmsford. There will be ten blankets in all. The excellent refreshments kept them going in between times!

Quiz night in aid of Homestart

St Andrew's Church Hall

Saturday 28 April, 6.30pm for 7pm start
£7 per person

**Information from Anna and John Tomlins
01245 380359**

Springtime in the Nursery

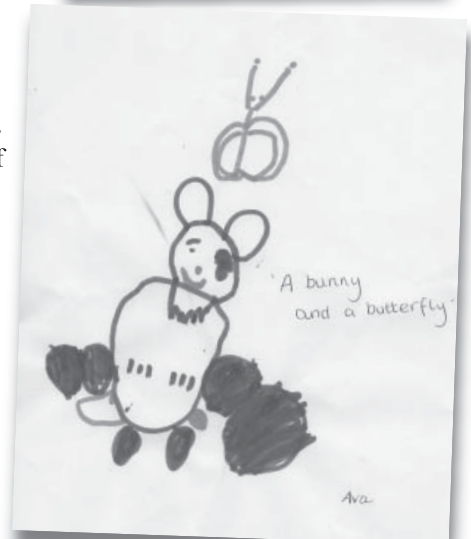
Spring has sprung in the nursery as we have explored different forms of creative expression to make Spring and Easter wall displays. The children experienced a wide range of activities during this term including exploring Chinese culture to celebrate Chinese New Year, as well as celebrating our festivals of St David's Day and Easter. Our Mummies came into play to celebrate Mother's Day, which we all enjoyed.

Next term is going to be busy working with the 'big' school to aid the children's smooth transition. We

will be visiting their new classroom to familiarise them with their new environment and encouraging them to become independent in preparation for the next exciting step in their learning journey. We also look forward to welcoming our eggs which hatch into ducklings and their first swimming lessons. We hope everyone enjoyed a Happy Easter.

The nursery is managed by Belinda Wakelin who has a BA Degree in Early Years and holds Early Years Professional Status with a well qualified staff team. For availability of spaces please telephone 01245 382450.

Thank you Nursery children for your Spring and Easter drawings, we love seeing them in The Review



Useful telephone numbers Dec 17

Please contact the editors for additions/errors.

Age UK Essex	01245 346106
Anglian Water , 24 hours	0800 919 155
Braintree District Council	01376 552525

Clean Team ring number above and ask for
Customer Services
Witham Area Office in Witham Library
- for walk-in enquiries only

Churches

St Andrew's (C of E), vicar	01245 380958
Methodist Church, minister	01621 853423
Catholic Church, Witham, priest	01376 512219

Citizens Advice Bureau Witham	0344 4994719
Drop-in sessions Mon/Tue/Thur/Fri 10am - 1pm	
Appointments only Thurs afternoon 1 - 4pm	

Doctors, health services

Hatfield Peverel doctors' surgery	01245 380324
NHS - non-emergency helpline	111
Pharmacy, Hadfelda Square	01245 380130

Electricity - emergency	0800 7838838
--------------------------------	--------------

Essex County Council	01245 492211
-----------------------------	--------------

Essex & Suffolk Water 24 hours	0845 7820999
---	--------------

First In Essex Buses Ltd	01245 293400
---------------------------------	--------------

Gas - emergency	0800 111999
------------------------	-------------

Harlequin Children's Centre	01376 535270
------------------------------------	--------------

Free support and services for children under 5

Hospitals

Broomfield (A&E); St Johns,	01245 362000
St Peters, Maldon	

Libraries (enquiry line)	0345 6037628
---------------------------------	--------------

Hatfield Peverel
Tuesday, Thursday 1 - 5pm
Wednesday, Saturday 9am - 1pm
Witham - use enquiry line above

Police Non-emergency calls	101
-----------------------------------	-----

Use 101 also for the local officer

Emergency calls	999
-----------------	-----

Witham Police Station opening hours

Monday - Saturday, 12 noon to 6pm

Post Office	01245 382787
--------------------	--------------

Railway Information

Greater Anglia	03456 007245
National Rail Enquiries (24 hrs)	03457 484950

Registrar of Births, Marriages & Deaths

Witham, by appointment only	03456 037632
Braintree, by appointment only	03456 037632

The Change Project	01245 258680
	08453 727701

Samaritans (24 hours - toll free)	08457 909090
--	--------------

Schools

St Andrew's Junior School	01245 380131
Hatfield Peverel Infant School	01245 380220
Hatfield Peverel Day Nursery	01245 382450
Tiger Tots Toddler Group	07886 021048
Charlotte Greaves	07527 763038

Social Services	0345 6037630
------------------------	--------------

Community Agent for Hatfield Peverel

Jan Hawkins	07540 720605
-------------	--------------

Village hall (after 7pm)	01245 381481
---------------------------------	--------------

Let us know of useful services to add to this list

Hatfield Peverel Parish Council

Committees and working parties

Burial Ground Working Party (B)
Country Park Focus Group (CP)
Employment (EMP), External Audit Review (A)
Finance and Budget (FB), Football Pavilion (F)
General purposes (GP)
Keith Bigden Memorial Ground User Group (KB)
Neighbourhood Development Plan (NDP)
Party in the Park (PiP), Planning (P), Traffic (T)
Village Environment (E)

Councillors (and their working parties)

Sarah Gaeta, Parish Clerk	01245 382865
parishclerk@hatfieldpeverelpc.co.uk	

Mark Weale Chair (CE/FG/P)	01245 381726
-----------------------------------	--------------

David Broddle (CP/E/FG/KB/P)	01245 382829
-------------------------------------	--------------

Marel Elliston	01245 380827
-----------------------	--------------

Suzanne Evans Vice Chair (EMP)	01245 382397
---------------------------------------	--------------

Kevin Gallifant	01245 381850
------------------------	--------------

Elaine Gill

Simon Hinkley	01245 381847
----------------------	--------------

Ted Munt (E/EMP/FG/NDP)	01245 381135
--------------------------------	--------------

Mike Renow	01245 380071
-------------------	--------------

Linda Shaw (CP/P)	01245 382669
--------------------------	--------------

Diane Wallace (CE/CP/NDP/P)	01245 381485
------------------------------------	--------------

District Councillors

David Bebb	01245 381065
-------------------	--------------

County Councillor

Derrick Louis	07918 721526
----------------------	--------------



Like our front cover sheep, we have alpacas living in the village too! Alpacas are a native South American species and bred for the quality of their fleece for over 5000 years. Once a rarity here, they have become a common sight, living outside all year on a diet of grass, hay and a hard food supplement. Their fleece produces a supersoft, superfine and hypoallergenic yarn to knit and weave quality garments. Their cuddly demeanour and friendly nature can sometime catch you out!

The flooding problem on Footpath 7 (FP7)

Ken Earney, Parish Paths Partnership, 01245 381235, kenearney@hotmail.com

The footpath running down beside the allotment field fence from the Scout and Guide HQ car park has been suffering from flooding on and off for around five years. Essex County Council put down some road planings before the lower kissing-gate last year, but nowhere nearly enough to resolve the problem. Measures like this are anyway not tackling the root cause - where the flood water comes from, and how to fix it. Investigations are ongoing.

Meanwhile, some walkers facing the problem of getting past the mini-lake before the kissing-gate have resorted to walking through a gap opened up in the hedge beside the gate: they should not be doing so, and the field owner Kevin Kearns has expressed his annoyance to me that this is happening. I will be discussing the situation with Mr Kearns, our local ECC footpaths inspector, and others to try and secure a temporary work-around until a proper solution is found. I will report on the situation at the Annual Parish Meeting on Wednesday 25 April.