

Key

Parish boundary

E15845 Hatfield Peverel NDP

Figure 01

Location Plan

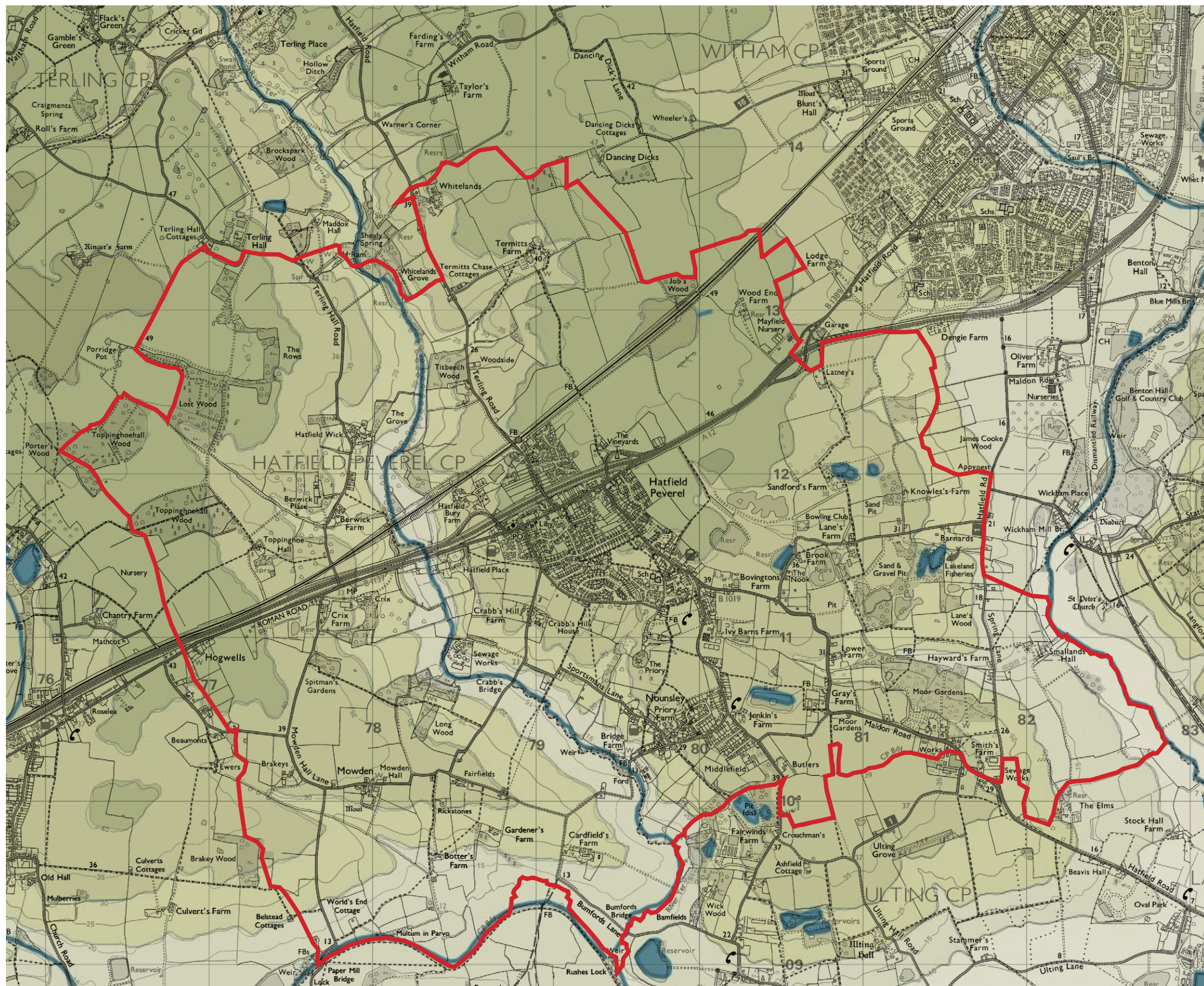
Scale: 1:25,000

September 2015



Reproduced from the Ordnance Survey map with the permission of the controller of Her Majesty's Stationery Office. Licence number: AL 10002205. © CROWN COPYRIGHT.

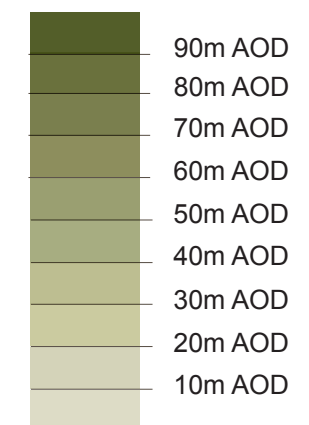
thelandscapepartnership



Key

Parish boundary

Elevation



E15845 Hatfield Peverel NDP

Figure 02

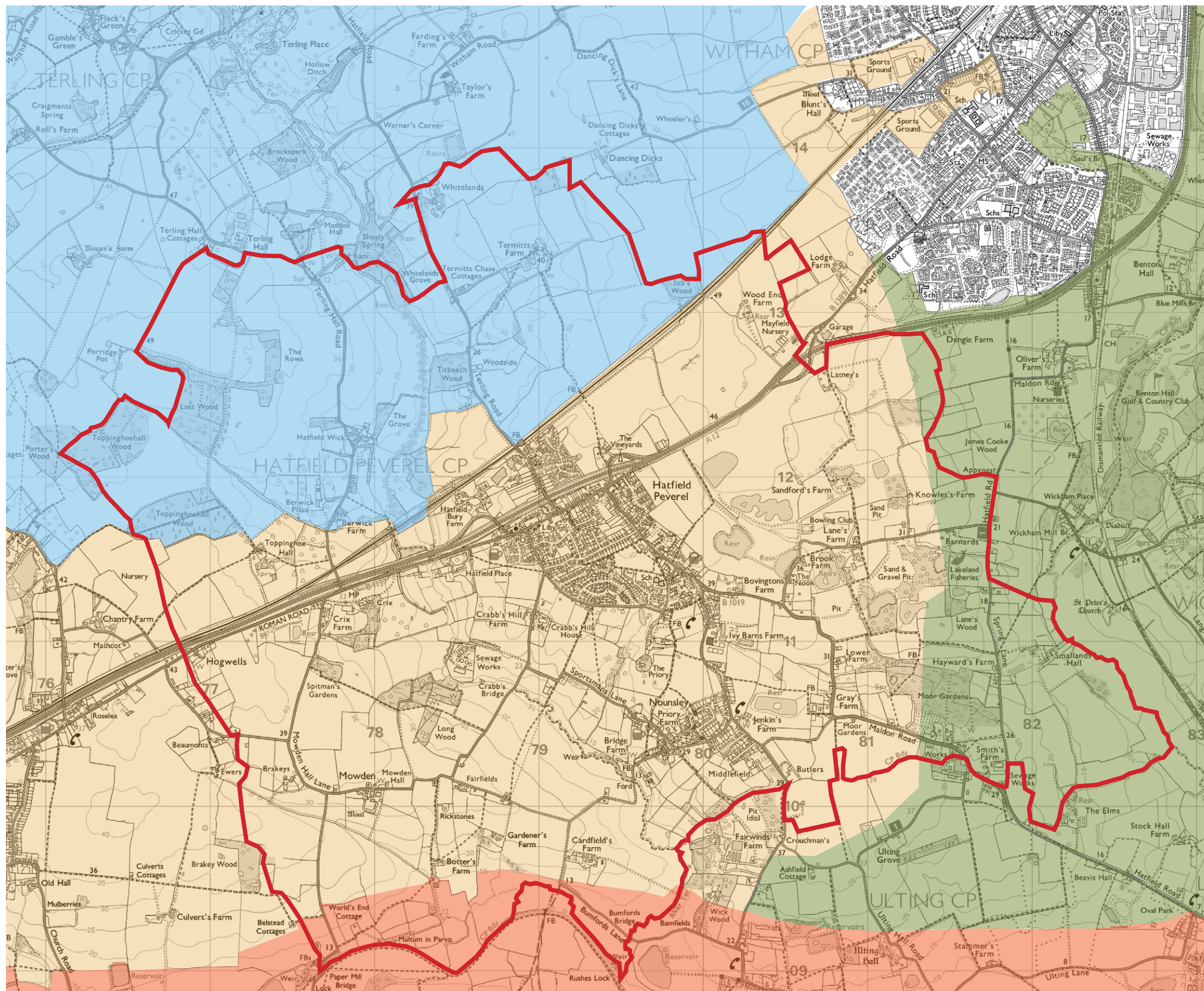
Topography Plan

Scale: 1:25,000

September 2015



thelandscapepartnership



Key

Parish boundary

Landscape Character Areas, as defined in Braintree District Core Strategy Evidence Base (Environment), September 2006

- B17 Terling Farmland Plateau
- B21 Boreham Farmland Plateau
- A9/A9a Blackwater River Valley and Blackwater River Valley Floor
- A7/A7a Lower Chelmer River Valley and Lower Chelmer river Valley Floor

E15845 Hatfield Peverel NDP

Figure 03

Landscape Character Areas

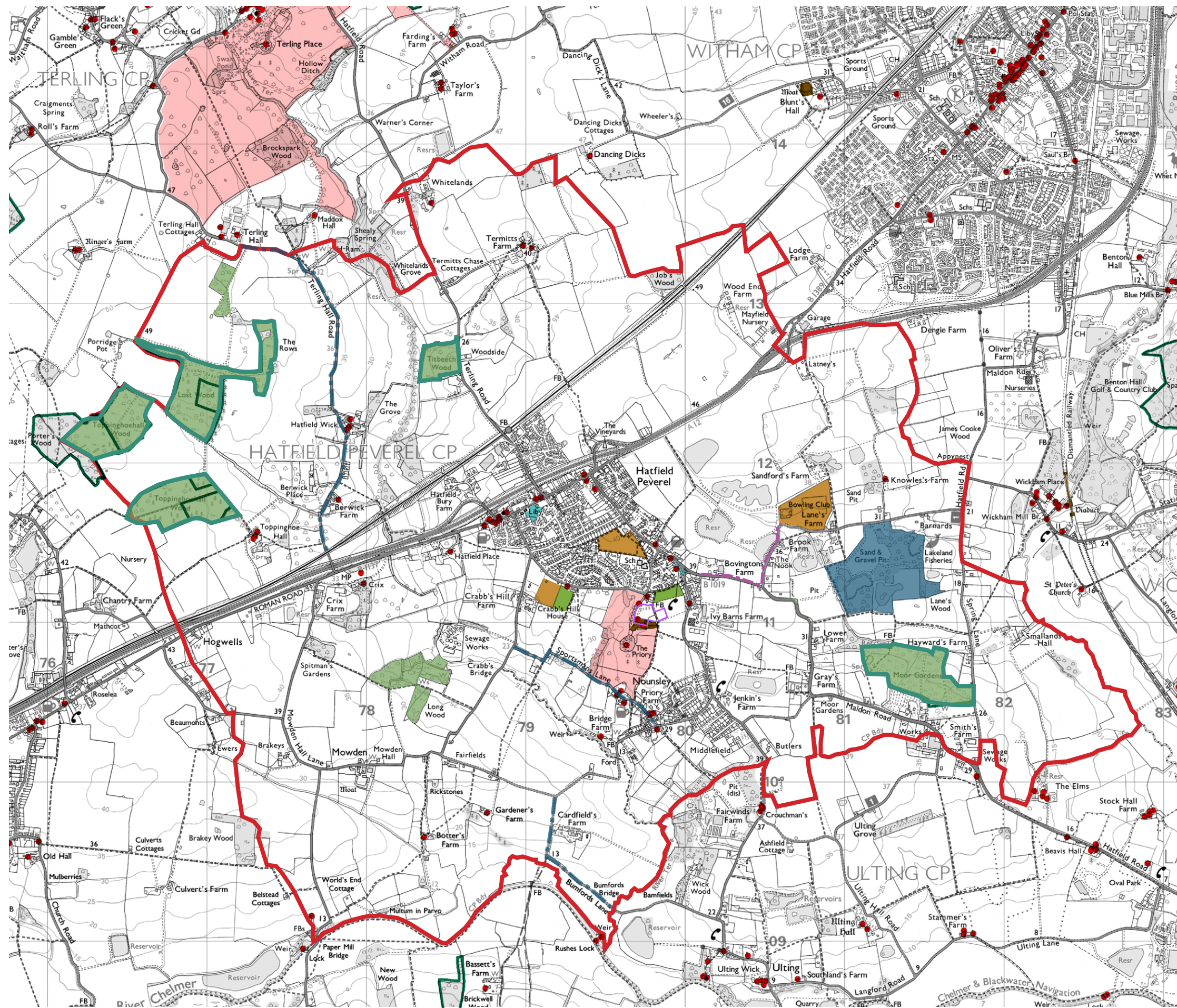
Scale: 1:25,000

September 2015



thelandscapepartnership

Reproduced from the Ordnance Survey map with the permission of the controller of Her Majesty's Stationery Office. Licence number: AL 100002205. © CROWN COPYRIGHT.



Key

- Parish boundary
- Scheduled Monument
- Listed building
- Registered Parks and Gardens
- Ancient Woodland

Local Plan designations shown within Hatfield Peverel parish boundary (as shown in Hatfield Peverel - Pre Submission Plan inset 36)

- Country Park (CS10, ADM74)
- Protected Lane (ADM54)
- Proposed Footpath/Cycleway (CS7, ADM46, 73)
- Local Wildlife Site (CS8, ADM51)
- Cemetery / Churchyards (ADM40)
- Allotments (CS10, ADM75A)
- Formal Recreation (CS10, ADM14, 75A)
- Visually Important Space (ADM2, 14)

E15845 Hatfield Peverel NDP

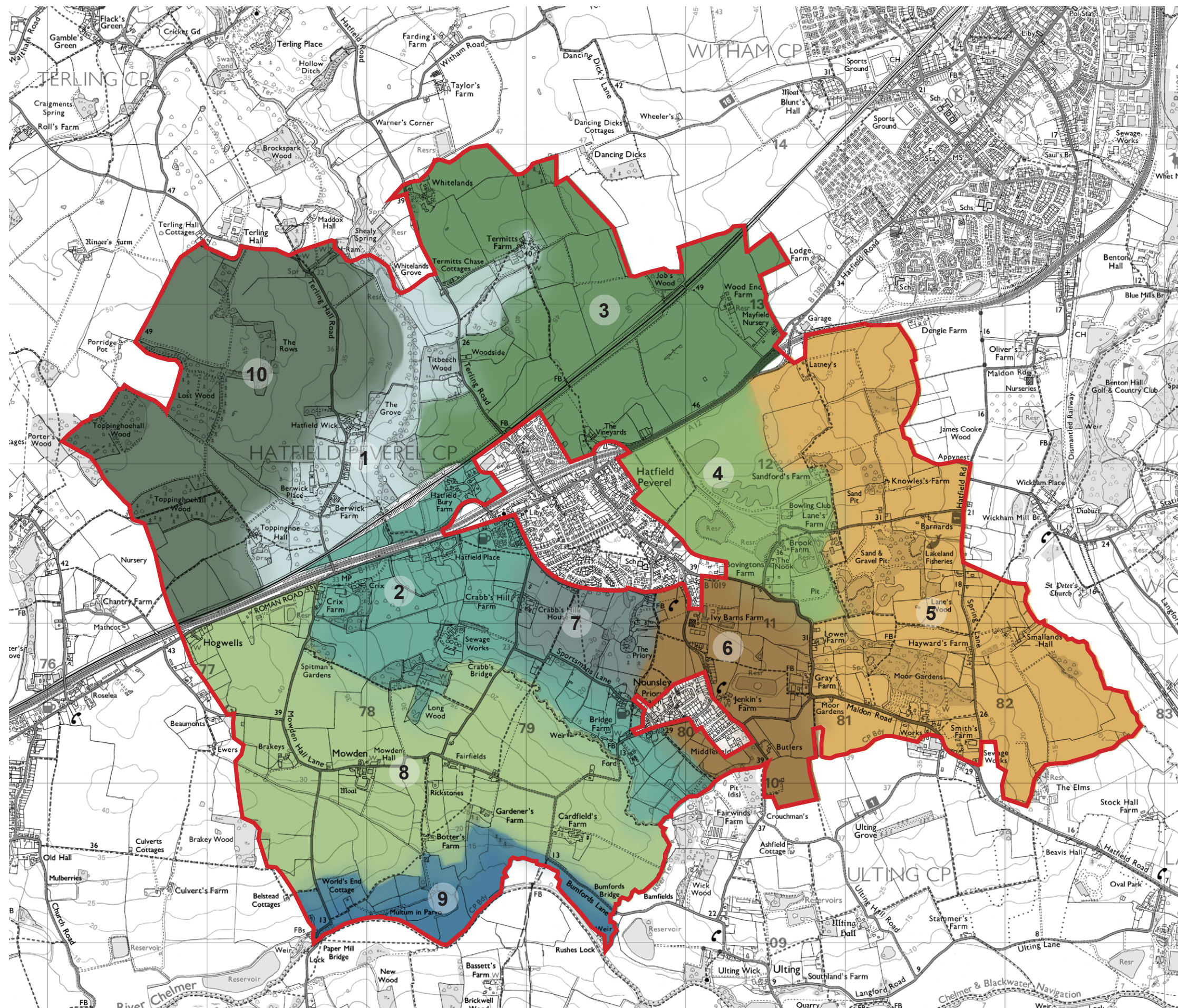
Figure 04

Landscape-related designations

Scale: 1:25,000

September 2015





Key

- Parish boundary

- 1. River Ter North:**
Stream and lower valley slopes
- 2. River Ter South:**
River and lower valley slopes
- 3. Termitts Chase:**
Elevated farmland
- 4. Wickham Bishops Road:**
Upper valley slopes with pits/
reservoirs
- 5. River Blackwater:**
Lower valley slopes
- 6. Jenkins Lane:**
Mixed farmland
- 7. Sportsmans Lane:**
Farmland and parkland
- 8. Mowden:**
Spur of elevated farmland
between river valleys
- 9. River Chelmer:**
Lower valley slopes
- 10. Terling Hall Road:**
Elevated farmland

E15845 Hatfield Peverel NDP

Figure 05

Local Landscape Character Areas

Scale: 1:25,000

September 2015

