



Parish News

Great Waltham Ford End Howe Street Little Green North End

June 2026

Great Waltham Art Show 2026

The 52nd Annual Great Waltham Art Show took place over the weekend of 2nd and 3rd of May and once again it was a very well attended and attractive show with almost 400 people visiting during the weekend. This year there were 283 pieces of framed art work on display, 159 unframed pieces and 50% of the artists exhibiting sold an item.



For the first time this year there were art workshops for children on both days. These were well attended on both occasions and our thanks go to Lucy Thorogood and Great Waltham Primary school for organising this successful innovation.

The music and refreshments are an integral part of the weekend and are always much appreciated by visitors. How fortunate we are to have such a beautiful building for the show!

The profit of £1800 will be shared between the church and village organisations.

It takes a small army of people to mount such a large show and the Art Show Committee are most appreciative for all their help

Many, many thanks to all our helpers and to all the visitors which make the show such an enjoyable weekend.

FORD END GARDEN CLUB



On Saturday the 9 May the garden club had a very successful coffee morning and plant sale. It was really good to see so many visitors enjoying coffee and cake and chatting about their gardens and what plants they had bought. Thank you to everyone who made the morning such a success.

On Sunday 7 June the garden club is having a self drive visit to Copped Hall and we will be meeting in the Ford End village car park at 1.0 pm. There is an open day at Copped Hall and we will be having a guided tour around the walled garden. Refreshments are available at the Hall and tickets are £8 if purchased on the day but £7 if bought online.

On Wednesday 15 July the garden club will be having our annual barbecue at a garden in North End and more details will be available



Inside this months Great Waltham Parish News

Local club updates, Church notices, Local events, Parish Council News & two pages of adverts for almost every need.



From The Vicarage

Summer invites us to rest - sometimes in the warmth of the sun, sometimes in the cool relief of the shade. Both are gifts. In the bright moments we feel energised; in the quieter, sheltered spaces we find room to breathe again.

My hope is that this season offers you time for both: light that lifts your spirits and shade that restores your soul. In an agitated world I pray peace whether you're basking in sunshine or pausing beneath a tree.

Wishing you joy and refreshment this summer.

Dan

Services at Blackchapel, North End June 2026

Sunday 7 th	Family Service	3pm
Sunday 21 st	Family Service	3pm

Little Waltham United Reformed Church Services for June 2026

All services begin at 10.30a.m.
Contact: Liz Hagon 01245 360874

Sunday 7th - Colin Rackham
 Sunday 14th - Marina Price
 Sunday 21st - John de Lacy
 Sunday 28th - Rev. Geoffrey Griggs

Other Events:

Thursday 4th - Coffee and Cake - 10a.m. - 12 noon
 Saturday 20th - Coffee Morning - 10 - 11a.m.



Church of England Services June 2026

Sunday 7th	11.00am	Gracefields Communion	Great Waltham
Sunday 14th	11.00am	Communion	Ford End
Sunday 21st	11.00am	Communion	Great Waltham
Sunday 28th	10.00am	Family Service	Ford End
	11.00am	Communion	Chignals

Still Waters every Thursday Evening 6.00pm -

6.30pm held at St Martin's Little Waltham
"An oasis of calm in our otherwise busy lives".

Contact: Alison Creighton Parish Administrator
Tel: 07957 228467
admin@littleandgreat.org.uk

Coffee Morning Blackchapel, North End



Come and join your neighbours for a coffee and chat

Last Wednesday in the month
10.30 - 12.00



Walthambury WI

WI members have enjoyed another busy month of activities. At our May meeting we welcomed Fiona Rose who delivered an interesting and informative talk on the Life and Work of William Morris. During the last month members have also enjoyed a tour of the beautiful gardens at Blunts Hall Witham, which was followed by a delicious cream tea. Some of us also took part in a walk around Pleshey.



In the coming weeks we are looking forward to lunch at Channels, an evening meal at the White Hart, a trip to the Chelmsford Theatre to see the Wizard of Oz, a guided walk at Ford End and a visit to Feeringbury Manor.

Our next meeting is on Tuesday 9th June, 7:00 for 7:30 start at the Legion Hall when we will hear from Lucy Lewis about the first woman bomb disposal expert.

Ford End Senior Tea

New Spring/Summer Time of 2.30pm



The next tea will be Monday 29th June at Woodstock, Church Lane, Ford End.

If you are new or thinking of coming do phone so I can decide how many cakes to provide. Hope to see you all and catch up for a good chat.

Anyone interested or has not been before or for more information please ring Sheila Bearman on 01245 237335 or 07977 077945



Little Waltham Gardening Club

Gardening Club Meeting

Wednesday 6th May

Talk by Nick Dobson on Fuchsias & Pelargoniums

An extremely interesting talk by Nick Dobson about Fuchsias and Pelargoniums with images of the vast number of both varieties that have evolved over thousands of years - Fuchsias originating in from Central an South America and Pelargoniums from South Africa.

Nick is a very knowledgeable and successful Flower show winner and is obviously passionate about these plants. He gave us valuable information on the care of and ideas for training them to give the best displays in our gardens and conservatories.

We now have four club outings to look forward to over the new few months until we resume our meetings on the first Wednesday of the month in September at the Memorial Hall, Little Waltham at 7.30pm

New Members and Visitors are always welcome.

For further information please contact Maggie Williams
Tel: 01245 360042 - Website: littlewalthamgardeningclub.co.uk
Email info@littlewalthamgardeningclub.co.uk



GREAT WALTHAM CRICKET CLUB

JUNIOR TRAINING

FOR BOYS AND GIRLS

FULLY QUALIFIED MALE AND FEMALE ECB COACHES

MONDAYS

YEAR 3 TO YEAR 6
5.30PM TO 6.30PM

YEAR 7 TO YEAR 10
6.30PM TO 8.00PM

WEDNESDAYS

ALL STARS
RECEPTION TO YEAR 3
5.30PM TO 6.30PM

MORE INFORMATION

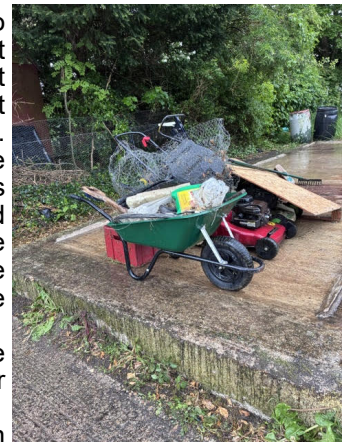
gwcc.enquiries@gmail.com

Great Waltham Horticultural Society



As a thanks to all the members who have helped and supported the Hut and the society over the 75 years it ran a Coffee, Cakes and Compost event was held on April 26th. Although sad it was an enjoyable occasion with many members attending. The Hut was emptied and ready for demolition on May 14th. The photo on the left shows some of the members who joined us and on the right all that is left of the Hut.

There are other gardening groups in



Little Waltham and Ford End. Please see their contributions for information.

Essex County Council election results

I am pleased to say that I was successful in re-election to the Broomfield and Writtle division. Thank you to all those that voted for me. The boundary has changed such that it no longer includes Gt Leighs and adds Stock and Margaretting, and retains Great Waltham, Little Waltham, Broomfield, Writtle, Pleshey, Chignal, Good Easter, Highwood, Mashbury, Roxwell and part of Chelmsford Garden Community.

I will continue to work with my Parish Councils and in the interest of the residents. Most of what I do is about fixing issues, and one would hope that would stay unchanged. But I do not know yet whether the new administration will confirm the previously agreed budget and continue the various initiatives that are important to us locally – like the adoption of the new draft Speed Strategy, the Members Highways In initiative, etc. The Broomfield and the Walthams City Council by-election (due to a resignation) was won by my colleague Seena Shah, who joins myself and Philip Wilson as the 3 Cllrs for the CCC ward. Mike Steel.



Great Waltham FESTIVAL OF CHOIRS

5th June 2026 - 6.00 pm ONWARDS

Ticket Prices Adult Ticket: £7 / Child Ticket: £5

Tickets available from:

Walthambury Stores or Call 01245 360149

St Mary and St Lawrence
Great Waltham Church

Featuring the following choirs: Great Waltham Village Choir : Chelmsford Male Voice Choir : The Sandon School : Great Waltham Primary School : Braintree Voices : Braintree Male Voice Choir

Parish Directory

To advertise in the Parish News, please contact us by email on
gwparishnews@gmail.com

If it needs
PRINTING
 from Stationery & Leaflets to a Bespoke Glossy Brochure
GIVE US A CALL
 Fast • Efficient • to Budget



T: 01787 479479
E: info@fmlitho.co.uk
W: www.fmlitho.co.uk

ROBERTS GARDEN SERVICES



Lawns, Borders,
 Hedges &
 Trees Maintained
 Small Landscaping Projects

Telephone:
 07879 003135



**Structural Steelwork,
 Steel Fabrication, Gates,
 Railings and anything
 for the garden**
 Tel: 01245 237233

enquiries@plesheyforge ltd.co.uk

Unit 20, Warners Farm,
 Main Road, Howe Street
 Chelmsford CM3 1BL
www.plesheyforge ltd.co.uk

THE ROSE & CROWN
 BETWEEN LITTLE WALTHAM & GREAT WALTHAM

A GREAT LITTLE PUB AND RESTAURANT WITH GOOD FOOD, A WARM AND FRIENDLY ATMOSPHERE

OPEN ALL DAY FOR BREAKFAST, LUNCH & DINNER

Ben and his staff will be delighted to welcome you.

Telephone: 01245 360359
www.roseandcrowingreatwaltham.co.uk

GOOD FOOD • GREAT COMPANY • WARM WELCOME

Wood Automotive

MOT's, Vehicle Servicing
 Tyres, Vehicle Diagnostics
 Air Conditioning Repair
 Clutches, Welding
 Free Local Collection

"We look forward to seeing you and your car"
 Neil and Sarah

Unit 1 Walthambury Farm
 Pleshey Road, Great Waltham
 CM3 1AZ

www.woodautomotive.co.uk
 01245 361180

Willsher and Son Electrical Contractors

- All work insured and certificates issued where applicable
- No job too small, free estimates
- Based in Great Waltham
- Reliable family business

07970 759565
info@wilsherandson.co.uk
www.wilsherandson.co.uk
 or find us on Facebook

Electrical Safety Register
 IEE SA + ECA

Chelmsford Plumbing & Heating Services

Trustworthy family run business
 All calls answered personally
 Confirmed bookings given

- *Boiler services, breakdowns, repairs
- *New boilers and heating systems
- *Plumbing repairs
- *GAS, OIL, LPG and Electrical work
- No job too small,

Work covered by a 12-month guarantee


01245 478588
 Email
sales@chelmsfordplumbingandheating.co.uk

Free Quotes

EVERETT PAINTING

- INTERIOR & EXTERIOR
- WALLPAPERING
- EST OVER 20 YRS
- FULLY INSURED
- ONLINE PORTFOLIO

TEL 07595 534872
www.everettpainting.biz



Aqualife Gallery
 Design - Build - Maintenance

Ponds, Waterfalls, Streams,
 Fountains & Wildlife Ponds
 Damp & Bog Gardens
 Cleaning, Maintenance & Renovation
 Service for existing ponds

Call Keith: 07468 451416
 Email: keith@aqualifegallery.co.uk

Old Park Meadow Natural Burial Ground



We offer burials and ash interments, funerals, services and wakes.

Adaptable to any ceremony and a completely personalised service.

Reserving a plot in advance is also possible.

01245 806332 oldparkmeadow.co.uk
 Coppice Lane, North End, Between Chelmsford & Great Dunmow, Essex, CM6 3PL

YOUR LOCAL COUNTRY STORE



ernestDOE power
where you can buy with confidence

FYFIELD, ONGAR CM5 0NS
 TEL: 01277 899464

Jayne's Upholstery Classes Ltd



10 week termly upholstery classes held at Little Waltham and Great Totham

For more information contact Jayne on 07881816889 or email jayne.interiors@googlemail.com

A & W Gowers LTD
 Specialist Joinery Manufacturers

A local family run company with many years of experience providing bespoke joinery to trade and private customers.

Conservation, Restoration, Ordinary or Contemporary, we can manufacture and install all types of work.

Windows	Fitted Furniture
Doors	Kitchens
Conservation	Wardrobes
Gates	Bookcases
Stairs	...and much more

For free friendly advice and estimates please contact us at www.awgowers.co.uk
 11owe Street, Great Waltham, Chelmsford
 Telephone: 01245 362737

Now selling eco-friendly stove briquettes

AD FUEL OILS LTD.
Your local answer!



Commercial and general public welcome with easy access for all cars and vans

Yard sales from A D Fuel Oils Ltd
 Banters Lane, Great Leighs, Nr. Chelmsford, Essex CM3 1QX
 Opening Hours: Monday-Friday: 8am - 5pm
 Saturday: 9am - 1pm

01245 362616 • www.adfueloils.co.uk

Products available for collection or delivery:

• Petrol	• Paraffin	• Barrel dispensers
• Diesel	• AdBlue	• Rotary pumps
• Kerosene	• LPG	• Boiler additive (Additive for Aga's)
• Gas Oil/Red Diesel	• 20L containers	• 205L containers
• PBO		

The Parish News relies entirely on advertising to pay its printing costs.

Please support the magazine by renewing your advert or taking out an advert to promote your business. Volunteers deliver to approximately 1000 households in the Parish.

For more information, email gwparishnews@gmail.com

GALVIN
GREEN MAN
HOWE ST.

The Perfect Garden Destination
For Every Occasion



Al Fresco Terrace Dining
Garden Bar
Kids Play Area
Bank Holiday Family Events
Terrace Private Dining
Michelin Bib Gourmand Menus

Main Rd, Howe Street, Great Waltham
Chelmsford CM3 1BG.
www.galvinrestaurants.com

BOWMAN
BESPOKE

Specialists in media units, fitted wardrobes and built in cabinetry.

Beautiful fitted furniture with a personable approach.

www.bowmanbespokeltd.co.uk

Phone: 07984947531

Email: dean@bowmanbespokeltd.co.uk

Unit 3 Walthambury Farm, Pleshey Road, Great Waltham

Christopher
THE LOCKSMITH

ARE YOUR LOCKS BEHAVING BADLY?

We Value Old Fashioned Customer Service
A Local Trusted Family Business Since 1989

Specialist in UPVC & Wooden Doors

No Call Out Charge

No Fix No Fee

All Work Fully Guaranteed

10% Senior Citizen Discount



For More Advice & Help
Call Christopher:

07772 111 222

www.christopherthelocksmith.co.uk

WILD AND ROOTED



Exclusively grass-fed beef.
Sustainably reared in Gt Waltham

ORDER ONLINE OR VISIT THE FARM
SATURDAYS 10AM-12PM

WILDANDROOTEDFARMING.CO.UK

ANDREW DAVISON
ARCHITECTS

Architect living locally.
We specialise in:

Residential Extensions
New Build Housing
Conservation Areas
Green Belt Development
Listed Properties

01277 221334

Info@andrewdavison.co.uk
www.andrewdavison.co.uk



TIMBER ASPECTS
CONSTRUCTION

"Building on Reputation"
Est 1997

All Aspects of Carpentry and Building
Listed building works

Extensions Bathrooms
Kitchens Plastering
Cladding Maintenance

Mini digger and dumper hire with driver
Registered waste carrier and dealer

Call Tim 07770 877669

A Gt Waltham based Business

YOGA
&
MEDITATION
All Abilities

hello @bohoco.life

07889 912640
Great Waltham



Barefoot Healing

Ford End
Chelmsford
07957985192



Treatments available
Reflexology
Hopi Ear Candling
Mian Dui Facial Ritual
Hand reflexology



Freeman Farm Logs
Seasoned hard wood & mixed wood
available delivered in bulk bags.

Mini bags available for collection.

www.freeman-contractors.co.uk
Fitzandrews Farm, Howe Street
Tel 01245 360232 / 07710622611



Village Roofing Services Ltd

- New Roofs, repairs and general maintenance
- 24 hour emergency call out
- Chimneys and Lead work
- Blocked guttering & drains

01245 843169
07946 242 636

Email: info@villageroofing.co.uk



SBC Building Services



General Building Works
Extensions
Construction works
Ensuring compliance with building codes and regulations.
Free Quotations
Contact Steve Hayward
07947544129

sbcbuildingservices41@gmail.com



ARTHUR FRANCIS
ACCOUNTANCY

Our aim?

To add value to your business,
help it grow and reduce stress
so that you can focus on other
critical aspects of your business.

Ltd Company Accounts and
Corporation Tax Returns
Business Consultancy
Cash Flow Management
Bookkeeping

01245 922025
info@arthurfrancisaccountancy.co.uk

JCM
SERVICES



ARBORICULTURAL
SERVICES



GROUNDS
MAINTENANCE
SERVICES

01245 408777

www.jcm-services.co.uk

Visit our website for more info

Are you struggling to find the time to get everything done?

Is your life one constant balancing act?
Why don't you let me lighten the load

Let me be your extra pair of hands,
helping you create balance in your life



Contact Me:

Francesca Bradford
07780614747

fbradford.handylittlehelper@gmail.com

www.handylittlehelper.co.uk

01245 801642

G.D. CULPIN

www.gdculpin.co.uk

Vintage Motor & Engineering Co

Repair ♦ Service ♦ Restoration



Based in Ford End providing high quality service and repair to a variety of Veteran and Vintage vehicles.

We offer a range of services from routine maintenance and minor repair, annual safety inspections, preservation, unit overhaul, event preparation through to complete restorations.
Our ethos is to repair and conserve wherever possible using traditional skills and methods thus maintaining originality.

Email info@gdculpin.co.uk gdculpin.co.uk



up up & away
pre-school

 Hulton Hall
South Street
Great Waltham
CM3 1DF
 07501 313321
 upupawaypreschool.co.uk
 upupawaypreschool@gmail.com

Looking for a preschool with a large, natural outdoor space and confident, happy children?

We offer Forest School

-  Large natural outdoor space
-  Nature inspired learning
-  Forest School sessions
-  Confident, happy children
-  Caring, experienced practitioners

Ofsted Good

We are proud to be rated GOOD by Ofsted
A 'Good' rating reflects our dedicated team, engaging curriculum and nurturing environment where children thrive and reach their full potential.

Come and visit us!



Spring & Summer Opening Hours

Monday	Closed
Tuesday	Closed
Wednesday	4.30pm to 7.30pm
Thursday	7.30pm to 11pm
Friday	4pm to 11pm
Saturday	1pm to 6pm
Sunday	1pm to 6pm

Sports fixtures and Events publicised separately. See notice boards and social media platforms.

Up up & away preschool



Today the children had an exciting and memorable visit from paramedic Caroline Hutton and her emergency response vehicle as part of our "People Who Help Us" learning. The children were full of excitement and curiosity from the moment the vehicle arrived and were eager to explore and learn more about how paramedics help people in emergencies.

The children had opportunities to look inside the vehicle, explore some of the medical equipment, try on helmets and jackets, use a stethoscope and learn simple first aid skills such as bandaging. A real "wow" moment for the children was seeing the lights and hearing the sirens safely. It was lovely to see that all of the children responded so positively and confidently, with no one feeling worried or unsettled by the experience.

I was incredibly impressed with the children's listening, engagement and enthusiasm throughout the visit. They listened carefully to Caroline, asked thoughtful questions and showed fantastic confidence and curiosity while taking part. Many children excitedly shared their own ideas and experiences and continued the learning afterwards through discussions and imaginative role play.



Great Waltham C of E Primary School



Class Europe visited Colchester Castle, which is one of the oldest castles in England. It was built by the Normans over 900 years ago and stands on the remains of a Roman temple. We explored the museum inside the castle.

We saw Roman artefacts such as pottery, coins and jewellery, as well as medieval weapons and armour. One of the most exciting parts of the trip was going into the castle vaults where we learnt lots about the history of the castle and the Roman temple that stood there before.



Our Reception and Year 5 pupils took part in engaging road safety sessions delivered by the Safer Essex Roads Partnership. Year 5 pupils participated in a hands-on session designed to build confidence and promote safe, independent travel. They explored:

- The Green Cross Code: Stop, Look, Listen, Think!
- The dangers of distractions like phones, headphones, and friends.
- How to identify safer places to cross.

North End Spring Litterpick

The coming of Spring to North End means that it is time for a litter pick. We carefully considered the new forms and requirements for the event to be covered by the Parish Council's insurance and decided they were not appropriate. The required risk-assessment for litter picking a village with narrow lanes and no pavements would hardly bring joy to the underwriter; and no one fancied completing the forms with our details and next-of-kin in advance either! However, the training for volunteers produced some interesting ideas... should it be 'leaping onto the verge to avoid on-coming tractors' or 'correct use of the litter picking stick'? After much thought, we decided that this event would be on an 'at-your-own-risk' basis!

Fortunately, the weather was clement and the verges not too overgrown for litter to be hidden. Our haul was less than usual, perhaps due to the closure of Mill Road due to flooding earlier in the year. The highlight of the collection was eight full catering cans of nitrous oxide that someone had deposited singly along Mill Road. The official advice on how to dispose of these cans safely was to put them in a box beside our official village litter bin – but as we do not have one, I took them to Freighter House (beside the Chelmsford Recycling Depot) where they were accepted.

After a hard morning's litterpicking, we adjourned to Colin and Lezley Macrea's for very welcome refreshments. Many thanks to everyone who volunteered and Colin for organizing the event – see you all again in the Autumn??



THE HUNDRED PARISHES SOCIETY www.hundredparishes.org.uk

Although the Society is not a religious organisation, we encourage visits to parish churches as they are often the oldest and most interesting building in any community. Inside, you may find images of angels in some form or another. These winged creatures are considered to be messengers of God. They also represent goodness, with a promise of heaven if you live a good life.

Angels in churches are depicted in paintings, on stained-glass windows, suspended from ceilings, carved into corbels that support roof timbers or on poppyheads at the end of pews.

Clavering church displays several angels in its medieval glass windows as well as a series of wooden angels suspended from the rafters - they have feathers all over, including on their legs.

It is easy to miss Clavering's angels(right), but not those at Furneux Pelham. Their bright colours come from a repaint in the 1960s. Some play a lute and others hold a shield with a family crest, presumably of their sponsor. Furneux Pelham also has a series of angels on windows that were painted in the 19th century by renowned artists William Morris and Edward Byrne-Jones.

Radwinter has a series of stained-glass windows with angels featuring prominently. At Elmdon, one peeps out from under the lectern from which the vicar preaches. In Linton, one of the carved poppyheads depicts a scribe resting his book on the wings of an angel.

Some churches have carvings on the corbels that support major roof timbers. Hildersham's chancel has especially colourful decoration, including angels on each of its corbels.

Over the last couple of years, I have given an illustrated talk to many local organisations, taking a peek inside some of our parish churches and including photos of angels in many guises. Ken McDonald, Secretary



Great Waltham Parish Community Care Group

The aim of the group is to provide short term and ongoing help to meet the needs of elderly local residents for whom there is no statutory provision. Predominately this will involve providing transport to local doctor and hospital appointments.

If you require the services of the group, please call our co-ordinators who are;

Gill Mitchel 01245 362215
Sara Arun 07790214307
John Lattimore, Chairman 01245 363818

Parish Councillor Vacancy



Do you want to help make a long-lasting change?

Do you have innovative ideas for the council?

We have a vacancy on the Parish Council for the Church End Ward to be filled by co-option.

For applications and further information contact: clerk@gtwaltham-pc.gov.uk

The role requires your attendance at monthly meetings, normally held on the 3rd Monday of each month, starting at 19:30hrs and some additional meetings if nominated to join a committee.

Function Space For Hire

Suitable for all functions:
Parties, Wakes, Fairs, Receptions

Hall Space Bar Garden

Contact us for hourly rates and availability
Secretary: 01245631918 or visit Social media platforms

[f](https://www.facebook.com/RoyalBritishLegion) @WRoyalBritishLegion [i](https://www.instagram.com/RoyalBritishLegion) [in](https://www.linkedin.com/company/RoyalBritishLegion) The Village, Gt Waltham, CM3



Farleigh Hospice's

Little Waltham Open Gardens & Classic Car Show



Sunday 14 June 2026

10.30am-4.30pm

£7 per person (under 16s free).

For more information visit:
farleighhospice.org/gardens



Karaoke Night
Great Waltham British Legion
**First Friday of
Every Month**
From 6:30pm
Free Entry for members / £1 Entry for guests
**Making you
the STAR**

Facebook: @WalthamBritishLegion
Location: The Village, Gt Waltham, CM3 1DF

Great Waltham Parish Council
The Pavilion, Great Waltham Recreation Ground, South Street, Great Waltham,
CM3 1DF.
Clerk, W J Adshead-Grant. Tel: 07880 717329.
E Mail: clerk@gtwaltham-pc.gov.uk

This is a summary of some items discussed at the April 2026 meeting of the Parish Council. For full details, check out the full and approved minutes of all Council meetings on the parish website (e-voice.org.uk/greatwalthamparish).

Three members of the public attended. A prospective candidate for the Chelmsford City Council by-election for Broomfield and The Walthams updated us on her intended focus should she be elected. We also noted that the red telephone kiosk survey would run to the end of the month and we will then analyse the responses. As part of his update to the meeting, in relation to National Grid's pylons scheme, our city and county councillor, Mike Steel, confirmed he has continued to campaign for a change to the proposed siting of a pylon close to Chelmsford Road by using taller pylons. We agreed our response to Essex County Council's Essex Safer Speeds Strategy consultation (available in full on the parish website). While welcoming the proposal for a new place and movement matrix for classifying roads in the county, we also stated that the Strategy could go further and more quickly adopt the type of schemes which have been successfully introduced elsewhere in the country. In particular, concerning the introduction of speed limits, we cited the results of our own parish survey in October last year where, in response to the question "Would you support a lower speed limit where you live?", 132 of the 157 respondents (84.1 per cent) said 'Yes', and for the question "Would you support a 20mph speed limit in residential areas/your community?", 129 (82.7 per cent) also answered 'Yes'.

We also agreed to form a small working party to prepare a proposal on how we work more closely with the City Council to support our strategic objective of managing the land we own on a more sustainable basis. In addition, because since our last meeting the issue of pavement parking had become even more apparent, we agreed to publicise a reminder to drivers asking that they neither obstruct footways when parking nor park on communal green spaces. And finally, we resolved to contact the City Council's street signage area to highlight the poor state of repair of the village sign at the Lark's Lane/Chelmsford Road junction.

The Council's next monthly meeting will be on Monday 15th June 2026 at the Pavilion, Great Waltham Recreation Ground, starting at 7.30pm. All are welcome to attend our public meetings. Steve Gilbert Chair

SUMMER SOIREE
Relax and enjoy music for a
summer's evening
9 JULY 2026 7.30 PM
Gt Waltham Primary School
TICKET £8 INCLUDES BBQ – GLASS OF
WINE/FRUIT JUICE
Tickets available – Walthambury
Stores, Clare Lyne 361996,
Malcolm Ward 360149
Tickets available from 15th June

SCOUT BREAKFAST
Sunday 31st May - 9am to 11am
All this for a £7 donation (all items),
£4 (2 items fewer) and tea and toast.

Scout Hut,
Blossom Way,
Great Waltham

Please support your local Scout group
The annual breakfast is an important
fundraising event and we want to keep
it going every year

GREAT WALTHAM C of E PRIMARY SCHOOL
JOIN THE FUN

Summer fete

BBQ
ICE CREAM VAN
BOUNCY CASTLE
FACE PAINTING
RAFFLE
GAMES
AND MORE!

11.30AM
-2.30PM

**SATURDAY
27TH JUNE**

Thank you for all of the contributions to this edition of the Great Waltham Parish News. Please send your contributions for the next issue, together with any enquiries or advertising requests, by email to: gwparishnews@gmail.com. The last date for inclusion in the July issue is 17th June 2026