



Parish News

Great Waltham Ford End Howe Street Littley Green North End

April 2025



VILLAGE PANCAKE RACES

On 2nd March in glorious sunshine, the Community Network and Waltham Scouts organised village pancake races at Blossom Way. Seven family teams and five adult teams had a hilarious time taking part in the relay races. There was some very competitive running and disastrous dropping of pancakes! For many children, this was the first time they had ever run in a pancake race and their faces were a delight to behold. The cup-winning family team was called "Mix and Match" as they were



from two different families, and three generations of the Blaber family won the cup for the winning adult team.

We finished the afternoon with some impromptu "dads' races" and "mums' races."

Everyone enjoyed the delicious cakes and home-made sausage rolls, and warming cups of tea and coffee, served up by the scouts.

We hope everyone comes again next year.



Congratulations to Zinnia Quilter,

from our Great Waltham parish, who has been selected for the Under 15s England Girls' Ice Hockey Squad. She is considered to be one of the top prospect junior players within the English Ice Hockey Association's elite player programme and will be heading to Lithuania in May 2025 to represent



her country. Her parents have set up a gofundme page to help raise some of the expenses <https://gofund.me/d8c383ab>. Can you help with a contribution? Or are there any local businesses, who

would like to sponsor her and get their logo placed on her Chelmsford jersey next season? If so contact zararedmond04@aol.com



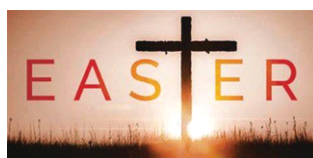
Ford End Church Yard

Spring Clear Up

Saturday 12th April 9am to 1pm

Help needed to keep our lovely Churchyard tidy. Any time from 9am until 1pm. Refreshments provided while you work.

Many tools will be provided but do bring some of your own if possible. The more help the merrier. Thank you. Call for any further information 07740 880247



Gracefields

Church of England

Services April 2025

Sunday 6th 11.00am Joint Gracefields Service
Great Waltham

Holy Week

Sunday 13th 11.00am Palm Sunday Communion
followed by APCM Ford End

Thursday 17th 6.00pm Maundy Thursday Little Waltham

Friday 18th 2.00pm Good Friday Meditation Chignals

Sunday 20th 8.00am Sunrise Communion Ford End

9.30am Easter Communion Chignals

11.00am Easter Communion Great Waltham

3.00pm Easter Egg Hunt Little Leighs

4.00pm Communion with Confirmation Little Leighs

Sunday 27th 10.00am Family Service Ford End

Still Waters every Thursday Evening 6.00pm – 6.30pm held at St Martin's Little Waltham
"An oasis of calm in our otherwise busy lives".
Please join us

Contact: Alison Bates Parish Administrator
Tel: 07957 228467
admin@littleandgreat.org.uk

Youth Cricket at Great Waltham CC in 2025

Weekly outdoor training sessions starting Monday 28th April:

- 6-7pm for school years 2-6
- 7-8pm for school years 7-10
- Multiple ECB qualified coaches
- All abilities welcome

Matches against other clubs:

- Hard ball games for U11, U13 & U15 age groups
- Soft ball games for U9 age group
- Protective equipment provided

All Stars Cricket starting Wednesday 14th May at 5:30-6:30pm.

- 8 sessions for ages 5-8
- Sign up with Great Waltham at www.ecb.clubspark.co.uk

Any Questions? Contact us at gwcc.enquiries@gmail.com

Services at Blackchapel, North End April 2025

All services at 3pm

Sunday 6th Family Service

Easter Sunday 20th Communion Service

Little Waltham United Reformed Church

Contact: Liz Hagon 01245 360874

Services for April, 2025

All services at 10.30a.m.

Sunday 6th - John Amos

Sunday 13th - Marina Price

Friday 18th - Liz Hagon

Good Friday also at 10.30a.m.

Sunday 20th - Charles de Lacy.

Easter Sunday - Holy Communion

Sunday 27th - Andy Moore

Other Events

Thursday 3rd April - Coffee and Cake 10a.m. - 12noon

Saturday 19th April - Coffee Morning 10a.m. - 11a.m

Coffee Morning Blackchapel, North End



Come and join your neighbours for a coffee and chat

Last Wednesday in the month

10.30 - 12.00

Have you seen a Yellow Legged Asian Hornet?

Please keep an eye out for it in your garden. It is an invasive species and is a huge threat to our pollinators. If you see one, **DON'T KILL IT** but report it to: alertnonnative@ceh.ac.uk Use this photo to identify and report it."

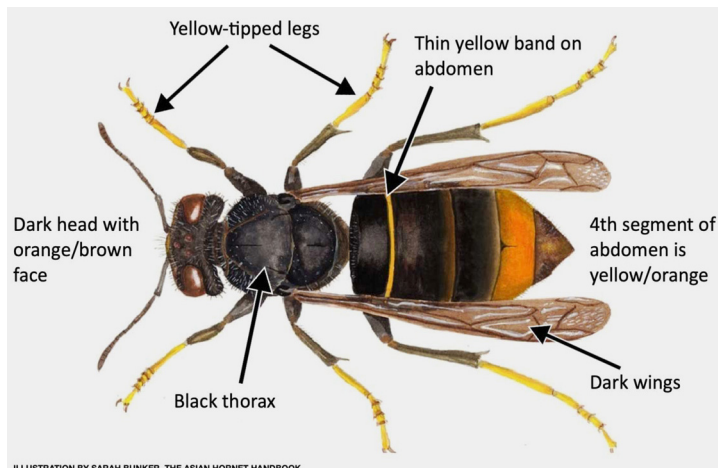


ILLUSTRATION BY SARAH BUNKER, THE ASIAN HORNET HANDBOOK

THE HUNDRED PARISHES SOCIETY

www.hundredparishes.org.uk Article by Tricia Moxey, Trustee.

Late 19th-century Survey maps record the location of numerous ponds in farmland across lowland England, but since then farming practices have changed and many have disappeared.

Well-maintained ponds are hot spots for biodiversity, supporting special plants and animals. Responding to concerns about the loss of such habitats, researchers at the Pond Restoration Research Group at University College London joined forces with others to investigate the potential for restoring such lost ponds and produced advice about the best ways to create new ones.

Following on from this, Essex Wildlife Trust identified 17,200 Essex farmland ponds on these old maps but noted that 10,400 had since disappeared. A few have been restored, and the team is working with the Farming & Wildlife Advisory Group to secure funding to help more farmers reinstate their lost ponds - <https://www.fwageast.org.uk/ponds>

However, pond restoration can be challenging - as evidenced by the difficulties faced during the project to resolve problems with Doctor's Pond in Great Dunmow (below left). In recent years it has been polluted by toxic blue green algal growth. Ambitious and costly plans were drawn up to desilt the pond which necessitated the safe removal of fish so they could be returned in due course. Work commenced last October with the installation of safety fencing and the draining of water so that a digger could be used to help remove over 1,900 tons of contaminated silt. Heavy rains made the silt very slippery, and the digger became stranded in January. By the end of February all the silt had been removed.

Future plans include landscaping of the surrounding area and replanting with suitable vegetation once the pond is refilled. It is anticipated that in the coming months this attractive pond will once again provide a great habitat for ducks, fish and dragonflies.



Walthambury WI



At our March meeting our speaker was Nicholas Henderson. We learned many interesting facts about 'The Tudor Queens', (1485 - 1603) powers behind and on the throne. 'Everything we wanted to know but were afraid to ask'. Nicholas Henderson will be returning next year to speak about part 2 of 'The Tudor Queens'.

Our next meeting is on **Tuesday 8th April, 7 for 7:30** at the Legion Hall. Richard Wollaston will be talking on the National Gardens Scheme. He will talk about the history of the NGS and how it is run today and then will show us some slides of gardens.

51st Annual Gt Waltham Art Show

**3RD AND 4TH MAY
GREAT WALTHAM
CHURCH**

**Saturday 11.30am-4.40pm
Sunday 12.30pm-4.30pm**

**Admission £1 - Refreshments
(cash only)**

**Sale of Artwork
(cash, cheque, card)**

Great Waltham Horticultural Society



AGM

**Wednesday April 9th 2025
at**

**The Pavilion. Recreation Ground,
Great Waltham
7.30 - 9.30**

Come and join us

**We aim to discuss the future of the
Society and the HUT**

**If you wish the Society to continue please
come and give your view.**

Refreshments



Parish Directory

To advertise in the Parish News, please contact us by email on gwparrishnews@gmail.com

If it needs **PRINTING**
from Stationery & Leaflets to a Bespoke Glossy Brochure
GIVE US A CALL
Fast • Efficient • to Budget

FMLitho
T: **01787 479479**
E: info@fmlitho.co.uk
W: www.fmlitho.co.uk

JCMSERVICES
AMENITY AND GROUND CARE LTD
JCM-SERVICES.CO.UK | 01245 408 777

ARBORICULTURAL SERVICES

GROUNDS MAINTENANCE

01245 408777
www.jcm-services.co.uk
james@jcm-services.co.uk

Visit our website for more info

PLESHEY FORGE LTD.

Structural Steelwork, Steel Fabrication, Gates, Railings and anything for the garden
Tel: 01245 237233

enquiries@plesheyforge.co.uk

Unit 20, Warners Farm, Main Road, Howe Street Chelmsford CM3 1BL
www.plesheyforge.co.uk

 **The Rose & Crown** 

between Little Waltham and Great Waltham

A Great Little Pub and Restaurant with good food, and a warm and friendly atmosphere

Open All Day

Ben and his staff will be delighted to welcome you.

If you want to ensure a table is available

Telephone 01245 360359

www.roseandcrowngreatwaltham.com

Wood Automotive

MOT's, Vehicle Servicing
Tyres, Vehicle Diagnostics
Air Conditioning Repair
Clutches, Welding
Free Local Collection

"We look forward to seeing you and your car"
Neil and Sarah

Unit 1 Walthambury Farm
Pleshey Road, Great Waltham
CM3 1AZ

www.woodautomotive.co.uk
01245 361180

Willsher and Son Electrical Contractors

- All work insured and certificates issued where applicable
- No job too small, free estimates
- Based in Great Waltham
- Reliable family business

07970 759565
info@willsherandson.co.uk
www.willsherandson.co.uk
or find us on Facebook

Electrical Safety Register
ELESA + ECA

Chelmsford Plumbing & Heating Services

Trustworthy family run business
All calls answered personally
Confirmed bookings given

- *Boiler services, breakdowns, repairs
- *New boilers and heating systems
- *Plumbing repairs
- *Gas, Oil, LPG and Electrical work
- No job too small

Work covered by 12-month guarantee
01245 478588

Email: sales@chelmsfordplumbingandheating.com

Free Quotes

EVERETT PAINTING

- INTERIOR & EXTERIOR
- WALLPAPERING
- EST OVER 20 YRS
- FULLY INSURED
- ONLINE PORTFOLIO

TEL 07595 534872
www.everettpainting.biz

YOGA & MEDITATION
All Abilities

hello @bohoco.life

07889 912640
Great Waltham



Old Park Meadow Natural Burial Ground

We offer burials and ash interments, funerals, services and wakes.

Adaptable to any ceremony and a completely personalised service.

Reserving a plot in advance is also possible.

01245 806332 oldparkmeadow.co.uk
Coppice Lane, North End, Between Chelmsford & Great Dunmow, Essex, CM6 3PL

YOUR LOCAL COUNTRY STORE

ernestDOE power
where you can buy with confidence

FYFIELD, ONGAR CM5 0NS
TEL: 01277 899464

Jayne's Upholstery Classes Ltd



10 week termly upholstery classes
held at Little Waltham and Great Totham

For more information contact Jayne on 07881816889 or email jayne.interiors@googlemail.com

A & W Gowers LTD
Specialist Joinery Manufacturers

A local family run company with many years of experience providing bespoke joinery to trade and private customers.

Conservation, Restoration, Ordinary or Contemporary, we can manufacture and install all types of work.

Windows	Fitted Furniture
Doors	Kitchens
Conservation	Wardrobes
Gates	Bookcases
Stairs	...and much more

For free friendly advice and estimates please contact us at www.awgowers.co.uk
Howe Street, Great Waltham, Chelmsford
Telephone: 01245 362737

Now selling eco-friendly stove briquettes

AD FUEL OILS LTD.
Your local answers!

NOW SELLING LPG AND AdBlue

Commercial and general public welcome with easy access for all cars and vans

Yard sales from A D Fuel Oils Ltd
Banters Lane, Great Leighs, Nr. Chelmsford, Essex CM3 1QX
Opening Hours: Monday-Friday: 8am - 5pm
Saturday: 8am - 1pm

01245 362616 • www.adfueloils.co.uk

Products available for collection or delivery:

• Petrol	• Paraffin	• Barrel dispensers
• Diesel	• AdBlue	• Rotary pumps
• Kerosene	• LPG	• Boiler additive (Additive for Aga)
• Gas Oil/Fred Diesel	• 20L containers	
• PBO	• 205L containers	

Walthambury Stores
Great Waltham, Essex

POST OFFICE
opening times
Monday to Friday 9am to 5.30pm
(open lunch hours)
Saturday 9am to 12.30pm

When visiting the Post Office, why not use the shop?
You will find -

Groceries, Fresh Produce, Sausages & Bacon, Newsagent, Stationery, Dry cleaning, Delicatessen, Frozen Food, Greeting Cards, Photocopying, National Lottery, Car Tax

Barrack Lane, Great Waltham
Telephone: 01245 360278

GALVIN
GREEN MAN
Howe St

We're now open every day of the week! 🍷 🍷

🌟 Mondays: Enjoy a traditional pub lunch or our Michelin Bib Gourmand menu in the pub, then return in the evening for Steak Night! 🍖

🌟 Tuesday – Sunday: Both our restaurant & pub are open, ready to serve you the best seasonal dishes & drinks! 🍷 🍷

Book your table now & make the most of seven days of great food & good times! 🍷

#Galvingreenman #NowOpenEveryDay

www.Galvinrestaurants.com

Main Rd., Howe Street, Great Waltham, Chelmsford CM3 1BG

BOWMAN
BESPOKE

Specialists in media units, fitted wardrobes and built in cabinetry.

Beautiful fitted furniture with a personable approach.

www.bowmanbespokeltd.co.uk

Phone: 07984947531

Email: dean@bowmanbespokeltd.co.uk

Unit 3 Walthambury Farm, Pleshey Road, Great Waltham

ALL ABOUT
GARDENS

Garden Maintenance
& Clearance
Tree Surgery
& Removal
Hard Landscaping



Robert - 07879 003135

WILD AND
ROOTED
FARMING



Exclusively grass-fed
Aberdeen Angus beef.
Sustainably reared in Gt Waltham

FROM FARM TO PLATE
WILDANDROOTEDFARMING.CO.UK

TMFIT

SPECIAL OFFERS

5 X ONE-TO-ONE
TRAINING £150

FREE GROUP
TASTER SESSION

tmfit.co.uk

07947 427 489

TIMBER ASPECTS
CONSTRUCTION

"Building on Reputation"
Est 1997

All Aspects of Carpentry and
Building
Listed building works

Extensions Bathrooms
Kitchens Plastering
Cladding Maintenance

Mini digger and dumper hire with
driver

Registered waste carrier and dealer

Call Tim 07770 877669

A Gt Waltham based Business

Groomio's
pet salon

Pet Grooming Salon located in Chelmsford:

1 The Village, Great Waltham, Chelmsford, Essex, CM3 1DF

CALL NOW TO MAKE AN
APPOINTMENT:

07957086049

ALTERNATIVELY YOU CAN REACH US ON ANY OF THE
FOLLOWING:

Follow on Facebook:
Groomios pet salon

Email us:
groomiospetsalon@gmail.com

Follow on Instagram:
egroomios_petsalon

Visit our website:
Groomiospetsalon.co.uk



Barefoot Healing

Ford End
Chelmsford
07957985192



Treatments available
Reflexology
Hopi Ear Candling
Mian Dui Facial Ritual
Hand reflexology

ALAN GIBSON
TRAINEE DRIVING INSTRUCTOR

07909 968535

ads_auto@icloud.com

AUTOMATIC



DRIVING LESSONS

AA

FIND ME ON THE AA WEBSITE



Village Roofing Services Ltd

- New Roofs, repairs and general maintenance
- 24 hour emergency call out
- Chimneys and Lead work
- Blocked guttering & drains

01245 843169

07946 242 636

Email: info@villageroofing.co.uk

Checka
trade

City
Guilds

SBC Building Services



General Building Works
Extensions
Construction works
Ensuring compliance with
building codes and regulations.
Free Quotations
Contact Steve Hayward
07947544129

sbcbuildingservices41@gmail.com

Natasha Allison
Physiotherapy

Womens' Health Physiotherapy

- Mummy MOT
- Pelvic floor dysfunction
- Antenatal Physiotherapy
- Postnatal Physiotherapy
- Scar treatment/management
- All obstetric & gynaecology issues

Musculoskeletal Physiotherapy

- Sports injuries
- Post-orthopaedic surgery
- Chronic pain

naphysiotherapy@gmail.com
07766500388
www.restoreyourcore.co.uk

GARDENING SERVICES

Grass Cutting (free disposal of cuttings)
Hedge Trimming
Weed Control
Lawn Treatment
Garden Clearance
General Tidy Ups
Leaf Clearance
Internal and External Painting and Decorating
Fence and Shed Painting

Reliable & friendly service
All of your gardening needs, all year round!
Discounted regular visits or one-off visits available

20% OFF

Discount on
fortnightly grass
cutting services

M.B. GARDEN
MAINTENANCE

315

PRICES FROM £15

Contact me for a free
estimate!

Call or text 07946554935

Are you struggling to find the time to get
everything done?

Is your life one constant balancing act?

Why don't you let me lighten the load

Let me be your extra pair of hands,
helping you create balance in your life



Contact Me:

Francesca Bradford

07780614747

fbradford_handylittlehelper@gmail.com

www.handylittlehelper.co.uk



ARTHUR FRANCIS
ACCOUNTANCY

Our aim?

To add value to your business,
help it grow and reduce stress
so that you can focus on other
critical aspects of your business.

Ltd Company Accounts and
Corporation Tax Returns
Business Consultancy
Cash Flow Management
Bookkeeping

01245 922025

info@arthurfrancisaccountancy.co.uk

Christopher
THE LOCKSMITH

ARE YOUR LOCKS BEHAVING BADLY?

We Value Old Fashioned Customer Service
A Local Trusted Family Business Since 1989

Specialist in UPVC & Wooden Doors

No Call Out Charge

No Fix No Fee

All Work Fully Guaranteed

10% Senior Citizen Discount

For More Advice & Help
Call Christopher:

07772 111 222

www.christopherthelocksmith.co.uk

01245 801642 **G.D.CULPIN** www.gdculpin.co.uk

Vintage Motor & Engineering Co

Repair ♦ Service ♦ Restoration




Based in Ford End providing high quality service and repair to a variety of Veteran and Vintage vehicles.

We offer a range of services from routine maintenance and minor repair, annual safety inspections, preservation, unit overhaul, event preparation through to complete restorations.

Our ethos is to repair and conserve wherever possible using traditional skills and methods thus maintaining originality.

Email info@gdculpin.co.uk gdculpin.co.uk




Aqualife Gallery
Design - Build - Maintenance

Ponds, Waterfalls, Streams,
Fountains & Wildlife Ponds


Damp & Bog Gardens

Cleaning, Maintenance & Renovation
Service for existing ponds

Call Keith: 07468 451416
Email: keith@aqualifegallery.co.uk



Great Waltham Primary School Governor Vacancy



At Waltham, we value the vital role that governors play in supporting the school's strategic direction and ensuring the best possible outcomes for our pupils. As a maintained Church of England primary school, we have a strong connection with our local community and the Chelmsford Diocese, and we are seeking individuals who can bring diverse skills, experiences, and perspectives to our governing body. Whether you have a background in education, finance, HR, or any other relevant field, your expertise and commitment could make a significant difference in shaping the future of our school. If you are interested in this opportunity, please do not hesitate to contact school to discuss the role in more detail. We would be happy to provide you with more information about the time commitment, training, and support available to our governors. Telephone: 01245 360395 Email: admin@greatwaltham.essex.sch.uk

LIFE Education Trust is growing and we have a great opportunity for a Clerk for our Mid Essex Schools.

LIFE is a Multi Academy Trust (MAT) currently with 11 schools across Havering & Essex. Our purpose is to build great learning communities where children flourish and we are looking to recruit a Governor's Clerk to our Mid Essex Hub which currently consists of:

- Margaretting/Roxwell (currently a joint Local Governance Committee (LGC)), Ford End and Dr Walkers (start date to be confirmed).

Earn £170 per meeting
(pro-rated for the Clerk Training Information sessions)

Work could be carried out at home and meetings may be able to be remote so you don't necessarily have to be local to the schools



LIFE is looking for a new Governor's Clerk.

You would be required to service:

- 12 x LGC meetings of up to 2 hours max per school per year (i.e. one every half term)
- 3 x Training/Information sessions with the Governance Professional and other Trust clerks (one at the start of each term)

Meetings of the Margaretting/Roxwell LGC are Thursdays at 9.30am. Ford End LGC are Wednesdays at 9.30am. Although there may be some flexibility in LGC meeting days & times.

If you would like to know more about the role or to apply for the position, please contact the Trust Governance Professional by email: khardy@lifeeducationtrust.com


The role...

- The Governance Professional provides templates, training & support for the Clerk to create the agenda pack (issuing with the Chair and other schools leaders) & uploading the pack to the Governor portal one week prior to each LGC meeting.
- Contact appropriate governors to confirm the meeting date & time, book the meeting room, arrange light refreshments if the meeting is face to face or arrange zoom details if the meeting is virtual.
- Take minutes of the meeting (can be by hand, via laptop, recorded via zoom).
- Type up minutes & circulate to the Chair & Headteacher/Executive head within 7 school days.
- Support the Governance Professional in ensuring other compliance documentation (records of attendance, skills audits etc) are completed.

FIND OUT MORE ABOUT US:
www.lifeeducationtrust.com




Ford End C of E Primary School



On 6th March, we celebrated World Book Day. We started the day with an assembly about our love and appreciation for books and the children had the chance to model their costumes and explain which book character they were. Prizes were awarded to children with the most creative costumes!

Our visiting author, Karen Noller, did sessions with each class. She explained to the children about using words to paint a picture in the reader's mind and the importance of writing from personal experience. In the afternoon we visited our Reading Buddies, took part in the Book Swap, and each teacher had a chance to share a book that they love. We would like to say a huge thank you to the staff, children and parents for helping to make the day so special!





Available Allotment Plots

The Parish Council has available plots at the Brook Mead allotment site in Great Waltham (behind the shop).

Sizes vary from small starter plots to larger plots, please contact the Clerk for further details:

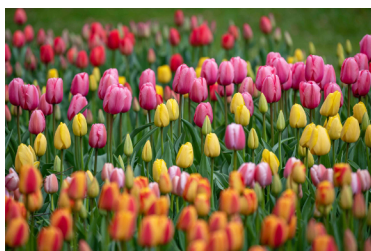
clerk@greatwalthamparishcouncil.co.uk

Ford End Gardening Club

At our March meeting it was delightful to see the beautiful posies that our speaker Maike Windhorst showed in her presentation. The title of Maike's talk was Flowers Grown All Year Round and the combination of the colours in her posies was exquisite. There are flowering plants for every month starting from the pale colours of January with Hellebores, Skimmia, Primula, Viburnum bodnantense and early narcissus. Flowers tend to become brighter as the year progresses and in September we have the dahlias, helenium, rudbeckia, hypericum and the roses are still flowering. It's a real cornucopia.

The next event in the club's calendar is a visit to **Ulting Wick on Friday 25 April** to see the wonderful displays of tulips. This is a self drive outing and we are meeting at 1.0 in the Ford End village car park so we can car share.

An important date this year is our ever popular **plant sale** and coffee morning on **Saturday 3 May from 10.0 to noon** in the Ford End village hall. Not only will there be a good selection of plants to stock up on but tea, coffee and cake. There will also be a raffle, hand made cards for sale and second hand gardening tools. Why not come along for an enjoyable gardening morning without the hard work?



Parish Councillor Vacancy

Are you passionate about your community?



Do you want to help make a long-lasting change?
Do you have innovative ideas for the council?
Do you have concerns about local issues?

Make a change, become a councillor.

We have a vacancy on the Parish Council for the Church End Ward to be filled by co-option.

For applications and further information contact:
clerk@greatwalthamparishcouncil.co.uk



GARDEN SUPPLIES AT BROOKMEAD ALLOTMENTS (Behind the village shop)

The convenient place to shop for most of your gardening requirements

Our hut is open to Hort Soc members on Sunday mornings 10am - 11am from March - October

(If you are not already a member, you can join for £6 when you visit the Hut)

Ask at the hut if you need us to supply anything specific

Stocks of non peat based compost is increasing

Great Waltham Cof E Primary School



Firstly, I am delighted to announce that we have received approval for the construction of an additional classroom. This expansion will enable us to transition to single year groups across the entire school from September 2025. The building work is already in progress, and our pupils are brimming with enthusiasm about this new chapter in our school's growth.

In sporting news, our Key Stage 2 pupils recently participated in a Cross Country Competition at Beaulieu, demonstrating both athletic prowess and exemplary behaviour. The team's performance was outstanding, and I am particularly proud of two exceptional achievements: Bertie in Year 3 secured an impressive 2nd place in his race, while Sadie in Year 6 triumphed with a 1st place finish. These accomplishments are a testament to the dedication and talent of our young athletes.



WE'RE BACK!



The scarecrows are returning to Ford End on Sunday 22nd June 2025, from 12.30 - 5pm. Prizes for the best displays, Worzel's Scarecrow Trail, refreshments in the churchyard and much, much more! Save the date!

Brighten up your garden this summer

GREAT WALTHAM HORTICULTURAL SOCIETY'S ANNUAL PLANT SALE &



**Walthambury WI
CAKE STALL**

**Saturday, May 10th
10 am-10.30 (for members)
10.30-12 noon
Great Waltham Village Hall

**Plant donations welcome
(Please drop off plants at 9.0)
Come and get your
ANNUAL FLOWER & PRODUCE
SHOW SCHEDULE
and renew your membership**

Great Waltham Parish Council

The Pavilion, Great Waltham Recreation Ground, South Street, Great Waltham, CM3 1DF.

Clerk, W J Adshead-Grant. Tel: 07880 717329.

E Mail: clerk@greatwalthamparishcouncil.co.uk

This is a summary of some of the items discussed at the February meeting of the Parish Council. For more details, see the full and approved minutes of all Council meetings on the parish website (e-voice.org.uk/greatwalthamparish).

At this meeting we agreed the revised the hiring fee charges for our allotment garden plots – these will be effective from October (we have to provide at least 6 months' notice for changes). We resolved to defer any decisions regarding the future maintenance of the village green area at Ford End until Essex Highways has completed its enquiries and procedures in relation to its highway rights. We were pleased to consider and agree a grant request from Great Waltham Cricket Club for £1,185 to renew the wooden boundary borders at its ground.

We agreed our response to the latest stage of Chelmsford City Council's Local Plan Review consultation. For the parish there is now a single development area included in the plan – a location south of the school at Ford End. In our response we said we were pleased to see that a development site previously mooted at Back Lane, Ford End has been dropped. We agreed to reiterate our previous position that we would support a development at the school location subject to the delivery of traffic calming measures which should, as a minimum, include an average speed camera scheme through the 1km stretch of the B1008 through Ford End village, and that other complementary speed reduction/traffic calming measures should be considered as part of the development. Our full response has been posted on the parish website.

In relation to the Great Waltham Recreation Ground play area refurbishment project, we noted the completion of the tendering process and made an intention to award decision in favour of the design submitted by HAGS-SMP Ltd. Now comes the hard task of securing the grants to finance the project so that the work can begin.

The next monthly meeting will be on Tuesday 22nd April at The Pavilion, Great Waltham Recreation Ground, starting at 7.00pm. As always, all parishioners are welcome to attend these public meetings. Steve Gilbert Chair

Ford End Senior Tea

The next tea will be on Monday the 14th April.

Starting at 2.30 now as lighter evenings

Hope to see you all and catch up for a good chat.

It will be at Woodstock, Church Lane, Ford End.

Anyone interested or has not been before please ring Sheila Bearman on 01245 237335 or 07977 077945



Great Waltham Parish Community Care Group

The aim of the group is to provide short term and ongoing help to meet the needs of elderly local residents for whom there is no statutory provision. Predominately this will involve providing transport to local doctor and hospital appointments.

If you require the services of the group, please call our co-ordinators who are

Gill Mitchel 01245 362215

Wendy Proctor 01245 360483

John Lattimore, Chairman 01245 363818

Thank you for all of the contributions to this edition of the Great Waltham Parish News. Please send your contributions for the next issue, together with any enquiries or advertising requests, by email to: gwparishnews@gmail.com.

The last date for inclusion in the May issue is April 17th