

# Parish News

Great Waltham Ford End Howe Street Littley Green North End

## July 2024

### Commemorating the 80th Anniversary of the Normandy Landings.



On Sunday June 9th, Great Waltham parishioners of Great Waltham solemnly marked the 80th anniversary of the Normandy Landings, a pivotal moment in World War II history. The village gathered at the Great Waltham War Memorial, where a poignant silence was observed to honour the bravery and sacrifice of those who fought on D-Day. Standard bearers stood tall, their flags fluttering gently in the breeze, embodying the spirit of remembrance and respect. The ceremony was imbued with heartfelt reverence as the village vicar delivered a moving speech. His words resonated deeply with the attendees, capturing the heroism of that fateful day in 1944. He reminded everyone of the courage displayed by the Allied forces and the enduring impact of their efforts on the course of history.

Following the ceremony, the community reconvened at the local Legion Club. The atmosphere shifted to one of camaraderie and celebration of freedom, underscored by live music from Alice Loates. Her uplifting vocals added a melodic tribute to the occasion, enriching the sense of remembrance

with some well known own wartime tunes. The gathering concluded with a traditional cream tea, offering a comforting and quintessentially British touch to the day's reflections. This commemorative event in our beautiful village served as a profound reminder of the sacrifices made for our liberty and the enduring importance of remembering history.



### SUMMER SOIREE

Relax and enjoy music for a summer's evening

**11 JULY 2024,  
7.30 PM,  
SCHOOL HALL**

**TICKET £8 INCLUDES  
BBQ – GLASS OF  
WINE/FRUIT JUICE**

*Tickets available – Walthambury  
Stores, Clare Lyne 361996,  
Malcolm Ward 360149  
Admission by ticket only*

### Ride London

On May 26th saw cyclists coming through the village for most of the day. One cyclist was a local girl, Kate Squier from Wild & Rooted at Humphries Farm. She managed the incredible 103 miles !! Barry Teader caught her in action passing the church. Congratulations to Katie and all the riders!



### The Waltham Scout Group



On Sunday May 19th saw all three sections, Beavers, Cubs and Scouts gathered at the Scout Hut to deliver our Annual May Breakfast for adults and children. What a lovely turn out

it was and a BIG thank you to everyone that came along to support us especially parents who were hands on with all sections and setting up. We are supported by our Trustees, Mike Steel, Helen Wright and Philip Wilson. Our treasurer Helen Mansfield was presented with her 10 year long service award. Everyone worked tirelessly to provide a very full English Breakfast. The Beavers cleared cutlery and plates whilst the Cub Scouts served the food skilfully cooked by our Scouts. Our section leaders Chris McCann, Matt Lake, Hayley Thompson and Hayley Wareham held Food Safety Level 2 Certificates to ensure our young people complied with food hygiene expectations. We hope you all had a lovely morning. See you next Year!

**Little Waltham United Reformed Church**  
**Services for July 2024**  
**All Services begin at 10.30 a.m.**

**Sunday 7th** Marina Price  
**Sunday 14th** Rev. Geoffrey Griggs  
**Sunday 21st** Ian Chamberlain  
**Sunday 28th** Rev. Hans Stein - Holy Communion.

**Other Events**

**Thursday 4th July** - Coffee/Tea and Cake from 10am until 12 noon  
**Saturday 20th July** - Coffee Morning from 10am. until 11am



**Church of England Services**  
**July 2024**

**Sunday 7<sup>th</sup>** 11.00am Communion Great Waltham  
**Sunday 14<sup>th</sup>** 10.00am Communion Ford End  
**Sunday 21<sup>st</sup>** 11.00am Joint Summer Communion Chignals CM1 4TA  
**Sunday 28<sup>th</sup>** 11.00am Joint Summer Communion Great Leighs CM3 1PP

**Contact: Alison Bates Parish Administrator**  
**Tel: 07957 228467 admin@littleandgreat.org.uk**  
**Please visit our website for further information: -**  
<https://www.greatwalthamchurch.org.uk>

**BOOKLAUNCH**

"A dialogue between the things of heaven and earth - the gritty reality of human emotion and experience...This book is full of kindness, gentleness, acceptance and courage."  
**Bishop Guli Francis-Dehqani**

**Wednesday 10th July**  
**St Martins, Brook Hill, Little Waltham, CM3 3LJ**  
**7:30pm**

DAN PIERCE  
**EARLYBIRD & NIGHTFULNESS**  
PRAYERS AND POEMS FOR THE BEGINNING AND ENDING OF THE DAY

**Services at Blackchapel, North End**  
**July 2024**

**Sunday 7<sup>th</sup>** Family service at 3pm  
**Sunday 21<sup>st</sup>** Family service at 3pm

A book written by our very own Rev Dan Pierce. These are a few quotes about the book.  
*"Combining a really old-skool Celtic sensibility and nature connection with very modern-day urban times. Dan offers fragments that are part prayer, part poetry, part philosophy"* Paul Northrop Creative Director Greenbelt Festival.  
*"....heartfelt honest and soulful...I adored the illustrations scattered throughout ...."* Jonny Baker, Author and creative, Britian Hub Director at the Church Mission Society.  
*" If you experience faith more as poetry than prose then this delightful collection will appeal to you. A patchwork of prayers and poems for the ups and downs of life, the ebb and flow of faith, the longings and desires of the heart. You won't find any trite certainties or easy answers ..."* Guli Francis-Dehqani Bishop of Chelmsford.  
*"This book is an honest and deep articulation of the doubt and struggle, joy and life that comes with following the way of Jesus Christ. His collection of thoughts, prayers and muses are a gift to the church and anyone on a journey of faith discovery."* Reverend Matt Woodcock, best-selling author of Becoming Reverend and Radio 2 contributor

**June 20, 2024** marked one-year anniversary of the **St Francis Community Pop Up Food Store**, a mobile social supermarket that has become a lifeline for many households across Chelmsford. With generous support from The Church of England, Chelmsford City Council, Essex County Council and Feeding Britain, the initiative has grown significantly, now serving over 170 households across the Chelmsford area.  
 "We've come a long way since that first day," said Ruth Pierce, Community Organiser for the Pop Up. "We've learned a lot, and while there's still much more to learn, we're committed to adapting and meeting the needs of our community. Our mission goes beyond providing food; we aim to offer a friendly face and a sense of community for those who are struggling." One visitor noted, "This is so much more than food. Just being offered a cup of tea makes me feel loved." Another added, "This is a godsend for me."

As we celebrate this milestone, we are reminded of the resilience and generosity of the Chelmsford community. Looking forward, the Pop Up is dedicated to expanding its services and finding new ways to support those in need. For more information and to find out how you can access the service, please visit our Facebook page and support the project financially through justgiving or email [ruth@stfranciscommunity.church](mailto:ruth@stfranciscommunity.church)

**Facebook:** [St-Francis-Community-Pop-Up-Food-Store](https://www.facebook.com/St-Francis-Community-Pop-Up-Food-Store)

**Just Giving:** [checkout.justgiving.com/c/3552576](https://www.justgiving.com/c/3552576)



**Coffee Morning**  
**Blackchapel North End**

Come and join your neighbours for a coffee and chat for just £1.



Last Wednesday in the month

**10.30 - 12.00**

## Ford End Gardening Club Trip to Eltham Palace



We had our annual coach out on Saturday 22 June and had a really enjoyable day visiting Eltham Palace and gardens which are in south London and have views across to the City. The Great Hall is the only substantially remaining part of the medieval royal palace of Eltham. It was built for Edward IV in the 1470s and Henry VIII spent much of his childhood there. In 1936 Stephen and Virginia Courtauld completed a mansion adjoining the palace and the interior is an outstanding showcase of 1930s high fashion. The Palace which is partly surrounded by a moat has beautiful gardens including a sunken rose garden and a rock garden with a cascade. Everyone enjoyed strolling round the gardens and admiring the planting.

The Gardening Club is having a barbecue on Wednesday 17 July (for members only) at a garden in North End and starting at 6.0pm for 6.30pm. Enid Adcock will be emailing members about this event and would like everyone to bring a salad or dessert and also their own plates and cutlery.



Do you enjoy getting out into the countryside using the local public rights of way network of footpaths, bridleways and byways? Would you be willing to volunteer to

assist with carrying out surveys of the local network, assist with vegetation cutting, carry out basic maintenance tasks and assist with promotion of the network etc. together with likeminded people?

I am interested in establishing a Parish Paths Partnership group within Great Waltham Parish to enhance the current rights of way management carried out by Essex Highways, Chelmsford City Council and local landowners and farmers and am gauging local interest to see if this is something worth pursuing further with the Parish Council to enhance our local community. Following the Annual Parish Assembly back in May it is clear that there is already some local interest, but I did suggest that I would put an article in the Parish News to reach out into the wider community to garner interest. So if you are interested, even just a little bit, I would be pleased to hear from you.  
[matthew.bradley12@outlook.com](mailto:matthew.bradley12@outlook.com)

### Great Waltham Parish Community Care Group

The aim of the group is to provide short term and ongoing help to meet the needs of elderly local residents for whom there is no statutory provision. Predominately this will involve providing transport to doctor or hospital appointments.


**If you require the services of the group, please call our co-ordinators who are**

Gill Mitchell 01245 362215

Wendy Proctor Tel. 01245 360483

John Lattimore, Chairman Tel. 01245 363818

*SEICENTO*



The Sacred Music of  
Monteverdi  
and his contemporaries  
for voices, period instruments and continuo

Introduced and directed by  
Philip Thorby

Great Waltham Church CM3 1AR  
Saturday August 3rd at 5.00pm

Admission free - retiring collection  
Further information:  
Annabel Malton 01245 360240 [annabel@maltons.me.uk](mailto:annabel@maltons.me.uk)

**SEICENTO** directed by Philip Thorby returns to Great Waltham for a performance of Monteverdi's sacred music. The concert will be the result of 4 days of intensive study and rehearsal by some of the best amateur early musicians from Essex and surrounding counties under Philip's inspirational direction. The Magnificat and Dixit Dominus for 8 solo voices, violins, viols and continuo and the 7-part Gloria form the backbone of this programme of music, presented as it might have been performed in the 1640s when it was first written. Do join us for this feast of Venetian music on Saturday August 3<sup>rd</sup> at 5.00pm in Great Waltham Church. Admission is free with a retiring collection. Further details from Annabel Malton 01245 360240 [annabel@maltons.me.uk](mailto:annabel@maltons.me.uk)

# Parish Directory

To advertise in the Parish News, please contact us by email on [gwparishnews@gmail.com](mailto:gwparishnews@gmail.com)

If it needs **PRINTING**  
from Stationery & Leaflets to a Bespoke Glossy Brochure  
**GIVE US A CALL**  
Fast • Efficient • to Budget



**T: 01787 479479**  
**E: [info@fmlitho.co.uk](mailto:info@fmlitho.co.uk)**  
**W: [www.fmlitho.co.uk](http://www.fmlitho.co.uk)**



**ARBORICULTURAL SERVICES**  
**GROUNDS MAINTENANCE**

**01245 408777**  
[www.jcm-services.co.uk](http://www.jcm-services.co.uk)  
[james@jcm-services.co.uk](mailto:james@jcm-services.co.uk)

Visit our website for more info



**Structural Steelwork, Steel Fabrication, Gates, Railings and anything for the garden**

Tel: 01245 237233  
[enquiries@plesheyforge.co.uk](mailto:enquiries@plesheyforge.co.uk)

Unit 20, Warners Farm, Main Road, Howe Street Chelmsford CM3 1BL  
[www.plesheyforge.co.uk](http://www.plesheyforge.co.uk)

**The Rose & Crown**  
between Little Waltham and Great Waltham



A Great Little Pub and Restaurant with good food, and a warm and friendly atmosphere

Open All Day

Ben and his staff will be delighted to welcome you. If you want to ensure a table is available

**Telephone 01245 360359**  
[www.roseandcrowngreatwaltham.co.uk](http://www.roseandcrowngreatwaltham.co.uk)

**Wood Automotive**

MOT's, Vehicle Servicing  
Tyres, Vehicle Diagnostics  
Air Conditioning Repair  
Clutches, Welding  
Free Local Collection

*"We look forward to seeing you and your car"*  
Neil and Sarah

Unit 1 Walthambury Farm  
Pleshey Road, Great Waltham  
CM3 1AZ  
[www.woodautomotive.co.uk](http://www.woodautomotive.co.uk)  
01245 361180



**Willsher and Son Electrical Contractors**

- All work insured and certificates issued where applicable
- No job too small, free estimates
- Based in Great Waltham
- Reliable family business

07970 759565  
[info@willsherandson.co.uk](mailto:info@willsherandson.co.uk)  
[www.willsherandson.co.uk](http://www.willsherandson.co.uk)  
or find us on Facebook



**Chelmsford Plumbing & Heating**

Trustworthy family run business  
All calls answered personally  
Confirmed bookings given

- \*Boiler services, breakdowns, repairs
- \*New boilers and heating systems
- \*Plumbing repairs
- \*Gas, Oil, LPG and Electrical work

No job too small  
Work covered by 12-month guarantee

**01245 478588**

Email: [sales@chelmsfordplumbingandheating.co.uk](mailto:sales@chelmsfordplumbingandheating.co.uk)



Free Quotes

**EVERETT PAINTING**

- INTERIOR & EXTERIOR
- WALLPAPERING
- EST OVER 20 YRS
- FULLY INSURED
- ONLINE PORTFOLIO

**TEL 07595 534872**  
[www.everettpainting.biz](http://www.everettpainting.biz)




**Village Roofing Ltd**

- New Roofs, repairs and general maintenance.
- 24 hour emergency call out.
- Chimneys and Lead work
- Blocked guttering & drains.

01245 843169  
07946 242636  
email: [info@villageroofing.co.uk](mailto:info@villageroofing.co.uk)



**Old Park Meadow Natural Burial Ground**




We offer burials and ash interments, funerals, services and wakes.

Adaptable to any ceremony and a completely personalised service.

Reserving a plot in advance is also possible.

01245 806332 [oldparkmeadow.co.uk](http://oldparkmeadow.co.uk)  
Coppice Lane, North End, Between Chelmsford & Great Dunmow, Essex, CM6 3PL

**YOUR LOCAL COUNTRY STORE**



**ernest DOE power**  
*where you can buy with confidence*

FYFIELD, ONGAR CM5 0NS  
TEL: 01277 899464

**Jayne's Upholstery Classes Ltd**



10 week termly upholstery classes held at Little Waltham and Great Totham

For more information contact Jayne on 07881816889 or email [jayne.interiors@googlemail.com](mailto:jayne.interiors@googlemail.com)

**A & W Gowers LTD**  
Specialist Joinery Manufacturers

A local family run company with many years of experience providing bespoke joinery to trade and private customers.

Conservation, Restoration, Ordinary or Contemporary, we can manufacture and install all types of work.

Windows	Fitted Furniture
Doors	Kitchens
Conservation	Wardrobes
Gates	Bookcases
Stairs	...and much more

For free friendly advice and estimates please contact us at [www.awgowers.co.uk](http://www.awgowers.co.uk)  
Howe Street, Great Waltham, Chelmsford  
Telephone: 01245 362737  
Now selling eco-friendly stove briquettes

**AD FUEL OILS LTD.**  
*Your local answer!*

**NOW SELLING LPG AND AdBlue**



Commercial and general public welcome with easy access for all cars and vans

Yard sales from A D Fuel Oils Ltd  
Banters Lane, Great Leighs, Nr. Chelmsford, Essex CM3 1QX  
Opening Hours: Monday-Friday: 8am - 5pm  
Saturday: 8am - 1pm  
**01245 362616 • [www.adfuelfuels.co.uk](http://www.adfuelfuels.co.uk)**

Products available for collection or delivery:

• Petrol	• Paraffin	• Barrel dispensers
• Diesel	• AdBlue	• Rotary pumps
• Kerosene	• LPG	• Boiler additive
• Gas Oil/Rod Diesel	• 20L containers	(Additive for Age's)
• PBO	• 205L containers	

**Walthambury Stores**  
Great Waltham, Essex



**POST OFFICE** Post Office opening times  
Monday to Saturday 7am to 8.00pm  
(open lunch hours)  
Sunday 8am to 6.00pm

When visiting the Post Office, why not use the shop? You will find -

Groceries, Fresh Produce, Sausages & Bacon, Newsagent, Stationery, Dry cleaning, Delicatessen, Frozen Food, Greeting Cards, Photocopying, National Lottery, Car Tax

**Barrack Lane, Great Waltham Telephone: 01245 360278**

## Parish Council welcomes our Community Policing Team



On 18<sup>th</sup> May the Parish Council hosted officers from Chelmsford and Maldon's Community Policing Team at the Pavilion, Great Waltham Recreation Ground. Although timings meant the event could only be advertised beforehand on social media and mentioned at the Parish Assembly, the number of attendees was still fewer than expected. However, the Council will look to arrange further similar events so that residents will continue to have the opportunity to drop by, have a tea/coffee and discuss local crime and policing matters which concern them with members of the Team.

The photograph shows PSCOs with Steve Gilbert, chair of the Parish Council.

## A warm welcome to new Walthambury village store owners

Walthambury Stores welcomed new owners in April, as Pauline and Keith Newton retired after 17 years at the helm. Haydar (known as H) Gultekin and his wife Jan bring with them considerable experience in the retail trade and say they have very much appreciated the warm welcome from villagers.

"I was looking for a new business opportunity and when I came to Great Waltham, I thought it was a lovely little village," says Haydar. "I started talking to Keith and Pauline about buying the shop and I am delighted that we could go ahead with the sale. They have done a great job and I wish them well.

"A refurbishment programme has already begun and we will be adding new product lines as well as keeping existing ones, especially popular items such as farm eggs, local honey and sausages and bacon. It's very much about giving people what they want."

Haydar emphasises that he sees the Post Office as an essential service for the village. Both he and Jan are now qualified postmasters and will be working behind the Post Office counter, as well as in the shop alongside their hard-working team of staff.

Prior to taking over, Haydar worked alongside his brother and other family members running general stores in and around areas including South Woodford, Hornchurch and Romford, while Jan worked in the special needs sector.

Opening hours for the shop have already been extended, and it is now open Monday-Saturday 7am-8pm and on Sundays from 8am-6pm.

Pauline and Keith, together with their children Abbey and Tom, took over the business in December 2006. Pauline added: "We were very sad to leave Walthambury Stores and would like to say a big thank you to all our many customers and friends for their support over the years. We will very much miss being at the centre of the village and wish Haydar and Jan all the very best."



Can you believe that its 10 years since that great day when the Tour de France passed through the Parish! To commemorate this occasion a few local cyclists are planning a ride out to Great Sampford to repeat a similar ride undertaken 10 years ago as part

of the Tour de France weekend of celebrations to join a section of the route that formed part of Stage 3 of the Tour de France from Cambridge to London officially ridden on 7<sup>th</sup> July 2014. The ride will be around 50 miles but at the time of going to press a date has not been finalised so please watch out on Great Waltham Grapevine for updates. We are looking at a July weekend day before the school holidays

Please note that this is not an official event, riders ride at their own risk and unlike Le Tour there is no sweeper van or mechanical support other than fellow riders, so please do come prepared. Any questions [matthew.bradley12@outlook.com](mailto:matthew.bradley12@outlook.com)

## Bee Orchids.



This year has been great for Bee Orchids. You may have spotted some on Banbury Square, but most have appeared on the large green at the junction of Cherry Garden Road and Barrack Lane. More than 50 plants. Bee Orchids mimic a female bee so that the male will land on it and try to mate, and instead pollinate the flower. Sadly, the right bee species does not live in the UK so this Orchid self-pollinates here. To

protect these amazing flowers grass is left long until late July to allow them time to set seed.



“

**It's more than just broadband, it's homes just a video call away keeping us close, no matter the miles.**

”



**Just visit:**  
[countybroadband.co.uk/connectivemoments](https://countybroadband.co.uk/connectivemoments)



**GALVIN GREEN MAN** HOWE ST.

**JOIN US TO WATCH THE UEFA EURO 2024 IN STYLE!**



**EXCLUSIVE FOOTBALL DINING PACKAGE.**

**PRIVATE VIEWING: ENJOY THE MATCHES IN THE COMFORT OF YOUR OWN PRIVATE ROOM.**

**FOOTBALL DINING PACKAGE:**

**SNACKS TO START YOUR MATCHDAY EXPERIENCE.**

**PRE-MATCH MAIN COURSE TO FUEL YOUR EXCITEMENT.**

**HALF-TIME DESSERT TO KEEP THE ENERGY UP.**

**£50PP**

**Football Package**



**CAPACITY: ACCOMMODATES 6-12 GUESTS.**

**EXPERIENCE THE EXCITEMENT OF UEFA EURO 2024 WITH YOUR OWN EXCLUSIVE SPACE.**

**CONTACT OUR TEAM TO RESERVE YOUR PRIVATE ROOM AND ENJOY AN UNFORGETTABLE FOOTBALL EXPERIENCE AT GALVIN GREEN MAN.**

**CHEER ON YOUR TEAM WITH GREAT FOOD, GOOD COMPANY, AND A FANTASTIC ATMOSPHERE!**

**WWW.GALVINRESTAURANTS.COM**

**RECEPTIONGREENMAN@GALVINPUBCO.COM**

**MAIN ROAD, HOWE STREET, GREAT WALTHAM CM3 1BG**

**01245 408820**



## Great Waltham C of E Primary School

We were really pleased to be invited to take part in The Great Waltham Festival of Choirs. It was a wonderful showcase of musical talent and we are so proud of the school choir who sang beautifully on the night. They thoroughly enjoyed the experience and are looking forward to their next performance at the Year 6 Leavers service.

There has been much to celebrate with our pupils competing in local sports events. Our netball team is through to the High Five finals and Year 2 finished 2nd out of 42 schools in a mini games at CSAC. The children performed well in the district field and athletics events, winning the girls throwing and many other children being placed or finishing respectably in their events. Well done to all involved.

On Saturday 6th July we are holding our Summer Fete from 10am to 1pm so please come along and support the school if you can. Justine Brooks Headteacher



## Ford End C of E Primary School

In June, Ford End Primary were delighted to welcome in The Music Man Project, which is a multi-award-winning, world record-breaking international music education charity for people with learning disabilities. The young adults sang, danced and played their instruments incredibly well and had everyone up on their feet, joining in! Our pupils absolutely loved their concert and we look forward to hopefully welcoming them to Ford End again next year.



### Press Release - Website Refresh for FORD END:

We are delighted to announce the launch of our brand new website as part of a website refresh project for 9 LIFE Education Trust schools. Created to both showcase our lovely school community and designed with users in mind to help parents, pupils

and other stakeholders navigate easily to the information they need. Explore our new site here: <https://fordendschool.com/>



The WI holds monthly meetings at the British Legion Hall, on the 2nd Tuesday of the month at 7.30pm. We have interesting talks, go on visits/walks etc and lots more but enjoy socialising too! Guests and new members very welcome.

Do come and join us. Contact [walthamburywi@gmail.com](mailto:walthamburywi@gmail.com)

## LITTLE WALTHAM GARDENING CLUB

In the summer months the Club organises afternoon outings to N.G.S gardens in Essex. In May we enjoyed a beautiful garden at 'Heyrons' in High Easter. The season was so advanced that most of the tulips were over and in their place camassias and irises created a glorious welcome to summer. In June we went to 'Blunts Hall' in Witham. The temperature was well below average for the time of year, but the warm welcome made up for that. We enjoyed a tour of the gardens - a restored 3 acre Victorian garden, a courtyard garden, orchards and a woodland walk. In July we plan to visit 'Isabella's Garden' in Leigh on Sea when hopefully the weather will be warmer for us. In August we plan to visit Phyllis Currie Nature Reserve in Great Leighs. The warden has kindly agreed to give us a guided tour, so we won't miss any wildlife. On 4th September we return to our evening meetings in the Memorial Hall with Maike Windhorst giving us a presentation on 'New Ideas for Growing Flowers All the Year Round' Visitors and new members very welcome.

For more information please see website or phone me on 01245 360042.



GALVIN  
**GREEN MAN**  
HOWE ST.  
THE TASTE OF SUMMER IS BACK

FOUR-COURSE MENU CELEBRATING  
THE FLAVOURS OF SUMMER.

**£42 PER PERSON**  
AVAILABLE FROM 9TH JULY - 13TH  
SEPTEMBER 2024.  
TUESDAY TO FRIDAY FOR LUNCH  
AND DINNER.



WWW.GALVINRESTAURANTS.COM  
MAIN RD, HOWE STREET, GREAT WALTHAM,  
CHELMSFORD CM3 1BG.

**BOWMAN  
BESPOKE**

Specialists in media units, fitted  
wardrobes and built in cabinetry.

Beautiful fitted furniture with a  
personable approach.

www.bowmanbespokeltd.co.uk  
Phone: 07984947531  
Email: dean@bowmanbespokeltd.co.uk

Unit 3 Walthambury Farm, Pleshey Road, Great Waltham


**ALL ABOUT  
GARDENS**

Garden Maintenance  
& Clearance  
Tree Surgery  
& Removal  
Hard Landscaping



**Robert - 07879 003135**

**WILD AND  
ROOTED**  
FARMING



Exclusively grass-fed  
Aberdeen Angus beef.  
Sustainably reared in Gt Waltham

FROM FARM TO PLATE  
WILDANDROOTEDFARMING.CO.UK

**TMFIT**

**SPECIAL OFFERS**

5 X ONE-TO-ONE  
TRAINING £150

FREE GROUP  
TASTER SESSION

tmfit.co.uk  
07947 427 489

**TIMBER ASPECTS  
CONSTRUCTION**  
"Building on Reputation"  
Est. 1997

All Aspects of Carpentry  
and Building

Listed building works  
Extensions Bathrooms  
Kitchens Plastering  
Cladding Maintenance  
Mini digger and dumper hire  
with driver  
Registered waste carrier and  
dealer  
Call Tim 07770 877669  
A Gt. Waltham based business

**Petz & Potz**

Happy cat; happy home



Local lady pet owner  
and horticulturist will  
look after your pets or  
plants while you are  
away (short or long  
term).

Ensuring that your pets  
are happy & cared for in  
their own surroundings.



**07880 700382**

*Barefoot Healing*

Ford End  
Chelmsford  
07957985192



Treatments available  
Reflexology  
Hopi Ear Candling  
Mian Dui Facial Ritual  
Hand reflexology

Late evening appointments

Thinking of an extension or  
conversion?  
Planning a home  
refurbishment?




**All domestic & commercial  
work undertaken  
Whatever your building  
requirements, we can help**

To find out more call 07762 811549  
or email [dtbuilders21@gmail.com](mailto:dtbuilders21@gmail.com)  
Based in Great Waltham



SBC Building Services



General Building Works  
Extensions  
Construction works  
Ensuring compliance with  
building codes and regulations.  
Free Quotations  
Contact Steve Hayward  
07947544129.  
[sbcbuildingservices41@gmail.com](mailto:sbcbuildingservices41@gmail.com)

**Natasha Allison  
Physiotherapy**

Womens' Health Physiotherapy

- All obstetric & gynaecology issues
- Scar treatment (following C-section, perineal tear, episiotomy or gynaecology surgery)
- Antenatal physiotherapy
- Postnatal physiotherapy
- Pelvic floor dysfunction
- Mummy MDT

Musculoskeletal Physiotherapy

- Sports injuries
- Post-orthopaedic surgery
- Chronic pain

Appointments available at  
The Nesting Place &  
in Great Waltham

To enquire please  
contact Natasha  
Allison at  
[naphysiotherapy@gmail.com](mailto:naphysiotherapy@gmail.com)  
07766500388

**GARDENING SERVICES**

Grass Cutting (free disposal of cuttings)  
Hedge Trimming  
Weed Control  
Lawn Treatment  
Garden Clearance  
General Tidy Ups  
Leaf Clearance  
Internal and External Painting and Decorating  
fence and Shed Painting

Reliable & friendly service  
All of your gardening needs, all year round!  
Discounted regular visits or one-off visits available

**20% OFF**  
Discount on  
fortnightly grass  
cutting services

**M.B GARDEN  
MAINTENANCE**  
213

**PRICES FROM £15**  
Contact me for a free  
estimate!

Call or text **07946554935**

Are you struggling to find the time to get  
everything done?  
Is your life one constant balancing act?  
Why don't you let me lighten the load

Let me be your extra pair of hands,  
helping you create balance in your life



**HANDY LITTLE  
HELPER**

Contact Me:  
Francesca Bradford  
07780614747  
[bradford.handylittlehelper@gmail.com](mailto:bradford.handylittlehelper@gmail.com)  
[www.handylittlehelper.co.uk](http://www.handylittlehelper.co.uk)

**AA**  
ARTHUR FRANCIS  
ACCOUNTANCY

**Our aim?**  
To add value to your business,  
help it grow and reduce stress  
so that you can focus on other  
critical aspects of your business.

Ltd Company Accounts and  
Corporation Tax Returns  
Business Consultancy  
Cash Flow Management  
Bookkeeping

01245 922025  
[info@arthurfrancisaccountancy.co.uk](mailto:info@arthurfrancisaccountancy.co.uk)

*Christopher  
LOCKSMITH*  
THE

**ARE YOUR LOCKS BEHAVING BADLY?**

We Value Old Fashioned Customer Service  
A Local Trusted Family Business Since 1989

- Specialist in UPVC & Wooden Doors
- No Call Out Charge
- No Fix No Fee
- All Work Fully Guaranteed
- 10% Senior Citizen Discount

For More Advice & Help  
Call Christopher:  
**07772 111 222**

[www.christopherthelocksmith.co.uk](http://www.christopherthelocksmith.co.uk)



### Walthambury WI

In May we heard from Nick Wickenden about the history of Wilkins and Tiptree jams. Nick is curator of their museum and very knowledgeable, we even had a small sample! This was followed by our annual meeting. Many members enjoyed an evening meal at the Rose and Crown. It was so successful we are planning another one! A group of 14 did a pleasant walk around Pleshey, followed by coffee at the Leather Bottle. In June we were superbly entertained by the Silver Darlings, an all-female group singing sea shanties! We admired their fantastic voices and harmonies and even sang along. Next month is our garden meeting for members only at Blackchapel.



## RHP (Chelmsford) BOWLS CLUB

**Give Bowls a Go for Free**

Come Along any Friday  
17th May- 16th August at 18:00  
(Coaching & Equipment provided)

Visit: [rhpscc.co.uk](http://rhpscc.co.uk) or Contact: Ian on 07840347901

Spacious Clubhouse  
Ample Free Parking  
Discounted joining fee  
Friendly Club

### Great Waltham Parish Productions (GWPP) Cabaret

The show sold out on the night and the audience were treated to an evening of song, dance, comedy and dancing to The 60s Revival Band. The evening was compered by Mike, who filled in the gaps between acts with lots of useless information and appalling jokes! We experienced the dancing of the Divas, songs from Tom and Rachel, and Lauren and Ellie, and Jack, the classic toilet sketch from David, Mike and Colin, singing and dancing from Amber and the evening was rounded off by the band.

GWPP stage two or three productions every year in the village of Great Waltham. Typically these include variety shows, pantomimes, and this year will include a serious historical drama – “The Wicked Vicar of Waltham”. Everything from scripts and scenery to singing, dancing, acting and fooling around is delivered by our members. Membership is open to anyone who wants to take part in our shows, whether on stage or behind the scenes, at the door or behind the bar or helping in any one of the many unseen but essential ways.

The next production is “The Wicked Vicar of Waltham” on 22nd and 23rd November 2024. This will tell the tragic story of the eccentric GW Reverend George Somers Clarke, who ended up in Chelmsford Gao! We are collecting names for taking part, so if you are interested, email [mike.2.steel@btinternet.com](mailto:mike.2.steel@btinternet.com)



Top left: Divas;

Top Middle: Tom & Rachel

Top Right: Mike

Bottom left The Band

Bottom Right Amber

## Extension to National Grid Pylons Consultation deadline

Is there anyone in the Great Waltham parish who isn't aware of National Grid's (NG) proposal to route 400KV Overhead Lines (OHL) through our parish?

Have you commented on the consultation which is due to close 26th July? (only 0.1% of the population of Essex/Suffolk/Norfolk commented on the previous 2 non-mandatory consultations!)

Let's make sure the mandatory consultation gets many more responses. Essex County Council, Chelmsford City Council, and the Parish Council, have all objected!

In terms of our parish of Great Waltham, the "pinch point" between Great and Little Waltham, brings the pylons closer to housing and heritage sites than any other area. We know that the 2nd consultation in 2023 raised concerns with NG and that they admitted that "there is the potential for likely significant intra-project cumulative effects on Great Waltham and Little Waltham resulting from combined landscape and visual historic environment effects during construction and operation."

In other words, the issue of the Waltham pinch point is climbing towards a point where NG may have to consider that it is undeliverable in its current format.

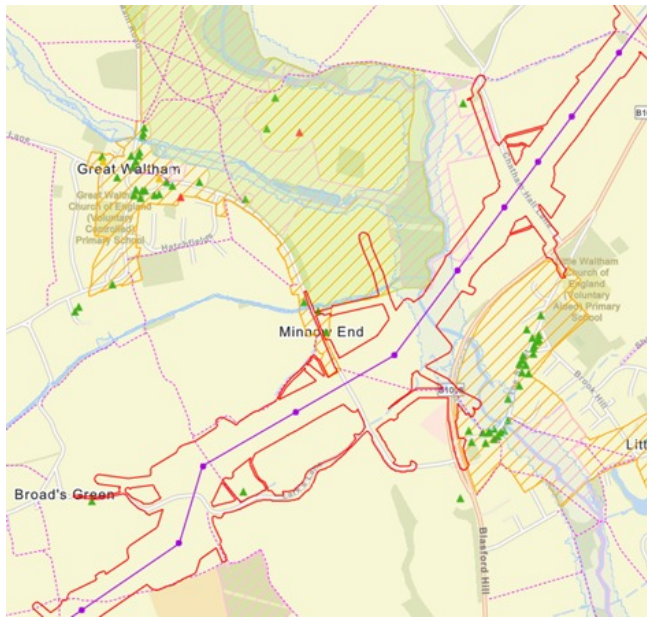
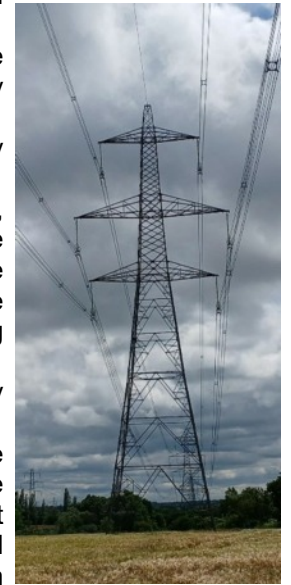
We need to add to that cumulative position by even more objections. These need to include

concerns around heritage assets (like Langley's park and the ancient monuments), listed buildings and assets (like the pill boxes), impacts on businesses, homes, tourism – basically anything that raises the unacceptability of the Waltham pinch point route.

There is a danger that those who are not close to the route may think that the pylons are acceptable and "not near me, so okay"! But I can guarantee that once they start to go up, there will be an outrage from residents wider afield, who will regret not commenting when they could.

I have included a photo taken from Boreham of their 400KV route. When you walk down Chelmsford Road between Great and little Waltham, and look left and right, this is the sort of picture you will see!

To comment on the proposals, search for National Grid Norwich to Tilbury and click the link to Public Consultation then scroll down to the feedback questionnaire link. Alternatively, you can email [contact@n-t.nationalgrid.com](mailto:contact@n-t.nationalgrid.com) Those without internet can send comments by post without needing a stamp to FREEPOST N TO T



Also, take a look at NG's interactive map to see how it directly affects you.

County Cllr Mike Steel

## Great Waltham Festival of Choirs

Great Waltham Village Choir held their first Festival of Choirs on Friday 7th June in Great Waltham Church and what a huge success it turned out to be. The aim of the festival was to bring choirs of all ages together in order to celebrate the joy of singing and to listen to each other perform. Six choirs from the district took part in the festival including Great Waltham primary School, Chelmsford Male Voice Choir, Chelmer Valley



High School, Dunmow Community Choir, The Sandon School and the Village Choir. The church was full with 120 singers and as many audience members. Each choir sang for fifteen minutes and then joined together as one mighty choir for a grand finale. The undoubted showstopper of the evening was the Great Waltham Primary School choir whose performance of their three songs was rewarded by prolonged applause and cheering from the audience. The festival turned out to be a most enjoyable and rewarding evening for the choirs involved and the audience whose departing words were 'will you be doing it again next year?'



## Great Waltham Parish Council

Clerk, W Adshead-Grant, The Pavilion, Great Waltham Recreation Ground, South Street, Great Waltham, CM2 1DF. Tel: 07880 717329.  
email: [clerk@greatwalthamparishcouncil.co.uk](mailto:clerk@greatwalthamparishcouncil.co.uk)

### VACANCY FOR ONE COUNCILOR

1. There is a vacancy on Great Waltham Parish Council created by a resignation.
2. Under S21(2)(a) of the Representation of the People Act 1983. The Parish Council will co-opt 1 councilor to fill the vacancy
3. Persons wishing to make an expression of interest for the vacancies should contact the Clerk to the Parish Council at The Parish Office, The Pavilion, South Street, Great Waltham CM3 1DF.
4. The Clerk can be contacted on at the address above or by email :

[clerk@greatwalthamparishcouncil.co.uk](mailto:clerk@greatwalthamparishcouncil.co.uk)

### D Day Service

The Parish News would like to apologise for any confusion cause by the incorrect month on the front page for the D Day Service.

### HELP NEEDED IN FORD END CHURCH YARD AND VILLAGE SIGN VERGE

Thank you to David Tyler and Roger Bearman who do the major part of the work in Ford End Church Yard but they need some help please with this and we need help to keep the Village Sign verge tidy.



Does anyone have an hour or two to spare from time to time to help keep this beautiful part of our village cut and strimmed ?

You could be designated a little area just for you or help generally from time to time.

If you would like to find out more please contact Roger on 07740 880247 Or myself Sheila 07977 077045 Thank you.

This is a summary of some items discussed at the AGM and May monthly meeting of the Parish Council. For more details, see the full and approved minutes of all Council meetings, available on our noticeboards and the parish website ([e-voice.org.uk/greatwalthamparish](http://e-voice.org.uk/greatwalthamparish)).

We elected our officers for the next 12 months and completed the various governance protocols necessary to continue our work. We currently have one vacancy on the Council which we hope to fill through the co-option process. We decided to bring forward the starting times for our future monthly and committee meetings to 7.00pm.

We agreed our response to Chelmsford City Council's Local Plan consultation. The Plan's proposals include two potential development sites for our parish, both in Ford End. We resolved to oppose any development in Back Lane (site 14a in the Plan), but to support the site south of the school (14b) if benefits for the community of Ford End include better traffic control and safety on the main road.

We discussed our response to National Grid's (NG) statutory consultation with its proposals for an overhead transmission line route serviced by pylons. Our detailed submission will be posted on the parish website (together with notes and slides from the community meeting held on 30<sup>th</sup> May). We will say, *inter alia*, that NG has failed to take previous objections raised during previous non-statutory consultations properly into account; that we prefer an offshore route, or failing that one which utilises HVDC undergrounding technology; and we strongly oppose the use of pylons anywhere in the parish, not just the proposed route.

We agreed to respond to the Stansted Night Flights consultation by indicating a preference for the third of the options offered (no changes to current night flights volumes), with further comments including that the night flight exclusion period should be altered from 23:30 – 06:00 to 23:00 – 07:00.

We also resolved to take forward recommendations from our Great Waltham Recreation Ground Play Area working group which allows it to move to the next stage and to work on a user consultation, identify grant funding opportunities and specify public tender design requirements. These steps are underpinned by the agreed principle that we will need to replace much of the wooden equipment which has done sterling service but is now showing its age.

The next monthly meeting will be on Monday 15<sup>th</sup> July at the Pavilion, Great Waltham Recreation Ground, starting at 7.00pm. As always, all parishioners are welcome to attend our public meetings. Steve Gilbert, Chair

### Ford End Senior Tea

The next meeting of the Ford End Senior Tea will be on Monday 8<sup>th</sup> July at Woodstock, Church Lane, Ford End. Please note the new summer time of 2.30pm

Anyone interested or has not been before please ring Sheila Bearman on 01245 237335 or 07977 077945



### Waltham Wanderers

The next walks are planned for Sunday 14<sup>th</sup> July and Sunday 18<sup>th</sup> August.

All are welcome, no fee and enjoy walking about 5 or so miles. If you're interested in joining us, contact Clare Lyne at [clare.lyne11@googlemail.com](mailto:clare.lyne11@googlemail.com)



Thank you for all of the contributions to this edition of Great Waltham Parish News. Please send your contributions for the next issue, together with any enquiries or advertising requests, by e-mail to: [gwparishnews@gmail.com](mailto:gwparishnews@gmail.com).

**The last date for inclusion in the August issue is July 19<sup>th</sup>**