

Parish News

Great Waltham Ford End Howe Street Littley Green North End

May 2024

North End Spring Litterpick

This year, the spring litter pick had to be delayed due to the incessant rain. Fortunately, the weather remained fine on the 6th of April, so the usual band of Northenders scoured the lanes for discarded rubbish. Our collection seemed smaller than usual, with none of the 'interesting' items from previous litter picks. This paucity of litter may be due to the vegetation having grown well above 'thrown can' height plus Mill Road being flooded at Absol bridge for much of the winter, reducing the through traffic. However, we did our best and afterwards met up at the McRae's for very welcome refreshments. Many thanks to everyone who took part and especially Colin and Lesley McRae.



Youth Cricket at Great Waltham CC in 2024

Weekly outdoor training sessions starting Monday 22nd April:

- 6-7pm for ages 7-11
- 7-8pm for ages 12-15
- Multiple ECB qualified coaches
- All abilities welcome

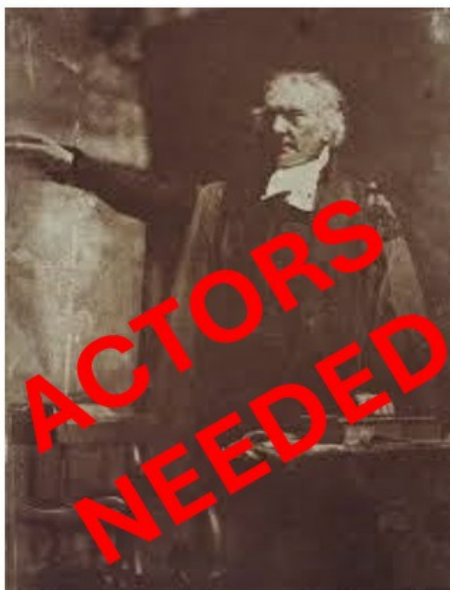
Matches against other clubs:

- Hard ball games for U11, U13 & U15 age groups
- Soft ball games for U9 age group
- Protective equipment provided

ECB National Programs starting Wednesday 15th May at 5:30-6:30pm.

- All Stars for ages 5-8
- Sign up with Great Waltham at www.ecb.clubspark.co.uk

Any Questions? Contact us at gwcc.enquiries@gmail.com



The team that brought you the "Waltham Witch" presents the true story of **"The Wicked Vicar of Waltham"**

Great Waltham Parish Productions (GWPP) will present this true story at the Village Hall on **22nd & 23rd November**.

The eccentric **Reverend George Somers Clarke** was denounced by his own father as 'cruel, wicked and undeserving of a curacy'. His life was a series of bizarre confrontations with college, Church, family, Great Waltham residents and the Six Bells Inn, leading to tragedy and thirteen years' incarceration in Chelmsford Gaol, where he died in 1837.

Call for actors! - GWPP is looking for actors to play:

- the Vicar (middle aged and elderly)
- his wife and daughter
- local people including women of ill repute, and maids
- members of Trinity College
- the Church
- legal profession, and local constabulary.

We also need people who can help with lighting, sound, scenery, backstage and front of house - an opportunity to experience the thrills, camaraderie and satisfaction of being part of a team which entertains and raises money for good causes. If you are interested, contact Mike at mike.2.steel@btinternet.com or Sarah at sarahjrads@gmail.com

From the Vicarage

I was thinking about a theme for this month's church piece in the Parish News when I met a young person who lives in the Parish. She told me how difficult the past few weeks had been for her and her family. Their car broke down on the A12. It turned out to be very expensive to repair. A replacement vehicle was acquired only to be hit by another car within days and it too is off the road. On top of this, a family member is very unwell. I sympathized and said how stressful all this must be for her. Her reply really caught me off guard. She said " Roger, I don't see it as stress. I treat it as a test of my strength."

This encounter made me think about how the disciples must have felt in the following weeks after Easter. They must have been very stressed and frightened, not knowing what to do, who to trust, perhaps thinking that they will end up being put to death in the same way as Jesus. But then Jesus reappears on several occasions prior to the Ascension to comfort and encourage the disciples to be strong in their faith in Christ. Gradually the stress the disciples felt falls away and they gain the strength which helped them go out into countries far and wide to spread the Gospel.

In today's context when things go wrong in our lives, this is when we need put our faith in someone and talk, perhaps to a friend, a family member or maybe our Priest. Sometimes when we lock up the Church in Ford End at the end of the day there is someone, a passerby, sitting in the pews. They just need to quietly talk to us, a stranger, or perhaps to God, a friend.

God Bless

Roger Bearman

Reverend Dan still away from the Parish. He will be back sometime in May.

Church of England Services in May 2024

Sunday 5th 11am Communion Great Waltham
Sunday 12th 10.00am Communion Ford End
Sunday 19th 11.00am Communion Chignals
11.00am Service tba Great Waltham
Saturday 26th 10.00am Family Worship Ford End

Contact: Alison Bates Parish Administrator

Tel: 07957 228467

admin@littleandgreat.org.uk

Little Waltham United Reformed Church Services for May, 2024

First three services begin at 10.30a.m.

Sunday 5th - Ian Chamberlain
Sunday 12th - Rev. Geoffrey Griggs
Sunday 19th - Marina Price

The service on the 26th will be at 5pm (this is due to roads being closed for cycle race)

Sunday 26th - Rev. Hans Stein. - Holy Communion

Other Events

2nd May - Coffee/Tea and Cake - 10 a.m. until 12 noon
18th May - Coffee morning - 10 until 11a.m.

Services at Blackchapel, North End April 2024

Sunday 5th Family service at 3pm
Sunday 19th Family service at 3pm



Reminder that RideLondon-Essex, will come through the Great Waltham parish on Sunday 26 May 2024. The route is the same as the past two editions of the event, and enters our area north of

Howe Street and exits on the A414 around Roxwell and Highwood, having gone through Great Waltham, Chignal Smealey, and Writtle. For more information on routes, road closures, timings, how to get involved, and more, visit ridelondon.co.uk/community-in



Coffee Morning Blackchapel North End

Come and join your neighbours for a coffee and chat for just £1.



Last Wednesday in the month
10.30 - 12.00

50th ART SHOW

GREAT
WALTHAM CHURCH

4th MAY and

5th MAY

Saturday 4th May – 12.30pm – 4.30 pm

Sunday 5th May – 12.30pm – 4.30 pm

Admission £1 - Refreshments

Cash/Cheque only event

Little Waltham Gardening Club

The Club held its annual Spring Show on April 6th. It was well attended and the plant stall was very popular.

The next meeting will be on Wednesday May 1st when Dr. Richard Rolfe will be giving a talk on Cacti and Succulents., 7.30 pm at Little Waltham Memorial Hall. All welcome. See our web page: [Little Waltham Gardening Club](#).

Great Waltham Festival of Choirs 2024

Great Waltham Village Choir are hosting their inaugural Festival of Choirs in Great Waltham Church on June 7th 2024 at 6pm

We have six choirs participating in what we hope will become an annual event in Great Waltham. The Village Choir will be hosting and taking part in the event along with the following choirs from the Chelmsford area: Great Waltham Primary School, Chelmer Valley High School, Chelmsford Male Voice Choir, Dunmow Community Choir, The Sandon School Choir and their Elite Singers. Each choir will sing two songs of their own choosing and will join together in a grand finale to sing an item together.

This should not be an occasion to miss. There will be an interval and bar available and tickets will be on sale from Walthambury Stores and Malcolm Ward 01245360149.

PARISH ANNUAL ASSEMBLY 2024

The Great Waltham Parish Annual Assembly will be held on Tuesday 7th May 2024 at Great Waltham Village Hall commencing at 8.00pm.

Come along and interact with the various Parish organisations that are represented at the assembly.

This is an open meeting for all residents of the parish.

The Agenda and previous minutes will be displayed on the Parish Noticeboards in May

Will Adshead-Grant

Clerk to the Parish Council

GREAT WALTHAM FRIENDSHIP CLUB

The annual AGM took place on Monday 15th in the Legion Hall and was well attended. All members renewed their memberships and a new and exciting programme was introduced. The Club is doing very well with several new members who are looking forward to next month when Michelle will be introducing many of us to Yoga.

Great Waltham Parish Community Care Group

The aim of the group is to provide short term and ongoing help to meet the needs of elderly local residents for whom there is no statutory provision. Predominately this will involve providing transport to doctor or hospital appointments.

If you require the services of the group, please call our co-ordinators who are Gill Mitchell 01245 362215

Wendy Proctor Tel. 01245 360483 John Lattimore, Chairman
Tel. 01245 363818

Great Waltham Horticultural Society
Annual Show

Photographic Classes 2024

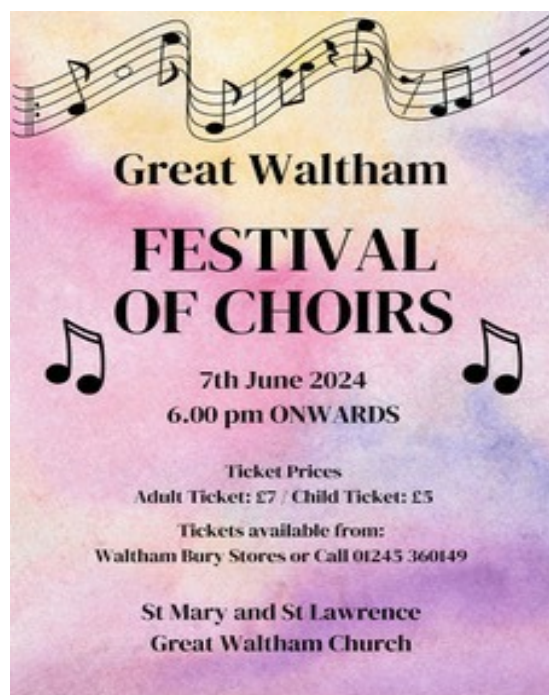
Calling all amateur photographers

Adults classes

- 1 Open, black and white: any topic
- 2 Colour, Subject 'Architecture'
- 3 Colour, Subject 'Rural Crafts'
- 4 Colour, Subject 'Sports'
- 5 Colour Subject 'Fruit & Veg'

Childrens class

'Something I love'



Great Waltham
Horticultural Society's Annual

PLANT SALE

SAT 11TH MAY | 10:00 - 12:00
GREAT WALTHAM VILLAGE HALL

BRIGHTEN UP YOUR GARDEN THIS SUMMER

PLANT DONATIONS WELCOME,
PLEASE DROP OFF PLANTS AT 930AM
Cash or BACS



Parish Directory

To advertise in the Parish News, please contact us by email on gwparishnews@gmail.com

If it needs **PRINTING**
from Stationery & Leaflets to a Bespoke Glossy Brochure
GIVE US A CALL
Fast • Efficient • to Budget



T: 01787 479479
E: info@fmlitho.co.uk
W: www.fmlitho.co.uk



ARBORICULTURAL SERVICES
GROUNDS MAINTENANCE

01245 408777
www.jcm-services.co.uk
james@jcm-services.co.uk

Visit our website for more info



Structural Steelwork, Steel Fabrication, Gates, Railings and anything for the garden

Tel: 01245 237233
enquiries@plesheyforge.co.uk

Unit 20, Warners Farm, Main Road, Howe Street Chelmsford CM3 1BL
www.plesheyforge.co.uk

The Rose & Crown
between Little Waltham and Great Waltham



A Great Little Pub and Restaurant with good food, and a warm and friendly atmosphere

Open All Day

Ben and his staff will be delighted to welcome you. If you want to ensure a table is available

Telephone 01245 360359
www.roseandcrowngreatwaltham.co.uk

Wood Automotive

MOT's, Vehicle Servicing
Tyres, Vehicle Diagnostics
Air Conditioning Repair
Clutches, Welding
Free Local Collection

"We look forward to seeing you and your car"
Neil and Sarah

Unit 1 Walthambury Farm
Pleshey Road, Great Waltham
CM3 1AZ

www.woodautomotive.co.uk
01245 361180



Willsher and Son Electrical Contractors

- All work insured and certificates issued where applicable
- No job too small, free estimates
- Based in Great Waltham
- Reliable family business

07970 759565
info@willsherandson.co.uk
www.willsherandson.co.uk
or find us on Facebook

Electrical Safety Register
EASA ECA

Chelmsford Plumbing & Heating

Trustworthy family run business
All calls answered personally
Confirmed bookings given

- *Boiler services, breakdowns, repairs
- *New boilers and heating systems
- *Plumbing repairs
- *Gas, Oil, LPG and Electrical work

No job too small
Work covered by 12-month guarantee

01245 478588

Email: sales@chelmsfordplumbingandheating.co.uk



Free Quotes

EVERETT PAINTING

- INTERIOR & EXTERIOR
- WALLPAPERING
- EST OVER 20 YRS
- FULLY INSURED
- ONLINE PORTFOLIO

TEL 07595 534872
www.everettpainting.biz




Village Roofing Ltd

- New Roofs, repairs and general maintenance.
- 24 hour emergency call out.
- Chimneys and Lead work
- Blocked guttering & drains.

01245 843169
07946 242636
email: info@villageroofing.co.uk

City Guilds Checka trade

Old Park Meadow Natural Burial Ground




We offer burials and ash interments, funerals, services and wakes.

Adaptable to any ceremony and a completely personalised service.

Reserving a plot in advance is also possible.

01245 806332 oldparkmeadow.co.uk
Coppice Lane, North End, Between Chelmsford & Great Dunmow, Essex, CM6 3PL

YOUR LOCAL COUNTRY STORE



ernest DOE power
where you can buy with confidence

FYFIELD, ONGAR CM5 0NS
TEL: 01277 899464

Jayne's Upholstery Classes Ltd



10 week termly upholstery classes held at Little Waltham and Great Totham

For more information contact Jayne on 07881816889 or email jayne.interiors@googlemail.com

A & W Gowers LTD
Specialist Joinery Manufacturers

A local family run company with many years of experience providing bespoke joinery to trade and private customers.

Conservation, Restoration, Ordinary or Contemporary, we can manufacture and install all types of work.

Windows	Fitted Furniture
Doors	Kitchens
Conservation	Wardrobes
Gates	Bookcases
Stairs	...and much more

For free friendly advice and estimates please contact us at www.awgowers.co.uk
Howe Street, Great Waltham, Chelmsford
Telephone: 01245 362737
Now selling eco-friendly stove briquettes

AD FUEL OILS LTD.
Your local answer!

NOW SELLING LPG AND AdBlue



Commercial and general public welcome with easy access for all cars and vans

Yard sales from A D Fuel Oils Ltd
Banters Lane, Great Leighs, Nr. Chelmsford, Essex CM3 1QX
Opening Hours: Monday-Friday: 8am - 5pm
Saturday: 8am - 1pm
01245 362616 • www.adfuelfuels.co.uk

Products available for collection or delivery:

• Petrol	• Paraffin	• Barrel dispensers
• Diesel	• AdBlue	• Rotary pumps
• Kerosene	• LPG	• Boiler additive
• Gas Oil/Rod Diesel	• 20L containers	(Additive for Age's)
• PBO	• 205L containers	

Walthambury Stores
Great Waltham, Essex



Post Office opening times
Monday to Friday 9am to 5.30pm
(open lunch hours)
Saturday 9am to 12.30pm

When visiting the Post Office, why not use the shop? You will find -

Groceries, Fresh Produce, Sausages & Bacon, Newsagent, Stationery, Dry cleaning, Delicatessen, Frozen Food, Greeting Cards, Photocopying, National Lottery, Car Tax

Barrack Lane, Great Waltham Telephone: 01245 360278

Great Waltham Parish Council – Annual Report 2023/24

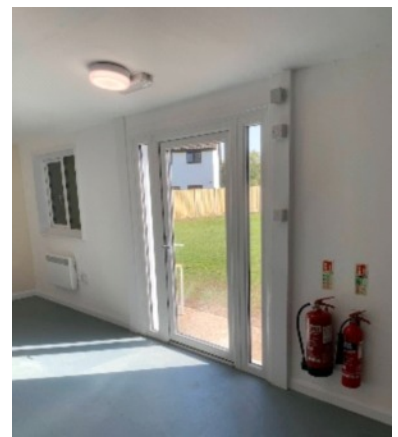
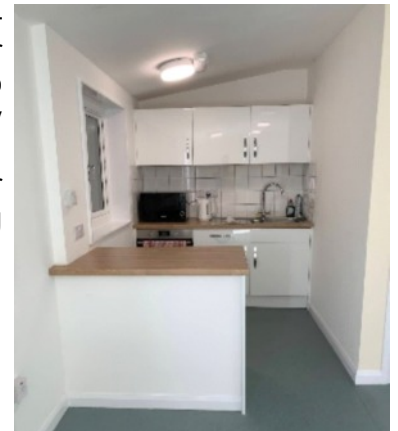
The parish elected a new council in May 2023. In practice, like many parishes in Essex, no vote actually took place as the number of candidates fell below the positions available. However, we subsequently attained a full complement of eleven councillors with three new, co-opted members.

In November the Council achieved Foundation status under the Local Council Award Scheme. This award is for councils who meet a set of minimum standards to deliver effectively for their communities. Much of the evidence needed to achieve the award is delivered by having in place policies and processes which provide full details and transparency on the Council's work and its obligations and responsibilities – see the parish website (<https://e-voice.org.uk/greatwalthamparish/>) for details of all Council policies and its activities. During the year we invested in new computer software which will further improve our administrative processes.



An important issue identified during the year has been the need to more actively recognise and address both the condition and potential of the Council's assets. Unlike many parish councils we do not have a village hall to consider, but there are three recreation grounds and other responsibilities, such as the upkeep and condition of the village's war memorials. In relation to recreation grounds, at Ford End we installed an all-weather path around part of the perimeter to provide year-round access to the picnic bench area – we hope to complete the path and install a multi-use games area when funds allow.

At Great Waltham recreation ground we continued to make improvements – we installed a small container to make sure maintenance equipment is closer to where it is typically needed and also made further small enhancements to the Pavilion, which has now become a significant community asset, not only being available for hire (residents enjoy discounted rates), but also in reducing the Council's own costs as it has become the main venue for our meetings. Our hirers' activities cover a diverse range of interests, including bridge, art, fitness and a toddlers' group.





The new multi-play units previously installed at the Ford End and Howe Street recreation grounds are very popular, but much of the wooden equipment at Great Waltham has deteriorated and some items have had to be partly decommissioned. We are in the early stages of what is likely to become a significant project as we look to renew a number of the units at the site – our preliminary work has included identifying potential suppliers and play equipment options. We hope to share more information soon and will welcome feedback and comments once plans have been further developed.

In August, we again hosted a successful Play in the Park event at the Great Waltham recreation ground and we will run a similar one again this year. We have committed ourselves to a policy of continual improvement at the recreation grounds; for instance, we have commenced work to refurbish (and replace as necessary) the goalposts at all locations and will be adding or replacing seats.



Elsewhere, having obtained confirmation of what we are permitted to do and consulted on the intended work, we will commence renovations this year on the war memorial at Banbury Square, Great Waltham. To offer an insight on how our memorial could look after the work is completed the photo (right) is the recently refurbished war memorial at Sible Hedingham which is made of similar stone. And of course we have continued to maintain and manage our other assets, including our allotment gardens, areas such as the green areas at Broad's Green and North End, and the various bus shelters and litter and dog waste bins for which we are responsible. At both allotment gardens there are currently vacant plots, so if you are keen to 'grow your own', please contact the Parish Clerk to discuss hiring options.

A real success in 2023/24 has been our work getting involved with the provision and upkeep of defibrillator units at various locations throughout the parish. We have entered an arrangement with The Community Heartbeat Trust to make sure the units we purchase and manage are both the latest versions and always available for use. We are only able to do this with the help of teams of volunteer testers – we thank them for their time and commitment in maintaining this important service. The next stage of our plan is to install a further unit at Broad's Green.



One of our roles is to act as a consultee for planning applications made in relation to developments in the parish. Although we have no direct decision-making or enforcement powers, we do make comments on all substantial works. Typically these are reviewed at our monthly meetings, and in the year to date since May 2023 we have considered and made comments on 29 applications, raised no objections on 27, objected to 1, and offered comments of concern on another.



A particular potential planning issue which we considered a number of times during the year is the proposed National Grid (NG) pylon transmission line project where we submitted our comments to the second informal consultation. We again made forceful representations in opposition to the scheme (our responses to this and the first informal consultation are on the parish website). We anticipate the need for further detailed assessment when NG's formal consultation is issued and technical reports on the viability and costs of alternative route options are published.



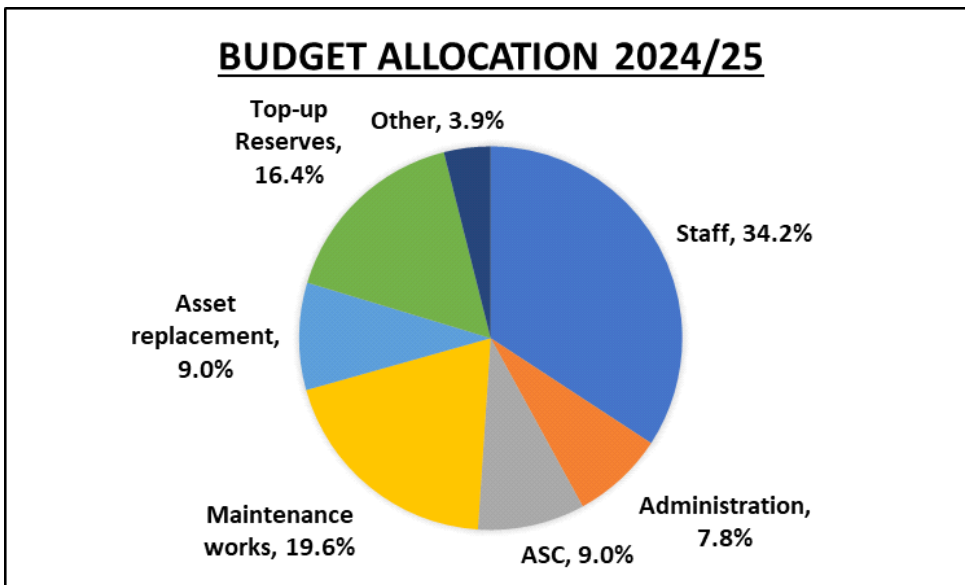
There have been two particular matters to report which are less positive. First, we experienced incidents of vandalism and anti-social behaviour at the recreation ground at Great Waltham and elsewhere. We have to repair and replace damaged assets – the costs incurred come ultimately from everyone’s Council Tax bills. We are also very cognisant that we are not the only ones in the parish who suffer, and in an effort to obtain closer engagement with the police we asked the Chelmsford & Maldon Community Policing Team to attend our meetings. The first visit took place in February, and while simply establishing a dialogue will not of itself change offenders’ behaviours,

it is hoped that closer liaison with the police will help us secure their advice on crime prevention best practices which we can pass on to parish residents and businesses. If you are a victim of crime, please make sure you always report the incident to the police online or by calling 101, unless of course it is an emergency when you should dial 999.



The second matter is the Ford End average speed camera (ASC) scheme. In 2023/24 we made significant progress when we committed ourselves to seeking a loan which would finance our share of the scheme and we consulted with parishioners on whether they were willing to bear a Council Tax increase for five years to service the loan (66% of respondents said they would). Initially, things were easier for us when we received a generous offer of an interest-free loan from a parishioner – this would have saved approximately £8,500 in commercial interest charges over the five-year loan period.

Although we were always aware that the cost of the scheme would have risen from the last costing exercise in 2021, the whole enterprise was thrown up in the air when Essex County Council (ECC) Highways (the partner who was to consider match funding) indicated a doubling of the scheme’s costs to c.£240,000, albeit we did not receive details of why this should be so. However, this aspect itself became academic when the ECC cabinet member responsible stated he had *“to look at the data led statistics, and as discussed, this location does not meet the criteria on either casualty and speed basis, and so we are unable to progress such a request [to consider match funding an ASC scheme]”*. The upshot is that having made the case as forcefully as possible for so long, even if match funding from ECC were available (which we currently also understand is not the case), the scheme would not now be permitted, even though in the past the overruling of policy advice had been indicated by two previous cabinet members.



Underpinning all we have done and intend to do going forward is our own financial stability. We have set our budget for 2024/25 at £110,627, with an agreed precept demand (the amount used in Council Tax calculations) at £104,005. The precept demand is the budget amount less income to the Council, and overall that for 2024/25 translates into a 22.1% increase over 2023/24, as you will have seen from the breakdown in your Council Tax bill.

The impact of this decision will need to be considered when we come to set the 2025/26 budget later this year.

The key drivers for the increase are the effects of inflation; the need for sharper focus on allocating and maintaining adequate reserves; and the costs associated with the repair and maintenance of assets, a number of which are now showing their age. The chart shows the allocation of the 2024/25 budget. ('ASC' is the provision we made for the first instalment to service the loan for the Ford End average speed camera scheme – when the budget was set and the precept demand had to be made the scheme was still very much in the offing, but as described above without ECC support we are now unable to proceed as planned.

In the coming year we will remain focussed on delivering all we can for the parish with the resources and funds available to us. We are aware some authorities are struggling to sustain the level of their services, but for our part we will do everything possible to ensure we continue to maintain not only the existing amenities which come within our remit, but also new ones to enhance our community.

Your Council always welcomes your interest and involvement in its activities. This can range from you coming along to our meetings where you can raise issues or concerns and hear our discussions, to volunteering your time/expertise to help us achieve our goals. The parish website provides useful information on current issues and likely future projects. If you need any further information and advice you can contact the Parish Clerk or any of your councillors, details below and available at:

<https://e-voice.org.uk/greatwalthamparish/>

CONTACT DETAILS

These are the contact details for the Parish Clerk Clerk, W Adshead-Grant, Great Waltham Village Hall, South Street, Great Waltham, Essex CM3 1DF Tel 07880 717329 clerk@greatwalthamparishcouncil.co.uk

Your Parish Councillors

Contact	Email	Telephone No.
Cllr. Steve Gilbert (Chair)	stevewgilbert59@gmail.com	07767 362673
Cllr. Alan Martin (Vice Chair)	alanmartinpc@gmail.com	07917 037570
Cllr. Matthew Bradley	matthew.bradley12@outlook.com	07596 117417
Cllr. Peter Jackson	vandp@btinternet.com	01245 360067
Cllr. Jim Jenkins	j.jenkins606@btinternet.com	01245 362003
Cllr. Alex McDevitt	parish@mcdevitt.myzen.co.uk	01371 820139
Cllr. Oliver Micklem	omicklempc@gmail.com	07791 118853
Cllr. Jo Palmer	cllrjop@gmail.com	07713 419175
Cllr. Mike Steel	mike.2.steel@btinternet.com	01245 360918
Cllr. Roger Stephenson	gwpc.rs@gmail.com	07803 140260

Or you can write to us at:

Great Waltham Parish Council,
Parish Office,
The Pavilion,
Great Waltham Recreation Ground,
South Street,
Great Waltham, Chelmsford, Essex, CM3 1DF

Your Chelmsford City Council Councillors are:

Cllr. Nicola Bugbee	nicola.bugbee@chelmsford.gov.uk	01245 605896
Cllr. Mike Steel	mike.steel@chelmsford.gov.uk	01245 360918 or 01245 605913
Cllr. Philip Wilson	philip.wilson@chelmsford.gov.uk	07748 624093 or 01245 605926

Your Essex County Council Councillor is:

Cllr. Mike Steel	cllr.mike.steel@essex.gov.uk	01245 360918
------------------	--	--------------

GREEN MAN
MAY BANK HOLIDAY
MONDAY CELEBRATIONS



OPEN: 11 AM - 7 PM
LIVE MUSIC, BBQ & GARDEN BAR.
ALFRESCO DINING.
KIDS ENTERTAINMENT AND MORE!

WWW.GALVINRESTAURANTS.COM
MAIN RD, HOWE STREET, GREAT WALTHAM,
CHELMSFORD CM3 1BG.

BOWMAN
BESPOKE

Specialists in media units, fitted wardrobes and built in cabinetry.
Beautiful fitted furniture with a personable approach.

www.bowmanbespokeltd.co.uk
Phone: 07984947531
Email: dean@bowmanbespokeltd.co.uk
Unit 3 Walthambury Farm, Pleshey Road, Great Waltham


ALL ABOUT GARDENS

Garden Maintenance & Clearance
Tree Surgery & Removal
Hard Landscaping



Robert - 07879 003135

WILD AND ROOTED
FARMING



Exclusively grass-fed Aberdeen Angus beef.
Sustainably reared in Gt Waltham

FROM FARM TO PLATE
WILDANDROOTEDFARMING.CO.UK

TMFIT

SPECIAL OFFERS

5 X ONE-TO-ONE TRAINING £150

FREE GROUP TASTER SESSION

tmfit.co.uk
07947 427 489

TIMBER ASPECTS CONSTRUCTION
"Building on Reputation"
Est. 1997

All Aspects of Carpentry and Building

Listed building works
Extensions Bathrooms
Kitchens Plastering
Cladding Maintenance
Mini digger and dumper hire with driver
Registered waste carrier and dealer

Call Tim 07770 877669
A Gt. Waltham based business

Petz & Potz

Happy cat; happy home



Local lady pet owner and horticulturist will look after your pets or plants while you are away (short or long term).
Ensuring that your pets are happy & cared for in their own surroundings.



07880 700382

Barefoot Healing

Ford End
Chelmsford
07957985192



Treatments available
Reflexology
Hopi Ear Candling
Mian Dui Facial Ritual
Hand reflexology

Late evening appointments

Thinking of an extension or conversion?
Planning a home refurbishment?




All domestic & commercial work undertaken
Whatever your building requirements, we can help

To find out more call 07762 811549
or email dtbuilders21@gmail.com
Based in Great Waltham



SBC Building Services



General Building Works
Extensions
Construction works
Ensuring compliance with building codes and regulations.
Free Quotations
Contact Steve Hayward
07947544129.
sbcbuildingservices41@gmail.com

Natasha Allison Physiotherapy

Womens' Health Physiotherapy

- All obstetric & gynaecology issues
- Scar treatment (following C-section, perineal tear, episiotomy or gynaecology surgery)
- Antenatal physiotherapy
- Postnatal physiotherapy
- Pelvic floor dysfunction
- Mummy MDT

Musculoskeletal Physiotherapy

- Sports injuries
- Post-orthopaedic surgery
- Chronic pain

Appointments available at The Nesting Place & in Great Waltham

To enquire please contact Natasha Allison at naphysiotherapy@gmail.com
07766500388

GARDENING SERVICES

Grass Cutting (free disposal of cuttings)
Hedge Trimming
Weed Control
Lawn Treatment
Garden Clearance
General Tidy Ups
Leaf Clearance
Internal and External Painting and Decorating
fence and Shed Painting

Reliable & friendly service
All of your gardening needs, all year round!
Discounted regular visits or one-off visits available

20% OFF
Discount on fortnightly grass cutting services


M.B GARDEN MAINTENANCE

PRICES FROM £15
Contact me for a free estimate!

Call or text 07946554935

Are you struggling to find the time to get everything done?
Is your life one constant balancing act?
Why don't you let me lighten the load

Let me be your extra pair of hands, helping you create balance in your life



HANDY LITTLE HELPER

Contact Me:
Francesca Bradford
07780614747
fradford.handylittlehelper@gmail.com
www.handylittlehelper.co.uk

ARTHUR FRANCIS ACCOUNTANCY

Our aim?
To add value to your business, help it grow and reduce stress so that you can focus on other critical aspects of your business.

Ltd Company Accounts and Corporation Tax Returns
Business Consultancy
Cash Flow Management
Bookkeeping

01245 922025
info@arthurfrancisaccountancy.co.uk

WALTHAMBUROU WIVES' INSTITUTE (WI)

The WI holds monthly meetings at the British Legion Hall, on the 2nd Tuesday of the month at 7.30pm. We have interesting talks, go on visits/walks etc and lots more but enjoy socialising too! Guests and new members very welcome. Do come and join us.

Contact
walthamburywi@gmail.com



Nicky Stevens M.A.R.

**Mobile & Treatment Room in
Howe St, Chelmsford**

**Reflexology
Reflexology Lymph Drainage
Hand Reflexology
Indian Head Massage**

07882 195476 f

headtosoul2013.wixsite.com/website

**For £5 off your 1st
treatment please quote
GWM5 when booking
Offer ends 30/06/24**



THE HUNDRED PARISHES SOCIETY

www.hundredparishes.org.uk

As day length increases and the air becomes warmer, plants put out new shoots. Many insects emerge and birds pair up, preparing to breed. Since the 1960's the average minimum winter temperatures have been rising. Snow fall is now a rarity, and frosty days are much less frequent.

The current growing season is almost a month longer than 50 years ago. Primroses and bluebells are opening earlier. Researchers recorded that the first flowering of some 406 plant species has advanced by almost a month since 1986! This has a knock-on effect for the time of emergence of pollinating insects such as bees and butterflies; some are adapting to the warmer climate.

A recent planning application to fell an ancient hedgerow oak close to Clavering led to a vigorous and successful campaign by residents to save it. This tree is now registered on the Ancient Tree Inventory, a record similar to the one for listed buildings. There are more trees in local hedgerows that could be recorded - details of how to do this can be found on <https://ati.woodlandtrust.org.uk/how-to-record>.



A Pleshey Hedgerow

National Hedgerow Week organised by the Tree Council runs from 6th May to 12th May and is timed to showcase hedgerows resplendent with fresh new growth and full of wildlife. Please enjoy one or more of the many walks listed on the Society's website - and consider recording some of our wonderful old trees.

Tricia Moxey, Trustee



GREAT WALTHAM PARISH PRODUCTIONS

proudly presents

"CABARET"

An evening of song from 60s Revival Band, dancing and comedy.
Strutt your stuff to the Band!
Bring your own drinks, Ploughman's Supper provided.

Friday 7th June

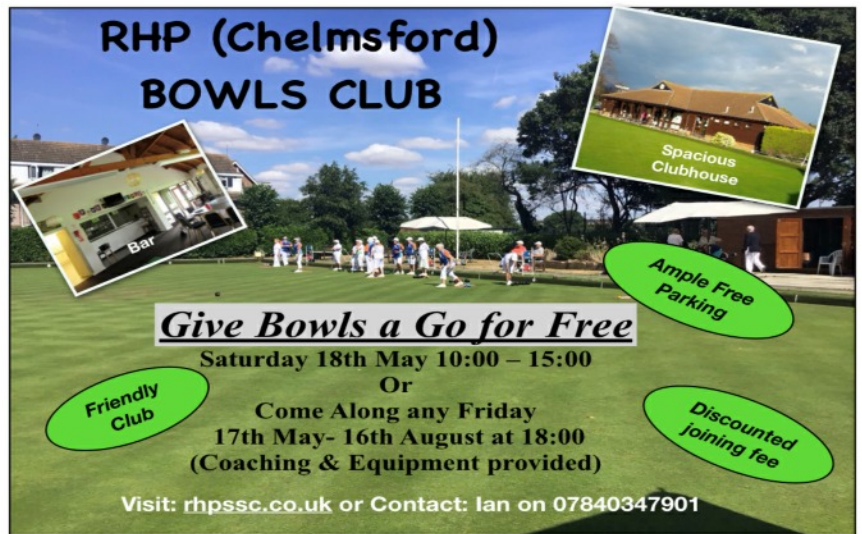
7:30pm at Great Waltham Village Hall

(Not suitable for children)

Tickets - watch the posters nearer the time and check out
the GWPP website

<http://gwpproductions.byethost14.com/?i=1#home>

RHP (Chelmsford) BOWLS CLUB



Give Bowls a Go for Free

Saturday 18th May 10:00 - 15:00

Or

Come Along any Friday

17th May- 16th August at 18:00

(Coaching & Equipment provided)

Visit: rhpsc.co.uk or Contact: Ian on 07840347901

'Ford End Gardening Club - Excursion

At our last meeting in March Simon Tarrant gave us an interesting talk on orchids and we saw many photos of his expeditions to Austria to see them growing in the wild.

The following are reminders with further information on our activities this summer.

On Wednesday 15 May a visit to The Mount garden in Roydon has been arranged. The entry fee is £7 to include tea and cake and the address is Epping Road, Roydon, Harlow CM19 5HT. We are meeting up in the Ford End village car park at 1.30 so we can car share. Please let Val Tyler (tel. 01245 237389) know beforehand if you are joining us so the owners of The Mount have an idea of the size of the group.

Our summer coach outing on Saturday 22 June is to Eltham Palace and Garden and there are a few seats still available. Please contact Enid Adcock on 01245 237522 if you are interested.

On Wednesday 17 July we will be holding our annual barbecue at a local garden and further details will be given out nearer the time.

Why not come along and join us at these events as we would be pleased to see you

Ford End Gardening Club Plant Sale and Coffee Morning



from 10.0am on
Saturday 4th May
in
Ford End Village
Hall.

Perennials, bedding
plants and shrubs for
sale.

Coffee and
homemade cakes.





Great Waltham C of E Primary School

We ended the spring term with our traditional egg decorating competition, well done to everyone who took part. I have included a picture of the winners so that you can admire the eggs! During our end of term Easter service, the school choir sang beautifully and I am pleased to announce that they will be taking part in the Great Waltham Festival of Choirs in June. GWPS is set in such beautiful grounds and I hope that the weather brightens up so that the children can make the most of them during this term. As you can imagine, the grounds take a lot of time and money to maintain so we are holding a family gardening event on Saturday 27th April between 10-12. We are asking for volunteers to lend a helping hand tidying up and gardening the beds around the school field. If you are a would like to help out, please come along on the day with some gardening tools, we would really welcome you. There will be some light refreshments as a reward!



Ford End C of E Primary School

We rounded off the Spring Term with some fabulous activities in school. Our PTA generously organised an Easter Egg Hunt for the whole school to enjoy. We were delighted that the sun shone and all the children successfully found an egg! Four of our pupils in Years 5 and 6 took part in the LIFE Education Trust Bake-Off competition, against children from Margaretting and Roxwell. The task was to bake and decorate some cupcakes, with a spring/Easter theme. We were absolutely delighted that the entries from Ford End were awarded first place and we now have a beautiful glass trophy proudly displayed in school.



We ended the term with an Easter service, led by Revd. Carolyn from Broomfield Church. The children sang Easter songs and listened to the older pupils retelling the Easter Story.

We are now looking forward to Summer Term and all that it may bring!

Waltham Wanderers

A village walking Group, the Waltham Wanderers, was established in 1995 since which time it has undertaken a 5 or so mile walk on a Sunday once a month.

All are welcome, there's no fee, just a willingness to enjoy the company of others while walking at an even pace and to enjoy the local countryside. The next walks are planned for 19th May and 9th June. If you're interested in joining us, contact Clare Lyne at clare.lyne11@googlemail.com



Great Waltham Village Choir

The Village choir has around 30 active participants. However, new members are always welcome. So, if you enjoy singing then you fulfil the qualification for joining the choir - no audition, no requirement to read music, no solos.

We meet during school term times on a Thursday evening in the Primary School Hall between 7.00 pm and 9.00 pm (with a coffee/biscuit break). The charge is £7 per session; the initial session is free. Come along and enjoy the singing and company.

Contacts – Malcolm 3601489 and Clare 361996

Norwich to Tilbury Consultation - from your County Cllr. Mike Steel



National Grid (NG) have launched the statutory public which will run until 18 June. It follows two non-statutory public consultations in 2022 and 2023, where just 4,000 people responded – 0.1% of the population of Norfolk, Suffolk and Essex. Which means 99.9% must be okay with the pylon route!

It is important that you make your views known. Visit nationalgrid.com/norwich-to-Tilbury where you will find all the info and the feedback questionnaire. You can also submit feedback via email to – contact@n-t.nationalgrid.com. You should have also received a Newsletter by post, for those close to the route, with summarised info. There are a number public information events, and webinars, which are listed on their consultation website. The Chelmsford section webinar is 5th June 6pm.

The current NG proposal assumes power is already on land at Norwich, so sees the cheapest option as overland pylons. I believe it would take Govt intervention to allow NG to pursue a more expensive offshore option. Please respond to the consultation - we need to do better than a 0.1% response rate

GREAT WALTHAM TWINNING TRIP TO FRANCE

Last few spaces!

Our group is visiting our twinned town of Ceyrat in France on 24th July for a week. There are still a few spaces on the trip. Are you interested?

We need new young families to join us!

Here are some of the young French members who visited us in Great Waltham last year. We'd love to take some young English families to Ceyrat with us this July.

Could that be you?

Here are the reasons you should come -

- Easy and convenient journey from Great Waltham by coach and ferry.
- You pay only your travel cost.
- You will be looked after by your host family.
- Ceyrat Twinning will arrange and pay for a week of visits and activities for you.
- Ideal for families with children learning French at school (but the ability to speak French is not essential).
- Enjoy French culture, food, wine, great weather and good company.

Be brave – take a leap of faith and come with us!

If you are interested or would like to know more, email me straightaway at joanna.2.steel@btinternet.com.

Or look at our website - <https://e-voice.org.uk/greatwalthamparish/great-waltham-twinning-associa/>

Great Waltham Parish Council

Clerk, W Adsheed-Grant, Great Waltham Village Hall, South Street, Great Waltham, Essex CM3 1DF Tel 07880 717329 clerk@greatwalthamparishcouncil.co.uk

This is a summary of some of the items discussed at the March meeting of the Parish Council. For more details, full and approved minutes of all Council meetings are available on our noticeboards and the parish website (e-voice.org.uk/greatwalthamparish).

In his County Council update Cllr. Mike Steel confirmed a new member led pothole repair scheme starts in April. He also indicated that the works on other agreed highway projects are now running a year behind schedule due to delays on one of the larger items. He mentioned, in relation to National Grid's transmission line project, ESO (the electricity system operator for Great Britain) had recently reported it had looked at nine options and suggested an overland route is still the cheapest – it is understood NG will consider the report as it looks to issue its formal consultation. Mike also confirmed that transport safety officers are to be introduced on buses, and that the recycling centre booking requirement has been made permanent.

We received representations in relation to an area of land at the southern entrance to Church Lane, Ford End. We confirmed the land is designated as a village green and is owned by the Council, as decided by the Commons Commissioner in 1984. We invited the owners of a local property to make further representations following a letter to them from the Council explaining the situation. The matter will be discussed again at a future meeting.

We made decisions confirming the basis of our allotments hiring fee structure and approved revised charges from September 2024. In particular, we agreed that hiring fees should continue to include both a 'per rod' rental element and a flat service charge for additional facilities. We agreed the pricing structure is broadly aligned with the market rate for the provision of such amenities, and as such offers good value for money for plot holders, noting also that in a typical year the Council subsidises the overall allotment provision by 50%.

We noted the decision made by the ECC Highways' cabinet member in relation to the Ford End average speed camera scheme and settled on the content of a response to his communication which had confirmed that ECC is currently unable to support the project (copies of both letters can be found on the parish website).

Remember, the parish's annual assembly is on Tuesday 7th May 2024 at Great Waltham Village Hall, beginning at 8.00pm, while the Council's next monthly meeting and AGM is on Monday 20th May 2024, at The Pavilion, Great Waltham Recreation Ground, starting at 7.30pm. As always, all parishioners are welcome to attend these public meetings.

Steve Gilbert, Chair

SCOUT BREAKFAST

Sunday 19th May - 9am to 11am



Bear Grylls,
Chief Scout says
"Join us at the May
Scout breakfast"

All this for £6 (all items), £4 (2 items fewer) and tea and toast.

Scout Hut,
Blossom
Way,
Great
Waltham



Great Waltham Parish News - Editors wanted

We are looking for new Editors to continue the publication. If you would be interested please contact Alison Bridge on 07547127493 or email gwparishnews@gmail.com. You will need a few spare hours each month and be able to use a computer.

Ford Rnd Senior Tea



The next meeting of the Ford End Senior Tea will be on Monday 20th May at Woodstock, Church Lane, Ford End. Please note the new summer time of 2.30pm. Anyone interested or has not been before please ring Sheila Bearman on 01245 237335 or 07977 077945

Thank you for all of the contributions to this edition of Great Waltham Parish News. Please send your contributions for the next issue, together with any enquiries or advertising requests, by e-mail to: gwparishnews@gmail.com.

The last date for inclusion in the June issue is May 16th.

gwparishnews@gmail.com