

Parish News

Great Waltham Ford End Howe Street Littley Green North End

JUNE 2022



Great Waltham Art Show 2022

The Art Show was back this year after an absence of 3 years. The 48th show attracted over fifty artists to display their work which meant that we were able to display over 250 pieces of work on our old and brand new display boards carefully made by Steve Huggins and paid for by the Great Waltham Community Network. There were also 240 pieces of work displayed in the portfolio section. Sales were strong again this year with

over half the artists selling and the commission from sales along with entry fees and refreshment sales meant that we have a profit of over £1400 to distribute to village organisations. The show could not take place without the help of over forty people across the weekend and a big thank you is due to all the helpers.

Great Waltham Horticultural Annual Plant Sale & AGM

On Saturday May 14th the Annual Plant Sale took place. It was wonderful to see so many local people attending the sale. The plants flew off the stalls with later attendees unfortunately missing out on many of the beautiful specimens. Thank you to Beryl Furley for organising this popular event and all those who donated or provided plants at reduced prices for sale. The society made £210 which will help to support the Annual Show on September 17th 2022.

Previous to the Plant Sale the AGM was held on the evening of 25th April attended by the committee and members. The committee has remained the same and two new members were welcomed. The formal meeting was followed by a hilarious talk by Alan Adcock describing 'Embarassing Moments' throughout his career on the land.



North End Jubilee Picnic Saturday 4th June

in the grounds of
Blackchapel



Let's come together to celebrate
the Queen's Platinum Jubilee

Bring your own picnic
Tea and squash provided

A message

Why does God allow evil in this life? Why doesn't He just end the war in Ukraine and stop the suffering? Why did He let so many people die of Covid? I could go on. Well, He is a wise, just and loving God who always wants the best for us, but gives us free will.

We have the choice to accept Him or reject Him: to do good or evil. Sadly as we don't live according to God's law of love and justice we live in a world with good and evil. Giving man the freedom to choose between good and evil has been God's policy since the beginning of time. He is not a dictator who controls our lives but is a God who will, if we ask, guide us in all we do and always for our good.

Prayer is an excellent way of keeping in touch with God. Our prayers don't have to have fancy wording or be long winded – we can just talk to God as a friend, like chatting with a loved one. We can stumble as we talk, repeat ourselves, or send up arrow prayers. He hears them all. Why not try it for yourself?

God's love is very wonderful, but He is holy and pure and can't have anything to do with wrongdoing. So, to solve this problem He sent His son Jesus to die on the cross, on our behalf, for all our wrongdoings (sin) so that we have a relationship with Him if we ask Him to forgive us. God doesn't force us to believe in Him – He loves us too much for that. The greatest expression of His love is in a verse in the Bible - John 3.16 "For God so loved the world that he gave his one and only Son, that whoever believes in Him shall not perish but have eternal life." - the gospel in a nutshell.

1 Corinthians 13, often used at weddings, is how we should love each other. Love is patient, kind, doesn't envy or boast, isn't proud or rude or resentful. It always protects, trusts, hopes, forgives and perseveres. Love never fails. This is God's description of love and because He is love this is what He is like.

May God bless you and keep you.

Carol Pritchard.



Church of England Services June 2022

Sunday 5th	11am	Communion	Great Waltham
Sunday 12th	9.30am	Communion	Ford End
Sunday 19th	10.00am	Community Worship	Ford End
	11.00am	Communion	Great Waltham
	11.00am	Communion	Chignals
Sunday 26th	9.30am	Communion	Ford End

Morning prayer is held every Monday at Ford End Church at 8.30am and every Wednesday at Great Waltham Church 9am.

Community Worship Sunday 19th June at 10am in Ford End Church. This is informal Family Worship with a local focus for Ford End and Great Waltham families. We look forward to welcoming you.

Contact: Alison Bates Parish Administrator
Tel: 07957 228467
admin@littleandgreat.org.uk



Photos of cherry blossom by Barry Teader

Church Matters

On 28th April we had a rather unusual Sponsored Bike Ride from Ford End Church to Tunbridge Wells.

Father George Guiver rode with an associate to raise awareness of Rev Arthur Cripps and the work he did in Zimbabwe plus the Tariro Charity. Rev Cripps, born in Tonbridge Wells, was a past priest in Ford End in 1894 and then went as a missionary to Tariro in Zimbabwe for a few years where he set up a program to help orphaned children and children whose parents were unable to look after them. Arthur Cripps returned to be priest again in Ford End for a few years but the calling to help in Tariro was too great and he left again to live in Zimbabwe and devote his life to this wonderful project. He set up a school and home for children and his good works still continue today. His grave in Zimbabwe is seen as a shrine by the local community. Many of the children have and still are achieving amazing results in exams and qualifications becoming Doctors, Nurses, Farmers, Financiers and much more. The wonderful thing about this is that so many chose to return to Toriro and give back to the children of today what they have had in the past. I thought this was a wonderful story and if you wish to find out more or donate to this wonderful charity the link to this is tariro.uk Hope for Youth in Zimbabwe



In Ford End Church there is a wonderful carving dedicated to Rev Arthur and his name is engraved twice on the board just inside the door. Do take a look when next you are visiting.
Sheila Bearman





Great Waltham Roadshow!

Come along and hear about the new DigiGo service.

- DigiGo is a fleet of electric minibuses
- The service can be booked on-demand (within 15-20 minutes) or up to 7 days in advance

Tuesday 14th June, 10am,
Recreation Ground Car Park,
South Street, CM3 1DF

www.digigo.uk  Book, Track, Ride
via the TravelEssex app

Little Waltham Gardening Club

Vegetable Self Sufficiency in a changing climate was the title of our May meeting of the Little Waltham Gardening Club. The speaker, Maïke Windhorst is an enthusiastic organic gardener based in Downham. Herself and her husband have 3 acres in which they grow a wide variety of vegetables. A great deal of planning is involved as they combine the traditional Bed and Row systems and rotate groups of vegetables over the seasons. Little goes to waste in their household with all garden waste going on their paths (between the rows of vegetables) so acting as compost which is conveniently at hand when required. An inspiration to us all.

Our chairman, Maggie Williams reminded us that the Little Waltham Open Gardens will be on Sunday 3rd July and all proceeds are in aid of Farleigh Hospice.

Our next meeting on 1st June is on Culinary Herbs and their Uses which should appeal to both gardeners and cooks.

On the 15th June, we have an outing to Furzelea Garden in Danbury followed by a visit to Bridge End Gardens in Saffron Walden on July 13th. In August we visit the Gardens of Easton Lodge so a full itinerary for the summer to look forward to.

For more information on the Little Waltham Gardening Club please check out our website www.littlewalthamgardeningclub.co.uk

Services at Blackchapel, North End June 2022

All main services will be at 3.00 pm unless otherwise stated

5th Platinum Jubilee Service 3 pm (Pentecost)
19th Family Worship 3 pm

For further information contact Patrick Hamilton on 01371 820095

URC Little Waltham June 2022

Contact Rev Hans Stein 01371875654/07763169605

Rev Geoffrey Griggs 01245471990

5th. Rev Lythan Nevard Moderator
12th Rev Geoffrey Griggs
19th John DeLacy
26th Rev Hans Stein. HC

Thursday 2nd June Jubilee Coffee & Cake
10am to 12 30

Saturday 18 th June Coffee Morning 10am

Great Waltham Parish Community Care Group

The aim of the group is to provide short term and ongoing help to meet the needs of elderly local residents for whom there is no statutory provision. Predominately this will involve providing transport to doctor or hospital appointments.

If you require the services of the group, please call our co-ordinators who are:

Gill Mitchell 01245 362215

Wendy Proctor Tel. 01245 360483

John Lattimore, Chairman

Tel. 01245 363818



Walthambury Women's Institute

Last month we held our Annual Meeting and it is pleasing to see that our WI is still attracting new members. During the meeting we welcomed Michelle Hardwick to show us how to massage and look after our hands.

Our next meeting is on Tuesday 14th June at 7.30 in the British Legion Hall. Our speaker will be Lynne DeJoodt and her subject is 'Chess'

New members and guests are always welcome.



Tea AND Talk

Everyone is welcome to join us for our monthly morning of bacon butty and bustle. Plus, each month we will be visited by local craft people selling their homemade goods.

10.30am to 12.30pm
Last Wednesday of every month.

Parish Directory

To advertise in the Parish News, please contact us by email on gwparishnews@gmail.com

If it needs **PRINTING** from Stationery & Leaflets to a Bespoke Glossy Brochure

GIVE US A CALL
Fast • Efficient • to Budget



T: 01787 479479
E: info@fmlitho.co.uk
W: www.fmlitho.co.uk

L. BARTRUPT & SON LTD
Lavenders Farm
Ford End
Chelmsford
Essex CM3 1LL



Locally grown selected potatoes (25kg bags)

Available in season
October to April

Red, Whites & King Edwards

ALWAYS OUTSTANDINGLY GOOD VALUE
Free local delivery for larger orders

Telephone: 01245 237371



Structural Steelwork, Steel Fabrication, Gates, Railings and anything for the garden

Tel: 01245 237233

enquiries@plesheyforge.co.uk

Unit 20, Warners Farm,
Main Road, Howe Street
Chelmsford CM3 1BL

www.plesheyforge.co.uk



HJM Landscapes

- Tree Surgery
- Equine and Stock Fencing
- Domestic Fencing
- Pond Restoration
- Landscape Design

01245922015
info@hjmlandscapes.co.uk
www.hjmlandscapes.co.uk

Wood Automotive

MOT's, Vehicle Servicing
Tyres, Vehicle Diagnostics
Air Conditioning Repair
Clutches, Welding
Free Local Collection

"We look forward to seeing you and your car"
Neil and Sarah

Unit 1 Walthambury Farm
Pleshey Road, Great Waltham
CM3 1AZ

www.woodautomotive.co.uk
01245 361180



Willsher and Son Electrical Contractors

- All work insured and certificates issued where applicable
- No job too small, free estimates
- Based in Great Waltham
- Reliable family business

07970 759565
info@willsherandson.co.uk
www.willsherandson.co.uk
or find us on Facebook

Electrical Safety Register
ELECTRICIAN + ECA

CHELMSFORD PLUMBING AND HEATING LIMITED

RELIABLE FAMILY RUN BUSINESS

BOILER SERVICES, BREAKDOWNS AND REPAIRS

NEW BOILERS AND HEATING SYSTEMS

ELECTRICAL WORK UNDERTAKEN

T: 01245 478 588
W: WWW.CPH.UK.NET







The Rose & Crown
between Little Waltham and Great Waltham



A Great Little Pub and Restaurant with good food, and a warm and friendly atmosphere

Open All Day

Ben and his staff will be delighted to welcome you. If you want to ensure a table is available

Telephone 01245 360359
www.roseandcrowngreatwaltham.co.uk

Walthambury Stores
Great Waltham, Essex



POST OFFICE Post Office opening times
Monday to Friday 9am to 5.30pm
(open lunch hours)
Saturday 9am to 12.30pm

When visiting the Post Office, why not use the shop? You will find -

- Groceries, Fresh Produce, Sausages & Bacon, Newsagent, Stationery, Dry cleaning, Delicatessen, Frozen Food, Greeting Cards, Photocopying, National Lottery, Car Tax

Barrack Lane, Great Waltham
Telephone: 01245 360278

Whether you are religious or not, would prefer a burial or ash interment, a service or a wake afterwards, Old Park Meadow can help.




Old Park MEADOW
NATURAL BURIAL GROUND

Tel: 01245 806332
www.oldparkmeadow.co.uk

Coppice Lane, North End, behind the Butchers Arms Pub, Chelmsford, Essex, CM6 3PL

YOUR LOCAL COUNTRY STORE



ernest DOE power
where you can buy with confidence

FYFIELD, ONGAR CM5 0NS
TEL: 01277 899464

up up & away

Hulton Hall
South Street
Great Waltham
07501 313321
upupawaypreschool.co.uk
upupawaypreschool@gmail.com

Looking for a preschool with a large, natural outdoor space and confident, happy children?
Come and visit us!

A & W Gowers LTD
Specialist Joinery Manufacturers

A local family run company with many years of experience providing bespoke joinery to trade and private customers.

Conservation, Restoration, Ordinary or Contemporary, we can manufacture and install all types of work.

Windows	Fitted Furniture
Doors	Kitchens
Conservation	Wardrobes
Gates	Bookcases
Stairs	...and much more

For free friendly advice and estimates please contact us at
www.awgowers.co.uk
Howe Street, Great Waltham, Chelmsford
Telephone: 01245 362737
Now selling eco-friendly stove briquettes

JCMSERVICES
AMENITY AND GROUNDCARE LTD
JCM-SERVICES.CO.UK | 01245 408 777



ARBOCULTURAL SERVICES



GROUNDS MAINTENANCE

01245 408777
www.jcm-services.co.uk
james@jcm-services.co.uk

Visit our website for more info

AD FUEL OILS LTD.
Your local answer!

NOW SELLING LPG AND AdBlue



Commercial and general public welcome with easy access for all cars and vans

Yard sales from A D Fuel Oils Ltd
Barnters Lane, Great Leighs, Nr. Chelmsford, Essex CM3 1QX
Opening Hours: Monday-Friday: 8am - 5pm
Saturday: 8am - 1pm
01245 362616 • www.adfueloils.co.uk

Products available for collection or delivery:

- Petrol
- Diesel
- Kerosene
- Gas Oil/Fed Diesel
- PBO
- Paraffin
- AdBlue
- LPG
- 20L containers
- 205L containers
- Barrel dispensers
- Rotary pumps
- Boiler additive (Additive for Aga's)

Are you struggling to find the time to get everything done?
Is your life one constant balancing act?
Why don't you let me lighten the load
Let me be your extra pair of hands, helping you create balance in your life



HANDY LITTLE HELPER

Contact Me:
Francesca Bradford
07780614747
fbradford.handylittlehelper@gmail.com
www.handylittlehelper.co.uk
Fully Insured & DBS Checked

FELLAS

hair

Chelmsford Rd, Gt Waltham
Chelmsford CM3 1DE

Tel: 01245 360 024

Brian Honeywood
07771 534 377

ALL ABOUT GARDENS

Garden Maintenance & Clearance
Tree Surgery & Removal
Hard Landscaping



Robert - 07879 003135

WILD AND ROOTED
FARMING



Exclusively grass-fed
Aberdeen Angus beef.
Sustainably reared in Gt Waltham

FROM FARM TO PLATE
WILDANDROOTEDFARMING.CO.UK

Free Quotes

EVERETT PAINTING

- INTERIOR & EXTERIOR
- WALLPAPERING
- EST OVER 20 YRS
- FULLY INSURED
- ONLINE PORTFOLIO

TEL 07595 534872
www.everettpainting.biz

Andrew Moulder MBPR
(Pest control)

Koicom Services

Great Waltham
Drewster357@outlook.com
07845 642815
01245 922064

Pest Control, Wildlife management, grass & hedge cutting

Full member BPCA
Fully insured Est 2011

www.Checkatrade.com/KoicomServices

TMFIT

SPECIAL OFFERS

5 X ONE-TO-ONE TRAINING £150

FREE GROUP TASTER SESSION

tmfit.co.uk
07947 427 489

Jayne's

Upholstery Classes Ltd



10 week termly upholstery classes

held at
Little Waltham and Great Totham

For more information contact
Jayne on 07881816889
or email

jayne.interiors@googlegmail.com

Tai chi classes

With Anna Engwell
Beaulieu Community Centre

- Saturday 1.00pm
- Tuesday 1.30pm

Good Easter Village Hall

- Friday 7.30pm

Karate Classes

With Elliot Engwell
Beaulieu Community Centre

- Tuesday 6.00pm
- Thursday 6.15pm

Great Waltham Village Hall

- Friday 4.00pm

Good Easter Village Hall

- Friday 5.30pm

Contact Anna at
anna.engwell@gmail.com
Or 07760 876945



Village Roofing Ltd

- New Roofs, repairs and general maintenance.
- 24 hour emergency call out.
- Chimneys and Lead work
- Blocked guttering & drains.

01245 843169
07946 242636

email:info@villageroofing.co.uk

City & Guilds

Checkatrade

To advertise in the Parish News

please email

gwparishnews@gmail.com

F & W
Fresh & Wild Fish

Fresh fish and seafood
EVERY SATURDAY 9AM-3PM
@ The Beehive Gt Waltham

Orders, event bookings and deliveries taken

@Freshandwildfish
07902 854 214
facebook.com/freshandwildfish
freshandwildfish@icloud.com

Dementia Adventure is a charity supporting people living with dementia and their friends and families. We believe that anything is possible with the right amount of encouragement and support which is why we offer small-group holidays for people living with dementia, enabling them to get away with their friends and family. As well as delivering holidays we also provide training for friends, family, volunteers, staff and organisations to help them think differently about dementia and equip them with the skills and confidence they need in their role. All our work is supported by a wonderful group of volunteers who are based all over the country but we are based in sunny (most of the time) Ford End and we need your help! At present we have 2 local volunteering roles available both based at our office in Ford End.

- An office volunteer/s to help answer the phones, take messages and other general office support.
- A volunteer/s who could help us take care of our 2 small MPVs- this will be mostly at the weekends getting the vehicles hoovered out and possibly refuelled ready for the next adventure!

We also have opportunities to volunteer on our holidays accompanying and supporting our clients and Dementia Adventure team on Monday to Friday breaks (all expenses are covered).

If you would like more information on any of these roles or you think you could benefit from our services please do not hesitate to contact us in the office 01245 237548, online [Contact Us](#) » [Dementia Adventure](#).

Our website is dementiaadventure.co.uk where details of everything we offer can be found. Catherine Reed

gwparishnews@gmail.com

News from Great Waltham C of E VC Primary School

KS2 SATs returned after an enforced absence in the academic years 2019-20 and 2020-21. The current Y6 children completed 6 separate tests in the second week in May across English and maths and deserve huge credit for their positive and mature attitude over the 4 days. They certainly earned their sugary treats and rounders match to conclude the week! Thanks to all the school staff and families for supporting them throughout their schooling. Each week the calendar keeps us all busy with events, of which there are many to look forward to - Isle of Wight Trip, Sports Day, Schools Gotta Dance, FOGWS (PTA) events and transition activities for Y6 to name a few.

Our rounders team placed 3rd out of 5 schools at a tournament at Baddow High School. With better fielding they may have been placed 1st or 2nd and made the Chelmsford finals. We entered two Y6 teams for bowls at Falcon Bowls Club – there were 20 teams there altogether. Huge congratulations to the

The Rounders Team



children, Team A placed 3rd and earned bronze medals, Team B placed 1st to earn gold! They all enjoyed the experience.

The Y5/6 cricket team played at Great Waltham Cricket Club on 3 May. They played three matches (8 overs per match) winning two



The Bowls Team

games and losing one – they have qualified for the next round. KS2 enjoyed their Vikings and Anglo-Saxons day, with 'History off the Page'. They loved dressing up and participated in: Medicine making, Candling making, Bracelet making, Pottery (clay), Ink making and writing, Using paints to write names, Fortune stone crafting, Necklace printing (with foil) During the afternoon the children had the job of becoming



Year 6 SATs after it's over!



The Vikings

archaeologists and carefully used a paint brush to uncover soil to find the hidden Viking objects. Everyone took part and enjoyed the experience as well as willingly dressing up!

To finish off their 'Great Fire of London' topic, KS1 enjoyed a visit from our local Firefighters. Thank you to the crew from Chelmsford for coming along to show us the fire engine. The children were lucky enough to have a go with the hose and climb in to the vehicle.

The children are looking forward to the Queen's Diamond Jubilee and celebrating in the community. At school teachers are planning some special activities, we will have a themed lunch (Victoria Sponge for pudding!) and dress in Red, White and Blue!

Senior afternoon tea in Ford End

This months tea will be on Monday 6th June at 2.30pm at Woodstock, Church Lane, Ford End. CM3 1LH.

We will be able to enjoy chatting about the Jubilee Weekend over a cuppa.

Look forward to seeing you all.

All welcome.

Sheila Bearman 07977077945

Ford End C of E Primary June 2022

June brings the sunshine and the end of the exam season. The children completed their formal exams with great enthusiasm and dedication and we were very proud of them all.

We celebrated the Queen's Jubilee earlier than the rest of the country and had a fantastic party in Her honour. It was good to welcome Mr Dutnall and Mrs Broom from LIFE Education Trust to our party and the children made fantastic crowns to mark the occasion. We celebrated with cakes and home-made scones.

It was good to welcome a family from the Ukraine to our school and the children have settled in very well, expanding their vocabulary every day.

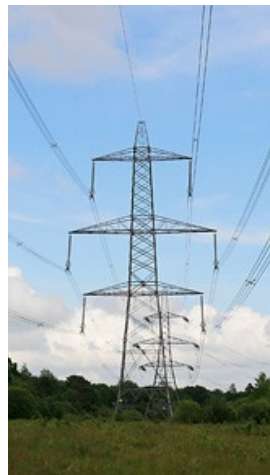
We will be welcoming the new EYFS children very soon, and hope they enjoy playing outside and getting to know their classroom, ready for next year. It is good to be expanding the numbers in our EYFS classroom.

This year has gone by so quickly. If you know anyone who wants to join our beautiful village school, in September 2022, please share our phone number.

If you would like to visit our school, phone 01245 237209 during office hours, to be shown around the school.

Maire O'Regan Executive Headteacher

Essex Suffolk Norfolk Pylons



The National Grid is planning to run a new high voltage (400,000 volts) over-ground power line from Norfolk, via Suffolk, Essex onto Tilbury through East Anglia's countryside to connect new off shore wind generation.

It will be supported by 50m (164ft) tall steel lattice pylons (equivalent to a 14-storey high building) approximately every 300m along a 181 km route

through the countryside.

Those on the route have been informed. However there are other options to this route and a consultation is being held until June 16th 2022. For more information and to have your say please visit: www.pylonseastanglia.co.uk/actions.html or Google 'www. National Grid: East Anglia Green'

The Great Waltham Church volunteer grass cutters AKA "The Cutting Crew"

Hi my name is Keith Davies and I have lived in Great Waltham for over twenty years, about 10 years ago I started volunteering to cut an area of grass in the Church graveyard, I found out I was one of a number of other volunteers who carried out this work. Ten years on and I now have the lovely responsibility for Co-ordinating the volunteers who work tirelessly to carry out this task.

It may not be widely known that 10 volunteers carry out the task of cutting and strimming the entire graveyard, each having their own specific area, from March through to November and during the growing season (now), may require two cuts a week. This can be difficult work during an active growing season and was none more so than through Covid lockdown when many volunteers could not get out to carry out their task.

However the volunteers rallied and managed to maintain the grave yard which became quite the place of solace during those difficult times. There is a huge amount of general maintenance to be undertaken in the grave yard and grass cutting is one of the main activities. We don't always have the required quota of volunteers to cut all areas but the team muck in and assist each other to ensure that the work is achieved.

This year we are intentionally leaving the area to the South side of the Church adjacent to Baddinghams uncut to encourage the wild flowers to grow there and to encourage the wild life that flourishes in this environment. So please don't think it is being ignored and our Volunteer who cuts this area will maintain and cut the path that runs through this area as well as a cut border to enable people to walk around it.

I do require two more volunteers to cut two small (yes honestly!), areas which at this time dont not have a volunteer allocated to them, so if you can give up an hour a week to help maintain this beautiful area please feel free to contact me via my e-mail keithdavies1756@gmail.com or call me on 07817018375 to talk it through.

So if you are walking through the graveyard and you see someone cutting or strimming the grass, remember they are willing volunteers, feel free to chat to them and if you like what you see, tell them its always nice to get a little feed back"



Great Waltham Parish Council

Clerk, W Adshead-Grant, Great Waltham Village Hall, South Street, Great Waltham, Essex CM3 1DF Tel 07880 717329
clerk@greatwalthamparishcouncil.co.uk

The following is a summary extract by Peter Jackson (chair) of the Parish Council meeting of April 25th. The full and approved minutes are published on the parish council notice boards and at the parish website.

In response to the points made by a parishioner about the parking at either end of Duffries Close which makes it dangerous when exiting from the Close the Parish Council decided to discuss the request for 10m of double yellow lines at both ends of the Close at the next meeting.

City Councillor Steel reported that the City planning committee had considered and refused an application for a drive to be constructed across the green in Cherry Garden Road because they wished to preserve green spaces. Points were made to the committee about the inconsistent handling of similar requests in the past and that the planning police ref green spaces in Cherry Garden Road had not been subject to consultation by the City council with residents.

The Parish Council's annual accounts for the year ending 31st March 2022 were adopted and the internal auditor was re-appointed. Not only are the financial workings of the council reviewed regularly by the finance committee of the council but also by an auditor employed by the council who regularly finds the accounts accurately kept by the responsible finance officer ... the parish clerk.

The National Grid are to consult about the proposal to run a line of electricity pylons through the parish. The council expressed the wish that as many people as possible would go to the information event in Writtle village hall on May 24th. Every affected household has been sent a booklet by the National Grid.

The Pavilion in which this meeting was held will soon be available for hire by individuals and groups and the council has considered by the documents and policies relating to hire.

Sadly there has continued to be some mindless vandalism in Great Waltham, notably at the recreation ground. Some of the external structures of the pavilion have been destroyed and graffiti has appeared on the play equipment and the pavilion. It had been hoped that the perpetrators of the previous incidents had begun to grow out of this stage but recent events have proved we were too optimistic.

Last month I mentioned that some of the wild flower plugs at Ford End playing field had been uprooted and I blamed people for this. It would seem a possibility that birds could have been the culprits.

The next meeting is on June 13th at 7.30



Great Waltham Village Hall
presents

A RIGHT ROYAL TRIVIA QUIZ

6.30pm Friday 3rd June 2022

Tickets only **£5** from Walthambury
Stores - includes ploughman's supper
from the Great Waltham W.I.

CASH BAR

greatwalthamvillagehall@gmail.com

THEY'RE BACK!

2022 PLATINUM JUBILEE

FORD END SCARECROW FESTIVAL

JUNE 12TH 2022 12PM - 5PM

CLIPPA TEA & SLICE O' CAKE AT THE CHURCH
WORZEL'S TREASURE HUNT
CLASSIC CARS

Join us for a fun family day when, once again, the scarecrows take over Ford End.

Build your own scarecrow display with prizes for the most creative.

Follow Worzel's Treasure Hunt to solve his riddle but then you'll have to catch him to get your prize!

REGISTER YOUR DISPLAY FOR THE TREASURE HUNT MAP WITH SANDRA ON 07736965286

Thank you for all of the contributions to this edition of Great Waltham Parish News. Please send your contributions for the next issue, together with any enquiries or advertising requests, by e-mail to: gwparishnews@gmail.com.

The last date for inclusion in the July issue is June 16th

gwparishnews@gmail.com