



# Parish News

Great Waltham Ford End Howe Street Littley Green North End

## OCTOBER 2017

### Blooming Marvellous Show



Some of the wonderful produce on show

In the fruit and vegetable section there was strong competition from new entrants giving some of our more seasoned exhibitors a run for their money. Well done Jan Bloomfield and Jo Palmer!

Among the most popular were the handicrafts and domestic classes. Both judges and visitors alike were tempted by the fabulous cakes and cookies on show.

There were plenty of fine tipples in the Wine, Beer & Spirits classes, many of which were strongly contested, with Des Bass achieving three firsts. Local photographers and handicraft fans kept the judges entertained with their entries and there were prizes for Sheila Sheldrake with her beautiful quilt winning the 'Best in Show' category.

The children's classes were also down on last year but we did have some fantastic 'Garden on a Plate' exhibits with the special RHS Junior Competitor's Awards of Merit going to Bella Lopez-Real in the children under 8 classes, and Toby Wincott in the children aged 8-15. (Continued on Page 3)

Exhibits at Great Waltham Horticultural Society's Annual Flower & Produce Show transformed the village hall and school hall into a sea of colour and creative craftwork on Saturday, 16th September. Continuing the lengthy tradition of village shows, the event attracted many entries from young and old alike.

The cactus classes were hotly contested with father and son rivalry from Mike and Patrick Abel and mother and daughter entries of Jane and Lucy Moore. For various reasons, the dahlia entries were somewhat reduced but we do hope to see a return of these beautiful flowers next year. The standard of produce was amazing. Carrots, beans and tomatoes tempted the tastebuds; and cakes, bakes and makes, filled plenty of table-tops.



A sample of the tempting cakes

### Great Waltham Parish Productions' "Murder in the Med"

played to a packed audience at Gt Waltham Village Hall on Saturday 9th September.



All booked out and everyone buzzing.

Set on a cruise ship in the Mediterranean, Captain Jonah Haddock welcomed the audience on board with a cocktail before they settled down to study the murder mystery play. Audience interrogation of suspects under the inexpert guidance of Inspector Clueless uncovered the murderer, with team Praise B led by Rev. Caroline Brown winning the prize after a tie break with team Harper's Bizarre. The excellent players on stage took to their roles enthusiastically, keeping the audience in fits of laughter throughout: Mike Steel (Inspector Clueless), Colin Reynolds (Cato), David Chapman (Captain Haddock), Sam Gouch (Hattie Fitwell), Kalli Cocking (Brandy Whine), Jean Summers (Felicity Starstruck), Andy Tinsley (Monty Moneybags) and Robin Harper (Jack Strangelove). Jack Dixon entertained with a beautiful rendition of songs during the excellent international buffet meal and

everyone was supported by GWPP's hard working front of house and backstage team.



Watch out for "Jill and the Beanstalk" next spring!



## From the Vicarage,

Dear friends

Which is your favourite season? Spring with the promise of new life, daffodils and fresh green leaves or languid summer with longer days and sun on our faces and easy fun out in our gardens or on the beach or cosy winter of big jumpers by the fire or my favourite, Autumn: season of mists and mellow fruitfulness with trees decked in orange, red and gold splendour, slanting sunlight and stunning sunsets, harvests mainly gathered in. I guess I also love that we live in a place where we can see the seasons turning, and know that the year has a rhythm. So here we come to September again, a time of new beginnings.

And part of our new beginning this year is to welcome Jackie Thornton as our curate – she has been working as a lay worker over the summer and on 30 September she will be ordained deacon in Chelmsford Cathedral. The Church of England can be a bit weird and the terms don't make much sense but Jackie is an assistant vicar who is learning her trade having spent time in college learning the theory – as well as being a Mum and working with the Schools Youth Ministry. Phew!

So why are new beginnings important? And why might you want to come along and celebrate this with us? The new beginning I have had recently is the birth of my youngest grandson, Roman who is now 3 months old. It is wonderful to see this new person develop and grow and trust us and being loved by his parents and begin to smile and interact with the world and take pleasure in kicking his legs and waving his arms and make his toy make a (rather annoying) noise. Pleasure in the simple things of life, a chance to see again what matters in life and to see the world afresh. I love the way little children are delighted and intrigued by the most ordinary of things, a puddle, a cigarette end, a bug, whatever next!

And this service for Jackie is a new beginning for us, a chance to refresh ourselves and Jackie brings fresh eyes, not like a child – obviously – but still that sense of something good and new starting.

What people say about coming to our services is that find it friendly and welcoming, everyone is accepted as they are and there is a warm sense of community.

So the possibility of coming to either **Jackie's ordination in the Chelmsford Cathedral on 30 September, or our Sunday service at Great Waltham on 1 October** with cake and bubbly afterwards (details for both below) is that you will have a good time and a sense of something new starting for you as well as us.

Come and join us.

Revd Caroline Brown

### Ford End Senior Tea

The next tea will be held at 2pm on Monday, 16th October at Woodstock, Church Lane, Ford End. Anyone interested or who has not been before, please ring Sheila Bearman on 01245 237335 or 07977 077945



## Church of England Services in October

<b>Sunday 1st Oct</b>	10.30am	Joint Service	Great Waltham
		Jackie's first service as Deacon.	
		Guest speaker Mr Chris Smith	
		with cake and bubbly afterwards!	
<b>Sunday 8th Oct</b>	8.00am	Traditional communion	Great Waltham
	9.30am	Harvest Service	Ford End
	11.00am	Harvest Service	Great Waltham
<b>Sunday 15th Oct</b>	9.30am	Communion	Ford End
	11.00am	Communion	Great Waltham
	11.00am	Harvest Service	Chignals
		then on to the Community Orchard	
<b>Sunday 22nd Oct</b>	9.30 am	Family Service	Ford End
	11.00am	Communion	Great Waltham
	5.00pm	Healing Service	Great Waltham
<b>Sunday 29th Oct</b>	10.30am	Joint Service	Great Leighs CM3 1PP

**Contact: Alison Bates Parish Administrator**

**Tel: 07957 228467**

**admin@littleandgreat.org.uk**

## Services and Events at Blackchapel, North End OCTOBER

Sun 1 <sup>st</sup>	Family Worship	P Hamilton
Sun 8 <sup>th</sup>	Holy Communion (bcp)	Rev S Bazlinton
Sun 15 <sup>th</sup>	Holy Communion (cw)	Rev S Bailey
Wed 18 <sup>th</sup>	Prayer Meeting	Schoolroom 8pm
Sun 22 <sup>nd</sup>	Morning Worship	J Turton
Sun 29 <sup>th</sup>	Worship at Felsted Church	11am

bcp = Book of Common Prayer; cw = Common Worship  
Services start at 10.00 unless otherwise stated  
Enquiries: contact P Hamilton on 01371 820095

## Services & Events at Lt Waltham United Reformed Church October 2017

Contact: Rev Geoffrey Griggs 01245 471990  
Services 10.30am each Sunday

Oct 1st Charles de Lacy  
Oct 8th Martin Payne 6.30 Rev G. Griggs HC  
Oct 15th Rev Geoffrey Griggs  
Oct 22nd Douglas Wood HC  
Oct 29th Rev Geoffrey Griggs

Thursday 5th October Gossip & Guzzle 11am - 1.0pm  
Thurs 12th October Pippins 9.30 - 11.30am  
Sat 21st October Coffee Morning in Schoolroom 10.0am

## Ford End Gardening Club

At our September meeting we enjoyed a talk given by John Mead on planting containers for Autumn and Winter. He gave a hands on demonstration with colourful plants including pansies and cyclamen and told us a little known fact that the pansy family originates from the Himalayas. Suitable compost was discussed along with the use of vermiculite and slow release fertiliser. Since his retirement from international banking John has been an executive chauffeur, become a keen horticulturalist, a judge for many shows and is a leading light of Hutton Horticultural Society and is much in demand as a speaker.

**Our next meeting starting at 7.30 is on Monday 9 October in the Ford End village hall when the speaker will be Brian Wickenden talking about Gardening in Winter.** You are welcome to come along and join us.



GREAT WALTHAM  
HORTICULTURAL  
SOCIETY

*(Continued from the front page)*

The main event was preceded by the Not-So-Serious Dog Show, which gave many of the parish's four-legged residents the chance to put their best paw forward. Winning plenty of hearts was Lucy who took home the prize for the prettiest dog whilst the show champion was Bailey. This year's dog charity was the Essex Search & Rescue who are part of Lowland Rescue. They arrived with a beautiful puppy they are training and it was very interesting talking to them about their work. Thanks to all your donations and support £54.09 was raised for this very worthwhile local charity.

As always, there were too many winners for a personal mention, but thanks go to everyone for supporting the show and helping to continue its long tradition. Special thanks too, to all the judges, volunteers and supporters - especially Sheila and Peter Sheldrake - everyone's help was most greatly appreciated by the Horticultural Society Committee.



## Up Up & Away Preschool

As we start our new term we welcome to preschool 6 new children and their families and also 2 new members of staff. The last 2 weeks have been busy settling the new children in and getting the older children back into the routine of preschool. We have managed to enjoy a couple of walks out around the village searching for conkers and avoiding heavy rain showers. Over the summer holidays we made some slight changes to our garden, which is proving to be a big hit with the children. Our older children enjoyed planting some spring bulbs in their new patio area so we look forward to those popping up in the new year.

We have changed our days at preschool so we now open all day every week day apart from Wednesday's. This now means our **Toddler group runs on a Wednesday afternoon, from 1.15pm to 2.45pm.** The group is open to families with bumps, babies and toddlers. Each session is £2 per family but your first session is free.

## WALTHAMBURY WI

The WI is supporting the Rucksack Project which is providing homeless women with personal care products and members have been requested to bring items, plus a bag (to put items in) along to the October meeting. Twenty four of our members have now applied for tickets to see An American in Paris which will be on 8 November.

Our next meeting will be on **Tuesday 10 October** and Sandra Sparrowhawk will give a talk entitled a Question of Colour.

Meetings start at 8.0 pm and are held in the Legion Hall, Great Waltham and visitors are welcome.



## Ford End Dancing

The club will meet on 4th October and 18th October at 7pm in Ford End Village Hall. For more information, contact Sheila Bearman on 01245 237335 or 07977 077945

## News from Ford End Primary School



Changes are afoot at Ford End School. At the end of last term we said goodbye to Hazel Arnill, who was the Headteacher here for 11 years. We gave her a good send off and the hall was packed with parents, children staff and friends, from past and present. Hazel performed a beautiful piece on the flute, accompanied by pianist Clive Smith. Leaving gifts were presented and performances given by each class. It was a very moving time for all involved.

We also said goodbye to another member of staff who retired, Charlotte Aires. Charlotte was our SenCo for 5 years. We wish them both well as they start their retirement.

Our new Executive Headteacher is Liz Maycock who is also Headteacher at Little Waltham School; she will be working alongside Sarah Cottee who is Head of School. We also welcome Debbie Rudkin as our SenCo:

All the children have settled in well with 11 new children joining us in Foundation Stage along with 2 new families who have children in other year groups.

The term is now in full swing and the classes have started their topic areas. Class 1 are learning about Holidays and classes 2 and 3 are studying the Stone Age to the Iron Age. The children have also been working hard on their contributions for the Great Waltham Horticultural Show. They have made entries in the handwriting/art sections during school time. However, all children are encouraged to make something at home to enter as an individual. Those who have previously taken part get great pleasure producing their entries and then proudly seeing their work displayed on the day.

# Parish Directory

To advertise in the Parish News, please contact us by email on [adverts@parish-news.co.uk](mailto:adverts@parish-news.co.uk)

If it needs **PRINTING** from Stationery & Leaflets to a Bespoke Glossy Brochure **GIVE US A CALL** Fast • Efficient • to Budget



**T: 01787 479479**  
**E: info@fmlitho.co.uk**  
**W: www.fmlitho.co.uk**

**CHELMSFORD PLUMBING AND HEATING LIMITED**

RELIABLE FAMILY RUN BUSINESS     

BOILER SERVICES, BREAKDOWNS AND REPAIRS

NEW BOILERS AND HEATING SYSTEMS

ELECTRICAL WORK UNDERTAKEN

**T: 01245 478 588**  
**W: WWW.CPH.UK.NET**



**Structural Steelwork, Steel Fabrication, Gates, Railings and anything for the Garden.**

Tel: 01245 237233  
[enquiries@plesheyforge.co.uk](mailto:enquiries@plesheyforge.co.uk)

Unit 20, Warners Farm, Main Road, Howe Street Chelmsford, CM3 1BL  
[www.plesheyforge.co.uk](http://www.plesheyforge.co.uk)

**EVERETT PAINTING**  
Interior - Exterior - Painting - Decorating



- Quality work
- Free Quotes
- Fully insured
- Est over 20 yrs
- Online Portfolio

**MOB: 07595 534872**  
**TEL: 01376 335831**  
[www.everettpainting.biz](http://www.everettpainting.biz)

**FennWright**  
Chartered Surveyors | Estate Agents | Property Consultants

**'trusted'** property experts

- > Experienced and knowledgeable in your area
- > Large applicant database with access to London buyers
- > Competitive fee structure

Call today for a **FREE** market appraisal

**01245 292 100**  
[fennwright.co.uk](http://fennwright.co.uk)

**Pleshey Tree Services**



Tree Surgeons & Arborists

**Telephone 01245 362988**

**Pruning & Shaping**  
**Felling & Removal**  
**Planning & Advice**  
Free quotations & advice  
NPTC qualified  
Council Approved  
Work compliant to BS3998 & BS5837  
Fully Insured  
e-mail:  
[tomcrees@plesheytreeservices.co.uk](mailto:tomcrees@plesheytreeservices.co.uk)  
[www.plesheytreeservices.com](http://www.plesheytreeservices.com)

**Picture Proud**  
UNIQUE PERSONALISED GIFTS

Making memories last forever...



**GIFTS & CARDS, KEEPSAKES, PICTURE FRAMING & MUCH MORE!**

Unique gifts you won't find on the high street

Find us at: Warners Farm, The Courtyard, CM3 1BL  
We're just off the Green Man roundabout  
[www.pictureproud.co.uk](http://www.pictureproud.co.uk)  
01245 360317

**The Rose & Crown**  
between Little Waltham and Great Waltham



A Great Little Pub and Restaurant with good food, and a warm and friendly atmosphere

Open All Day 

Ben and his staff will be delighted to welcome you. If you want to ensure a table is available

**Telephone 01245 360359**  
[www.roseandcrowngreatwaltham.co.uk](http://www.roseandcrowngreatwaltham.co.uk)

**Walthamby Stores**  
Great Waltham, Essex



**POST OFFICE** Post Office opening times  
Monday to Friday 9am to 5.30pm (open lunch hours)  
Saturday 9am to 12.30pm

When visiting the Post Office, why not use the shop? You will find -  
Groceries, Fresh Produce, Sausages & Bacon, Newsagent, Stationery, Dry cleaning, Delicatessen, Frozen Food, Greeting Cards, Photocopying, National Lottery, Car Tax

**Barrack Lane, Great Waltham**  
**Telephone: 01245 360278**

**Woody's Peat**  
Great Baddow est. 1982

Suppliers to the home gardener of bagged:

- Somerset peat
- Growbags
- Topsoil
- Mushroom compost
- Redwood bark

Our compost and growbags are peat based and are free of contaminated garden and trade waste.

Personal service and free delivery  
15 mile radius of Chelmsford  
01245 473912 anytime

**Bowman Carpentry & Joinery**



FITTED UNITS-WARDROBES  
PARTITIONING-SHELVING  
FLATPACKS-SKIRTING  
DOORS AND FRAMES  
ARCHITRAVES-FLOORING  
AND MORE.

No job too small Free quotes  
Full Public Liability Insurance  
**07984 947531**  
[dean@bowmanjoinery.co.uk](mailto:dean@bowmanjoinery.co.uk)  
[www.bowmanjoinery.co.uk](http://www.bowmanjoinery.co.uk)

*The Little Retreat*

Hair, Nails & Beauty

142 The Street  
Little Waltham  
Chelmsford  
Essex  
CM3 3NY

01245 362870

[www.thelittle-retreat.co.uk](http://www.thelittle-retreat.co.uk)

10% off  
first appointment upon presentation of this advertisement



**CLEAN BEE**

Domestic and Commercial Cleaning  
Fully Insured  
Professional, Thorough Service  
Friendly and efficient  
References Available

Contact Nicol  
0793596855

**WCT BAYFORD LTD**

**SOLID FUEL MERCHANTS**

- Coal & Smokeless Fuels
- Seasoned Logs and Kindling
- Peat & Compost
- Gas Bottles & Charcoal

**Tel: 01279 723217**

Colventors, Grinstead Lane,  
Little Hallingbury, CM22 7QX



**The 2018 Community Calendar from Stop Stansted Expansion (SSE) calendar** is now available by mail order and at outlets across the region priced at £7 size A3

Contact at  
[info@stopstanstedexpansion.com](mailto:info@stopstanstedexpansion.com)  
or on 01279 870558. See also [www.stopstanstedexpansion.com](http://www.stopstanstedexpansion.com).

**AD FUEL OILS LTD.**  
Your local answer!

**NOW SELLING LPG AND AdBlue**



Commercial and general public welcome with easy access for all cars and vans

Yard sales from A D Fuel Oils Ltd  
Bentons Lane, Great Waltham, Nr. Chelmsford, Essex, CM3 1DQ  
Opening Hours: Monday-Friday: 8am - 5pm  
Saturday: 8am - 1pm  
**01245 362616** • [www.adfueloils.co.uk](http://www.adfueloils.co.uk)

Products available for collection or delivery:

• Petrol	• Paraffin	• Barrel dispensers
• Diesel	• AdBlue	• Rotary pumps
• Kerosene	• LPG	• Detergent additive (additive for Apq)
• Gas Oil/Red Diesel	• 20 litre containers	
• PBO	• 205 litre containers	

**Willsher and Son Electrical Contractors**

- ELECSEA Part P registered
- All work insured and certificates issued where applicable
- No job too small, free estimates
- Based in Great Waltham
- Reliable family business
- Commercial and Domestic work

**07970 759565**  
info@willsherandson.co.uk

**Electrical Safety Register**  
ELECSEA + ECA

**L. BARTRUPT & SON LTD**  
Lavenders Farm  
Ford End  
Chelmsford  
Essex CM3 1LL



Locally grown selected potatoes (25kg bags)  
Available in season - October to April

Desiree (reds) Estima (whites) & King Edwards

Frozen Chips & Roast Potatoes (2 1/2 kg bags)

ALWAYS OUTSTANDINGLY GOOD VALUE  
Free local delivery for larger orders

**Telephone: 01245 237371**

**JCMSERVICES**  
AMENITY AND GROUNDCARE

- PADDOCK MAINTENANCE**
- GROUNDS MAINTENANCE**
- TREE MAINTENANCE**

**01245 408777**  
**07788 941 501**

[www.jcm-services.co.uk](http://www.jcm-services.co.uk)  
james@jcm-services.co.uk

Visit our website for more info

**A & W Gowers Ltd**  
Specialist Joinery Manufacturers

A local family run company with many years of experience providing bespoke joinery to trade and private customers.

Conservation, Restoration, Ordinary or Contemporary, we can manufacture and install all types of work.

Windows	Fitted Furniture
Doors	Kitchens
Conservatories	Wardrobes
Gates	Bookcases
Stairs	....and much more

For free friendly advice and estimates please contact us at  
[www.special-joinery.com](http://www.special-joinery.com)  
Howe Street, Great Waltham, Chelmsford  
**Telephone: 01245 362737**  
Now selling eco-friendly stove briquettes as well

**FELLAS hair**

Chelmsford Rd, Gt Waltham  
Chelmsford CM3 1DE

**Tel: 01245 360 024**

Brian Honeywood  
07771 534 377

**KATY'S KITCHEN**

No time to spare?  
Leave all your catering requirements to me.

- Special Dinner Parties
- Children's Parties
- Funeral Catering and more...

**01245 237444**  
**07941 388313**  
Email: [katys\\_kitchen@hotmail.com](mailto:katys_kitchen@hotmail.com)

**Computer trouble?**  
Look no further. Help is at hand!

Help with Virus removal, Wireless networking, Servicing & maintenance, Software installation, Laptop & Desktop repairs, Hardware upgrades...

We offer FREE advice, seven days a week!  
Give us a call to see how we can help you.

Engineer: 07701 065253 Office: 0800 133 7514  
Email us here: [support@generalgeek.co.uk](mailto:support@generalgeek.co.uk)  
or visit our website: [www.generalgeek.co.uk](http://www.generalgeek.co.uk)

**GENERAL GEEK**  
Your IT saviour for home and business!

**Wood Automotive**

MOT's, Vehicle Servicing  
Tyres, Vehicle Diagnostics  
Air Conditioning Repair  
Clutches, Welding  
Free Local Collection

"We look forward to seeing you and your car"  
Neil and Sarah

Unit 1 Walthambury Farm  
Pleshey Road, Great Waltham  
CM3 1AZ  
[www.woodautomotive.co.uk](http://www.woodautomotive.co.uk)  
01245 361180

**DJS Tiling Contracts**

Darryl James Smith  
Professional Wall & Floor Tiler

Ceramics, Porcelain, Mosaic and Natural Stone

4a Barrack Lane  
Gt Waltham, Chelmsford  
07977729419  
[DJSTilingContracts@mail.com](mailto:DJSTilingContracts@mail.com)

**GOOBY**  
Complete Building Service  
53 Cherry Garden Road, Great Waltham, CM3 1DH

We specialise in  
Extensions and Conversions  
Complete Renovations  
Driveways and Patios  
Complete Bathroom and Kitchen Service

We are a fully insured, family run business, who pride ourselves in giving our customers our full commitment.

For free estimates and advice contact:

**Tel: 01245 362205**  
**Mobile: 07958 150466**  
[goobybuild@aol.com](mailto:goobybuild@aol.com)  
[www.goobybuild.co.uk](http://www.goobybuild.co.uk)

Treating your pets as our own

**MILLENNIUM VETERINARY PRACTICE**  
Independent Practice, Est. 1966

- Full surgical & hospital facilities
- Separate cat and dog wards
- Qualified registered nursing staff
- 24 hour emergency service
- On site MRI scanning
- Large surgery car park
- Early and late appointments

Millennium Way Braintree Essex CM7 3GX  
Also at: 30 West Street Coggeshall Essex CO6 1NS Tel: 01376 56166

**Telephone: 01376 325511**  
[www.millenniumvets.co.uk](http://www.millenniumvets.co.uk)

**DRISCOLL CLEANING SERVICES**



**Window Cleaner**

**01245 360540**


**MICHAEL C DUKE**

Central Heating & Plumbing Engineer

**Tel: 01245 362348**  
**Mob: 07889 571674**  
[seduke21@gmail.com](mailto:seduke21@gmail.com)

20 Manor Crescent  
Little Waltham,  
CM3 3PD

**Massage Works**  
Ease Your Pain



Kim Bernie  
Massage Therapist

Manipulation, kinesio taping, holistic, sports/deep tissue, hot stone, bamboo pregnancy massage, facial

Phone to book or for latest special offer  
**07769 790784**  
**07951 887372**  
[www.massageworksessex.co.uk](http://www.massageworksessex.co.uk)  
88 High Street, Gt Dunmow, CM6 1AP

**Up, Up and Away Pre-School**



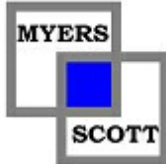
Hulton Hall, South Street, Great Waltham

- OFSTED inspected to accept LEA funding for the over 3s
- Morning and afternoon sessions available from 2 years to school age
- Lunch time Clubs available
- Secure Playground & Garden
- Bump, Baby & toddler group (Wednesday 1.15-2.45pm)

Contact  
**07501 313321**  
[www.upupawaypreschool.co.uk](http://www.upupawaypreschool.co.uk)

Portable  
Appliance  
Testing

www.myersscott.co.uk



Seamless 'walk-through' wireless networks for homes and businesses

Website design, build and maintain services.  
Wordpress specialists.

Myers Scott Ltd  
Tel: 01245 362197  
Established 2004

Technology support.  
Networks, PC and Laptop repairs and servicing for homes and business.  
Microsoft and Apple systems supported.

**Cammass Hall**  
Fruit Farm \* Tea Barn \* Farm Shop

*A great day out for all the family!*

- Pick-your-own & freshly ready-picked
- Children's play area & tea barn
- Fresh coffee, cakes & great homemade food
- Seasonal farm shop

The highest quality produce at competitive prices in beautiful country surroundings

Hatfield Broad Oak 01279 718777 www.chff.co.uk  
Postcode for SatNav: CM22 1YF

**THIS CHRISTMAS**

GALVIN  
**GREEN MAN**  
HOWE ST

*Our Place,  
Your  
Christmas*

December Set Menu  
Large group bookings  
Host Your Roast Sundays  
Christmas Eve Roast Menu  
Christmas Day Menu  
Boxing Day Menu

More info & Bookings  
01245 408 820 - [betty@galvinpubco.com](mailto:betty@galvinpubco.com)  
[www.galvingreenman.com](http://www.galvingreenman.com)

**Great Waltham British Legion**

**Events in October**

**Grand Opening of New Bar**  
Saturday 14<sup>th</sup> October - 1.00pm to 11.00pm  
After years of fundraising we are ready to unveil our new bar. The Mayor will be cutting the ribbon at 1pm and we have live music and fun all day and night!

**Scary Movie Night**  
Friday 27<sup>th</sup> October - 7.00pm  
Free entry. Come on down for a scary movie night, dress in your PJs and grab some popcorn and sweets which will be available to purchase. Adults only.

**Family Halloween Party**  
Saturday 28<sup>th</sup> October - 7.00pm  
All children and adult members FREE. £2 non-members. There are games to be played, prizes to be won, face painting, costume competitions, food and drink! There is no better way to enjoy Halloween.

**Trick or Treating Pitstop**  
Tuesday 31<sup>st</sup> October - 6.00pm to 8.00pm  
Stop at the legion after your trick or treating. Grab a hot dog and drink with your friends before eating all your goodies.

[Gt.WalthamRoyalBritishLegion](https://www.facebook.com/Gt.WalthamRoyalBritishLegion)  
 [greatwalthamlegion@gmail.com](mailto:greatwalthamlegion@gmail.com)

### Pets Service



On Sunday 10<sup>th</sup> September, a lot of dogs, one cat and two bats came along to the churchyard, bringing their well-behaved owners with them. They had come to our annual Pets Service

which, this year, welcomed Emma England, a volunteer from the **Essex Bat Group**, who gave us a very interesting talk on bats, before showing us a couple of tiny ones that she had brought. Thank you to everyone who came, we raised £58.73 for their charity!

### Harvest Service



Our next Family Service will be for Harvest and we are hoping to welcome another guest, this time a volunteer from the **Chelmsford Foodbank**. We will be collecting items for them, so please bring along with you what you can from the following list: tins of soup, tinned potatoes, ready-made custard, tea bags, tinned rice puddings, packets of mashed potato, toothpaste, shaving cream, washing up liquid (they currently have sufficient stock of baked beans, pasta and sugar). **Come and help us support local people who are in need!**

Thank you in advance and we hope to see many of you on **Sunday 8<sup>th</sup> October at 11am in Great Waltham church.**

### HELP NEEDED WITH OUR LOVELY CHURCH YARD

Firstly thank you to those kind villagers who came and helped recently to start the autumn tidy up of the Ford End Church Yard. Your hard work was appreciated

Please does any one fancy going on a rota to help throughout the year to keep it tidy?

There is a small team at the moment.

Are you able to offer 2 or 3 hours a month ?

It would not mean a heavy commitment just when you have time to spare.

Roger Bearman organises this and would really like to hear from of few more villagers please.

Even if you can only help occasionally this would be great.

All tools are provided just need gloves and sturdy shoes.

Please ring Roger if you can help in any way. 01245 237335 or

07740 880247

Thank you so much.

## Andreas Dog Walking Adventures

Looking for someone to walk your dog?

Or maybe just a pop in visit, whether it's to feed your dog, medication, let out or just some TLC.

Dog walking service in and around the Chelmsford area available.

Fully Insured, DBS Checked  
Narps U.K. Registered

Please call for further information:

**07734 394408**

Or find me on Facebook:  
Andrea's Dog Walking Service

## Great Waltham FRIENDSHIP CLUB

In July, members enjoyed hearing from John Andrews, local artist, about how he became interested in painting and how he got started. Instructions were given on drawing people, faces and derelict places. Members then had a dabble themselves with some amazing results from two or three of them.

The August meeting took everyone to the seaside. Well, actually the seaside came to the Legion with a quiz on seaside towns, sticks of rock, ice cream and a good old 'end of the pier' sing-song.

In September the Club held a fund-raising auction which is always a lot of fun and a chance to bag some bargains and gifts.

**In October we have the Hooters versus the Clangers for a musical quiz.**

## News from Great Waltham C of E VC Primary School

Welcome back to another school year. We hope all the Parish News readers had a good summer.

Our new children in Early Years Foundation Stage (EYFS) have completed their first few weeks in school and have settled really well – we have 27 in the class this year – they certainly look happy enough in the photograph!



This year Mrs Mayell and Mrs Moore will take our EYFS class. We welcome two new teachers to the school, Mr Brady, the teacher of Class Antarctica (Y1/2) and Mrs Sedman, the teacher of Class North

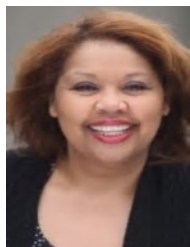
America (Y5/6). All the remaining teachers have moved year groups this year; Mrs Paugh our Deputy-Head is with Class Africa (Y2), Ms Lovell with Class Europe (Y3/4) and Mrs Elmes with Class Asia (Y4/5).

In our Collective Worship time we have launched our Life Long Value for the half-term, Aspiration, looking at examples of what this might look at in school and discussing the Creation Story and the aspiration God had for the world.

As well as lessons, the children at Great Waltham School have lots of opportunities to learn through extra-curricular clubs. This year we have: football for KS1 and KS2, netball, tag-rugby, film club, games club, choir, homework club, rugby tots for KS1, computing for Y2-6, a sports development club, recorders, cross country and a ukulele club!

In KS1, the children's topic is Toys – certainly lots to learn about there! In KS2 the children are learning about the Victorians, a real hands on topic. They will visit the Victorian Museum in Braintree at the end of the month, we can add a photo in the next edition of the Parish News.

## DO YOU LOVE SINGING?



Deborah Aloba B Mus

Would **YOU** or **YOUR** child like to improve your singing voices?

Would **YOU** like to sort out teaching issues

Do you need to brush up **YOUR** vocal technique?

Are **YOU** or **YOUR** child preparing for auditions?

Do **YOUR** children need support with GSCE or A level music exams?

With over 20 years' experience as a Classical Singer and Singing Teacher, I believe in teaching you and/or your child to develop your singing voice to its full potential in a fun and supportive manner.

For a free 20 mins consultation, please call me on 07964 805397.

For further information about prices and me please go to [www.deborahaloba.com](http://www.deborahaloba.com) and/or <https://www.facebook.com/teachingsingers/>

## LITTLE WALTHAM GARDENING CLUB

Margaret Williams chairperson, welcomed members to the first meeting of the Club's Winter programme.

Deb Hart gave an interesting and informative presentation on all the aspects of willow weaving.

The audience learned about the many types of willow that are used in willow weaving and how it is cut and prepared for sale. Deb used a PowerPoint presentation to illustrate the wide range of ways in which willow was used in the past, from vegetable baskets and eel traps to the support of trenches in World War 1. She included a number of photographs of her own work which displayed her amazing talent. Besides many woven garden ornaments Deb has made long garden fences, living willow tunnels and even a maze in the shape of a strawberry for a local jam factory. The RHS, National Trust and English Heritage are among her customers.

The audience had a chance to watch a willow artist in action as Deb made a 6 foot high willow obelisk which she donated to the raffle. The lucky winner was Doris Brown

The next meeting will be on **Wednesday 4th October, 7.30pm, Little Waltham Memorial Hall**. The speaker will be Darren Lerigo who will be advising on ways to conserve water in our gardens. Visitors and new members very welcome.

For more information please phone M Williams 01245 360042

**GREAT WALTHAM PARISH  
COUNCIL**

**PARISH CLEAR UP DAY**

Saturday 30th September  
2017

Volunteers may wish to clear  
an area around their home or a  
favourite walk or join the team  
of litter pickers who will meet  
at

**The Parish Office  
(The Old Fire Station)**

Starting at 8.30am

**No Experience Needed !!!**

**Great Waltham Parish Council**

Clerk, W Adshead-Grant, Old Fire Station, Great Waltham, Essex CM3 1DF

Tel 01245 362638 clerk@greatwalthamparishcouncil.co.uk

The following is a summary extract of the Parish Council meeting of 21st August 2017. The full and approved minutes are published on the Parish Council Notice boards and at the Parish Website [www.greatwaltham.org.uk](http://www.greatwaltham.org.uk)

Attempts to formalise the location of the Talking Bench at Banbury Square have resulted in ECC declaring that both the bench and the planted area require a licence as it is Highways land. ECC are insisting that this includes 3 or 4 bollards to protect the public from the carriageway. Licence to be requested and bollard installation to be costed.

Members of the public attended to support the requirement to get the War Memorial cleaned. Quote has been obtained (£1,752 inc VAT) and work will proceed. PC will also attempt to obtain grant.

The PC received feedback from the Twinning visit 23rd to 29th July, which was very successful with 67 French guests visiting for the week. This year, the Mayor of Ceyrat also attended. Gifts were exchanged at the farewell meal and the Ceyrat Mayor presented the PC with 3 bottles of French wine. The PC have decided that these will be given to local organisations for fund raising. Contact the Chairman to make a request and they will be fairly split.

Notice has been given by CCC for the garages at the Cherry Garden Road garages area. Cllr Huggins proposed that PC approach CHP in order to form a PC/residents liaison group to facilitate some form of communications channel that will reduce the inconvenience of the build stage as much as possible. This was agreed.

The electrical tests on the Recreation Ground changing rooms has outlined the need for a number of repairs and modifications. The company that did the tests have already quoted for the remedial work. The Clerk was instructed to obtain 2 further quotes.

Mike Steel (Chairman)

The next meeting of the Parish Council will be held at Ford End Village Hall, **Monday 16th October** commencing at 7.45pm; the Public and Press are welcome to attend. The agenda will be published on the Parish website and notice boards before the meeting.

**Table Top Sale**

**Sunday 29th October**

(Note change of date given in previous Parish News)

10am-1pm

Great Waltham Village Hall

Antiques, bric-a-brac, nearly new baby and toddler goods etc

Come along and grab a bargain!

**Stuff to sell? Do you want a table?**

If so, **register by 20th October** by ringing Sue Hooper on 361867 or

emailing Joanna Steel on

[Joanna.2.steel@btinternet.com](mailto:Joanna.2.steel@btinternet.com)

£10 per table

Table-tops are limited so book soon

*Organised by the Community Network*



After years of fundraising and hard work by volunteers the Great Waltham Royal British Legion Club is proud to invite you to the grand opening of its new bar area. Cutting the ribbon at 1pm will be a very special guest and there will be live music from *The Underscores & Friends*. The Club is for the whole community so join us as we celebrate.

**Great Waltham Parish Council  
requires a  
Parish Office Cleaner**

Duties include :

1. Cleaning Parish Office / meeting room / storage room / kitchens and toilet
2. Sweeping area around the office door
3. Window cleaning.

2 hours per month @ £8.49 per hour

Interested parties to contact  
the Parish Clerk on either

[clerk@greatwalthamparishcouncil.co.uk](mailto:clerk@greatwalthamparishcouncil.co.uk)

or 01245 362638.

Thank you for all of the contributions to this edition of 'Parish News'. Please send your contributions for the next issue by email to: [articles@parish-news.co.uk](mailto:articles@parish-news.co.uk). Enquiries and advertising requests should be sent by e-mail to: [adverts@parish-news.co.uk](mailto:adverts@parish-news.co.uk) The last date for inclusion in the NOVEMBER issue is OCTOBER 19th