

Parish News

Great Waltham Ford End Howe Street Littley Green North End

July 2017

The First Inter Pub Football Tournament

In May the Great Waltham Community Network organised its first inter pub football tournament between the Green Man, Compasses, Rose and Crown, Walnut Tree and the Beehive. The event was finally won by the Beehive. It was a good day (apart from the heavy rain showers!) and hopefully we can hold a similar event next year and build on the success of this year and if nothing else we will change the position of the pitch! Thanks to all the pubs for getting teams together that made the whole thing possible and a special thank you to Grahame Gardiner who refereed all the matches.



The Beehive Pub Winners of the First Inter Pub Football Tournament



A brilliant save!

COACH TRIPS FROM GREAT WALTHAM

There are spaces on coach trips, leaving from Great Waltham village hall. Interested? You MUST book and pay by 9th JULY : email pexcell7@aol.com or ring 01245 360166.

Our Don's of Dunmow coaches are 61-seater, with air-conditioning and toilet.

CAMBRIDGE Mon 24th July

A 1½ hour guided walking tour including visit to Kings College. Spare time to shop or sightsee on your own. Adult - £25, child under 16 - £10. Depart from GW – 8.30am. Arrive back in GW – 5.15pm



LEIGH ON SEA/SOUTHEND - Tues 25th July

Morning - sightseeing at Leigh on Sea seafront. From 12, free time in Southend. For youth, the charge includes a wristband for Adventure Island. Adult - £10. Young adult inc wristband- £20, child under 16 inc wristband - £17. (We advise that children under 16 are accompanied by a responsible adult.) Depart from GW – 9.15am. Arrive back at GW – 6pm.

LONDON – Wed 26th July

Coach will drop off in central London for people to choose where they would like to go. Adult - £12, child under 16 - £5. Depart from GW – 8.45am. Leave London – 4.30pm. Arrive in GW – 6pm.



LONG MELFORD & MELFORD HALL, SUFFOLK Thurs 27th July

Morning – stroll round picturesque Long Melford. From 1pm, visit to Melford Hall, a National Trust stately home. Adult - £20, child under 16 - £10. Depart from GW – 9.15am. Arrive back in GW - 5pm.

NOTE: These trips are arranged by Great Waltham Twinning Association. Spare places are available to non-members. People coming on the trips must adhere to the coach timetable. See our facebook page - Great Waltham twinning

From the Vicarage,

As I write this last week the death toll from the Grenfell Tower tragedy has risen to 79 and it is obvious it is going to rise further with 117 people unaccounted for. As I watched with shock as the news broke I thought what if my step daughter and her new son lived up there? How would I feel? And the thought was appalling. And what about those living in similar blocks with similar cladding, built in similar ways. How are those people sleeping at night? So many people affected.

When I left university and had my first proper job in Hackney I lived in a 21 floor council tower block on the 9th floor, with families living right at the top. There were two stairwells and huge hoses that could be used in the event of a fire. It is hard to believe that in Grenfell Tower there was only one staircase, no sprinkler systems and they didn't spend money on the fire escape because there wasn't enough money. It was pathetic when you saw the fire brigades fire hoses – they looked puny. It was clear they did not have what they needed to tackle a fire on this scale.

What is heartening in the midst of this is ordinary people responding and giving what they can in terms of food, water, clothing and toiletries, giving up time and holidays to help. As well of course of the courage of firefighters and the police. In this there is hope as people show what is possible

It takes something like this tragedy to open our eyes to what is happening in our world and notice the huge inequalities. What is becoming clear as the news unfolds is the inequalities in treatment between those with money and those with little. I have heard people say I don't want to live in a society where this happens, where some people are so undervalued

And for some reading this it may seem futile that I and others am down on my knees praying at this time, praying for those who have lost so much, for those who still hope against hope that their loved ones are going to be Ok and turn up, for something good to come out of this awful tragedy, praying that this will mean that enough money is found to house people safely and well. Praying that this will help us all pull together. And our churches are open so do come in and pray or sit and think.

Rev Caroline Brown

Great Waltham and Ford End Church Services in July

Sunday 2nd July	9.30am Communion 11.00am Communion	Ford End Great Waltham
Sunday 9th July	8.00am Traditional communion 9.30am Communion 11.00am Family Service	Great Waltham Ford End Great Waltham
Sunday 16th July	9.30am Café church 11.00am Communion 11.00am Communion	Ford End Great Waltham Chignals
Sunday 23rd July	9.30 am Communion 11.00am Communion 5.00pm Evening Space	Ford End Great Waltham Great Waltham
Sunday 30th July	10.30am Joint Service with Archdeacon Elizabeth	Great Waltham

During August we are having a joint service across all 6 churches and we do not have any family services during school holidays. Come and join us!
Details in the August Parish News.

Contact: Alison Bates Parish Administrator

Tel: 07957 228467

admin@littleandgreat.org.uk

Services and Events at Blackchapel, North End JULY 2017

Sun. 2 nd	Family Worship	P Hamilton	
Wed. 5 th	Good Book Club	Schoolroom	1.20 pm
Sun. 9 th	Holy Communion (bcp)	Rev. T Pigrem	
Sun. 16 th	Holy Communion (cw)	Rev S Bazlinton	
Wed. 19 th	Good Book Club	Schoolroom	1.20 pm
	Prayer Meeting	Schoolroom	8.00 pm
Sun. 23 rd	Morning Worship	J Pratt	
Sun. 30 th	Worship at Felsted Church		11am

bcp = Book of Common Prayer; cw = Common Worship
Services start at 10.00 unless otherwise stated
Enquiries: contact P Hamilton on 01371 820095

Services & Events at Lt Waltham United Reformed Church July 2017

Contact: Rev Geoffrey Griggs 01245 471990

Services Each Sunday 10.30am

July 2nd	Cristina McClure	
July 9th	Rev Mark Meatcher	10am Messy Church All Age 6.30pm Rev Geoffrey Griggs HC
July 16th	Rev Geoffrey Griggs	
July 23rd	Rev Lorna Bantock	HC
July 30th	Charles de Lacy	

Thurs 6th July Gossip & Guzzle 11am – 1pm

Thurs 13th July Pippins Parent & Toddler Group 9.30am – 11.30am

Sat 15th July Coffee Morning in Schoolroom 10am

Sat 29th July Rambling Group meet in Car Park 10.30am

Ford End Gardening Club

On Saturday 3 June the club enjoyed a wonderful, sunny day at Bressingham Gardens in Norfolk. This garden and nursery was started by Alan Bloom, a well known plantsman and amateur steam railway enthusiast. The gardens were taken over by his son Adrian and the son in law of Adrian is now the curator. Everything looked beautiful with a variety of many wonderful plants in bloom and all so well tended.

There are three separate rail tracks with miniature trains steaming round the estate, although one does have full size carriages. There are engine sheds full of old steam trains and even a small 'Dad's Army' museum which is full of WWII memorabilia. The Victorian 'Gallopers' roundabout was very popular and is powered by a steam engine on certain dates. There really was something for everyone at the gardens.

Our annual barbecue is on Monday 10 July and will be held at the home of Sheila and Jim Sheldrake.

We have **no meeting in August but our next one is on Monday 11 September at the Village Hall, Ford End starting at 7.30** and the speaker will be John Mead who will be talking about Autumn hanging baskets and containers.



Friends in Grief

MEET ON THE 4TH MONDAY IN THE MONTH

(Except when it falls around a Bank Holiday)

Church Community Room
Great Waltham Church
6.30pm to 8.00pm



Fund Raising Lunch at Butchers Arms North End

Come and join us on Wednesday 19th July

12.00 for 12.30 start for a lovely lunch at a lovely pub.
£14.00 for a 2 course meal.

There will be a raffle

The Butchers Arm have kindly donated the first prize of £30.00 voucher for their restaurant.

To book, choose your meal and pay please ring Sheila Bearman 01245 237335

Or in Gt Waltham Church on Sundays from Elaine Emmerson and Sheila in Ford End Church

All proceeds will go to the upkeep and general funds of Gt Waltham and Ford End Churches Fund Raising Lunch at Butchers Arms North End



News from Ford End School

At the beginning of this half-term, classes 2 & 3 found out rather more than they would have liked about rain. Their topic this term is the Rainforest and they went on a visit to Tropical Wings on the wettest day of the year. Nevertheless, everybody seemed to enjoy the experience. Resilience is a big part of our curriculum here and endurance is one of our values, so the day proved good at teaching that as well as the planned for activities.

Following the SATs tests taken in May, by our year 2 and 6 pupils, we held a Mexico week. The children learned a great deal about the culture, climate, language and geography of Mexico. Class 1 learned to count in Spanish and made maracas. Classes 2 and 3 made sombreros and ponchos and the whole school learned a dance which was performed to parents on the Friday afternoon assembly.

Each class did some cooking of Mexican food and several children surprised themselves by enjoying eating it!

Congratulations to the Quilter family, who have just returned from Germany where they took part in the European Championships for Roller Hockey. Their team is now officially the 10th best in Europe!

Sadly, this will be my last entry in this magazine before I retire in July. (I think too much is going on in July to submit an article!) I have been Headteacher at Ford End School for over 11 years. It has been the best job I have ever had. Ford End School is a really wonderful place to learn and work. In many ways it is like an enormous family. With so many people working together for the benefit of the children and with such a lovely site and well-resourced building, I believe Ford End children are the luckiest in Essex!

I have appreciated the support given both to the school and me personally by so many of you. Thank you. I have often felt more at home in Ford End than where I actually live. I certainly know more people here!

My farewell assembly is at 1:30 on Friday July 21st in the school. If you have had links with the school over the last eleven years, or are an ex-pupil, and would like to attend, you would be most welcome. I would love to see you one last time.

Hazel Arnill (Headteacher)

On behalf of the Parish News we would like to thank you for all the articles you have faithfully sent each month and wish you all the best for your retirement.

Church summer fete on Saturday 22nd July 1-4pm in Great Waltham churchyard

To celebrate the beginning of the holidays, the church is putting on a summer fete!

- There will be lots of games, stone painting, tombola, Pimm's, tea/coffee & cakes.
- You will have the opportunity to climb up the tower, have a look at the bells and admire the fantastic view over the surrounding countryside.
- There will be a guided tour of the inside of the church at 2pm & 3pm.
- But more importantly...we will be parachuting bears from the top of the tower!! So put the date in your diary and come and join in the fun! ☺



Parish Directory

To advertise in the Parish News, please contact us by email on adverts@parish-news.co.uk

If it needs **PRINTING** from Stationery & Leaflets to a Bespoke Glossy Brochure **GIVE US A CALL** Fast • Efficient • to Budget



T: 01787 479479
E: info@fmlitho.co.uk
W: www.fmlitho.co.uk

CHELMSFORD PLUMBING AND HEATING LIMITED

RELIABLE FAMILY RUN BUSINESS     

BOILER SERVICES, BREAKDOWNS AND REPAIRS

NEW BOILERS AND HEATING SYSTEMS

ELECTRICAL WORK UNDERTAKEN

T: 01245 478 588
W: WWW.CPH.UK.NET



Structural Steelwork, Steel Fabrication, Gates, Railings and anything for the Garden.

Tel: 01245 237233

enquiries@plesheyforge ltd.co.uk

Unit 20, Warners Farm, Main Road, Howe Street Chelmsford, CM3 1BL
www.plesheyforge ltd.co.uk

EVERETT PAINTING
Interior - Exterior - Painting - Decorating



- Quality work
- Free Quotes
- Fully insured
- Est over 20 yrs
- Online Portfolio

MOB: 07595 534872
TEL: 01376 335831

www.everettpainting.biz

FennWright
Chartered Surveyors | Estate Agents | Property Consultants

'trusted' property experts

- > Experienced and knowledgeable in your area
- > Large applicant database with access to London buyers
- > Competitive fee structure

Call today for a **FREE** market appraisal

01245 292 100
fennwright.co.uk

Pleshey Tree Services



Tree Surgeons & Arborists

Telephone 01245 362988

Pruning & Shaping
Felling & Removal
Planning & Advice
Free quotations & advice
NPTC qualified
Council Approved
Work compliant to BS3998 & BS5837
Fully Insured
e-mail:
tomcrees@plesheytreeservices.co.uk
www.plesheytreeservices.com

Picture Proud
UNIQUE PERSONALISED GIFTS

Making memories last forever...



GIFTS & CARDS, KEEPSAKES, PICTURE FRAMING & MUCH MORE!

Unique gifts you won't find on the high street

Find us at: Warners Farm, The Courtyard, CM3 1BL
We're just off the Green Man roundabout
www.pictureproud.co.uk
01245 360317

The Rose & Crown
between Little Waltham and Great Waltham



A Great Little Pub and Restaurant with good food, and a warm and friendly atmosphere

Open All Day 

Ben and his staff will be delighted to welcome you. If you want to ensure a table is available

Telephone 01245 360359
www.roseandcrowngreatwaltham.co.uk

Walthamby Stores
Great Waltham, Essex



POST OFFICE Post Office opening times
Monday to Friday 9am to 5.30pm (open lunch hours)
Saturday 9am to 12.30pm

When visiting the Post Office, why not use the shop? You will find - Groceries, Fresh Produce, Sausages & Bacon, Newsagent, Stationery, Dry cleaning, Delicatessen, Frozen Food, Greeting Cards, Photocopying, National Lottery, Car Tax

Barrack Lane, Great Waltham
Telephone: 01245 360278

MAC CARPENTRY GENERAL BUILDERS

ALL TYPES OF HOUSEHOLD BUILDING WORK UNDERTAKEN
KITCHEN SPECIALISTS

Windows • Doors • Bathrooms • Extensions • Loft Conversions • Roofing • Stairs • And much more

ALL WORK GUARANTEED

Clean and tidy workers with least disruption in your home

FREE ESTIMATES
FRIENDLY PROFESSIONAL SERVICE

01245 362901
07500 709556
mac.carpentry@hotmail.co.uk

Bowman Carpentry & Joinery



FITTED UNITS-WARDROBES
PARTITIONING-SHELVING
FLATPACKS-SKIRTING
DOORS AND FRAMES
ARCHITRAVES-FLOORING
AND MORE.

No job too small Free quotes
Full Public Liability Insurance

07984 947531
lean@bowmanjoinery.co.uk
www.bowmanjoinery.co.uk

The Little Retreat

Hair, Nails & Beauty

142 The Street
Little Waltham
Chelmsford
Essex
CM3 3NY

01245 362870

www.thelittle-retreat.co.uk

10% off
first appointment upon presentation of this advertisement

VOTED BEST PUB IN ESSEX
Pub & Bar Awards '17

FATHER'S DAY
Sunday 18 June

Enjoy 3 courses for £25
Children's menu £9

Or 'Host Your Roast' in our family rooms from £26.5pp for 3 courses

BBQ PARTY & GIN BAR
When the sun is out - the BBQ is on!
Every Thu - Sun

More promotions & events on www.galvingreenman.com
01245 408 820



WCT BAYFORD LTD

SOLID FUEL MERCHANTS

- Coal & Smokeless Fuels
- Seasoned Logs and Kindling
- Peat & Compost
- Gas Bottles & Charcoal

Tel: 01279 723217

Colventors, Grinstead Lane,
Little Hallingbury, CM22 7QX

Go Green
landscapes

- Landscaping and Garden Design
- Horse and Stock Fencing
- Garden Design and Build Service
- Tree Surgery
- Walkways and Paths
- Turfing
- Decking and Patios
- Tree Surveying (for new builds and dangerous trees)
- Ecological Surveys

01371 821950
07710 411844
info@gogreenlandscapes.co.uk

AD FUEL OILS LTD. *your local answer!*

Commercial and general public welcome with easy access for all cars and vans.

CARDS & CASH ACCEPTED

Products available for collection or delivery

- 20 LITRE CONTAINERS
- 205 LITRE CONTAINERS
- PETROL
- DIESEL
- KEROSENE
- GAS OIL/RED DIESEL

Yard Sales from A D Fuel Oils Ltd
Banters Lane, Great Leighs, Nr Chelmsford, Essex CM3 1QX

Opening Hours: Monday-Friday: 8am-5pm, Saturday: 9am-4pm

Willsher and Son Electrical Contractors

- ELECSEA Part P registered
- All work insured and certificates issued where applicable
- No job too small, free estimates
- Based in Great Waltham
- Reliable family business
- Commercial and Domestic work

07970 759565
info@willsherandson.co.uk

Electrical Safety Register
ELECSEA + ECA

L. BARTRUPT & SON LTD
Lavenders Farm
Ford End
Chelmsford
Essex CM3 1LL

Locally grown selected potatoes (25kg bags)
Available in season - October to April

Desiree (reds) Estima (whites) & King Edwards

Frozen Chips & Roast Potatoes (2 1/2 kg bags)

ALWAYS OUTSTANDINGLY GOOD VALUE
Free local delivery for larger orders

Telephone: 01245 237371

JCMSERVICES
AMENITY AND GROUNDSCAPE

- PADDOCK MAINTENANCE**
- GROUNDS MAINTENANCE**
- TREE MAINTENANCE**

01245 408777
07788 941 501

www.jcm-services.co.uk
james@jcm-services.co.uk

Visit our website for more info

A & W Gowers Ltd
Specialist Joinery Manufacturers

A local family run company with many years of experience providing bespoke joinery to trade and private customers.

Conservation, Restoration, Ordinary or Contemporary, we can manufacture and install all types of work.

Windows	Fitted Furniture
Doors	Kitchens
Conservatories	Wardrobes
Gates	Bookcases
Stairsand much more

For free friendly advice and estimates please contact us at
www.special-joinery.com
Howe Street, Great Waltham, Chelmsford
Telephone: 01245 362737
Now selling eco-friendly stove briquettes as well

FELLAS hair

Chelmsford Rd, Gt Waltham
Chelmsford CM3 1DE

Tel: 01245 360 024

Brian Honeywood
07771 534 377

KATY'S KITCHEN

No time to spare?
Leave all your catering requirements to me.

- Special Dinner Parties
- Children's Parties
- Funeral Catering and more...

01245 237444
07941 388313
Email: katys_kitchen@hotmail.com

Computer trouble?
Look no further. Help is at hand!

Help with Virus removal, Wireless networking, Servicing & maintenance, Software installation, Laptop & Desktop repairs, Hardware upgrades...

We offer FREE advice, seven days a week!
Give us a call to see how we can help you.

Engineer: 07701 065253 Office: 0800 133 7514
Email us here: support@generalgeek.co.uk
or visit our website: www.generalgeek.co.uk

GENERAL GEEK
Your IT saviour for home and business!

Wood Automotive

MOT's, Vehicle Servicing
Tyres, Vehicle Diagnostics
Air Conditioning Repair
Clutches, Welding
Free Local Collection

"We look forward to seeing you and your car"
Neil and Sarah

Unit 1 Walthambury Farm
Pleshey Road, Great Waltham
CM3 1AZ

www.woodautomotive.co.uk
01245 361180

DJS Tiling Contracts

Darryl James Smith
Professional Wall & Floor Tiler

Ceramics, Porcelain, Mosaic and Natural Stone

4a Barrack Lane
Gt Waltham, Chelmsford
07977729419
DJSTilingContracts@mail.com

GOOBY
Complete Building Service
53 Cherry Garden Road, Great Waltham, CM3 1DH

We specialise in
Extensions and Conversions
Complete Renovations
Driveways and Patios
Complete Bathroom and Kitchen Service

We are a fully insured, family run business, who pride ourselves in giving our customers our full commitment.

For free estimates and advice contact:

Tel: 01245 362205
Mobile: 07958 150466
goobybuild@aol.com
www.goobybuild.co.uk

Treating your pets as our own

MILLENNIUM VETERINARY PRACTICE
Independent Practice, Est. 1966

- Full surgical & hospital facilities
- Separate cat and dog wards
- Qualified registered nursing staff
- 24 hour emergency service
- On site MRI scanning
- Large surgery car park
- Early and late appointments

Millennium Way Braintree Essex CM7 3GX
Also at: 30 West Street Coggeshall Essex CO6 1NS Tel: 01376 56166

Telephone: 01376 325511
www.millenniumvets.co.uk

DRISCOLL CLEANING SERVICES

Window Cleaner

01245 360540

MICHAEL C DUKE

Central Heating & Plumbing Engineer

Tel: 01245 362348
Mob: 07889 571674
seduke21@gmail.com

20 Manor Crescent
Little Waltham,
CM3 3PD

Massage Works
Ease Your Pain

Kim Bernie
Massage Therapist

Manipulation, kinesio taping, holistic, sports/deep tissue, hot stone, bamboo pregnancy massage, facial

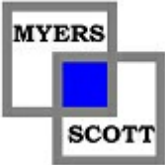
Phone to book or for latest special offer
07769 790784
07951 887372
www.massageworksessex.co.uk
88 High Street, Gt Dunmow, CM6 1AP

Up, Up and Away Pre-School

Hulton Hall, South Street, Great Waltham

- OFSTED inspected to accept LEA funding for the over 3s
- Morning and afternoon sessions available from 2 years to school age
- Lunch time Clubs available
- Secure Playground & Garden
- Bump, Baby & toddler group (Tuesday 1.30-3.00pm)

Contact
07501 313321
www.upupawaypreschool.co.uk

<p>Portable Appliance Testing</p>	<p>www.myersscott.co.uk</p>	<p>Seamless 'walk-through' wireless networks for homes and businesses</p>
		
<p>Website design, build and maintain services. Wordpress specialists.</p>	<p>Myers Scott Ltd Tel: 01245 362197 Established 2004</p>	<p>Technology support. Networks, PC and Laptop repairs and servicing for homes and business. Microsoft and Apple systems supported.</p>



Little Waltham Gardening Club June Outing

The June outing of the Little Waltham Gardening Club was to a garden at Little Myles in Stondon Massey. We had an excellent turnout with fair although rather blustery weather. Our host, Judy Cowan welcomed us and explained how the garden of three acres had taken shape over the years.

We spent a pleasant hour meandering through the garden finding sculptures, a hidden Asian garden, hornbeam pergola, ornamental vegetable patch and Judy's herb garden. Stumbling upon the beach garden and exotic jungle section was rather a surprise in deepest Essex. Should you get the chance please try and visit this lovely peaceful garden which is open on Sunday 2nd July.

At the end of our tour of the garden, Judy gave a short talk regarding her handmade herbal cosmetics which had been inspired by the creation of their herb garden. Many of us took the opportunity to purchase some of the lovely smelling creams and lotions – a nice reminder of a very special garden.

The next summer outing for the gardening Club is on July 5th when we will be visiting Peter & Marion Lawson's garden, leaving the Memorial Hall car park at 1.45pm. Lifts available.

THE HUNDRED PARISHES SOCIETY

www.hundredparishes.org.uk

Over the centuries, wealthy individuals and families have often built grand houses. In our area, many remain, albeit that few still serve as family homes. The best-known is Audley End House in the parish of Saffron Walden. Its splendid 17th-century architecture can be seen from the B1383. The house, now only one third of its size when purchased by King Charles II in 1668, is cared for today by English Heritage and should be open to the public again after July 14. Less-known, but also visible, are the following four mansions which can be found in the far corners of the Hundred Parishes.



In the northeast, in Steeple Bumpstead, Moyns Park was built around 1580.

In the southeast, Great Waltham is home to Langleys, a fine three-storey private house that has been in the same family since it was built in 1719.

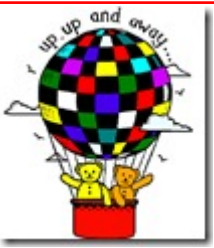
In the far southwest of the Hundred Parishes, Wareside has Fanhams Hall, an 18th-century home and in the northwest, at Aspenden, the present Aspenden Hall was built in the 19th century.



You can read a little more about each of these interesting buildings within the parish introductions on the Hundred Parishes website.

Ken McDonald, Secretary.





Up, up and Away Playgroup

This term our weekly themes have mostly been planned from the children's suggestions – Superheroes, Real life heroes, Holidays and How things work ?

We look forward to welcoming the Fire Service and Police in the next few weeks with some fun in the sun activities planned nearer to the end of term, weather permitting of course. We are also organising activities for our older children who will be leaving us to head off for 'Big School' at the end of term.

Last week we took the opportunity to take the 'Leavers' out on a day trip while the hall was closed for Polling Day to see 'Going on a Bear Hunt' at the Civic Theatre. We travelled by coach, a specific request from some of the children, and spent a fun filled hour shouting 'It's behind you', being showered by water filled super soakers and thoroughly enjoying the performance.

News from Great Waltham C of E VC Primary School

We offer our prayers to the people and especially the families of those affected by the tragic events in Manchester and London recently.

We enjoyed a very peaceful visit to the church in May where Revd. Caroline led Community Worship focussing on the Power of Prayer. The children sang hymns superbly on the day, really capturing the atmosphere well. Our Assembly themes recently have included respect and responsibility, Revd Caroline spoke to the children about the 10 Commandments and they 'signed' a prayer too. Our final half-term sees us focus on the Life Long Value of Empathy. In assembly, we spoke to the children about sharing and taking turns.

Well-done to all the adults and children who dressed as animals to support our charity for the year, the RCPCA. I am not sure who liked dressing up the best....adults or pupils!

Mrs Tinsley is retiring after 37 years at Great Waltham School, a milestone to really celebrate. We are also saying goodbye and good luck to Mrs Teal and Mrs Robertshaw.

Sports week is in late June where the children will have a circus day, hockey day, Yoga day and of course Sports Day! We will report on that in the next edition.



Y2 came 3rd at the 'Mini Games' - a variety of sporting activities. Tigers and Lions won the Y3/4 and Y5/6 Intra-House Football competitions(left). Our cricket team (above) made the finals of the Chelmsford Competition, coming 6th overall in the area.

Felsted WEA

Autumn Courses 2017

Great Glasshouses & Fantastic Follies"

with ANDREW SANKEY

9 Mondays from 25th September 2017

7.45 at Felsted URC Hall, Stebbing Road

"Revolution, Rebellion or Civil War"

with ROGER COOKE

10 Thursdays from 28th September 2017

10am at British Legion Hall, Felsted

Further Information:

[http://wea-](http://wea-essex.org.uk/branches/felsted/)

[essex.org.uk/branches/felsted/](http://wea-essex.org.uk/branches/felsted/)

Dick Frost:

richard.j.frost@btinternet.com

07909 526713



WALTHAMBURY WI

Our WI has been very active recently with a number of outings. In May a group visited Saffron Walden museum and had lunch in this delightful and historical town. A walk was arranged by a member from Barnston through rolling countryside and the group stopped at the Flitch of Bacon for coffee. Having looked at the restaurant's menu, we decided to book a lunch there for a later date. The food that we had was wonderful and many of the ingredients are sourced locally. At our June meeting Debbie Skeete gave a wonderful presentation on 'Beautiful Barbados' which was enjoyed by everyone. At the beginning of July some of us will be visiting Sheila Chapman's garden, which is a little gem and is in Chignal Road.

July is our garden meeting and it will be held on the 11th of the month at the home of Pam Crouch at the time of 6.45 for 7.0.

We have no meeting in August but our next one will be on Tuesday 12 September in the Legion Hall, Great Waltham starting at 8.0pm.

North End

Coffee Morning
in the gardens of Blackchapel
Saturday 15th July

10am - 12.30pm

Come along
meet friends and neighbours
over a cup of coffee and biscuits

Everyone Welcome

Tombola
Books
Cakes
Children's games
Plants
Raffle

Great Waltham Parish Council

Clerk, W Adshead-Grant, Old Fire Station, Great Waltham, Essex CM3 1DF

Tel 01245 362638 clerk@greatwalthamparishcouncil.co.uk

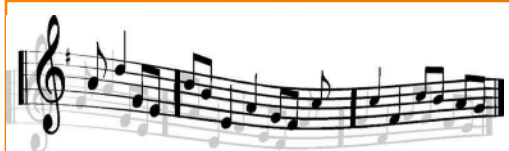
The following is a summary extract of the Annual Meeting of the Parish Council meeting of 15th May 2017. The full and approved minutes are published on the Parish Council Notice boards and at the Parish Website www.greatwaltham.org.uk. Mike Steel was re-elected as Chairman and presided over the meeting:

The Chairman duly signed the Declaration of Office and Acceptance of the Code of Conduct.

Peter Jackson was re-elected as Vice-Chairman. Committee members of F&GP, Recreation, Emergency Planning, Planning, were elected. Appointments to EALC, CC Planning Forum, VH Committee, Churchyard Committees, CN, and Twinning were appointed. (See full Minutes).

The Annual Accounts of the year ending March 2017 were adopted and the Annual Return approved.

Other matters discussed included a request to remove and re-site a water pump (locations to be reviewed), interpreting the SID results (analysis to be done).



Great Waltham Midsummer Music Festival 2017

Fantastic events still available

Saturday 1st July

Village Music Quiz at The Beehive
7.45pm

Teams of six but just turn up. For
more info phone Kevin on 361724

Saturday 8th July

Village Barn Dance & Hog Roast
Lodge Farm Barn Pleshey

Tickets Adults £20/Under 16's
£10/Under 5's Free

For more info call Michael on
360483

Saturday 8th July

The Best of them All Music
Spectacular

The Rose and Crown

12noon till late.

Jazz, Blues, Soul and many more,
Free entry

For more info call Ben on 360359



The following is a summary extract of the GW Parish Annual Assembly of 24th May 2017. The full and approved minutes are published on the Parish Council Notice boards and at the Parish Website. Matters Arising from last year's meeting were reported: - see full minutes - and included Cobbled Area near Walthambury Stores, Beehive Pub appearance, Sid Poles in Ford End, Barrack Lane - Footpath in field, South Street - Weight limit, Twenty is Plenty - around the schools.

The Chairman, Mike Steel, summarised the full report of the Annual Assembly document delivered to every household. The main theme was a proposed refurbishment of GW recreation Ground, to include a "modest" Skateboard facility, a Boules Court funded by Walthamstock, an outdoor table tennis table and re-siting the mini football pitches. A draft plan was displayed and comments invited. All the feedback was collected and will be considered by the Working Party.

Other topics covered were car parking, Ford End traffic volumes and speed, broadband and the Parish website,

Report were given by representatives of the GW and NE charities and also CN, Twinning, Talking bench, FEVH, FE Church, and FE Bowls club.

The next of the Parish Council will be held at the PC Office, **Monday 17th July** commencing at 7.45pm at Ford End Village Hall; the Public and Press are welcome to attend. The agenda will be published on the Parish website and notice boards before the meeting.

Great Waltham Parish Productions
presents
an Inspector Clueless Mystery

INCLUDES WELCOME COCKTAIL, BUFFET DINNER AND SHIPBOARD ENTERTAINMENT

MURDER IN THE MED

take the cruise of a lifetime on

SATURDAY 9 SEPTEMBER 2017

SETTING SAIL FROM GREAT WALTHAM VILLAGE HALL

CRUISE TICKETS AVAILABLE FROM AUGUST

Thank you for all of the contributions to this edition of 'Parish News'. Please send your contributions for the next issue by email to: articles@parish-news.co.uk. Enquiries and advertising requests should be sent by e-mail to: adverts@parish-news.co.uk