

Parish News

Great Waltham Ford End Howe Street Littley Green North End

JUNE 2020



A Socially Distanced Charity Run

The London Marathon might have been postponed, but four local runners showed they were still determined to do their best on the day and fundraise for their chosen charities.

Instead of pounding the streets of the capital on April 26, Lucy Johnson, Leonie Harper, Angela Holmes and Claire Honeywood each chose to run 6.5 socially distanced miles around the parish instead.

All four are still planning to do the actual marathon – currently scheduled for October 4 – and so far, Leonie and Lucy have raised £300 for Type 1 diabetes charity JDRF and Claire Honeywood is collecting for Farleigh Hospice.

To support them and their charities, please visit
<https://www.justgiving.com/fundraising/lucy-johnson50> (for Lucy and Leonie)
<https://uk.virginmoneygiving.com/angelaholmes6>
<https://www.justgiving.com/fundraising/claيرهoneywood>



The Parish News would like to add their thanks to all those workers, carers, volunteers and the NHS who are supporting our community.

Inside this edition -

Montage of VE Day
Who to ask if you need support
Local Take Away's available
Community and PC Updates

Next month we hope to return to normal home delivery and publication but we will combine July and August together.

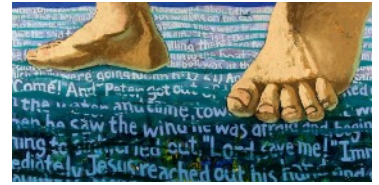
If you have any news or information you would like included please email gwparishnews@gmail.com by June 16th

You can find our online version on <https://e-voice.org.uk/greatwalthamparish/> under Parish News along with information about the Parish, Twinning Association, Community Network, Parish Productions, Events Calendar etc.

Great Waltham Parish in a Pandemic

Dear friends

I am thinking how much I miss being in church, miss hugging my children and grandchildren and seeing everyone. Like me, you must have felt many mixed emotions over these past weeks; concern, fear, a sense of being at sea and unsettled, love and blessed moments of hope. All these emotions can besiege us and sometimes overwhelm us.



We are living through a traumatic time which has felt like a rollercoaster. In fact the term 'Coronacoaster' has been coined to describe how we can feel buoyant one day and very low the next. We need to be kind to ourselves and acknowledge the difficulties and that normal ways of interacting with each other are for a season halted. It's okay not to be okay.

These are challenging times for us as individuals, society and Church. Remember the Bible was created from such experiences. It tells of people who endured great traumas yet rose to rebuild a new way and still sing praises to God, who never lets us go.

We love our churches! We miss each other and our buildings. But I'm so pleased that most of us have still been able to worship together regularly in the virtual world. However, those who have no access to the internet may be feeling very isolated and even feeling the church has stopped altogether! At home, you may find praying the psalms helpful, or reading a gospel from start to finish. There, you will find the deep springs of living water that refresh and restore us and keep us connected to the God who sustains us.

The Church is still very much open though the buildings may be closed. Local churches are offering mutual support, sharing resources and information for all parishes.

Prayer and praise never stops. Our ministry team have embraced the challenge of sustaining collective worship and prayer. Worship is Live on Facebook Sundays 10.30am, Wednesday Compline 8pm and prayers and links to other services.

Details can be provided by our church administrator Alison. If you miss joining us for any services the videos stay online so you can catch up at any time that suits you. I can recommend Compline in bed to guarantee a good nights sleep!

Another challenge is the considerable lost income while our churches are closed to keep everyone safe. This means the absence of a Collection plate, no visitors and the necessary cancellation of weddings, church funerals and church premises hire. Thank you to those who normally give to our churches via the collection plate who have generously already converted to standing orders in recognition of this difficulty. We really appreciate your thoughtfulness and generosity at this time. For details of how to donate please contact Alison.

My prayer for us all is that we will keep ourselves and each other as safe as possible during these exceptionally difficult times; that we will remember that God is our anchor and safe ground; and that we will come through this strengthened in faith and in our sense of both village and church community.

Until we can open church doors again, please join me in the worship online, and watch our websites and the Church Facebook pages. If you are not online Alison can post sermons and other materials out to you on a regular basis on request. Stay safe. *"Stay here in the city until you have been clothed with power from on high," Luke 24:49*

God bless you all and those you love Rev Sandra

Rev Sandra 07795 373832 Administrator Alison 07957 228467 Facebook page Little & Great Churches At Home
<https://www.facebook.com/Little-Great-Churches-at-Home-110993963898881/>

Services & Events at Lt Waltham United Reformed Church

Due to Corona Virus All church activities on hold until further notice

Contact: Rev Hans Stein 01371 875654 / 07763 169605

Rev Geoffry Griggs 01245 471990

Please feel free to contact either of these Ministers with any concerns or questions during these strange times.

Keep safe & well until we can be together again

While the Church is out of use renovation work is being carried out to the interior of our Sanctuary with the hope that this will all be completed before the reopening for Church service

GREAT WALTHAM CORONAVIRUS VOLUNTEER GROUP

If you are self – isolating, live in Great Waltham, Broads Green or Howe Street, and have no one to do your shopping, fetch prescriptions or do any other errands, or if you would just like a chat, we have a group of reliable and trustworthy volunteers who will be happy to help.

Ring one of the group coordinators –

Joanna Steel 01245 360918 or Wendy Proctor 01245 360483 or Phil Lilley 01245 360615.

SAFETY PRECAUTIONS

We will abide by all recommended safety precautions.

Please do NOT share this list with anyone outside the area or post it on social media, due to privacy issues.

The Great Waltham Parish VE Committee were not able to provide its planned weekend of events to celebrate the anniversary of the declaration of peace in Europe in 1945. However, we were pleased to see that our residents put up bunting and flags in their front garden or windows, and marked the day with "regulation compliant" celebrations in their gardens.



VE DAY
75TH ANNIVERSARY
A SHARED MOMENT OF CELEBRATION
8-10 MAY 2020



It is likely that the national events and our local street parties, dances, quizzes will be moved to a weekend in August/September to commemorate the 75th anniversary of VJ Day and the end of WW2
Hoping you all stay well - GWVE Committee
Mike Steel – Chair

Parish Directory

To advertise in the Parish News, please contact us by email on adverts@parish-news.co.uk

If it needs
PRINTING
from Stationery & Leaflets to a Bespoke Glossy Brochure
GIVE US A CALL
Fast • Efficient • to Budget



T: 01787 479479
E: info@fmlitho.co.uk
W: www.fmlitho.co.uk

Are you struggling to find the time to get everything done?
Is your life one constant balancing act?
Why don't you let me lighten the load
Let me be your extra pair of hands, helping you create balance in your life



Handy Little Helper

Contact Me:
Francesca Bradford
07780614747
fbradford.handylittlehelper@gmail.com
www.handylittlehelper.co.uk
Fully Insured & DBS Checked



Structural Steelwork, Steel Fabrication, Gates, Railings and anything for the garden

Tel: 01245 237233
enquiries@plesheyforge ltd.co.uk

Unit 20, Warners Farm, Main Road, Howe Street Chelmsford CM3 1BL
www.plesheyforge ltd.co.uk

Free Quotes



EVERETT PAINTING

- INTERIOR & EXTERIOR
- WALLPAPERING
- 1ST OVER 20 YRS
- FULLY INSURED
- ONLINE PORTFOLIO

TEL 07595 534872
www.everettpainting.biz

FennWright
Chartered Surveyors | Estate Agents | Property Consultants

'trusted' property experts

- > Experienced and knowledgeable in your area
- > Large applicant database with access to London buyers
- > Competitive fee structure

Call today for a FREE market appraisal

01245 292 100
fennwright.co.uk

Pleshey Tree Services



Tree Surgeons & Arborists

Telephone 01245 362988

Pruning & Shaping
Felling & Removal
Planning & Advice
Free quotations & advice
NPTC qualified
Council Approved
Work compliant to BS3998 & BS5837
Fully Insured
e-mail:
tomcrees@plesheytreeservices.co.uk
www.plesheytreeservices.com

CHELMSFORD PLUMBING AND HEATING LIMITED

RELIABLE FAMILY RUN BUSINESS

ELECSA Approved Contractor

BOILER SERVICES, BREAKDOWNS AND REPAIRS

NEW BOILERS AND HEATING SYSTEMS

ELECTRICAL WORK UNDERTAKEN

T: 01245 478 588
W: WWW.CPH.UK.NET

The Rose & Crown
between Little Waltham and Great Waltham

A Great Little Pub and Restaurant with good food, and a warm and friendly atmosphere

Open All Day

Ben and his staff will be delighted to welcome you. If you want to ensure a table is available

Telephone 01245 360359
www.roseandcrown greatwaltham.co.uk

Walthamby Stores
Great Waltham, Essex



POST OFFICE Post Office opening times
Monday to Friday 9am to 5.30pm (open lunch hours)
Saturday 9am to 12.30pm

When visiting the Post Office, why not use the shop? You will find -
Groceries, Fresh Produce, Sausages & Bacon, Newsagent, Stationery, Dry cleaning, Delicatessen, Frozen Food, Greeting Cards, Photocopying, National Lottery, Car Tax
Barrack Lane, Great Waltham
Telephone: 01245 360278

Woody's Peat
Great Baddow est. 1982

Suppliers to the home gardener of bagged:

- Somerset peat
- Growbags
- Topsoil
- Mushroom compost
- Redwood bark

Our compost and growbags are peat based and are free of contaminated garden and trade waste.

Personal service and free delivery
15 mile radius of Chelmsford
01245 473912 anytime

BOWMAN

CARPENTRY & JOINERY

FITTED WARDROBES - BESPOKE CABINETS - SKIRTING & ARCHITRAVES - FLOORING - INTERNAL DOORS - BOOKCASES - SHELVING - FLATPACKS & MORE

WWW.BOWMANJOINERY.CO.UK
07984947531
DEAN@BOWMANJOINERY.CO.UK



HJOPSON CARPENTRY

07748 732168
email:
hjopsoncarpentry@hotmail.com

Belle's Tails
of Great Waltham
Pet Grooming Spa
located in the centre of the village
1-2-1 Grooming in purpose-built parlour offering a calm and cool environment

Full grooms, Hand Stripping, quick fixes
Spa treatments

City & Guilds level 3 Diploma in Professional Dog Grooming
Canine First Aid trained/Fully insured

Weekend appointments available

07795808790
Bellestails@outlook.com
Follow us on Facebook and Instagram
[@bellestailsforgreatwaltham](https://www.facebook.com/bellestailsforgreatwaltham)

Flooring Matters


Carpets/Wood/Laminate/Vinyl/LVT & More Supplied and Fitted

Domestic & Commercial Options

We will beat any genuine quote

Andrew@flooringmatters.co.uk
07432 119220/01245 361892

YOUR LOCAL COUNTRY STORE



ernestDOE power
where you can buy with confidence

FYFIELD, ONGAR CM5 0NS
TEL: 01277 899464

AD FUEL OILS LTD.
Your local answer!

NOW SELLING LPG AND AdBlue®



Commercial and general public welcome with easy access for all cars and vans

Yard sales from A D Fuel Oils Ltd
Banters Lane, Great Leighs, Nr. Chelmsford, Essex CM3 1QX
Opening Hours: Monday-Friday: 8am - 5pm
Saturday: 8am - 1pm
01245 362616 • www.adfueloils.co.uk

Products available for collection or delivery:

• Petrol	• Paraffin	• Barrel dispensers
• Diesel	• AdBlue	• Rotary pumps
• Kerosene	• LPG	• Boiler additive (Additive for Aga's)
• Gas Oil/Red Diesel	• 20L containers	
• PBO	• 205L containers	

Old Park MEADOW
NATURAL BURIAL GROUND

Celebrate lives lived in a beautiful natural setting

Telephone **01245 806332**
www.oldparkmeadow.co.uk

Coppice Lane, North End, Chelmsford, Essex CM6 3PL



L. BARTRUPT & SON LTD
Lavenders Farm
Ford End
Chelmsford
Essex CM3 1LL



Locally grown selected potatoes (25kg bags)
Available in season - October to April
Desiree (reds) Estima (whites) & King Edwards
Frozen Chips & Roast Potatoes (2 ½ kg bags)

ALWAYS OUTSTANDINGLY GOOD VALUE
Free local delivery for larger orders
Telephone: 01245 237371

JCMSERVICES
AMENITY AND GROUNDCARE

PADDOCK MAINTENANCE

GROUNDS MAINTENANCE

TREE MAINTENANCE

01245 408777
07788 941 501

www.jcm-services.co.uk
james@jcm-services.co.uk

Visit our website for more info

A & W Gowers Ltd
Specialist Joinery Manufacturers

A local family run company with many years of experience providing bespoke joinery to trade and private customers.

Conservation, Restoration, Ordinary or Contemporary, we can manufacture and install all types of work.

Windows	Fitted Furniture
Doors	Kitchens
Conservatories	Wardrobes
Gates	Bookcases
Stairsand much more

For free friendly advice and estimates please contact us at
www.special-joinery.com
Howe Street, Great Waltham, Chelmsford
Telephone: 01245 362737
Now selling eco-friendly stove briquettes as well

FELLAS
hair

Chelmsford Rd, Gt Waltham
Chelmsford CM3 1DE
Tel: 01245 360 024
Brian Honeywood
07771 534 377

Wood Automotive

MOT's, Vehicle Servicing
Tyres, Vehicle Diagnostics
Air Conditioning Repair
Clutches, Welding
Free Local Collection

"We look forward to seeing you and your car"
Neil and Sarah

Unit 1 Walthambury Farm
Pleshey Road, Great Waltham
CM3 1AZ
www.woodautomotive.co.uk
01245 361180

Willsher and Son
Electrical Contractors

- All work insured and certificates issued where applicable
- No job too small, free estimates
- Based in Great Waltham
- Reliable family business

07970 759565
info@willsherandson.co.uk
www.willsherandson.co.uk
or find us on Facebook

Electrical Safety Register
EASA + ECA

DRISCOLL CLEANING SERVICES




Window Cleaner

01245 360540

Bespoke Blinds

We provide stunning solutions for every home, no matter your style or budget.



TIDMARSH
Established 1928

Unit 9, Station Yard Industrial Estate, Station Road, Durances, Essex, CM6 1XD
01245 297228
tids@tidmarsh.co.uk
tidmarsh.co.uk

Andrea's Dog Walking Adventures & Pet Services

Dog Walking, Pop in Visits & Taxi Service
Daily, for that Special Occasion
Or whilst you are on Holiday
Tailored Services to suit you and your pets needs.
For Further Information
Please Contact Andrea on: 07734 394408



Up up & away

Hulton Hall
South Street
Great Waltham
07501 313321
upupawaypreschool.co.uk
upupawaypreschool@gmail.com

Looking for a preschool with a large, natural outdoor space and confident, happy children?
Come and visit us!



GALVIN GREEN MAN HOWE ST.

Voted Best Pub in Essex

Bringing Galvin at Home in Essex. Our hamper includes a starter, a main and a dessert for £45 per person. The menu changes weekly and must be ordered before Wednesday at midnight.

Order via our Galvin Club Loyalty App or via phone.

Find out more
galvinrestaurants.com/Galvinathome

Howe Street,
Great Waltham, CM3 1BG
01245 408 820

Rutland Financial Ltd

Professional Mortgage Advice

01371 504030
www.rutlandfinancial.co.uk

Rutland Financial Ltd, Office M, Dutch Barn, Old Park Farm, Ford End, Chelmsford, CM3 1LN.

Your home may be repossessed if you do not keep up repayments on your mortgage. For mortgages we are paid commission, or a fee (typically £295), usually a combination of both.

STEPHENS CHIMNEY SWEEP



- Sweeping
- Stove Installations
- Fully Insured
- CCTV
- Stove Servicing
- Smoke Test
- Nest Removals
- Flexi Inner Installs
- Advice Service

Tel. 0800 112 3600
Mob. 0791 870

HETAS

www.stephenschimneysweep.co.uk

A big thank you to

Brian and Leslie Davis who over the last three years have quietly and diligently distributed the Great Waltham Parish News to all those who deliver each edition to your door.

Sadly they have decided they are unable to fulfil this role anymore but I am sure you would all like to join us in thanking them

Lincoln tate

Interiors | Design | Construction

www.lincolntatedesign.co.uk
enquiries@lincolntatedesign.co.uk
07787 164085 | 07938 108606

From the County Council



Coronavirus (COVID-19)

The coronavirus has changed the world in which we live and even when the emergency is over nothing will ever be quite the same; there will inevitably be a new normal. Whilst I know that this has been a very sad and distressing time for many of you, it has been reassuring to see the reaffirmation of the community spirit that has always existed in our towns and villages. However, it will be some time before we can all try to resume our "normal" lives again and so I shall list some of the many aspects of the arrangements that have been put in place by the County Council to get us through this difficult and challenging time.

Welfare and Volunteering

If you, or someone you know of, need help getting food, medicine and essential supplies while self-isolating, the Essex Welfare Service is offering a helping hand to those most at risk, including people who are over 70, pregnant or have underlying health issues. If you are vulnerable and don't have help from friends, family or local support, we have volunteers that are happy to help - it's easy to access via <https://www.essexwelfareservice.org.uk/support-request> On the other hand, if you know someone and wish to seek help on their behalf, do refer them <https://www.essexwelfareservice.org.uk/support-referral?>

We should all be proud of our contribution to helping stop the spread of coronavirus. However, if you're finding the current situation of social isolation very difficult, please remember you are not alone. Support to help you and anyone you know is available at <https://www.livewellcampaign.co.uk/article-categories/mental-well-being/>

If the internet is not available to you and you need help, it is also possible to call the Essex Welfare Service on 0300 303 9988

Essex County Council Services

Essex Registration Service is open, but on a restricted basis currently only offering telephone appointments for death and stillbirth registrations. And under Government restrictions, ceremonies cannot take place. If you have a ceremony or a birth or notice appointment booked in the next 4 weeks, we will be contacting you to discuss this. Please see <https://www.essex.gov.uk/changes-services/births-ceremonies-deaths> for the latest information before calling 0345 603 7632.

The County Council has closed its Country Parks, Cressing Temple Barns, Jaywick Martello Tower, Essex Record Office, and Essex Outdoors to help limit the spread of coronavirus. However, if you live locally you can still access public rights of way in each of the parks. Details can be seen at <https://ca1-exe.edcdn.com/Public-Rights-of-Way-in-Country-Parks.pdf>

Urgent provision for additional temporary mortuary space has been made at the **Chelmer Valley Park and Ride**, to cope with the unexpected rise in deaths across Essex including Southend and Thurrock. The P&R will reopen once the site is able to be returned to use which may be some months. In the meantime there will be no access to the site for the public.

The latest news updates are as ever available here: www.essex.gov.uk/news

Meanwhile, if you have any problems about these and other County Council matters please let me know on 01245 421524 or email cllr.john.aldridge@essex.gov.uk.

Fancy a Takeaway? Nearby pubs, coffee shops and restaurants open for collection or delivery (see individual websites)

The Galvin Green Man

Enjoy Michelin-starred Galvin dishes in your home.

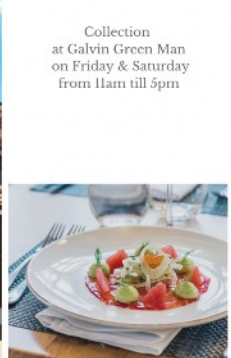
Available to order Sunday -Tuesday midnight via the Galvin Club App for collection
Friday & Saturday 11-5pm at Galvin Green Man.
Read more

<https://galvinrestaurants.com/galvin-at-home/>



GALVIN
AT HOME

Collection
at Galvin Green Man
on Friday & Saturday
from 11am till 5pm



THE HUB

The Hub will continue offering weekly treat takeaways and these will be available to view on our website www.thehubfarmshop.com or by telephoning 01245 527109 and simply ask "Whats on the menu this week"



The Hub is a great example of a small caring business right on our doorstep providing more than just food, a feeling of community, care and warmth in these difficult times.

Visit thehubfarmshop.com to find out more about The Hub.

The Stores

We will be back open on Wednesday 3rd June

Coffee Shop & Deli

Wednesday – Saturday
8.30am-3.30pm

Friday Night

5pm-8pm

Woodley's Pizza Pop up @ The Stores

Saturday Grill Night

5pm-7pm

For menus please see your Facebook & Instagram pages

Tel 01245 362649



FRIENDS OF THE COMPASSES CHARITY TAKE-AWAY

FRIDAY & SATURDAY NIGHTS
WHITBREADS BARN, CHATHAM GREEN,
CM3 3LQ

[HTTP://WWW.COMPASSESLITTLEGREEN.CO.UK/](http://www.compasseslittlegreen.co.uk/)



@THEHOPSTOCK



THE COMPASSES INN



@COMPASSESIC

Great Waltham Parish Council

Clerk, W Adshead-Grant, Great Waltham Village Hall, South Street, Great Waltham, Essex CM3 1DF

Tel 07880 717329 clerk@greatwalthamparishcouncil.co.uk

The following is a summary extract (by Mike Steel – Chair) of the Parish Council Meeting of 22nd April 2020. The full and approved minutes are published on the Parish Council Notice boards and at the Parish Website <https://www.essexinfo.net/great-waltham-parish/>

This was the first online meeting held by GWPC. Future meetings will be held in the same way, whilst the current situation continues.

The City Cllr stated that everyone should have received a City Council leaflet on the Coronavirus outbreak, including where to get help. A number of volunteer organisations have been set up in the parish and contact details circulated, but you can always contact Essex Welfare Services 0300 303 9988 <https://www.essexwelfareservice.org.uk/>. Most City Council services are operating as normal, some with changes, and very few stopped. This is a rapidly changing situation so check latest at <https://www.chelmsford.gov.uk/coronavirus/>

There was a discussion on the recent spate of vandalism around GW Village and Park. Residents are being encouraged to report to 101 or police on-line, and also to CHP ASB site if applicable.

A new agreement has been issued to all allotment holders. There has not been much feedback yet.

Update from VE Committee to be included in Parish News suggesting people put bunting up and stick to social isolation. Likely that events will move to VJ Day in August

The Parish Annual Assembly, planned for 1st June is cancelled. It was suggested that a short Chairman's report be included in the June edition of the Parish News (on-line version) including summary of year's finance.

The next Parish Council meeting will be held Monday 15th June 2020. Likely that this will be an online meeting. The Public and Press are welcome to attend. The agenda will be published on the Parish website and notice boards before the meeting and will include joining instructions (or contact the Clerk).



Great Waltham Horticultural Society

GWHS Hut is now open

to members

(if you are not already a member, you can join for the sum of £4)

March - October

Please email ianpeter.bradley@gmail.com

Orders will be left outside of the hut for collection and payment either cash or cheque through his letterbox.
Details when you email.



The hut stocks a wide range of gardening essentials, Including: Fertiliser, Bonemeal/Blood, Fish & bone, Top-dressing mixed, Lime, John Innis 1, 2 or 3, Compost (please check as it goes quickly) Feeds inc lawn feed, Peat, Sand, Fleece by the metre, Weed control, String, Rooting powder, Ties and labels, Bamboo canes, Plant pots.
(all subject to availability)

The Great Waltham Parish News is looking for a volunteer or volunteers

to receive from the printers and distribute copies of the Parish News to those who deliver.

If you would like to help or for more information please contact

Alison Bridge on 01245 360851 or
Alison Dewar on 01245
Or email gwparishnews@gmail.com

Ford End Senior Tea

Just a message to you all. I hope you are all keeping well and looking after yourselves.

I look forward to when we can all meet up again for a lovely chat cuppa and a piece of cake.

If in the meantime you would like to have a chat or need a help please phone me on 07977077945 or 01245 237335
Sheila Bearman

Thank you for all of the contributions to this edition of 'Parish News'. Please send your contributions for the next issue by email to: articles@parish-news.co.uk. Enquiries and advertising requests should be sent by e-mail to: gwparishnews@gmail.com

The last date for inclusion in the July/August issue is June 16th