

The Braxted Bulletin

MARCH 2019



VILLAGE INFORMATION

Clerks to the Parish Councils:

Great Braxted Sarah Mann Tel 01621 892821

Little Braxted Gordon Musset Tel 01376 520103

Neighbourhood Watch Coordinator:

Great and Little Braxted Mandy Chapman Email:
thebraxtedsneighbourhoodwatch@yahoo.com

Non-urgent contact for Police: 101 or 0300 333 4444

Non-urgent contact for medical concerns: 111

Water 0345 7820999, **Electricity** 0800 0294285

Responsibility for Essex Highways:

Essex County Council 0845 603 7631

Library Information:

Wickham Bishops Library

School Road, Wickham Bishops, Witham CM8 3NU Tel
0333 013 2706

Opening times

Monday 14.00 – 18.00

Wednesday 14.00 - 18.00

Saturday 09.00 – 13.00

Next Parish Councils

Great Braxted The next meeting of the Gt Braxted PC is on March 14th 2019. Changed from 7th March 8.00 p.m. – in the Pavilion
Email: parishcouncil@greatbraxted.com

Little Braxted All are held at the Braxted Bakery, and start at 7.00 p.m.

The next dates are:-

26th March, 23rd April, 14th May

All members of the public are welcome to attend

**ST NICHOLAS' LITTLE BRAXTED
CHURCH NEWS
March 2019**

SUNDAY 17th March Communion at 9 am

APCM at 12.30pm to be held at
St Bartholomew's Church, Wickham Bishops

For children's and family activities and other services see

<http://www.churchinwickhambishops.org.uk/>

or refer to Facebook for St Bartholomew's Church or Edward Bears or Messy Church

Notices

Contacts:	Priest-in-Charge	Revd. Hilary Le Sève	01621 892867
	Churchwardens	Barry Cousins	01621 891355
		Graham Wingrove	01621 891844



ALL SAINTS GREAT BRAXTED

CHURCH NEWS March 2019

It seems that Spring is coming if not here already, sunny weather and the churchyard is full of snowdrops and the daffodils will not be far behind.

We have our first wedding of the season this month. There will be at least sixteen others through this year.

Shrove Tuesday (Pancake Day!) is on 5th March then we will be in Lent. Easter is late – Easter Day is Sunday 21st April, which will be HM Queen's real 93rd birthday

The church services for this month are as follows:

SUNDAY 3rd March Family service at 11.15 am
WEDNESDAY 6th March ASH WEDNESDAY Benefice communion at
Messing Church at 8pm
SUNDAY 10th March Communion 1 at 11.15 am
SUNDAY 17th March Matins (Morning Service) at 11.15 am
FRIDAY 23rd March **WEDDING at 1pm**
SUNDAY 24th March Communion 1 at 11.15 am
SUNDAY 31st March **MOTHERING SUNDAY** Family Service at 11.15 am

Contacts:

Rector	Revd. Anne-Marie Renshaw	01 621 815260
Churchwardens	Mike Puttick	01621 816830
	Toni Curson	01621 819149
Admin. Assistant	Christine Hall [office hours]	01621 819557

Gt. Braxted Parish Council

District and Parish Council Elections.

Elections for District and Parish Councils will be held on Thursday May 2nd 2019.

Notices will be placed in the noticeboard on March 15th 2019.

Nomination papers are available from Maldon District Council from 4th March 2019.

Completed forms must be returned by April 3rd 2019.

If any resident is interested in joining the Parish Council and would like to know more contact the Clerk Sarah Mann or speak to a Councillor.

Sarah Mann Clerk

Post Box Relocation.

The Post Office have moved the post box to Bung Row near the village sign. It was moved from private land and Bung Row was chosen as the best spot.

Pavilion Management Committee.



Pavilion Social Afternoon
Tuesday 26th March 2019
1.30pm-5pm.



Come along and meet your neighbours-have a cup of tea and cake and take part in board games, quizzes, cards etc or just chat. See noticeboard for more details or contact Sarah Mann Secretary 01621 892821. Depending on interest this may become a regular event.

Dog Fouling. 🐞

A reminder for all dog owners to use the dog bins provided and not the litter bins and plastic dog bags should not be thrown in the undergrowth.

WELCOME TO SPRING

The front cover may seem to be a collection of random pictures this month, but in fact is a clue/reminder to some specific dates for your diary as follows, Tuesday 5th March Shrove Tuesday (pancake day), Sunday 17th March St Patrick's day, Mother's day Sunday 31st March and daylight saving time change, so your clocks should spring forward by 1 hour.

The birthstone for March is aquamarine. The birth flower is the daffodil.

WELCOME TO BRAXTED

Welcome to ... If you have new neighbours that you would like to add to this article next month, please let me know.

The Braxted Bulletin is published to help everyone feel part of the community, recognizing people's achievements, the value of community activity, and to encourage support of local businesses. Please contribute by sending us your good news, suggestions and details of any events

Cut off for next month's Bulletin – approx. 20th day of the previous month

Lee.kane01@hotmail.com

BRAXTED RESIDENTS FACEBOOK GROUPS

Those interested, in local updates, including stories found in the Braxted bulletin and other local issues reported by your neighbours, please feel free to join the following private Facebook groups, by either searching for 'Great Braxted Residents' (current members total 63), or using the below link for Great Braxted and requesting access, or requesting to join 'Little Braxted' group (current members total 49) via Facebook message to Ali Aldi. <https://www.facebook.com/groups/1637978482902828/>

MONTHLY COMMUNITY COFFEE MORNING *free Tea & cake

Held the first Tuesday of every month, from 10am to noon at the Braxted bakery. Lots of information booklets available covering avoiding scams, safety advice, health etc When possible the local police attend and it is a great chance to meet other people from the villages. *Tea & cake for Braxted residents

Advertising Prices per monthly edition

Full page £30 Half page £15 Quarter page £10

Advert enquiries email: Maria.armstrong2@btinternet.com

NB The views expressed in this magazine are not necessarily those of the editor, nor can the editor guarantee the credentials or performance of any of the advertisers within this publication.

A stylized logo consisting of the letters 'S' and 'H' intertwined in a blue, cursive font.

SIMON HOLDING

EST. 1997

01621 859 484
07990 972 676



UPHOLSTERY AND CURTAINS

TRADITIONAL AND MODERN UPHOLSTERY CURTAINS AND BLINDS
BESPOKE FURNITURE CONSERVATORY BLINDS JACARANDA RUGS
BESPOKE LEATHER FRENCH CLUB CHAIRS VOYAGE MAISON RETAILER
FABRICS AND WALLPAPER

www.simonholding.co.uk Unit F, Stock Chase, Heybridge, Maldon, Essex CM9 4AA



Supporting independent living for people over 65. How can a Community Agent help?

- **Community Agents** are a free service provided by a voluntary sector partnership funded by Essex County Council
- **Healthy living and Wellbeing** – information and advice on meals services and falls prevention.
- **Understanding the Care System, and Carers Support** - for people contemplating assistance or care in the home or people who are in a caring role - helping them to access practical support, information, advice and peer support
- **Individual resilience** - by providing advice and support that ensures correct entitlement to benefits such as **Blue Badge**; **Attendance Allowance** and **Pension Credit**.

• To request a home visit please call 08009775858 or 01376574341

www.essexrcc.org.uk/Our_work_with_Communities/Community_Agents_Essex.aspx



WICKHAM BISHOPS JAZZ CLUB presents The Alan Gresty Jazz Band

Saturday 9th March

with special guest from USA Pete Neighbour on Clarinet

at Wickham Bishops Village Hall, CM8 3JZ

(Doors open 6.30 for 7.30 Start until 10.45 p.m.)

Tickets £12.50 per head

Proceeds from the event go to Beacon Hill Sports Association (Charity No. 232995).

No Bar - Bring your own drinks and nibbles

Contact Pete [email:wickhambishopsjazzclub@gmail.com](mailto:wickhambishopsjazzclub@gmail.com)/Tel: 07548775777"

Braxted Coffee with Cops raises the alarm over fly-tipping

Police have praised residents for stepping forward with their concerns after a positive step was taken to tackle crime.

A recent Coffee with Cops event in the district saw a member of the public give information to officers about a case of fly-tipping in Sextons Lane near Braxted Park Road, Braxted.

In response, officers have handed out contact details for Community Protection Officers in Maldon who would be able to deal with any issues.

Pilot scheme to give additional funds to Essex parishes to cut grass and repair footpaths.

Under the plans Essex County Council will hand responsibility for some highway services to the councils for 12 months, beginning on March 1.

County Hall described it as a "shift in power towards local communities".

There are just under 300 town and parish councils within Essex and their powers include maintaining allotments and open spaces, crime prevention and providing recreation facilities.

Together with the Essex Association of Local Councils (EALC), ECC is working with 18 parish and town councils to pilot a shift in power towards local communities.

Under the plans Essex County Council will hand responsibility for some highway services to the councils for 12 months, beginning on March 1.

County Hall described it as a "shift in power towards local communities".

There are just under 300 town and parish councils within Essex and their powers include maintaining allotments and open spaces, crime prevention and providing recreation facilities.

Great Braxted Pop-up Meal

February 15th saw a well attended and sold out pop-up meal, at the Great Braxted Pavilion, where everyone who attended reported that they had a great time, thanks to the organisers Bee Goody and Caroline Mitchell.

Do you have a Redpoll on your Bird Feeder



This is one of five rare birds to look out for this spring.

This tiny finch is only slightly bigger than a blue tit. It is streaky and brown with patches of red on its head and sometimes on its breast.

They like to hang upside down to feed in trees. They eat seeds, particularly of birch and alder, plus plants like willow herb and sorrel, but they also visit bird feeders



Local company shortlisted for Homegrown food award

Thursday Cottage, which is based in Tiptree, is one of six finalists across the region competing in the East of England Co-op's Producer of the Year award

The award, which is now in its seventh year, celebrates food and drink producers who source their ingredients locally.

Thursday Cottage says it prides itself on "traditional values and traditional methods" as well as packaging that hasn't changed in 55 years.

The fruit for the jams is handpicked just 400 metres from their production room and all fruit is hand-checked and all jars are hand-poured.



**BRAXTED
CHIMNEY
SWEEP**

- ✓ NACS member
- ✓ Fully insured
- ✓ CCTV inspections
- ✓ Birds nest removal
- ✓ Fire brick replacements
- ✓ Carbon monoxide alarms supplied



Tel: 01621 892400
Mob: 07777 602607
braxtedchimneysweep@outlook.com

**R CLARK
LANDSCAPES**



GARDEN CARE
18 years' experience

Patios, Decking, Fencing, Brickwork, Turfing,
Tree Surgery, Pergolas, Sleepers.

Spraying – All types

Turf Maintenance – Renovation
(Spring – Autumn)

Pruning, Tree Planting,
Garden Maintenance

Fully insured

Please call for FREE ESTIMATE

07914 712453

School News

Year 6 Ancient Greek Day

Monday 14th January saw Year 6 enjoy an Ancient Greek Day. During the course of the day, the children had the pleasure of experiencing a day in the life of an ancient Athenian. The wide range of super activities completed consisted of: making mosaic imagery, soap carving, charm bracelet making and creating many more extraordinary artefacts, all while in fabulous costumes! At the end of the day, the children enjoyed going to the ancient Greek theatre. It was in fact just the children fully immersed in becoming the actors. They delivered delightful productions on the stage of the school hall. Whilst watching their peers perform, Year 6 was able to enjoy some ancient Greek delicacies such as honey cake and feta cheese with olives. Of course all of this would not be possible without the amazing staff that organised and played important roles. Thank you to teachers, teaching assistants and parent helpers as well as the fabulous History Off The Page company. Written by India and Jessica — Year 6

Year 5/6 Tag Rugby Tournament - 7th February 2019

2nd Place: On a bitterly cold and extremely windy February day, our newly formed Tag Rugby team competed in the Colchester and Blackwater School Sport Partnership tournament at Mersea Rugby Club. There were 12 teams competing - we played 5 matches, winning all but one match which placed us in the semi-finals - we played Birch who were said to be the best in the competition but



remarkably we beat them in a close match. In the final we played against Kelvedon but lost 3-0 – giving us runner up position. This was such a good and unexpected result considering our team consisted of three Year 4's in this year 5/6 tournament! One of the Mersea Rugby coaches who refereed several of our matches told Annie she was the best support player he'd seen this year including in the International matches this past weekend!

Dates for the Diary

Saturday 11th May 2019 – Sponsored Walk

Friday 12th July 2019 – 5.00 – 8.00pm - Summer Fete

Friday 27th September 2019 – Golf Day

Please contact the school office for further details



Power cut? Would you, or someone you know need extra support?



Who are UK Power Networks?

We own and maintain electricity cables and lines across London, the South East and East of England, making sure that homes and businesses have power.

We deliver your electricity locally, regardless of which company you pay your energy bill to.

We understand that power cuts can be worrying, especially if you or someone you look after needs electricity for medical reasons, are unwell, or have specific communication needs.

Our Priority Services Register is FREE to join and offers support:

- Information about our services translated, in large print, audio, braille or Easy Read
- A priority number that you can call 24 hours a day
- A dedicated specialist team who will contact you by phone or text message, to keep you updated during a power cut
- Tailored support if you need this such as home visits, hot meals, advice and keeping your friends and relatives updated

To register, please visit:

www.ukpowernetworks.co.uk/priority

email: psr@ukpowernetworks.co.uk

or call: 0800 169 9970

using your textphone dial:

18001 0800 31 63 105



 Search UK Power Networks



The ones that got away

I took this picture from my garden of some happy looking Pheasants in the 2nd week of Feb', as these survived the game bird & water fowl hunting season, that ended on 1st of February.



Essex little owls near Maldon

story courtesy of BBC news

A family of five little owls has captured the heart of a wildlife cameraman in Essex. Russell Savory has been observing an adult male for eight years at its home in a derelict barn near Maldon.

The male's first partner died, but with a new mate they have recently produced three chicks.

"I love their facial expressions," Mr Savory said.

There are 5,700 little owl breeding pairs in the UK according to the RSPB, but Breeding Bird Survey data suggests their numbers are declining.

A little owl's size is 21-23cm.



Game to fight hunger



The Country Food Trust (CFT) is a “not for profit” charity, set up in 2015 to bring a solution to known issues, by feeding as many people in food poverty as it can, using the protein that comes from gamebirds.

Three years on and with the support of the shooting community and every shooting organisation, the CFT has given meals to over 130,000 people. It wants to expand its effort with support of keepers and estates to reach the target of providing one million meals for people in need over the next five years.

The aspiration of The Country Food Trust is that the CFT has nationwide appeal and reach, and so will appoint County Ambassadors around the country.


An ambassador is someone who runs a shoot, is active in a local syndicate, or shoots a significant number of days in their own region or nationally. As a sign of its intent, the CFT has asked one of its senior trustees, Duncan Clark of Braxted Park, to look after the ambassadors’ programme.

If you have any questions then please contact The Country Food Trust at enquiries@thecountryfoodtrust.org



**MAC
Digital**

ALL TYPES OF AERIAL & SATELLITE INSTALLATIONS



**SKY | FREESAT
FREEVIEW
FM | REPAIRS**

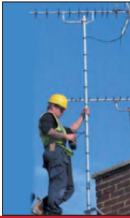
Working in conjunction
with Malden Council

**SKY LINKS TO ALL ROOMS
IN YOUR HOUSE**

TV WALL MOUNTING - CCTV

We are happy to call evenings or weekends to survey
your property for a **FREE** estimate without obligation

or more info please call MAC
Digital on:
07565 340352
01621 770098
email: macdigitalesssex@yahoo.co.uk



www.macdigitalesssex.co.uk

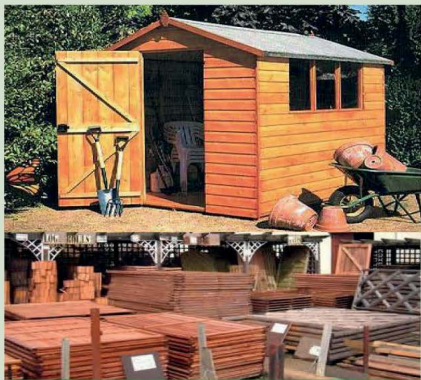
PET OF THE MONTH

This is Charlie, our 4 year old Shih-Poo, he is a friendly, outgoing, and sociable dog. He is generally confident, unless he hears gunshots, and then he wants to head straight for home!

I have added our dog, to start the ball rolling as they say, so if you believe your pet is the most adorable, one of a kind, or even unusual pet, please forward your favourite picture, and a few descriptive words to the editor Lee.kane01@hotmail.com, and the best will be done to include this in The Bulletin, in the months to come.



Tom's Farm Shop



SHEDS MADE TO MEASURE

Heavy duty 10' x 8' - **£619**

Summer Houses made to your own design

GATES MADE TO MEASURE

Prices starting from **£39**

Driveway gates priced on application

FENCING POSTS

Example 8' x 3' x 3' **£7.70**

TRELLIS

Prices from **£7.20**

Most sizes in stock


**ALL YOUR
GARDEN
NEEDS
UNDER ONE
ROOF**

Larchlap panels 6'x6 only **£21.95**. All sizes available

DECKING  TIMBER  LOG ROLLS  PICKETS POST & RAIL
PLANTERS  CHICKEN RUNS  RABBIT RUNS
GARDEN FURNITURE  HARDWARE & MUCH, MUCH MORE!

Maldon Road, Tiptree, Essex, Tel: 01621 891081
www.tomsfarmshop.co.uk



STOVES
of DISTINCTION

By Matthew Ruffle

HETAS Qualified Installers of Wood Burning/Multi Fuel Stoves
NACS Qualified Chimney Sweep Service
Chimney Cowlings, Caps and Pots Supplied and Installed
Chimney Lining, Insulation and Stack Repairs
Inglenook and Fireplace Restorations
CCTV Internal Inspections

Fully Insured and Certified.
Registered Upper Tier Waste Carrier.

Contact Matthew Ruffle
01621 810711 / 07938439253
matthewrufflechimneysweep@aol.co.uk



onpoint

Designer looks at high street prices



Upstairs at The Emporium,
High Street, Maldon

New styles for real women – Sizes 10-22

www.onpoint.com

Perrywoods Garden Centre in UK's top 3 at national awards



A FAMILY-RUN garden centre is celebrating an incredible success after scooping up multiple awards at a national conference.

Perrywood Garden Centre, in Tiptree, picked up five awards at the National Garden Centre Association Conference held in Luton this month.

The annual conference saw the centre named third in the Garden Centre Association's top 100 UK league table, making it one of only ten garden centres of excellence in the UK and the best in the south of England.

It is a significant achievement for the centre, after being named fourth in last year's awards. Rankings depend on factors including customer service, merchandising, creativity and innovation, quality and range of products.



30,000 furious residents sign petitions against library closures

There was countywide representation at protests held recently in Chelmsford. *see picture left taken on Saturday 9th Feb'*



Yoga Moments

Hatha Yoga class

MONDAY 9:30AM
WITHAM BRITISH LEGION HALL

MONDAY 7PM
WITHAM METHODIST CHURCH

WEDNESDAY 9:30AM
MALDON MAYPOLE HEALTH

PRIVATE 1:1 CLASSES - CHILDREN'S YOGA COMING SOON

Yoga can bring many benefits to your life

- Build strength and flexibility
- Ease stress
- Enables restful sleep
- Helps with many health issues

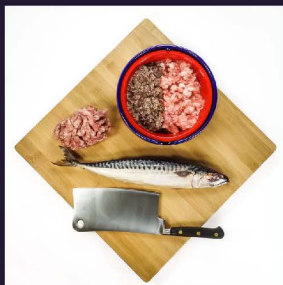
Call Mine Hilmi on 07811 203 981
or email mineyogamoments@gmail.com
to book your place




WWW.YOGA-MOMENTS.CO.UK

TONE YOUR BODY, RELAX YOUR MIND

Gourmet Hand Made Raw Dog Meals



FREE
Next Day
Delivery

100%
Meat
nothing added

RAW MADE
SIMPLE

DEFRA Approved
13/373/8103 ABP/PTF

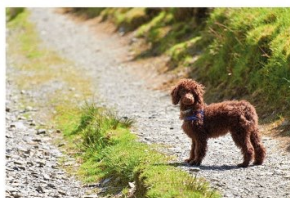
www.rawmadesimple.co.uk

Raw Made Simple Ltd. Unit 1 Little Mountains Farm, Essex, CM9 8BY. 0330 999 7800

VILLAGE ACTIVITIES IN BRAXTED PAVILION

Lettings Officer & Key Holder: Yvonne Hunter 892034

- Monday** **Maldon Art Group** 9am-4pm, every second Monday of the Month.
Gill Cameron 01621 857602
- Monday** **Metafit [keep fit]** 7pm – 9pm. *Lisa Brand 01621 893720*
- Tuesday** **Whist Club**, 7pm every 1st & 3rd Tuesday of the month from October to April. *Roy Copsey 01621 892697*
- Tuesday** **Choir**, every last Tuesday of the month. *Emma Jackson 07852988502*
- Wednesday** **Pilates Class** 4:15pm. *Maureen Barnes 07718741362*
- Thurs& Sat** **Dog Club** Thursday 11:30am-1:30pm, 1st Saturday of the month (Excl Jan), from 10am. *Diane Sawford 01621 893664*
- Friday** **Braxted Art Club** 12pm-5pm. *David Joyce 01621 891241*
- Friday** **Pop-Up Pub**, bring drinks & nibbles, all welcome, £1 a head, *every second Friday evening of the month from April-December*
- Misc** **Parish Council and Pavilion Committee** Meetings (details in Bulletin)
Home school intermittently some weekday Wednesday's



If you FIND a dog . . .

- Look around the area and see if there is anyone obviously looking for their lost pet.
- Report to the local council (dog warden); it is the law and they may already have had the dog reported as missing. You can find details of your local dog warden on-line here: www.gov.uk/report-stray-dog
- If you can, take the dog to a local vets for them to scan for a chip. In most cases they will then be able to call the owner if dog is chipped, or call the local dog warden to collect if not.
- In Scotland you should also report to the police.
- Also check in the 'Lost' section of the DogLost website to see if this dog has been reported as missing. www.doglost.co.uk/dog-search.php?status=Lost
- Many of our volunteers in the area do have scanners so may be able to come out and scan the dog for you. You can ask on local DogLost pages if anyone can help or call our head office for more information.
- Register the dog on the DogLost website: www.doglost.co.uk and share on Social Media such as Facebook / Twitter, local DogLost pages and groups.
- You can also print posters from this dog's page using the **View Poster** button and put up around the area that he / she was found. Don't forget to laminate in case it rains.
- If you can, put Posters in local shops, pubs, garages, supermarkets; everywhere that there are a lot of people. Spread the word to try to find the owners . . .

Thank you for caring!!!



*Stolen & Missing
Pets Alliance*

Helpline **0844 800 3220** or **01633 673 859**

e-mail: admin@doglost.co.uk

