



St. Margaret's  
Preparatory School

Let's begin  
a new story,  
together...

We are an independent  
co-educational school  
where happy children  
make excellent  
progress.

Book your personal tour of our  
wonderful school t: 01787 273050  
[www.stmargaretsprep.com](http://www.stmargaretsprep.com)

e: [admissions@stmargaretsprep.com](mailto:admissions@stmargaretsprep.com)  
Hall Drive, Gosfield, Halstead, Essex CO9 1SE

COGNITA

# Gosfield Grapevine



'Afternoon Delight' at St. Catherine's Church

Issue 98 –December 2021

Gosfield Parish Council

Visit our showroom  
OPEN MONDAY – SATURDAY  
55 High Street, Halstead CO9 2JD



Windows, Doors & Conservatories  
Quality as standard at affordable prices

✓ comprehensive 10 year warranty ✓ free insurance backed guarantee

**FOR A FREE QUOTATION CALL 01787 274475**

email [sales@greenglaze.co.uk](mailto:sales@greenglaze.co.uk) [www.greenglaze.co.uk](http://www.greenglaze.co.uk)



ultraframe



FENSA  
Registered Company



WELCOME TO 🐾 THE FORGE VETERINARY CENTRE, HALSTEAD, ESSEX

Opening Hours:

Monday - Friday 8.30am - 6.30pm | Saturday 8.30 - 11.00 am  
24 hour Emergency Service

93b Head Street, Halstead, Essex CO9 2AZ

Telephone: 01787 472666 | Email: [info@forgevets.co.uk](mailto:info@forgevets.co.uk)  
Web: [www.forgevets.co.uk](http://www.forgevets.co.uk)



Ample Free Parking

DEDICATED TO THE CARE OF COMPANION ANIMALS • FRIENDLY SERVICE

e-mail address: [forgevets@btconnect.com](mailto:forgevets@btconnect.com)

## NOTES FROM THE EDITOR

Dear all, you should, by now, have received questionnaire as to the future vision for the village. Please fill in your questionnaire and return it to a designated collection point.

Note: the deadline for things to go into the next Gosfield Grapevine magazine is:

**Friday, 21<sup>st</sup>, January, 2022**

Anything sent in after this will be put forward into subsequent magazines.

If you would like to advertise your community event, club, or business, and for anything Grapevine related, please contact the Gosfield Grapevine editor at:

[grapevine@gosfieldparishcouncil.org](mailto:grapevine@gosfieldparishcouncil.org)

### DATES TO NOTE:

Thursday, 2<sup>nd</sup> December – Soup Club  
Thursday, 9<sup>th</sup> December – Soup Club  
Tuesday, 21<sup>st</sup> December – Winter Solstice  
Saturday, 25<sup>th</sup> December – Christmas Day  
Sunday, 26<sup>th</sup> December – Boxing Day  
Monday and Tuesday, 27<sup>th</sup> and 28<sup>th</sup> – Bank Holidays  
Friday, 31<sup>st</sup> December – New Year's Eve  
Saturday, 1<sup>st</sup> January – New Year's Day  
Tuesday, 25<sup>th</sup> January – Burn's Night

### Monday "Cuppa" Club

In

#### The Maurice Rowson Hall

Afternoon tea, sandwiches, cakes, coffee and tea all for just £1  
Plus good conversation, raffle and entertainment

**Looking forward to seeing you all there.**



### Gosfield Hall Weddings in December [and 'Whisper-Package' Fireworks]:

Wednesday 1st December  
Thursday 8th December  
Thursday 9th December  
Friday 10th December

Wednesday 15th December  
Friday 17th December  
Saturday 18th December  
Monday 20th December

Thursday 23rd December  
Tuesday 28th December  
Thursday 30th December  
Friday 31st December

## CHAIRMAN'S NOTES

### The Limes Development:

A fortnight ago I observed a very interesting meeting of Braintree District Planning Committees concerning the Limes Development. As many of you will know, this is for 19 new houses. Planning permission had already been given in outline, after several modifications to protect the historic avenue of Limes. However the developers had also to sign a 106 agreement. 106 agreements are where some benefits have to be given to the community in return for planning permission. On this occasion there were to be 2 parts to the agreement. The village would be given a contribution of £34,000 towards replacing the existing skateboard ramp on the playing field which is deteriorating, and there would be two areas of the site in the North and South where the public would have access. The developers refused to sign this because they wanted to keep the southern area as private land.

The planning committee insisted it be public land because they did not want the new estate to be a private estate cut off from the rest of the village community and Jo Beavis, District Councillor for Hedingham who sits on the Planning Committee also spoke strongly against. As a result the Committee refused to agree to the Planning Application.

What happens next? Well, no doubt the developers will appeal against the decision, but my gut feeling is that this will fail and they will have to climb down in the end or risk losing the whole estate.

### Rats:

We have had an infestation of rats in the Playing Field car park and also in Highgates, the houses opposite. One source of the infestation was traced to the litter bags which are stored for collection in a wooden compound at the rear of the car pack. A pest control officer was called in and had out down poisoned bait which appears to be successful and the Parish Council have obtained some metal bins from BDC to store the litter bags secure from rats.

Finally, from the previous edition of The Gosfield Grapevine, I would like to apologise for omitting to thank Barrie Schultz and Jeremy Paterson for doing a great job in organising the Golf Day and helping to raise £1,800 towards the fund raising for the village shop.

Bob Waters



**Gosfield Grapevine Community Group**

Ongoing planning applications for building works are given on page 23.

## ST. CATHERINE'S GUILD OF RINGERS

Do you enjoy hearing the bells ring on a Sunday morning ?

If so, you may have noticed that recently the ringing does not sound like it used to. This is because we now only have three Gosfield ringers and have to rely on volunteers from outside Gosfield to come and help us when they are available to ring the bells on a Sunday morning.



If you have ever wondered what it takes to ring the bells then please contact either Laurence Carter or myself, Dave Jarvis, and we will be pleased to explain to you what is involved.

The minimum age for learning to ring is 10, there is no upper limit.

Laurence Carter 01787-472225 [laurencejcarter@gmail.com](mailto:laurencejcarter@gmail.com)

Dave Jarvis 01787-474562 [davjar33@gmail.com](mailto:davjar33@gmail.com)

### Gosfield (Mobile) Library

Nuns Meadow, Saturday,

9:45 am to 10:15 am:

27<sup>th</sup> November

18<sup>th</sup> December

8<sup>th</sup> January, 2022

29<sup>th</sup> January, 2022

19<sup>th</sup> February, 2022

### Halstead Library

(Not open public holidays)

Monday 9am to 5pm

Tuesday 9am to 6pm

Wednesday Closed

Thursday 9am to 6pm

Friday 9am to 5pm

Saturday 9am to 5pm

Sunday Closed

## BLOCKED DRAINS?

We are a father & son drainage company specialising in

**Blocked Drains • CCTV Surveys**

• **All Blockages Carried Out**

• **Underground Drain Repair • Patch Repair.**

Local Water Authority Approved

• 24 Hour Service • 35 Years Experience

**Call Andy Cleminson: 07956 665272**

## REV. ROSE'S RAMBLINGS

Hello, Gosfield !

[services listed on pages 31 and 32]

By the time you read this (or not), we may have had snow (or not), but it certainly is jolly cold even where I live, a good oooh, 8 miles south of Gosfield. I've been trying to get my sadly-neglected garden in some sort of shape for winter, waging war on ivy, ground elder, couch grass and miles of bindweed. That seems to be immortal, doesn't it, and reaches from the very depth of the earth? Digging it out is pretty useless, because back it pops the moment your attention is diverted – just like sin, I think. Pat yourself on the back that you've escaped temptation, and whoops, here we go again! (We priests see sermons everywhere, drives us crazy, so excuse this particular personal bindweed...)

This year I've tried a different tactic with the weeds, one advocated a good 30 years ago by a very sage gardening friend: no dig. Get any decent plants out of the way, cover the ground (weeds and all, even plain grass lawn) with a good layer of cardboard, cover it with a thick layer of compost, and get planting. Disturb the compost as little as possible, and by the time the cardboard has decayed, the weeds have lost their vigour and rotted away, and you have clean soil and flourishing plants. A very few straggly bindweed fight their way through, but keep pulling them out and they eventually give up too.

It all sounded too easy, which is why I've not tried it before – but blow me, it seems to work! No more weeding, pretty much, and some great veg. It's working in my garden, and I'd never have believed it could !

Now here comes the sermon – suppose instead of constantly trying to make ourselves behave better, live better lives, overcome temptation and all that stuff, we just admit we can't do it, and cover ourselves over with faith in Jesus, and ask him to smother the perennial weeds in our lives ? It won't make us quite perfect, but I'd bet it reduces the sin to a manageable level, and our lives will have scope to be fruitful and delicious in a way they can't be otherwise. You may not be convinced it will work (like me and my dig-the-weeds-out gardening all these years), but it's got to be worth a try, surely, when nothing else has worked, has it ?

So, sceptics, believers, agnostics, atheists (like I was) and doubters all, that's why everyone is welcome in St Catherine's, because we are all weedy gardens and think that simple faith is too easy a way of sorting life out **until we try it**. And Christmas is a good time to give it a go – do come along and join in. Don't worry about whether it might seem to be hypocritical to join in worship when you're not really sure about things – the God who created everything can cope with how we are. After all, at Christmas we are celebrating God's becoming one of us, in that stable all those years ago, so we'd have a job to shock God !

So that's my takeaway from this column: faith in Jesus is like, er, cardboard and compost...but it certainly leads to new life and joy. Hope you'll take the risk, and that this Christmas will be the start of a wonderful time of new blessing that will last you a lifetime here, and in eternity. Happy Christmas, Gosfield. With prayers and blessings,

Blessings as ever, Rev Rose: ([revrosebraisby@btinternet.com](mailto:revrosebraisby@btinternet.com) or 01245-361927)

**Christmas Eve: 5 p.m. in Church and on Zoom – Christingle for all ages**  
<https://us02web.zoom.us/j/85499175281?pwd=YjhQTvdWYS9jTDFtUG93L25ZQ2NMdz09>

Meeting ID: 854 9917 5281 Passcode: 395215

**Christmas Eve: 11.30 p.m. in Church and on Zoom – Midnight Mass**  
<https://us02web.zoom.us/j/81517522092?pwd=MG1zM0IRaGdjUk41eU9FL0tPTIkyQT09>

Meeting ID: 815 1752 2092 Passcode: 559562

*Happy Christmas from RevRose and all at St Catherine's!*

**Christmas Day: 10.30 in Church and on Zoom – Family Communion for Christmas**

<https://us02web.zoom.us/j/83222492469?pwd=aIRrTFZMZVAvb2ZTa1dFVkhZNTNMUT09>

Meeting ID: 832 2249 2469 Passcode: 121672

**Boxing Day, Sunday 26 Dec: 9 a.m. in Church and on Zoom – Team Traditional Book of Common Prayer Communion**

<https://us02web.zoom.us/j/82165234163?pwd=SFJxa1o5VDdMbU9hRVQ4Z1pua2duQT09>

Meeting ID: 821 6523 4163 Passcode: 149421

*We wish everyone a very happy New Year*

**Sunday 2 Jan 2022: 10.30 in St Andrew's Church, Halstead – Team Communion**

**Sunday 9 Jan: 10.30 in Church and on Zoom – Family Communion (& possibly a Christening) celebrating the Baptism of Christ**

<https://us02web.zoom.us/j/89854272368?pwd=WWJob3Z1Z2dhL1IPU3BSL1QwRjRVdz09>

Meeting ID: 898 5427 2368 Passcode: 966526

**Sunday 16 Jan: 10.30 in Church and on Zoom – 2<sup>nd</sup> Sunday of Epiphany – Communion**

<https://us02web.zoom.us/j/89994301019?pwd=d29tS0JxWWZJWGJmTldybGh4S0dwZz09>

Meeting ID: 899 9430 1019 Passcode: 561478

**Sunday 23 Jan: 10.30 in Church and on Zoom – 3<sup>rd</sup> Sunday of Epiphany – Morning Praise**

<https://us02web.zoom.us/j/84192407617?pwd=M3FwVXkxWRWg3T3BpZ1pmRFFvTXI5Zz09>

Meeting ID: 841 9240 7617 Passcode: 424744

**Sunday 30 Jan: Team Service in Great Maplestead.**

32

## GOSFIELD PARISH COUNCIL:

ROLE:	NAME:	CONTACT INFORMATION:
Parish Clerk	Diane Jacob	5 Crocklands, Greenstead Green, CO9 1QY <a href="mailto:parishclerk@gosfieldparishcouncil.org">parishclerk@gosfieldparishcouncil.org</a> 07907-631172
Chairman	Bob Waters	21 Meadway, CO9 1TG <a href="mailto:bob.waters@gosfieldparishcouncil.org">bob.waters@gosfieldparishcouncil.org</a> 01787-473863
Vice Chairman	Tricia Edwards	Home Farm House, CO9 1RZ <a href="mailto:tricia.edwards@gosfieldparishcouncil.org">tricia.edwards@gosfieldparishcouncil.org</a> 01787-472958
Councillor	Maggi Pawsey	Tye Beams, The Street, CO9 1TP Via the Parish Clerk 01787-472967
Councillor	Carol Betty Hough	13 Braintree Road, CO9 1PR Via the Parish Clerk 01787-477208
Councillor	Sara Moutard	27 Meadway, CO9 1TG <a href="mailto:sara.moutard@gosfieldparishcouncil.org">sara.moutard@gosfieldparishcouncil.org</a> 07837-699014
Councillor	Sam Cowie	Duval, Kings Head Field, CO9 1TN <a href="mailto:sam.cowie@gosfieldparishcouncil.org">sam.cowie@gosfieldparishcouncil.org</a> 07902-322588
Councillor	Joanne Lisa Colyer	13 Nuns Meadow, Gosfield, CO9 1UB <a href="mailto:joanne.colyer@gosfieldparishcouncil.org">joanne.colyer@gosfieldparishcouncil.org</a> 01787-477808
Councillor	Mark David William Bloomfield	6 Woodland Way, Gosfield, CO9 1TH <a href="mailto:mark.bloomfield@gosfieldparishcouncil.org">mark.bloomfield@gosfieldparishcouncil.org</a> 07879-604074
Councillor	Jo Beavis	The Retreat, New England, CO9 3HY <a href="mailto:jo.beavis@gosfieldparishcouncil.org">jo.beavis@gosfieldparishcouncil.org</a> 07771-984365

For anything Parish Council related, please contact the Parish Clerk, as above.

5

# MY COMMUNITY MY OPPORTUNITY MY OTHER LIFE



SPECIAL CONSTABULARY  
NOW RECRUITING  
**GOSFIELD**

my  
Other  
life

#MyOtherLife

If you want to make a real difference in your town then volunteer as a Community Special Constable and play a part in keeping your neighbourhood safe.

Gosfield Parish Council are supporting Essex Police to increase local and visible policing in their area.

Visit [www.essex.police.uk/Specials/Gosfield](http://www.essex.police.uk/Specials/Gosfield) to find out more

## ST CATHERINE'S: SERVICES FOR GRAPEVINE – EVERYBODY IS WELCOME!

N.B. This all depends on the COVID situation locally, of course, but we are hoping these will run smoothly and with as little risk as possible. Decent coffee and biscuits (sometimes cake!) after Sunday services.

**Any time of day or night, on the phone: 01376-317669 – Traditional Book of Common Prayer Communion**

**Sunday 28 Nov: 10.30 in Church and on Zoom – The Jesse Tree Service; Communion**

<https://us02web.zoom.us/j/81732251756?pwd=N0RRbVIHV21ncjVwYW1RMnIGRFRsz09>

Meeting ID: 817 3225 1756

Passcode: 498281

**Thursday 2 Dec: 12.30 in Church – Soup Lunch** (no charge, donation welcome); with a chance to ask those awkward questions about faith.

**Sunday 5 Dec: 10.30 in Church and on Zoom – we celebrate Saint Catherine's Day; Communion**

<https://us02web.zoom.us/j/83995496889?pwd=dWlwUFoxV2xrZkFkK25CY1ByNHA0UT09>

Meeting ID: 839 9549 6889

Passcode: 889368

**Thursday 9 Dec: 12.30 in Church – Soup Lunch** (no charge, donation welcome); lots of chat, perhaps more awkward questions?

**Sunday 12 Dec: 10.30 in Church and on Zoom - 3<sup>rd</sup> Sunday of Advent; Communion**

<https://us02web.zoom.us/j/89000144514?pwd=THdXY0Z0MDJsRWxyZ1UxR0preFdUQT09>

Meeting ID: 890 0014 4514

Passcode: 082300

**Probably on Thursday 16 Dec: 12.30 in Church – Soup Lunch** (no charge, donation welcome).

**Sunday 19 Dec: 10.30 in Church and on Zoom - 4<sup>th</sup> Sunday of Advent; Morning Praise**

<https://us02web.zoom.us/j/86213447227?pwd=R0M1OWVWYzNWU3Z6cEZKTIczeDJ0dz09>

Meeting ID: 862 1344 7227

Passcode: 092198

**Sunday 19 Dec: 3 p.m. - Nine Lessons & Carols** (for COVID reasons, outside if the weather is OK), with mince pies and mulled wine afterwards. On Zoom if we can make it work:

<https://us02web.zoom.us/j/89544225261?pwd=VURrS3RtWVlIU1U2MU41R2IzQkFLUT09>

Meeting ID: 895 4422 5261

Passcode: 191012

## REV. ROSE'S:

We meet in St Catherine's at 10.30 on Sunday mornings – all welcome.  
<https://st-catherine-s-church-gosfield.sumup.link> or you can use our QR code.



If you prefer a traditional Book of Common Prayer service, you can phone 01376-317669 at any time and for just the cost of the phone call can listen to the latest recorded service.

## CHURCH-RELATED NEWS:

To find out more about hatches, matches and dispatches, plus more, much more, including a brief history of Gosfield, baptism, confirmation, photographs, Jesus. More than anyone can read, and interesting too, head to:

[www.stcatherineschurchgosfield.org.uk](http://www.stcatherineschurchgosfield.org.uk)

## ST. CATHERINE'S CHURCH 50/50 CLUB

<b>October Winners:</b>	No. 47 Mrs. V Perry	No. 78 Mrs. J Tutton
	No. 63 Mrs. D Boyton	No. 108 Mrs. D Clary
<b>November Winners:</b>	No. 10 Mrs. S Hume	No. 37 Mrs. T Edwards
	No. 19 Mrs. A Degnan	No. 163 Mrs. B Wilkin

Anyone wishing to join, please contact **Hazel** on 01787-472593

## 'The Friends of St Catherine's Church'

'The Friends of St Catherine's Church' are a small group of volunteers who support our Church financially in the fabric of the building. Please consider becoming a member, (with no commitment) it is just £10 each, or £20 a year per family. For a bankers standing order contact David Degnan on 01787-472291, or [www.gosfieldchurch.org.uk](http://www.gosfieldchurch.org.uk).

## MATTHEW D JARVIS

### GENERAL BUILDER PROPERTY MAINTENANCE

ESTABLISHED 1992

Extensions • Block Paving • Brickwork • Groundwork  
Carpentry • and all your building needs

**All Work Guaranteed**

**Tel: 01787 475561 Mob: 07798 846051**

**4 Highlands, Gosfield, Halstead, Essex CO9 IPH.**

### Gosfield Rainbows



Places available for Girls aged 5-7  
Meet on a Monday 4:45-5:45pm  
term time only

Rainbows is exciting, messy,  
friendly and a lot of fun!

Come join us!

Call Stacey, Rainbow Leader

on

07814 233219

or look online at

Girlguiding to register your daughter  
TODAY!

### Gosfield Brownies



Places available for Girls aged 7-10  
Meet on a Monday 6:00-7:30pm  
term time only

Introduce your daughter to a  
world of new adventures,  
challenges and fun!

Call Gill, Brown Owl

on

07801 265603

or look online at

Girlguiding to register your daughter  
TODAY!

## GOSFIELD CARPET BOWLS CLUB:

The effects of the Covid-19 Pandemic lock-down are slowly receding as the Country begins to return to normality.

The Gosfield Carpet Bowls club began re-opening its club night meetings in May of this year. Initially, members were nervous, apprehensive and a little uncertain of how safe we were to play this indoor sport again at a time when there was much debate in the media of how safe the country was in slowly releasing the restrictions.

We prepared a code of restrictions to be observed, together with those of the Rowson Hall procedures, when playing within the hall which were strictly observed to by our membership.

Initially the return of the membership was slow with just enough members returning to make the club nights viable again. However, over time, the return of the membership has increased to a level close to that of pre lock-down such that we have now returned to playing two nights per week, Monday and Wednesday evenings. The spirit of the club has also returned and we are looking forward to playing once again in league and individual championship games when these re-start.

At present, the Essex CBA are reluctant to restart these competitions, not only through the uncertainty of how safe the competitors can be kept, but also because they are unsure of how many clubs have survived the lock down. A formal meeting of all clubs in the Essex area is to be held on Friday 26<sup>th</sup>, November, to discuss how we can return to playing again as in the past, or what changes will need to be made given the present situation.

Gosfield has begun to play friendly competitive matches with other clubs in the area and we enjoyed a competitive and very enjoyable evening playing against Shalford on Wednesday 3<sup>rd</sup>, November. The playing format was organised a little differently from of pre lock-down, but it did not interfere with the players enjoyment and may be used in future league match organisations.

We will continue to play during the winter period as normal and we shall be holding our Christmas lunch at the Gosfield Golf club on Wednesday 15<sup>th</sup>, December. A sure sign that the membership is determined to put the pandemic behind them.

The membership level is now close to that of pre-pandemic but we are always ready to welcome new experienced or pure beginners to the club. For further details please contact Paul Nicklin , Manager , or visit any Wednesday club night.

Paul M Nicklin, Manager , Gosfield Carpet Bowls Club.

---

### Passenger Transport Representative:

Is any member of the public interested in representing the village on a local panel which deals with public transport ? It doesn't have to be a Parish Councillor. If interested, please contact the Parish Clerk for details.

Bob Waters

## RIGHTS OF WAY:

Public Rights of Way as the phrase implies, are footpaths over which the public has a right to cross someone else's land. This right goes with the land, and passes to new owners when the land is sold. It is very difficult to alter or abolish a Right of Way. What is often forgotten is that the land owner should maintain it and make it easy to walk over. That means a farmer should restore a footpath after ploughing. (Running a tractor wheel along it is the usual method). A farmer can put in a gate or stile to secure farm animals but a gate must be capable of being opened. It is illegal to completely shut off a Right of Way.

In some cases an individual might own a Right of Way- often unknowingly. A good example is the footpath running to the rear of Meadway which is owned by those whose gardens back on to that section. Since the owners rarely get to see their Deeds they don't know that they own that bit and therefore have a duty to keep it clear. I am one of them!). Sometimes a Parish Council might own one –for example the footpath to the Nature Reserve along the Northern side of Edmund Green which is owned by our Parish Council.

Occasionally there are private Rights of Way where the right exists for a group of residents to have access to their property.

Bob Waters

**GOSFIELD, HALSTEAD,  
SIBLE HEDINGHAM & BOCKING,**  
*In a good Sporting and Hunting District, about 4½ miles from Braintree, G.E.R.; about 3 miles from Halstead, C.V.R.; about  
44 miles from London; and within easy reach of Newmarket and the East Coast.*

---

Particulars and Conditions of Sale  
OF  
**The Valuable Residential, Agricultural and Sporting Estate,**  
KNOWN AS  
**“GOSFIELD PLACE,”**  
(COMPLING)  
**IMPOSING MANSION,**  
Surrounded by **BEAUTIFULLY-TIMBERED PARK** of about 160 Acres,  
Large Lake, Pretty but Inexpensive Grounds, Extensive Stabling.  
**POSSESSION ON COMPLETION.**

---

**8 MEDIUM - SIZED FARMS,**  
Small Holdings, Various Enclosures of Arable and Pasture Land,  
**FULLY-LICENSED PUBLIC-HOUSE** known as “THE GREEN MAN,”  
Numerous Cottages and Dwelling Houses,  
**2 VALUABLE SPORTING COVERS,**  
THE WHOLE COVERING AN AREA OF ABOUT  
**1434A. 2R. OP.**





 **The Hawthorns**  
BRAINTREE

# ONE MONTH RENT FREE

Live safe and well at The Hawthorns, a warm and friendly all-inclusive rental retirement community for the over 70s and enjoy your seventh month on us. \*



Celebrate the beginning of your free month with a complimentary bottle of champagne. We'll have one on ice for you - cheers!

**Call today to book a safe, guided in-person or virtual tour**

## 01376 778214

[hawthornsretirement.co.uk](http://hawthornsretirement.co.uk)

The Hawthorns Braintree | Tortoiseshell Way | Essex | CM7 1TD

\* Terms and conditions apply

## Juniper Flowers

*"pinch of vintage"*




Contact us for all your floristry needs - Silk Flowers, Bouquets, floral baskets, rustic planters, jars of happiness and arrangements for every occasion and budget.

We also offer a variety of gifts such as handbags, scarves, wax melts and greeting cards.

Free Wedding, funeral quotes, home visits available.

Check out our website  
**'juniperflowersudbury'**

where you can order online or ring the shop 01787-310022 where we will be happy to help.

We are situated at 78/79 North Street, Sudbury, CO10 1RF.



## TRANSPORTER

Engineering Excellence

We are always interested in employing local people, our current vacancies can be found on our website:  
[www.transporter-eng.com](http://www.transporter-eng.com)

CV's with covering letter should be sent to:  
[HR@transporter-eng.co.uk](mailto:HR@transporter-eng.co.uk)

For details of future open days please contact Isla Gill:  
[isla@transporter-eng.co.uk](mailto:isla@transporter-eng.co.uk) or 01787 273013





Tel:  
01787  
469628



- Leaflets • Posters • Menus • Price Lists • Booklets • Stickers • Labels • Letterheads
- Compliment Slips • Business Cards • Loyalty Cards • Invitations • Draw Tickets
- Orders of Service • Invoices/Estimates/Contracts • NCR Sets, Pads, Books • Envelopes

Email: [sales@paulclarkprint.co.uk](mailto:sales@paulclarkprint.co.uk) Web: [www.paulclarkprint.co.uk](http://www.paulclarkprint.co.uk)  
Unit 7 Rippers Court, Sible Hedingham, Essex CO9 3PY

### GOSFIELD SOCIAL CLUB

The Street Gosfield

Fully licensed bar

Comfortable seating area

Two full size snooker tables

Open 8pm to 11pm Monday to Saturday

Membership £8 per year  
(£4 Seniors and Juniors)

New members welcome



### Gosfield & Halstead Original Paintings



Sats / Suns 10-5pm  
ANY other time by  
Arrangement on  
01787-472803

PRINTS from £6. Framed £10  
CARDS from £1  
Please come & Browse  
without obligation  
Halstead Road  
[georgieroyartist.co.uk](http://georgieroyartist.co.uk)

# The Little Flowerhouse

Your Local Florist and supplier to Gosfield Community Shop  
Can now be found at:

The Cabin at Wash Farm, Queen Street, Sible Hedingham.

*Providing flowers for all reasons and seasons.*

Open Monday to Saturday 08.30 to 17.00.

Wed 08.30 to 13.00.

Closed Sundays.

Email: [thelittleflowerhousegosfield@gmail.com](mailto:thelittleflowerhousegosfield@gmail.com)

Web: [www.thelittleflowerhouse.co.uk](http://www.thelittleflowerhouse.co.uk) or Tel: 07736-280602

## Mr ODD JOB & SOW & GARDENING Co.

Interior & Exterior  
Painting  
Fencing & Decking



Hedging  
Grass Cutting  
Planting & Turfing



### THE PAINTING COMPANY

*For those jobs in life that just don't get done,  
Call Paul*

**T: 01787 583 138 ~ M: 07712 314 434**  
**General Garden & Home Maintenance**

## Could YOU be a *Bloodrunner* ?



The **Essex Voluntary Blood Service** – or “*Essex Bloodrunners*” for short, is a charity providing medical courier services to the NHS and our local Air Ambulances. We are one of 30 such organisations in the UK.

From the NHS Blood Bank at Basildon, our unpaid volunteers deliver blood and blood products to A&E Hospitals in Essex and East London; deliver samples for analysis to a NHS Lab in North London, and via Princess Alexandra Hospital in Harlow, supply blood to the Air Ambulances at Earls Colne and North Weald every night. Amongst many other tasks we also courier breast milk from donors to the Hearts Milk Bank and Addenbrooke’s Hospital.

We operate every weekday night, and day and night shifts at weekends and Bank Holidays. Our enhanced support to Hospitals during the Covid-19 pandemic has also introduced a weekday daytime shift. We now need more members. You choose in advance the days and shifts you work. We are looking for reliable and responsible men and women from all backgrounds, employed or retired, with a motorcycle, car or van, a mobile phone and internet access. You will receive training, documentation, full support and a hi-viz uniform jacket.

You will work alone on a delivery run with a typical round-trip distance from home of between 60 and possibly over 120 miles, and be the face of Essex Bloodrunners to the public and NHS staff. The work is not glamorous; can be tiring; you may work unsocial hours in all weathers and you will add thousands of miles to your vehicle. You are unpaid and cover all your own expenses... *so not much going for it really!*

However, rather like being a First Aider or Blood Donor, this is one of the very few ways that an ordinary member of the public can help **save a life**.

Most of you reading this piece will think “*sounds good, but not for me*”, which we quite understand, but just one of you may wish to enquire further. If so, see our website at:



**EssexVoluntaryBloodService.com**



And thank you for your kind attention.

### GOSFIELD YARNIES:

A Knitting and Crochet group.  
At the Maurice Rowson Hall.

Wednesday – 10am - midday

£3 per person – which includes  
tea/coffee and homemade cakes.

### GOSFIELD POST OFFICE:

At the Maurice Rowson Hall.

Opening Times are:

Wednesdays 2pm - 5.30pm

Fridays - closed

Full Postal Service provided.



*When your house needs a clean*

*Do not shout, do not scream !*

*Just call for Daisy*

*and she'll make it gleam !*

*Phone Daisy on 07919-993363*

## Gosfield Lawn Tennis Club

New members are welcome of all ages and standards.

Professional coaching sessions available.

Adult memberships starts at only £30 for the first year.

For more information, contact our Secretary, Sheila Goldsmith, on **01787-478519**

and look at our website: [www.gosfieldtennis.co.uk](http://www.gosfieldtennis.co.uk)

## 3z Electrical

Fully qualified, experienced, certificated  
and reliable local electrician.

All types of domestic, commercial and  
industrial work carried out including fault  
finding, testing and inspections.

Phone Steve on:

**07964-677163, or, 01787-479655**

27 Meadway, Gosfield

## K9 Walks 'N' All

Dog Walking & Pet  
Daycare Visits

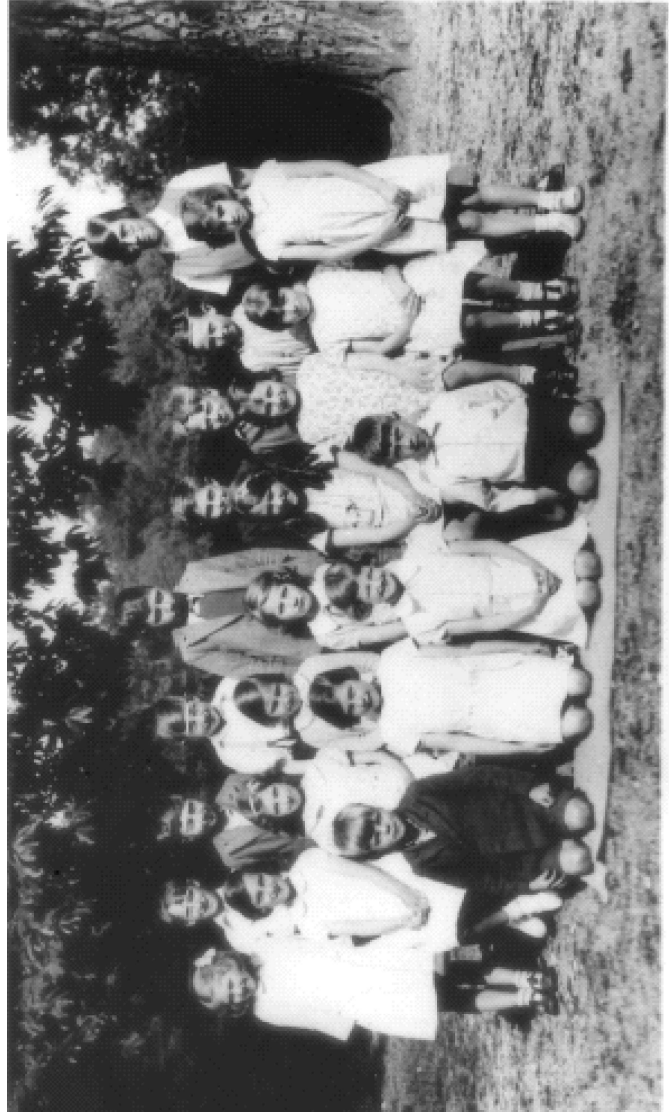
Friendly, Reliable  
and Fully Insured

Phone Rebecca  
07960 485983

[www.k9walksandall.co.uk](http://www.k9walksandall.co.uk)



BACK  
 DOROTHY JEGGO  
 DICK EVERITT  
 DICK TURBIN  
 GEORGE COOK  
 KEN WISEMAN  
 DAVID ALLEN  
 BOB BOYTON  
 MISS WATSON  
 MIDDLE  
 INA EVERITT  
 DOROTHY WEGG  
 BERYL LOCK  
 ALMA BRAZER  
 KITTY LAVER  
 LOUISE WISEMAN  
 JUNE JEGGO  
 JOAN BACON  
 FRONT  
 ERNIE FARLEY  
 IRIS DRURY  
 RUBY METSON  
 FRANK POULTON



**Gosfield Primary School Pupils [mid 1930's]**

<b>GROUPS, SOCIETIES AND COMMITTEES:</b>			
Toddler Group	Emma	07872-916917	
Gosfield Players	Jules Wilkinson	07958-903932	
Gosfield Rainbows and Guides	Stacey Creak	07814-233219	
Gosfield Brownies and Guides	Gill Hillman-Crouch	01787-478097	Or: 07801-265603
Gosfield Cubs and Scouts	Steve Sudbury	07885-467712	<a href="mailto:stephensudburygardens@gmail.com">stephensudburygardens@gmail.com</a>
Gosfield Women's Institute	Michelle Hine	01787-469359	Tuesday, 2nd week, 2 pm
Gosfield Senior Circle	Joan Cornell	01787-478235	Tidings Hill
Gosfield Twinning Association	Bridget Waterer		<a href="mailto:swithin.wfl@googlemail.com">swithin.wfl@googlemail.com</a>
Gosfield Horticultural Society	Rebecca Westover	01787-477331	
Gosfield in Bloom	Mandy Adams	01787-273494	<a href="mailto:mandyladams@icloud.com">mandyladams@icloud.com</a>
Gosfield Fete Committee	Chris Flint	01787-474573	
Gosfield Playing Field	Isla Gill	01787-473398	<a href="mailto:isla.gill@hotmail.com">isla.gill@hotmail.com</a>
Gosfield Open Gardens	Brian Payne	01787-473670	<a href="mailto:thepaynes57@hotmail.com">thepaynes57@hotmail.com</a>
Maurice Rowson Hall	Amanda Degnan	01787-274992	<a href="mailto:rowsonhall@gmail.com">rowsonhall@gmail.com</a>
Rowson Perpetual Fund	David Jarvis	01787-474562	<a href="mailto:davjar33@gmail.com">davjar33@gmail.com</a>
<b>ST. CATHERINE'S CHURCH:</b>			
Priest -Reverend	Rose Braisby	01245-361927	<a href="mailto:revrosebraisby@btinternet.com">revrosebraisby@btinternet.com</a>
PCC Secretary	Judy Paterson	01787-472514	
Church Wardens	Bob Waters	01787-473863	
	Judy Paterson	01787-472514	
Wedding Co-ordinator	Dave Patmore	01787-474047	
Bell Ringing - Tower Captain	Laurence Carter	01787-472225	<a href="mailto:laurencecarter@gmail.com">laurencecarter@gmail.com</a>

## GOSFIELD VILLAGE ENTITIES

### SCHOOLS:

Gosfield Primary School	Jo Morgan (Head Teacher)	01787-472266	<a href="mailto:admin@gosfield-pri.essex.sch.uk">admin@gosfield-pri.essex.sch.uk</a>
St. Margaret's School	Carolyn Moss (Headteacher)	01787-472134	<a href="mailto:admin@stmargaretsprep.com">admin@stmargaretsprep.com</a>
Gosfield School	Rod Jackson (Principal)	01787-474040	<a href="mailto:enquires@gosfieldschool.org.uk">enquires@gosfieldschool.org.uk</a>

### SPORTS CLUBS:

Gosfield Carpet Bowls Club	Paul M Nicklin	01787-478269	<a href="mailto:paul.nicklin39@gmail.com">paul.nicklin39@gmail.com</a>
Gosfield Lake Golf Club	Tony O'Shea	01787-474747	<a href="mailto:gosfieldlakegc@btconnect.com">gosfieldlakegc@btconnect.com</a>
Gosfield Juniors Football	Mark Wiskin	07930-990013	
Gosfield United Football Club	Simon Fraser (Chairman)	01206-211470	
Gosfield Tennis Club	Sheila Goldsmith (Secretary)	01787-478519	
Gosfield Lake	Linda Turp (Office Manager)	01787-4785043	<a href="mailto:turps@gosfieldlake.co.uk">turps@gosfieldlake.co.uk</a>

### PUB, CLUB and EVENTS HIRE:

The Kings Head	Emma and Matt	01787-474016	<a href="mailto:info@kingsheadgosfield.com">info@kingsheadgosfield.com</a>
The Social Club	Becky and Steve	01787-476235	
The Apple Tree	Maxine and Keith	01787-477715	<a href="mailto:enquiries@theappletreegosfield.co.uk">enquiries@theappletreegosfield.co.uk</a>
Courtyard Brewery	Tanya and Marc	07710-230662	

### GOSFIELD SUPPORT:

Community Agent	Chivonne Claydon	07540-720603	
Neighbourhood Watch Group	Louise Smith	07962-268376	

### GOSFIELD POLICE COMMUNITY SUPPORT OFFICERS (PCSO):

PCSO 70714	John Thorne	07812-068636	<a href="mailto:John.Thorne@essex.police.uk">John.Thorne@essex.police.uk</a>
PSCO 70955	Jo Cooper	07812-068697	<a href="mailto:Joanne.Cooper@essex.pnn.police.uk">Joanne.Cooper@essex.pnn.police.uk</a>
Special Constable	Harrison Green		

Please note: bell ringing practice on most Tuesday evenings, 7.45 pm to 9.00 pm, novices and experienced ringers welcome.



### EVENTS AT THE SOCIAL CLUB THIS DECEMBER.

**Tuesday 7<sup>th</sup> December.** Turning on the Christmas lights. Come along and enjoy warm mince pies and mulled wine. Lights switch on at 7pm



**Saturday 11<sup>th</sup> December.** Live music at the club with popular local duo Two Minds.

Doors open at 7:30pm.

**Christmas Eve.** Family evening starting at 7:00pm.



**New Year's Eve.** Come along and see in the New Year. 7:30pm till late.

On Christmas and New Year's Eve please bring along a plate of food for a shared buffet.

**All members and Gosfield residents welcome.**

For further information on any of the above events please email Dave Jarvis at [davjar33@gmail.com](mailto:davjar33@gmail.com)

## MEMORIES by Linda Marlow (Richardson, Kemp)..... cont'd

Looking for somewhere to live in late 1945 was proving difficult in Gosfield. Since the olden days (or should that read beholden days ?) in most villages the properties were rented out by the landowners for employees. Sylvia's friend (a school teacher well known in the area) had personal experience of that old system. Her father worked for the Hall estate in the 1920's and was off sick 2 weeks with terrible stomach pains and fever. She told me that her mother still had to leave the rent on the step for the collector on Friday regardless. She vividly recalled her 7<sup>th</sup> birthday and sitting by her father's bed as he apologised for the lack of a gift. He died later that same day of Peritonitis. Her mother still put the rent out on Friday but it wasn't collected, so the next week she put 2 lots out, it wasn't collected however a note was put through the door on the Saturday that they had 5 days to vacate having defaulted on rent. A man called on them later that day to ask to measure windows for curtains on behalf of his wife as they were moving in the following week. So it became obvious it was a set up. She vowed to study to get a job to earn a good wage to provide her mother with a home that no one could take from them. This she did and they lived in Gosfield all their lives both have since passed on, but wanted their story told.

Sylvia heard of a place to rent in early 1946 near the Lorne Oak in Gosfield, the tree the village had planted to commemorate the marriage of Princess Louise to the Marquis of Lorne the previous century. Louise was the 6<sup>th</sup> daughter of Queen Victoria. Surely it was a sign ? Doug's Regiment's namesake. They prepared to move in but the offer was withdrawn the next week as the government told villages to prioritise accommodation for Officers of the Polish Forces remaining in England. Sylvia and Doug were luckily later offered a lovely cottage adjacent to Hedingham Castle at Pye Corner, in the area where her Gt. Grandad had been born, so she was happy. That same year her pre-war employer R A Butler of Stanstead Hall had written inviting Sylvia and Doug to meet with him and a Government friend at a Country Estate in Kent as he thought them ideal for employment with him but circumstances had changed as Doug was now at Courtauld factory and a baby was due in winter '47. Sydney Courtauld was RABs first wife and mother to his 4 children, Sylvia was often asked to help out at ministerial events, fund raisers etc. indeed she recalled forgetting the Canadian Ambassadors wife's name and asked their Chauffeur for the red headed lady's name. She was duly told and also that Madam had Titian hair.

Sylvia often spoke to classes decades later in her old School about how it was in her days there, writing on a slate, etc., it was then called Gosfield Hall School, started in 1858 as an Adult Lecture Hall, on land cleared after some cottages had caught fire from a bake house chimney opposite. The school was an initiative by Samuel and Ellen Courtauld, who believed strongly in education for all. So children were soon being educated there too and some younger than 4 years old, the school was non-secular in comparison to a school in Church Road erected by the Sparrow family. The Courtaulds' had lost their own dear daughter in Infancy. Some data states they had no children so adopted 2 but that is partially incorrect. The Mausoleum that once stood in Gosfield Churchyard was erected by them after their toddler daughter had died. It began a history of 'Courtauld' association with St Catherine's Church to current times. Samuel had bought the Hall to console his wife, so they could always be close to their daughter... To be cont'd.....

## GOSFIELD COMMUNITY SPEEDWATCH – 47 mph

Now that I have your attention, this is the speed of just one vehicle going through our village at 08.34 one school day morning, there are many others.

If speed through our village is such a concern to residents, why are so few assisting with the speed watch, for this to continue we will need more volunteers, and not rely on five individuals to cover this activity.

It really is not an onerous duty, it need only require one speed watch every month, or two, could also be on weekends when more people are at home. We cover in some sort of rota: The Street, Church Road, Braintree Road, Halstead Road, and Hedingham Road.

To offer your services or require more information contact David on:

[davidjdegan@gmail.com](mailto:davidjdegan@gmail.com)

### ROAD CASUALTIES AND OFFENCES:

*Below are the latest statistics for road casualties in Essex:*

11 people killed in traffic collisions	65 serious casualties
39 mobile phone offences	114 drink drive offences
236 seat belt offences	233 vehicles seized no insurance
124 careless driving offences	1,956 community speedwatch letters issued
6,487 number of road safety educational courses delivers	

### PLANNING APPLICATIONS (BUILDING):

- Proposed Loft Conversion including the insertion of side facing roof lights, proposed porch and proposed central cladding to front elevation, 1 Edmund Green Gosfield Essex CO9 1UF, Ref. No:21/03352/HH
- Insertion of rear dormer window, 23 Highlands Gosfield Essex CO9 1PH, Ref. No:21/03301/HH
- Proposed work involves diverting a short section of 11kV high voltage overhead line by installing a new pole and support stay, Beardswood Farm Parkhall Road Gosfield Essex CO9 1SQ, Ref. No:21/03086/OHL
- Demolition of existing dwelling and erection of 2 No. dwellings with detached double garages. 53 Halstead Road Gosfield Essex CO9 1PG, Ref. No:21/02900/FUL
- Construction of a building for general storage within arable field alongside associated works. Glen Cottage Park Lane Gosfield Essex CO9 1TU, Ref. No:21/02767/FUL

### STEPHENSONS BUSES:

Can I please sincerely apologise for the service you are receiving at the moment. Like all transport companies, we are suffering with a severe shortage of drivers at present. This coupled with extremely high levels of staff sickness and isolation periods, means we cannot always run all of our scheduled services. Unfortunately at present, it's impossible to say exactly when the service will return to normal, however we are doing our very best to make this as soon as possible. Many thanks, Matt Crooke  
Stephensons of Essex

## PARISH COUNCIL WORKING BODIES:

Group / Committee:	Councillors:
Nature Reserve	Hough, Moutard
Neighbourhood Plan	Beavis, Bloomfield, Moutard, Waters
Allotment Officer	Waters
Footpath	Beavis, Hough
Finance	Waters, Edwards, Bloomfield, Moutard, Cowie
Appeals	Cowie, Colyer
Children's Play Area	Hough, Pawsey, Colyer
Planning	Moutard, Waters, Beavis, Pawsey
Grapevine Editor	Alan Summerland
Tree Warden	Hough
Personnel	Bloomfield, Edwards, Waters
Information, minutes and agendas:	<a href="http://www.e-voice.org.uk/gosfield">www.e-voice.org.uk/gosfield</a>

## MEMBERS OF OUTSIDE BODIES:

Essex Association of Local Councils	Beavis
Braintree Association of Local Councils	Beavis
Coffee Rooms Trust	Waters
Maurice Rowson Hall Management Committee	Moutard
Rowson Perpetual Memorial Fund	Pawsey, Hough, Colyer
Playing Field Management Committee	Hough, Pawsey, Bloomfield

### Member of Parliament:

Mr James Cleverly MP - or:  
Braintree Conservatives  
Association Office:

House of Commons, London, SW1A 0AA  
[james.cleverly.mp@parliament.uk](mailto:james.cleverly.mp@parliament.uk)  
Suite 11, The Centre, Lakes Industrial Park,  
Braintree, CM7 3RU

### Essex County Councillor:

Cllr. Chris Siddall

Essex County Council, PO Box 11, CM1 1LX  
[cldr.chris.siddall@essex.gov.uk](mailto:cldr.chris.siddall@essex.gov.uk)  
Office: 01376-562288

### Braintree District Councillor:

Cllr. Peter Schwier  
Gosfield & Greenstead Green Ward

Long Fen, Great Maplestead, CO9 2RJ  
[cldr.pschwier@braintree.gov.uk](mailto:cldr.pschwier@braintree.gov.uk)  
01787-460473

HALSTEAD

Physiotherapy

& Sports Injury Clinic

Back & Neck Pain • Sports Injuries  
Arthritic Pain • Whiplash • Muscle & Joint Pain  
Headaches • Dizziness  
Acupuncture • Sports Massage • Pilates

Bank Building, 2 Market Hill,  
Halstead, Essex CO9 2AR

**01787 478789**

[www.lanephysioltd.co.uk](http://www.lanephysioltd.co.uk)

ALSO AT BRAINTREE & HAVERHILL

## DAVID SELF TREE SURGERY

Your local friendly tree surgeon

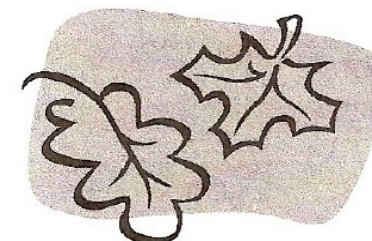
For every aspect of tree surgery including:

Felling, Crown Reduction, Crown Lifting, Pollarding, Dismantling  
Hedge Cutting, Forestry work, Site Clearance, Garden Maintenance  
Tree & Shrub Planting, Fencing

Wood chips for sale  
Logs for sale

NPTC Qualified  
Public Liability Insurance  
Free Estimates  
For a prompt reliable service

Tel: 01787 474664 / 07717 844885  
E-Mail: [davidms1981@yahoo.co.uk](mailto:davidms1981@yahoo.co.uk)  
19 Chestnut Avenue, Gosfield,  
Halstead, Essex, CO9 1TD



## **GOSFIELD HORTICULTURAL SOCIETY**

**Dates for 2022:** Spring Show 9<sup>th</sup> April, Summer Show 16<sup>th</sup> July,  
Autumn Show 17<sup>th</sup> September, Annual General Meeting 18<sup>th</sup> October.

Our Spring Show is small show devoted mainly to Daffodils and Tulips, weather permitting, but there are also the usual domestic classes, and a few vegetables. Early rhubarb and spring cabbages generally make an appearance. Schedules for the 2022 season will be available from the village shop in the early part of the new year at just £1.

It has been suggested that each issue of the Grapevine could contain a few seasonal gardening tips, and it has fallen to me as show secretary, to write the first. I do not profess to be a great gardener, but I love gardening, and believe it is an important way of producing a useful quantity of fresh, pesticide-free, fruit and vegetables, with occasional surpluses to give away or barter. Even from our relatively small garden, I estimate that we produce at least 20% of our fresh fruit and vegetable consumption, including homemade jams, chutneys, and fermented fruit drinks.

I'm not a tidy gardener, and I use almost no pesticide, (the occasional herbicide on persistent perennial weeds such as ground elder or bindweed). The compost heap is the power house of the garden, and wildlife is encouraged, (though a few less pigeons would be helpful !).

Autumn is the time of year to cut back the old growth of herbaceous plants, and trim out the fruited wood of raspberry canes and prune fruit trees. I prefer to wait until the leaves are off, as there is less rubbish to handle, the goodness has gone back into the ground, and I can see what I'm doing. I shred most of the woody waste from the garden, and add it to the compost heap. I will also be emptying one of the compost heaps, and spreading it over that part of the vegetable patch which is part of my no-dig area for next season.

Don't be too tidy; wildlife needs somewhere to hibernate; if you still prefer to burn your garden waste, then make sure no hedgehogs, frogs toads, newts or ladybirds are hiding in the heap, and save a bit in the corner of the garden for just that purpose.

It is the ideal time of year to plant shrubs, to get garlic and autumn-sown onion sets in the ground, and plant broad beans for an early crop.

You could even think about forcing some rhubarb. Early in the new year fill an old galvanised bath tub, washing up bowl or large bucket with loosely packed straw, and up-turn it over the rhubarb crown You will have some lovely fresh 'sticks' for an early crumble, and some to spare to exhibit in the spring show.

Happy gardening, Stephen Westover

---

### **'AFTERNOON DELIGHT'**

[Front Page] On behalf of the Heddingham Singers I would like to thank all Gosfield villagers and friends who supported our Concert. A huge 'thank you' to you all for being such an appreciative audience. Our local boy, Charlie Jarvis, raised a special ovation for his trumpet solos. A tremendous £690 was raised for St. Catherine's PCC, which is vital for maintaining the upkeep of our beautiful Church. Prim Rayner.

## **GOSFIELD IN BLOOM:**

On behalf of the Gosfield in Bloom team we would like to thank our sponsors for their continued support and to update everyone on what we have been able to achieve with your contributions and the money we've raised by holding our very popular and well supported Pop-Up cafes, Quiz Nights, and this year the Open Gardens.

Having started with using old tyres and planters kindly made & donated by Transporters, we also planted up tubs which were already placed around the village.

We have progressively invested in self watering items including 18 hanging baskets, 4 three tiered planters, 2 barrel tubs and we have just taken delivery of two large hexagonal planters which we will be positioned in the Spring.

We have purchased a water bowser which has greatly helped with the summer watering duties.

BDC donated litter picking equipment which has helped on our community litter picks.

The boat which is situated at Park Homes was kindly donated by Isla Gills dad, John.

We made Frogs and Ladybird planters out of old tyres which were placed at Gosfield Primary School and St. Margaret's Preparatory School.

The Muck Spreader, generously donated by Simon Humphrey and was beautifully restored and delivered for free by Ken Bailey and is now in position on Church Road.

The Gosfield sign which was planted with box hedges and edged with oak sleepers is now mature, along with flower beds and our new giants head, in the corner of the playing field, which should reach full maturity next year plus our feed the community project outside the village shop!

We hope you will all agree what a lot has been achieved over the last 4 years. We will continue to improve areas where we can.

During 2021 we entered the Anglia in Bloom virtual campaign, which we themed around the Olympic colour scheme and are pleased to announce we have been given a silver award.

We were also asked to enter the RHS Community Awards 2021 where we gained two achievement awards.

Of course, we would always welcome anyone who would like to join our friendly team, give us a call on 01787 273494 to discuss.

Finally, a huge THANK YOU to the Gosfield in Bloom Volunteers for all their hard work and commitment in keeping Gosfield Gorgeous !



Stage 6 of the  
Women's Cycle  
Tour of Britain,  
passing through  
Stoke-by-Clare.



## YULETIDE GREETINGS:

Our lovely Village has a strong festive spirit. In the run up to the Christmas season, lots of people enjoy an evening stroll around to see the Christmas lights. This gives us a chance to get into the festive mood and, to make the most of a fund-raising opportunity.

On 22nd December, from 6 until 8, in the garden of North Lodge on the corner of Hall Drive and the Street, there will be Christmas lights, "snow", Carol singing, Christmas songs, a log fire plus, available for a small donation, toasting s'mores, mulled wine, hot chocolate with marshmallows and mince pies.

All proceeds will be shared equally between Gosfield Scouts, The Village Shop and Gosfield in Bloom.

Ho ho hope to see you there!



### GOSFIELD COMMUNITY SHOP:

Opening Times:

Monday to Saturday: 8 am to 4 pm

Sunday: 8 am to noon

### Interested in Taking on an Allotment ?

The allotments are located in the village opposite Greenfields in The Street, Gosfield.

Once a plot is allocated the tenant must sign and return one copy of the agreement before any activity commences on the said plot. Rents are payable in arrears.

Plots will be inspected at frequent intervals to see that plot conditions are being complied with in accordance with the agreement, by our allotment Officer Councillor, Bob Waters.

If you would like to rent an allotment plot, please contact the Parish Clerk for further details. Tel: 0790-7631172 ([parishclerk@gosfieldparishcouncil.org](mailto:parishclerk@gosfieldparishcouncil.org)).



## 1<sup>st</sup> Gosfield Scout Group



Whatever your age [6 to 14 years], background or ability, everyone's welcome here



Contact Steve Sudbury (Group Scout Leader)  
on 07885-467712, or email at:  
[stephensudburygardens@gmail.com](mailto:stephensudburygardens@gmail.com)

## Gosfield Lake Golf Club "The Lakes Course"



- \* Our Championship Lakes Course, designed by the 3 time Open winner Sir Henry Cotton, is sculptured into 160 acres of stunning historic parkland and ancient woodlands.*
- \* The 6700 yard par 72 boasts gently undulating fairways, challenging water hazards and superb sand based greens and is a great test of golf for all levels.*

*We also pride ourselves in providing tailor made packages to your requirements creating your unique Golf Day at this superb venue.  
We can also offer extensive hospitality for weddings, conferences and social events no matter what the occasion.  
Come and join our warm and friendly club with an active membership that suits all lifestyles.*



*For details;  
Membership 01787 474747 - Green fees 01787 474488 - Bar and restaurant 01787 474400.*

## Discover the "Hidden Gem" of The Meadows Course at Gosfield Lake Golf Club



- Shake off those Covid Blues by enjoying a round of golf at our picturesque 9 hole Meadows Course located in the attractive village of Gosfield.*
- Our Course, the concept of the legendary open champion Sir Henry Cotton, is a beautiful parkland course which is perfect for the established golfer, beginners and families alike who are new to golf.*
  - It can also be used as the ideal development opportunity to progress to our 18 Hole Championship Lakes Course.*
  - A relaxed dress code will apply*



*• We also offer expert tuition and playing lessons with PGA Professional Stuart Baker, at competitive rates.*

*• Afterwards why not relax with a drink and a bite to eat in our friendly clubhouse bar, where the public are always welcome.*



- So why not give us a try and enjoy the relaxation that golf can bring.*
- For further information regarding Membership, please telephone 01787 474747*

*For information about green fees, speak to the Professional Shop on 01787 474488*

