



w: stmargaretsprep.com

Preparing your child for a bright future

We are an independent co-educational school for ages 2 to 11, where happy children make excellent progress. Contact us to book your personal tour of our wonderful school.



St. Margaret's
Preparatory School

Rated 'EXCELLENT' in all areas by



☎ 01787 273 050

✉ admissions@stmargaretsprep.com

📍 Hall Drive, Gosfield, Halstead, Essex CO9 1SE

ROUTE 2

APRIL 2026

8 14 21 28
WED

MAY 2026

6 12 19 27
WED

ROUTE 7

APRIL 2026

8 14 21 28
WED

MAY 2026

6 12 19 27
WED

Gosfield Grapevine



Endangered species list - view of the village in 1911 showing the King's Head public house (and the Rookery Garage) [with thanks to who has 'ownership' of this image].

Issue 124 – April-May (2026)

Gosfield Parish Council

GREEN GLAZE
WINDOWS

VISIT OUR SHOWROOM FOR PROMOTIONS AND OFFERS

- ✓ **WINDOWS**
- ✓ **DOORS**
- ✓ **CONSERVATORIES**

Roofline, Bi Fold Doors, Warmer Roof and all your home improvement needs.

Call for a FREE quotation
01787 274475

- INSURANCE BACKED GUARANTEE
- 10 YEAR WARRANTY
- FENSA APPROVED
- ENERGY EFFICIENT

sales@greenglaze.co.uk www.greenglaze.co.uk 55 High Street, Halstead, Essex CO9 2JD

Tobermore
REGISTERED PAVING CONTRACTOR

COUNTRYSIDE
DRIVEWAYS

HOT TAR & CHIP

START OF THE SEASON
£20 per sq mtr
Discount For Larger Areas

Golden	Light Colour Pea	Grey Granite

**CAN BE APPLIED TO OLD TARMAC SURFACES
HARDCORE, ROAD PLANINGS, CONCRETE, GRAVEL**
IF NO SURFACE IS PRESENT, WE CAN INSTALL A SUB-BASE

**THE AGGREGATE IS EMBEDDED INTO THE HOT BITUMEN &
THE STONES STAY IN PLACE UNLIKE A GRAVEL DRIVE**

OUR DRIVEWAY SERVICES INCLUDE

- **BLOCK PAVING**
- **TARMAC**
- **RESINBONDED**
- **TAR & CHIP**
- **SURFACE DRESSING**
- **POT HOLES**
- **DRIVEWAY REPAIRS**
- **DRAINAGE**
- **PRESURE WASHING**

FREE ESTIMATES

f SEE OUR WORK & REVIEWS ON FACEBOOK & INSTAGRAM

www.countryside driveways.co.uk

01787 860045 OR 07393 989560

NOTES FROM THE EDITOR

The deadline for things to go into the next Gosfield Grapevine magazine is:

Friday, 22nd May, 2026

Anything sent in after this will be put forward into subsequent magazines. If you would like to advertise your community event, club, or business, and for anything Grapevine related, please contact the Gosfield Grapevine editor at:

grapevine@gosfieldparishcouncil.org

DATES TO NOTE (see also page 39):

Good Friday, 3rd April – Easter Egg Hunt (playing field)

Saturday 4th April - Table Top Sale 10:00am to 1:00pm

Sunday, 5th April – Easter Sunday

Monday, 6th April – Easter Monday [Bank holiday]

Thursday 9th April - Braintree Wildlife Trust (evening)

Saturday 18th April - Gosfield in Bloom quiz night

Thursday, 23rd April – St. George's Day

Saturday, 2nd May – Romford Dog Track coach trip

Monday, 4th May – Bank holiday

Thursday 7th May - Essex County Council election (Bernard Brooks Room)

Thursday 7th May - Braintree Wildlife Trust (evening)

Monday, 11th May – re-scheduled parish council meeting

Saturday, 23rd May – mini beer festival (social club)

Sunday, 24th May - mini beer festival (social club)


Monday, 25th May – Bank holiday

Saturday, 20th June – Summer Fete (Gosfield School)

Saturday, 4th July – Gosfield Fete

Chilly Dippers is on Fridays 12.30-1.30 and Sundays 8.30 and 9.00 – beginners will need an induction – booking in via FB @Gosfieldlakeopenswimming

COMMUNITY DEFIBRILLATOR

Location and Maurice Rowson Hall, Church Road, 

Post Code: Gosfield, CO9 1TL

ACCESS CODE:

What3Words

location: “bedding-framework-elephant”

C159X

Please note that a 999 call must be made before attempting to access the defibrillator.



CHAIRMAN'S NOTES, Tricia Edwards:

The Parish Council held its annual parish meeting on 23 March and the following is an extract from my Chairman's report:

2025/2026 has yet again been a busy and eventful year for Gosfield Parish Council.

The open space land at the top of Meadway is still not yet owned by the Parish Council. Once Braintree District Council are satisfied that all the developer's conditions have been met, then this should take place by July at the latest.

We are very pleased that the skate ramp which was installed late last year is being well used. This was made possible by Section 106 moneys/grants and at no cost to the Parish Council.

Allotments - Cllrs Strudwick and R Edwards have been holding regular meetings with the allotment holders and discussing an extension to the watering system, to be paid mainly by Section 106 moneys.

Gosfield Nature Reserve – again Cllrs Strudwick and R Edwards have held regular meetings with Stephen Westover, our nature reserve warden and a lot of work has been done this year to improve the nature reserve. Thanks must go to Cllr Chris Siddall and Cllr Peter Schwier for their grants for a lot of this work. We have had problems in the nature reserve this year in that we have had camper vans etc parking overnight and leaving litter, etc. We did put up a sign saying that camping and overnight parking was not allowed but unfortunately this was removed. We are in the process of erecting another sign in the hope that this will deter unwanted visitors.

Our neighbourhood plan is progressing slowly but surely and we are nearly at the stage of a village referendum.

The Kings Head freehold is up for sale and we are looking into the possibility of applying to make the Kings Head a community asset.

Looking forward, the playing field gets very boggy with games unplayable at certain times of the year. The remedy is drainage of the playing field by installing French drains, Moling and re-seeding. We hope that Braintree District Council will agree our plan for these works which can then be funded from Section 106 money from building development. Following this, funding is now in place to re-surface the car park and the scheme has been agreed by Councillors.

I would now like to thank our staff for all their hard work during the year, Diane Jacob, Fiona Martin and Christine Snowdon.

I would also like to thank Alan Summerland, the editor of the Grapevine magazine and Matt Jarvis who is our handyman.

Special thanks must go as always to Chris Siddall, our County Councillor, and Peter Schwier, our District Councillor for their support during the year.

Finally, I would like to thank all our wonderful village volunteers, without whose help and support our shop, clubs and events would not be able to happen.

GOSFIELD PARISH COUNCIL:

ROLE:	NAME:	CONTACT INFORMATION:
Parish Clerk	Diane Jacob	5 Crocklands, Greenstead Green, CO9 1QY parishclerk@gosfieldparishcouncil.org 07907-631172
Chairman	Tricia Edwards	Home Farm House, CO9 1RZ tricia.edwards@gosfieldparishcouncil.org 01787-472958
Vice Chairman	Bob Waters	21 Meadway, CO9 1TG bob.waters@gosfieldparishcouncil.org 01787-473863
Councillor	Maggi Pawsey	Tye Beams, The Street, CO9 1TP Via the Parish Clerk 01787-472967
Councillor	Carol Betty Hough	13 Braintree Road, CO9 1PR Via the Parish Clerk 01787-477208
Councillor	Joanne Lisa Colyer	13 Nuns Meadow, Gosfield, CO9 1UB joanne.colyer@gosfieldparishcouncil.org 07894-577629
Councillor	Tony Strudwick	17 Park Cottages, Gosfield, CO9 1TP tony.strudwick@gosfieldparishcouncil.org 07505-825635
Councillor	Richard Edwards	Home Farm House, CO9 1RZ richard.edwards@gosfieldparishcouncil.org 01787-472958
Councillor	* 2	Volunteers needed !

For anything Parish Council related, please contact the Parish Clerk, as above.

Bin Collections:

Green circle – green bin [if paid], clear sacks and food bin;
Grey square – grey bin and food bin

The recycling bins - regime will change in June, 2026 4

PARISH PONDERINGS - FROM ST. CATHERINE'S CHURCH

The Church at Easter.

As we approach Holy Week with all the horrors of Christ's arrest, trial, crucifixion to the revelation and joy of the resurrection it is a time, perhaps, to stop for a moment and reflect on the highs and lows of our own lives.

My family and I have now lived in the area for seven months. I can't believe how fast the time has gone by. We plan to serve in the parishes of Gosfield, Greenstead Green and Halstead for roughly 10 years and we're already half way through the first one.

A lot has happened in the last year, much of which the communities we serve will identify with. It was last March my Mum died. Last year I saw the advertisement for the role of Team Vicar here and the in the same year that I was offered the role. In the last year that my fourth granddaughter was born, Remy, to our daughter and her husband and also the year in which my father was diagnosed with an inoperable brain tumour.

Since we arrived here, I walked along side some of those grieving for loved ones as I have grieved; smiled and laughed along-side those celebrating at school services and community events as we have celebrated and been able to reflect on happy times as I've listened to the reminiscences of congregation members while also remembering happy times with my own Family.

There will be folk that feel compelled to come to church this Easter, just like they do at Christmas. Some will have had years perhaps similar to ours filled with a mixture of laughter and tears and all will be welcome.

The chocolate Easter eggs will only last for so long but a warm welcome at your parish church of St Catherine's lasts all year round - where ever you are on your journey. So, we will wait for you to come and see us when you're ready, without agenda or expectation, but with compassion and understanding of what it means to be human.

God bless you all, Rev Sue Goldsmith

GOSFIELD COMMUNITY SHOP:

We always welcome new volunteers so, if you would like to join an award-winning team, leave your details in the shop and our Volunteer Coordinator, Jo, will contact you to arrange training, etc.



GOSFIELD COMMUNITY SHOP:

Opening Times:

Monday to Saturday: 8 am to 4:30 pm

Sunday: 8 am to noon

ST. CATHERINE'S CHURCH, GOSFIELD:

We are part of The Three Saints group of parishes along with St Andrew's Church, Halstead, and St James' Church, Greenstead Green; and belong to the wider Halstead Area Team Ministry. Everyone is welcome at your local parish church. Services for the next two months at St. Catherine's and other churches are as follows:

Day Date	Time	Service	Location
Holy Week			
Maundy Thursday , 2 nd April,	7.30pm	Holy Communion	St Catherine's
Good Friday , 3 rd April	1pm	Hour at the cross	St Catherine's
Easter Day , 5 th April	10.30am	Easter Communion	St Catherine's
Sunday 12 th April	10am	Team Service, St Andrew's, Earls Colne	
Sunday 19 th April	11am	Holy Communion	St Catherine's
Sunday 26 th April	10.30am	Morning Worship	St Catherine's
Sunday 3 rd May	10.30am	Holy Communion	St Catherine's
Sunday 10 th May	10.30am	Morning Worship	St Catherine's
Ascension Day			
Thursday 14th May	10am	Holy Communion	St James, G Green
Sunday 17 th May	11am	Holy Communion	St Catherine's
Sunday 24 th May	10.30am	Morning Worship	St Catherine's
Trinity Sunday,			
Sunday 31st May	10am	Team Service, St James Greenstead Green	

Refreshments – usually including home-made cakes and savouries – are served after Sunday services at St Catherine's.

For those who prefer to access an online service, each Sunday at 10am Three Colnes Churches live stream via Facebook (The Three Colnes), or You Tube (HalsteadAreaTeam@halsteadareateam3650). There is also the Daily Hope phone line, which offers familiar hymns and prayers free of charge if you dial 0888-804-8044.

For more information on services and activities in the Three Parishes, please contact the parish office on 01787-478471.

Monday "Cuppa" Club

In

The Maurice Rowson Hall

Afternoon tea, sandwiches, cakes, coffee and tea all for just £2
Plus good conversation, raffle and entertainment

First Monday of every month at 2pm

Looking forward to seeing you all there.



MATTHEW D JARVIS

GENERAL BUILDER PROPERTY MAINTENANCE

ESTABLISHED 1992

Extensions • Block Paving • Brickwork • Groundwork
Carpentry • and all your building needs

All Work Guaranteed

Tel: 01787 475561 Mob: 07798 846051

4 Highlands, Gosfield, Halstead, Essex CO9 IPH.

Gosfield Rainbows



Places available for Girls aged 5-7

Meet on a Monday 4.30pm-5.30pm

Term time only

Rainbows is exciting, messy, friendly and
lots of fun!

Come join us!

Call Stacey, Rainbow Leader

On

07814 233219

Or look online www.girlguiding.org.uk to
register your daughter TODAY!

Gosfield Brownies



Places available for Girls aged 7-10

Meet on a Monday 6.00pm-7.30pm

Term time only

Introduce your daughter to a world of
new adventures,

challenges and fun!

Call Gill, Brown Owl

On

07801265603

Or look online www.girlguiding.org.uk
to register your daughter TODAY!

PARISH COUNCIL WORKING GROUPS:

Group / Committee:	Councillors:
Nature Reserve	Strudwick, R. Edwards
Playing Field Management Committee	T. Edwards, Hough, Pawsey
Allotment Officer	Strudwick, R. Edwards
Footpaths	Colyer
Finance	R. Edwards - plus all other councillors
Appeals	Colyer
Children's Play Area	Hough, Strudwick
Planning	Waters, Pawsey
Grapevine Editor	Alan Summerland
Tree Warden	T. Edwards
Maurice Rowson Village Hall	Strudwick - to attend M R Hall meetings
Car Park drainage/surfacing	TBA
Wethersfield Scrutiny Committee	Strudwick - to attend WSC meetings
Information, minutes and agendas:	www.e-voice.org.uk/gosfield

MEMBERS OF OUTSIDE BODIES:

Braintree Association of Local Councils [BALC]	Tricia Edwards
Coffee Rooms Trust	Waters
Rowson Perpetual Memorial Fund	Pawsey, Hough, Colyer

Member of Parliament: Mr James Cleverly MP - or: Braintree Conservatives Association Office:	House of Commons, London, SW1A 0AA james.cleverly.mp@parliament.uk Suite 11, The Centre, Lakes Industrial Park, Braintree, CM7 3RU
Essex County Councillor: Cllr. Chris Siddall	Essex County Council, PO Box 11, CM1 1LX cldr.chris.siddall@essex.gov.uk Office: 01376-562288
Braintree District Councillor: Cllr. Peter Schwier Gosfield & Greenstead Green Ward	Long Fen, Great Maplestead, CO9 2RJ cldr.pschiwier@braintree.gov.uk 01787-460473

Village Post Office – Community Shop
Open on Wednesdays from 2 pm to 4 pm

MAURICE ROWSON HALL – SCHEDULE OF ACTIVITIES

Church Road, Gosfield, CO9 1TL

WHAT'S ON AT THE HALL IN APRIL AND MAY ?

Regular bookings:

Mondays: Aerobics 9:15am to 10:15am, Pilates 11:00am to 12:00pm, Rainbows 4:45pm to 5:45pm, Brownies 6:00pm to 7:30pm, Bowls 8:00pm to 10:00pm.

Tuesdays: Yoga 9:45am to 11:30am, Hummingbird Hub 12pm to 5pm, Karate 6:00pm to 7:00pm. Yoga 7:00pm to 8:30pm.

Wednesdays: Wiggles and Giggles 9.30am to 11.00am, Fitness Class 6pm to 7pm
Bowls 7:00pm to 9:00pm.

Thursdays: Sunnydays 9:00am to 12:00pm

Fridays: Pilates 10:45am to 11:45am Guides and Rangers 7:00pm to 8:30pm

Once-a-month bookings:

Mondays: Cuppa Club 2:00pm to 4:00pm (1st Monday of the month)

Thursdays: Village Circle 2:00pm to 4:00pm (3rd Thursday of the month)

Gosfield Girls WI 7:30pm to 9:00pm (3rd Thursday of the month)

Contact details for Rainbows, Brownies, Guides, Rangers, Bowls, Village Circle and Gosfield Girls WI can be found elsewhere in this Grapevine magazine.

One-off bookings for April and May:

Saturday 4th April. Table Top Sale 10:00am to 1:00pm

Thursday 9th April. Braintree Wildlife Trust (evening)

Saturday 18th April. Gosfield in Bloom quiz night

Thursday 7th May. Essex County Council election (Bernard Brooks Room)

Thursday 7th May. Braintree Wildlife Trust (evening)

For further information on the Maurice Rowson Hall, please contact the Booking Clerk, Amanda Degnan, on 07308 530638 or by emailing rowsonhall@gmail.com

**Free Wi-Fi available at the Maurice Rowson Hall
courtesy of Gigaclear**

The Chernobyl nuclear power plant disaster happened on 26th April, 1986 – 40 years ago. The radiation legacy will last many more centuries !

Stephen Hall
Your Local
Oven Cleamer

Get that cooker **GLEAMING** before you cook

Need your Dirty Oven, AGA Or Range Gleaming Again?

A Professional Deep Cleaning Service Which Will Have Your Cooker Looking 'Like New'
We Don't Just Clean Ovens...We GLEAM Them!

Covid-19 Safe Cleaning : Includes post-clean sanitisation

Community Magazine Offer!
\$5.00 Off Your Next Clean
With all areas cleared before 1st October '21

"Oven cleaned by Stephen to the standard I bought it at. Highly recommend his services. Would use him again." **Stella Shaddock**

Call and Book Today On 01787 852112

Check out our 3100+ reviews at www.ovengleaners.com
Ovens | Ranges | AGAs | Hobs | Extractors | Microwaves | BBQs

STEPHENS RESPOND IN PARTNERSHIP WITH... **BOYDELL DEVELOPMENTS**
07772914769

WHAT WE OFFER.

- NEW BUILDS
- GARDEN ROOMS
- SHEPHERDS HUTS
- CARTLODGES
- EXTENSION
- GARAGE CONVERSIONS
- MEDIA WALLS
- BESPOKE WARDROBES
- KITCHENS

PLEASE FEEL FREE TO GET IN TOUCH

Email: boydelldevelopments@gmail.com
gregstephensbespoke@gmail.com
Call: Greg 07903570488
Louise 07772914769

Trust Handy King to keep your outdoor spaces looking their best all year round.

Services also includes comprehensive garden waste clearance services, ensuring your garden remains clutter-free.

www.handyking.co.uk
f @handykingessex

If you need to find out more about my gardening services please head to my website or contact me.

Graham King
07923 445128

When your house needs a clean

Do not shout, do not scream !

Just call for Daisy

and she'll make it gleam !

Phone Daisy on 07919-993363

CPH

- Oil, LPG & Gas boiler specialists**
Servicing & Repairs
New Boiler & Heating Systems
- Plumbing Repairs and Maintenance**
- Electrical services by NICEIC certified electricians**
- Air Conditioning and Renewables**

Reliable local heating engineers covering Colchester & surrounding villages!

A Trustworthy family run business specialising in Oil, LPG, Gas, Electrical, Plumbing, Air-con & Renewables.

- ★ All calls answered personally
- ★ Confirmed booking times
- ★ 12-month workmanship guarantee
- ★ No job too small!
- ★ Call us or visit our website to find out more!

01206 694996

sales@chelmsfordplumbingandheating.co.uk | chelmsfordplumbingandheating.co.uk

safe OFTEC MCS REFCEM RECC

 **The Hawthorns**
BRAINTREE



**RETIREMENT LIVING,
THE COMFORT OF HOME**

The Hawthorns' all-inclusive rental model encompasses all the features you would expect of a luxury retirement community with certainty, easy planning, and flexibility. Enjoy a worry-free and active retirement at the Hawthorns.

Scan the QR code to see our upcoming events
01376 778214 | hawthornsretirement.co.uk

Meadow Park | Tortoiseshell Way | Braintree | Essex | CM7 1TD



**Anglian
Plumbing**



PLUMBING HEATING ELECTRICAL ENGINEERS

All GAS OIL LPG & ELECTRIC – Heating Fixed Repaired or Replaced

- New boilers with 10 year warranty • Landlord gas certificates
- New bathrooms & kitchens designed & installed • Fault finding - no problem
- Radiator Power flushing • New taps • Sinks • Baths • Leaks fixed fast!
- All work fully guaranteed and insured

Tel: 01787 278511 | 07825 348 536

www.anglianphe.co.uk



10% DISCOUNT FOR OAPs

£10 discount if we are late for an appointment

**Anglian
Electrics**



For all your Electrical Needs

- Fault Finding • Diagnosis
- Garden lights, sockets, garage, sheds, garden rooms & offices
- Faulty or New socket • Full rewire • New Fuseboxes
- EV charging point installation

Tel: 01787 278511 | 07825 348 536

www.anglianphe.co.uk • Local Family Business



10% DISCOUNT FOR OAPs

£10 discount if we are late for an appointment

Halstead, Braintree & Haverhill Physiotherapy & Sports Injury Clinics

Reduce pain & promote healing

Specialising in the treatment & rehabilitation of spine & joint problems, muscular issues, headaches, dizziness, back & neck pain.

Musculoskeletal, Vestibular & Neurological Rehabilitation from our team of expert practitioners.

Evening & Saturday appointments are available at all three clinics.

www.halsteadphysiotherapyclinic.co.uk

2 Market Hill, Halstead CO9 2AR

01787 478789



KÔR PILATES MAT AND REFORMER STUDIO

Small group classes for all abilities
Book online & view full timetable at

korpilates.co.uk

Reformer £15 per class

Mat £8 per class

Discounts on block purchases

For 1-2-1 and private sessions email
hello@korpilates.co.uk

@korpilatesuk

Breen's Gym, Sible Hedingham, CO9 4HZ

Christopher THE LOCKSMITH

ARE YOUR LOCKS BEHAVING BADLY?

We Value Old Fashioned Customer Service
A Local Trusted Family Business Since 1989

- Specialist in UPVC & Wooden Doors
- No Call Out Charge
- No Fix No Fee
- All Work Fully Guaranteed
- 10% Senior Citizen Discount



For More Advice & Help Call Christopher:

07772 111 222

www.christopherthelocksmith.co.uk

Gosfield Lawn Tennis Club

New members are welcome of all ages and standards.

Professional coaching sessions available.

Adult membership starts at £54 for the first year.

For more information, contact our Secretary, and look at our website:

www.gosfield-tennis.co.uk

MEMORIES and such like from LINDA. (Marlow, Richardson) KEMP

Here we are again as I type in early Spring. The sky is white but it was blue the previous week, still we have the occasional frost but an old gardener once told me to expect them until end of May so I never started planting until June 1st but nowadays we can never be sure when is the best time. The world is changing, climates are changing and our locality with new builds is too.

Gosfield is still a good place to live. Thanks to an efficient Parish Council who keep a sharp eye on the dictates of District Councils and Government.

I had to study an exam course on Central and Local Government whilst I first worked out of Braintree Town Hall. I was sharing a desk temporarily there as my office as newly appointed first Admin. Assistant to the Civil Defence Officer in this area was being renovated in the old Drill Hall in Victoria Street. I can see every inch of the place in my memory the day we moved in and the smell of the new paint that gave me headaches for weeks, alongside a smaller office where my boss Barbara Everitt CBE occasionally resided and smoked 40 a day when not at the head office in Redbridge. I sometimes sat at my desk with sash windows wide open in all that winters' weathers, still wearing my coat and my Nan's fingerless gloves and a woolly hat until I had aired the paint/ cigarette fumes out ...I sprayed 4711 Eau de Cologne everywhere. Daily, the Caretaker of the Drill Hall would ring up to my desk and say there was coffee made in his office so I could then open all the windows and disappear for a warm break and he would talk of his Navy days. Men made many life adjustments after WW2.

I daily used to admire the interior of the Braintree Town Hall in Market Square (you can see inside I believe as it is no longer the Council Offices) our Gosfield Milk provider in the pre bottled milk years (when it was poured into your own container as you stood at the gate) from a Churn in the rear of an old van do you remember that? He was ERNIE SHADRACK who lived just past our Lake and came to this area to 'Plaster the interior of the Town Hall with all its ornateness'. He fell in love with the area and eventually bought land along past Gosfield Lake and built a lovely house with tennis courts etc. Maybe the older members recall his wife Grace who after his death moved into a bungalow in Greenfields.

Continued 9

MEMORIES, continued:

Did you know Hilda (nee Gray) and Vic Saunders ? Evan Vero his real forenames, well Hilda's mother was a skilled needlewoman and worked nights for the Foley House Courtaulds / Taylors in the days when carriages brought guests to stay the night for functions and in bad weather the long gowns etc would have the lower trim unpicked cleaned and stitched back on ready for the morning. The Foley House for new residents of Gosfield is on your Right side just beyond the traffic lights junction Braintree bound along the Gosfield / High Garrett road. Ellen Taylor married Samuel Courtauld who bought Gosfield Hall in 1854 after their only daughter died. He bought the Hall solely so that his wife could see her daughters resting place at our St Catherines and be consoled.

Hilda Gray's sister and brother lived by Petersfield (Pittifuls) Lane. Her sister Ellen married Willoughby Roope. They had 2 children Rosemary and Peter. I used to cycle to early church services with Peter. Rosemary Roope and Robin's Millars' wedding was I think summer 1960. I recall one of the Lowe daughters wed the same year and we were all were paid 2 shillings each, for singing in the choir. I remained in contact with elderly Mrs Roope when she relocated to Halstead. Rosemary Millarl saw regularly until a few months before Sheila Coppock (of Local building firm whom I was a Bridesmaid for) died. They'd been lifelong pals but it seemed that Rosemary was sadly becoming confused so didn't attend.

I am told ROSEMARY MILLAR nee ROOPE has recently passed away so too has another long established and fondly remembered villager JANET TURBIN. Condolences to all families.

Sorry that I'm leaving the final SEWELL memories of being in Gosfield during WW2. Until the next issue as I cannot use the note book computer at the moment that they are stored on ... I am not a technophobe but it's being sorted out by a friend when hopefully back from travels. Big Delays on that and If you are affected by current problems also regards flights and planned holidays then I wish you luck and safe eventual travels.

When I was at Gosfield Primary School we would be practising MAYPOLE dancing from EASTER ready for the MAY DAY event when the school chose its MAY QUEEN, but first we had old newspapers to make papier mache Easter Eggs and decorate them. Is that a thing these days? Mothering Sunday came and went with memories of clutching posies of wild primroses (now frowned upon) and presenting them after Church to Mum with squishy stalks but she had a little fingertip depth circular vase which she cut and put them in with sweet smelling violets from a patch all self-seeded beside our garden shed with the help of birds no doubt. ALL MEMORIES that cost nothing at all.

THE GOSFIELD PLAYERS
gosfieldplayers@gmail.com

Ongoing planning applications for building works are as follows:

Variation of Condition 2 (Approved plans) of approved application 23/00830/HH granted 15.05.23 for: Single storey rear extension Variation would allow alterations to fenestration. Church Cottage Church Road Gosfield Essex CO9 1UD, Ref. No: 26/00586/VAR.

Proposed single-storey rear/side extension, new chimney to replace existing, roof windows to existing roof, new roof finishes, and proposed porch. 53 Halstead Road Gosfield Essex CO9 1PG, Ref. No: 26/00570/HH.

Demolition of existing single storey rear extension. Byford Cottage Church Road Gosfield Essex CO9 1TL, Ref. No: 26/00527/LBC.

Application for Certificate of Lawfulness for proposed development-Proposed cart lodge and workshop. Woodlands Parkhall Road Gosfield Essex CO9 1SQ, Ref. No: 26/00400/PLD.

Application for Certificate of Lawfulness for proposed development- Siting of a twin-unit mobile home. Hope Cottage Hedingham Road Gosfield Essex CO9 1UP, Ref. No: 26/00256/PLD.

GOSFIELD CARPET BOWLS CLUB

Membership within the club remains steady at 21 as the club continues to hold club nights on a Monday evening (8pm-10pm) and on a Wednesday evening (7pm-9pm) within the Rowson Hall, Gosfield. Whilst the club is not playing within the Essex Carpet Bowls Association Winter League program this year, we are continuing to play competitive "friendly" matches against local clubs within our area.

This is a trial arrangement for this year and we may well return to playing within the Essex CBA. Winter League again in the future depending upon our members decision.

We look forward to playing against local clubs that we had lost contact with over the years when playing within the Essex CBA Winter League. When playing the "friendlies" the matches are played to the same Essex CBA rules, but are played in a more relaxed, yet still highly competitive manner.

Should you wish to try your hand at playing carpet bowls, which is played during a club night both competitively and a more relaxed "friendly" manner, you are welcome to attend a club night on a Wednesday evening for a trial game.

Paul M Nicklin, Gosfield Carpet Bowls Club.

There were reportedly nine rings of hell, according to Dante's Inferno: Limbo, Lust, Gluttony, Greed, Anger, Heresy, Violence, Fraud, and Treachery !

EDENPRINT



Leave a
Lasting
Impression

- Leaflets • Posters • Booklets
- Signs • Banners • Notepads
- Custom Shape Labels
- Business Card • Letterheads
- Mugs • Greetings Cards
- Raffle Tickets • NCR Pads • Plans



sales@eden-print.co.uk • www.eden-print.co.uk

Unit 7 Rippers Court, Sible Hedingham, Essex - 01787 469628

We are always interested in employing local people, please contact us at HR@transporter-eng.co.uk for our current vacancies, or drop a CV into us at our main office.



TRANSPORTER
Engineering

34



GARDEN MACHINERY

Bell Tack Works, Middleton Road
Sudbury CO10 7LJ

01787 375 194

07483 145 555

info@rnrgardenmachinery.co.uk

- Sales, services and repairs for all garden machinery
- Sharpening service for: chainsaws, lawnmower blades, shears
- We stock coal, logs and kindling

AUTHORISED DEALER FOR:



**EXCLUSIVE
GRV READERS'
OFFER**

**5% OFF
EVERYTHING***

*Offer applies to all purchases.
Show this voucher to apply discount.
One Use per customer.

Mr Odd Job & Son

General Home & Garden Maintenance

Paul Scott

M: 07712 314 434

I'm Here For The Jobs In Life That Just Don't Get Done!

11

KJL Home Improvements

07557 586602 / 01787 272 543
kevin.lucas@talktalk.net

- ✓ Kitchens
- ✓ Bathrooms
- ✓ General Building
- ✓ Renovations and Repairs



Home Excellence

KJL Home Improvements, a family-run company in Halstead, Essex, with 20+ years of experience, specialising in home renovations, conversions, and extensions.

Get your **FREE NO - OBLIGATION** quotation today!

For more information, visit:
kjllhomeimprovements.com



GOSFIELD Exterior Cleaning

Certified pressure washing services across Essex

07481 799 955

Gosfield.ec@gmail.com



www.gosfieldexteriorcleaning.com



C Jarvis Contracting

- Hedge Cutting (seasonal)**
- Topping**
- Grass Harrowing**
- Hay Making**
- Pasture Aerating**

Email: c.jarviscontracting@gmail.com
Phone: 07485 204069

Other Services are available



Delivering complete
wastewater solutions

Installs | Homebuyer/seller surveys
Servicing | Repairs | Emptying

owlshall.co.uk

Service Department:
01371 504048
service@owlshall.co.uk

Installations Department:
01371 850698
sales@owlshall.co.uk

Visit our
online store:
owlshall.co.uk/shop
or scan the QR code



Formed in 1975, the Charity is an Educational Trust that administers funds from investments, in the form of grants to local young people.

Are you studying for a degree or about to start a degree course?

The Earls Colne and Halstead Educational Charity offers Resource Grants to young people studying undergraduate and postgraduate degree courses (excluding one or two year Foundation courses and including recognised level 4 courses).



- To qualify, applicants must:**
- be aged between 18 and 25
 - have attended school or have lived, for at least one year, within the Charity's area of benefit (catchment area).

Note: Grants are not means-tested and anyone can apply as long as you meet the above criteria.

Find out more:

More information about the Charity and application forms can be found on our website – www.echec.org.uk.
 Alternatively email - earlscolnehalstead.edcharity@yahoo.co.uk .

Formed in 1975, the Charity is an Educational Trust that administers funds from investments, in the form of grants to local young people.

Educational Grants Available

The Earls Colne and Halstead Educational Charity offers grants to individuals, schools and voluntary groups and is keen to encourage applications to provide support for suitable projects that would benefit local young people

Projects previously funded include: the purchase of equipment such as mini tennis nets, specialist equipment for those competing in sports or arts, first aid training, expeditions and guide/scout events



- To qualify, applicants must:**
- be aged between 5 and 25*
 - have lived or attended school for at least one year within the Charity's area of benefit (catchment area) *

* Voluntary groups must cater for young people in this age range and be located within our catchment area

Find out more:

More information about the Charity and application forms can be found on our website – www.echec.org.uk.
 Alternatively, email: - earlscolnehalstead.edcharity@yahoo.co.uk

Gosfield Guides



Places available for Girls aged 10-14

Meet on a Friday 7.00pm-8.30pm

Term time only

Fun filled evenings with friends

Learn new skills whilst

Challenging yourself!

Call Gill, Guide Leader

On

07801 265603

Or look online www.girlguiding.org.uk
 to register your daughter TODAY!

Gosfield Rangers



Places available for Girls aged 14-18

Meet on a Friday 7.00pm-8.30pm

Term time only

One big adventure after another,
 Space to develop and grow whilst

Having fun!

Call Gill, Ranger Leader

On

07801 265603

Or look online www.girlguiding.org.uk
 to register your daughter TODAY!

VILLAGE CIRCLE CLUB

Cherry Mullins gave us a very interesting talk at Village Circle's February meeting on her experiences as a tour guide. She worked mostly in France and, being fluent in French, guided tourists around Paris and well as many other French cities. This was followed by a very swift Annual General Meeting when our chairman, Hazel, gave a brief run through the previous year's events and reminded members that annual subs were due again.

Peter Tatham was the speaker at our March meeting, giving a brief history of Granchester then moving on to Granchester Vicarage, built in 1684/5 and owned since 1979 by Lord and Lady Archer. Poet Rupert Brooke lodged there between 1910-13 and wrote his poem "The Old Vicarage, Grantchester".

For April's meeting, on the 16th, Gaynor Edwards will speak about her hobby of working with stained glass and we have a musical afternoon with Lorraine Ely on May 21st.

If you'd like to know more about Village Circle, please come to one of our meetings in The Maurice Rowson Hall, Church Road, Gosfield from 2pm - 4pm on the 3rd Thursday of each month, visitor fees just £3, or call Ann on 07773-140216 for more information.

Rowson Perpetual Memorial Fund

Registered Charity Ref. No. 284176

Annual Report for Year to 31st December, 2025

The Fund Trustees meet on the second Monday in the following months: February, May, August and November and applications for grants are required a minimum of two weeks before each meeting. To obtain an application form please either phone Dave Jarvis on 01787-474562 or email:

davjar33@gmail.com

FINANCE, £:

(Note: value of invested funds is subject to market fluctuations)

<u>Income for the year to:</u>	<u>31/12/2025</u>	
COIF Dividends	21,621.91	
Bank Interest	3,318.43	
Return from VE80 celebration	500	
Totals	25,440.34	_____

Expenditure, £:

Grants made totalled	32,712.59
Expenses	43.59

Assests and Liabilities:

	<u>31/12/2025</u>
COIF Permanent Endowment Funds	729,280.58
COIF Accumulated Income Units	7,148.52
Bank balances as of 31/12/25	79,259.26
Total	815,688.36

Please note:

Liabilities still to be paid as of 31-12-2025: £30,000 to Gosfield Parish Council for repairs to playing field car park. This will reduce year end bank balance to £49,256.26.

Co-opted Trustees (5 year period): Nominated Trustees (4 year period):

Mrs M Adams	Parish Council nominated:
Mr. D Jarvis	Mrs. A M Pawsey
Mr. M Smith	Mrs. J Colyer
Mr. A Mair	Mrs. C Hough
Mr M Ford (*)	Mr. W H Pasfield (GPCC-nominated)

(* re-elected to serve for a further five-year period from November 2025)

Prepared by Mr W H Pasfield, Chairman, 3rd March, 2026.

PRESS RELEASE

Halstead Community Arts Centre Project Accelerates: Architects Appointed, Funding Applications Underway, and New Charity Formation in Progress

The team behind the Halstead Community Arts Centre — an ambitious extension of the successful Empire Theatre — is pleased to announce several major steps forward in the development of this landmark project for the town and its surrounding villages.

Specialist architects have now been appointed to lead the next stage of design work, marking a significant milestone in bringing this long-awaited community facility to life. Alongside this, the newly formed Halstead Charitable Incorporated Organisation (CIO) is currently awaiting registration with the Charity Commission, establishing the formal structure needed to deliver and sustain the project.

The new centre will provide creative studios, flexible community rooms, youth spaces, wellbeing activities, and a welcoming café/bar, offering all communities access to high-quality cultural and social opportunities close to home. The project aligns strongly with Arts Council England's Let's Create strategy (2020–2030), supporting creative people, cultural communities, and ensuring town and rural areas have access to inspiring cultural spaces.

A Vision for Halstead and Its Villages

Chair-designate Jim Bond said:

"This is Halstead's long-awaited opportunity to realise the ambition of having a community centre in the heart of the town. This centre will combine all the best that the arts can provide, along with spaces for the community to use for both formal and informal activities."

Funding Applications and Support Needed

The project team is now preparing a series of grant applications to regional and national funders to support the next phase of development. To strengthen this effort, the team is calling on Parish Councils, community groups, and local residents to help raise awareness, build momentum, and support fundraising initiatives.

Call for Volunteers

As the project grows, the Halstead CIO is seeking talented and enthusiastic individuals to join the team and help drive the project forward.

Roles may include:

- Community engagement
- Fundraising and events
- Communications and publicity
- Governance and project support

If you're passionate about helping shape Halstead's future, we'd love to hear from you, please contact:

townclerk@halsteadtowncouncil.org.uk / 01787-476480

A Shared Community Effort: "We're asking our local parishes and residents to join us in bringing this vision to life," added Bond. "Together, we can create a space where creativity, community and connection can thrive for generations to come. For more information or to get

involved, please contact: **townclerk@halsteadtowncouncil.org.uk**

<https://www.halsteadtowncouncil.org.uk/news-events/>

Halstead Community Arts Centre – Parish Briefing Sheet -

Project Overview

- Extension of the successful Empire Theatre Halstead
- Creation of a new Community Arts Centre serving Halstead and surrounding rural villages
- A welcoming hub for creativity, learning, wellbeing and social connection

Why This Matters for Rural Communities

- Provides access to cultural and creative opportunities without needing to travel to towns or cities
- Offers warm, safe, inclusive spaces for young people, families, older residents and community groups
- Supports rural isolation reduction through shared activities and social spaces
- Creates new opportunities for local clubs, societies, workshops and events

Alignment with Arts Council England – Let’s Create (2020–2030)

- Creative People: Everyone has the chance to be creative and express themselves
- Cultural Communities: Strengthening local identity and pride through shared cultural spaces
- A Creative & Cultural Country: Ensuring rural areas have access to high-quality cultural experiences
- The project directly supports ACE’s vision of place-based cultural development

What the New Centre Will Offer

- Creative studios for arts, crafts, digital media and performance
- Flexible rooms for meetings, clubs, classes and community groups
- A welcoming café/bar and social spaces
- Fully accessible design for all ages and abilities
- A home for youth programmes, wellbeing activities and intergenerational projects

Benefits to Parish Councils & Residents

- A shared cultural asset for all villages in the Halstead area
- New opportunities for local partnerships, outreach and community events
- A venue for parish-led activities, exhibitions and celebrations
- Strengthens local identity and supports village-to-town connectivity
- Encourages participation, volunteering and community pride

What We’re Asking From Parish Councils

- Publicity support: share updates in newsletters, websites and noticeboards
- Community engagement: encourage residents to take part in consultations and events
- Partnership opportunities: explore joint projects, outreach sessions and rural programming
- Advocacy: help champion the project across your parish
- Practical support: signposting, introductions, and local knowledge

What We’re Asking From Residents

- Share ideas, feedback and aspirations for the new centre
- Get involved in workshops, events and community design sessions
- Support fundraising efforts where possible
- Help spread the word across villages and community groups

Key Message

Together, we can create a vibrant, inclusive Community Arts Centre that strengthens Halstead and its surrounding villages for generations to come.

**1st Gosfield
Beavers, Cubs
& Scout Group**



Contact Steve Sudbury
on 07885-467712, or:
stephensudburygardens@gmail.com

1st Gosfield Scout Group

www.1stgosfieldscouts.co.uk

The 1st Gosfield Scout group is still open.

Scouting is open to both boys and girls, all are welcome.

All the Beavers and Cubs have been transferred to other local groups - Castle Hedingham, Halstead and Braintree.

We desperately need new leaders to volunteer to help run the group. If this is you, please contact Steve Sudbury on:

stephensudburygardens@gmail.com

Gosfield (Mobile) Library

Route 2 - Nuns Meadow, Monday,

9:45 am to 10:15 am:

2nd February

23rd February

16th March

27th April

18th May

8th June

Library - Halstead - Braintree

(Not open public holidays)

Monday

9am to 5pm

9am to 7pm

Tuesday

9am to 6pm

9am to 5:30pm

Wednesday

Closed

9am to 5:30pm

Thursday

9am to 6pm

9am to 5:30pm

Friday

9am to 5pm

9am to 5:30pm

Saturday

9am to 5pm

9am to 5pm

Sunday

Closed

Closed

The BDC new bin collection dates from June, 2026, include:

- Grey bins will be collected every three weeks
- Food caddy will be collected weekly (now collected from flats as well)
- NEW Glass, Metal and Plastic bin will be collected every four weeks (alternate with Paper bin)
- NEW Paper and Card bin will be collected every four weeks (alternate with Glass bin)
- Green Garden Waste bin will continue to be collected every two weeks (if paid for - no change).



Creative Curtains and Blinds Carol Partridge

Made-to-Measure Curtains and Blinds

Measuring Service Available

**For free advice and consultation
contact me at:**

07985-935805

curtainsandblinds.creative@gmail.com

Facebook / Creative Curtains and Blinds

Instagram / Creative Curtains Blinds

Join Gosfield Parish Council – Be a Voice for Our Village!

Do you love Gosfield and want to help shape its future?

We're looking for two new Parish Councillors to join our friendly team.

This is a fantastic opportunity to:

- Represent your community
- Support local projects and improvements
- Share your ideas and help shape village life
- Make a real difference right where you live

No previous experience is needed — just enthusiasm, a bit of time, and a passion for Gosfield.

To find out more or express interest, please email:

parishclerk@gosfieldparishcouncil.org

ST. CATHERINE'S CHURCH 50/50 CLUB

February Winners:	No. 19 Mrs. A Degnan	No. 81 Mr. D Jarvis
	No. 26 Mr. D Bedwell	No. 118 Mrs. M Pawsey
March Winners:	No.9 Mrs. Cornall	No. 51 Mr. Ashley Bishop
	No. 25 Mrs. K Sale	No. 128 Mrs. B Crouch

Anyone wishing to join, please contact **Hazel** on 01787-472593

Gosfield Girls WI

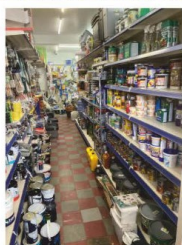
If you have an interest in joining us, then please come along for a taster session – first one is free! We meet for 11 months of the year at the Maurice Rowson Hall on the 3rd Thursday of each month at 7.30pm. We hope you can come along. All ladies are welcome.

DARKINS

SUPPLY STORES

01787 462536
darkins1967@gmail.com

A FAMILY RUN, INDEPENDENT HARDWARE
STORE IN SIBLE HEDINGHAM



OPEN Mon - Sat 0800 - 1730hrs
Closed Sundays & Bank Holidays
122 SWAN STREET SIBLE HEDINGHAM

IF WE DON'T STOCK IT, WE CAN GET IT



LMB

Lashes

LASH
ARTIST



SPECIAL OFFER
Brow Wax & Tint
£15

SPECIAL OFFER
Lash Lift & Tint
£30

07342 892548 maybeaney@icloud.com



P Crawford Contracting Ltd.



Commercial & Residential Services

We provide a range of groundworks and construction services, along with specialised and seasonal agricultural projects, tree management, hedge cutting, track grading, composting, vegetation management and site clearance.

Our residential offer includes driveways, patios, landscaping and fencing.

✓ CHAS Accredited.
We work alongside
ecologists too

✓ Safe, efficient and
professional service across
East Anglia & beyond

✓ 01787 277 710
info@pcrawfordltd.co.uk



www.pcrawfordltd.co.uk



Visit Martha's Tearoom, nestled in picturesque Greenstead Green Barns. Enjoy our selection of freshly brewed teas and homemade treats. Whether you seek a peaceful spot or a cosy gathering place, our tearoom is perfect. Join us Monday to Friday, 9 AM to 4 PM, or Sunday, 10 AM to 4 PM. For more info or to book a table, call 01787 703722. We look forward to welcoming you!

Address: Greenstead Green Barns, CO9 1QY
 Afternoon Teas, private events and catering available



The Gosfield Bloomers do their best
 At weeding, planting, and the rest
 Now some are getting on in years
 We really need more volunteers
 If you can spare a few odd hours
 Then come and help maintain the flowers

Please contact Mandy on 07876 805865 or Jan on 07769 040075



What's on at the Social Club in April and May

Saturday 2nd May



The Social Club are running a coach trip to Romford Dog Track leaving at 4:45pm (first race 6:42 pm). Tickets cost £25 which includes coach and entrance to stadium. If you are interested in going there are still a few places available.

Saturday 23rd May and Sunday 24th May,

The Social Club will once again be holding a Mini Beer Festival.



We will have a selection of local draught beers and ciders to sample. Burgers and sausages from our popular BBQ will also be available on Saturday and Sunday.



In Two Minds

There will be live entertainment on both days. On Saturday, **The Washed Up Folk Band** and **River Box Junction** will be providing the entertainment and on Sunday, local singing duo **In Two Minds** will be performing.

The club bar will be open to provide our usual range of drinks for anyone who isn't a beer or cider drinker.

Doors open at 1pm on both days.

For further information on the Social Club, or if you would like to be emailed our newsletter detailing future events at the club, please email gosfieldsc@gmail.com



Gosfield Grapevine Community Group

GROUPS, SOCIETIES AND COMMITTEES:			
Toddler Group	Emma	07872-916917	
Gosfield Players	Alison Fisk		gosfieldplayers@gmail.com
Gosfield Rainbows	Stacey Creak	07814-233219	
Gosfield Brownies, Guides and Rangers	Gill Hillman-Crouch	01787-478097	Or: 07801-265603
Gosfield Beavers, Cubs and Scouts	Steve Sudbury	07885-467712	stephensudburygardens@gmail.com
Gosfield Girls Women's Institute	Joanne Hedley	07749-472832	
Gosfield Village Circle	Ann Willis	01787-274665	ann.willis2006@btinternet.com
Gosfield Community Shop	Brian Payne	01787-703787	thepaynes57@hotmail.com
Gosfield Horticultural Society	Rebecca Westover	01787-477331	
Gosfield in Bloom	Mandy Adams	01787-273494	mandyladams@icloud.com
Gosfield Fete Committee	Ian Scott	07798-753639	
Gosfield Playing Field & Pavilion	Ann Willis	01787-274665	ann.willis2006@btinternet.com
Rowson Perpetual Fund	David Jarvis	01787-474562	davjar33@gmail.com
ST. CATHERINE'S CHURCH:			
Priest -Reverend	Sue Goldsmith	01787-478471	halsteadrector@gmail.com
PCC Secretary	TBC		
Church Wardens	Jo Colyer	07894-577629	
	Judy Paterson	01787-472514	judith_paterson@hotmail.com
Wedding Co-ordinator	Rae Haylock	01787-472171	halsteadparish@gmail.com
Bell Ringing - Tower Captain	Laurence Carter	01787-472225	laurencejcarter@gmail.com

Please note: bell ringing practice on most Tuesday evenings, 7.45 pm to 9.00 pm, novices and experienced ringers welcome.

New ringers required urgently !

Gosfield Parish Council

Future scheduled meeting dates, subject to the Parish Council being quorate, however, check website for agenda to confirm dates, start time 7.15pm

The Parish Council meeting date for May has been changed it is now scheduled to take place on Monday 11th May, please check website and noticeboard for agenda.

22nd June 2026 (In the Pavilion)

20th July 2026 (In the Pavilion)

17th August 2026 (In the Pavilion)

21st September 2026 (In the Pavilion)

19th October 2026 (In the Pavilion)

16th November 2026 (In the Pavilion)

14th Dec 2026 (In the Pavilion)



Our current shopping list

2026

Food items

- UHT/Long Life Milk
- Teabags 40's/80's
- Sponge puddings
- Tinned/packet custard
- Sugar 500g
- Tinned tomatoes



Donate money

We are having to buy food to fill our food boxes. A monetary donation will help us to do this. Search for us on JustGiving





SLOW DOWN FOR GOSFIELD

Help keep our community safe, quiet, and friendly.

Do you worry about the speed of traffic through our village?

We are looking for local volunteers to join our **Community Speedwatch (CSW)** team. Speedwatch is a peer-led initiative designed to educate drivers, reduce road risk, and improve the quality of life for everyone living here.

Why we need YOU:

- **Protect our residents:** Help make the roads safer for children, elderly residents, and pets.
- **Support local riders:** Make our lanes safer for cyclists and horse riders.
- **Reduce Noise:** Slower traffic means a quieter, more peaceful village.
- **Gather Evidence:** Our data can help the Parish Council lobby for additional permanent traffic-calming measures.

How it works:

1. **Full Training:** You'll receive brief, professional training online from Essex Road Safety working on behalf of Essex Police
2. **Safety First:** We always work in teams of minimum of three at risk-assessed locations.
3. **No Confrontation:** We don't stop cars or engage with drivers. We simply record speeds and plate numbers.
4. **Education over Punishment:** Most speeding drivers receive an educational letter, not a fine, unless they are repeatedly speeding. It's about changing habits!

"I'm busy—how much time does it take?"

There is no minimum commitment. Can you spare **one hour a month**, your contribution makes a massive difference. Sessions are scheduled based on volunteer availability.

READY TO MAKE A DIFFERENCE?

Join our friendly team today and help us reclaim our roads.

Contact: SHAUN HARRIS

Phone: 07436467215

Email: sharris.sh01@gmail.com

"We aren't looking to catch people out; we're looking to bring the community together to make our home a safer place to live"

GOSFIELD VILLAGE ENTITIES

SCHOOLS:

Gosfield Primary School	Mrs. Bower (Head Teacher)	01787-472266	admin@gosfield-pri.essex.sch.uk
St. Margaret's School	Carolyn Moss (Headteacher)	01787-472134	admin@stmargaretsprep.com
Gosfield School	Rod Jackson (Principal)	01787-474040	enquires@gosfieldschool.org.uk

SPORTS CLUBS:

Gosfield Carpet Bowls Club	Paul M Nicklin	01787-478269	paul.nicklin39@gmail.com
Gosfield Lake Golf Club	Tony O'Shea	01787-474747	office@gosfieldlakegolf.club
Gosfield Juniors Football	Mark Wiskin	07930-990013	
Gosfield United Football Club	Simon Fraser (Chairman)	01206-211470	
Gosfield Tennis Club	Richard Waters	07900-236754	gosfield-tennis@hotmail.co.uk
Gosfield Lake	Linda Turp (Office Manager)	01787-4785043	turps@gosfieldlake.co.uk

PUB, CLUB and EVENTS HIRE:

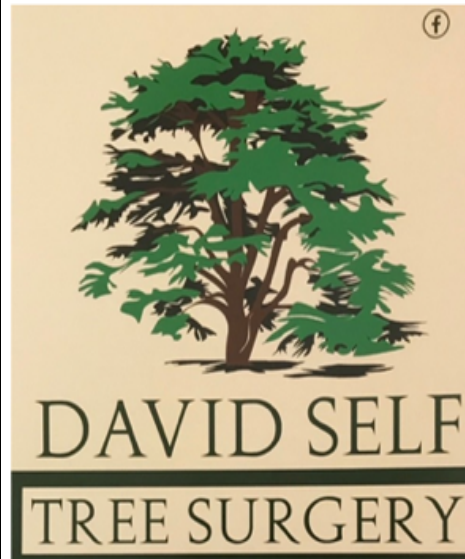
Maurice Rowson Hall	Amanda Degnan	07308-530638	rowsonhall@gmail.com
The Kings Head		01787-474016	
The Social Club	Becky	07960-014607	gosfieldsc@gmail.com
The Apple Tree	Maxine and Keith	01787-477715	enquiries@theappletreegosfield.co.uk
Courtyard Brewery	Tanya and Marc	07710-230662	

GOSFIELD SUPPORT:

Neighbourhood Watch Group	Louise Smith	07962-268376	
Community Agent			

GOSFIELD POLICE COMMUNITY SUPPORT OFFICERS (PCSO):

PCSO 70714	John Thorne	07812-068636	John.Thorne@essex.police.uk
PSCO TBC			



DAVID SELF
TREE SURGERY

FOR EVERY ASPECT
OF TREE SURGERY
& HEDGE CUTTING

ALSO SUPPLY LOGS + WOODCHIPS

£10 MILLION PUBLIC LIABILITY

CALL US FOR A FREE QUOTE

07717 844 885

01787 479 570



For more information,
please e-mail

gosfieldsc@gmail.com

**New members
welcome**

The Street, Gosfield

Fully licensed bar with
wide range of drinks

Large comfortable seating area

Two full-size snooker tables
and pool table

Open from 8pm Tuesday to Saturday

Membership £10 per year

(£5 for seniors and juniors)

Joint membership also available.

YOGA

EVERY MONDAY

At Halstead Community Shed
Fenn Road
Halstead
CO9 2HG
19:00 - 20:00
£8

EVERY TUESDAY

Maurice Rowson Hall
Church Road
Gosfield
CO9 1UB
19:15 - 20:15
£8



BOOK YOUR CLASS & LEARN MORE
ABOUT ME AT:

www.honourthroughmovement.com
07738969626

07738-969626

24



GOSFIELD SCHOOL
SUMMER FETE

FREE ENTRY

CUT HEDGE PARK CO9 1PF

SATURDAY, JUNE 20 12:00PM TILL 5:00PM

EVENT HIGHLIGHTS

LIVE MUSIC FROM ANDY & LOU - PERFORMANCES
FOOD STALLS - AMUSEMENTS - BOUNCY CASTLE - RAFFLE
DOG SHOW - ENTERTAINMENT - STALLS
AND MUCH MUCH MORE

GOSFIELD SCHOOL BEER FESTIVAL
STARTING SAT 20TH

FOR MORE INFORMATION CONTACT

SUMMERFETE @GOSFIELDSCHOOL.ORG.UK

21

DISCOVER



THE LAKES COURSE

THE LAKES 18 HOLE COURSE

Our Championship Lakes Course designed by 3 time Open winner Sir Henry Cotton, is sculptured into 160 acres of stunning and historic parkland and ancient woodlands.

Set in peaceful surroundings, the 6700 yard, par 72 course boasts gently undulating fairways, challenging water hazards and perfectly manicured greens.

It is truly a great test for all levels of golfer.



GOLFSHAKE.COM

50 Hidden Gem Golf Courses to Play in England
"Perhaps the perfect golf club.
Fourth time playing this Sir Henry Cotton designed course in glorious Essex countryside.
Lucky enough to enjoy it in fabulous early April sunshine."



WINTER WARMERS

Enjoy a Bacon, Sausage and Egg Bap or a Full English Breakfast and 18 Holes of Golf on the Lakes Course for a great price!

**Coffee/Tea
Breakfast Bap
&
18 Holes
Lakes Course
£32.00**

**Coffee/Tea
Full English
&
18 Holes
Lakes Course
£37.00**

MEMBERSHIP

New Members 2026

Get 15 months Membership for the price of 12...at 2025 prices!

We cater for the newcomer and seasoned golfer, offering a wide choice of opportunities for our members to join in and make the most of their Membership.

Call our Memberships team on 01787 474747

HIDDEN GEM



THE MEADOWS COURSE

THE MEADOWS NINE HOLE COURSE

The Meadows Course is an outstanding course for the new and aspiring golfer. Regarded by many seasoned golfers as a challenging par 4 course, it is a great place to start your golfing journey.

Particularly suitable for the younger golfer, we have coached groups of Juniors regularly honing their skills on shorter tees.

It truly is a "Hidden Gem"...and is the perfect introduction to Golf.



CLUBHOUSE

Happy NEW Year

Now taking bookings for your New Year event in January & February.

With space for lots of cars and over 100 guests we can accommodate every type of event...from family to work.

Call the Clubhouse on 01787 474400

For Membership and Societies, please call: 01787 474747

For Tee and Buggy bookings, speak with the Professional Shop: 01787 474488

For Events and Hospitality please call the Clubhouse: 01787 474400