



w: stmargaretsprep.com   

Preparing your child for a bright future

We are an independent co-educational school for ages 2 to 11, where happy children make excellent progress. Contact us to book your personal tour of our wonderful school.



St. Margaret's
Preparatory School

Rated 'EXCELLENT' in all areas by



ISI Independent
Schools
Inspectorate

☎ 01787 273 050

✉ admissions@stmargaretsprep.com

📍 Hall Drive, Gosfield, Halstead,
Essex CO9 1SE

ROUTE 2

OCTOBER 2025

7 14 21 28

NOVEMBER 2025

4 11 18 25

ROUTE 7

OCTOBER 2025

7 14 21 28

NOVEMBER 2025

4 11 18 25

Gosfield Grapevine



A view across the 1st fairway in Gosfield (photo by Tony Sale)

Issue 121 – October - November (2025)

Gosfield Parish Council



WINDOWS, DOORS & CONSERVATORIES



**INSURANCE BACKED
GUARANTEE**
10 YEAR WARRANTY
FENSA APPROVED

AFFORDABLE
FREE QUOTATION
ENERGY EFFICIENT

Visit our showroom to discuss our full range of products

01787 274475

sales@greenglaze.co.uk : www.greenglaze.co.uk

55 High Street, Halstead CO9 2JD



**COUNTRYSIDE
DRIVEWAYS**

Tobermore
REGISTERED PAVING CONTRACTOR



FREE SITE SURVEY



FREE ESTIMATES



01787 860045 07393 989560
www.countryside driveways.co.uk



NOTES FROM THE EDITOR

The deadline for things to go into the next Gosfield Grapevine magazine is:

Friday, 21st November

Anything sent in after this will be put forward into subsequent magazines. If you would like to advertise your community event, club, or business, and for anything Grapevine related, please contact the Gosfield Grapevine editor at:

grapevine@gosfieldparishcouncil.org

DATES TO NOTE:

Tuesday, 21st October – GHS AGM (Gosfield Social Club, 7 pm)

Saturday, 1st November – Halloween Party (Social Club)

Thursday, 6th November – Licensing of Reverend Sue Goldsmith

Saturday, 15th November – St. Catherine's Christmas Fayre

Thursday, 11th December – Village Circle Christmas Lunch

MR Hall 10 am to 2 pm

Chilly Dippers is on Fridays 12.30-1.30 and Sundays 8.30 and 9.00 – beginners will need an induction – booking in via FB @Gosfieldlakeopenswimming

COMMUNITY DEFIBRILLATOR

Location and Maurice Rowson Hall, Church Road,

Post Code: Gosfield, CO9 1TL

ACCESS CODE:

What3Words

location: "bedding-framework-elephant"

C159X

Please note that a 999 call must be made before attempting to access the defibrillator.



GOSFIELD COMMUNITY SHOP:

We always welcome new volunteers so, if you would like to join an award-winning team, leave your details in the shop and our Volunteer Coordinator, Jo, will contact you to arrange training etc.



GOSFIELD COMMUNITY SHOP:

Opening Times:

Monday to Saturday: 8 am to 4:30 pm

Sunday: 8 am to noon

CHAIRMAN'S NOTES:

I am pleased to report that work has commenced on the new skate ramp on the playing field. This is mainly being paid for by Section 106 moneys from the developer of The Lindens as well as a grant from Sport England.

Further to reports about parking in the village, I have been asked to remind residents that the junction of The Lindens should be kept clear at all times.

I have also been notified that some dog walkers are not clearing up after their dogs on the large grassed area in Edmund Green. Please keep this area free from dog mess as children do play there.

I must thank our County Councillor (Chris Siddall) for chasing up the repair of the potholes outside the playing field and also the war memorial. These have now both been completed well in time for Remembrance Sunday. I must also thank our District Council (Peter Schwier) for his continued support.

Could landowners and residents with hedges abutting the pavements please ensure that hedges, etc, do not encroach onto the pavements/roads (please see the article elsewhere in the Grapevine).

I must advise you that John Willis has decided to step down as a Parish Councillor due to other commitments. I would like to thank John for his hard work on behalf of the Parish Council and I am pleased that he will continue to be involved in the Neighbourhood Plan. We are therefore now short of two Parish Councillors. Please do come along to our Parish Council meetings to see if you may be interested in serving the community. They are held on the third Monday of each month in the pavilion, Church Road at 7.15pm.

Tricia Edwards.

Ongoing planning applications are given on page 20.

The shared ownership property in Edmund Green is still available. You should contact "Leaders" in Halstead on 01787-479947 if you are interested in this property.

Note from the fairy trail

I would like to thank all visitors to the Fairy Trail, the fairy's loved to see so many happy faces. Thanks for your letters and notes and have been busy helping with your requests, it made them feel so at home.

The Fairy Trail will be closing at the end of October for the winter and will be returning in the spring with a whole new adventure.

The Fairy Post Box will still be in place if you wish to continue writing to the Fairy's or have any questions or requests.

Queen of the fairy's

GOSFIELD PARISH COUNCIL:

ROLE:	NAME:	CONTACT INFORMATION:
Parish Clerk	Diane Jacob	5 Crocklands, Greenstead Green, CO9 1QY parishclerk@gosfieldparishcouncil.org 07907-631172
Chairman	Tricia Edwards	Home Farm House, CO9 1RZ tricia.edwards@gosfieldparishcouncil.org 01787-472958
Vice Chairman	Bob Waters	21 Meadway, CO9 1TG bob.waters@gosfieldparishcouncil.org 01787-473863
Councillor	Maggi Pawsey	Tye Beams, The Street, CO9 1TP Via the Parish Clerk 01787-472967
Councillor	Carol Betty Hough	13 Braintree Road, CO9 1PR Via the Parish Clerk 01787-477208
Councillor	Joanne Lisa Colyer	13 Nuns Meadow, Gosfield, CO9 1UB joanne.colyer@gosfieldparishcouncil.org 07894-577629
Councillor	Tony Strudwick	17 Park Cottages, Gosfield, CO9 1TP tony.strudwick@gosfieldparishcouncil.org 01787-473444
Councillor	Richard Edwards	Home Farm House, CO9 1RZ richard.edwards@gosfieldparishcouncil.org 01787-472958
Councillor	* 2	Volunteers needed !

For anything Parish Council related, please contact the Parish Clerk, as above.

Bin Collections:

Green circle – green bin [if paid], clear sacks and food bin
Grey square – grey bin and food bin

PARISH PONDERINGS - FROM ST. CATHERINE'S CHURCH

Apparently, the metaphor “Every cloud has a silver lining” originates from John Milton’s poem “Comus: A Mask Presented at Ludlow Castle”, written back in 1634. In this poem Milton uses the imagery of a cloud with a silver lining to convey the idea of hope and light amidst darkness. This metaphor has since become a common idiom representing optimism in difficult situations.

One thing that is true for all of us is that there will be it’s up and downs in our lives. We will all face disappointments and problems at times. I wonder how many youngsters this year were disappointed with their exam results, for example. How many of them will be returning to re-sit exams? Rather than a resit, some of them may have chosen to have a rethink, and may have decided to take a different path in their education. I think facing up to, and dealing with disappointment can be character-building, can make us more resilient and better able to face life’s challenges. There may even be times when we look back on our lives and realise that, what we initially saw as a disappointment, turned out, indeed, to have a “silver lining”, turned out to be an opportunity that took our life in a different, more positive and fulfilling direction.

The Three Saints Parishes have been without a Team Vicar for 15 months and the churches were looking forward to the licensing of our new Team Vicar at the beginning of October. You can imagine how we felt when we received this message from Archdeacon Kate Peacock – “We are deeply disappointed that we have to postpone the licensing for the Revd. Sue Goldsmith as the new Team Vicar here. This is due to the DBS system suddenly taking much longer than expected – a situation that has been escalated to the highest level. We are now working towards the new date of 6th November”. Yes, disappointing, but “the silver lining for us has been that the three parishes have been drawn closer together through this whole process, as each church family looks out for and supports the others.

Lamentations 3:22-23 says “Because of the Lord’s great love we are not consumed, for his compassions never fail. They are new every morning: great is His faithfulness.” It may not have been an easy path to travel, but we know we will get there in the end, and be able to welcome Rev’d Sue as Team Vicar to the Three Saints Parishes, when the time is right.

May God bless you richly, Judy.

Gosfield (Mobile) Library Route 2 - Nuns Meadow, Monday,	Library - Halstead - Braintree (Not open public holidays)		
9:45 am to 10:15 am: 18 th August 8 th September 29 th September 20 th October 10 th November 1 st December	Monday Tuesday Wednesday Thursday Friday Saturday Sunday	9am to 5pm 9am to 6pm Closed 9am to 6pm 9am to 5pm 9am to 5pm Closed	9am to 7pm 9am to 5:30pm 9am to 5:30pm 9am to 5:30pm 9am to 5:30pm 9am to 5pm Closed

ST. CATHERINE'S CHURCH, GOSFIELD:

We are part of The Three Saints group of parishes along with St Andrew's Church, Halstead, and St James' Church, Greenstead Green; and belong to the wider Halstead Area Team Ministry. Everyone is welcome at your local parish church. Services for the next two months at St. Catherine's and other churches are as follows:

Day--Date	→	→	→	Time	→	→	Service	→	→	Location
Sunday-5 th .October	→	→	→	10am	→	→	Team-Service	→	→	St-James',Greenstead-Green
Sunday-12 th .October	→	→	→	10.30	→	→	Morning-Worship	→	→	St-Catherine's,-Gosfield
Sunday-19 th .October	→	→	→	10.30	→	→	Holy-Communion	→	→	St-Catherine',-Gosfield
Sunday-26 th .October	→	→	→	10.30	→	→	Morning-Worship	→	→	St-Catherine's,-Gosfield
Sunday-2 nd .November	→	→	→	10.30	→	→	Holy-Communion	→	→	St-Catherine's,-Gosfield
¶										
Thursday-6 th .November	→	→	→	7.30pm	→	→	Licensing-of-Rev'd-Sue-Goldsmith	→	→	St-Andrew's, Halstead
¶										
Sunday-9 th .November	→	→	→	10.20	→	→	Remembrance-Service	→	→	MR-Hall
Sunday-16 th .November	→	→	→	10.30	→	→	Holy-Communion	→	→	St-Catherine's,-Gosfield
Sunday-23 rd .November	→	→	→	10.30	→	→	Morning-Worship	→	→	St-Catherine's,-Gosfield
Sunday-30 th .November	→	→	→		→	→	Team-Service,-venue-and-time-TBA	→	→	

Refreshments – usually including home-made cakes and savouries – are served after Sunday services at St Catherine's.

For those who prefer to access an online service, each Sunday at 10am Three Colnes Churches live stream via Facebook (The Three Colnes), or You Tube (HalsteadAreaTeam@halsteadareateam3650). There is also the Daily Hope phone line, which offers familiar hymns and prayers free of charge if you dial 0888-804-8044.

For more information on services and activities in the Three Parishes, please contact the parish office on 01787 478471.

ST. CATHERINE'S CHURCH 50/50 CLUB

August Winners:	No. 7 Mrs. D Holt	No. 60 Mr. R Sycamore
	No. 27 Mrs. V Beaumont	No. 93 Mr. L Carter
September Winners:	No. 6 Mrs. L Kemp	No. 45 Miss D Richardson
	No. 37 Mrs. T Edwards	No. 47 Mrs. V Perry

Anyone wishing to join, please contact **Hazel** on 01787-472593

MATTHEW D JARVIS

GENERAL BUILDER PROPERTY MAINTENANCE

ESTABLISHED 1992

Extensions • Block Paving • Brickwork • Groundwork
Carpentry • and all your building needs

All Work Guaranteed

Tel: 01787 475561 Mob: 07798 846051
4 Highlands, Gosfield, Halstead, Essex CO9 1PH.

Gosfield Rainbows



Places available for Girls aged 5-7

Meet on a Monday 4.30pm-5.30pm

Term time only

Rainbows is exciting, messy, friendly and
lots of fun!

Come join us!

Call Stacey, Rainbow Leader

On

07814 233219

Or look online www.girlguiding.org.uk to
register your daughter TODAY!

Gosfield Brownies



Places available for Girls aged 7-10

Meet on a Monday 6.00pm-7.30pm

Term time only

Introduce your daughter to a world of
new adventures,

challenges and fun!

Call Gill, Brown Owl

On

07801 265603

Or look online www.girlguiding.org.uk
to register your daughter TODAY!

PARISH COUNCIL WORKING GROUPS:

Group / Committee:	Councillors:
Nature Reserve	Strudwick, R. Edwards
Playing Field Management Committee	T. Edwards, Hough, Pawsey
Allotment Officer	Strudwick, R. Edwards
Footpaths	Colyer
Finance	R. Edwards - plus all other councillors
Appeals	Colyer
Children's Play Area	Hough, Strudwick
Planning	Waters, Pawsey
Grapevine Editor	Alan Summerland
Tree Warden	T. Edwards
Maurice Rowson Village Hall	Strudwick - to attend M R Hall meetings
Car Park drainage/surfacing	TBA
Wethersfield Scrutiny Committee	Strudwick - to attend WSC meetings
Information, minutes and agendas:	www.e-voice.org.uk/gosfield

MEMBERS OF OUTSIDE BODIES:

Braintree Association of Local Councils [BALC]	Tricia Edwards
Coffee Rooms Trust	Waters
Rowson Perpetual Memorial Fund	Pawsey, Hough, Colyer
Member of Parliament: Mr James Cleverly MP - or: Braintree Conservatives Association Office:	House of Commons, London, SW1A 0AA james.cleverly.mp@parliament.uk Suite 11, The Centre, Lakes Industrial Park, Braintree, CM7 3RU
Essex County Councillor: Cllr. Chris Siddall	Essex County Council, PO Box 11, CM1 1LX cllr.chris.siddall@essex.gov.uk Office: 01376-562288
Braintree District Councillor: Cllr. Peter Schwier Gosfield & Greenstead Green Ward	Long Fen, Great Maplestead, CO9 2RJ cllr.pschwier@braintree.gov.uk 01787-460473

MAURICE ROWSON HALL – SCHEDULE OF ACTIVITIES

Church Road, Gosfield, CO9 1TL

WHAT'S ON AT THE HALL IN OCTOBER AND NOVEMBER ?

Regular bookings¶

Mondays: Aerobics-9:15am-to-10:15am, Pilates-11:00am-to-12:00pm, Rainbows-4:30pm-to-5:00pm, Brownies-6:00pm-to-7:30pm, Bowls-8:00pm-to-10pm.¶

Tuesdays: Yoga-9:45am-to-11:30am, Hummingbird-Hub-12pm-to-5pm, Karate-6:00pm-to-7:00pm.
Yoga-7:00pm-to-8:30pm.¶

Wednesdays: Bowls-7:00pm-to-9:00pm.¶

Fridays: Pilates-10:45am-to-11:45am...Guides-and-Rangers-7:00pm-to-8:30pm¶

Sundays: Players-4:00pm-to-6:00pm¶

Once-a-month-bookings¶

Mondays: Cuppa-Club-2:00pm-to-3pm-(1st-Monday-of-the-month)¶

Thursdays: Village-Circle-2:00pm-to-4pm-(3rd.Thursday-of-the-month)¶

.....Gosfield-Girls-WI-7:30pm-to-9:00pm-(3rd.Thursday-of-the-month)¶

Contact details for Rainbows, Brownies, Guides, Rangers, Bowls, Village Circle, Gosfield Girls WI and Gosfield Players can be found elsewhere in this Grapevine magazine.

One-off-bookings-for-October-and-November¶

Saturday-1st.November. Gosfield-in-Bloom-Quiz-night-7pm-for-7:30pm-start. Tickets-£5-per-person.
Contact-Sally-on-07586-309330-to-book-a-table.¶

Sunday-9th.November. Remembrance-Sunday-Service-commencing-at-10:20am¶

Saturday-15th.November. Church-Christmas-Fair-10am-to-2pm¶

Saturday-22nd.November. Hummingbird-Hub-Christmas-Fete¶

Saturday-29th.November. Jumble-Sale/Car-Boot-Sale-(tbc)¶

For further information on the Rowson Hall, please contact the Booking Clerk, Amanda Degnan, on 07308-530638, or by emailing: rowsonhall@gmail.com

Free Wi-Fi available at the Maurice Rowson Hall courtesy of Gigaclear

Stephen Hall
Your Local
OvenGleamer

Get that cooker **GLEAMING** before you cook

Need your Dirty Oven, AGA Or Range Gleaming Again?

A Professional Deep Cleaning Service Which Will Have Your Cooker Looking 'Like New'
We Don't Just Clean Ovens...We GLEAM Them!

Covid-19 Safe Cleaning : Includes post-clean sanitisation

Community Magazine Offer*
£5.00 Off Your Next Clean
*With all ovens cleaned before 1st October '21

"Oven cleaned by Stephen to the standard I bought it at. Highly recommend his services. Would use him again." **Stella Shaddock**

Call and Book Today On 01787 852112

Check out our 3100+ reviews at www.ovengleamers.com
Ovens | Ranges | AGAs | Hobs | Extractors | Microwaves | BBQs

Gosfield Grapevine



Community Group

ST CATHERINE'S CHURCH

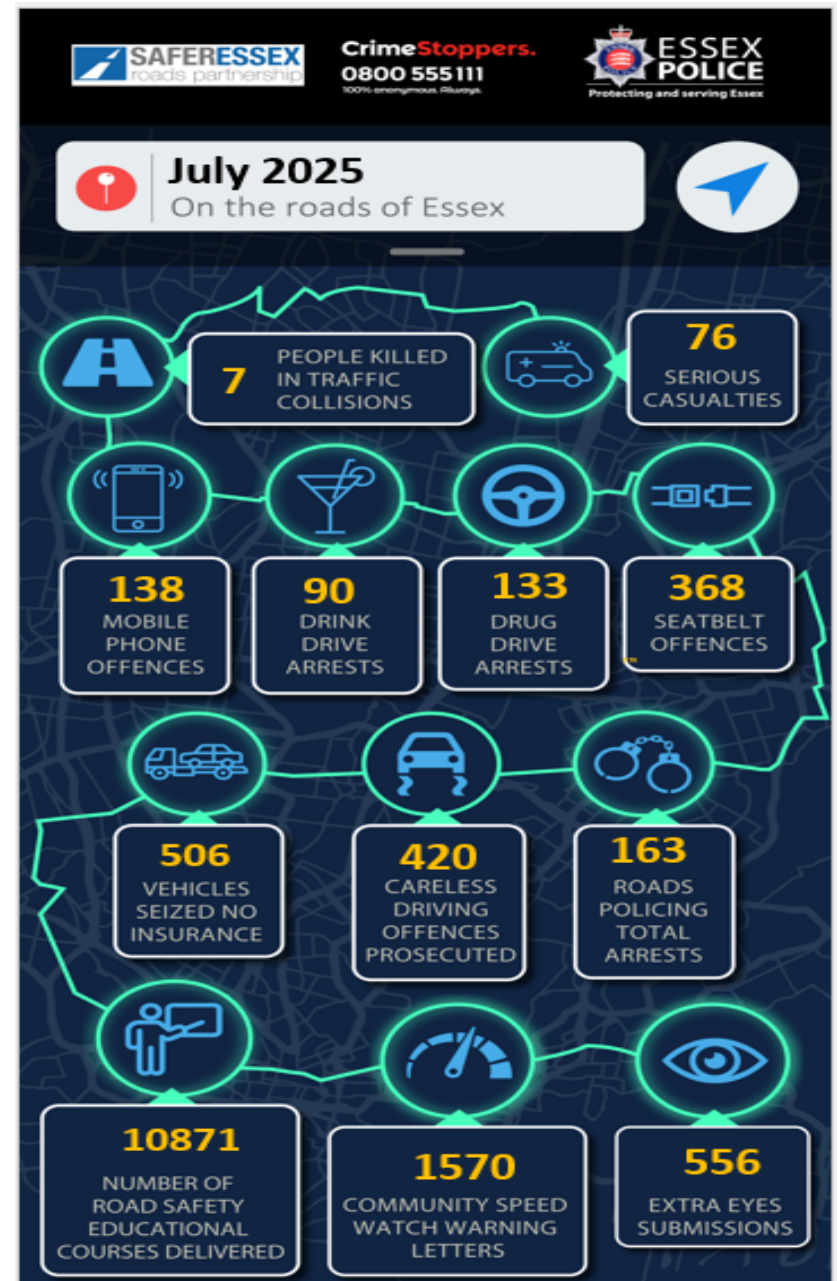
CHRISTMAS FAYRE

SATURDAY 15TH NOVEMBER
10AM TO 2PM

Maurice Rowson Hall, Church
Road, Gosfield

Stalls, Christmas Gifts, Cakes,
Raffle, Novelties, Crafts

FREE ADMISSION
COME AND JOIN US



The Hawthorns

BRAINTREE



RETIREMENT LIVING, THE COMFORT OF HOME

The Hawthorns' all-inclusive rental model encompasses all the features you would expect of a luxury retirement community with certainty, easy planning, and flexibility. Enjoy a worry-free and active retirement at the Hawthorns.

Scan the QR code to see our upcoming events
01376 778214 | hawthornsretirement.co.uk

Meadow Park | Tortoiseshell Way | Braintree | Essex | CM7 1TD



Anglian Plumbing



PLUMBING HEATING ELECTRICAL ENGINEERS

All GAS OIL LPG & ELECTRIC – Heating Fixed Repaired or Replaced

New boilers with 10 year warranty • Landlord gas certificates
New bathrooms & kitchens designed & installed • Fault finding - no problem
Radiator Power flushing • New taps • Sinks • Baths • Leaks fixed fast!
All work fully guaranteed and insured

Tel: 01787 278511 | 07825 348 536

www.anglianphe.co.uk



**10% DISCOUNT
FOR OAPs**

**£10 discount
if we are late for an appointment**

Anglian Electrics



For all your Electrical Needs

- Fault Finding • Diagnosis
- Garden lights, sockets, garage, sheds, garden rooms & offices
- Faulty or New socket • Full rewire • New Fuseboxes
- EV charging point installation

Tel: 01787 278511 | 07825 348 536

www.anglianphe.co.uk • Local Family Business



**10% DISCOUNT
FOR OAPs**

**£10 discount
if we are late for an appointment**

Halstead, Braintree & Haverhill Physiotherapy & Sports Injury Clinics

Reduce pain & promote healing

Specialising in the treatment & rehabilitation of spine & joint problems, muscular issues, headaches, dizziness, back & neck pain.

Musculoskeletal, Vestibular & Neurological Rehabilitation from our team of expert practitioners.

Evening & Saturday appointments are available at all three clinics.

www.halsteadphysiotherapyclinic.co.uk

2 Market Hill, Halstead CO9 2AR

01787 478789



KÔR PILATES MAT AND REFORMER STUDIO

Small group classes for all abilities
Book online & view full timetable at

korpilates.co.uk

Reformer £15 per class

Mat £8 per class

Discounts on block purchases

For 1-2-1 and private sessions email
hello@korpilates.co.uk

@korpilatesuk

Breen's Gym, Sible Hedingham, CO9 4HZ

**A friendly and professional
expert company in pest
prevention and control.**

**Dealing with any issue you have
with rodents, insect pest and
flying killers.**

Contact now on 07368-439619.

E-mail:

ptbpestcontrol@gmail.com.



PTB PEST CONTROL

Gosfield Lawn Tennis Club

New members are welcome of all ages and standards.

Professional coaching sessions available.

Adult membership starts at £54 for the first year.

For more information, contact our Secretary, and look at our website:

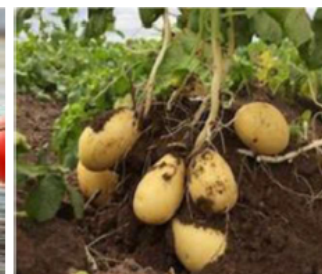
www.gosfield-tennis.co.uk

Interested in Taking on an Allotment ?

The allotments are located in the village opposite Greenfields in The Street, Gosfield.

Once a plot is allocated the tenant must sign and return one copy of the agreement before any activity commences on the said plot. Rents are payable in arrears.

Plots will be inspected at frequent intervals to see that plot conditions are being complied with in accordance with the agreement, by our allotment Officer Councillor. If you would like to rent an allotment plot, please contact the Parish Clerk for further details. Tel: 0790-7631172 (parishclerk@gosfieldparishcouncil.org).



**Village Post Office
– Community Shop**

**Open on Wednesdays
from 2 pm to 4 pm**

GOSFIELD YARNIES:

A Knitting and Crochet group.

Wednesday – 10am - midday

£3 per person – which includes
tea/coffee and homemade cakes.



Period Property Services

We are a family-run business covering the Essex and Suffolk area.

Passionate about our work, paying attention to every detail.

- Lime pointing and plastering
- All aspects of roofing
- Damp proofing and drainage
- Extensions and alterations
- Decorating and repairs
- Landscaping and paving

CALL US TODAY !!!



079 89 56 8144



tudorpss1@gmail.com

Christopher
THE LOCKSMITH

ARE YOUR LOCKS BEHAVING BADLY?

We Value Old Fashioned Customer Service
A Local Trusted Family Business Since 1989

 Specialist in UPVC & Wooden Doors

 No Call Out Charge

 No Fix No Fee

 All Work Fully Guaranteed

 10% Senior Citizen Discount



For More Advice & Help Call Christopher:

07772 111 222

www.christopherthelocksmith.co.uk



When your house needs a clean

Do not shout, do not scream !

Just call for Daisy

and she'll make it gleam !

Phone Daisy on 07919-993363



MIKE'S GUTTERS

**BEFORE & AFTER PHOTOS AFTER JOB COMPLETION
FULLY INSURED AND LADDER ACCREDITED**

- Clear Gutters of Debris, Moss, Plants & Dirt
- Wash Gutters, Fascia & Soffits
- Conservatory Roof Cleans
- Greenhouse Cleans
- Minor Repairs



PHONE/TEXT - 07563112589 WEBSITE- Mikesgutters.co.uk
EMAIL- Info@mikesgutters.co.uk (OPEN 7 DAYS A WEEK)



EDENPRINT



*Leave a
Lasting
Impression*

- Leaflets • Posters • Booklets
- Signs • Banners • Notepads
- Custom Shape Labels
- Business Card • Letterheads
- Mugs • Greetings Cards
- Raffle Tickets • NCR Pads • Plans



sales@eden-print.co.uk • www.eden-print.co.uk

Unit 7 Rippers Court, Sible Hedingham, Essex - 01787 469628

We are always interested in employing local people, please contact us at HR@transporter-eng.co.uk for our current vacancies, or drop a CV into us at our main office.



**Bell Tack Works, Middleton Road
Sudbury CO10 7LJ**

01787 375 194

07483 145 555

info@rnrgardenmachinery.co.uk

- Sales, services and repairs for all garden machinery
- Sharpening service for: chainsaws, lawnmower blades, shears
- We stock coal, logs and kindling

AUTHORISED DEALER FOR:



Mr Odd Job & Son

General Home & Garden Maintenance

Paul Scott

M: 07712 314 434

I'm Here For The Jobs In Life That Just Don't Get Done!

KJL Home Improvements

07557 586602 / 01787 272 543
kevin.lucas@talktalk.net

- ✓ Kitchens
- ✓ Bathrooms
- ✓ General Building
- ✓ Renovations and Repairs



Home Excellence

KJL Home Improvements, a family-run company in Halstead, Essex, with 20+ years of experience, specialising in home renovations, conversions, and extensions.

Get your **FREE NO - OBLIGATION** quotation today!

For more information, visit:
kjllhomeimprovements.com




C Jarvis Contracting


Hedge Cutting (seasonal)
Topping
Grass Harrowing
Hay Making
Pasture Aerating

Email: c.jarviscontracting@gmail.com
Phone: 07485 204069


Other Services are available



 **Dog Walking - Solo & Group Walks**

 **Petcare Visits - Puppy, Cat & Small Animal Care**

 **Friendly, Reliable & Fully Insured**

 **Call Rebecca - 07960 485983**
Email - bex@k9walksandall.co.uk

LW LANDSCAPES

- *Garden Maintenance
- *Hedge Cutting
- *Drainage
- *Patios
- *Decking
- *Fencing
- *Sleeper/Timber Work
- *Turfing
- *Jet Washing

07467439993
Lukewheeler75@gmail.com



07467439993

HARPER ROSE FLOWERS

WEDDING, FUNERAL & EVENTS FLORIST

We are here for all your floristry needs and we can deliver same day / next working day!

Call - 07399231069
or visit www.Harperroseflowers.co.uk

Find us inside COXS@spencers Farm Shop,
wickham St Paul, Halstead CO9 2PX

(We also provide monthly workshops for more information call 07399231069)



GOSFIELD HORTICULTURAL SOCIETY

Annual General Meeting Tuesday 21st October 7.00p.m. Gosfield Social Club

Our Autumn show on Saturday 20th September was very successful in spite of the hot, dry summer weather, with entries almost equalling last year's Autumn show. The fact that it has been an excellent year for fruit growing was reflected in the unusually high number of entries in the home-made preserve classes, but the vegetable classes were also well supported. Afternoon tea and cakes were enjoyed by the many visitors.

Thanks to the show committee, entrants and visitors, for making the day a success.

Our Annual General Meeting is on the 21st October, 7.00 p.m. in the Social Club. If you have any ideas for improvements to the show or other gardening-related activities, please come along to the meeting.

GOSFIELD PITS NATURE RESERVE

The nature reserve has continued to provide an informal recreation opportunity for dog walkers and families throughout the summer, as well as an occasional motorhome stopover and wildlife haven. The most notable species recorded has been the kingfisher seen on the larger ponds. Work is under way to restore the Horseshoe Pond by removing fallen willow. This will continue during the winter with the coppicing of multi-stemmed willow on the banks, and the replacement of the handrail next to the path. A new 5-year management plan will soon be published on the Parish Council web-site. If you have any thoughts on the management of the reserve, please contact the warden.

1st Gosfield
Beavers, Cubs
& Scout Group



Contact Steve Sudbury
on 07885-467712, or:
stephensudburygardens
@gmail.com

1st Gosfield Scout Group
www.1stgosfieldscouts.co.uk

We meet at Gosfield School in Halstead Road on Wednesdays Beavers (aged 6 to 8) 5.30 to 6.30, and Cubs (aged 8 to 10) 6.30 to 7.30

Scouting is open to both boys and girls, all are welcome.

We are in need of more leaders, in particular we would like to start up the Scout section again, aged 10 to 14 – anyone up for the challenge ?

Steve Sudbury Group Scout Leader.

Gosfield Guides



Places available for Girls aged 10-14

Meet on a Friday 7.00pm-8.30pm

Term time only

Fun filled evenings with friends

Learn new skills whilst

Challenging yourself!

Call Gill, Guide Leader

On

07801265603

Or look online www.girlguiding.org.uk
to register your daughter TODAY!

Gosfield Rangers



Places available for Girls aged 14-18

Meet on a Friday 7.00pm-8.30pm

Term time only

One big adventure after another,

Space to develop and grow whilst

Having fun!

Call Gill, Ranger Leader

On

07801265603

Or look online www.girlguiding.org.uk
to register your daughter TODAY!

VILLAGE CIRCLE CLUB

Chris Parfitt came to Village Circle for our August meeting and gave an excellent talk, with pictures, on his visit to Svalbard. We learned about the history, flora and fauna of the island ending with some great pictures of polar bears.

For our September meeting we welcomed Amanda Sutherland who gave us a brilliant afternoon on 'make do and mend' A lesson on how to transform old items from our wardrobes into entirely new pieces. Great British Seeing Bee transformation section could learn a great deal from Amanda and her innovative ideas and we can view our various outfits with totally different eyes now!

Our next meeting on 16th October sees a welcome return of retired prison governor Lindsay Whitehouse with more tales of his experiences during his career, and on November 20th, a speaker from Braintree Museum will present Leading Ladies. Finally, 2025 comes to a close with our Christmas Lunch at the Golf Club on 11th December.

If you'd like to know more about us, please call Ann on 07773-140216.

We meet at The Rowson Hall, Church Road, Gosfield on the 3rd Thursday of each month from 2 - 4pm, visitors fees are £3 per meeting which includes refreshments.

MEMORIES and such like from LINDA. (Marlow, Richardson) KEMP:

There's a chill in the air as I sit typing this today and it is officially Autumn the Weather man tells me. Time for sorting out my knitting and some of the heavier tomes from the bookcase to be read.

No longer thoughts of me picking up Chestnuts on the right-hand side (Spinney fence area) of the Playing field in the village. Those more agile should watch for when the fine protective casings are falling from the trees ready to be carefully prised open, they start to open readily when ripe enough just a bit spiky. This is old news to villagers with decades behind them in Gosfield, but, of course, there are many new residents now. Fresh chestnuts are superb.

A couple of months ago Gosfield resident BILL PASFIELD celebrated his 95th Birthday. Congratulations Bill. Who I am told still takes the minutes in longhand at the Maurice Rowson Trust Meetings. Good for you Bill. Hand writing is becoming a lost art. I miss lots of old friends that I used to write letters to. I have just a few now that I still write annual updates to within a Christmas card. Mind you with the cost of stamps now and lack of post offices in towns etc, it isn't the same anymore. I was reading a some notes I have of old Halstead town reports and one stated that the ONCE DAILY POST DELIVERY WOULD BE TWICE DAILY. It was dated MARCH 1862.

Bill and his late wife ALMA were very involved in village life. When I was still at the Primary school Alma was a stand in teacher for a time. Her parents the Braziers lived and ran the shop/Post Office in the Street. It was still 'sweet rationing' but as we walked home from school on a Friday there was always a little something to buy. 4 orchard chews for 1d.. (A big old copper penny). There were liquorice twists or Sherbert dabs. The American soldiers had all the Wrigleys chewing Gum. By the time I was in my early teens the officers and families who lived in the village were my pocket money source. I baby sat their children. I was so lucky to get gifts given me from their commissary at the Air base. Hershey bars, Chewing Gum, and A Hair lacquer!! things that were not available locally. Actually, the hair products were totally new to a country village girl. Bee Hive hair do's were literally the height of fashion and that Lacquer did the fixing just right. Better than sugar water....Yes I do have a photoYes I had a black stretchy belt with a dirndl skirt with coloured net petticoats under and yes we did jive and twirl and twist 'again'. Our village place for that was the big ski hut down at the Lake. Approximately where the site of a restaurant is now.

The village hall was for socials, etc. Whist drives and dances where we did The Gay Gordons and such like. If you could breathe with the old coke stove pumping out fumes. We played Badminton in that same atmosphere. I have a memory of the smell now ...if that makes sense to you. It was similar to being in London in the late 50's early 60's visiting with my Gt. Aunt emerging from a shop or Theatre to a blanket of yellow air or rather no air just SMOG. Always a scarf around ones neck when out n about just in case to cover your mouth and nose but you still couldn't see much at all. So much better since those coal restrictions.

Peter Lee was our 1960's Gosfield Utd Goalie he lived up Halstead road. My brother asked if Peter Lee was still with us, does anyone know ?



Formed in 1975, the Charity is an Educational Trust that administers funds from investments, in the form of grants to local young people.

Educational Grants Available

The Earls Colne and Halstead Educational Charity offers grants to individuals, schools and voluntary groups and is keen to encourage applications to provide support for suitable projects that would benefit local young people

Projects previously funded include: the purchase of equipment such as mini tennis nets, specialist equipment for those competing in sports or arts, first aid training, expeditions and guide/scout events

To qualify, applicants must:

- be aged between 5 and 25*
- have lived or attended school for at least one year within the Charity's area of benefit (catchment area) *

* Voluntary groups must cater for young people in this age range and be located within our catchment area



Find out more:

More information about the Charity and application forms can be found on our website – www.echec.org.uk
Alternatively, email - earlscolnehalstead.edcharty@yahoo.co.uk



Formed in 1975, the Charity is an Educational Trust that administers funds from investments, in the form of grants to local young people.

Are you studying for a degree or about to start a degree course?

The Earls Colne and Halstead Educational Charity offers Resource Grants to young people studying undergraduate and postgraduate degree courses (excluding one or two year Foundation courses and including recognised level 4 courses).

To qualify, applicants must:

- be aged between 18 and 25
- have attended school or have lived, for at least one year, within the Charity's area of benefit (catchment area).

Note: Grants are not means-tested and anyone can apply as long as you meet the above criteria.



Find out more:

More information about the Charity and application forms can be found on our website – www.echec.org.uk
Alternatively email - earlscolnehalstead.edcharty@yahoo.co.uk

Community Agents Part of the Essex Wellbeing Service

Community Agents provide support to individuals in order to maintain independence living in their own home. We can help anybody over the age of 18 that is in particular need of a home visit in order to source the support needed.

Community Agents can assist with:

Equipment
Blue Badges & Bus Passes
Benefits
Social Opportunities
Transport
Meals & Shopping
Carers Support

To refer yourself, family member, friend or neighbour to Community Agents.

Please call EWS direct 0300 303 9988

Please note you must have the person you are referring's permission. Lines open Monday to Friday 8am-7pm and Saturday 9am-12pm.



Essex
Wellbeing Service



Gosfield Parish Council
Parish Clerk: Mrs D. Jacob
5 Crocklands
Greenstead Green
Halstead
Essex
CO9 1QY
Tel: 07907631172
parishclerk@gosfieldparishcouncil.org

www.e-vote.org.uk/gosfield

Co-option for two vacancies on

Gosfield Parish Council

The Parish Council would like to invite applications from members of the public to fill two vacancies within the Council. We are a vibrant and democratic Council, if you would like to be involved and contribute to your parish, please contact in the first instance for an application form to the following: -

Mrs Diane Jacob, Gosfield Parish Clerk, 5 Crocklands,
Greenstead Green, Halstead, Essex, CO9 1QY
e-mail parishclerk@gosfieldparishcouncil.org

Telephone 07907631172

Co-option policy available on the Parish Council website www.e-vote.org.uk/gosfield

MEMORIES, continued:

Roger Smith was a pupil in the photo we printed in the last issue and he contacted the editor so I am soon speaking with him about those missing names. He was in my class at school and a lecturer at Braintree College. He once built his own car and for 10 yrs was warden of the Conservation area in the village. So, I am hopeful of getting the answers.

Gosfield village life was Seasonal and now it would be football and Badminton season.

Bill Pasfield and his wife Alma bought a plot of land by Gosfield Corner opposite where Ropers Row very old cottages stood. I'll dig out a picture of them one day. An old thatched cottage had been demolished and so Bill and Alma had their home built. Where I assume Bill still resides. Talking to my mother one day Bill mentioned to her (as she had been a child in the long-demolished Ropers Row houses) that he kept digging up BONES as he started to cultivate his garden. Ha ha she said 'that cottage they pulled down was rented by a Halstead butcher and that's where he plied his trade'. Mum also said there was a butcher operating next door to the Kings Head and ironically in the late 1960's the property where Bill's wife grew up in the Street, opposite the 'Green' was turned into a Butchers shop. Next door became a Coffee Bar and a Bakers run by the Burtonshaw family and then Maggi Pawsey's Hair Salon (Selina Louise) and then Sally Stapleton took over and Maggi once again, finally re-locating to her corner shop Salon. The other premises were incorporated into the Green Man as a dining area. You all probably know more than I do what it is used for now. The corner shop was once a sweet shop belonging to Mrs Coppock nee PYE. Then a Shoe repair shop of Mr Normans, the retired village policeman. Antiques took over next (Mrs. Gardiner). It was filmed by TV 's ' LOVE JOY series with Ian McShane. He's been in huge film productions since those days.

Talking of PYE. On September 11th I attended during a Tube strike a Funeral service in St Albans the Martyr Church in Holborn, London of a former Gosfield Chorister and family friend singing years ago alongside his Grandpa PYE as my younger sister Lesley recalls as she was in the choir with them. NEIL WILSON 1956-2025 once an Altar Boy at St Catherines and a Gosfield son, born to Jean nee Pye and Stuart Wilson of The Limes. Neil attended Gosfield Primary School / Braintree Grammar School and then University near Durham where he became involved with the Cathedral there. His career as a Geography teacher provided him with an opportunity to take school students on 'out visits' which always took in Hedingham Castle and of course then Gosfield and a comfort stop for pupils at his Mums. He played the organ at family funerals with his cousin accompanying on violin (she was a London Orchestra lead violinist). Neil was at the time of his death a much-respected hard working Councillor for the London borough of Newham where flags were lowered as the news reached the Town Halls including Stratford of his sudden death. Neil was away on his summer break in Scotland when he died. His two older surviving brothers are Ian and Colin.



Creative Curtains and Blinds Carol Partridge

Made to measure Curtains and Blinds
Measuring service available

For free advice and consultation
contact me at

07985 935805

curtainsandblinds.creative@gmail.com

Facebook / Creative Curtains and Blinds

Instagram / Creative_Curtains_Blinds

Hedge and Tree Pruning – Cutting:

Landowners are being reminded that trees, hedges, ditches and other vegetation close to highways needs to be maintained with summer drawing to a close.

Overgrown vegetation can prevent roads and paths from being safe when wetter weather and shorter days draw near, blocking paths and restricting clear view of the highway.

Grass cut in wet conditions can also lead to clumps being deposited by lawnmowers onto highways. Therefore, grass cutting is ideally carried out when the weather is drier.

Landowners are responsible for maintaining foliage on their land, even if it is close to a road or pavement. They have a duty of care to take reasonable steps to prevent risk.

Overgrown vegetation can restrict paths, reduce sight, and cause floods when ditches and drains become clogged.

Now bird nesting season is over, landowners should carry out work such as:

- removing overhanging branches that obscure the view of the road
- removing overhanging branches that lower the road's clearance for tall vehicles, such as double-decker school buses
- trimming or removing trees that are in danger of falling onto the pavement or road
- removing overgrown shrubs that block lighting or traffic signs
- removing trenches on private property to prevent flooding when it rains

Most trees and hedges by roads are on privately owned land. Owners can include district councils, parish councils, housing associations, farmers and homeowners.

Essex Highways' £25 million Priority One programme of highways maintenance included 582 vegetation clearances during the summer.

Councillor Tom Cunningham, Essex County Council Cabinet Member for Highways, Infrastructure and Transport, said: "It is paramount that landowners maintain vegetation on their own properties to help ensure clear visibility on our roads and footpaths for pedestrians and road users alike.

"We appreciate the cooperation of landowners in carrying out these essential maintenance tasks. They play a crucial role in creating a safer, greener and healthier Essex, while helping to enhance the pride we all have in our great county.

Gosfield Girls WI

If you have an interest in joining us, then please come along for a taster session – first one is free! We meet for 11 months of the year at the Maurice Rowson Hall on the 3rd Thursday of each month at 7.30pm. We hope you can come along. All ladies are welcome.

Harvest appeal



Help support Braintree Area Foodbank

Donate food



Donate an item or two from our shopping list, ensuring we can provide food for people facing hardship in your community.

Donate money



We are having to buy food to fill our food boxes. A monetary donation will help us to do this
Search for us on Just Giving

Learn about what we do



We have a group of speakers ready and willing to come along and talk about the journey of a tin from donation to a food parcel
Please call 01376 330694

Shopping list

Breakfast cereal
Milk (UHT or powdered)
Instant Snacks i.e. Pot
Noodle
Cup soups
Biscuits
Tinned fish
Tinned vegetables
Tinned rice pudding
Jam

Braintree Area Foodbank

Including Great Notley, The Heddingham's and Witham

www.braintreearea.foodbank.org.uk

Registered Charity in England & Wales (1143446)
Registered Limited Company in England & Wales (7694263)



P Crawford Contracting Ltd.



Commercial & Residential Services

We provide a range of groundworks and construction services, along with specialised and seasonal agricultural projects, tree management, hedge cutting, track grading, composting, vegetation management and site clearance.

Our residential offer includes driveways, patios, landscaping and fencing.

✓ CHAS Accredited.
We work alongside ecologists too

✓ Safe, efficient and professional service across East Anglia & beyond

✓ 01787 277 710
info@pcrawfordltd.co.uk



www.pcrawfordltd.co.uk



Visit Martha's Tearoom, nestled in picturesque Greenstead Green Barns. Enjoy our selection of freshly brewed teas and homemade treats. Whether you seek a peaceful spot or a cosy gathering place, our tearoom is perfect. Join us Monday to Friday, 9 AM to 4 PM, or Sunday, 10 AM to 4 PM. For more info or to book a table, call 01787 703722. We look forward to welcoming you!

Address: Greenstead Green Barns, CO9 1QY

Afternoon Teas, private events and catering available



For further information on the Social Club, or if you would like to be emailed our newsletter detailing future events at the club, please email gosfieldsc@gmail.com

Your party, made better!

Weddings
Birthdays
Corporate

35 Years Experience
Expert Music Knowledge
Stunning Sound & Lighting

Ian Scott

www.djianscott.com



GOSFIELD
Exterior Cleaning

Certified pressure washing services across Essex

07481 799 955

Gosfield.ec@gmail.com



www.gosfieldexteriorcleaning.com

GROUPS, SOCIETIES AND COMMITTEES:

Toddler Group	Emma	07872-916917	
Gosfield Players	Jules Wilkinson	07958-903932	
Gosfield Rainbows	Stacey Creak	07814-233219	
Gosfield Brownies, Guides and Rangers	Gill Hillman-Crouch	01787-478097	Or: 07801-265603
Gosfield Beavers, Cubs and Scouts	Steve Sudbury	07885-467712	stephensudburygardens@gmail.com
Gosfield Girls Women's Institute	Joanne Hedley	07749-472832	
Gosfield Village Circle	Ann Willis	01787-274665	ann.willis2006@btinternet.com
Gosfield Community Shop	Brian Payne	01787-703787	thepaynes57@hotmail.com
Gosfield Horticultural Society	Rebecca Westover	01787-477331	
Gosfield in Bloom	Mandy Adams	01787-273494	mandyladams@icloud.com
Gosfield Fete Committee	Ian Scott	07798-753639	
Gosfield Open Gardens	Brian Payne	01787-473670	thepaynes57@hotmail.com
Gosfield Playing Field & Pavilion	Ann Willis	01787-274665	ann.willis2006@btinternet.com
Rowson Perpetual Fund	David Jarvis	01787-474562	davjar33@gmail.com

ST. CATHERINE'S CHURCH:

Priest -Reverend	Sue Goldsmith	01787-478471	halsteadrector@gmail.com
PCC Secretary	David Degnan	01787-472291	
Church Wardens	Jo Colyer	07894-577629	
	Judy Paterson	01787-472514	judith_paterson@hotmail.com
Wedding Co-ordinator	Rae Haylock	01787-472171	halsteadparish@gmail.com
Bell Ringing - Tower Captain	Laurence Carter	01787-472225	laurencecarter@gmail.com

Please note: bell ringing practice on most Tuesday evenings, 745 pm to 9.00 pm, novices and experienced ringers welcome.

FRAUD AWARENESS

Dear residents

It saddens me to have to try to reach as many people as possible to remind you about Fraud and scams currently doing the rounds. As hard as Essex Police and our fraud awareness team try to make you all aware, we are still having to deal with victims who get sucked in by them. Our Fraud Awareness team have provided me with the growing current (*and they are always changing*) list of scams which people have become victims to. Take the time to read through them and don't become a victim.

Courier Fraud / Fake Police Officer scam - is a massive scam that Essex is being hit by all to frequently.

Over the past few months, Essex has been targeted by criminals for these types of offences. The criminals are employing various methods from posing as Police Officers from multiple Essex Police Stations stating that they have arrested someone in possession of the victim's bank card to requesting financial information or asking victims to withdraw cash for a courier to collect as evidence. If you get any calls like this, STOP, it is a scam. The Police will NEVER ask you for financial details on the phone or request to collect your card or cash or gold as part of an investigation.

Doorstep Criminals

Look out for this scam; The victim had a male attend with a bag of cleaning goods, pressuring them to buy something. The victim agreed to buy items for £20 and was asked to pay by card. The criminal used his mobile phone which had an app to accept card payments. However, it was scam and instead of inputting £20, the offender changed it to £2,000 and unfortunately, the victim was debited this amount from their Bank account. Our basic protect advice is to never deal with cold callers on the doorstep. If they will not go away or become aggressive, then ring the Police.

Boots Scam Email

Look out for fake emails impersonating Boots. Action Fraud have received over 700 reports of these scams. The emails claim that the recipient has won a free prize, such as a Medicare kit and that they need to click on a link to claim it. However, it is a scam, and the link will take them to a realistic looking website, under the control of the criminals, where they will steal their personal and financial data. Best advice is not to click on links in emails and to go to the official website to check or confirm by calling the organisation. Do not use telephone numbers contained within the email.

Fake Compensation Email

Over 4,800 people have reported receiving FAKE emails claiming that diesel car users are eligible for thousands of pounds in compensation and asking them to click on a link. However, by clicking a link the victims were taken to a realistic looking website under the control of the criminals, where they stole their personal and financial data.

M & S

Due to the recent cyber-attack customers who have a M & S bank account, Sparks card, shopping account etc may receive emails from scammers as customers names and email addresses have been compromised. Be vigilant with any emails received – any stating you have won a prize; £100 Golden ticket, Tea for 2 Shopping Hamper; asking you to click on a link and change your password, asking you to verify your details should all be treated as a scam – do not log into any M & S account from an email. M & S are gradually returning to normal trading conditions.

Distraction Theft

We have recently identified a series of incidents involving an organised group targeting various town centres. These individuals appear to be monitoring people in banks and at ATMs, following them, and using distraction methods to steal money. The group is believed to involve one female and several males. Be very aware of who is around you or near to you when withdrawing money inside or outside of any Bank of Building society.

Common Methods to Be Aware Of:

Spilling on Clothing: The most prevalent method involves spilling a substance on the victim's clothing to create a distraction.

Pin in Tyre: Another tactic includes following the victim to their car and informing them of a pin in their tyre, then proceeding to steal from them.

FRAUD AWARENESS, continued:

Amazon

Fake emails regarding Amazon Prime Subscription. It appears customers details have been gained from other sources in attempt to appear legitimate. Do not click on any links purporting to be from Amazon. If you have queries – sign direct into your mobile app or go to Amazon.co.uk and sign in direct to your account to check for payments or send any messages to Amazon. Any messages sent to you from Amazon will be in your message centre on your account.

Fake Weather Payment Email Scams

This one is still doing the rounds!..... Action Fraud has received over 4,000 reports of suspicious emails relating to the winter fuel payment and other winter support schemes. The emails impersonate various government agencies such as HMRC and instruct the recipient to make a claim using a link within the email. However, it is a scam, and the link will take them to a realistic looking website, under the control of the criminals, where they will steal their personal and financial data.

Remember – Police will never ask for any personal details, we will never ask you to withdraw money for us to collect and reimburse you, we will never call you to say we are investigation a member of bank staff – we will never call you to ask for your bank account details or card details – if you are not sure then don't interact with any caller. Hang up the phone or close the door and contact either your bank or police to verify.

Take care, be safe and look out each other.

Terrie Johnson, PCSO 8143, Braintree Neighbourhood Policing team

GOSFIELD CARPET BOWLS CLUB

In order to maintain a high level of competitive ability within the club, it has been decided that the club will only play regular “friendly” matches against clubs that are relatively close to Gosfield so that travel distances, both in bad weather and the dark winter nights, is not so much of a problem.

It has been suggested that perhaps where some clubs that only play during the afternoons, we may play several friendly games against them to see the interest that our club members may have in including these games within our playing program in the future. Perhaps even playing away in the afternoons and at home in the evenings against these clubs.

Our club continues to grow with a regular membership of 20 members. We play club nights on a Monday and Wednesday evenings with members playing on both evenings, or on an evening that suits them. The club has a few vacancies at present, should you wish to try your hand at Carpet Bowls which is both competitive and enjoyable please visit the club on a normal club evening within the Rowson Hall.

Paul Nicklin, Gosfield Carpet Bowls Club.

Ongoing planning applications for building works are as follows:

Application for Certificate of Lawfulness for a proposed development: Use of dwelling as a short-term rental, Bournebrook The Street Gosfield Essex CO9 1TU, Ref. No: 25/01799/PLD

Application for Certificate of Lawfulness for an Existing Development - Single storey rear extension, 2 Park Hall Cottages Parkhall Road Gosfield Essex CO9 1SG, Ref. No: 25/01653/ELD

GOSFIELD VILLAGE ENTITIES

SCHOOLS:

Gosfield Primary School	Joanne Deaves (Head Teacher)	01787-472266	admin@gosfield-pri.essex.sch.uk
St. Margaret's School	Carolyn Moss (Headteacher)	01787-472134	admin@stmargaretsprep.com
Gosfield School	Rod Jackson (Principal)	01787-474040	enquires@gosfieldschool.org.uk

SPORTS CLUBS:

Gosfield Carpet Bowls Club	Paul M Nicklin	01787-478269	paul.nicklin39@gmail.com
Gosfield Lake Golf Club	Tony O'Shea	01787-474747	office@gosfieldlakegolf.club
Gosfield Juniors Football	Mark Wiskin	07930-990013	
Gosfield United Football Club	Simon Fraser (Chairman)	01206-211470	
Gosfield Tennis Club	Richard Waters	07900-236754	gosfield-tennis@hotmail.co.uk
Gosfield Lake	Linda Turp (Office Manager)	01787-4785043	turps@gosfieldlake.co.uk

PUB, CLUB and EVENTS HIRE:

Maurice Rowson Hall	Amanda Degnan	07308-530638	rowsonhall@gmail.com
The Kings Head		01787-474016	
The Social Club	Becky	07960-014607	gosfieldsc@gmail.com
The Apple Tree	Maxine and Keith	01787-477715	enquiries@theappletreegosfield.co.uk
Courtyard Brewery	Tanya and Marc	07710-230662	

GOSFIELD SUPPORT:

Neighbourhood Watch Group	Louise Smith	07962-268376	
Community Agent			

GOSFIELD POLICE COMMUNITY SUPPORT OFFICERS (PCSO):

PCSO 70714	John Thorne	07812-068636	John.Thorne@essex.police.uk
PSCO 70955	Jo Cooper	07812-068697	Joanne.Cooper@essex.pnn.police.uk



FOR EVERY ASPECT
OF TREE SURGERY
& HEDGE CUTTING

ALSO SUPPLY LOGS + WOODCHIPS

£10 MILLION PUBLIC LIABILITY

CALL US FOR A FREE QUOTE
07717 844 885
01787 479 570



For more information,
please e-mail
gosfieldsc@gmail.com

**New members
welcome**

The Street, Gosfield
Fully licensed bar with
wide range of drinks
Large comfortable seating area
Two full-size snooker tables
and pool table
Open from 8pm Tuesday to Saturday
Membership £10 per year
(£5 for seniors and juniors)
Joint membership also available.



Y O G A

EVERY MONDAY
At Halstead Community Shed
Fenn Road
Halstead
CO9 2HG
19:00 - 20:00
£8

EVERY TUESDAY
Maurice Rowson Hall
Church Road
Gosfield
CO9 1UB
19:15 - 20:15
£8

BOOK YOUR CLASS & LEARN MORE
ABOUT ME AT:
www.honourthroughmovement.com
07738969626

07738-969626

24



Gosfield School
NURSERY ■ PREP ■ SENIOR ■ SIXTH FORM
A CO-EDUCATIONAL INDEPENDENT THROUGH SCHOOL
Knowing Every Child ■ Nurturing Potential

Award Winning
Performing
Arts Academy

George Fisher
Netball Academy

Award
Winning Cricket
Academy

Open Mornings
October and March

Private Tours
Available On Request

01787 474040
admissions@gosfieldschool.org.uk
www.gosfieldschool.org.uk



Find Out More

21



DISCOVER



THE LAKES COURSE

THE LAKES 18 HOLE COURSE

Our Championship Lakes Course designed by 3 time Open winner Sir Henry Cotton, is sculptured into 160 acres of stunning and historic parkland and ancient woodlands.

Set in peaceful surroundings, the 6700 yard, par 72 course boasts gently undulating fairways, challenging water hazards and perfectly manicured greens.

It is truly a great test for all levels of golfer.



MEMBERSHIP

New Members rates start January 1st 2025 - 15 Months of Membership for the price of 12!

Lakes and Meadows courses offer great value for money for the regular golfer.

We cater for the newcomer and seasoned golfer offering a wide choice of opportunities for our members to join in and make the most of their Membership. You also get great benefits inc. England Golf Affiliation, Liability Insurance and Clubhouse Deals.

Our team will help new members to become involved with all aspects of the game making this New Year a great time to start.

Call our Memberships team on 01787 474747



We are an accredited Safe Golf Course so you can rest assured of the welfare of your children.



HIDDEN GEM



THE MEADOWS COURSE

THE MEADOWS NINE HOLE COURSE

The Meadows Course is an outstanding course for the new and aspiring golfer. Regarded by many seasoned golfers as a challenging par 4 course, it is a great place to start your golfing journey.

Particularly suitable for the younger golfer, we have coached groups of Juniors regularly honing their skills on shorter tees.

It truly is a "Hidden Gem"...and is the perfect introduction to Golf.



CLUBHOUSE

In the Clubhouse you will find a great selection of freshly prepared food choices. From Bar Snacks to full 3 Course Menu options to tempt the most discerning palate!

A warm welcome and great service completes a great experience - topped off with breathtaking views across the Lakes Course

PRO-SHOP

Great range of products for the beginner to aspiring Golfer...Juniors especially catered for. Pop in and have a chat - upgrades and lessons. Regripping and maintenance of your gear is important too...let us look after you.



For Membership and Societies, please call: 01787 474747

For Tee and Buggy bookings, speak with the Professional Shop: 01787 474488

For Events and Hospitality please call the Clubhouse: 01787 474400