

An M.P. who knew his place

AS OUR MEMBERS OF PARLIAMENT push in another bill for cleaning the swimming pool or submit ever more extravagant bills for their so-called expenses, they must surely be grateful to the people who voted them into this privileged position. If they need a lesson in humility perhaps they should follow the lead of the newly elected M.P. for Chelmsford in his letter to the Essex Chronicle in 1772.

To the GENTLEMEN, CLERGY AND FREE
HOLDERS OF THE COUNTY OF ESSEX.

GENTLEMEN

HONoured as I am this Day by your Election of me to be your Representative in Parliament in so unanimous and distinguishing Manner, I cannot omit the earliest opportunity of Expressing my warmth and Acknowledgments, and assure you I shall retain a just sense of so great a Confidence and will endeavour by my conduct in the trust resting in me to give you the best Proofs of my Gratitude in our future together.

I am, GENTLEMEN

With every Respect

Your most obliged

And devoted (sic) humble Servant,

JOHN CONYERS

Chelmsford
Feb. 23, 1772

GALLEYWOOD HISTORICAL SOCIETY

President Ted Hawkins

Chairman Graham Mundy **Vice Chairman** Colin Baddock

Secretary Sarah Walters **Treasurer**

Programme Director Ted Hawkins **Archive Director** Philip Walters

Committee Madeleine Howard David Stacy Derek Waters

Comments or contributions to this Newsletter would be welcomed by the editor
David Stacy at Haldon, The Common, Galleywood, CM2 8JX
email davidstacy@btinternet.com

Another Successful Workshop



Susan Wilson (nearest to camera) helps Marjorie Mead with her research

The Archive Group of our Society held another Family History workshop in the Lodge Room of the Keene Hall on May 9. About 15 people attended, some travelling from Heybridge. After a brief introductory talk the visitors browsed the displays and tried out some ancestry research on the computers kindly set up by John Turkentine. Our team were on hand with help and advice.

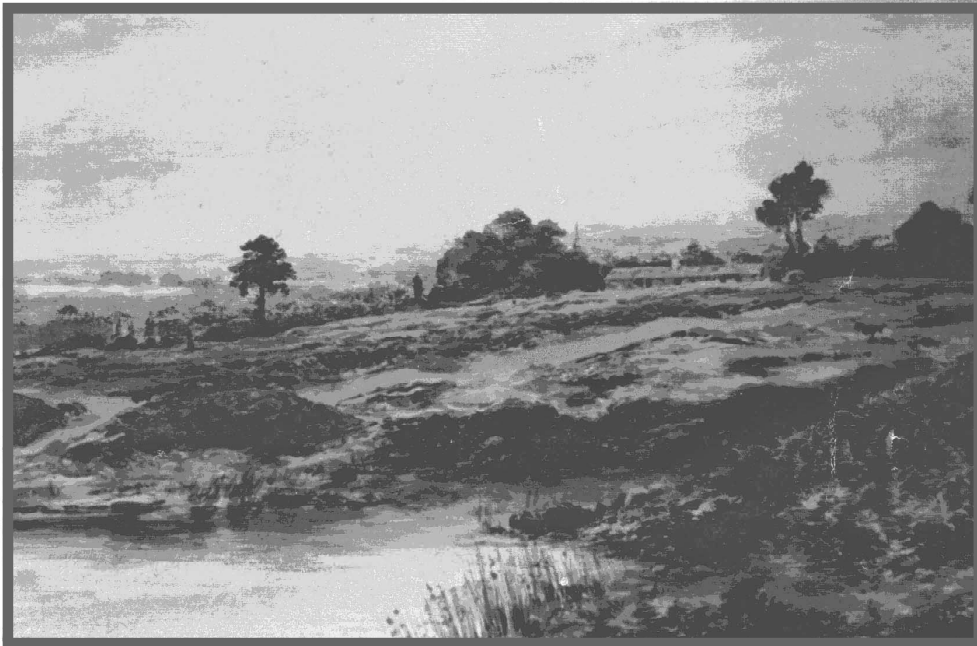
At least two new members joined our Society and the morning was well received by all who attended. The next workshop will be on September 12 this year.

Our next
meeting

Galleywood Common 1400 – 1800

‘The way we were then’

A talk by Christine Whybro



from a painting by Caroline St John Mildmay c1870

Wednesday 3 June 2009

Keene Hall Watchouse Road at 8 pm

DATES for your Diary

2009

16 September

GALLEYWOOD COMMON 1800 - 2009

‘THE WAY WE ARE NOW’ by Leslie Whybro

18 November

WORLD WAR TWO: Life on the Home Front
1939 – 1945

Pauline and David Scott

with a surprise visit by a V.I.P. and a mini exhibition

The story of a search

THE KEEN HISTORY RE-SEARCHER is often despatched down a trail of investigation by the smallest of clues. Your editor was recently scanning the pages of the Essex Chronicle on the microfilm reels at the library and chanced upon the advertisement shown here. The issue was published on Friday March 10, 1769. A property was advertised ‘To Let on Galleywood Common’. Where was it?

The Common would have covered a far wider area than it does today of course. The fact that the Maldon coach passed by the house every day led me to guess it would have been somewhere along what today is called Watchouse Road. The house was lately occupied by Richard

Hinde and so I turned to our expert family history buff, Wendy Cummin. Wendy could find no trace of Richard Hinde in Google or the ERO Catalogue so she looked at Documents Online and found his will dated Great Baddow 15 October 1768. As the article appeared in 1769 we assumed he had died at that address. Wendy also traced the name of his wife, Elizabeth Romey in Herts Archives.

A look at the old maps revealed little about large houses along the Maldon Road at that time. The only contemporary documents relating to *Seabrights* relate to farmland with no mention of a house. Wendy could find nothing related to *Galleydene* that far back and wonders if the name had changed. Documents dated 1873 describe *Galleydene* as occupied by Rev de Lisle with land and farm let to Mr Rayner. The house contained dining and drawing rooms, 4 bedrooms, dressing room, kitchen, pantry and cellar. With wood-house, stable, chaise-house, front garden and productive kitchen garden with extensive farm premises and 3 enclosures of land. This all being smaller than the ‘10 acres’ offered in the advertisement. A final clue may lie in the contact name ‘W.M. Probably well-known. Wendy has also given me a copy of the Will. She is probably more skilled than me at interpreting the ancient English script used for these documents but I cannot find any significant information in this copy. A William Middleton was witness to the will but we can’t find him anywhere.

So, where was our house? It must have been around here somewhere. I wonder if Christine Whybro is going to shed any light on this conundrum when she talks to us in June.

To be Let

Pleasantly situated on Galleywood Common, in the county of Essex, about two miles from Chelmsford, four miles from Ingatestone and five miles from Billericay Market towns, lately occupied by Rich. Hinde, Esq.

A Good House, four Rooms on

1 floor, with Coach House, Stables and all conveniences. A Garden laid out in good Taste, with a variety of Choice Flowering and other Shrubs and Plants. An elegant Bason well stocked with Carp. A Green House and small Kennels that will do for 12 or 14 couple of dogs - The Maldon Coach passes by the house every Day.

The Premises to be let by the Year or the remainder of the Lease (of which there are about 14 years unexpired) to be sold. There are ten acres of Land, and a Right of Common. The person in the House will shew the premises and for particulars apply to W.M. at the Grecian Coffee House, Temple.