

Walks from Great Horwood



Almost to Addington (about 7km, less than two hours)

This walk takes you along the long distance footpath to the Buckingham – Winslow cycleway near Addington, returning along the same route. The walk can be extended by continuing along the cycleway to Winslow, Addington or Adstock.

There are eight gates along this walk, together with four footbridges and four stiles.

Walking a dog? Check the last page for advice.



Start from The Green by walking down High Street in front of the Church.



Cross the road and then turn left to walk down the narrow footpath between the houses [1]. On meeting Spring Lane [2], continue straight down the hill. After the houses, but before Horewode Pece recreation ground, the road crosses a stream. Turn right through a gate onto a footpath before the stream [3].



Follow the path to another gate [4].



Continue along the enclosed footpath to another gate and a footbridge [5].



The footpath continues to a gate on the B4033 Winslow – Great Horwood road [6].



Turn right along the road, past the speed limit signs and into the village. Opposite the white house on the right there is a footpath sign indicating the North Bucks Way (also known as the Midshires Way). Cross the road and go through the gate [7] into the field.



The path here is indistinct. Head across the field to the right-hand edge of the trees in the distance. After a few minutes a gap will be visible between the trees and the hedge.

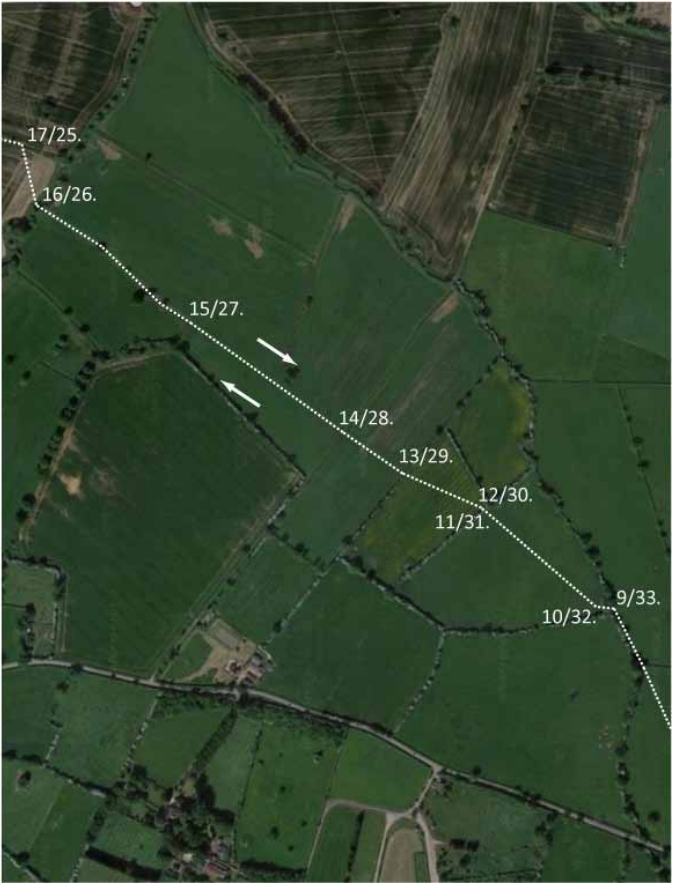


There is a stile in the gap [8]. Cross the stile and the footbridge, and then continue along the left-hand edge of the field to another gate [9] and footbridge.



Go through the gate [9] and cross the footbridge. Then go through the gate on the far side of the footbridge [10]. In the next field the path leads to a gap in the trees [11].





Cross the stile in the gap [11], and then cross the footbridge and the second stile [12]. Note that the steps on the second stile are slightly loose.



Continue in the same direction across the next field to a gate [13].



Continue across the next field to a gap in the hedge [14].



Continue in the same direction until the left-hand field boundary closes in [15].



Follow the left-hand field boundary as it curves gently towards a footbridge [16].





The path curves slightly to the right, towards a gap in the hedge [17].



Go through the gap and turn left along the edge of the field. At the corner of the field [18] turn right.



Continue along the edge of the field to a farm track [19]. Hanover Farm is on the left.



Turn left at the farm track, and then immediately turn diagonally right onto the footpath across the field [20]. At the end of the footpath is the A413 Buckingham – Winslow road, with the cycleway along the nearside of the road over the stile [21]. (You could continue the walk along the cycleway; left to Winslow, right to Addington or Adstock).



Retrace your steps to return to the village, crossing the field towards the farm track [22].



Turn left at the farm track [22], and then immediately right [23]. Continue along the right-hand edge of the field towards the hedge [24].



Turning left at the hedge [24], continue with the hedge on your right, to a gap [25]. Turn right and go through the gap [25].



Bear slightly to the left, following the path across the corner of the field to a footbridge [26].



Continue along the right-hand edge of field as it curves round slightly.



As the field opens out to the right [27], the path continues in the same direction, with Great Horwood church tower visible on the horizon. Aim for gap in hedge [28] slightly to the left of the tower.



Continue through gap to a footbridge and gate [29].



Go through the gate [29] and across the next field to a stile [30]. Cross this stile (the steps are slightly loose), cross the footbridge, and then cross the second stile [31].



Continue in the same direction towards the far left-hand corner of the field.



Go through the gate [32], then cross the footbridge and go through the second gate [33].



Turn right after the gate [33] and continue along the edge of the field, and cross the stile [34] into the next field.



This field has an indistinct path, so cross it diagonally, aiming for the white house on the horizon. In the corner of the field is a gate [35] onto the B4033 Winslow – Great Horwood road.



Although the North Bucks Way is signposted to the left along the road, you can also return to the village through Spring Lane. To do this, turn right and walk along the road, keeping aware of oncoming traffic. Soon after the sign indicating the end of the village speed restriction is a footpath sign. Cross the road and go through the gate [36].



Continue to a gate and footbridge [37].



Continue along the enclosed path to a gate[[38].



Continue along the path to the final gate [39]. Turn left into Spring Lane, and walk up the hill into the village.



Advice for dog walkers

Here is advice from the Countryside Code, published by Natural England in 2016.

When you take your dog into the outdoors, always ensure it does not disturb wildlife, farm animals, horses or other people by keeping it under effective control. This means that you:

- keep your dog on a lead, or
- keep it in sight at all times, be aware of what it's doing and be confident it will return to you promptly on command
- ensure it does not stray off the path or area where you have a right of access