

Walks from Great Horwood

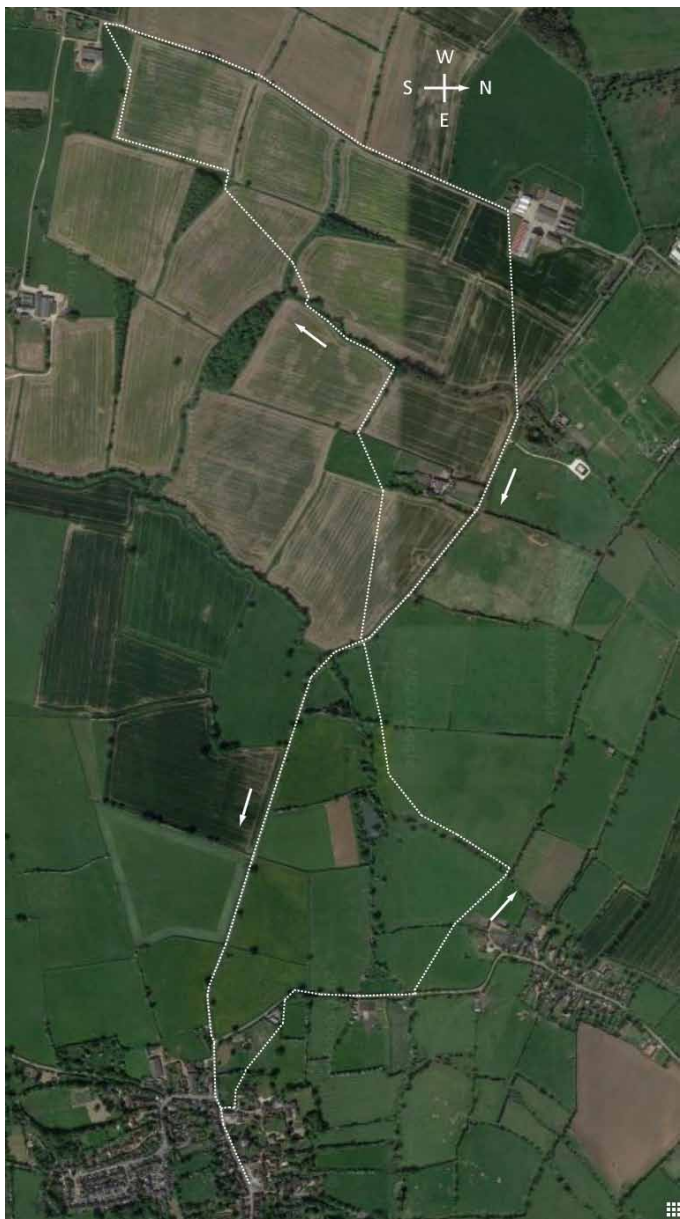


Towards Adstockfields House (about 7km, less than two hours)

This walk takes you across the fields to a farm on the edge of Adstock, returning first on a bridleway and then along the road, making a figure-of-eight. You can of course take either or both loops in the opposite direction. This walk also takes you near to the Pilch Field Nature Reserve, so you could combine the two walks.

There are twelve gates on this walk, together with four footbridges and two stiles.

Walking a dog? Check the last page for advice.



Start from The Green by walking down High Street in front of the Church.



Just past the Village Hall, turn right into School End [1], and then turn left onto the footpath just before Orchard Cottage [2].



Go straight ahead through the gap in the hedge, towards the enclosed path.



The path curves round to the right, leading to a walkers' gate [3]. Go through the gate.



Turn right through gate [3] and you will see a field gate [4]. Go through this gate, and then walk diagonally to the far corner of the field.



Continuing towards the gap in the hedge, you will meet a stile [5]. Climb over the stile and turn left.



Continue along the left-hand edge of the field to a walkers' gate [6]. Go through the gate and turn right along the road.



The road bears round to the right, and then to the left.



As the road starts to climb the hill into Singleborough, you will see a footpath sign on the left. Turn left onto this footpath and go through the walkers' gate [7].



Walk uphill from the gate, bearing slightly to the right, in the direction of the tall tree. Continuing in the same direction, go through the gate ahead [8].



Continue in the same direction, towards the centre of the group of trees. At the bottom of the valley is a gate [9].



Go through gate [9] and across the footbridge over the stream. Ignore the stile on the right. Instead, turn left into the large field.



Continue along the left-hand edge of this large field. About two-thirds of the way along, the path curves away to the right [10].

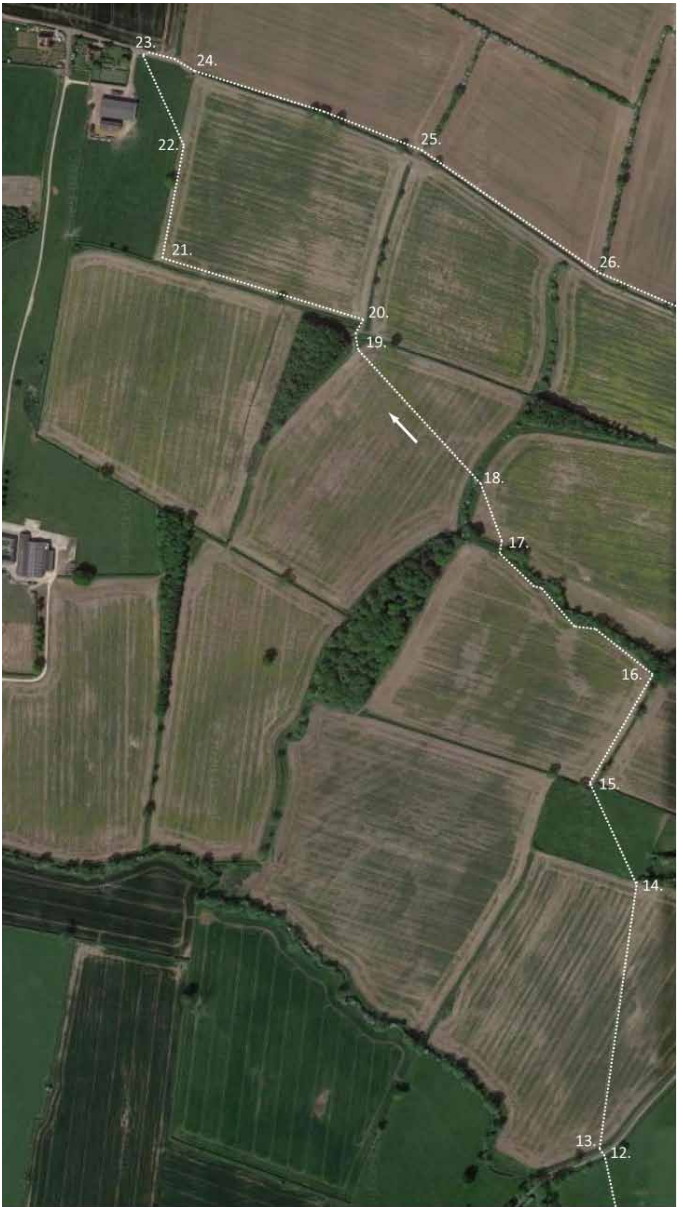


Keep following the path as it turns to follow the far edge of the field, to a gate in the far corner [11].



Go through this double gate [11] and walk across the next field to another gate [12].





Go through this gate, cross the road and go over the footbridge on the other side [13]. In the next field, bear right slightly and cross the field to a gate by the left-hand end of a group of trees [14].



Go through this gate, and walk diagonally across the next field to another gate [15].



Go through this gate and follow the right-hand edge of the field.



Continue to the end of the hedge and then turn left [16] along the far side of the field.



The path swings round to the right, and then to the left.



Continue along the path, but before the end of the field there is a footbridge on the right [17]. Go over the footbridge and follow the path to the left.



Cross the corner of the field diagonally to a small footbridge [18].



Continue diagonally to the far right-hand corner of the next field [19].



Do not take the track slightly to the left between the trees and the hedge. Instead, curve round to the right, and then turn sharp left [20] (with the hedge now on your left) to walk along the edge of the field.



Continue to the end of the field and turn right at the corner [21]. (In fact the right of way cuts off the corner, but it is easier to walk along the edge.) You will now see a barn in the field on the other side of the hedge.



About two-thirds of the way along the field edge is a gate in the hedge on the left [22]. Go through the gate into the field with the barn.



Walk diagonally to the right across the field to a gate in the far corner [23]. The house beyond the fence is Adstockfields House.



Go through the gate and turn sharp right along the road. When the road swerves to the right into the farm, continue straight ahead on the bridleway along the right-hand edge of the field [24].

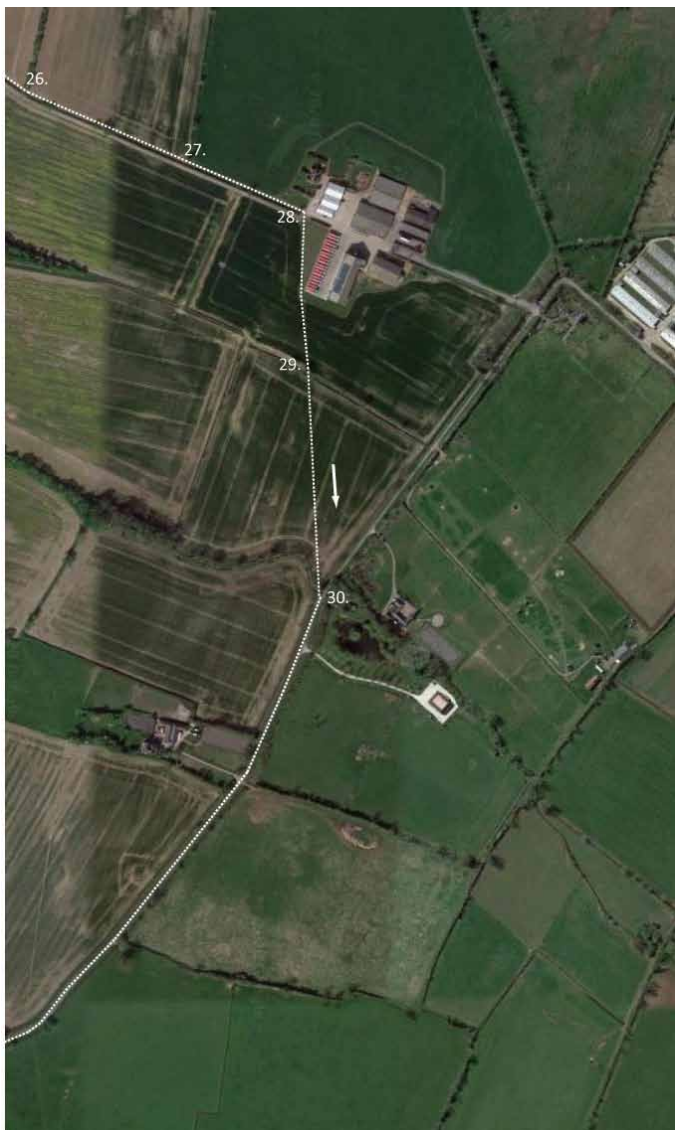


Continue along the bridleway to the end of the field, and then into the next field [25].



Follow the bridleway to the next field [26].





Continue to the end of the next field [27], entering Pilch Farm.



The bridleway continues through Pilch Farm to the road and the Pilch Field Nature Reserve. The walk to the reserve provides an alternative route back to the village across the fields. But for the present walk, take the bridleway only to the end of the hedge where the farm road rejoins it, and then turn diagonally right [28] onto a footpath towards the far corner of the farm buildings [29].



Continue diagonally along the path to a stile [30] at the field boundary before the electricity pylons.



Continue diagonally to the gate at the far corner of the field [31].



Walk round the right-hand side of the gate, and turn right on the road back to the village.



Advice for dog walkers

Here is advice from the Countryside Code, published by Natural England in 2016.

When you take your dog into the outdoors, always ensure it does not disturb wildlife, farm animals, horses or other people by keeping it under effective control. This means that you:

- keep your dog on a lead, or
- keep it in sight at all times, be aware of what it's doing and be confident it will return to you promptly on command
- ensure it does not stray off the path or area where you have a right of access