

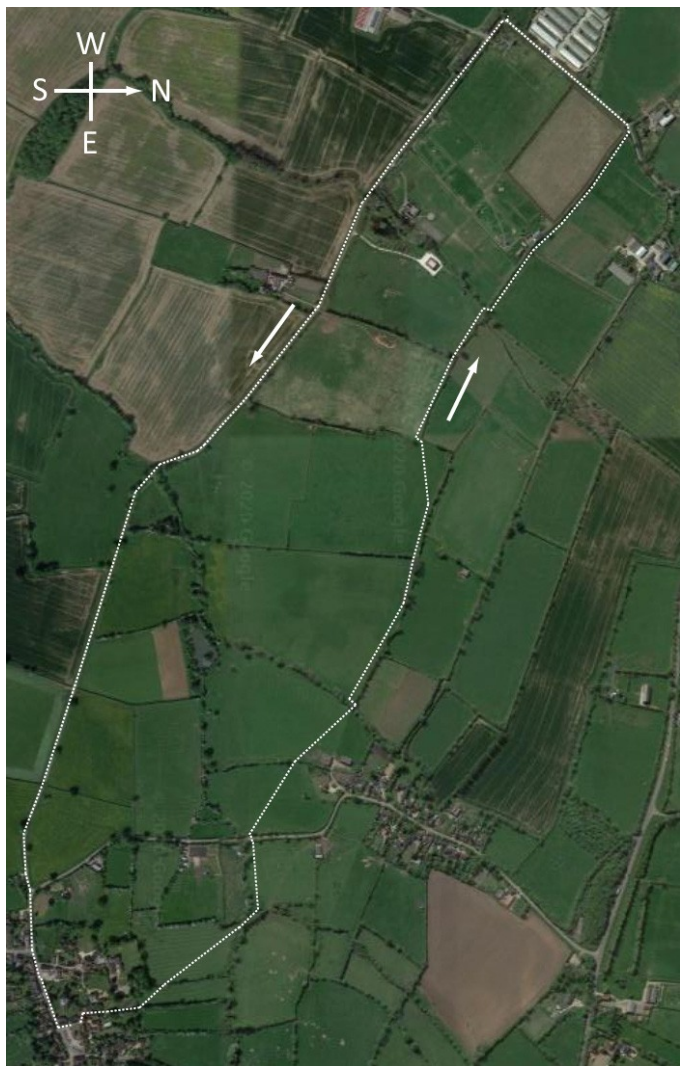
Walks from Great Horwood



To Pilch Field Nature Reserve (about 6km, less than two hours)

This walk takes you across the fields to the nature reserve, returning along the road. You can of course do the walk in the opposite direction, or simply retrace your path across the fields to avoid the road (almost) completely. Another option is to use the road only from the nature reserve to Pilch Lane bridge, returning to the village across the fields.

There are two stiles on this walk, one of which is quite awkward, together with eight walkers' gates and four footbridges.



Start from The Green by walking into Church Lane, to the right of the churchyard.



Continue along Church Lane past the few houses; the road soon becomes an enclosed footpath. Go through the gate [1].



Aim slightly to the left, and walk across the field to a gap in the hedge [2].



Continue across to the far corner of the next field.
Go through the gate [3].



Walk a short distance along the enclosed path, and cross the stream over the footbridge. Go through the gate at the end of the footbridge [4].

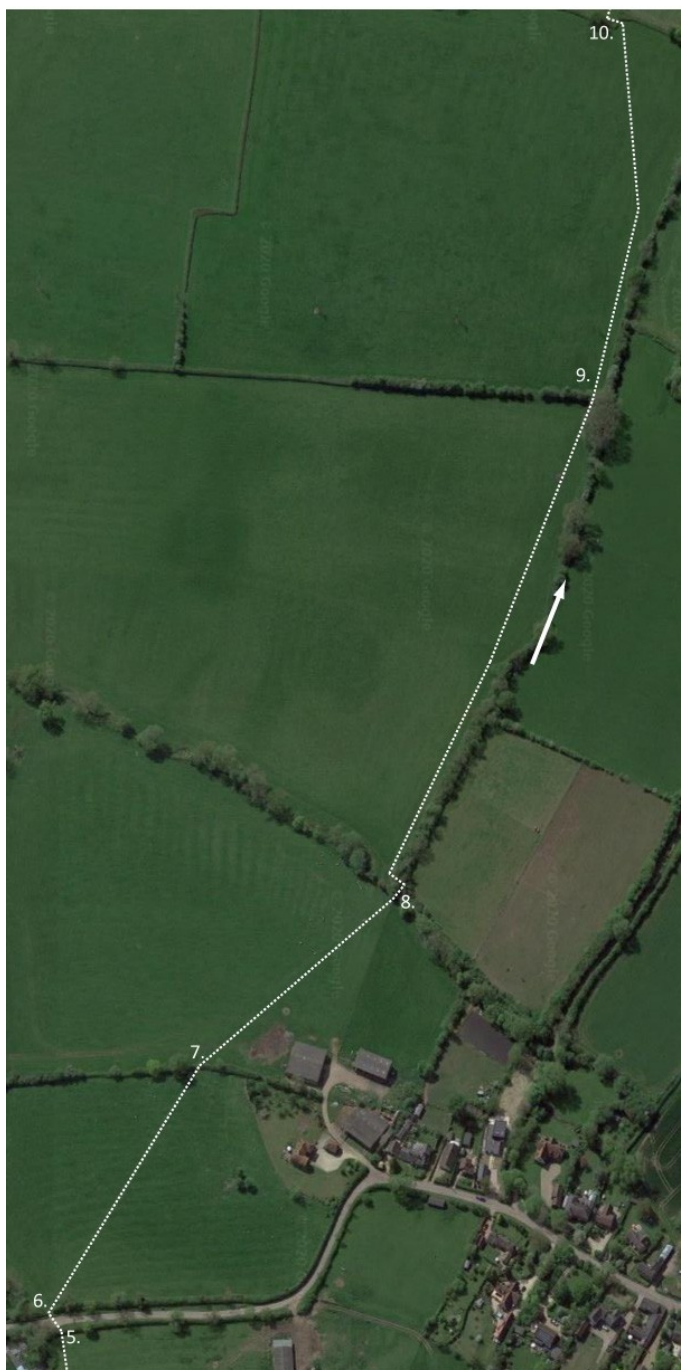


Turn left after passing through the gate, and walk towards the trees along the left-hand side of the field. As you approach the trees, you will see a gate [5] at the far side of the field.



Continue towards the gate [5], passing through it and walking the short footbridge. Cross over the road and go through the next gate [6] by the footpath sign.





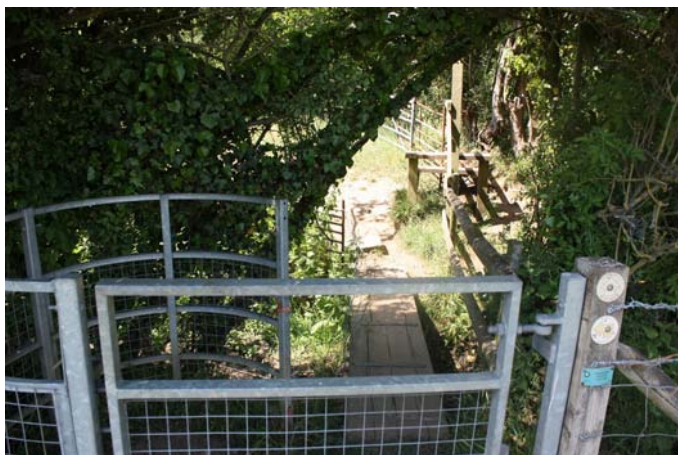
Walk uphill from the gate, bearing slightly to the right, in the direction of the tall tree. Continuing in the same direction, go through the gate ahead [7].



Continue in the same direction, towards the centre of the group of trees. At the bottom of the valley is a gate [8].



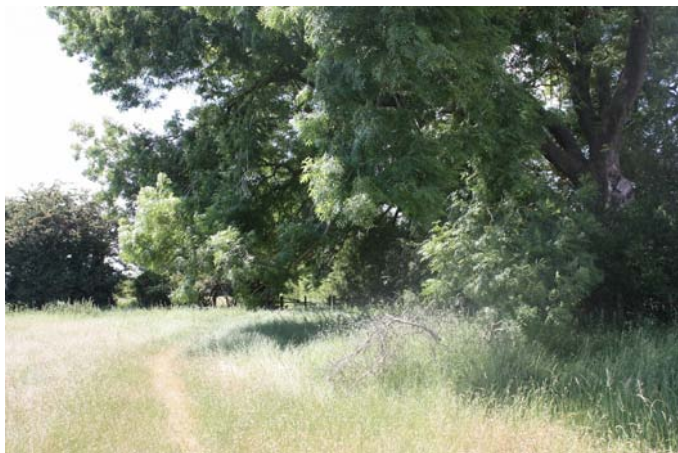
Go through the gate [8] and across the footbridge over the stream. Ignore the stile on the right. Instead, turn left into the large field, but then immediately turn right.



Walk uphill along the right-hand edge of the field.



Continue in the same direction along the edge of the field until you arrive at a wooden gate [9]. Go through the gate into the next field.





Continue in the same direction, along the right-hand edge of the next field.



After a while the path moves away from the right-hand field edge, and leads to a stile [10] at the far edge of the field. This is quite an awkward stile, as it has only a single step. You might find it easier to climb over the metal gate to the right of the stile instead. (You should also step over the insulated electric cable in front of the stile.)



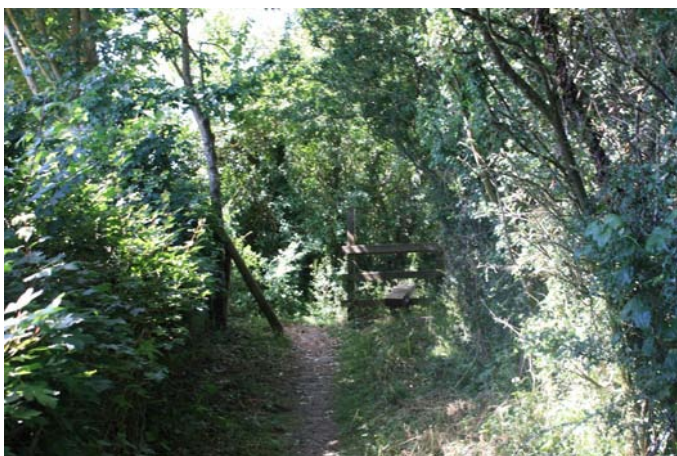
Turn right over beyond the stile, and follow the right-hand edge of the field.



Keep following the field edge, until you arrive at a wooden gate [11]. Go through the gate.



Continue in the same direction, following the enclosed path towards what appears to be a stile [12].



In fact it is possible to walk around the left of the stile [12]. Do so, and cross the footbridge over the stream. Then turn left to continue with the hedge on your left and a fenced-off field on your right. You are now walking along the parish boundary.





Continue in the same direction between the hedge and the fence [13].



Eventually you will reach a stile in the far left-hand corner of the field [14]. Cross over the stile, and turn left along the road.



Continue along the road until it turns sharp left.



The entrance to Pilch Field Nature Reserve is on the right-hand side of the road, where it turns sharp left [15]. The site is managed by BBOWT, the Berkshire, Buckinghamshire and Oxfordshire Wildlife Trust, and is a Site of Special Scientific Interest. There is a permissive path to the Nature Reserve.



Return to Great Horwood by continuing along the road.



Just before the Pilch Lane bridge there is a footpath sign on the left. This is the path across the fields from the village to the bridge, and gives an alternative route back to the village if you wish to leave the road.

