



GREAT HORWOOD FETE & DOG SHOW

What a fantastic day back on Saturday 3rd July. It was a wonderful village event which brought the whole community together... I can't remember when the Fete and Dog Show has ever been busier. The main beneficiary was the much-needed funds to repair the Church Roof. £2800 was a brilliant effort.

I would just like to thank everyone involved for making it a day to remember and a chance for our community to get together after all the lockdowns.

So here goes: to the WI for their ongoing support, The Silver Band, the Scouting organisations, the School & PTA, all the wonderful stall holders, and all the helpers on the day with gazebos, tables and chairs.

Thanks to Tim for coming back to do the BBQ again this year, The Shoulder of Mutton for providing the beer for the bar and Sean & Sara for serving it.

A huge thank you to the Dog Show team led by Lou, and for our excellent judge Brian.

Finally, a massive thank you to the organizing team of the Fete & Dog Show:

Sara Lou Mel Dawn Jane
Yvonne Sarah Frances Andrew Janthea

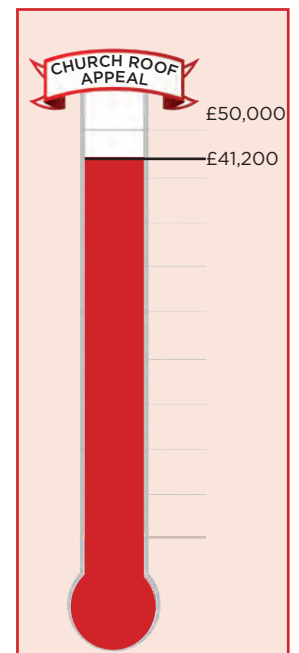
David Brazier



A massive **THANK YOU** to David from all of us for his pivotal role in organising the Fete.



PHOTOS: NICK BISWELL



HomeGym Equipment available for hire



- Treadmills
- Cross Trainers
- Bikes
- Rowing Machines
- and much more






Refer a friend for a weeks

FREE HIRE

Call 0800 043 2148

enquiries@homegymuk.com

www.homegymuk.com



5 Star rating *****

Greenway Dog Walking

DAYCARE AND BOARDING WITHIN THE FAMILY HOME
 GROUP OR INDIVIDUAL WALKS, POP-INS
 QUALIFIED CANINE 1ST AID AND EMERGENCY CARE
 CPD CANINE BODY LANGUAGE
 FULLY INSURED AND LICENSED LC-201905 37236
 BUCKS CC

FIND US ON FACEBOOK
 PLEASE CALL LOUISE FOR ANY ENQUIRIES
 07889658215
 BASED IN GREAT HORWOOD



Light up the tower of St James

If you wish to sponsor the tower lights for that special occasion, please help us by using this form for your request.

I would like to sponsor the lights on the following date(s):

Date:
Commemorating

Date:
Commemorating

The cost is £5 per night.
 Cheques payable to: Great Horwood PCC.
 Please send to Ian Lamberton
 3 The Green, Great Horwood MK17 ORH.
 Tel: 01296 715968



CALLINGHAM'S
 PAINTER & DECORATORS

Quality Decorators
 Over 15 years experience

- ∞ Interior and Exterior
- ∞ Hand Painted Kitchens
- ∞ Airless Spray System
- ∞ Free Quotations and Friendly Advice

Contact
 01280 816699
 07941 054 831
 www.callinghams.com




Church Times

Rev Andrew Lightbown
e-mail alightbown@hotmail.co.uk phone 01296 712564
www.winslowbenefice.org.uk

All our services are at 11.00 on Sundays. We are gradually getting back to normal services and now can once again enjoy singing hymns and having tea and coffee after the services. The Service on the 26th of September will be to celebrate our Harvest Festival and we will once again be accepting donations of food items which will be donated to Milton Keynes food Bank after the service.

David Brazier & June Margerrison, Churchwardens

SAINT JAMES GIVING DAY

Our annual giving day is on Saturday 25th of September between 10.00 and 13.00 at Saint James. There is a giving envelope enclosed in Focus so bring it along on the day or hand it to any member of the congregation. If you would specifically like your donation to go to the Church Roof Appeal please write 'Roof' on the envelope. If you would like to make a donation by card please call Russell on 714554 to arrange.

CHURCH CLEANER REQUIRED

Can you spare a couple of hours once a fortnight to help keep the church clean?

We need a little help and are happy for the hours to suit the individual £15.00 per hour. If interested please call David on 714712 or June on 714554

1ST GREAT HORWOOD SCOUT GROUP

Well what a year it has been!!

We have worked online via Zoom with the Young People but are now fully back to face-to-face Scouting and have been since March.

Our numbers of Young People have increased over this last term, and we are now looking to recruit more Adults.

Volunteering is on a more flexible basis now and we have a number of roles open.

If you are looking to add to your CV or work in the community then why not try our 4-week challenge in September.

The Young people and Adults have enjoyed enormously being part of village life, taking part in the Village Litter Pick and the Village Fete and are always looking at ways to help and support the Village.

This term sees all the sections going off on residential; oh the joys of camping, nothing like sitting round a campfire!!!

For more information on volunteering please contact:

Yvonne Taylor, Group Scout Leader
adcbandc@uwclub.net
07931 585926

GREAT HORWOOD SCHOOL

Vacancy: Breakfast Club Supervisor

Great Horwood

Church of England Primary School

Fixed term initially for 1 year,
term time only, 38 weeks

Monday to Friday 7.40am-8.40am
£8.91 per hour

Great Horwood School is a warm welcoming learning community where our children and staff "learn and grow together" with a commitment to high achievement and raising the standards of all. We are looking for an amazing person to lead our growing breakfast club, supervise making and eating breakfast, and organise activities for the children until registration time at 8.40am

If you are interested in this position please visit the vacancy page on the school website <https://www.greathorwood.bucks.sch.uk/vacancies/> or email the school office office@greatHorwoodschoo.org and we will be in contact with you.

GREAT HORWOOD AND SINGLEBOROUGH WI


We have been travelling further afield on our weekly walks and now enjoy some fine coffee stops en route.

All of us thoroughly enjoyed a delicious afternoon tea at Horwood House to celebrate 70+1 years of our WI branch. It was a beautiful afternoon, and we all enjoyed a stroll around the grounds afterwards. It was lovely for us all to meet together again and celebrate the WI's centenary at the same time.


Our September meeting is going to be held in the Village Hall for the first time in a long while and the speaker is Milton Keynes Poet Laureate who should be very entertaining.

You are very welcome to join us so if you would like to come along please contact Angela Mayne. angela.mayne@googlegmail.com or on 715400.

****RELAUNCH****




WHERE FITNESS AND FUN
Come to Party!



In Person and Online Classes
Full Schedule and Information
www.jazzercisebbh.com

To book your spot, contact Keri
07900 987230 jazzercise1@hotmail.co.uk

**Do more.
Learn more.
Be more.**




Put your skills to use, learn new ones, and contribute to an amazing life-experience for you and your local community.

Volunteering is easier than you think. With full support and training, you can volunteer on a flexible basis.

Put your skills to use, learn new ones, and contribute to an amazing life-experience for you and your local community.

Volunteering is easier than you think. With full support and training, you can volunteer on a flexible basis.

scouts.org.uk/join
#SkillsForLife



Scouts
1st Great Horwood Scout Group

Copyright: 2018 The Scout Association Registered Charity numbers 306101/SC038437

Local
Musical Theatre
Classes



Be a star on stage and in life

BOOK A TRIAL CLASS TODAY AT
PWACADEMY.COM

07568 447 131 | 01296 733 258 | admin@pwacademy.com

Peplow Williams
Academy of Theatre and Performing Arts

for ages **4 - 11**

GARDENING TIMES

At this time of year there is an abundance of produce that we are dragging from the garden or allotment to the kitchen. It can feel as though you are getting mugged by the number of courgettes and climbing beans that keep on coming at a frenetic pace (and gardening, if done correctly, should rarely be described as frenetic). This time can be seen as both a blessing and a curse.

Some things can be counted on, whilst others require a little more effort but that means when they do come, they are really special. Figs fall into this category. In good years they give us an abundance but in years such as this we may just have to put up with looking at their gorgeousness and little else. Culturally, they are up there with the best of them. In the Bible figs are the very first tree that are named with a common name way back at the beginning in the Book of Genesis, beaten only by the Tree of Life and the Tree of the Knowledge of Good and Evil and medieval artists depict Ad-am and Eve as clothing themselves in the leaves to hide their modesty. It was the tree that Zac-chaeus climbed so that he could get a better view of Jesus as he travelled past, and scripture has references to this beautiful tree sprinkled generously around.

Here in Buckinghamshire, they want to be grown next to a sun-soaked wall that drinks up the rays and warms the fruit, you get more fruit that way, in both quantity and quality. They do seem to benefit from having their roots restricted whether this is on a pot or in a brick-lined trench, although if you are going to do this don't brick up the bottom, the soil needs to be free draining. Root restriction causes the tree to produce fruit early because of the stress. This has the benefit of limiting size, they can be a bit bolshy.

The village of North Marston, which in the past was a major pilgrimage destination equalling any other that Britain has to offer, used to call Palm Sunday "Fig Sunday" and the fruit would be eaten then because of a passage in the Gospel of Mark "Seeing in

the distance a fig tree in leaf he went to see whether perhaps he would find anything on it. When he came to it, he found nothing but leaves, for it was not the season for figs" (Mk 11: 13).

It looks as though North Marston would have the most regular church goers in the country at Easter!

Jobs to do in the garden in September

You can sow hardy annuals just now when the ground is still warm to give them a head start.

Things like Calendula, cornflower, larkspur and my personal favourite Scabious can be sown where you want them and then thinned out later.

Now is the time to be planting daffodil bulbs for that very same reason and you will be rewarded in the spring for your efforts, get them by your front door, you'll thank me for it.

Divide any herbaceous perennials that are needing it, don't use a spade if possible, try and use 2 garden forks, it causes them much less stress.

If leaves start to fall on your lawn, chop them up with a lawn mower before composting, it keeps air in the heap and they will break down much faster. The addition of high nitrogen grass clippings will help to get your heap cooking.

Reverend Mark





Arthur's

small tree work & hedge
trimming services

07342 181713

arthursgardenservices@gmail.com

Qualified arborist
Public Liability Insured

The Lavender Workout: for mind and body.

Stretch, strengthen, tone and relax with exercises derived
from Fitness Yoga, Tai Chi and Pilates.

Returning and new exercisers
of all ages and fitness levels welcome.

Great Horwood Village Hall
Thursdays 10.00 am - 11.00 am

Re-starting 5/8/21

4 weeks through August £34

Pre booking essential. Limited spaces.
Following all current Covid-19 guidelines.

Please contact Sandra Pratt AFAA, AFOGB, Fitpro.

07775 428594

Email: sandrapratt45@yahoo.co.uk



Established 1990

Your Local
Window and Conservatory
Specialists
Products made to suit in
UPVC

From Design thru' to completion ...

01296 712151

Email: NandGwindows@aol.com

FENSA Registered



MOORESPARKS
ELECTRICAL



07708 531 227 / 01296 708 683



mooresparks@hotmail.com



www.facebook.com/mooresparkselectrical



@mooresparkselectrical

- FREE QUOTATIONS
- DOMESTIC & COMMERCIAL
- LIGHTING & POWER
- FAULT FINDING
- REWIRES
- CONSUMER UNITS
- TESTING, INSPECTION & CERTIFICATION





MEN IN SHEDS

A friendly workshop where men can gather, work together, share skills and knowledge or just have a chat over coffee.

August has provided a sense of normality returning and a welcome reminder that our Shed is primarily a social space. There's always plenty of making and mending to be done but popping in for tea and a chat is just as important. Also welcome is the return of 'customers' calling to ask about something bespoke for their garden, a bit of welding they need doing or some tools they need sharpening. As our freedoms start to return, making sustainable choices has never been more important - so how we can enjoy these renewed opportunities without further damage to our fragile planet?

A recent job here neatly illustrates some of the decisions and dilemmas we face.

An armful of garden tools in need of TLC were dropped-off recently and these included a hoe and various garden shears.

The hoe appeared to be a hefty item worthy of the blacksmith's forge but the look was purely cosmetic and achieved by a thick plastic coating that was now stopping the hoe from working or from being sharpened.

Similar dastardly (?) tricks had been used on the shears. What to do? Removing the plastic was tedious but it did allow repairs to go ahead but if time and effort were factored-in then replacement would be the sensible option - but is this sustainable?

It would be all too easy to grumble about 'shoddy goods' but I'm not sure things are that simple. The fact remains that both the hoe and the shears worked beautifully when new, were easily affordable and had already earned their keep for quite a while.

Luckily, we don't have to be quite so analytical at the Shed but it's always good to have a topic for discussion when supping tea and getting satisfaction from mending stuff that was designed not to be mended!

We look forward to seeing you at our AGM on Tuesday September 7th at 2:00 p.m.

The Shed is open every Tuesday and Thursday from 10:00 -4:00 at Unit 4, Station Road Ind. Estate.

www.MenInShedsWinslow.org.uk

Or for more info call Dave Saunders;

01296 714164

Focus is delivered

FREE OF CHARGE

to every home

in Great Horwood

and Singleborough.

To send your news or to

advertise in Focus,

please email editor@ghfocus.com.

GREAT HORWOOD VILLAGE HALL

We are pleased to see a few more enquiries for future bookings now that the re-strictions are easing.

Our 2 yoga and Pilates classes are proving popular, and we hope to welcome back the W I and silver Band in the near future.

The popular lending library at the back of the hall is now open again during the weekly Post Office session on Wednesdays.

It would be good to see the return of refreshments on Wednesdays and I am wondering if anyone in the village would be willing to restart this popular service?

Thanks to the Committee members for continuing to ensure that we operate in a safe and legal manner and for all their hard work.

Ian Lamberton

01296 715968

A very special thank you to Ian who enabled the Post Office to run early this year by ensuring Covid regulations were met - well done Ian

HOLLAND ENGINEERING SERVICES



MOT TEST STATION
Motorcycle servicing & repairs
Quads & Lawnmowers
Parts and tyres
Mig/Tig Welding

Salden Crabtree Farm
Whaddon Road MURSLEY Milton Keynes MK17 0PR
Tel: 01296 728693
Mobile: 07879 427205

Piano Lessons

PIANO TEACHER

Why not expand your mind and interest in music with a fully qualified teacher of over 30 years experience teaching youngsters and adults for fun and exams.

Call: Geraldine 07890 268387
email: gerryrb@btinternet.com



MICK WOOD

Heating Services Ltd

SERVICE, REPAIR & INSTALL OIL FIRED BOILERS

We are Grant G1 & Worcester AI approved boiler installers who are able to offer longer warranties at no extra cost to you.

All installations are to Oftecregulations.

OIL FIRED COOKERS (Service & breakdown only)

- * Prompt personal attention
- * Oil tank gauges fitted
- * Power flushes



Registered
Technician

Tel: 01296 730 670
Mobile: 07979 645 472



**Medical
Detection Dogs**

Patron: HRH The Duchess of Cornwall

DOGS DAY OUT 2021 SET TO GET TAILS WAGGING

The popular Medical Detection Dogs fundraising event is back

We're not the only ones who need a good day out after the last few months - our dogs need some fun too so why not come along to the canine extravaganza that is *Dogs Day Out*?

Join staff and volunteers from the charity Medical Detection Dogs on Sunday 5th September in Swanbourne, Buckinghamshire, for a great day out with plenty for visitors with four and two legs.

For the canine visitors, there are gun dog scurry events to compete in, a companion Dog Show with prizes and a variety of have-a-go events such as an agility course.

For us humans, as well as the competitions and activities, there will be some great shopping opportunities with stalls offering dog products, a tombola, a raffle and much more.

When you get peckish, there will be plenty of local fare including a BBQ, fish and chips, vegan delights and ice cream, as well as the all-important tea tent and beer stall.

Gates open at 10.30am and the event concludes with prize giving at 3.30pm. Entry is just £2 per adult (Under 16s are free but must be accompanied by an adult). There is plenty of parking available.

Dogs Day Out is a fundraising event for Medical Detection Dogs with all proceeds going to the training of dogs to save lives using their amazing sense of smell.

The charity trains Bio Detection Dogs in its training room near Great Horwood to detect diseases such as cancers, Parkinson's and COVID-19 and Medical Alert Assistance Dogs to alert individuals with complex health conditions such as PoTS and Type 1 diabetes, when they are about to have a medical emergency.

For more information:

www.medicaldetectiondogs.org.uk

Keep up to date with exciting new additions to the programme on Facebook: Medical Detection Dogs and Twitter: @MedDetectDogs

WINSLOW & DISTRICT ART SOCIETY

Our weekly meetings continue to be held in Winslow every Thursday morning and Padbury every Tuesday morning. Anyone over age 16 with an interest in visual arts is eligible to become a member subject to a small subscription. We are a friendly and helpful group and anyone who is interested in becoming a member can find more details on our web-site www.winslowart.org.uk

Demonstrations in a range of media are normally held on the last Thursday of each month and will restart in the Winslow Bowls Club from Thursday 30 September. Entry is from 7.00 pm for a 7.30 start. Details are:

30 September

Laura Boswell Japanese woodblock.

28 October

Sarah Janavicious Mixed media textural collage.

18 November

Mark Fennell Media, oils, portrait.

These are enjoyable and informative evenings and last about two hours with a break for tea and biscuits. Non-members are welcome to attend, and entry will cost £5.00

Plans continue for our November exhibition which will be staged in our local Public Hall. This is held over a weekend and gives the opportunity for the public to look at and purchase work done by our members. Admission is free. Consideration is being given to our own Facebook facility and further information will be given when it is available.

If you are interested in more information, please look at our web-site www.winslowart.org.uk or contact:

Chair: Maureen Barnes 01280 815691

Secretary: John Beckerleg 01280 816932

Treasurer: Jackie Chambers 01296 713607

Trevor Evans

'Your Personal IT Man'

PC Support, Secure Wireless Broadband and Home Networks,
Anti-Virus and Anti-Spyware Support

I can help you solve your IT problems and requirements

A Friendly and Professional Service

Call or Email me for a No-obligation Chat

☎ 01296-714413

✉ trevor@trevorevans.me.uk



Great Horwood
Parish Council

GREAT HORWOOD PARISH COUNCIL

Useful contact details

Members of the Parish Council :

Please note that councillors now have a dedicated Parish Council email address. This is in order to comply with new Data Protection Regulations that came into force in 2018. It is good policy to keep council emails separate from private emails.

John Gilbey Chairman 01296 711915
johnwgilbeypc@gmail.com

Caroline Cousin Vice Chairman 01296 713548
carolinecousinghpc@gmail.com

Robert Davies 01296 712763
robert7_daviesghpc@yahoo.com 07967 868881

Dave Taylor 07980 546484
daveghpc@btinternet.com

Angela Mayne 01296 715400
angelamayneghpc@outlook.com

Jackie Goss 01296 713135
jackiegossghpc@gmail.com

Gavin Laird 01296 712798
Gavinlaird78ghpc@gmail.com

Clerk to the Council

Mrs Sue Brazier 01296 714712
clerk@greathorwoodpc.org.uk

Parish Council Website www.e-voice.org.uk/ghpc/

Great Horwood Village Hall Bookings 01296 715968

Doctors Car Service 07704 140110

Winslow and District Community Bus 01296 715786

Aylesbury Vale Dial-a-Ride 01296 330088

Community Police Officers

PCSO Andy Piotrowski Tel: 101

WinslowandDistrictNHPT@thamesvalley.pnn.police.uk



CLINICAL PILATES CLASSES

Padbury Village hall

MATWORK

Wed @ 9.30am

OLDER ADULT

Wed @ 10.45am

Thurs @ 9.30am

CHAIR BASED

Thurs @ 10.45am

Ruth Reid APPI

07736 438443

info@rlr-therapy.com

www.rlr-therapy.com

FaceBook RLR Therapy @rlrtherapy



Great Horwood CE School

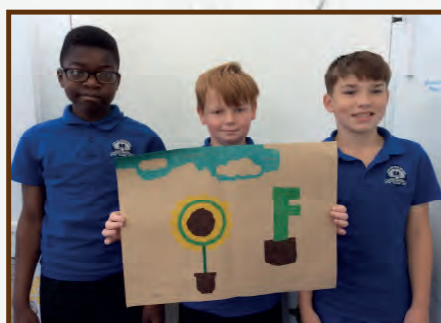
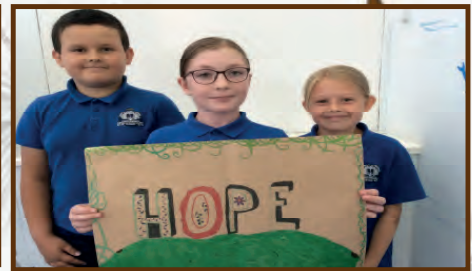
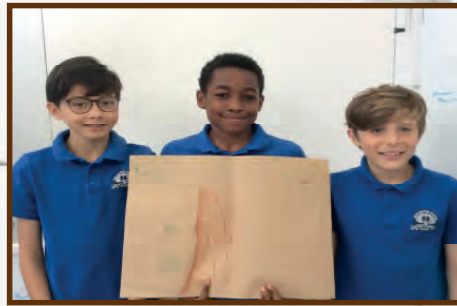
In September we will launch our project:

'Seeds of Hope' - Garden of Tranquility

Named by the children in Hawthorns Class

We will be raising

funds to enhance our



PARISH PUMP



Great Horwood
Parish Council

RESURFACING VILLAGE ROADS

We are all frustrated about the state of our village roads. As I am writing this page, the side roads off Little Horwood Road and the length of Spring Lane have received a treatment called micro surfacing, causing disruption to parking as the dates for works were moved and moved again. Cllr Gilbey made a complaint to Martin Tett, Leader of Buckinghamshire Council stating that the roads in need of attention were in fact Little Horwood Road and the High Street, not the village side roads.

The response stated that *'part of the roads budget is allocated to local road repairs and part to repairs on our busier roads. The High Street is a busier road and needs to be assessed against other competing priorities on our strategic network. We have a large backlog of roads in need of repair across the county and it is not always possible to repair every road as soon as we would like'*.

Although not mentioned in the response, we assume Little Horwood Road would be classified as a 'busier road'. The Parish Council understands that the repair programme will be reassessed in the Autumn and we will continue to press for these roads to be prioritized.



CREATING A VISION FOR THE OXFORD - CAMBRIDGE ARC



People across the Oxford - Cambridge Arc, and all with an interest in the area, will have the opportunity to contribute to the long-term development of the area, as part of a government consultation.

A new plan aims to enhance the infrastructure, environment and new developments in the counties of Oxfordshire, Buckinghamshire, Northamptonshire, Bedfordshire and Cambridgeshire.

The link to this consultation can be found at <https://www.gov.uk/government/consultations/creating-a-vision-for-the-oxford-cambridge-arc>

SPEED INDICATOR DEVICE

We are all aware of speeding traffic entering our village. The Parish Council do have a handheld device that will record speeding cars but it does need a team of volunteers to man it. Due to Government guidelines over the past year, we were not permitted to use it so now is the perfect time to be trained up and be a visible presence. A short training session will be required, but nothing onerous. Please contact me if you would be interested in getting involved.



FUNDS FOR LOCAL CAUSES



As in previous years, Great Horwood Parish Council will once again be donating up to £3000 to local causes. If you would like your group to be considered, you need to start thinking about your bid. Forms can be obtained from the Parish Clerk, contact details below. Applicants must be from organisations associated with the village. Winning bids will be announced at the December Parish Council meeting. The closing date for applications is **31st October 2021**.

WELCOME TO GREAT HORWOOD



A big welcome to our new residents! There have been many people moving in and out recently. We hope you are settling in and enjoying our lovely village community. Would you like to receive a Welcome Pack? This has recently been updated and includes information on village organisations, the School, Pub, Church and the local area. Please contact John Gilbey by email on johnwgilbeypc@gmail.com

The date of the next meeting is **Monday 6th September at 7.30pm** in the Village Hall. Due to the easing of restrictions, Parish Council meetings are once again being held in the Village Hall. If you would like to attend meetings, please could you let me know in advance as space is limited. Minutes of meetings can be found on the noticeboard and the Parish Council website e-voice.org.uk/ghpc/

Sue Brazier, Parish Clerk Great Horwood
clerk@greathorwoodpc.org.uk



Winslow Community Bus

www.winslowbus.com

wdcbenquiries@btconnect.com

Tel: 01296 715786

Scheduled Service Update

We are now running our Wednesday Winslow Market Service, and Friday & Saturday Aylesbury Market Service.

Despite the government lifting restrictions, we still have the following guidelines in place to help keep yourselves and our drivers safe:

- We have removed some seats to continue to maintain social distancing, so we are only able to transport 8 passengers at any one time. Due to the limited seats, it is essential that you pre-book your place with the WDCB Coordinator prior to travel.
- We ask that all passengers wear a face covering while travelling on the bus.
- We also ask that all passengers use the hand sanitiser provided on the bus.

Please contact the WDCB Coordinator for more details.

Winslow & District Community Bus need Volunteer Drivers!

The Winslow & District Community Bus relies on volunteer drivers to run all our services, excursions and hires.

We are always in need of volunteer drivers, especially at the moment! So, if you are aged between 30 and 70 years of age, have a D1 on your licence, and have some spare time, please consider becoming a driver for your local Community Bus.

You can do as much or as little as you like, from our shorter local runs to some of our longer day trips. We visit all kinds of places, including garden centres, stately homes, shopping centres, countryside drives as well as our regular scheduled bus services, and the people who use the bus are a very friendly crowd!

We offer certificated training to MIDAS standard, and pay out-of-pocket expenses.

Please call or visit our website for more information.

SCHEDULED WEEKLY SHOPPING ROUTES:

Every Friday & Saturday morning - Aylesbury Market Bus

Stops at:	Outward	return
*Spring Lane, Great Horwood	09.25	13.05
St James Church, Great Horwood	09.30	13.00

*Stops on request

Every Wednesday morning - Winslow Market Service

Stops at:	Outward	return
St James Church, Great Horwood	10.10	11.51

Call for more information on times, or visit our website!

www.winslowbus.com

GREAT HORWOOD GIRLGUIDING

Great Horwood Guides, Brownies and Rainbows were delighted to welcome some new members during the summer term as we restarted face-to-face sessions

Meeting outdoors, we enjoyed a host of different activities from den-building in College Wood, to trails around the village, several new games and outdoor cooking - mostly in the pouring rain!

We're looking forward to plenty more fun as the new term starts, as well as the option to meet indoors as the nights draw in.

We still have spaces in all three sections so we really hope more girls will come and join us.

We meet on Monday evenings during term time in the Scout & Guide HQ in the grounds of Great Horwood School.

Our groups are:

Rainbows for girls aged 5-7

Brownies for girls aged 7-10

Guides for girls aged 10-14+

If you have a daughter who would like to join Girlguiding, please register her details at

<https://www.girlguiding.org.uk/information-for-parents/register-your-daughter/>

There are also leadership opportunities for girls and women aged 14+ and we welcome female & male adult volunteers. If you're interested in volunteering, please register yourself at

<https://www.girlguiding.org.uk/get-involved/become-a-volunteer/>

If you'd like to find out more about what we have to offer before registering your daughter or yourself, I'd love to hear from you. Please contact me on 01296 712034, 07501 636037 or at claremartin71@btinternet.com

Clare Martin (Leader, Great Horwood Guides, Brownies & Rainbows)

YOUR LOCAL SCOUTING & GUIDING NEED YOU

Are you looking to add to your CV? Want to be part of village life? Help Young People develop Skills for Life?

Then why not look at volunteering with either the Scouting or Guiding Groups in Great Horwood.

Both are in need of Adults (18+) to help in all sections: As numbers of Young People have increased

If you would like to find out more information, then contact

Yvonne Taylor MInstLM - Group Scout Leader

1st Great Horwood Scout Group

adcbandc@uwclub.net or 07931 585926



CAKE STALL

SATURDAY 4th SEPTEMBER

IN CHURCH PORCH

10am



IN AID OF ST JAMES' CHURCH ROOF APPEAL

CONTRIBUTIONS GRATEFULLY ACCEPTED TO:

LINDSAY DUNHAM, WIGWELL, SPRING LANE, Tel 712521

MARGARET MOORE, 8 HIGH STREET, Tel 713281



THE PLUMBER

Apprenticeship Served 1972 - 78

City and Guild Qualified

ON CALL EVERYDAY

Domestic and Commercial Installations,
Maintenance and Repair Service.

- 💧 Burst/Leaking Pipes
- 💧 Blocked Sinks/Toilets
- 💧 Hot Water Tanks
- 💧 Overflows
- 💧 Showers
- 💧 Radiators and Pumps
- 💧 Garden Taps/Water Butts
- 💧 Fault Finding
- 💧 FREE WRITTEN QUOTE

Call The Plumber Anytime

07970 317843

theplumber@email.com

1st aid for your plumbing



Claydon Auctioneers

Auctioneers of:

Antiques, Collectables, Silver,
Jewellery, Watches, Paintings & Prints,
Furniture, Clocks, Militaria,
Sporting Goods & Memorabilia,
General Goods & Chattels, etc.

Free auction valuations available,
Partial & total house clearance service,
Insurance, probate & family
division valuations

Auctioneer: Louise Gastelow

Contact:

01296 714434

info@claydonauctioneers.com

www.claydonauctioneers.com

Claydon Auctioneers Ltd.
The Claydon Saleroom,
Calvert Road, Middle Claydon,
Buckinghamshire, MK18 2EZ



THE CUTTING CORNER

Est 1998

Traditional Barber Shops



NEW LARGER SHOP NOW OPEN

WINSLOW

Opening times:
Tues, Weds & Fri 9am-6pm
Thurs 9am-7pm
Sat 8.30am-5pm

2a High Street
Winslow
Buckinghamshire
Tel: 01296 715240

BLETCHLEY

Look online for opening hours.
140 Buckingham Rd
Bletchley, Milton Keynes
Tel: 01908 375987

Appointments available
Thursdays, Fridays and Saturdays at
74 High Street, Winslow.
Book online via our
website



www.cutting-corner.co.uk

FREE PARKING! Find us on Facebook



RK Plumbing and Heating

- Bathroom Installation
- Central Heating Systems
- All Plumbing Work Undertaken
- Landlord Gas Safety Certificate
- Breakdown and Repairs

FOR A JOB WELL DONE

To get a free quote
Call Rick on 07720 265645
 or
email: rick@rkplumbing.net
www.rkplumbing.net



Reg. No. 191568

Shaun Guard TV & WIFI SERVICES

- Aerials - repaired & supplied and poor reception solved
- Satellite - Sky Q dish upgrades, discreet dish installation
- Internet - blackspots cured, data cables to your TVs
- TVs - hung on your wall or set up and tuned
- CCTV & Door Entry - domestic installations

OXFORD AERIALS
www.oxfordaerials.co.uk
**Call Bicester
01869 879111**



THE IRON LADY IRONING SERVICE 01908 504080

(Mobiles: 07733 120741 & 07713 215362)

Do you REALLY DISLIKE LAUNDRY & IRONING?
If so, we have a service to suit you.

A weeks washing? just a few shirts? or is it the entire package; washing, drying and ironing? You're not alone... At The Iron Lady we offer a service thats daily, weekly, fortnightly, monthly or even just when it gets too much!

Make your life simpler & call us. Fast, friendly and reliable.

Washing and/or Drying Service

Ironing Service

Pick up or delivered to your door

Drop off's
Welcome

Mon-Thurs 8am-1pm

e: tandldec@aol.com



Unit 2 • Bacon House Farm • Warren Road • Little Horwood • Milton Keynes • MK17 0PS

ExemplaCare

Exceptional carers & nurses at home

We offer the very best personalised care and support in the comfort of your own home.

We serve Buckingham, Winslow, Brackley & the surrounding villages.

- Personal Care
- Nursing Care

- Home Help
- Complex Care

☎ 01280 821860

✉ contact@exemplacare.co.uk

🌐 www.exemplacare.co.uk

Serving our local community & employing local staff.

Chartered Accountants and Business Advisers

For all your accountancy needs

Bookkeeping services	Accounts preparation
Corporation Tax	VAT Returns & services
PAYE Returns & services	Company formation
Company secretarial work	Tax planning advice
Self-Assessment	Tax Return preparation

**The Barn, 11a Queen Catherine Road,
Steeple Claydon, Bucks MK18 2PZ**

Contact us for a free consultation

Tel: 01296 738668 01296 826177

Mob: 07812 026346

Email: office@ajrandco.co.uk



Chartered
Accountant
& Business
Adviser

**AJR
&Co**



Buckingham Wills & Probate

Part of Bicester Wills Ltd

Home visits
no extra
charge!!

- Standard Single Will - **£199**
- Standard Mirror Wills - **£299**
- Lasting Power of Attorney
Property & Financial or
Health & Welfare - **£325 each**
Both types for one person - **£500**
Both types for a couple - **£950**
- Probate Assistance from - **£1,200**
- Prepaid Funerals Plans - from **£1,700**

Gail and Lesley offer a friendly
estate planning service



Come in and see us
The Garage, Castle Street,
Buckingham, MK18 1BS
or phone 01280 811201



lesley@buckinghamwillsandprobate.co.uk

01280 811201

www.buckinghamwillsandprobate.co.uk

What's my house worth in Great Horwood?

If you want to know, get in touch with Ella Homes and Alexander & Co for your free, no obligation valuation.

We're working in partnership to cover more of your local area.

Aylesbury: 01296 710200

Bicester: 01869 324711

Buckingham: 01280 817400

Winslow: 01296 715386

ella

in partnership with

www.ella.co.uk

**A
&C**

ALEXANDER & CO

www.alexanderandco.co.uk

Window Cleaning

AND GUTTER CLEARING

WINDOWS CLEANED REGULARLY,
ONCE EVERY 2 MONTHS,
INCLUDING ALL FRAMES AND DOORS
FOR NO EXTRA COST.

CONTACT CARL ON

07979 395 101

or

countryhousecleaning100@gmail.com

FOR A FREE QUOTE.

also PRESSURE WASHING
OF PATIOS AND DRIVEWAYS

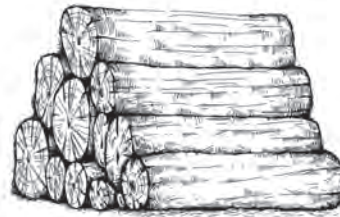
Jason's Logs

Good quality logs delivered
in full and half loads.

Garden clearance,
Tree management
Pruning services

Based at Edgecott

Tel 07961 538035

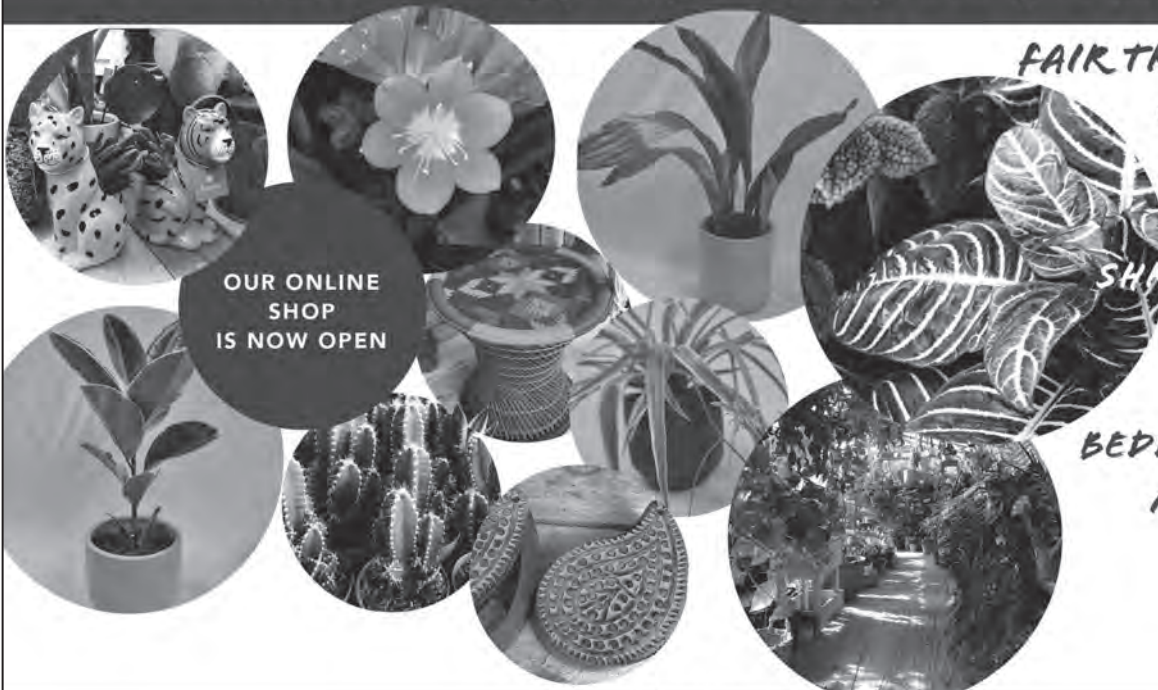


OPENING HOURS
Please check our website for up to
date opening hours



TWIGS NURSERIES
Windy Ridge, Thornborough, Buckingham.
MK18 2DZ
twignurseries@gmail.com

INDOOR PLANTS AND POTS



OUR ONLINE
SHOP
IS NOW OPEN

- FAIR TRADE GIFTS & ORNAMENTS
- PERENNIALS
- SUCCULENTS
- SHRUBS & TREES
- POTS
- COMPOST
- BEDDING PLANTS
- METAL WORK
- TOOLS
- ROSES

www.twignurseries.com
order online now with free local delivery

D. Johnston

Heating & Plumbing Solutions

Boiler installations / servicing / repairs

Oftec registered oil boiler specialist

Gas safe registered

Landlord Safety Certificate

Full Central heating Installations

Under Floor Heating

General Plumbing

Power flushing

Pressurised hot water systems

Bathroom installations



www.d.johnstonhps.co.uk

Email: djohnstonhps@outlook.com

Tel: 01296 655169 / Mob: 07702 036217

Precise PVC-u Building Supplies Ltd

Suppliers of Building Plastics

Precise PVC-u Building Supplies Ltd is a family run company based in Bletchley, Milton Keynes. We are established since 2003 and pride ourselves on our friendly and informed customer service.

Our experience in the trade ensures that we supply the best quality PVC products to all our customers. We guarantee next day delivery on all of our stocked items. We are a supplier of a wide range of plastic building products. Many of our customers use our services like a manufacturers and suppliers as we can order any product that is currently not in stock.

We are suppliers for window fitters, builders, plumbers and DIY enthusiasts. Whether you're an individual who likes home improvements or a professional window fitter we are able to supply you with all the necessary materials. Come down to the industrial estate and see how we can save you and your company money on all your PVC supplies.

Some of our specialist PVC-u products include:

- Fascias, soffits and guttering fixtures and fittings
- Window sills
- Skirting boards
- Draining pipes
- Door panels and accessories including cat flaps and letter boxes
- Lead Roofing
- Polycarbonate for lean two's and conservatories
- Underground drainage
- Trims, pins, nails, tools bagged sand and cement
- Silicone, solvents and adhesives



FREE
next day delivery
to the local area
on stocked items
on orders over
£50



MK ONE Business Centre
Unit B, 12a Romar Court, Bletchley, MILTON KEYNES MK1 1RH
t: 01908 270 994 e: sales@preciseupvc.co.uk

Editor: David Brazier editor@ghfocus.com
Typing & Layout: David Brazier, Andy Gibbs.
Printing: Harlequin Press Ltd.
Copy deadline: 15th of month before publication.

Distribution: June Margerrison, Ann Biggins, Edwina Daymond, Louise Edwards, John Gilbey, Valerie Hancock, Duncan Hogston, Cathy Holland, Ian Lamberton, Gary Lee, Angela Mayne, Gill Wood, Kathy Thompson, Sylvia Whitehall.

Available online at: www.e-voice.org.uk/ghpc

Great Horwood School Parent, Teacher, Friends Association (PTFA)

Pre-loved sale

23rd September 2021

3.30 pm



If you would like a stall at the GHS PTFA Pre-Loved Sale please contact greathorwoodpta@gmail.com

£10 for a single stall or £15 for a double stall.

Please ensure you provide your own table if required.

Parentkind
Member Association