

**NOVEMBER
2022**



**A Service to
Celebrate our New Roof
Sunday 20th November**

11am

St James Church

**A service to thank the whole
community for their support in this project**

All Welcome



**Advertising and copy deadline for next issue : 15th November 2022.
To advertise or submit articles email: editor@ghfocus.com**



Established 1990

**Your Local
Window and Conservatory
Specialists
Products made to suit in
UPVC**

From Design thru' to completion ...

01296 712151

Email: NandGwindows@aol.com

FENSA Registered

**Focus is delivered free of charge
to every home in
Great Horwood and Singleborough.
To send your news or advertise in Focus,
please email editor@ghfocus.com.**

We appreciate the continued support of our advertisers that enable us to deliver Focus to every home in Great Horwood and Singleborough free of charge 10 times a year. Acceptance and publication of an advert does not imply endorsement or approval by Focus of the company, service or products offered.

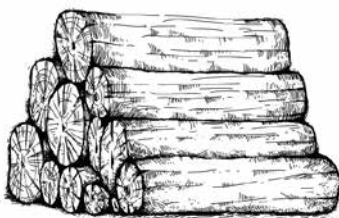
Jason's Logs

**Good quality logs delivered
in full and half loads.**

**Garden clearance,
Tree management
Pruning services**

Based at Edgecott

Tel 07961 538035





WHERE FITNESS AND FUN

Come to party





**Special Offers
Available to
New Customers**




✉ jazzercise1@hotmail.co.uk
 ☎ Call Keri on 07900 987230
 📱 @JazzerciseBucksBedsHerts



Church Times

Church Wardens:

David Brazier 714712 and June Margerrison 714554
www.winslowbenefice.org.uk

St James' Services for November

6th	11.00am	Holy Communion
13th	10.30am	Remembrance Service
20th	11.00am	Roof Celebration Service
27th	11.00am	Holy Communion

December

4th Dec	11.00am	Holy Communion
---------	---------	----------------

Church Key:

November - Denise Davies - 712763

December - David Moore 713281

Sidesmen

D Brazier
P Moyles
I Lamberton
J Margerrison

Readers

S Brazier
S Bayliss
I Lamberton
R Margerrison

Intercessions

D Brazier
-
J Brigden
J Margerrison

PCC TREASURER

St James Church PCC are in need of a new Treasurer. If you think you might be able to help, please contact me to discuss further.

David Brazier - 07773 340916 or
davidbrazier14@tiscali.co.uk

REMEMBRANCE SUNDAY

This service will start at the earlier time of 10.30am at St James' Church. We will process outside for the Act of Remembrance at the War Memorial in the High Street just before 11.00am. All welcome.

A SERVICE TO CELEBRATE OUR NEW ROOF

I'm sure you will have seen the recent scaffolding at St James' as the new church roof was being installed. We are pleased to announce that the work has been completed and St James' is now open as usual. We are holding a service of celebration giving thanks to all who were involved in the restoration of the roof. Please join us for this all-age service after which tea or coffee and cake will be served. Sunday 20th November 11.00am - ALL WELCOME

MACMILLAN COFFEE MORNING FRIDAY 30TH SEPTEMBER

We would like to thank everyone for participating and attending MacMillan Coffee Morning held in the village hall on Friday 30th September. It was so well attended thank you all. The biggest thank you to all the volunteers without you we could not have done it. Also a big thank you to everyone at the Arts and Crafts group for allowing us to share the hall.

We all raised £578.60 which is the best ever. Looking forward to next year.

Georgina and Colin Pacitti

REMEMBRANCE SUNDAY ROAD CLOSURE

As in previous years, St James' has been given temporary road closure on Sunday 13th November 2022. This is for a wreath laying ceremony during the Remembrance Service at St James's Church, Great Horwood.

The road closure will be in force between 10:45am and 11:15am.

The road in question is as always, between the old Swan Public House/Pilch Lane and the corner of Nash Road/Little Horwood Road.

Please could you try to avoid using your motor vehicles in this area at this time, as a mark of respect, as well as for the safety of the congregation of St James'.

Many thanks

C. Finnemore, Secretary St James' PCC

COFFEE MORNING FRIDAY 18TH NOVEMBER

Helen and family would like to invite you to a Coffee Morning 9.30am onwards in aid of the Buigiri School for the Blind, Dodoma, Tanzania, on Friday 18th November at The Maltings, Grainge Chase, Little Horwood Rd, Great Horwood. MK17 0QE.

Greetings cards and 2023 Calendars and will be on sale as well, depicting various scenes from the school.

There will also be a cake stall.

Please do support this fantastic cause, we look forward to seeing you.....Thank you.

Please note there is no parking available on Grainge Chase so please park on the Green or on Little Horwood Rd, thank you.

Remember there is no Focus in January.

January events need to be advertised in December issue, out around 1st December.

Copy and advertising deadline for next issue of Focus - 15 November.

editor@ghfocus.com

HomeGym Equipment available for hire



- Treadmills
- Cross Trainers
- Bikes
- Rowing Machines
- and much more




Refer a friend for a weeks **FREE HIRE**

Call 0800 043 2148
 enquiries@homegymuk.com
 www.homegymuk.com

MICK WOOD

Heating Services Ltd

SERVICE, REPAIR & INSTALL
OIL FIRED BOILERS

We are Grant G1 & Worcester AI approved boiler installers who are able to offer longer warranties at no extra cost to you.

All installations are to Oftec regulations.

OIL FIRED COOKERS
 (Service & breakdown only)

- * Prompt personal attention
- * Oil tank gauges fitted
- * Power flushes



Registered Technician

Tel: 01296 730 670
Mobile: 07979 645 472



OPENING HOURS
 Please check our website for up to date opening hours
www.twignurseries.com



TWIGS NURSERIES
 Windy Ridge, Thornborough, Buckingham, MK18 2DZ
twignurseries@gmail.com



HOT CHOCOLATE & SPECIALTY COFFEE

WINTER BEDDING PLANTS

HAND MADE FRESH HOLLY WREATHS

PREMIUM NON-DROP CHRISTMAS TREES FROM END OF NOVEMBER

Landscaping and garden maintenance services now available



HOUSE PLANTS & EXOTICS

PERENNIAL PLANTS & HERBS

POTS & ORNAMENTS

SPECIALTY COFFEE, TEA, ICE CREAM, HOT CHOCOLATE, CAKE

FAIRTRADE GIFTS AND ORNAMENTS

SHRUBS, ROSES & TREES

GARDENING TIMES

This month has to be one of my favourite times of the year. Every year, in the months of September and October I go into some sort of denial, convincing myself that we might, at last, be entering into late summer. But when November comes along there is no hiding from the fact that time is marching on relentlessly and we are fast approaching a new year. At the beginning of the month pets all over the country cower as we celebrate the foiling of the gunpowder plot and then we move ever forwards, thinking that all of our work is done towards the end of the year. (In the church our year starts with Advent, at the beginning of December.)

But before we go there, we need to pause because we are not done with November yet!

It is a month of incredible, transient beauty. We start the month with the final, fiery trees aflame with colour, so much so that Native Americans built up stories around autumn colour, telling tales of how these trees gave mankind fire from their leaves. Anyone who has seen the New England Autumn colour would immediately understand why they thought this.

Back here in good old Blighty, our gardens have had most of their work done. Lawnmowers are stashed away, the beds lie bare, the fruit has been picked, most plants will have done what it is that they are going to do. They, and us, can take a well-earned rest. But before you wash, oil and hang up your spade before grabbing your slippers, I have to tell you that there are a few exceptions to that rule.

Tulips are wonderfully forgiving to those of us that are slightly tardy in our gardening habits. They can be planted now, well after any of the other bulbs that you can find in your garden. They require absolutely no skill and yet have the ability to make you look as though you are the most gifted of gardeners. They truly are a marvel. In Iran, where they originate from, they are said to have sprung up out of the blood of two star-crossed lovers, (think Romeo and Juliet.....and horticulture) and the tales of Tulip mania from 17th Century Holland are just incredible, where a single bulb was deemed to be more expensive than a townhouse in the centre of Amsterdam. Ironically, the most expensive bulbs with their strange colours were as a result of a virus, that produced extreme beauty in the bulbs but meant that they lacked the vigour to sustain themselves, they burned out rather than faded away. Something that I will try to emulate in my life of ministry.

If I am being honest, what I especially love about them is that they always remind me of the glorious resurrection, when all around are growing dormant, they are quietly working their magic, unseen, hidden. Until the day when they burst forth in a blaze of glory.

Alleluia!

Jobs to do in the Garden in November

- Shop and plant bare root Roses, trees and shrubs. Plants are dormant now and so if you want them, at a fraction of the price if they

came in a pot, now is the time to do it. Get them in while the ground has a bit of heat left and then watch them romp away come spring.

- Once the first frost has arrived, pull up your parsnips, swedes and harvest your Brussel Sprouts, the cold converts some of the starches into sugars, making them that much sweeter, they same is also true if you pick sloes to make jam or gin (I've never met anyone who makes jam from them but lots who make gin). Don't panic and harvest too early.
- Autumn fruiting raspberries can be chopped down to the ground and currant bushes can be thinned out, try to remove a third of each bush, only removing the oldest, thickest stems, it is the younger growth that is the most productive.

GREAT HORWOOD & SINGLEBOROUGH WI

It's been another busy month for Great Horwood & Singleborough WI. Our group recently enjoyed a tranquil canal trip on an electric narrow boat through the waterways of Buckinghamshire with a delicious scones tea, and many said that they would like to repeat the outing next year.

At our October meeting, guest speaker, Sherry Scott MBE, gave a fascinating talk about how she and her late husband Colonel Ray Scott set-up the Burma Forces Welfare Association to provide urgently needed assistance to the surviving soldiers and their families who were living in unimaginable, dire conditions. It was a tale of courage, intrigue and determination involving smuggling, jail and survival under the most challenging circumstances to get the help needed to the forgotten soldiers.

A week later, we enjoyed an outing to Hidcote Manor to see an exhibition featuring the colourful work of artist and textile guru Kaffe Fassett. More events are planned including a workshop in November in the Village Hall teaching decoupage and transforming plant pots into attractive planters - ideal for presents in time for Christmas. Lunch is provided.

The walking group continues to enjoy its weekly rambles around the unspoilt countryside of Buckinghamshire. A different walk is organised each week, usually around four miles, and this month we have been to Stowe, Thornborough, Mursley as well as a circular walk across the fields around Great Horwood to see the WI trees which were planted by a lake to mark the Millennium. We've also started a weekly 'Totters' group - a two mile amble for those who prefer a shorter walk.

Our November meeting will be our AGM. If you would like to attend our AGM or any of our social activities to see if the WI is for you, please contact Ann Biggins annieqqmk@gmail.com / 07961 960802 for more details.

One of the two trees planted by the WI to mark the millennium.





Greenway Dog Walking

DAYCARE AND BOARDING WITHIN THE FAMILY HOME
GROUP OR INDIVIDUAL WALKS, POP-INS
QUALIFIED CANINE 1ST AID AND EMERGENCY CARE
CPD CANINE BODY LANGUAGE
FULLY INSURED AND LICENSED LC-201905 37236
BUCKS CC

FIND US ON FACEBOOK
PLEASE CALL LOUISE FOR ANY ENQUIRIES
07889658215
BASED IN GREAT HORWOOD



CAN YOU HELP?



Great Horwood School PTA are looking for historical and geographic resources and artefacts to help improve the learning experience for the children. For example, maps, coins, medals, fossils or other historical or geographical items.

Any donations would be gratefully received.

Please take donations to Great Horwood School or email greathorwoodpta@gmail.com to arrange collection .

RK Plumbing and Heating

- Bathroom Installation
- Central Heating Systems
- All Plumbing Work Undertaken
- Landlord Gas Safety Certificate
- Breakdown and Repairs

FOR A JOB WELL DONE

To get a free quote
Call Rick on 07720 265645

or

email: rick@rkplumbing.net
www.rkplumbing.net



Window Cleaning

AND GUTTER CLEARING

WINDOWS CLEANED REGULARLY,
ONCE EVERY 2 MONTHS,
INCLUDING ALL FRAMES AND DOORS
FOR NO EXTRA COST.

CONTACT CARL ON

07979 395 101

or

countryhousecleaning100@gmail.com

FOR A FREE QUOTE.

also PRESSURE WASHING
OF PATIOS AND DRIVEWAYS

GREAT HORWOOD SILVER BAND

It has been a while since I have written on behalf of Great Horwood Silver Band and in that time King Charles has become monarch of our country, following the death of his mother Queen Elizabeth. The Band took the decision to postpone again our planned Jubilee celebration on the 18th September as a mark of respect following the Queen's death, but on the same date were very honoured to take part in the National Moment of Reflection that took place on the Village Green. It was a fantastic turnout from the village, and we were very proud to be part of the event.

We have welcomed new and returning members to our Band over the last few months but are still actively seeking new members of any age and ability, so please contact the Band through the details provided below if you are interested in coming along to meet and join us. We rehearse on a Wednesday evening in the Village Hall in Great Horwood.

The Band had an unusually quiet summer of events, but as we enter November, that certainly cannot be said of the next few weeks leading up to Christmas as you can see from the list of events that we are taking part in.

Please come and join us in the Village Hall for our annual Christmas concert, where we will be raising money for Parkinsons UK, a charity that is very close to the Band's heart, as we have a member of the Band who works for this amazing charity, but we also have a member of our Band who has Parkinsons and has received support from the charity.

Friday 11th November

Remembrance Service Preston Bissett Church

Sunday 13th November

Remembrance Day Parade Winslow

Thursday 24th November

Winslow Christmas Fayre Winslow

Saturday 26th November

Buckingham Light Switch On Buckingham

Saturday 3rd December

Tingewick Light Switch On Tingewick

Sunday 4th December

Annual Christmas Concert Great Horwood
Village Hall 3pm

Wednesday 7th December

Carols outside Tesco Buckingham Tesco

Thursday 8th December

Carols at Berryfields Berryfields, Aylesbury

Saturday 10th December

Watermead Carol Concert Watermead, Aylesbury

Friday 16th December

Carols on the Green Little Horwood

Tuesday 20th December

Carols around the tree Adstock

Thursday 22nd December

Slapton village carols Slapton

Saturday 24th December

Carols around the Village Great Horwood

GREAT HORWOOD CRICKET CLUB

The cricket club playing season has now ended after a nice hot summer. Both sides had mixed seasons in the clubs first season in the newly reorganised Cherwell league the 1st team finished 6th in division 4b and the 2nd team struggled in division 6b and finished bottom, but we had many new players who joined the club and enjoyed playing cricket and have said they will return next season.

The ground in Nash Road has had its winter prep done and has been put to bed but the clubhouse (as we have no pub in the village) now opens Fridays from 5.30pm and Saturdays from 4pm. We are a members club, but you are welcome to come have a drink as long as you are accompanied by a current club member. Darren the Bar Manager will give you a great welcome.

There is also a darts team who play in the Buckingham league on Thursday night from 8pm. The bar is always open when the team are at home.

Finally I would like to add my thanks to everybody who attended the opening of the new patio area in memory of Alan it was lovely to see so many friends old and new it was a great day. Alan would have loved seeing everyone enjoying the day!

Sam Willett

WINSLOW AND DISTRICT ART SOCIETY

Meetings are now resuming after a summer break. They are held in Winslow every Thursday morning and in Padbury every Tuesday morning. Anyone over the age of 16 with an interest in visual arts is eligible to become a member subject to a small subscription. We are a friendly, helpful group and anyone interested in becoming a member can find more details on our website www.winslowart.org.uk

Demonstrations in a range of media are normally held at the Winslow Bowls Club on the last Thursday of each month. Entry is from 7.00 for a 7.30 start. In September we welcome back Peter Keegan who will be mentoring members' work. These are enjoyable and informative evenings and last about two hours with a break for coffee and biscuits. Non members are welcome to attend and entry will cost £5.00.

Details of recent and future demonstrations are as follows:

17 November

Jill Buckingham. Pastels. Portrait

26 January

Mark Warner. Acrylics. Seascape

23 February

Jean Turton. Chinese brush

30 March

Heather Miller. Acrylics and mixed media. Lake in a landscape

For more about us please look at our website or contact

Chair: Maureen Barnes 01280 815691

Secretary: John Beckerleg 01280 816932

Treasurer: Jackie Chambers 01296 713607

HOLLAND ENGINEERING SERVICES



MOT TEST STATION
Motorcycle servicing & repairs
Quads & Lawnmowers
Parts and tyres
Mig/Tig Welding

Salden Crabtree Farm
 Whaddon Road MURSLEY Milton Keynes MK17 0PR
 Tel: 01296 728693
 Mobile: 07879 427205

Trevor Evans
'Your Personal IT Man'

PC Support, Secure Wireless Broadband and Home Networks,
 Anti-Virus and Anti-Spyware Support

I can help you solve your IT problems and requirements

A Friendly and Professional Service

Call or Email me for a No-obligation Chat

☎ 01296-714413
 ✉ trevor@trevorevans.me.uk



GREAT HORWOOD PARISH COUNCIL

Useful contact details

Members of the Parish Council:

Please note that councillors now have a dedicated Parish Council email address. This is in order to comply with new Data Protection Regulations that came into force in 2018. It is good policy to keep council emails separate from private emails.

John Gilbey Chairman 01296 711915
johnwgilbeypc@gmail.com

Caroline Cousin Vice Chairman
 01296 713548 carolinecousinghpc@gmail.com

Robert Davies 01296 712763
robert7_daviesghpc@yahoo.com 07967 868881

Dave Taylor 07980 546484
daveghpc@btinternet.com

Jackie Goss 01296 713135
jackiegossghpc@gmail.com

Andy Waller 01296 712798
andywallerpc@mail.com

Jonathan Evans 07470 298324
jjevans.ghpc@gmail.com

Clerk to the Council

Mrs Sue Brazier
 01296 714712 clerk@greathorwoodpc.org.uk

Parish Council Website www.e-voice.org.uk/ghpc/
 Great Horwood Village Hall Bookings 01296 715968

Doctors Car Service 07704 140110

Winslow and District Community Bus 01296 715786

Aylesbury Vale Dial-a-Ride 01296 330088

Community Police Officers
 PCSO Andy Piotrowski Tel: 101
WinslowandDistrictNHPT@thamesvalley.pnn.police.uk



THE CUTTING CORNER
 Est 1998

Traditional Barber Shops

NEW LARGER SHOP NOW OPEN

WINSLOW

Opening times:
 Tues, Weds & Fri 9am-6pm
 Thurs 9am-7pm
 Sat 8.30am-5pm

2a High Street
 Winslow
 Buckinghamshire
 Tel: 01296 715240

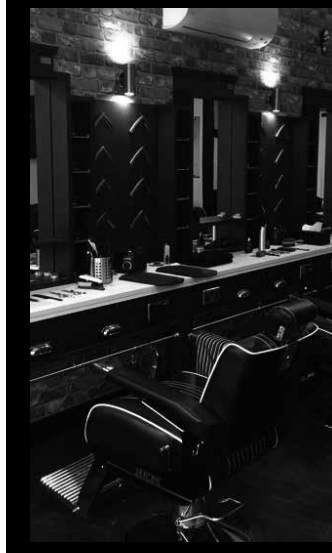
BLETCHLEY

Look online for opening hours.
 140 Buckingham Rd
 Bletchley, Milton Keynes
 Tel: 01908 375987

Appointments available
 Thursdays, Fridays and Saturdays at
 74 High Street, Winslow.
 Book online via our website

www.cutting-corner.co.uk

FREE PARKING! Find us on Facebook



MEN IN SHEDS

Christmas started early at the Shed this year – these pictures were taken in September so, by now, we plan to have quite a stockpile of seasonal goodies ready for the annual Christmas Fair on November 24th.



Last year's bumper turnout left us almost sold-out before the end of the evening, so we'll be extra busy over the next few weeks to ensure we have ample supplies. We will be wrapped-up warm and set up in Market Square from 5:30 – we look forward to seeing you there!

After a two-year absence, last year's Christmas Fair



gave a sense that life had returned to normal, and this seemed to add extra sparkle and energy to what is always a joyful occasion - but we all knew that Covid was still around. We're still being careful at the Shed and remain aware that there are plenty of past and potential Sheddors who need to be extra cautious

and are reluctant to get back to their pre-pandemic social life.

The Christmas Fair certainly provides a fund-raising opportunity and as we 'look forward' to new energy bills we need to take this seriously. Perhaps more important is the chance to meet and chat with anyone who fancies popping in but who, maybe, needs a bit of reassurance. We could simply become a pit-stop for refreshment and a warm-up on your morning walk or you might decide to stick around and help out with some of the making and mending jobs we get asked to do. Plenty of our regulars have workshops at home but, not surprisingly, find that beavering away on their own can get a bit lonely - a bit of Shed time with like-minded chaps can be just what is needed to restore some balance.

**The Shed is open every Tuesday and Thursday
10:00 - 4:00 at Unit 4, Station Road Ind. Estate.
www.MenInShedsWinslow.org.uk**

Or for more info call Dave Saunders; 01296 714164

GREAT HORWOOD CE SCHOOL AND NURSERY VISIT ST JAMES CHURCH FOR HARVEST FESTIVAL

It was wonderful news to hear that St James Church roof had been fixed so that the School could return to hold their annual Harvest Festival Service. The children performed a number of Harvest songs and wrote prayers about being thankful for all that we have. They all delivered their harvest gifts to the High Altar where they were blessed by Reverend Mark Nelson. We were able to demonstrate how God loves us and how we can share that love for others in our local community.

Our new Nursery and Reception children performed the 'Big Red Combine Harvester' with confidence and smiles on their faces which made all the teachers and parents smile too. Everyone had their feet tapping to the beat of the Harvest Shanty performed by Hawthorns Class.

There once was a Harvest Festival
To gather foodstuffs for the community
So bring them up, and put them down
They go to the stage, they go!
Beans, cake, some cabbages, ham,
And bring some sugar and tea and spam,
Today, when we've got all we can,
To the food bank we will go.

We would like to thank all members of the school community for their very generous gifts, as you can see from the photographs with our Junior Governors, a huge amount of produce was collected. This will be delivered to the Buckingham Food Bank at Buckingham Parish Church to support people in the local community who need our help.

with kind regards

Mrs Paula Shaw

Headteacher

Great Horwood CE School

THE SOUND OF BELLS

You may have noticed, in the media, that bells sounded more mellow than usual when rung on Friday 9th of September following the death of H.M. Queen Elizabeth and then louder for the proclamation of King Charles the following day. So what was done to them to make this very noticeable change in tone? The answer is nothing! What had happened is that the striking hammer or clapper, which swings on a pivot inside the bell, had been 'muffled' or given a soft surface where it strikes the bell.



The photos show one form of muffle construction a thick leather pad with a raw hide facing stitched on, (similar in size and shape to a knee pad). The 'pad' is held in place round the ball on the clapper with two straps, the photos clearly show one that has been fitted.

During ringing the bell mouth, open end of the bell, is struck by the clapper which delivers hard and soft blows alternately thus producing an echo effect when heard from a distance.

So ringers had much to do first fitting muffles for ringing following H.M.'s death, then taking them off for the proclamation then fitting them again for ringing at funeral time.



We rang here on Sunday 18th and in the hour prior to the funeral the next day, and between the towers of Gt Horwood and Lt Horwood, rang at Lt Horwood at midday on Friday 9th. Listen out at the remembrance service in November to hear muffled bells again. Now that the roof work is completed we will be beginning practice in the tower again on Monday

evenings. Please do come along if you are interested in having a try, you will be assured of a very warm welcome as ringers are few and far between these days.

The listings show the bell weights, foundries where they were made and the dates they were installed.

David Moore & Cathy Holland



GREAT HORWOOD GIRLGUIDING

We are absolutely delighted to welcome two new volunteers - both quite new to the village but not new to Girlguiding - Yvonne as Unit Helper with the Rainbows and Brownies and Jade as a Leader with the Guides and Rangers.

The girls have taken part in a variety of activities already this term, including den building in College Wood for the Brownies & Rainbows and making drinks cans into mini stoves and cooking on them for the Guides & Rangers. A few of the Rangers and Guides attended the MK Pride celebrations, where we enjoyed the wonderfully friendly and inclusive atmosphere as well as the live entertainment. The older girls also attended the national moment of reflection on the eve of the Queen's funeral.



We had been looking forward to leading villagers in decorating a celebration arch at the postponed Jubilee celebration in September but, sadly, the Queen passed away a few days before that event was due to take place. Instead, all of the Rainbows, Brownies, Guides and Rangers made black flowers and we created a commemorative arch that stood outside the Scout & Guide HQ until the end of the Royal Family's period of mourning.



We have plenty of spaces in our Brownie, Guide and Ranger units and a few in Rainbows at the moment. We do lots of different fun and interesting activities, all at a very affordable price so, if you have a daughter of any age from Reception class to age 18 who might be interested in trying Girlguiding, please contact me for more information (claremartin71@btinternet.com , 07501 636037 or 01296 712034) or register your daughter via the Girlguiding UK website: <https://www.girlguiding.org.uk/information-for-parents/register-your-daughter/>

Clare Martin

Are you in a club or society in Great Horwood and Singleborough? Let Focus know what your doing and share it with the whole village.
editor@ghfocus.com



Great Horwood
Parish Council

PARISH PUMP

WELCOME TO OUR NEW PARISH COUNCILLOR

We welcome Jonathan Evans who has been co-opted onto the Parish Council. This now brings Great Horwood Parish Council to its full complement.

OVERGROWN HEDGES



It's that time of year when we think about tidying up our outside space ready for the winter months when we spend more time indoors. This is just a reminder to make sure your boundary hedges are not encroaching the pavements so they are accessible to walkers including those with pushchairs and prams.

SPEED INDICATOR DEVICE



We are all aware of speeding traffic entering our village. The Parish Council do have a hand-held device that will record speeding cars but it does need a team of volunteers to man it. A short training session will be required, but nothing onerous. Please contact me if you would be interested in getting involved and making a difference to your community.

THANK YOU, MICK AND GILL WOOD

Over the past 7 ½ years, Mick and Gill have been responsible for the MVAS (Mobile Vehicle Activated Sign). They would regularly move it to the various locations at the entrances to the village and download and analyze the data. They are now stepping down for a well-earned rest. The Parish Council are very grateful for their hard work in all weathers and know that the sign makes a difference to the speed of drivers. We are, however, looking for volunteers to take on this task. Full training will be given. If you are interested, please contact me on the email below.

PLAY PARK AT HIGH STREET HOMES DEVELOPMENT



Many of you will be aware that there is a plan to install a play park next to the new homes on Little Horwood Road. This is in the S.106 agreement for the development of the homes but there is however, a process that needs to be adhered to before that land can be transferred into the ownership of the Parish Council. Unfortunately, the land is not at the standard that is required and there is much remedial work that High Street Homes need to carry out before the land goes into the 12- month maintenance period for which High Street Homes are responsible. Only after that time can the land be transferred to the Parish Council and opened to the public. This will also enable the play equipment to be installed by the Parish Council. The Parish Council has no control over this very

frustrating situation and this probably means a minimum 18-month delay for the park to be open to the public and for the installation to take place. We are being honest with residents because like you, we would love to see the space used in the way it was intended. Updates will be published when available.

WELCOME TO GREAT HORWOOD



We hope all new residents have enjoyed reading their Welcome Packs and found the information useful, and are settling into our lovely village community.

Would any new residents we are not yet aware of, like to receive a Welcome Pack? We wouldn't want to

leave anyone out. It has recently been updated and includes information on village organisations, the School, Church and the local area

Please contact John Gilbey by email on johnwgilbeypc@gmail.com

FOCUS ONLINE

Did you know that there is an online edition of Focus with every copy from February 2012?

So, if you have mislaid your copy and can't find the information you need, just log onto

<https://e-voice.org.uk/ghpc/focus-magazine/>

NEXT MEETING OF THE PARISH COUNCIL

The next meeting will be held on Monday 14th November at 7.30pm in the Village Hall. There is always a public participation period when members of the public can have their say. The Notice of the meeting is advertised on the Great Horwood Facebook page, the Parish Council website and the noticeboard in the High Street. Minutes of meetings can be found on the noticeboard and the Parish Council website e-voice.org.uk/ghpc/

Sue Brazier, Parish Clerk Great Horwood
clerk@greathorwoodpc.org.uk

Shaun Guard TV & WIFI SERVICES

- Aerials - repaired & supplied and poor reception solved
- Satellite - Sky Q dish upgrades, discreet dish installation
- Internet - blackspots cured, data cables to your TVs
- TVs - hung on your wall or set up and tuned
- CCTV & Door Entry - domestic installations

OXFORD AERIALS

www.oxfordaerials.co.uk


Call Bicester
01869 879111

THE PLUMBER 

Apprenticeship Served 1972 - 78
 City and Guild Qualified
ON CALL EVERYDAY
 Domestic and Commercial Installations,
 Maintenance and Repair Service.

- 💧 Burst/Leaking Pipes
- 💧 Blocked Sinks/Toilets
- 💧 Hot Water Tanks
- 💧 Overflows
- 💧 Showers
- 💧 Radiators and Pumps
- 💧 Garden Taps/Water Butts
- 💧 Fault Finding
- 💧 FREE WRITTEN QUOTE

Call The Plumber Anytime
07970 317843
theplumber@email.com

1st aid for your plumbing 

**Winslow & District Community Bus
 Needs Volunteer Drivers**

The Winslow & District Community Bus relies on volunteer drivers to run its services, excursions and hires.

We are always in need of volunteer drivers, especially at the moment!

So, if you have a D1 on your licence, and have some spare time, please consider becoming a driver for your local Community Bus.

You can do as much or as little as you like, from our shorter local runs to some of our longer day trips. We visit all kinds of places, including garden centres, stately homes, shopping centres, countryside drives as well as our regular scheduled bus services, and the people who use the bus are a very friendly crowd!

We offer certificated training to MIDAS standard and pay out-of-pocket expenses.

Please call or visit our website for more information

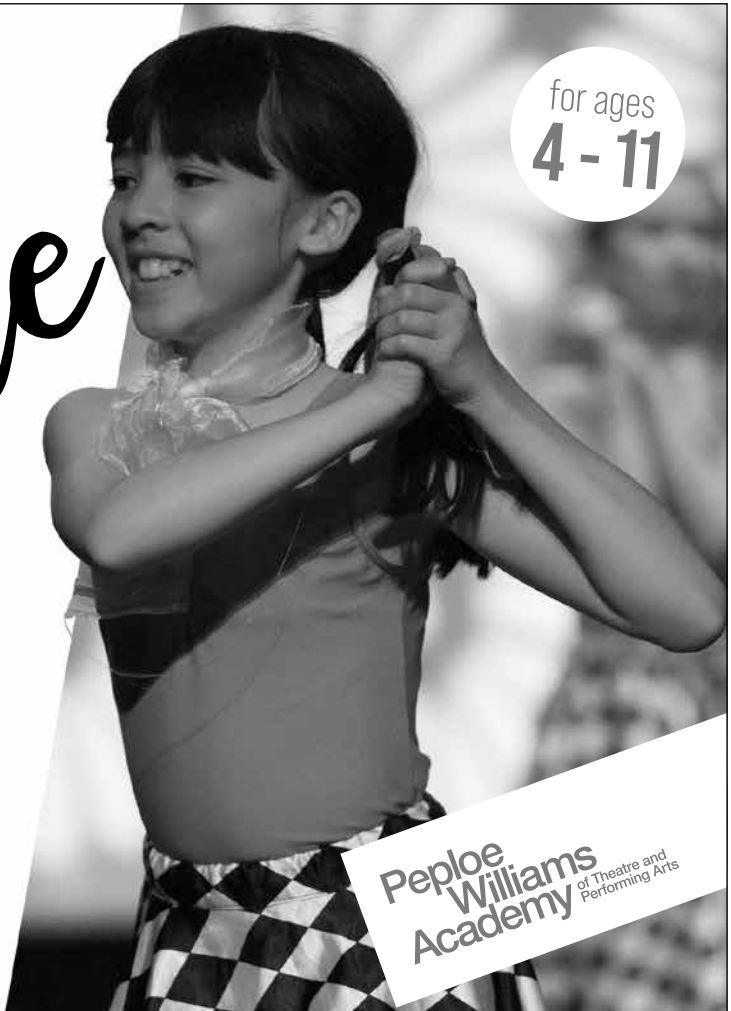
Local
Musical Theatre
Classes

for ages
4 - 11

Be a star on stage and in life

BOOK A TRIAL CLASS TODAY AT
PWACADEMY.COM
 07568 447 131 | 01296 733 258 | admin@pwacademy.com

Peplow Williams
 Academy of Theatre and Performing Arts



Winslow Community Bus

www.winslowbus.com

wdcbenquiries@btconnect.com Tel: 07483 336440



November and December 2022

Aylesbury Market Bus

runs every Friday and Saturday morning -- from Winslow, through Gt Horwood, Little Horwood, Mursley and Swanbourne, arriving in Aylesbury just after 10am and departing 12.15pm. Drop off at Sainsburys & Broadfields on request. FREE with a bus pass, otherwise only £4.50 return.

Winslow Market

Service 54abc - runs every Wednesday morning

This service picks up in the surrounding villages and then into Winslow, (Swanbourne, Mursley, Great Horwood, Whaddon, Nash and The Claydons). Pick up times vary according to village. Bus passes accepted, otherwise £3.00 return.

Buckingham Bus

Tuesday 1st November 1st & Tuesday 6th December

Picking up in Winslow and surrounding villages. 1 hour in town then 1 hour in Tesco, or 2 hours in Tesco. Door to door service. Bus passes accepted, otherwise £4.50 return.

Westcroft Shopping

Thursday November 10th and 24th and Thursday December 8th & 22nd.

Picking up in surrounding villages. Morrisons, Boots, Aldi, etc. Bus passes accepted, otherwise £4.50 return. Ring to book.

Buckingham Garden Centre

Monday 7th November.

Morning Coffee and a little early Christmas shopping. cost £4.00 travel

Milton Keynes Shopping

Monday 14th November

Get a head start on you Christmas shopping!! Shopping in Milton Keynes, Travel £5

Asda

November 28th & Monday 19th December

Bus passes are not accepted on this trip and will cost £5.00

Picking up in Winslow and surrounding villages

Asda Shopping with the option to drop at Stadium MK1 for M&S, Primark, Next and more.

The Cock Hotel in Stony Stratford

Thursday December 15th.

A little last minute Christmas shopping and an early dinner at The Cock Hotel.

Call for more details

Please contact the WDCB Coordinator for more details.

Timetables can be found online www.winslowbus.com

On notice boards outside the Town Council offices, Winslow Library or calling the WDCB coordinator

Passengers are not to travel on the bus if they or any member of their household are displaying any signs of the COVID-19 virus.



CALLINGHAM'S
PAINTER & DECORATORS

Quality Decorators
Over 15 years experience

- ↻ Interior and Exterior
- ↻ Hand Painted Kitchens
- ↻ Airless Spray System
- ↻ Free Quotations and Friendly Advice

Contact
01280 816699
07941 054 831
www.callinghams.com




Chartered Accountants and Business Advisers

For all your accountancy needs

Bookkeeping services	Accounts preparation
Corporation Tax	VAT Returns & services
PAYE Returns & services	Company formation
Company secretarial work	Tax planning advice
Self-Assessment	Tax Return preparation

**The Barn, 11a Queen Catherine Road,
Steeple Claydon, Bucks MK18 2PZ**

Contact us for a free consultation

Tel: 01296 738668 01296 826177
Mob: 07812 026346
Email: office@ajrandco.co.uk



Chartered Accountant & Business Adviser



ExemplaCare
Exceptional carers & nurses at home

We offer the very best personalised care and support in the comfort of your own home.

We serve Buckingham, Winslow, Brackley & the surrounding villages.

- Personal Care
- Nursing Care
- Home Help
- Complex Care

☎ 01280 821860
✉ contact@exemplacare.co.uk
🌐 www.exemplacare.co.uk

Serving our local community & employing local staff.

Claydon Auctioneers

Auctioneers of:

Antiques, Collectables, Silver, Jewellery, Watches, Paintings & Prints, Furniture, Clocks, Militaria, Sporting Goods & Memorabilia, General Goods & Chattels, etc.

Free auction valuations available, Partial & total house clearance service, Insurance, probate & family division valuations

Auctioneer: Louise Gostelow

Contact: 01296 714434
 info@claydonauctioneers.com
 www.claydonauctioneers.com
 Claydon Auctioneers Ltd.
 The Claydon Saleroom,
 Calvert Road, Middle Claydon,
 Buckinghamshire, MK18 2EZ



Buckingham Wills & Probate

Part of Bicester Wills Ltd



- Standard Single Will - **£199**
- Standard Mirror Wills - **£299**
- Lasting Power of Attorney Property & Financial or Health & Welfare - **£325 each**
 Both types for one person - **£500**
 Both types for a couple - **£950**
- Probate Assistance from - **£1,200**
- Prepaid Funerals Plans - from **£1,700**

Gail and Lesley offer a friendly estate planning service



Come in and see us
 The Garage, Castle Street,
 Buckingham, MK18 1BS
 or phone 01280 811201



lesley@buckinghamwillsandprobate.co.uk 01280 811201
 www.buckinghamwillsandprobate.co.uk



CBD

Join the Millions Discovering the Natural Alternative

We have produced specifically targeted CBD Oils enriched with supplements to address your specific needs.

Mood, Memory, Immunity, Relax, Menopause

Available in up to 4 strengths: See the website for more details

www.hemplifecbd.co.uk

The very best quality CBD is available locally now and with 25% off using exclusive code GH25

Orders can be hand-delivered in the local area.



Natural Ingredients



Vegan Friendly



Gluten Free



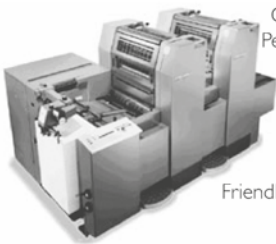
THC Free



HARLEQUIN
P R E S S L T D

Lithographic and Digital Printing

- Booklets
- Brochures
- Business Cards**
- Compliment Slips
- Delivery Notes
- Directories
- Draw Tickets
- Event Tickets
- Invitations
- Invoice Sets**
- Labels
- Leaflets**
- Letterheads
- Magazines**
- Note pads
- Order of Service
- Personal Stationary
- Postcards
- Posters
- Programmes
- and Focus*



Friendly Service, Free Advice

Tel: 01908 506722

12 Bacon House Farm • Little Horwood • Milton Keynes • MK17 0PS
T: 01908 506722 • E: office@harlequin-press.co.uk • W: www.harlequin-press.co.uk



MOORESPARKS
E L E C T R I C A L



07708 531 227 / 01296 708 683



moore Sparks@hotmail.com



www.facebook.com/moore Sparkselectrical



@moore Sparkselectrical

- FREE QUOTATIONS
- DOMESTIC & COMMERCIAL
- LIGHTING & POWER
- FAULT FINDING
- REWIRES
- CONSUMER UNITS
- TESTING, INSPECTION & CERTIFICATION



What's my house worth in Great Horwood?

If you want to know, get in touch with Ella Homes and Alexander & Co for your free, no obligation valuation.

We're working in partnership to cover more of your local area.

Aylesbury: 01296 710200

Bicester: 01869 324711

Buckingham: 01280 817400

Winslow: 01296 715386

ella



in partnership with

ALEXANDER & CO

www.ella.co.uk

www.alexanderandco.co.uk

LIGHT UP THE TOWER OF ST JAMES

If you wish to sponsor the tower lights for that special occasion, please help us by using this form for your request.

I would like to sponsor the lights on the following date (s):

Date:

Commemorating.....

Date:

Commemorating.....

Date:

Commemorating.....

Date:

Commemorating.....

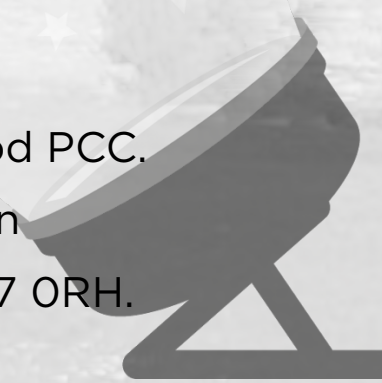
The cost is £5 per night.

Cheques payable to: Great Horwood PCC.

Please send to Ian Lamberton

3 The Green, Great Horwood MK17 0RH.

Tel: 01296 715968



D. Johnston

Heating & Plumbing Solutions

Boiler installations / servicing / repairs

Oftec registered oil boiler specialist

Gas safe registered

Landlord Safety Certificate

Full Central heating Installations

Under Floor Heating

General Plumbing

Power flushing

Pressurised hot water systems

Bathroom installations



www.d.johnstonhps.co.uk

Email: djohnstonhps@outlook.com

Tel: 01296 655169 / Mob: 07702 036217

Precise PVC-u Building Supplies Ltd

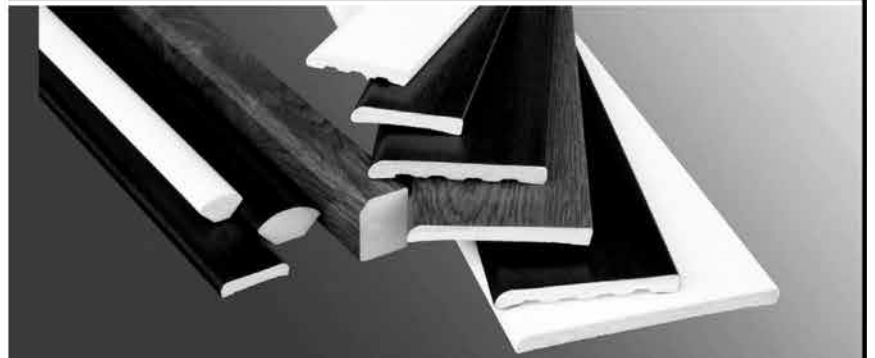
Suppliers of Building Plastics

Precise PVC-u Building Supplies Ltd is a family run company based in Bletchley, Milton Keynes. We are established since 2003 and pride ourselves on our friendly and informed customer service.



Our experience in the trade ensures that we supply the best quality PVC products to all our customers. We guarantee next day delivery on all of our stocked items. We are a supplier of a wide range of plastic building products. Many of our customers use our services like a manufacturers and suppliers as we can order any product that is currently not in stock.

We are suppliers for window fitters, builders, plumbers and DIY enthusiasts. Whether you're an individual who likes home improvements or a professional window fitter we are able to supply you with all the necessary materials. Come down to the industrial estate and see how we can save you and your company money on all your PVC supplies.



www.precisebuildingplastics.com

T: 01908 270 994 E: sales@preciseupvc.co.uk



MK ONE Business Centre, Unit B, 12a Romar Court, Bletchley, MILTON KEYNES, Buckinghamshire, MK1 1RH

Editor: David Brazier editor@ghfocus.com
Typing & Layout: David Brazier, Andy Gibbs.
Printing: Harlequin Press Ltd.
Copy deadline: 15th of month before publication.

Distribution: June Margerrison, Ann Biggins, Edwina Daymond, Louise Edwards, John Gilbey, Valerie Hancock, Duncan Hogston, Cathy Holland, Helen Jackman, Ian Lamberton, Gary Lee, Kathy Thompson, Sylvia Whitehall, Gill Wood.

Available online at: www.e-voice.org.uk/ghpc



LOCAL WORK OPPORTUNITY!

Events Coordinator

Salary : £25K - 28K
Start: Immediate
Hours: 9:00 - 5:00 (ability to be flexible)
Location: Singleborough - MK17 ORB - office based

About Nipperbout:

Nipperbout is an event childcare provider, governed by the relevant registered body (e.g: Ofsted), servicing exhibitions, conferences, festivals, fun days and events throughout the UK and Europe.

Skills Required:

IT Skills - Microsoft Office & advanced knowledge of Excel
 Ability to use a data base confidently
 Some graphic knowledge useful (to make creative forms and timetables)
 Experience of Apple Mac an advantage
 Confident telephone manner
 Good organisational skills
 Can work under direction and on own initiative
 Ability to prioritise and stay calm under pressure
 Must be comfortable with friendly dogs and working in a home based office, car essential.

Nipperbout is committed to safeguarding and promoting of welfare of children and has a culture of ongoing awareness and vigilance throughout the company.

Call 01296 712658 for application form and interview

Ad hoc Drivers and "set up/break down' staff required! Are you over 25, able to drive a small van, energetic and hard working?

Nipperbout is a national mobile childcare provider, registered with Ofsted , servicing exhibitions , conferences, festivals, fun days and events throughout the UK and Europe.

We are seeking ad hoc occasional staff to join our friendly team of drivers, to load, deliver and set up our crèches starting from an MK base (Singleborough) and driving to locations around Great Britain. We provide a list of dates and you can advise us of your availability.

PAY - £12 per hour -

**Clean license and 2 years driving experience necessary.
 DBS check will be required but not needed for application.**

Requirements:

- * 2 x references
- * Work or education history
- * 3 types of ID

Nipperbout is committed to safeguarding and promoting of welfare of children and has a culture of ongoing awareness and vigilance throughout the company.

Contact: Steve or Janthea 01296712658 or email events@nipperbout.com for an application form