

NOVEMBER
2021



REMEMBRANCE SUNDAY 14TH NOVEMBER

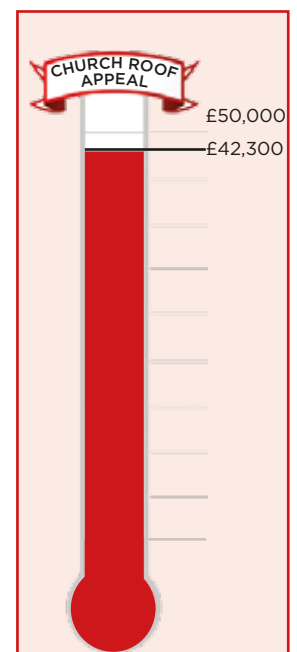


After last year's poignant socially distanced outdoor service we are planning for St James' Church to hold a traditional Remembrance Day service this year. The service will start at the earlier time of 10.30am in church so we can observe the two minutes silence at the War Memorial in the High Street at 11.00am. If this should change, posters will be displayed in the village and a message posted on the village Facebook page.

St James' Roof

We have had good news and bad news on the roof recently. First the good news after nearly 2 years we finally received planning permission from Buckingham County Council for a replacement Zinc roof. (Zinc has been around as early as Greek and Roman times and has been used widely for well over two centuries appearing on many historic buildings in this country and in Europe). The bad news was that unfortunately, the temporary roof felt lifted after strong winds, and we once again had water ingress. We have now had the roof felt repaired and hopefully it will last until the permanent replacement.

We are now in the process of obtaining planning permission from the Church in Oxford and then will be able to apply for grants. We are extremely grateful for all who have donated or attended any one of our fund-raising events. If you would like to support our roof fund we can take cash, cards or cheques please call Russell Margerrison on 714554 or visit www.justgiving.com/crowdfunding/St-James-GH-Roof



Advertising and copy deadline for next issue : 15th November 2021.
To advertise or submit articles email: editor@ghfocus.com

Light up the tower of St James

If you wish to sponsor the tower lights for that special occasion, please help us by using this form for your request.

I would like to sponsor the lights on the following date(s):

Date:

Commemorating

The cost is just £5 per night.

Cheques payable to: Great Horwood PCC.

Please send to Ian Lamberton

3 The Green, Great Horwood MK17 0RH.

Tel: 01296 715968



CALLINGHAM'S
PAINTER & DECORATORS

Quality Decorators

Over 15 years experience

- ∞ Interior and Exterior
- ∞ Hand Painted Kitchens
- ∞ Airless Spray System
- ∞ Free Quotations and Friendly Advice

Contact

01280 816699

07941 054 831

www.callingham.com



Dulux
TRADE
Trade & Trusted



SUNDAY 7TH NOVEMBER 2021
— ❄ —

CHRISTMAS SHOPPING EVENT

UNIQUE, LUXURY, HANDCRAFTED PRODUCTS FROM LOCAL MAKERS

GREAT HORWOOD VILLAGE HALL, MK17 0QL

FREE ENTRY/REFRESHMENTS/PARKING

11AM-3PM

Church Times

Rev Andrew Lightbown
e-mail alightbown@hotmail.co.uk phone 01296 712564
www.winslowbenefice.org.uk

St James' Services for November			Sidesmen	Readers	Intercessions
7th Nov	11.00am	Holy Communion	D Brazier	S Brazier	D Brazier
14th Nov	10.30am	Remembrance Sunday	J Margerrison	R Margerrison	J Margerrison
21st Nov	11.00am	Holy Communion	P Moyles	S Bayliss	J Brigden
28th Nov	11.00am	Come and Share	I Lamberton	I Lamberton	S Brazier
5th Dec	11.00am	Holy Communion	J Margerrison	R Margerrison	J Margerrison

Church Key - November - Ian Lamberton - 715968, December - David Moore - 713281.

ROAD CLOSURE

As in previous years, St James' has been given temporary road closure on Sunday 14th November 2021. This is for a wreath laying ceremony during the Remembrance Service at St James's Church, Great Horwood.

The road closure will be in force between 10:45am and 11:15am.

The road in question is as always, between The Swan Public House/Pilch Lane and the corner of Nash Road/Little Horwood Road.

Please could you try to avoid using your motor vehicles in this area at this time, as a mark of respect, as well as for the safety of the congregation of St James.'

Many thanks

C.Finnemore, Secretary St James' PCC

WREATH MAKING AND CHRISTMAS TREE FESTIVAL - SATURDAY 4TH DECEMBER

Hopefully, many of you will remember that pre-Covid, St James' ran a very popular wreath making event with village organisations decorating their own Christmas Trees to be displayed in the Church for the month of December. This event will once again be led by Rev Mark Nelson on Saturday 4th December from 10am until 12 noon. Coffee and mince pies will be served whilst singing along to Christmas carols.

More details to follow in next month's Focus.

MACMILLAN COFFEE MORNING

Biggest thank you to everyone who attended, supported volunteered and The Swan who hosted it. We all raised an incredible £450.60 helping to support Macmillan Nursing a wonderful charity. Here's to next year. Many thanks again. Georgina and Colin Pacitti.

CHURCH LIGHTING

The Church was lit on the 7th of October to commemorate Issy and Daisy's 21st Birthday

GREAT HORWOOD VILLAGE HALL

For general enquiries hall availability and bookings please contact Ian Lamberton by email ianlamberton@aol.com or by telephone on 01296 715968

ART AND CRAFT GROUP

WE'RE BACK.....

for knitting, needlework, painting, papercrafts, crochet and anything that people care to do.

The Art and Craft Group bring along our own materials and are all learning together. We are by no means experts but will try to help anyone in developing their interests.

Meetings are on Friday mornings, 9.30am to noon in the Village Hall and £2 a session.

We are Covid-19 conscious, socially distanced, wear masks when not seated and bring our own refreshments.

Its so good to be up and running again and we would be pleased to welcome all who would enjoy our informal meetings.

Liz Nicholls (Tel: 715331)

Trevor Evans

'Your Personal IT Man'

PC Support, Secure Wireless Broadband and Home Networks,
Anti-Virus and Anti-Spyware Support

I can help you solve your IT problems and requirements

A Friendly and Professional Service

Call or Email me for a No-obligation Chat

☎ 01296-714413

✉ trevor@trevorevans.me.uk

To advertise or submit articles email:
editor@ghfocus.com

BY 15th MONTH



Greenway Dog Walking

DAYCARE AND BOARDING WITHIN THE FAMILY HOME
 GROUP OR INDIVIDUAL WALKS, POP-INS
 QUALIFIED CANINE 1ST AID AND EMERGENCY CARE
 CPD CANINE BODY LANGUAGE
 FULLY INSURED AND LICENSED LC-201905 37236
 BUCKS CC

FIND US ON FACEBOOK
 PLEASE CALL LOUISE FOR ANY ENQUIRIES
 07889658215
 BASED IN GREAT HORWOOD



HOLLAND ENGINEERING SERVICES



MOT TEST STATION
Motorcycle servicing & repairs
Quads & Lawnmowers
Parts and tyres
Mig/Tig Welding

Salden Crabtree Farm
 Whaddon Road MURSLEY Milton Keynes MK17 0PR
 Tel: 01296 728693
 Mobile: 07879 427205

Piano Lessons

PIANO TEACHER

Why not expand your mind and interest in music with a fully qualified teacher of over 30 years experience teaching youngsters and adults for fun and exams.

Call: Geraldine 07890 268387
 email: gerryrb@btinternet.com



MICK WOOD Heating Services Ltd

SERVICE, REPAIR & INSTALL
OIL FIRED BOILERS

We are Grant G1 & Worcester AI approved boiler installers who are able to offer longer warranties at no extra cost to you.

All installations are to Oftecregulations.

OIL FIRED COOKERS
 (Service & breakdown only)

- * Prompt personal attention
- * Oil tank gauges fitted
- * Power flushes



Registered Technician

Tel: 01296 730 670
 Mobile: 07979 645 472



CLINICAL PILATES CLASSES

Padbury Village hall
MATWORK

Wed @ 9.30am

OLDER ADULT

Wed @ 10.45am

Thurs @ 9.30am

CHAIR BASED

Thurs @ 10.45am

Ruth Reid APPI
07736 438443

info@rlr-therapy.com

www.rlr-therapy.com

FaceBook RLR Therapy @rlrtherapy

GREAT HORWOOD AND SINGLEBOROUGH WI

CSI comes to Great Horwood Village Hall

Crime Scene Investigation, raising monies for charities... your local WI in Great Horwood is at the heart of the community.

Following more than a year of Great Horwood and Singleborough WI meetings being held on Zoom, the group is delighted to have returned to the Village Hall. The committee has planned a full programme for the next 12 months with a line-up of interesting guest speakers, plus competitions, workshops, weekly rambles and outings taking place throughout the year.

For our second face-to-face meeting this year, held in October, we were honoured to have a real-life Crime Scene Investigator who gave a fascinating presentation about the role of CSI in protecting and examining crime scenes and the modern methods used to help solve serious crimes.

Linda Cox has been a Crime Scene Investigator for more than 11 years with Thames Valley Police and explained the different types of forensics used to trace DNA and collect evidence. She said that as well as investigating crimes CSI are also tasked with helping identify victims of serious incidents such as a plane crash, motorway pile up or other disaster such as the Marchioness pleasure boat tragedy on the River Thames in 1989 and the Didcot Power Station explosion in 2016.

As a result of September's meeting, raising awareness of the charity 'Smalls For All', WI are collecting bras in good condition and new (preferably black) knickers for the smallsforall.org charity. After our November meeting we will be delivering the donations to the charity.

We are also participating in the Samaritan's Shoe Box Appeal for collection during 15th - 22nd November. You can buy a shoe box online, either pre-packed or choose the contents yourself for £20. Or you can fill a covered shoe box as we used to do and take it to Steeple Claydon drop off point with £5 for admin. All details are on their website: samaritans-purse.org.uk.

By the time this issue of Focus is published, we will also have enjoyed a day trip to Waterperry Gardens which features eight acres of beautiful, landscaped ornamental gardens.

The walking group continues to be active and in October had clocked up 100 miles since April as part of the Bucks WI Federation 'Walk 100

Miles More' Challenge marking 100 years of the Federation. Each Monday the walkers enjoy 4-5 mile walks through unspoilt countryside, woods and pretty parkland around different areas which recently have been Swanbourne, Old Wolverton and Water Eaton.

Great Horwood and Singleborough WI meet on the second Tuesday of every month in the Village Hall. The next meeting, on 9th November, will be our Annual General Meeting (new committee volunteers welcome) and feature Milton Keynes' Poet Laureate Mark Niel as our guest speaker. Attendees will be able to hear Mark's fascinating story about how he moved from a safe 20-year career in financial services to an uncertain, but more creative profession as a poet, writer, performer and workshop facilitator. Mark has appeared on several BBC radio programmes and some of his books will be available to purchase on the night.

If you would like to join us, please contact Angela Mayne - angela.mayne@googlemail.com or 715400.

Heather Grant

HORWODE PECE

The Management Committee of Horwode Pece have been busy over the course of two weekends with the gratefully received help of Mark Owen, tidying up the Rec, cutting back hedgerows, re-tensioning the zip wire (no mean feat), adding strimming guards around wooden supports, repairing certain areas of deliberate damage which is incredibly frustrating, cleaning and maintenance of seating and tables, and a general check over for ongoing work. The compacted ground around the two play areas, following compaction of this ground while installing the rubber chippings has now been reseeded with grass seed, and a wildflower area has been planted in front of the hedge, between the hedge and the path.

The New Waste Bin, supplied by the Council, has been moved next to the 'Dog-poo' bin, near the footpath entrance.

Cathy Holland, Rec Committee

FOR SALE

5 drawer desk (one drawer for files)

Measures 1.5m x .72m height x .75m wide

Good condition

Donation to Church Roof Fund

Tel 01296 713281



Arthur's

small tree work & hedge
trimming services

07342 181713

arthursgardenservices@gmail.com

Qualified arborist
Public Liability Insured

The Lavender Workout: for mind and body.

Stretch, strengthen, tone and relax with exercises derived
from Fitness Yoga, Tai Chi and Pilates.

Returning and new exercisers
of all ages and fitness levels welcome.

Great Horwood Village Hall
Thursdays 10.00 am - 11.00 am

Re-starting 5/8/21
4 weeks through August £34

Pre booking essential. Limited spaces.
Following all current Covid-19 guidelines.

Please contact Sandra Pratt AFAA, AFOGB, Fitpro.

07775 428594

Email: sandrapratt45@yahoo.co.uk



Established 1990

Your Local
Window and Conservatory
Specialists
Products made to suit in
UPVC

From Design thru' to completion ...

01296 712151

Email: NandGwindows@aol.com

FENSA Registered



MOORESPARKS
ELECTRICAL



07708 531 227 / 01296 708 683



mooresparks@hotmail.com



www.facebook.com/mooresparkselectrical



@mooresparkselectrical

- FREE QUOTATIONS
- DOMESTIC & COMMERCIAL
- LIGHTING & POWER
- FAULT FINDING
- REWIRES
- CONSUMER UNITS
- TESTING, INSPECTION & CERTIFICATION



MEN IN SHEDS *A friendly workshop where men can gather, work together, share skills and knowledge or just have a chat over coffee.*

Christmas preparations before the leaves have finished falling always seem a bit early but there's no avoiding it now; 'Strictly' and 'Bake-Off' are well under way, pumpkins and fireworks will soon be done and dusted and brace yourselves for the annual blast of 70's tunes that probably should have been forgotten. Things get busy at the Shed too as we prepare for Winslow's annual Christmas Fair. This is always a great, sociable occasion and provides us the chance to explain what we get up to and for you to see if Shedding is something you or someone you know might want to explore. Visitors and new members are always welcome. It's also a useful fund-raising opportunity and we will have plenty of seasonal (and not so seasonal) goodies to buy - mostly hand-made by gnomes in our very own grotto.

Our training presentations have got off to a good start and will run every Thursday morning from 11:00 - 12:00 throughout November and December. Full details of what is being covered and when is on our website - topics this month include using bandsaws, power routers and woodturning.

We hope to see you soon at the Shed or wrapped-up warm and in Market Square for the Fair on Thursday 25th November.

The Shed is open every Tuesday and Thursday from 10:00 - 4:00 at

Unit 4, Station Road Ind. Estate. www.MenInShedsWinslow.org.uk

**Or for more info call Dave Saunders;
01296 714164**

GREAT HORWOOD SILVER BAND

Following a very difficult time, the Great Horwood Silver Band are finally returning to their normal activities. After serenading some households in the vicinity of the Great Horwood School playground for the months between May and September when we were forced to rehearse outdoors due to COVID restrictions (sorry for the wrong notes!), we are now back to rehearsing in the Village Hall on a Wednesday evening, even if we do have to have all the doors and windows open to follow government guidelines.

Unfortunately, this is the main band only at the moment, but we are hoping to restart our training band in January 2022. To this end, we would again put a plea out for any person who would like to join us. We would welcome any player, of any age and any ability so if you are interested, please see the contact details below or feel free to come and meet us on a Wednesday evening between 7 and 9pm to see if playing for us would be something you would like to do.

We have returned to performing at some engagements, our first public outing being the Great Horwood Church fete and then a very well attended Concert on the Green in August. Thank you for everyone who came along and listened we really enjoyed playing for you and are humbled at the support that was shown for us after our enforced absence. We will return next summer for more Concerts on the Green in 2022, restrictions allowing.

As you may have noticed if you did attend either of these events, we have welcomed a new Musical Director to our merry band, Mr Chris

Benger who is whipping us back into shape and taking the band forward to a rejuvenated future. We are all enjoying working with him and look forward to a bright future.

We thankfully have a very busy period coming up in the lead up to and including Christmas, with Remembrance services fast approaching. Vicki Cook will be representing the Band at the Great Horwood Remembrance service, while the rest of us will be in Winslow leading the Remembrance parade there on Sunday 14 November. So, dates for the diary are:

Thursday 11 November - Remembrance service - Preston Bissett Church

Saturday 13 November - Remembrance service - Whitchurch

Sunday 14 November - Remembrance service - Great Horwood - Vicki Cook

Sunday 14 November - Remembrance parade - Winslow

Thursday 25 November - Winslow Christmas Fayre - Winslow

Sunday 5 December - Christmas Concert with Great Horwood School - Great Horwood School

Sunday 12 December - Christmas Concert - Great Horwood Village Hall


Tuesday 14 December - Carols around the Christmas Tree - Adstock

Friday 17 December - Carols on the Green - Little Horwood


Tuesday 21 December - Carols outside Tesco's - Buckingham

Friday 24 December - Carols around the village - Great Horwood

****RELAUNCH****




WHERE FITNESS AND FUN
Come to Party!



In Person and Online Classes
Full Schedule and Information
www.jazzercisebbh.com

To book your spot, contact Keri
07900 987230 jazzercise1@hotmail.co.uk



**Do more.
Learn more.
Be more.**


Put your skills to use, learn new ones, and contribute to an amazing life-experience for you and your local community.

Volunteering is easier than you think. With full support and training, you can volunteer on a flexible basis.

Put your skills to use, learn new ones, and contribute to an amazing life-experience for you and your local community.

Volunteering is easier than you think. With full support and training, you can volunteer on a flexible basis.

scouts.org.uk/join
#SkillsForLife



Scouts
1st Great Horwood Scout Group

Copyright 2018 The Scout Association Registered Charity numbers 306101/SC038437

Local
Musical Theatre
Classes



Be a star on stage and in life

BOOK A TRIAL CLASS TODAY AT
PWACADEMY.COM

07568 447 131 | 01296 733 258 | admin@pwacademy.com

Peplow Williams Academy of Theatre and Performing Arts

for ages **4 - 11**

Saturday 25 December - Christmas morning wake up - Great Horwood

There are still a couple of dates to be added when all the details have been finalised, so as you can see, we are going to be busy, busy, busy. Watch out for details of our Christmas concert in the Village Hall on the 12th of December and also our concert on the 5th of December at the school which will be put on our calendar on our website and our Facebook page. We look forward to the audience participation at both of these events!

Our 100 club has also had its first draw since lockdown, which took place on the 13th of October and the winners were:

1st place - Mrs D Cook

2nd place - Mr K Mould

We look forward to seeing many familiar faces and hopefully some new ones at our events over the coming months.

Contact details:

Email: ghsbsecretary@gmail.com

Website: www.great Horwood and.com

Or please visit our Facebook page

CAKE STALL

Saturday 13th November

IN CHURCH PORCH

10am

**In aid of
St James' ROOF APPEAL**

CONTRIBUTIONS GRATEFULLY ACCEPTED TO:
LINDSAY DUNHAM, WIGWELL, SPRING LANE, Tel 712521
MARGARET MOORE, 8 HIGH STREET, Tel 713281

Science Walk

This term Maples have been reading 'the pebble in my pocket' by Meredith Hooper. At the beginning of term they chose their own pebble to keep safe in their draws and have been learning about the journey it may have made.

Today the children went on a discovery walk around the local church to explore the different rocks in use and consider why they were the best rocks for the job.



Great Horwood Parish Council

PARISH PUMP

LODGE PARK HOMES

At the Parish Council meeting in October a



representative from Lodge Park Homes presented plans and was able to informally answer any questions or concerns. The developers hope that building will be complete by August next year. In order to achieve this, it is necessary to cut the hedgerow back to the field boundary where the new houses will be. A number of trees will need to be felled but rest assured, additional trees will be planted. The developers are going to provide some of the trees, and we will receive \$106 monies from them that can be spent on trees.

In July's Parish Pump it was mentioned that there will be an opportunity to get involved either individually or part of an organization to honour the Queen's leadership of the Nation. The Queen's Green Canopy is a unique tree planting initiative created to mark Her Majesty's Platinum Jubilee in 2022. For more details and to get involved please log onto www.queensgreencanopy.org to 'Plant a tree for the Jubilee' and enhance our environment for future generations.

OUTSTANDING BUCKS COUNCIL MATTERS



The Parish Council are aware that there are a number of matters that still need to be addressed by Buckinghamshire Council. In particular the road

resurfacing has left many drain covers well below the new surface. Also, the barrier at the bottom of the footpath from the High Street to Spring Lane will need to be replaced. We will continue to chase these and other issues until a satisfactory conclusion is reached.

THE GREEN - A NEW LOOK

It was thought that The Green could do with a 'new look'. The Parish Council has some ideas and plans are currently being drawn up. More information to follow next month.

HIGH STREET HOMES



Building continues apace at the High Street Homes development in Little Horwood Road. The park, which is on the western part of the site will be started in January.

This will include an area with children's play equipment and green open space for all to enjoy.

WINSLOW AND VILLAGES COMMUNITY BOARD FUNDING

The Parish Council has recently assisted the Great Horwood Scouts and Guides in getting a grant from the Community Board of £2799 for refurbishment of the area outside the Scout Hut including pollarding of a large tree. We hope this makes a difference and they can enjoy their new surroundings.

WELCOME TO GREAT HORWOOD



A big welcome to our new residents! There have been many people moving in and out recently. We hope you are settling in and enjoying our

lovely village community. Would you like to receive a Welcome Pack? This has recently been updated and includes information on village organisations, the School, Pub, Church, and the local area. Please contact John Gilbey by email on johnwgilbeypc@gmail.com

The date of the next meeting is **Monday 8th November at 7.30pm** in the Village Hall. Minutes of meetings can be found on the noticeboard and the Parish Council website e-voice.org.uk/ghpc/

Sue Brazier, Parish Clerk Great Horwood
clerk@greathorwoodpc.org.uk

Shaun Guard
TV & WIFI SERVICES

- **Aerials** - repaired & supplied and poor reception solved
- **Satellite** - Sky Q dish upgrades, discreet dish installation
- **Internet** - blackspots cured, data cables to your TVs
- **TVs** - hung on your wall or set up and tuned
- **CCTV & Door Entry** - domestic installations

OXFORD AERIALS
www.oxfordaerials.co.uk
Call Bicester
01869 879111

Maples as Archaeologists



Whilst learning about the Stone Age, Maples became archaeologists for the day. Later they chose their own special artefact to study. They considered what the items were made of, how old they might be (using evidence to explain this) and what the items may have been used for and by who.



WINSLOW AND DISTRICT ART SOCIETY

Our weekly meetings continue to be held in Winslow every Thursday morning and Padbury every Tuesday morning. Anyone over age 16 with an interest in visual arts is eligible to become a member subject to a small subscription. We are a friendly and helpful group and anyone who is interested in becoming a member can find more details on our website www.winslowart.org.uk

Demonstrations in a range of media are normally held on the last Thursday of each month. Entry is from 7.00 pm for a 7.30 start. Details are:

28 October - Sarah Janavicious Mixed media textural collage

18 November - Mark Fennell Media, oils, portrait

27 January - Elizabeth Baldin Watercolour and acrylics inks. Farmyard animals

These are enjoyable and informative evenings and last about two hours with a break for tea and biscuits. Non-members are welcome to attend and entry will cost £5.00

Plans continue for our exhibition which will be staged over the weekend of 6 and 7 November in our local Public Hall. This allows for the public to look at and purchase work done by our members. Admission is free.

Our new Facebook facility is now up and running so please visit us to see what's going on.

If you are interested in more information please look at our website www.winslowart.org.uk or contact:

Chair: Maureen Barnes 01280 815691

Secretary: John Beckerleg 01280 816932

Treasurer: Jackie Chambers 01296 713607

Gardening Times

November does not seem as though it is a great time of the year for gardening. Everything has seemingly gone to sleep, the first frosts nipping everything in the bud, herbaceous plants will now be ready for cutting back. It all starts to look a little bare.

But November is prime garlic time and if planted now and with the soil holding onto the sun's heat from the summer, a little love and time and by summertime you will have a dense head of pungent garlic to keep the vampires away.

Garlic needs this cold snap over winter for the cloves to divide, you can just end up with one massive bulb, a bit like an onion, if they don't get at least 2 months of chill.

If you don't have enough space in your garden

they do just as well in large pots, just make sure that they don't get waterlogged over these next few months. Spreading a little ash from a wood stove (not coal!) will also give them a helping hand in the growing stakes.

Garlic, along with many other plants that we take for granted is thought to have been brought over by the Romans as their value, not just culinary but medicinally as well has been known for centuries.

It is known to be good for the heart and for lowering blood pressure, boosting our immune system, and lowering cholesterol over the long term.

However, it has another, vital use for gardeners that is often overlooked. If you don't have a vegetable patch but would like to grow some, it is fabulous as a companion plant to rose bushes. Roses are prone to get all sorts of pests and diseases, black fly, green fly, aphids, black spot and mildew, the list goes on and on. Planting a bulb of garlic next to a rose could mean that your prized rose bush has a little less in the way of predators chomping on them next year.

It is known to be a good companion for apples, pears, cucumbers, peas, lettuce, and celery as it accumulates sulphur which is a natural fungicide. It has even been known to keep deer away.

It puts off all sorts of nasties, not just vampires, the only downside being that if you are going to eat it then everyone in your family needs to join in!

Jobs to do this month

-Raise any pots that you have by putting bricks or feet under them, this helps to prevent waterlogging, they can easily rot if the winter gets too wet.

-Now is a good time to lift and divide any overgrown perennials that you have, they then have all winter to get settled in before Spring arrives.

-Rake and aerate your lawn, raking is both a great workout (get rid of those bingo wings) and gives your grass space to breathe and to grow. Aerating helps the soil. You don't need any fancy equipment; a rake and a garden fork will do nicely.

-Re-use any spent compost from pots, put them on your beds, you can't really ever have enough organic matter on your beds.

Winslow Community Bus

www.winslowbus.com
 wdcbenquiries@btconnect.com
 Tel: 01296 715786



We are now running the following services:

Aylesbury Market Bus (See left)- runs every Friday and Saturday morning -- from Winslow, through Gt Horwood, Nash, Whaddon, Mursley and Swanbourne, arriving in Aylesbury just after 10am and departing at 12.15pm. Bus passes accepted, otherwise £4.50 return.

Winslow Market Service 54abc - runs every Wednesday morning

This service picks up in the surrounding villages and then into Winslow, (Swanbourne, Mursley, Great Horwood, Whaddon, Nash and The Claydons). Pick up times vary according to village. Bus passes accepted, otherwise £3.00 return.

Buckingham Bus Service - runs on the first Tuesday of the month

Picking up in Winslow and surrounding villages. 1 hour in town then 1 hour in Tesco, or 2 hours in Tesco. Door to door service. Bus passes accepted, otherwise £4.50 return.

Asda - we offer this trip on the last Monday of the month.

Picking up in Winslow and surrounding villages. Asda Shopping with the option to drop at Stadium MK1 for M&S, Primark, Next and more. Bus passes are not accepted on this trip. £4.50 return.

Despite the government lifting restrictions, we still have the following guidelines in place to help keep yourselves and our drivers safe:

- Please call and reserve your seat in advance. All 16 seats are back on board but the double seats are still for single occupancy only unless agreed in advance with the coordinator.
- We ask that all passengers wear a face covering while travelling on the bus.
- We also ask that all passengers use the hand sanitiser provided on the bus.

Please contact the WDCB Coordinator for more details.

Passengers are not to travel on the bus if they or any member of their household are displaying any signs of the COVID-19 virus.

Revised timetables for the period of road closures caused by Network Rail EWR works. The temporarily revised services will operate until 20 December 2021 or until the road closures are lifted.

Additionally, on Fridays only, the 67 service will, for the duration of the road closures, divert through the villages of Nash & Whaddon. This will allow us to assess the need for regular services in future.

Tel: 01296 715786



GREAT HORWOOD PARISH COUNCIL

Useful contact details

Members of the Parish Council :

Please note that councillors now have a dedicated Parish Council email address. This is in order to comply with new Data Protection Regulations that came into force in 2018. It is good policy to keep council emails separate from private emails.

John Gilbey	Chairman	01296 711915	johnwgilbeypc@gmail.com
Caroline Cousin	Vice Chairman	01296 713548	carolinecousinghpc@gmail.com
Robert Davies	07967 868881	01296 712763	robert7_daviesghpc@yahoo.com
Dave Taylor		07980 546484	daveghpc@btinternet.com
Angela Mayne		01296 715400	angelamayneghpc@outlook.com
Jackie Goss		01296 713135	jackiegossghpc@gmail.com
Gavin Laird		01296 712798	Gavinlaird78ghpc@gmail.com

Clerk to the Council

Mrs Sue Brazier 01296 714712 clerk@greathorwoodpc.org.uk

Parish Council Website www.e-voice.org.uk/ghpc/

Great Horwood Village Hall Bookings 01296 715968

Doctors Car Service 07704 140110

Winslow and District Community Bus 01296 715786

Aylesbury Vale Dial-a-Ride 01296 330088

Community Police Officers

PCSO Andy Piotrowski 101 WinslowandDistrictNHPT@thamesvalley.pnn.police.uk

THE PLUMBER


Apprenticeship Served 1972 - 78
City and Guild Qualified
ON CALL EVERYDAY

Domestic and Commercial Installations,
Maintenance and Repair Service.

- 💧 Burst/Leaking Pipes
- 💧 Blocked Sinks/Toilets
- 💧 Hot Water Tanks
- 💧 Overflows
- 💧 Showers
- 💧 Radiators and Pumps
- 💧 Garden Taps/Water Butts
- 💧 Fault Finding
- 💧 FREE WRITTEN QUOTE

Call The Plumber Anytime
07970 317843
theplumber@email.com

1st aid for your plumbing



Claydon Auctioneers

Auctioneers of:

Antiques, Collectables, Silver,
Jewellery, Watches, Paintings & Prints,
Furniture, Clocks, Militaria,
Sporting Goods & Memorabilia,
General Goods & Chattels, etc.

Free auction valuations available,
Partial & total house clearance service,
Insurance, probate & family
division valuations

Auctioneer: Louise Gastelow

Contact: 01296 714434
info@claydonauctioneers.com
www.claydonauctioneers.com

Claydon Auctioneers Ltd.
The Claydon Saleroom,
Calvert Road, Middle Claydon,
Buckinghamshire, MK18 2EZ



THE CUTTING CORNER



Est 1998

Traditional Barber Shops



WINSLOW

Opening times:
Tues, Weds & Fri 9am-6pm
Thurs 9am-7pm
Sat 8.30am-5pm

2a High Street
Winslow
Buckinghamshire
Tel: 01296 715240

BLETCHLEY

Look online for opening hours.
140 Buckingham Rd
Bletchley, Milton Keynes
Tel: 01908 375987

Appointments available
Thursdays, Fridays and Saturdays at
74 High Street, Winslow.
Book online via our
website



www.cutting-corner.co.uk

FREE PARKING! Find us on Facebook





RK Plumbing and Heating

- Bathroom Installation
- Central Heating Systems
- All Plumbing Work Undertaken
- Landlord Gas Safety Certificate
- Breakdown and Repairs

FOR A JOB WELL DONE

To get a free quote
Call Rick on 07720 265645
 or
 email: rick@rkplumbing.net
www.rkplumbing.net



HomeGym Equipment available for hire



- Treadmills
- Cross Trainers
- Bikes
- Rowing Machines
- and much more



Refer a friend
 for a weeks
FREE HIRE

Call 0800 043 2148
enquiries@homegymuk.com
www.homegymuk.com

ExemplaCare

Exceptional carers & nurses at home

We offer the very best personalised care and support in the comfort of your own home.

We serve Buckingham, Winslow, Brackley & the surrounding villages.

- Personal Care
- Nursing Care

- Home Help
- Complex Care

☎ 01280 821860

✉ contact@exemplacare.co.uk

🌐 www.exemplacare.co.uk

Serving our local community & employing local staff.

Chartered Accountants and Business Advisers

For all your accountancy needs

Bookkeeping services	Accounts preparation
Corporation Tax	VAT Returns & services
PAYE Returns & services	Company formation
Company secretarial work	Tax planning advice
Self-Assessment	Tax Return preparation

**The Barn, 11a Queen Catherine Road,
Steeple Claydon, Bucks MK18 2PZ**

Contact us for a free consultation

Tel: 01296 738668 01296 826177

Mob: 07812 026346

Email: office@ajrandco.co.uk



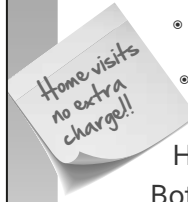
Chartered
Accountant
& Business
Adviser

**AJR
&Co**



Buckingham Wills & Probate

Part of Bicester Wills Ltd



- Standard Single Will - **£199**
- Standard Mirror Wills - **£299**
- Lasting Power of Attorney
Property & Financial or
Health & Welfare - **£325 each**
Both types for one person - **£500**
Both types for a couple - **£950**
- Probate Assistance from - **£1,200**
- Prepaid Funerals Plans - from **£1,700**

Gail and Lesley offer a friendly
estate planning service



Come in and see us
The Garage, Castle Street,
Buckingham, MK18 1BS
or phone 01280 811201



lesley@buckinghamwillsandprobate.co.uk

01280 811201

www.buckinghamwillsandprobate.co.uk

What's my house worth in Great Horwood?

If you want to know, get in touch with Ella Homes and Alexander & Co for your free, no obligation valuation.

We're working in partnership to cover more of your local area.

Aylesbury: 01296 710200
Buckingham: 01280 817400

Bicester: 01869 324711
Winslow: 01296 715386

ella

in partnership with

www.ella.co.uk

**A
&C**

ALEXANDER & CO

www.alexanderandco.co.uk

Window Cleaning

AND GUTTER CLEARING

WINDOWS CLEANED REGULARLY,
ONCE EVERY 2 MONTHS,
INCLUDING ALL FRAMES AND DOORS
FOR NO EXTRA COST.

CONTACT CARL ON

07979 395 101

or

countryhousecleaning100@gmail.com

FOR A FREE QUOTE.

also PRESSURE WASHING
OF PATIOS AND DRIVEWAYS

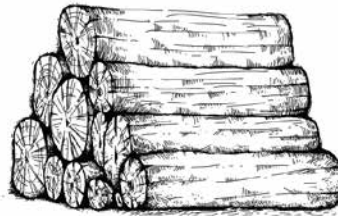
Jason's Logs

Good quality logs delivered
in full and half loads.

Garden clearance,
Tree management
Pruning services

Based at Edgecott

Tel 07961 538035



OPENING HOURS

Please check our website for up to
date opening hours



TWIGS NURSERIES

Windy Ridge, Thornborough, Buckingham,
MK18 2DZ
twignurseries@gmail.com

INDOOR PLANTS AND POTS



OUR ONLINE
SHOP
IS NOW OPEN

- FAIR TRADE GIFTS & ORNAMENTS
- PERENNIALS
- SUCCULENTS
- SHRUBS & TREES
- POTS
- COMPOST
- BEDDING PLANTS
- METAL WORK
- TOOLS
- ROSES

www.twignurseries.com

order online now with free local delivery

D. Johnston

Heating & Plumbing Solutions

Boiler installations / servicing / repairs

Oftec registered oil boiler specialist

Gas safe registered

Landlord Safety Certificate

Full Central heating Installations

Under Floor Heating

General Plumbing

Power flushing

Pressurised hot water systems

Bathroom installations



www.d.johnstonhps.co.uk

Email: djohnstonhps@outlook.com

Tel: 01296 655169 / Mob: 07702 036217

Precise PVC-u Building Supplies Ltd

Suppliers of Building Plastics

Precise PVC-u Building Supplies Ltd is a family run company based in Bletchley, Milton Keynes. We are established since 2003 and pride ourselves on our friendly and informed customer service.

Our experience in the trade ensures that we supply the best quality PVC products to all our customers. We guarantee next day delivery on all of our stocked items. We are a supplier of a wide range of plastic building products. Many of our customers use our services like a manufacturers and suppliers as we can order any product that is currently not in stock.

We are suppliers for window fitters, builders, plumbers and DIY enthusiasts. Whether you're an individual who likes home improvements or a professional window fitter we are able to supply you with all the necessary materials. Come down to the industrial estate and see how we can save you and your company money on all your PVC supplies.

Some of our specialist PVC-u products include:

- Fascias, soffits and guttering fixtures and fittings
- Window sills
- Skirting boards
- Draining pipes
- Door panels and accessories including cat flaps and letter boxes
- Lead Roofing
- Polycarbonate for lean two's and conservatories
- Underground drainage
- Trims, pins, nails, tools bagged sand and cement
- Silicone, solvents and adhesives

FREE
next day delivery
to the local area
on stocked items
on orders over
£50



MK ONE Business Centre

Unit B, 12a Romar Court, Bletchley, MILTON KEYNES MK1 1RH

t: 01908 270 994 e: sales@preciseupvc.co.uk

Editor: David Brazier editor@ghfocus.com
Typing & Layout: David Brazier, Andy Gibbs.
Printing: Harlequin Press Ltd.
Copy deadline: 15th of month before publication.

Distribution: June Margerrison, Ann Biggins, Edwina Daymond, Louise Edwards, John Gilbey, Valerie Hancock, Duncan Hogston, Cathy Holland, Ian Lamberton, Gary Lee, Angela Mayne, Gill Wood, Kathy Thompson, Sylvia Whitehall.

Available online at: www.e-voice.org.uk/ghpc

GHS PTFA

Great Horwood
Church of England School PTFA

Christmas Fete

Friday 3rd December 2021.
2.30pm - 4.30pm
Great Horwood School

Everyone Welcome. Free entry.
External stalls. Handmade gifts. Christmas crafts. Games.
Tombola. Face painting. Bake sale. Refreshments... and more.

Parentkind
Member Association