

FOCUS



The Nation's Commemoration of the End of WW1 2 Day Programme of Events in Great Horwood, Village Hall

**Saturday 10th November
10am -2pm**

**Display of WW1 Memorabilia, Poppy Artwork,
Projected WW1 documentary
and children's Treasure Hunt.**

**Sunday 11th November
4pm**

**Entertainment from
Great Horwood Silver Band and Cantlos,
Afternoon Tea**

6.30pm

**Parade to the Village Green with
Scouts, Cubs, Guides and Brownies
Followed by
Tribute to the Millions, read by Rod Moulding,
The Last Post played by Tony Hart.**

7pm

**Lighting of the Beacon
Finally
The Church Bells
Ringing Out For Peace**

**Please remember a maximum of 80 people can be served with
afternoon tea at any one time, so first come, first served, and wrap
up warmly for the event on The Green.**

Advertising and copy deadline for next issue of Focus : 15th November
To advertise or submit articles email: editor@ghfocus.com

THE CROWN

FESTIVE MENU

STARTER

SPICED PARSNIP SOUP

Served w/ bacon crumbs (GF and V on request)

TIGER PRAWNS

Served w/ cognac dressing w/ rocket leaves and lemon oil (GF)

CHICKEN PARFAIT

Served w/ toast and chutney (GF on request)

MUSHROOMS

Baked mushrooms topped w/ a leek and Stilton crumb

SALAD

Feta, mint and watermelon salad (GF)

MAIN

ROAST TURKEY

W/ all the trimmings, meat juice gravy and classic vegetables (GF on request)

SLOW ROAST PORK BELLY

Served w/ fresh apple compote and a light sage & onion gravy. Served on potato pureé (GF on request)

SALMON FILLET

Served on a pea & mint risotto finished with prawn butter (GF)

VEGETABLE & CRANBERRY NUT ROAST

Served w/ a herb dressing (GF)

DESSERT

CHRISTMAS PUDDING

Served w/ brandy

CHOCOLATE TART

Served w/ After Eight icecream

VANILLA CHEESECAKE

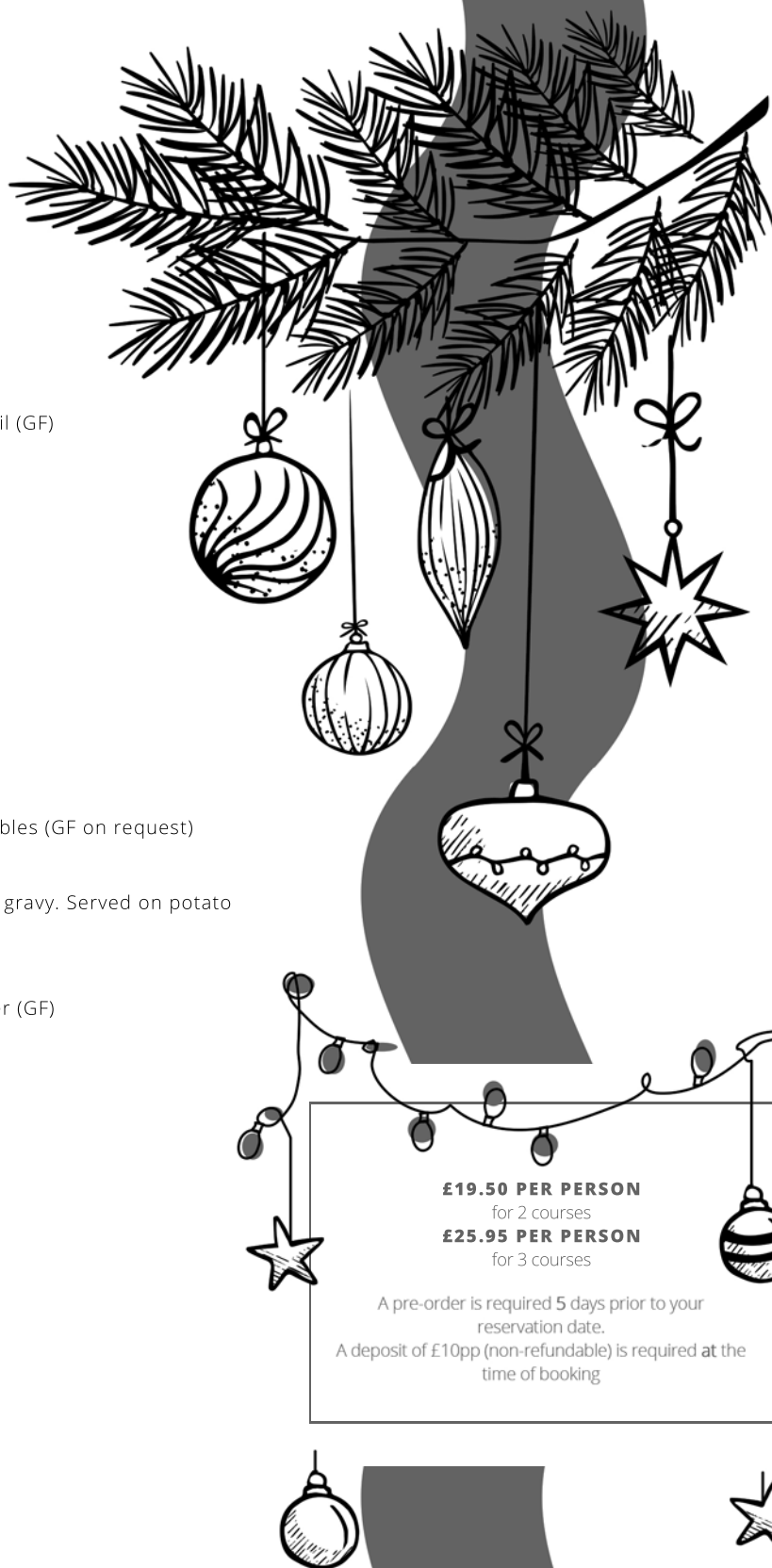
Served w/ caramelised clementines

WARM POACHED PEAR

Served in a mulled wine syrup

CHEESE SELECTION

Served w/ a selection of crackers (£2 supplement)



£19.50 PER PERSON

for 2 courses

£25.95 PER PERSON

for 3 courses

A pre-order is required 5 days prior to your reservation date.
A deposit of £10pp (non-refundable) is required at the time of booking

AVAILABLE FROM 1ST - 21ST DECEMBER

WWW.THECROWNGH.CO.UK

St James' Services for NOVEMBER 2018

			Sidesmen	Reader	Intercessor
4th Nov	11.00am	Holy Communion	J Margerrison	R Margerrison	J Margerrison
11th Nov	10.30am	Remembrance Sunday	P Moyles	-	Clergy
18th Nov	11.00am	Holy Communion	I Lamberton	J Brigden	I Lamberton
25th Nov	11.00am	Come and Share	N Weir	C Finnemore	Clergy

Remembrance Day

Please note that the Remembrance Sunday Service will start inside St James' Church at 10.30am so we can observe the two minutes silence at the War Memorial at 11.00am in the usual way. There will be no breakfast served before the service on this day.



ROAD CLOSURE - REMEMBRANCE SUNDAY

As in previous years, St James' has been given temporary road closure on Sunday 11th November 2018. This is for a wreath laying ceremony during the Remembrance Service at St James's Church, Great Horwood.

The road will be closed between 10.45 and 11.15am from the Swan/Pilch lane and the corner of Nash/Little Horwood Road.

Please could you try to avoid using your motor vehicles in this area at this time, as a mark of respect, as well as for the safety of the congregation of St James'.

Many thanks
C.Finnemore

Secretary St James' PCC



Church Key Rota: Zahra Hanson - tel 713406



**We look forward to welcoming all to
Great Horwood Scout & Guide
GANG SHOW
Friday 30th November 2018, 7pm
Village Hall**



**Please support your local
Scout and Guide Groups**

For further information please contact

Yvonne Taylor 07931 585926 / adcbandc@uwclub.net

Horwode Pece

We need You...

Autumn Working party the weekend of 17th/18th November.

We really appreciate ANY helpers who can make it along to the Rec from 10 am onwards on either or both days. We have lots of jobs, large and small, to be getting on with before Winter sets in. Please, Please, if you have any spare time over the weekend come down to the Rec and give us a hand, bring along practical maintenance equipment if you have any, ranging from a pair of secateurs, wheelbarrow, etc to a cordless screwdriver.

We are still experiencing issues of damage to equipment. We keep repairing and it keeps being damaged. We are having to look in to the option of CCTV as we cannot continue to accept and repair.

Cathy Holland, Horwode Pece Management Committee



Village Hall News

Great Horwood Village Hall

The last few weeks have been quite a busy time for the hall. Many thanks for using the hall, we still have some weekends available.



In November the Battle's Over weekend will be of interest to all of the village when we remember what our ancestors did, and gave up for us. So please come and see the exhibition in the hall.

To book the hall call Gill on 01296 712165



Winslow Hearing Care Ltd

How's Your Hearing?

Winslow Hearing Care Ltd are your local, independent hearing healthcare centre based in Horn Street Clinic and with home visits available we can provide advice/services including;

- Full Hearing Assessments
- Hearing Aids
- Ear Wax Removal
- Noise/Water Protection
- Hearing Aid Servicing/Repair
- General Hearing Related Advice

Tel: 0800 292 2002 (freephone)

Mobile: 07395 829 823

E mail: steve@winslowhearingcare.co.uk

Website: www.winslowhearingcare.co.uk

MICK WOOD

Heating Services Ltd

For service repair & installation
of

OIL FIRED BOILERS

OIL FIRED COOKERS

OIL TANKS

* Prompt personal attention

*New boiler installations

*Oil tanks supplied & fitted

*Oil tank gauges fitted



Registered
Technician

Tel: 01296 730 670

Mobile: 07979 645 472



THE CROWN, GREAT HORWOOD

THE ART OF SECRET DINING

DISCOVER A NEW LEVEL OF TASTE

Secret Dining?

A 4-course set menu masterfully created with the element of surprise in mind, using fresh locally sourced, seasonal ingredients that will set your tastebuds tingling.

A bespoke menu designed by your chef is secretly crafted and revealed on the night.

The last Thursday of each month, limited availability, booking essential.

4-course set menu promptly served at 8pm
£45pp

50% pp deposit will be required on booking

Please inform a member of staff on booking if you have any dietary requirements

tel: 01296 714 534

web: www.thecrowngh.co.uk

The Green, Great Horwood, Buckinghamshire, MK17 0RH



Trevor Evans
'Your Personal IT Man'

PC Support, Secure Wireless Broadband and Home
Networks,
Anti-Virus and Anti-Spyware Support

I can help you solve your IT problems and requirements

A Friendly and Professional Service

Call or Email me for a No-obligation Chat

☎ 01296-714413

✉ trevor@trevorevans.me.uk

HOLLAND ENGINEERING SERVICES



MOT TEST STATION
Motorcycle servicing & repairs
Quads & Lawnmowers
Parts and tyres
Mig/Tig Welding

Salden Crabtree Farm
Whaddon Road MURSLEY Milton Keynes MK17 0PR
Tel: 01296 728693
Mobile: 07879 427205

WINSLOW & DISTRICT ART SOCIETY



We launched into our new Society Year with our AGM at the end of September. Our new display stands are on order and will be providing a new 'Face' for the Society exhibition at the Public Hall in Winslow.

The exhibition will be open from 11am on Saturday 3rd of November and from 10am on Sunday 4th. It will close at 4-30pm both days. We expect to hang in excess of 100 original artworks and a variety of other items will be available for sale from members. There will also be demonstrations by members which will enable visitors to ask questions and see art in progress.

The Society has an active programme of speakers our speaker on November 22nd is Tom Shepherd, a professional acrylics artist specialising in tropical birds. This demonstration will start at 7-30pm and is free to members. Non-members are welcome for a modest charge of £3. which includes refreshments.

Membership of the Society is open to all those with an interest in the various art media - you don't need to be an expert to be a member

If you would like more information on anything concerning the Society, please feel free to get in touch with the Society officers listed below

Treasurer Jackie Chambers (01296) 713607

Secretary Maureen Barnes (01280) 815691

Chairman Peter Weatherill (01908) 675146



WINTER BEDDING PLANTS

MANY VARIETIES IN POTS AND SIXPACKS PANSIES, VIOLAS, WALLFLOWERS,
PRIMROSE, PRIMULA, CYCLAMEN & MORE
HANGING BASKETS AND PATIO POTS - ORDER YOUR OWN BESPOKE BASKETS NOW

GIFTS AND DECORATIONS

ETHICALLY SOURCED GOODS FOR A GUILT FREE CHRISTMAS

CHRISTMAS MARKET

16th DECEMBER

We are holding our second annual Christmas Market in association with Modern Vintage Gift Co!

25 HAND-PICKED STALLS UNIQUE AND EXCITING PRODUCTS

HOT FOOD ALONGSIDE DRINKS AND SNACKS FROM OUR OWN COFFEE SHOP

For updates and more info see the event on our Facebook page or www.twignurseries.com

CHRISTMAS TREES & HAND-MADE HOLLY WREATHS

ON SALE FROM END OF NOVEMBER

PREMIUM NORDMANN FIRS AND NORWAY SPRUCE
POTTED CHRISTMAS TREES



TWIGS NURSERIES Windy Ridge, Thornborough, Buckingham, MK18 2DZ
www.twignurseries.com - twignurseries@gmail.com - 01280 816 855



K.J. WINDOWS & DOORS

UPVC WINDOWS & DOORS
CONSERVATORIES
FASCIA & SOFFITS
BI-FOLDING DOORS

ALL REPAIRS, INCLUDING
MISTED & BROKEN UNITS

ALL WORK GUARANTEED

CALL KEITH 07539 367 200

DISCOVER OUR CLASSES



SPECIAL OFFERS
**FOR NEW
CUSTOMERS!**

Keri: 07900 987230

<https://jazzercise.net/uk-aylesbury/>

JAZZERCISE

Monday	7.30pm	Furze Down School
Wednesday	7.30pm	Furze Down School
Saturday	9.00am	Furze Down School



For all your signal reception and AV installation requirements

Contact your LOCAL expert, established 1988

We have moved but still cover this area



TV & Satellite

Aerial and Satellite System Sales, Installation and Repairs

- TV and Radio aerials
- Distribution systems
- Aerial installs and repairs
- TV wall installations
- Freesat and other satellite systems
- Commercial & Multi-dwelling systems
- Closed circuit television
- Automated home technology
- City & Guilds qualified

Tel: **01869 346806**

Mob: **07836 204315**

info@tvandsatellite.co.uk

www.tvandsatellite.co.uk



1 Town Well End, Fritwell, Bicester, OX27 7QD

Winslow Community Bus

www.winslowbus.com

wcbenquiries@btconnect.com Tel: 01296 715786



Everyone is eligible to come on the bus, we pick up near to your house, please ring Sue for more information.
*Denotes bus pass accepted.

EVERY Wednesday morning - Winslow Market Day bus* - Pickups Claydons, Horwoods, Swanbourne, Mursley, Nash, Whaddon £3.00 return, free with bus pass. Ring for details.

EVERY Friday & Saturday morning - Aylesbury Market Bus* - Pickups Winslow, Horwoods, Mursley Swanbourne Weedon (Sat only) £4.50 return, free with bus pass.

ALL are welcome to come on the Community Bus -we pick up near to your home and carry your shopping for you if you're good!

Tuesday 6th November - **Buckingham Bus** - 1 hour town, 1 hour Tesco or 2 hours Tesco! Door to door, bus pass accepted, otherwise only £4.50 return.

Thursday 8th November - **Westcroft Shopping*** Morrisons, Boots, Aldi etc free with bus pass. Departs Winslow 9.30am, village pick ups. Ring to book.

Thursday 15th November - **Lunch at The Bell Beachampton** - lovely food in a lovely pub £4.00 travel

Tuesday 20th November - **Waddesdon Manor Christmas Fair** - Soak up the sights, smells and sounds of Christmas with 86 hand-selected exhibitors all housed in charming wooden chalets with an exciting variety of high-quality, unique gifts, decorations, crafts and festive foods. Entrance FREE to NT members, £10.50 per adult, (only £7.50 if we have a group of 15+) £4.50 travel.

Thursday 22nd November - **Westcroft Shopping*** Morrisons, Boots, Aldi etc free with bus pass. Departs Winslow 9.30am, village pick ups. Ring to book.

Monday 26th November - **Asda** in Bletchley Shopping, M&S, Primark, Next etc £4.00

Thursday 29th November - **MK Shopping** - Yes, Christmas is soon here - 4+ hours shopping in Milton Keynes, get it over and done with! £4.50

Make shopping easy! Reduce your carbon footprint!

You can jump on the Community Bus in Winslow any Friday or Saturday morning around 9.15am to get to Aylesbury for just after 10 o'clock - dropping off by Sainsbury's or the bus station, then return 12.15pm depart from bus station (High St pick up too on a Friday) - FREE with a bus pass, otherwise only £4.50 return. We can pick up near to your home - just ring Sue to discuss.

Ring Sue for more details 01296 715786



"All creatures great and small" catered for.

Greenway

Dog walking and pet care

Great Horwood based and surrounding villages

DOG WALKING
DAYTIME TOILET BREAKS
HOLIDAY CARE
VAST EXPERIENCE WITH DOGS
AND OTHER ANIMALS
FULLY INSURED
REFERENCES AVAILABLE



Louise Cassidy
07889 658 215

The Winslow Community Bus needs more volunteer drivers.



If you are aged between 30 and 70 years of age, have a D1 on your licence, and have some spare time, please consider becoming a driver for your local community bus. You can do as much or as little as you like, from shorter local runs to some of our longer day trips. We visit all kinds of places, garden centres, stately homes, shopping centres, countryside drives as well as our regular bus services, and the people who use the bus are a very friendly crowd! We are currently in need of a regular driver for our Friday bus into Aylesbury - so you can get your shopping done too!

We offer certificated training to MIDAS standard, and pay out-of-pocket expenses. Please ring or email for more info: 01296 715786.

wcbenquiries@btconnect.com

FREE - FREE - FREE
WONDERFUL WELL ROTTED HORSE MUCK
IN GREAT HORWOOD. Please call/text Joanne to arrange collection. 07850 326487

Village Table Top Sale

A fun and enjoyable time was had by all at our Village Table Top Sale on Saturday 13th October.

We were delighted to raise £86.50 in aid of the St James Church Fund.

Thank you to the ladies who provided delicious cakes.

Caroline & Debi

GREAT HORWOOD PARISH COUNCIL

We regret to report that Mary Saunders has resigned from the Parish Council. We thank her for the huge number of hours she put into the post, the meetings she attended, the documents she poured over, her very effective chairmanship and much more.

We now have three Parish Councillor vacancies. However, the good news is that we hope to welcome two new councillors at the November PC meeting and a third person is considering the idea.



PLANNING

As you will know, planning applications for the local area are dealt with by Aylesbury Vale District Council. What you might not know, however, is that GHPC can only make comments about the application. We hope that AVDC will take note of our comments but it is not unknown for them to disagree/ignore/dismiss local recommendations. Additionally, objections to applications are much more likely to be taken into account if they are based on planning law, putting lay people at a distinct disadvantage. Anyone can object but it always helps if you happen to have a friend familiar with the arcane planning system. The system is so unfathomable that GHPC's request to build on Horwood Mill was refused early in the Neighbourhood Plan process, forcing the team to find an alternative site but now the Mill has 7 houses on it. In another village, a designated orchard was refused all buildings, temporary or permanent, and a caravan removed after intervention by Planning Enforcement. The following year, despite widespread objections, the orchard was transmogrified into a forest, a very large shed was allowed and the caravan returned. I asked someone in the know who polices the police (i.e. the planners) and they could not tell me. One can refer to the Secretary of State but this is an expensive route, and could be out of proportion to the hurt caused. Another village is taking a decision to the Local Government Ombudsman but were told at the outset that only the methodology will be investigated. Whatever the outcome, the decision could not be changed! I should say that it is not all bad but problems always stick in one's mind. If you have dealings with planners it might help if you were a member of the magic circle (like some people I could mention)!



OPPORTUNIST THEFT

At the time of writing an opportunist theft has been reported in Little Horwood. Someone turned their back for a moment to lock the front door and £1000 of possessions was stolen from an open car. Needless to say, insurance does not cover this type of theft. Christmas is approaching so please make sure you keep security at the forefront of your minds at all times and lock your car when unattended. Don't let these morons spoil your Christmas.



STARTING SCHOOL FOR THE FIRST TIME

If your child was born between 1 September 2014 and 31 August 2015, Buckinghamshire parents can apply for a school place from 5th November 2018. Visit www.buckscc.gov.uk to apply for a school place. You must apply even if your child is at the nursery attached to the school you would like them to go to. Helpful information about starting school for the first time will be available on the website from the end of October at www.buckscc.gov.uk/schooladmissions. If you cannot apply on line you can fill out a paper application form (sorry no details given)

APPLICATION DEADLINE 3PM 15TH JANUARY 2019

EMERGENCY DEFIBRILLATOR



The Parish has an emergency defibrillator on the front wall of the village hall. In case of need, 1. Send a friend or family member to the box with a mobile phone.

2. When you arrive at the defib box, dial 999 and give the operator the number on the box. This is prominently displayed. The operator will then give the caller the code to open the box.

3. Take the equipment back to the patient and use according to the voice instructions.

HORWOOD FEAST 2019



After much deliberation, taking all feedback into account and speaking to the owners of the fair, GHPC has decided to grant the fair two days in 2019. The dates we have set are to arrive on Saturday 3rd August to operate on Sunday 4th and Monday 5th August and to leave on Tuesday 6th August.

A two day booking means that dodgems cannot be guaranteed, however, the Fair is planning to have a Silver Band Concert and a hog roast on the Sunday to promote a family friendly atmosphere with proceeds going to a charity chosen by the Parish Council. We have asked for lorries to be returned to the depot when not in use, entrances and exits to the Church and the Pub to be left clear, to close by 10 pm on Sunday and to be respectful of neighbouring houses.

PARKING IN THE VILLAGE



Parking along the High Street is getting worse, particularly around the general area of the village hall. We have asked on several occasions for people to park with consideration for the primary user of the pavement - **pedestrians** and **mobility vehicles** but they are increasingly being used as car parks. It is an offence to drive over the pavement, however, the PC does not want to be heavy handed. If we get no response to our requests in Focus we would like your opinion on how to proceed. For example

- do we ignore selfish parking
- do we leave notices on cars and if so how many do we leave before requesting further action
- do we take further action i.e. inform the police

Do you have any other (legal) ideas? For example, it was suggested that a white line be painted down the path to protect pedestrian space.

I asked Aylesbury Vale for their views and their only comment was that no one has a right to park on the highway in front of their house. Interestingly the consultant we contracted for the Spring Lane Junction survey said that parking cars normally on the road is a method of speed control. I look forward to hearing from you.

FLU JABS



Just a reminder that free flu jabs are available at your local surgery on the NHS for people in the following categories:

- anyone aged 65 and over
- pregnant women
- children and adults with an underlying health condition (such as long-term heart or respiratory disease)
- children and adults with weakened immune systems

Whether or not to have the flu jab is entirely up to you but when deciding, don't forget that flu season is not just a winter thing as it can extend well into Spring.

PARISH PUMP



FLORENCE NIGHTINGALE HOSPICE TREE OF LIGHT COMMEMORATIONS

The Florence Nightingale Hospice Charity Tree of Light commemorations are open to anyone wishing to remember friends and family members who have died. The ceremonies are open to all, regardless of religion or spirituality, and it doesn't matter whether your loved ones were cared for by Florence Nightingale Hospice or died at home or in hospital.

There are a number of different ways to commemorate loved ones through the Hospice's Tree of Light events. Sponsor a light in memory of them and write a dedication which will appear in the Books of Honour which can be viewed at the Hospice in December and early January, and at the two Tree of Light events. Or come along to one or both Tree of Light services which will take place at the Head Office of Florence Nightingale Hospice Charity at Walton Lodge, Walton Street, Aylesbury, at 5pm on Sunday 2nd December and at St Peter and St Paul's Church, Buckingham at 4pm on Saturday 8th December.

To sponsor a light in memory of someone, please call the Fundraising Team on 01296 429 975 to request a Tree of Light Form or find out more at www.fnhospice.org.uk/tree-of-light



THE BATTLES OVER 10/11th November 2018

Don't forget the Great Horwood Battle's Over events on 10th and 11th November to commemorate the centenary of the end of the First World War. Look out for poppy decorations around the village in the coming weeks. We are still knitting poppies.

Please see the final programme elsewhere in this edition.

Mandy Cliffe, Parish Clerk Great Horwood

clerk@greathorwoodpc.org.uk 01296 715829

FROM THE CHILDREN OF GREAT HORWOOD SCHOOL



Grandparents Tea **BREAKING NEWS**

At Great Horwood there has been an EXTREME event, on Friday 5th October 2018! We held a 'Grandparents Tea'. At this event all the classes performed for their grandparents (and some parents too).

Year 5 and 6s song was in the format of an acrostic poem, to the tune of 'Do Re Mi'. After that Year 5 [my class] chose an acrostic poem to recite together. We chose our favourite and the winner was Tippi!

While we were waiting to perform, we continued to read our class book ['The Ghost of Thomas Kent' by Penelope Lively] which we love!

The Year 6s came to get us and we were so excited, but some were quite nervous too.

By Monica and Faye in Rowan class

W.I. News

Several trips are arranged for October and November which include Brackley Chocolate Factory and Burford Garden Centre and Burford town. We are hoping to see Private Peaceful by Michael Morpurgo at Aylesbury Theatre which will be a fitting armistice reflection in November.

We are looking forward to providing tea and cakes for our Kindness Day and the Battles Over Centenary. For our last meeting we had a quiz and our November meeting will be our AGM with cheese and wine.

Please contact Angela Mayne on 715400 or Monica Gilbey on 711915 if you would like to come to any of our meetings, you would be very welcome.

Sally Ahern



A message from Village Resident

Liz Chequers

As you must be aware there is a section of the B4033 on the left hand side of the road when approaching the village from Winslow which has recently subsided and is becoming worse each day. It is now causing cars to be unstable and it is only a question of time before there is a serious accident.

The reason for my email is to advise you that I have reported this formally to the council this morning using their website. There has been a previous report in Mid September but the only action that has been taken is for white lines which are barely visible to be painted around the fault. Hopefully if enough of us complain about this, they will repair it before someone is injured or killed.

World's Biggest Coffee

Morning

A big thank you to everyone who supported us on Friday 28th September. We raised just over £400.00 which is amazing. Special thanks to Charlotte, Liz, Julia, Sharon, Great Horwood Arts & Craft Group, The Crown Public House and for all your donations.

Georgina & Colin Pacitti



THE IRON LADY IRONING SERVICE 01908 504080

(Mobiles: 07733 120741 & 07713 215362)

Do you REALLY DISLIKE LAUNDRY & IRONING?

If so, we have a service to suit you.

A weeks washing? just a few shirts? or is it the entire package; washing, drying and ironing? You're not alone... At The Iron Lady we offer a service thats daily, weekly, fortnightly, monthly or even just when it gets too much!

Make your life simpler & call us. Fast, friendly and reliable.

Washing and/or Drying Service

Ironing Service

Pick up or delivered to your door

Drop off's
Welcome

Mon-Thurs 8am-1pm

e: tandldec@aol.com



Unit 2 • Bacon House Farm • Warren Road • Little Horwood • Milton Keynes • MK17 0PS



Doggy Day Care & Boarding Services since 2005

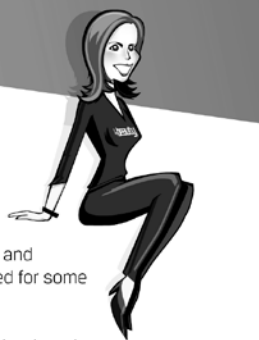
Edwina Daymond

Pet Nanny & Assured Breeder of Miniature Smooth Haired Dachshunds

2 High Street
Great Horwood
Bucks MK17 0QL

• 07881 558872
• www.horwoodhounds.co.uk
• horwoodhounds@btinternet.com

4Beauty is a multi award winning salon based in Whitchurch, Buckinghamshire. Our aim is to treat each and every client as an individual and to meet their expectations every time they visit our salon.



Our Therapists are trained to the highest of standards and professionalism along with technical expertise required for some of our ultimate and advanced facial procedures.

We offer premium brand products and provide quality treatments that undoubtedly make us one, if not the best beauty salon in Buckinghamshire. These include:

- Declor & Guinot Facials
- Declor Body Treatments
- CND Spa Manicures & Pedicures
- CND Shellac Manicures & Pedicures
- CND Minx Pedicures
- Bio Sculpture Natural Nail Enhancements
- OPI Gel Colour Manicures
- Brazilian Waxing with Lycon Wax
- PhD Waxing
- Lash Perfect Individual EyeLash Extensions
- LVL Lift Volume and Length Eyelash Treatment
- Special Occasion Makeup with New CID Cosmetics
- Wedding Packages
- Mother to be Packages

Monday	11:00am - 6:00pm
Tuesday	9:00am - 8:00pm
Wednesday	9:00am - 6:00pm
Thursday	9:00am - 8:00pm
Friday	9:00am - 6:00pm
Saturday	9:00am - 6:00pm
Sunday	CLOSED

4beauty

4Beauty LTD, 56 High Street,
Whitchurch, Buckinghamshire,
HP22 4JS
T. 01296 640644
www.4-beauty.com

THE PLUMBER

Apprenticeship Served 1972 - 78

City and Guild Qualified

ON CALL EVERYDAY

Domestic and Commercial Installations,
Maintenance and Repair Service.

- 💧 Burst/Leaking Pipes
- 💧 Blocked Sinks/Toilets
- 💧 Hot Water Tanks
- 💧 Overflows
- 💧 Showers
- 💧 Radiators and Pumps
- 💧 Garden Taps/Water Butts
- 💧 Fault Finding
- 💧 FREE WRITTEN QUOTE

Call The Plumber Anytime

07970 317843

theplumber@email.com

1st aid for your plumbing



What's my house worth in Great Horwood?

If you would like to know, please call either our sales or lettings team for a **free no obligation valuation.**

ella

www.ella.co.uk

Buckingham: **01280 817400**

Winslow: **01296 715 386**



Indonesian & Asian food specialist

Looking for something different, delicious, authentic, home cooked meal for Friday Meal Takeaway? For more info, pre-order, menu, and dietary requirements, please contact:

cindyskitchenuk@gmail.com

or 07988 592 511

Collection from Winslow Grange MK183FP

 www.facebook.com/cindyskitchenuk

Have a Computer?

**NEED
HELP?**

Help!!
I've got
a virus!

How
do I do
that?



I think
I need
some
training

Why
won't it
work?

Contact Marius

01296 712 561

marius.stuart@btoopenworld.com

for advice, support and training

Budapest Café are back at Stowe!

**Friday 16 November
7.30pm**



**Box Office: 01280 825710
Stowe Buckingham MK18 5EH**

**thearts@stowe.co.uk
www.artsatstowe.co.uk**

arts *Stowe*



established 1994

Granite and Quartz Kitchen Worktops

Template and installation
in under 3 days

Tel Nigel : 01296 689301

E-mail : info@marbleartsltd.co.uk

C.T.MOWERS

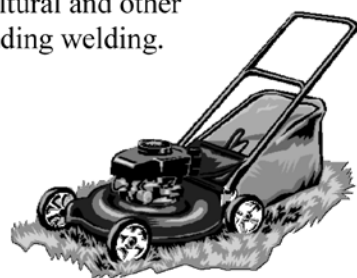
Lawn Mower and Garden Machinery Service & Repairs

All makes and models of garden
machinery undertaken.
(Please note, we do not carry out electrical repairs)

- Lawnmowers (including ride-ons)
- Strimmers, chainsaws,
- Garden Rotovators etc

Please enquire for agricultural and other
machinery repairs - including welding.

Contact Chris at
C.T.Mowers on:
07976 980388



www.ctmowers.co.uk

DICKINS
AUCTIONEERS LTD

ANTIQUE & FINE ART AUCTIONEERS

Monthly Auctions of Antiques &
Fine Art

Quarterly Picture Auctions
Sporting & Country Pursuits
Auctions

General Auctions

Partial & Total House Clearances
Insurance, Probate and Family
Division Valuations

The Claydon Saleroom, Calvert Rd.
Middle Claydon, Buckingham.
MK18 2EZ

Tel: 01296 714434 Fax: 01296 714492
info@dickinsauctioneers.com
www.dickinsauctioneers.com

THE CUTTING CORNER

Traditional Barber Shop



Opening times:
Tues, Weds & Fri 9am-6pm
Thurs 9am-7pm
Sat 8.30am-5pm
(Closed lunchtime 1pm-2pm)

74 High Street
Winslow
Buckinghamshire
Tel: 01296 714429

No Appointment Needed
Free Parking
www.cutting-corner.co.uk



Find us on Facebook

Now open until
7pm on
Thursdays



Quality Decorators

Over 15 years experience

- ∞ Interior and Exterior
- ∞ Hand Painted Kitchens
- ∞ Airless Spray System
- ∞ Free Quotations and Friendly Advice

Contact

01280 816699

07941 054 831

www.callinghams.com



Dulux
TRADE
Trade & Trusted

“Why leave the comfort of your own home to have a great haircut?”

I am one of Britain's top stylists with over **10 years' experience** as manager and Art Director for Toni and Guy.



Book me to come to your home at a time of your choosing



50% OFF INTRODUCTORY OFFER FOR ALL NEW CLIENTS

Tel: 07738 658234

www.superhairday.co.uk

sumin@superhairday.co.uk



Visit Superhairday on Facebook for 33 of 5star reviews from my clients and pictures!



Starting your own business?

Or need help with your existing business?

Do you need an accountant/tax adviser?

Clear, down to earth financial advice for all personal and corporate accountancy requirements.

Call for a free half hour consultation

T: 01296 738668

M: 07812 026346

www.ajrandco.co.uk



Chartered Accountant & Business Advisor

AJR & Co



Established 1990

Your Local Window and Conservatory Specialists

Products made to suit in UPVC

From Design thru' to completion ...

01296 712151

Email: NandGwindows@aol.com

FENSA Registered

D. Johnston

Heating & Plumbing Solutions

Boiler installations / servicing / repairs

Oftec registered oil boiler specialist

Gas safe registered

Landlord Safety Certificate

Full Central heating Installations

Under Floor Heating

General Plumbing

Power flushing

Pressurised hot water systems

Bathroom installations



www.d.johnstonhps.co.uk

Email: djohnstonhps@outlook.com

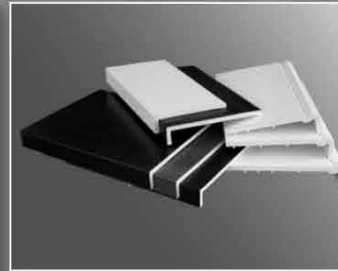
Tel: 01296 293179 / Mob: 07702 036217



Precise PVC-u Building Supplies Ltd



12a Romar Court, Bletchley, Milton Keynes, MK1 1RH
Sales - 01908 270994 sales@preciseupvc.co.uk
Accounts - 01908 824411 accounts@preciseupvc.co.uk
www.precisebuildingplastics.com



Building Plastics

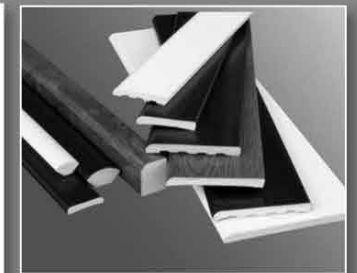
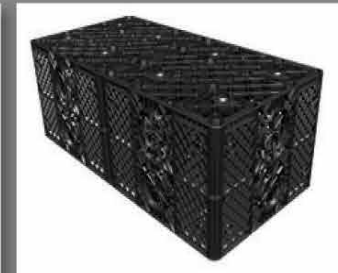
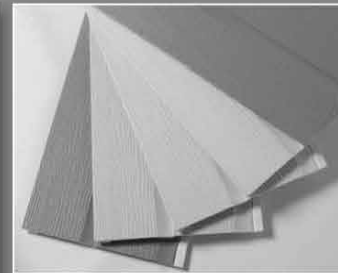
We supply the highest quality building plastics for window fitters, building contractors and the general public. We supply a wide range of building plastics to cater for all aspects of the building trade

Roofline Products

We supply a wide range of roofline products from all the leading manufacturers. We offer all our roofline products to tradesmen and individuals at highly competitive prices

Underground Drainage

We supply all the underground drainage products that you may require. We pride ourselves on providing the best quality underground soil and waste PVC-u products at low rates



Guaranteed next day delivery on stock items to our local area for orders over £50

**For SALES call
Tony or Pete**

**Trade Counter 01908 270 994
sales@preciseupvc.co.uk
www.precisebuildingplastics.com**



Editor: Helen Grimditch, David Brazier editor@ghfocus.com

Typing & Layout: David Brazier, Andy Gibbs.

Printing: Harlequin Press Ltd.

Copy deadline: 15th of month before publication.

Distribution: June Margerrison, Debbie Armitage, Ann Biggins, Edwina Daymond, Valerie Hancock, Duncan Hogston, Cathy Holland, Ian Lamberton, Gary Lee, Lyn Mayger, Angela Mayne, Gill Wood, Sandra Sanderson, Sylvia Whitehall.

Available online at: www.bucksvoice.net/greathorwoodpc/

**HORWODE PECE
FIREWORK
DISPLAY
SATURDAY 3RD
NOVEMBER**



**GATES OPEN 5.30
AT HORWODE PECE
DISPLAY 6.15pm
For Sale Hot food and Beverages
Including Mulled Wine
Entrance Fee
ADULT £5, CHILD £3
UNDER 5 FREE
Please No Sparklers**

